

目 次

1. 概況	1
2. 観測状況一覧	2
3. 地下水位・沈下量・降水量グラフ（4丁目）	3
地下水位・沈下量・降水量グラフ（6丁目）	4
地下水位・沈下量・降水量グラフ（7・12丁目）	5
地下水位・沈下量・降水量グラフ（8丁目）	6
地下水位・沈下量・降水量グラフ（10丁目）	7
地下水位・沈下量・降水量グラフ（11丁目）	8
地下水位・沈下量・降水量グラフ（12丁目）	9
地下水位・降水量グラフ（対象範囲外）	10
4. 地下水位・沈下量データ（4丁目）	11
地下水位・沈下量データ（6丁目）	15
地下水位・沈下量データ（7・12丁目）	17
地下水位・沈下量データ（8丁目）	21
地下水位・沈下量データ（10丁目）	23
地下水位・沈下量データ（11丁目）	25
地下水位・沈下量データ（12丁目）	27
地下水位データ（対象範囲外）	29

[概況]

[測定日]

2021/8/17～30

[概況]

水位につきましては、2021年8月の計測Dにおいて、11E_3、4を除き、それぞれの地点において液状化に対して所定の安全性が確保された状態まで水位が低下しております。11E_3、4においても設定水位に対して4cm程度の上昇であり、8月中旬の長雨の影響と考えられ、ポンプ稼働は継続していることから、所定水位以下まで低下するものと考えております。沈下に対しては第17回委員会において設定された一次管理値沈下量4cm以下の状態であり、問題はありません。

今後の計測につきましては、第21回委員会（2021年度内に実施予定）に諮り、決定いたします。

※地下水位の測定値はGL表示値とT.P.表示値があります（表示単位：m）。

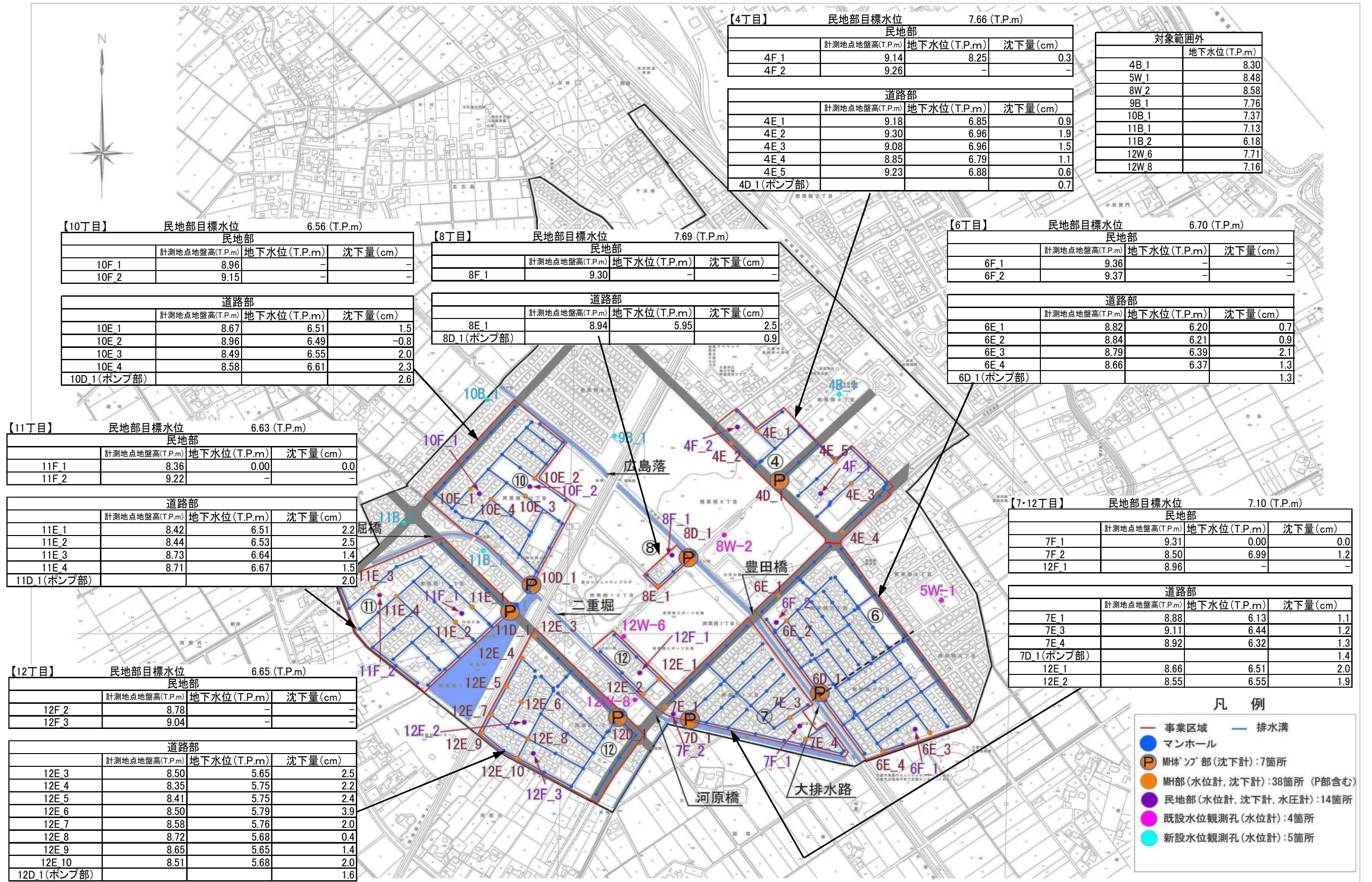
- GLとはGround Level（地盤面）の略です。GL-1.00mは、地盤面から1m下がった高さを表します。
- T.P.とはTokyo Peil（東京湾平均海水面）の略です。東京湾の平均海水面を0mとした時の高さを表し、測量法にて定めている高さの基準になります。

※降水量データは、気象庁（久喜）観測データを示す。

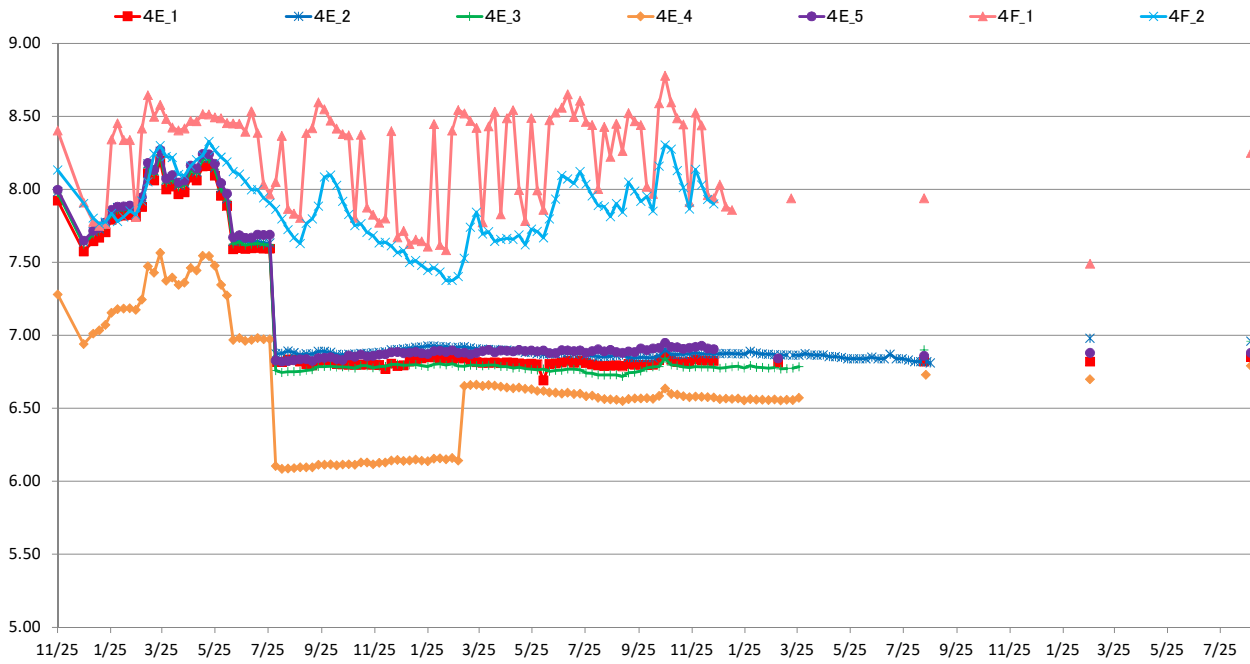
- 計測D（1回測定/6か月 沈下：地表面水準測量、水位：ロープ式水位計）

※日付に時間の記載がない箇所は手計による計測値となります。

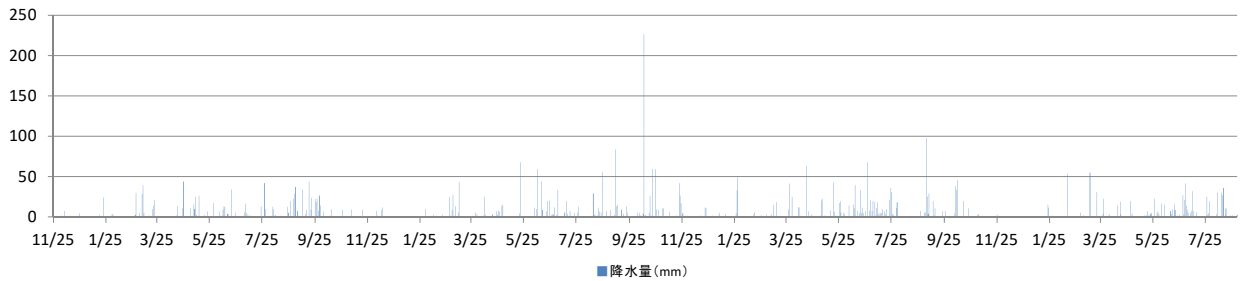
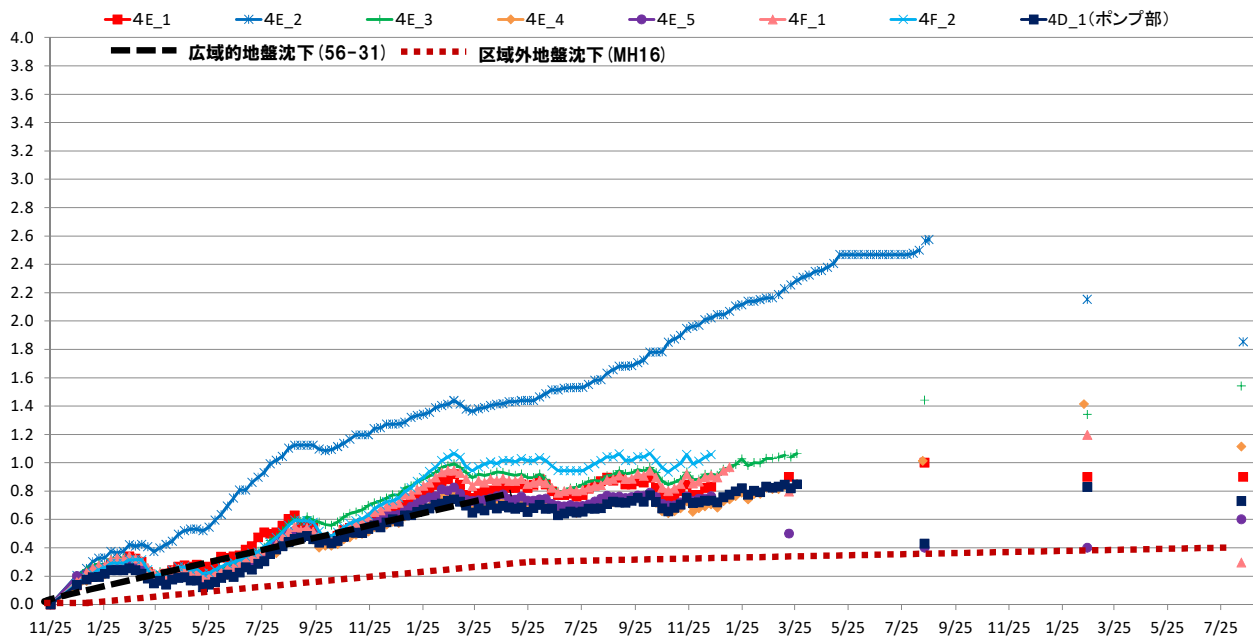
全観測終了地点：4F_2、6F_1、6F_2、7F_1、8F_1、10F_1、10F_2、11F_1、11F_2、12F_1、12F_2、12F_3



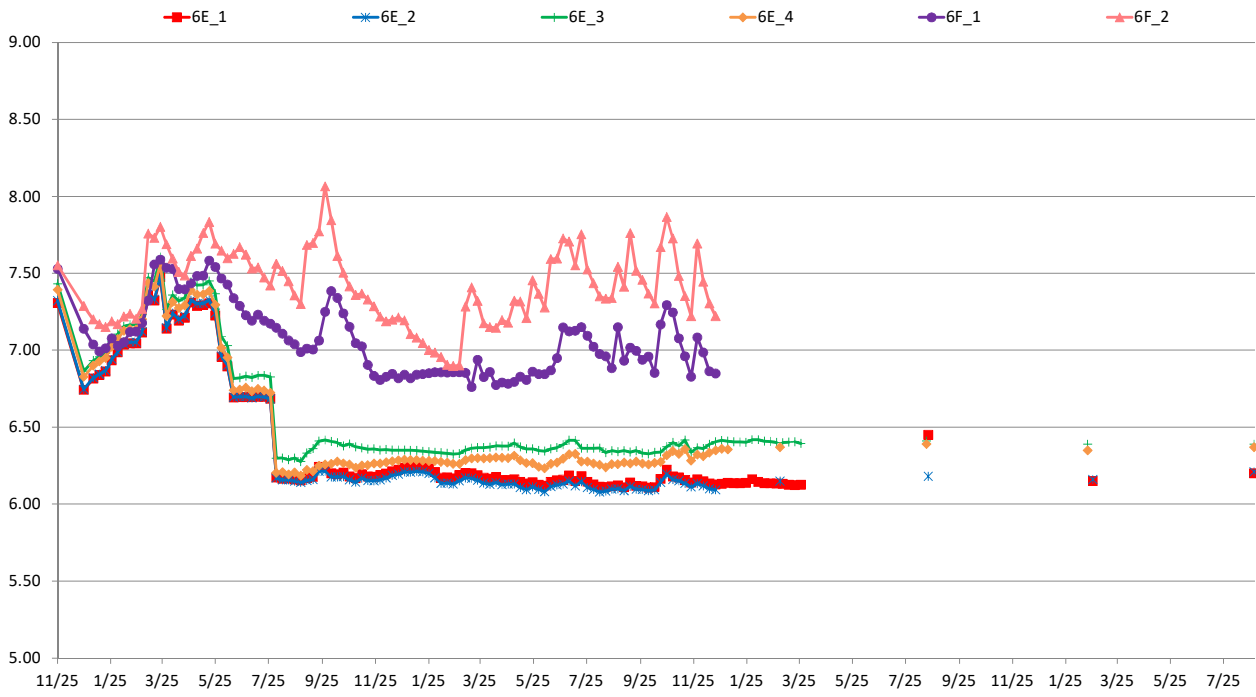
4丁目水位 (T.P+m)



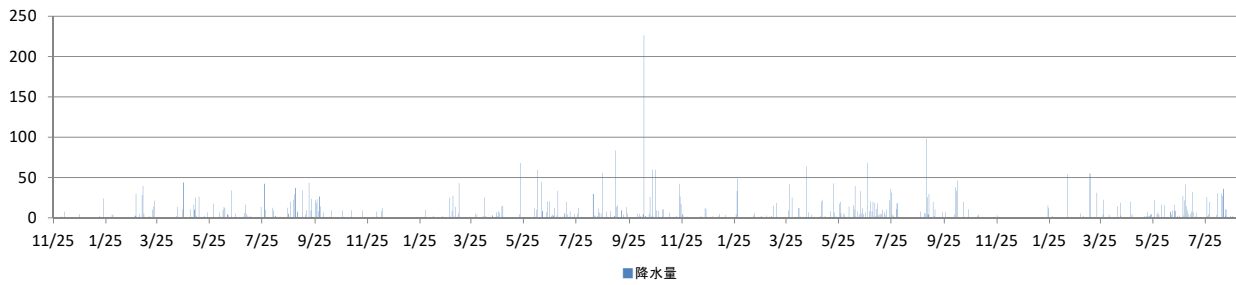
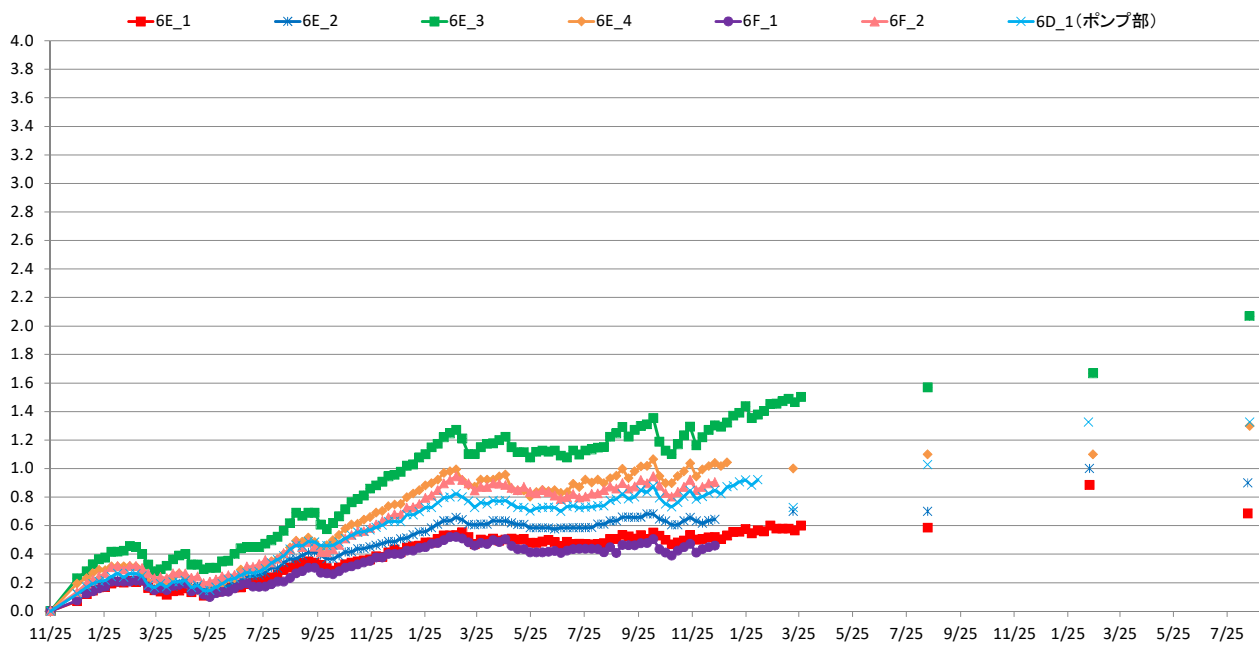
4丁目沈下 (G.L-cm)



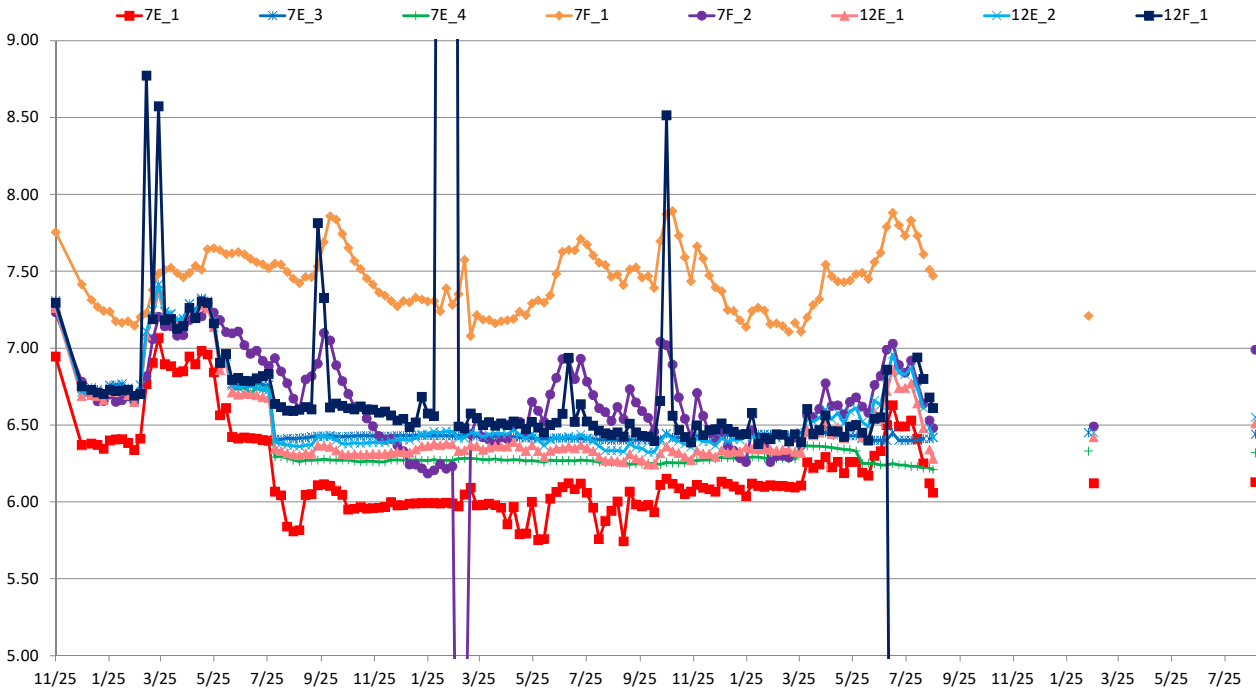
6丁目水位 (T.P+m)



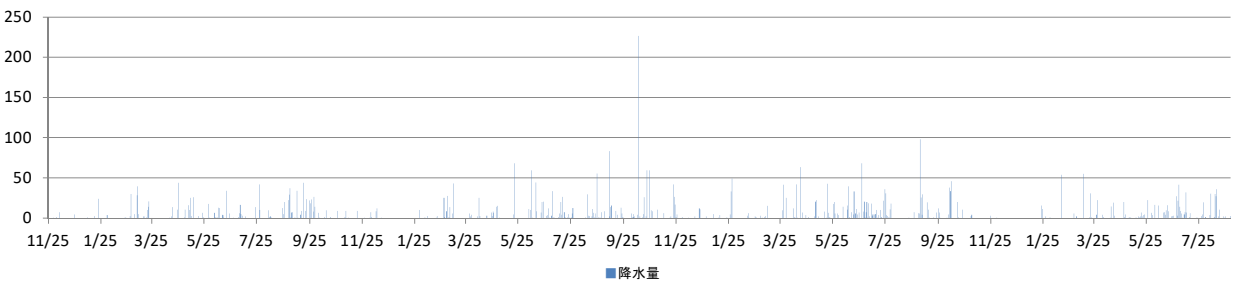
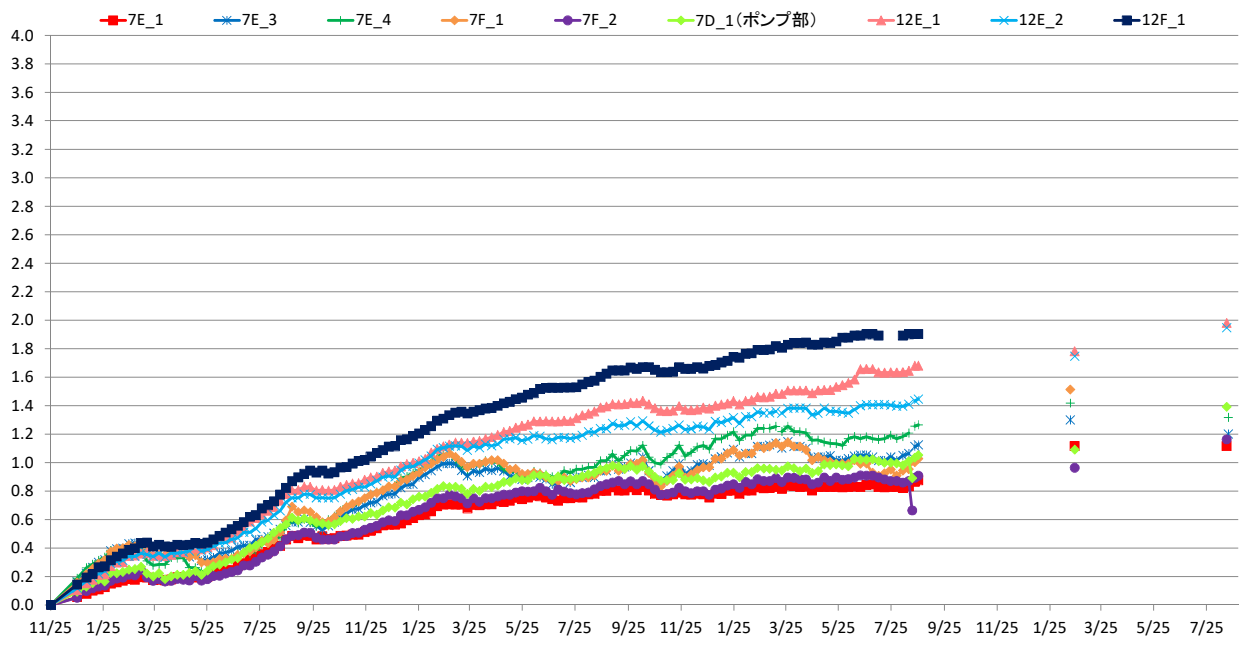
6丁目沈下 (G.L-cm)



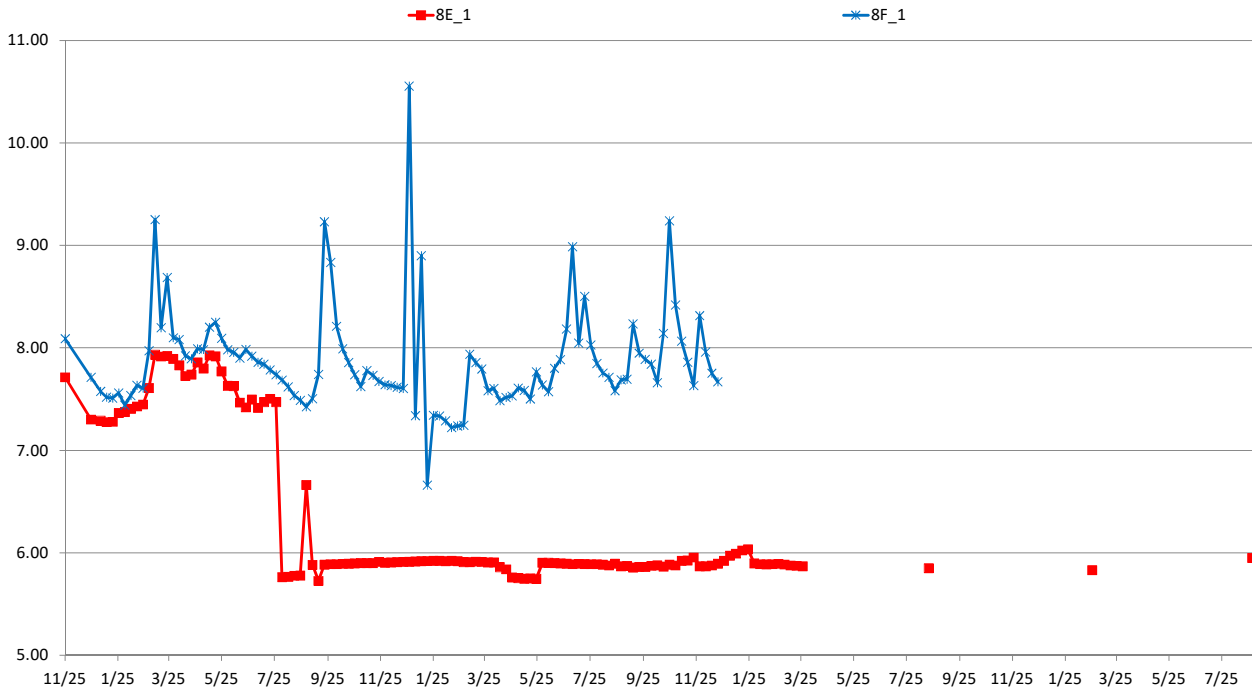
7・12丁目水位 (T.P+m)



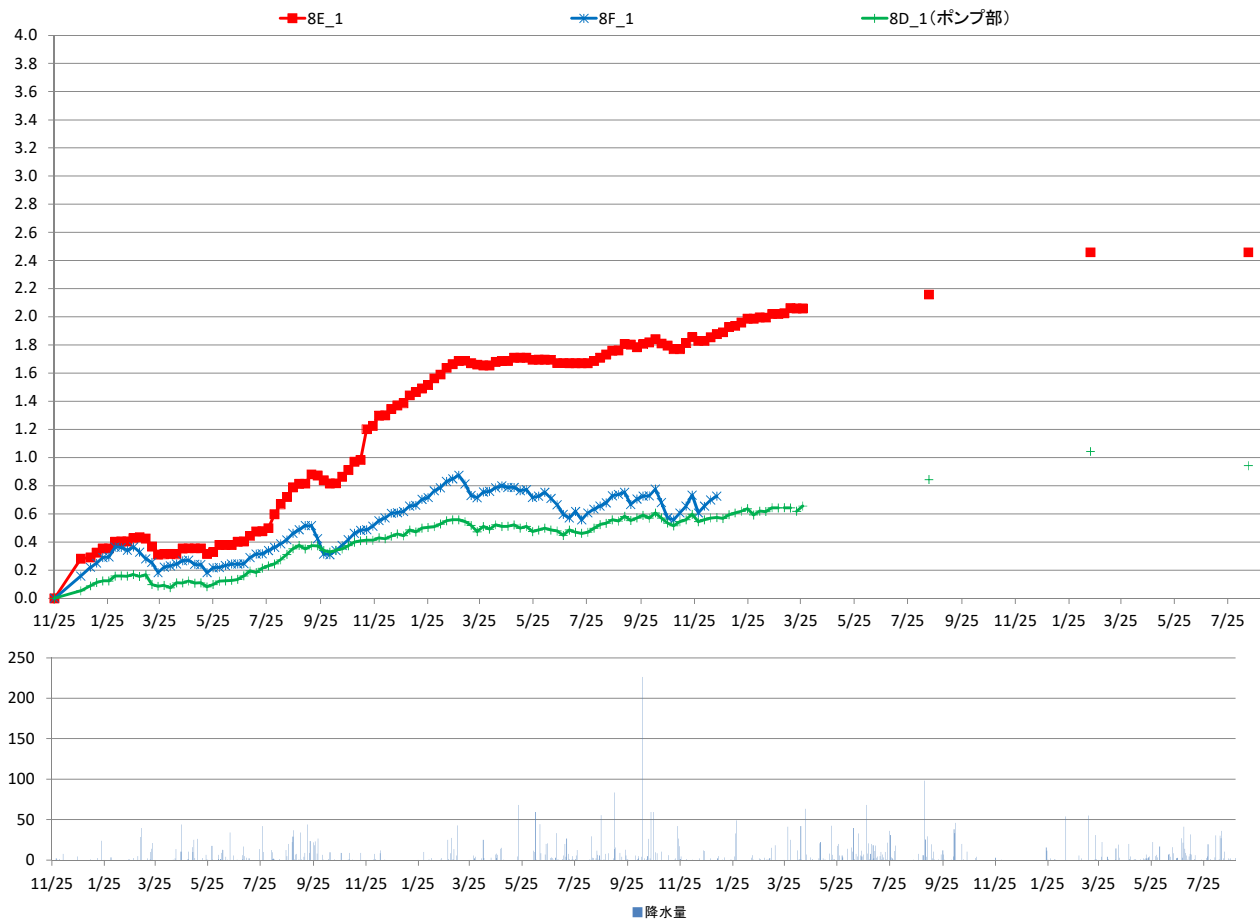
7・12丁目沈下 (G.L-cm)



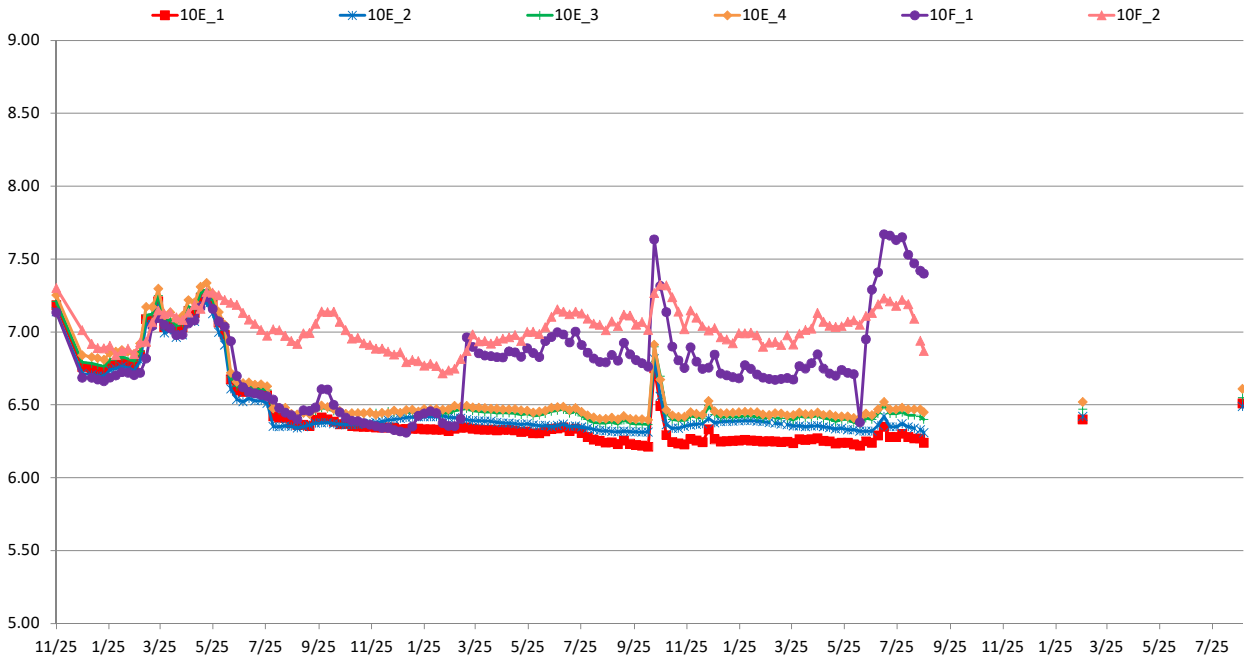
8丁目水位 (T.P+m)



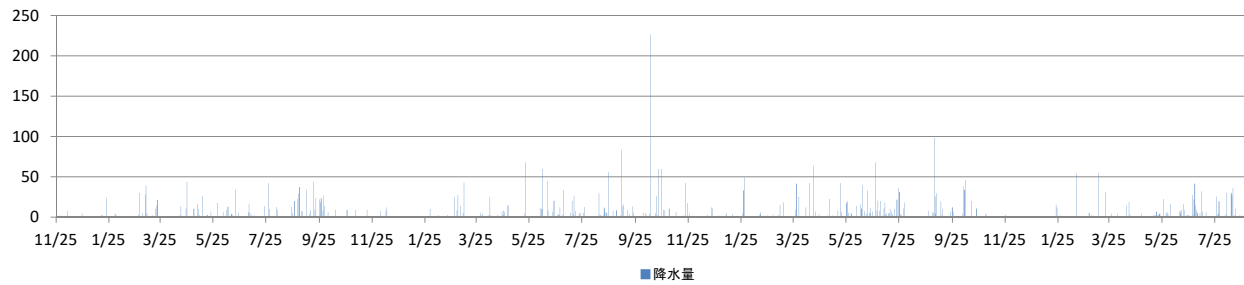
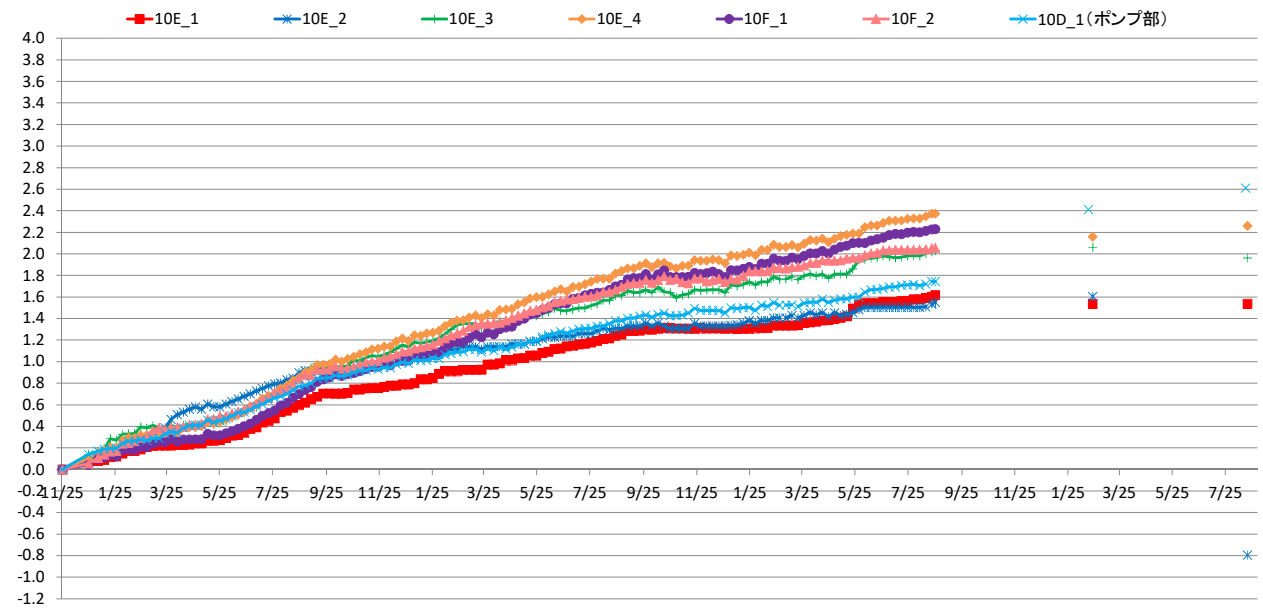
8丁目沈下 (G.L-cm)



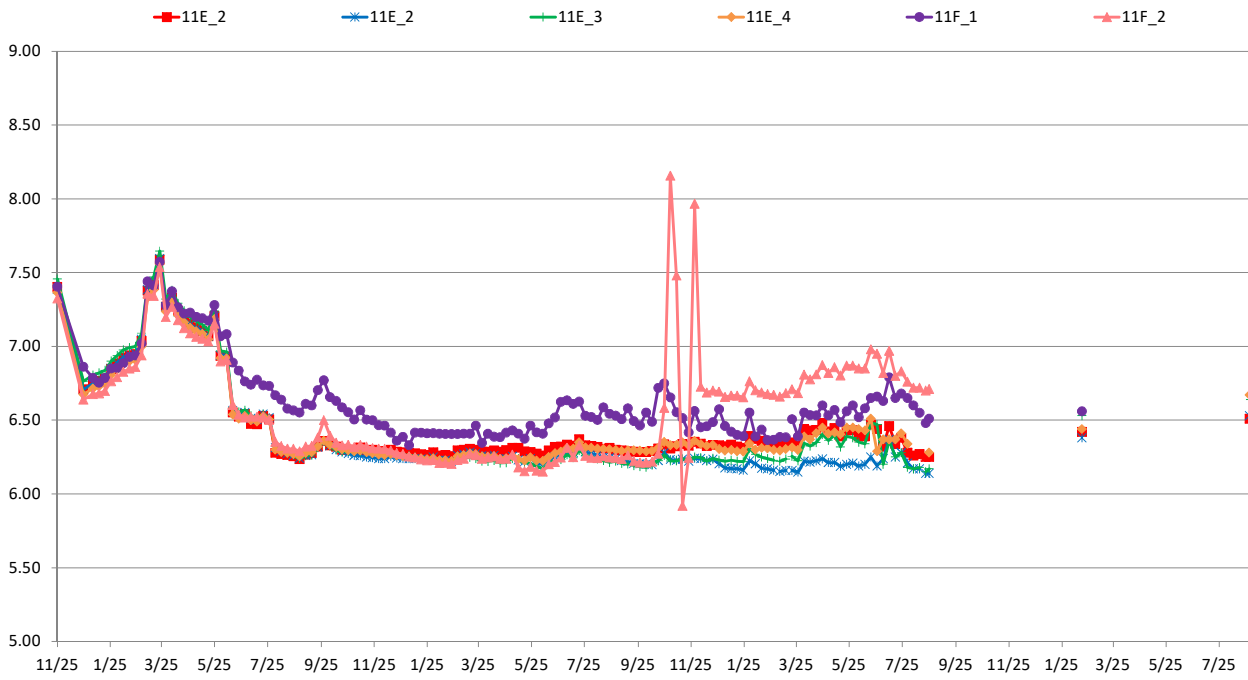
10丁目水位 (T.P+m)



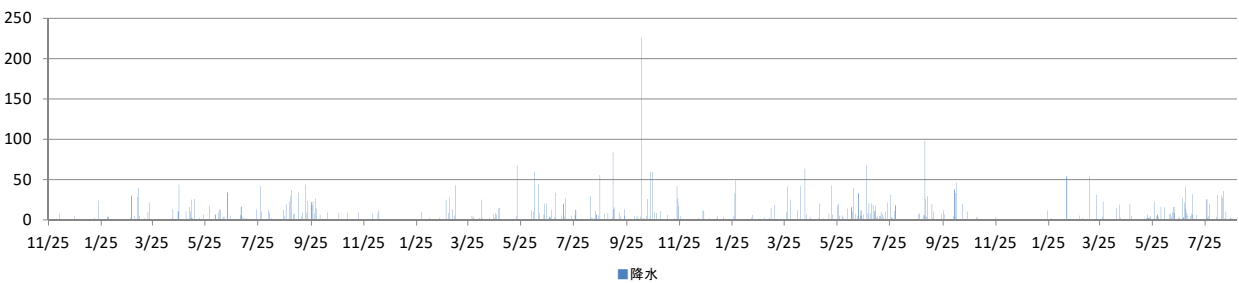
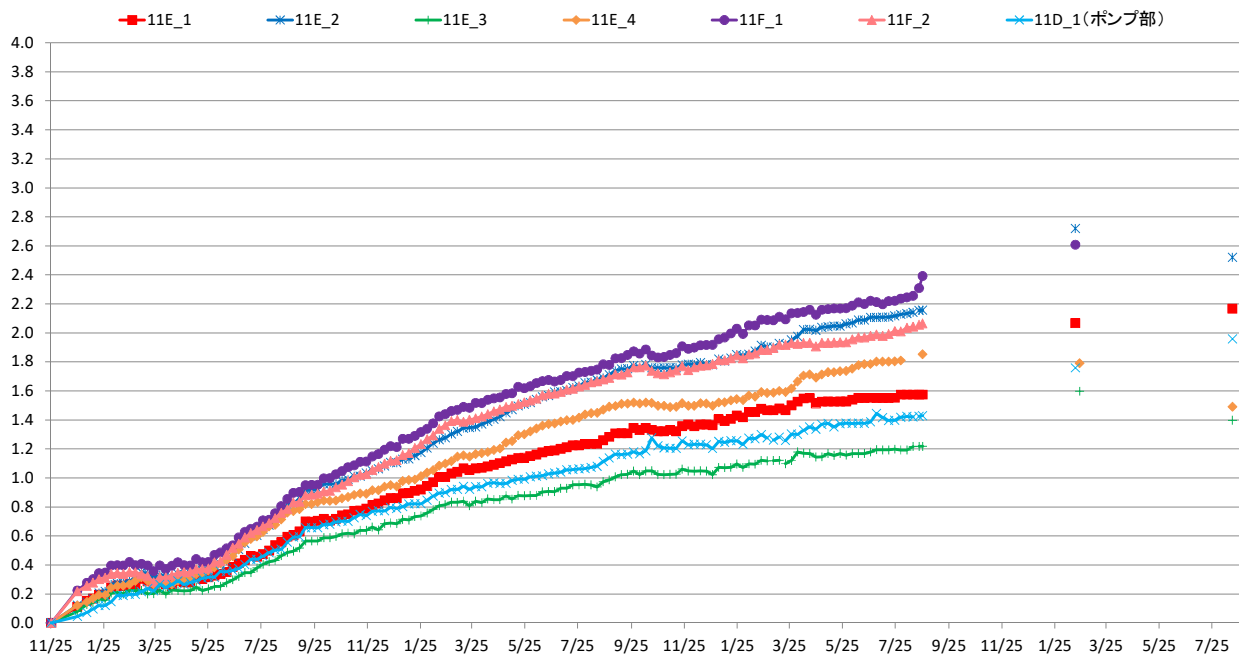
10丁目沈下 (G.L-cm)



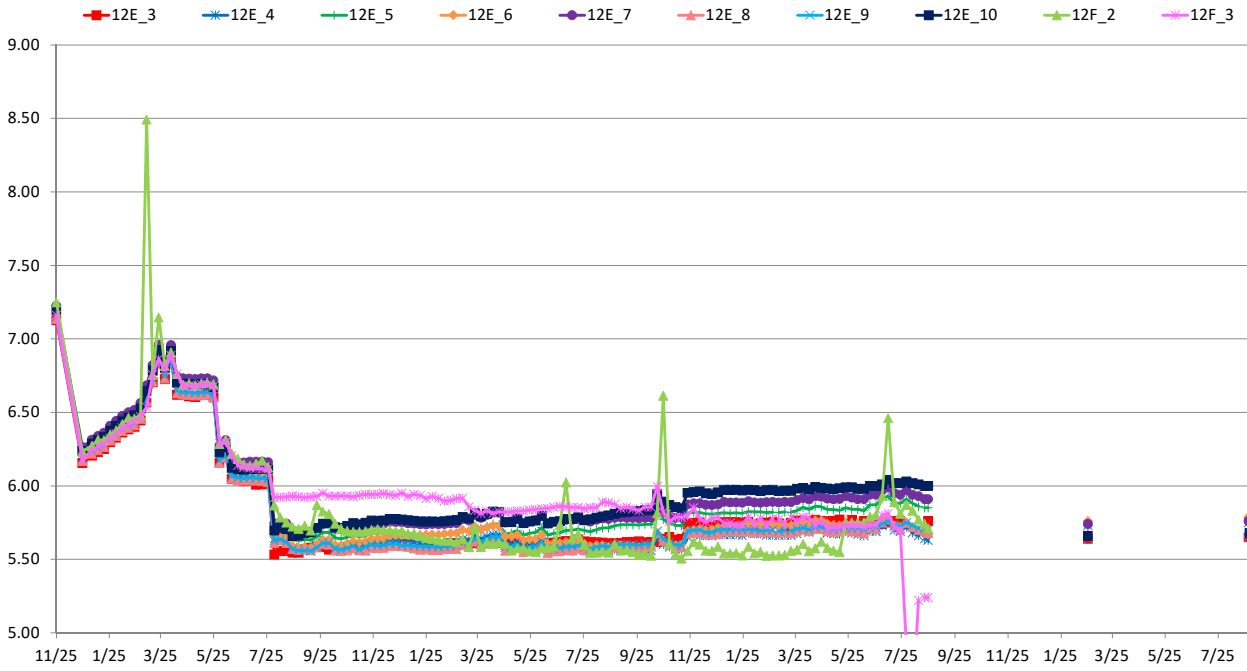
11丁目水位 (T.P+m)



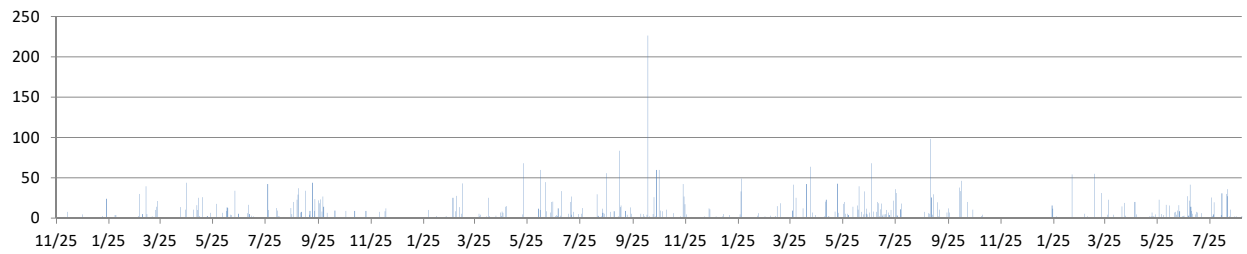
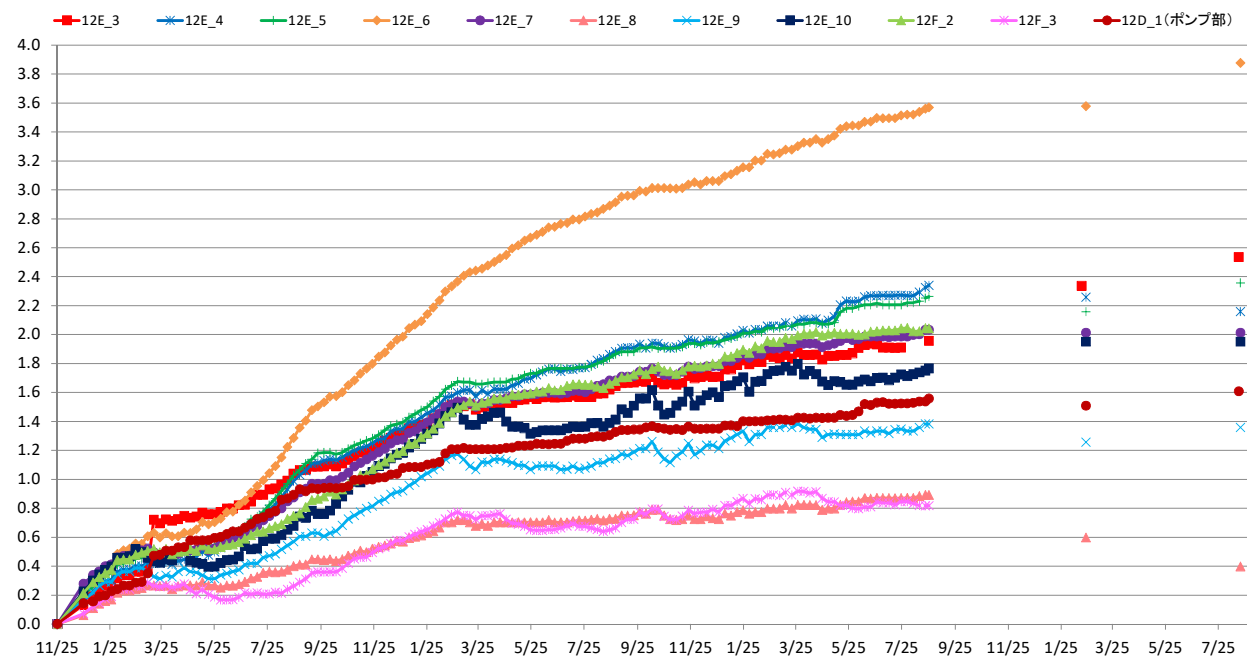
11丁目沈下 (G.L-cm)



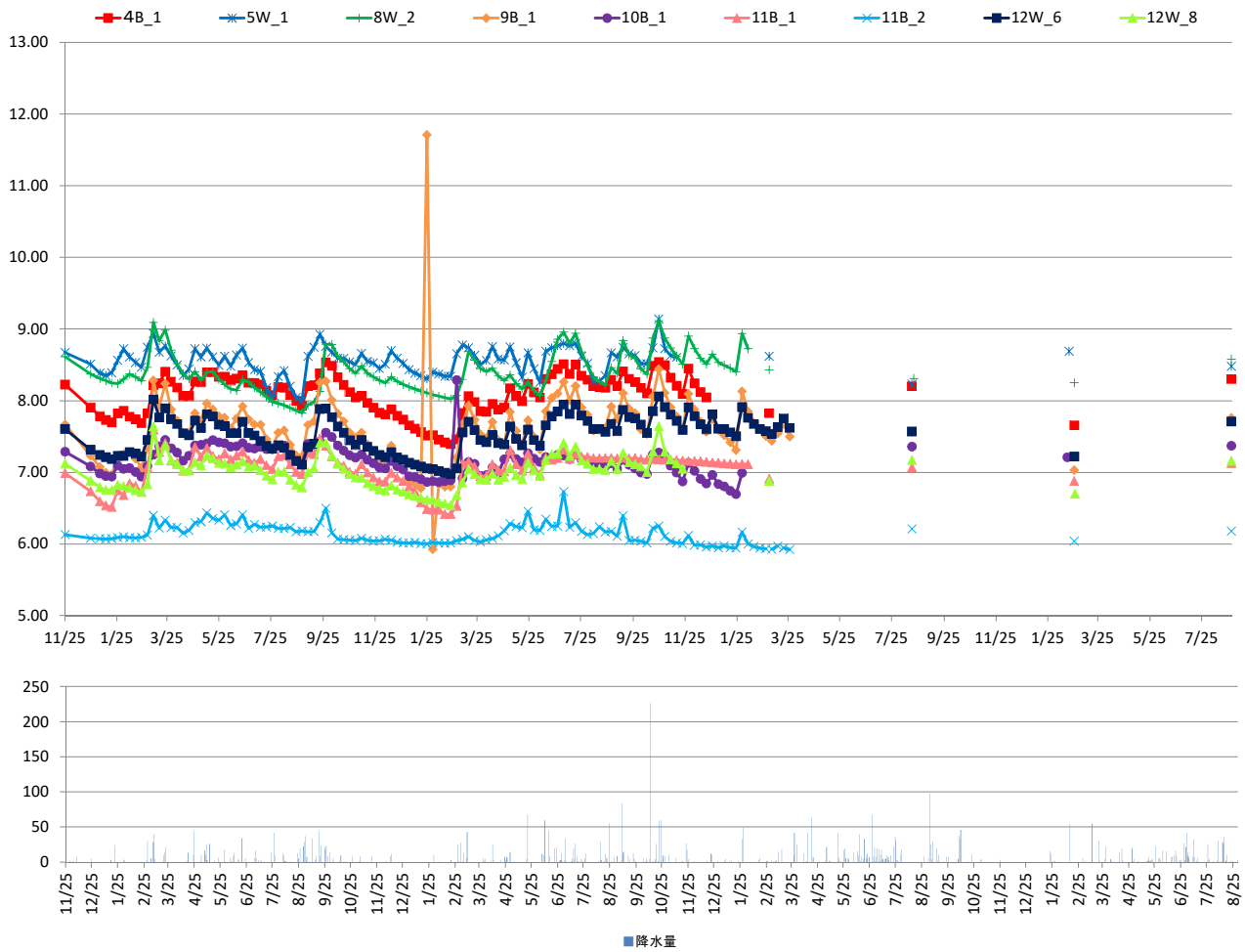
12丁目水位 (T.P+m)



12丁目沈下 (G.L-cm)



对策範囲外水位 (T.P+m)



[地下水位]		
事業区域名	4丁目(民地部)	
計測地点名	9.14	
計測地点標高(T.P.m)		
計測日	地下水位(T.P.m)	地下水位(Gl.m)
2017/11/25 12:00	8.40	-0.736
2017/12/25 12:00	7.91	-1.231
2018/1/9 12:00	7.78	-1.363
2018/1/12 12:00	7.75	-1.391
2018/1/19 12:00	7.76	-1.376
2018/1/26 12:00	8.34	-0.791
2018/2/2 12:00	8.45	-0.681
2018/2/9 12:00	8.34	-0.803
2018/2/16 12:00	8.34	-0.801
2018/2/23 12:00	7.61	-1.529
2018/3/2 12:00	8.42	-0.723
2018/3/9 12:00	8.65	-0.495
2018/3/16 12:00	8.50	-0.642
2018/3/23 12:00	8.56	-0.582
2018/3/30 12:00	8.48	-0.657
2018/4/6 12:00	8.42	-0.716
2018/4/13 12:00	8.40	-0.737
2018/4/20 12:00	8.42	-0.723
2018/4/27 12:00	8.47	-0.671
2018/5/4 12:00	8.47	-0.673
2018/5/11 12:00	8.52	-0.624
2018/5/18 12:00	8.51	-0.627
2018/5/25 12:00	8.49	-0.647
2018/6/1 12:00	8.49	-0.654
2018/6/8 12:00	8.45	-0.688
2018/6/15 12:00	8.45	-0.689
2018/6/22 12:00	8.45	-0.691
2018/6/29 12:00	8.40	-0.744
2018/7/6 12:00	8.53	-0.605
2018/7/13 12:00	8.39	-0.752
2018/7/20 12:00	8.03	-1.105
2018/7/27 12:00	7.97	-1.174
2018/8/3 12:00	8.05	-1.088
2018/8/10 12:00	8.37	-0.773
2018/8/17 12:00	7.67	-1.474
2018/8/24 12:00	7.83	-1.307
2018/8/31 12:00	7.80	-1.336
2018/9/7 12:00	8.38	-0.756
2018/9/14 12:00	8.42	-0.721
2018/9/21 12:00	8.60	-0.543
2018/9/28 12:00	8.55	-0.591
2018/10/5 12:00	8.47	-0.669
2018/10/12 12:00	8.42	-0.724
2018/10/19 12:00	8.38	-0.761
2018/10/26 12:00	8.37	-0.769
2018/11/2 12:00	7.60	-1.536
2018/11/9 12:00	8.37	-0.766
2018/11/16 12:00	7.88	-1.264
2018/11/23 12:00	7.63	-1.513
2018/11/30 12:00	7.77	-1.388
2018/12/7 12:00	7.80	-1.339
2018/12/14 12:00	8.40	-0.741
2018/12/21 12:00	7.67	-1.469
2018/12/28 12:00	7.72	-1.424
2019/1/4 12:00	7.63	-1.515
2019/1/11 12:00	7.60	-1.545
2019/1/18 12:00	7.64	-1.496
2019/1/25 12:00	7.61	-1.532
2019/2/1 12:00	8.45	-0.693
2019/2/8 12:00	7.62	-1.522
2019/2/15 12:00	7.58	-1.556
2019/2/22 12:00	8.40	-0.738
2019/3/1 12:00	8.55	-0.585
2019/3/8 12:00	8.52	-0.619
2019/3/15 12:00	8.47	-0.671
2019/3/22 12:00	8.42	-0.719
2019/3/29 12:00	7.77	-1.366
2019/4/5 12:00	8.43	-0.708
2019/4/12 12:00	8.53	-0.608
2019/4/19 12:00	7.63	-1.512
2019/4/26 12:00	8.49	-0.654
2019/5/3 12:00	8.54	-0.598
2019/5/10 12:00	8.00	-1.143
2019/5/17 12:00	7.78	-1.357
2019/5/24 12:00	8.49	-0.652
2019/5/31 12:00	7.99	-1.146
2019/6/7 12:00	7.96	-1.280
2019/6/14 12:00	8.47	-0.666
2019/6/21 12:00	8.53	-0.613
2019/6/28 12:00	8.56	-0.581
2019/7/5 12:00	8.65	-0.489
2019/7/12 12:00	8.50	-0.643
2019/7/19 12:00	8.61	-0.533
2019/7/26 12:00	8.46	-0.678
2019/8/2 12:00	8.44	-0.689
2019/8/9 12:00	8.00	-1.138
2019/8/16 12:00	8.43	-0.712
2019/8/23 12:00	8.28	-0.871
2019/8/30 12:00	8.45	-0.691
2019/9/6 12:00	8.26	-0.878
2019/9/13 12:00	8.52	-0.618
2019/9/20 12:00	8.47	-0.673
2019/9/27 12:00	8.44	-0.688
2019/10/4 12:00	8.02	-1.122
2019/10/11 12:00	7.97	-1.171
2019/10/18 12:00	8.59	-0.550
2019/10/25 12:00	8.78	-0.361
2019/11/1 12:00	8.60	-0.544
2019/11/8 12:00	8.49	-0.654
2019/11/15 12:00	8.44	-0.685
2019/11/22 12:00	7.91	-1.227
2019/11/29 12:00	8.53	-0.614
2019/12/6 12:00	8.44	-0.701
2019/12/13 12:00	7.96	-1.179
2019/12/20 12:00	7.94	-1.200
2019/12/27 12:00	8.03	-1.106
2020/1/3 12:00	7.88	-1.259
2020/1/10 12:00	7.86	-1.281
2020/1/17 12:00	-	-
2020/1/24 12:00	-	-
2020/1/31 12:00	-	-
2020/2/7 12:00	-	-
2020/2/14 12:00	-	-
2020/2/21 12:00	-	-
2020/2/28 12:00	-	-
2020/3/6 12:00	-	-
2020/3/13 12:00	-	-
2020/3/20 12:00	-	-
2020/3/27 12:00	-	-
2020/4/3 12:00	-	-
2020/4/10 12:00	-	-
2020/4/17 12:00	-	-
2020/4/24 12:00	-	-
2020/5/1 12:00	-	-
2020/5/8 12:00	-	-
2020/5/15 12:00	-	-
2020/5/22 12:00	-	-
2020/5/29 12:00	-	-
2020/6/5 12:00	-	-
2020/6/12 12:00	-	-
2020/6/19 12:00	-	-
2020/6/26 12:00	-	-
2020/7/3 12:00	-	-
2020/7/10 12:00	-	-
2020/7/17 12:00	-	-
2020/7/24 12:00	-	-
2020/7/31 12:00	-	-
2020/8/7 12:00	-	-
2020/8/14 12:00	-	-
2020/8/18	7.94	-1.200
2020/8/20	-	-
2020/8/21 12:00	-	-
2020/8/25 12:00	-	-
2021/2/17	-	-
2021/2/19	-	-
2021/2/22	-	-
2021/2/23	7.49	-1.650
2021/2/26	-	-
2021/8/17	-	-
2021/8/19	-	-
2021/8/29	8.23	-0.890
2021/8/30	-	-
1段階目水位	7.84	-1.30
2段階目水位	7.75	-1.39
3段階目水位	7.66	-1.48
最終水位	7.66	-1.48

[決下欄]	
事業区域名	4丁目
計測地点名	4F
計測日	決下欄 (cm)
2017/1/25 12:00	0.0
2017/1/25 12:00	0.2
2018/1/5 12:00	0.2
2018/1/12 12:00	0.3
2018/1/19 12:00	0.3
2018/1/26 12:00	0.3
2018/2/2 12:00	0.3
2018/2/9 12:00	0.3
2018/2/16 12:00	0.3
2018/2/23 12:00	0.3
2018/3/2 12:00	0.3
2018/3/9 12:00	0.3
2018/3/16 12:00	0.3
2018/3/23 12:00	0.2
2018/3/30 12:00	0.2
2018/4/6 12:00	0.2
2018/4/13 12:00	0.2
2018/4/20 12:00	0.3
2018/4/27 12:00	0.3
2018/5/4 12:00	0.2
2018/5/11 12:00	0.2
2018/5/18 12:00	0.2
2018/5/25 12:00	0.3
2018/6/1 12:00	0.2
2018/6/8 12:00	0.2
2018/6/15 12:00	0.3
2018/6/22 12:00	0.3
2018/6/29 12:00	0.3
2018/7/6 12:00	0.3
2018/7/13 12:00	0.3
2018/7/20 12:00	0.4
2018/7/27 12:00	0.4
2018/8/3 12:00	0.4
2018/8/10 12:00	0.4
2018/8/17 12:00	0.5
2018/8/24 12:00	0.5
2018/8/31 12:00	0.5
2018/9/7 12:00	0.5
2018/9/14 12:00	0.5
2018/9/21 12:00	0.5
2018/9/28 12:00	0.5
2018/10/5 12:00	0.5
2018/10/12 12:00	0.5
2018/10/19 12:00	0.5
2018/10/26 12:00	0.5
2018/11/2 12:00	0.6
2018/11/9 12:00	0.6
2018/11/16 12:00	0.6
2018/11/23 12:00	0.6
2018/11/30 12:00	0.7
2018/12/7 12:00	0.7
2018/12/14 12:00	0.7
2018/12/21 12:00	0.7
2018/12/28 12:00	0.7
2019/1/4 12:00	0.8
2019/1/11 12:00	0.8
2019/1/18 12:00	0.8
2019/1/25 12:00	0.8
2019/2/1 12:00	0.9
2019/2/8 12:00	0.9
2019/2/15 12:00	0.9
2019/2/22 12:00	0.9
2019/3/1 12:00	0.9
2019/3/8 12:00	0.9
2019/3/15 12:00	0.9
2019/3/22 12:00	0.9
2019/3/29 12:00	0.9
2019/4/5 12:00	0.9
2019/4/12 12:00	0.9
2019/4/19 12:00	0.9
2019/4/26 12:00	0.9
2019/5/3 12:00	0.9
2019/5/10 12:00	0.9
2019/5/17 12:00	0.9
2019/5/24 12:00	0.9
2019/5/31 12:00	0.9
2019/6/7 12:00	0.9
2019/6/14 12:00	0.9
2019/6/21 12:00	0.9
2019/6/28 12:00	0.9
2019/7/5 12:00	0.8
2019/7/12 12:00	0.8
2019/7/19 12:00	0.8
2019/7/26 12:00	0.8
2019/8/2 12:00	0.8
2019/8/9 12:00	0.8
2019/8/16 12:00	0.8
2019/8/23 12:00	0.9
2019/8/30 12:00	0.9
2019/9/6 12:00	0.9
2019/9/13 12:00	0.9
2019/9/20 12:00	0.9
2019/9/27 12:00	0.9
2019/10/4 12:00	0.9
2019/10/11 12:00	0.9
2019/10/18 12:00	0.9
2019/10/25 12:00	0.8
2019/11/1 12:00	0.8
2019/11/8 12:00	0.8
2019/11/15 12:00	0.8
2019/11/22 12:00	0.9
2019/11/29 12:00	0.9
2019/12/6 12:00	0.9
2019/12/13 12:00	0.9
2019/12/20 12:00	0.9
2019/12/27 12:00	0.9
2020/1/3 12:00	0.9
2020/1/10 12:00	1.0
2020/1/17 12:00	-
2020/1/24 12:00	-
2020/1/31 12:00	-
2020/2/7 12:00	-
2020/2/14 12:00	-
2020/2/21 12:00	-
2020/2/28 12:00	-
2020/3/6 12:00	-
2020/3/13 12:00	-
2020/3/20 12:00	-
2020/3/27 12:00	-
2020/4/3 12:00	-
2020/4/10 12:00	-
2020/4/17 12:00	-
2020/4/24 12:00	-
2020/5/1 12:00	-
2020/5/8 12:00	-
2020/5/15 12:00	-
2020/5/22 12:00	-
2020/5/29 12:00	-
2020/6/5 12:00	-
2020/6/12 12:00	-
2020/6/19 12:00	-
2020/6/26 12:00	-
2020/7/3 12:00	-
2020/7/10 12:00	-
2020/7/17 12:00	-
2020/7/24 12:00	-
2020/7/31 12:00	-
2020/8/7 12:00	-
2020/8/14 12:00	-
2020/8/18	-
2020/8/20	-
2020/8/21 12:00	-
2020/8/23 12:00	-
2021/2/11	-
2021/2/18	-
2021/2/19	-
2021/2/22	1.0
2021/2/25	-
2021/2/26	-
2021/8/17	0.3
2021/8/19	-
2021/8/29	-
2021/8/30	-

[地下水位]		
事業区域名	7-12丁目(其地部)	
計測地点名	計測地点標高	
(T.P.m)	(T.P.m)	
計測日	地下水位	地下水位
	(T.P.m)	(Glm)
2017/11/25 12:00	7.23	-1.266
2017/12/25 12:00	6.78	-1.718
2018/1/9 12:00	6.69	-1.808
2018/1/12 12:00	6.65	-1.846
2018/1/19 12:00	6.66	-1.844
2018/1/26 12:00	6.70	-1.802
2018/2/2 12:00	6.65	-1.850
2018/2/9 12:00	6.66	-1.839
2018/2/16 12:00	6.69	-1.814
2018/2/23 12:00	6.65	-1.849
2018/3/2 12:00	6.72	-1.781
2018/3/9 12:00	6.82	-1.682
2018/3/16 12:00	7.06	-1.442
2018/3/23 12:00	7.20	-1.296
2018/3/30 12:00	7.14	-1.358
2018/4/6 12:00	7.14	-1.357
2018/4/13 12:00	7.08	-1.419
2018/4/20 12:00	7.06	-1.415
2018/4/27 12:00	7.18	-1.318
2018/5/4 12:00	7.21	-1.288
2018/5/11 12:00	7.21	-1.285
2018/5/18 12:00	7.29	-1.207
2018/5/25 12:00	7.23	-1.269
2018/6/1 12:00	7.18	-1.318
2018/6/8 12:00	7.10	-1.397
2018/6/15 12:00	7.10	-1.403
2018/6/22 12:00	7.11	-1.391
2018/6/29 12:00	7.02	-1.480
2018/7/6 12:00	6.96	-1.537
2018/7/13 12:00	6.98	-1.516
2018/7/20 12:00	6.92	-1.583
2018/7/27 12:00	6.86	-1.649
2018/8/3 12:00	6.94	-1.585
2018/8/10 12:00	6.85	-1.651
2018/8/17 12:00	6.71	-1.729
2018/8/24 12:00	6.67	-1.828
2018/8/31 12:00	6.60	-1.898
2018/9/7 12:00	6.80	-1.704
2018/9/14 12:00	6.82	-1.682
2018/9/21 12:00	6.90	-1.602
2018/9/28 12:00	7.10	-1.401
2018/10/5 12:00	7.05	-1.449
2018/10/12 12:00	6.89	-1.611
2018/10/19 12:00	6.79	-1.714
2018/10/26 12:00	6.70	-1.798
2018/11/2 12:00	6.62	-1.882
2018/11/9 12:00	6.62	-1.882
2018/11/16 12:00	6.54	-1.957
2018/11/23 12:00	6.49	-2.006
2018/11/30 12:00	6.43	-2.072
2018/12/7 12:00	6.40	-2.096
2018/12/14 12:00	6.41	-2.089
2018/12/21 12:00	6.37	-2.132
2018/12/28 12:00	6.33	-2.170
2019/1/4 12:00	6.24	-2.258
2019/1/11 12:00	6.24	-2.258
2019/1/18 12:00	6.22	-2.282
2019/1/25 12:00	6.18	-2.315
2019/2/1 12:00	6.21	-2.294
2019/2/8 12:00	6.23	-2.255
2019/2/15 12:00	6.22	-2.284
2019/2/22 12:00	6.23	-2.268
2019/3/1 12:00	2.57	-5.834
2019/3/8 12:00	3.86	-4.617
2019/3/15 12:00	6.44	-2.061
2019/3/22 12:00	6.54	-1.955
2019/3/29 12:00	6.42	-2.060
2019/4/5 12:00	6.40	-2.095
2019/4/12 12:00	6.38	-2.124
2019/4/19 12:00	6.42	-2.081
2019/4/26 12:00	6.41	-2.092
2019/5/3 12:00	6.49	-2.007
2019/5/10 12:00	6.52	-1.979
2019/5/17 12:00	6.45	-2.049
2019/5/24 12:00	6.65	-1.849
2019/5/31 12:00	6.59	-1.907
2019/6/7 12:00	6.52	-1.979
2019/6/14 12:00	6.70	-1.801
2019/6/21 12:00	6.81	-1.684
2019/6/28 12:00	6.93	-1.571
2019/7/5 12:00	6.99	-1.516
2019/7/12 12:00	6.80	-1.702
2019/7/19 12:00	6.93	-1.589
2019/7/26 12:00	6.78	-1.718
2019/8/2 12:00	6.66	-1.805
2019/8/9 12:00	6.61	-1.891
2019/8/16 12:00	6.58	-1.916
2019/8/23 12:00	6.53	-1.974
2019/8/30 12:00	6.62	-1.883
2019/9/6 12:00	6.54	-1.962
2019/9/13 12:00	6.73	-1.767
2019/9/20 12:00	6.65	-1.853
2019/9/27 12:00	6.59	-1.910
2019/10/4 12:00	6.55	-1.954
2019/10/11 12:00	6.46	-2.043
2019/10/18 12:00	7.04	-1.457
2019/10/25 12:00	7.02	-1.480
2019/11/1 12:00	6.89	-1.607
2019/11/8 12:00	6.66	-1.821
2019/11/15 12:00	6.54	-1.960
2019/11/22 12:00	6.42	-2.084
2019/11/29 12:00	6.71	-1.792
2019/12/6 12:00	6.50	-1.941
2019/12/13 12:00	6.45	-2.047
2019/12/20 12:00	6.41	-2.088
2019/12/27 12:00	6.46	-2.037
2020/1/3 12:00	6.37	-2.134
2020/1/10 12:00	6.33	-2.167
2020/1/17 12:00	6.29	-2.214
2020/1/24 12:00	6.26	-2.241
2020/1/31 12:00	6.47	-2.034
2020/2/7 12:00	6.36	-2.140
2020/2/14 12:00	6.37	-2.132
2020/2/21 12:00	6.26	-2.241
2020/2/28 12:00	6.30	-2.204
2020/3/6 12:00	6.30	-2.201
2020/3/13 12:00	6.29	-2.212
2020/3/20 12:00	6.42	-2.083
2020/3/27 12:00	6.37	-2.133
2020/4/3 12:00	6.58	-1.930
2020/4/10 12:00	6.55	-1.949
2020/4/17 12:00	6.60	-1.895
2020/4/24 12:00	6.75	-1.729
2020/5/1 12:00	6.62	-1.816
2020/5/8 12:00	6.63	-1.812
2020/5/15 12:00	6.57	-1.831
2020/5/22 12:00	6.63	-1.846
2020/5/29 12:00	6.68	-1.824
2020/6/5 12:00	6.62	-1.876
2020/6/12 12:00	6.58	-1.916
2020/6/19 12:00	6.76	-1.737
2020/6/26 12:00	6.82	-1.680
2020/7/3 12:00	6.99	-1.513
2020/7/10 12:00	7.03	-1.466
2020/7/17 12:00	6.89	-1.605
2020/7/24 12:00	6.84	-1.655
2020/7/31 12:00	6.92	-1.576
2020/8/7 12:00	6.76	-1.717
2020/8/14 12:00	6.64	-1.864
2020/8/18	-	-
2020/8/20	-	-
2020/8/21 12:00	6.53	-1.970
2020/8/25 12:00	6.46	-2.017
2021/2/17	-	-
2021/2/18	-	-
2021/2/19	-	-
2021/2/22	-	-
2021/2/23	6.49	-2.010
2021/2/26	-	-
2021/8/17	-	-
2021/8/19	-	-
2021/8/29	6.99	-1.510
2021/8/30	-	-
1段階目水位	7.19	-1.31
2018/2/24推定	-	-
3段階目水位	7.15	-1.36
2018/5/24推定	-	-
最終水位	7.10	-1.40
2018/8/24推定	-	-

[地下水]	
事業区域名	7・12丁目(民権部)
計測地点名	7-2 次下量 (cm)
計測日	
2017/1/25 12:00	0.0
2017/1/25 12:00	0.1
2018/1/5 12:00	0.1
2018/1/12 12:00	0.1
2018/1/19 12:00	0.1
2018/1/26 12:00	0.1
2018/2/2 12:00	0.2
2018/2/9 12:00	0.2
2018/2/16 12:00	0.2
2018/2/23 12:00	0.2
2018/3/2 12:00	0.2
2018/3/9 12:00	0.2
2018/3/16 12:00	0.2
2018/3/23 12:00	0.2
2018/4/30 12:00	0.2
2018/4/6 12:00	0.2
2018/4/13 12:00	0.2
2018/4/20 12:00	0.2
2018/4/27 12:00	0.2
2018/5/4 12:00	0.2
2018/5/11 12:00	0.2
2018/5/18 12:00	0.2
2018/5/25 12:00	0.2
2018/6/1 12:00	0.2
2018/6/8 12:00	0.2
2018/6/15 12:00	0.2
2018/6/22 12:00	0.2
2018/6/29 12:00	0.2
2018/7/6 12:00	0.3
2018/7/13 12:00	0.3
2018/7/20 12:00	0.3
2018/7/27 12:00	0.3
2018/8/3 12:00	0.4
2018/8/10 12:00	0.4
2018/8/17 12:00	0.4
2018/8/24 12:00	0.5
2018/8/31 12:00	0.5
2018/9/7 12:00	0.5
2018/9/14 12:00	0.5
2018/9/21 12:00	0.5
2018/9/28 12:00	0.5
2018/10/5 12:00	0.5
2018/10/12 12:00	0.5
2018/10/19 12:00	0.5
2018/10/26 12:00	0.5
2018/11/2 12:00	0.5
2018/11/9 12:00	0.5
2018/11/16 12:00	0.5
2018/11/23 12:00	0.5
2018/11/30 12:00	0.5
2018/12/7 12:00	0.6
2018/12/14 12:00	0.6
2018/12/21 12:00	0.6
2018/12/28 12:00	0.6
2019/1/4 12:00	0.6
2019/1/11 12:00	0.6
2019/1/18 12:00	0.7
2019/1/25 12:00	0.7
2019/2/1 12:00	0.7
2019/2/8 12:00	0.7
2019/2/15 12:00	0.7
2019/2/22 12:00	0.7
2019/3/1 12:00	0.8
2019/3/8 12:00	0.8
2019/3/15 12:00	0.7
2019/3/22 12:00	0.7
2019/3/29 12:00	0.7
2019/4/5 12:00	0.7
2019/4/12 12:00	0.7
2019/4/19 12:00	0.7
2019/4/26 12:00	0.8
2019/5/3 12:00	0.8
2019/5/10 12:00	0.8
2019/5/17 12:00	0.8
2019/5/24 12:00	0.8
2019/5/31 12:00	0.8
2019/6/7 12:00	0.8
2019/6/14 12:00	0.8
2019/6/21 12:00	0.8
2019/6/28 12:00	0.8
2019/7/5 12:00	0.8
2019/7/12 12:00	0.8
2019/7/19 12:00	0.8
2019/7/26 12:00	0.8
2019/8/2 12:00	0.8
2019/8/9 12:00	0.8
2019/8/16 12:00	0.8
2019/8/23 12:00	0.8
2019/8/30 12:00	0.8
2019/9/6 12:00	0.8
2019/9/13 12:00	0.9
2019/9/20 12:00	0.8
2019/9/27 12:00	0.9
2019/10/4 12:00	0.8
2019/10/11 12:00	0.9
2019/10/18 12:00	0.8
2019/10/25 12:00	0.8
2019/11/1 12:00	0.8
2019/11/8 12:00	0.8
2019/11/15 12:00	0.8
2019/11/22 12:00	0.8
2019/11/29 12:00	0.8
2019/12/6 12:00	0.8
2019/12/13 12:00	0.8
2019/12/20 12:00	0.8
2019/12/27 12:00	0.8
2020/1/3 12:00	0.8
2020/1/10 12:00	0.8
2020/1/17 12:00	0.8
2020/1/24 12:00	0.8
2020/1/31 12:00	0.8
2020/2/7 12:00	0.9
2020/2/14 12:00	0.8
2020/2/21 12:00	0.9
2020/2/28 12:00	0.9
2020/3/6 12:00	0.9
2020/3/13 12:00	0.9
2020/3/20 12:00	0.9
2020/3/27 12:00	0.9
2020/4/3 12:00	0.9
2020/4/10 12:00	0.9
2020/4/17 12:00	0.9
2020/4/24 12:00	0.8
2020/5/1 12:00	0.9
2020/5/8 12:00	0.9
2020/5/15 12:00	0.9
2020/5/22 12:00	0.9
2020/5/29 12:00	0.9
2020/6/5 12:00	0.9
2020/6/12 12:00	0.9
2020/6/19 12:00	0.9
2020/6/26 12:00	0.9
2020/7/3 12:00	0.9
2020/7/10 12:00	0.9
2020/7/17 12:00	0.9
2020/7/24 12:00	0.9
2020/7/31 12:00	0.9
2020/8/7 12:00	0.9
2020/8/14 12:00	0.9
2020/8/18	0.7
2020/8/20	-
2020/8/21 12:00	0.9
2020/8/23 12:00	0.9
2021/2/11	-
2021/2/18	-
2021/2/19	-
2021/2/22	1.0
2021/2/25	-
2021/2/26	-
2021/8/17	1.2
2021/8/19	-
2021/8/29	-
2021/8/30	-

[決下量]				
事業区域名	7+12目(道路部)			
	決下量	決下量	決下量	決下量
計測日	決下量 (cm)	決下量 (cm)	決下量 (cm)	決下量 (cm)
2017/1/25 12:00	0.0	0.0	0.0	0.0
2017/1/25 12:00	0.1	0.2	0.2	0.1
2018/1/5 12:00	0.1	0.2	0.3	0.1
2018/1/12 12:00	0.1	0.3	0.3	0.2
2018/1/19 12:00	0.1	0.3	0.3	0.2
2018/1/26 12:00	0.1	0.3	0.3	0.2
2018/2/2 12:00	0.1	0.4	0.4	0.2
2018/2/9 12:00	0.2	0.4	0.4	0.2
2018/2/16 12:00	0.2	0.4	0.4	0.2
2018/2/23 12:00	0.2	0.4	0.4	0.2
2018/2/29 12:00	0.2	0.4	0.4	0.3
2018/3/9 12:00	0.2	0.4	0.4	0.3
2018/3/16 12:00	0.2	0.4	0.3	0.2
2018/3/23 12:00	0.2	0.4	0.3	0.2
2018/3/30 12:00	0.2	0.4	0.3	0.2
2018/4/6 12:00	0.2	0.3	0.3	0.2
2018/4/13 12:00	0.2	0.4	0.3	0.2
2018/4/20 12:00	0.2	0.4	0.3	0.2
2018/4/27 12:00	0.2	0.4	0.3	0.2
2018/5/4 12:00	0.2	0.3	0.3	0.2
2018/5/11 12:00	0.2	0.4	0.3	0.2
2018/5/18 12:00	0.2	0.3	0.2	0.2
2018/5/25 12:00	0.2	0.3	0.2	0.2
2018/6/1 12:00	0.2	0.3	0.3	0.3
2018/6/8 12:00	0.2	0.4	0.3	0.3
2018/6/15 12:00	0.2	0.4	0.3	0.3
2018/6/22 12:00	0.2	0.4	0.3	0.3
2018/6/29 12:00	0.3	0.4	0.4	0.3
2018/7/6 12:00	0.3	0.4	0.4	0.4
2018/7/13 12:00	0.3	0.4	0.4	0.4
2018/7/20 12:00	0.3	0.5	0.4	0.4
2018/7/27 12:00	0.4	0.5	0.4	0.4
2018/8/3 12:00	0.4	0.5	0.4	0.5
2018/8/10 12:00	0.4	0.5	0.5	0.5
2018/8/17 12:00	0.4	0.5	0.5	0.5
2018/8/24 12:00	0.5	0.6	0.6	0.6
2018/8/31 12:00	0.5	0.6	0.6	0.6
2018/9/7 12:00	0.5	0.6	0.6	0.6
2018/9/14 12:00	0.5	0.6	0.6	0.6
2018/9/21 12:00	0.5	0.6	0.6	0.6
2018/9/28 12:00	0.5	0.6	0.6	0.6
2018/10/5 12:00	0.5	0.5	0.6	0.6
2018/10/12 12:00	0.5	0.6	0.6	0.6
2018/10/19 12:00	0.5	0.6	0.6	0.6
2018/10/26 12:00	0.5	0.6	0.7	0.6
2018/11/2 12:00	0.5	0.6	0.7	0.6
2018/11/9 12:00	0.5	0.7	0.7	0.6
2018/11/16 12:00	0.5	0.7	0.7	0.6
2018/11/23 12:00	0.5	0.7	0.7	0.6
2018/11/30 12:00	0.5	0.7	0.8	0.6
2018/12/7 12:00	0.5	0.7	0.8	0.6
2018/12/14 12:00	0.6	0.8	0.8	0.7
2018/12/21 12:00	0.6	0.8	0.8	0.7
2018/12/28 12:00	0.6	0.8	0.8	0.7
2019/1/4 12:00	0.6	0.8	0.8	0.7
2019/1/11 12:00	0.6	0.8	0.9	0.7
2019/1/18 12:00	0.6	0.8	0.9	0.7
2019/1/25 12:00	0.6	0.9	1.0	0.8
2019/2/1 12:00	0.6	0.9	1.0	0.8
2019/2/8 12:00	0.7	0.9	1.0	0.8
2019/2/15 12:00	0.7	1.0	1.0	0.8
2019/2/22 12:00	0.7	1.0	1.1	0.8
2019/3/1 12:00	0.7	1.0	1.1	0.8
2019/3/8 12:00	0.7	1.0	1.0	0.8
2019/3/15 12:00	0.7	0.9	1.0	0.8
2019/3/22 12:00	0.7	0.9	1.0	0.8
2019/3/29 12:00	0.7	0.9	1.0	0.8
2019/4/5 12:00	0.7	0.9	1.0	0.8
2019/4/12 12:00	0.7	1.0	1.0	0.8
2019/4/19 12:00	0.7	0.9	1.0	0.8
2019/4/26 12:00	0.7	1.0	1.0	0.8
2019/5/3 12:00	0.7	0.9	1.0	0.8
2019/5/10 12:00	0.7	0.9	0.9	0.8
2019/5/17 12:00	0.8	0.9	0.9	0.9
2019/5/24 12:00	0.7	0.9	0.9	0.9
2019/5/31 12:00	0.8	0.9	0.9	0.9
2019/6/7 12:00	0.8	0.9	0.9	0.9
2019/6/14 12:00	0.8	0.9	0.9	0.9
2019/6/21 12:00	0.8	0.9	0.9	0.9
2019/6/28 12:00	0.7	0.8	0.9	0.9
2019/7/5 12:00	0.7	0.9	0.9	0.9
2019/7/12 12:00	0.7	0.9	0.9	0.9
2019/7/19 12:00	0.7	0.9	0.9	0.9
2019/7/26 12:00	0.8	0.9	1.0	0.9
2019/8/2 12:00	0.8	0.9	1.0	0.9
2019/8/9 12:00	0.8	0.9	1.0	0.9
2019/8/16 12:00	0.8	0.9	1.0	0.9
2019/8/23 12:00	0.8	0.9	1.0	0.9
2019/8/30 12:00	0.8	0.9	1.0	1.0
2019/9/6 12:00	0.8	1.0	1.1	1.0
2019/9/13 12:00	0.8	1.0	1.0	1.0
2019/9/20 12:00	0.8	1.0	1.0	1.0
2019/9/27 12:00	0.8	1.0	1.1	1.0
2019/10/4 12:00	0.8	1.0	1.1	0.9
2019/10/11 12:00	0.8	1.0	1.1	1.0
2019/10/18 12:00	0.8	0.9	1.0	0.9
2019/10/25 12:00	0.8	0.9	1.0	0.9
2019/11/1 12:00	0.8	0.9	1.0	0.9
2019/11/8 12:00	0.8	0.9	1.0	0.9
2019/11/15 12:00	0.8	0.9	1.1	0.9
2019/11/22 12:00	0.8	0.9	1.0	0.9
2019/11/29 12:00	0.8	0.9	1.0	0.9
2019/12/6 12:00	0.8	0.9	1.1	0.9
2019/12/13 12:00	0.8	1.0	1.1	0.9
2019/12/20 12:00	0.8	1.0	1.1	0.9
2019/12/27 12:00	0.8	1.0	1.1	0.9
2020/1/3 12:00	0.8	1.0	1.2	0.9
2020/1/10 12:00	0.8	1.0	1.2	0.9
2020/1/17 12:00	0.8	1.1	1.2	0.9
2020/1/24 12:00	0.8	1.1	1.2	0.9
2020/1/31 12:00	0.8	1.0	1.2	0.9
2020/2/7 12:00	0.8	1.1	1.2	0.9
2020/2/14 12:00	0.8	1.1	1.2	0.9
2020/2/21 12:00	0.8	1.1	1.2	1.0
2020/2/28 12:00	0.8	1.1	1.2	1.0
2020/3/6 12:00	0.8	1.1	1.2	1.0
2020/3/13 12:00	0.8	1.1	1.3	0.9
2020/3/20 12:00	0.8	1.1	1.2	0.9
2020/3/27 12:00	0.8	1.1	1.3	1.0
2020/4/3 12:00	0.8	1.1	1.2	1.0
2020/4/10 12:00	0.8	1.1	1.2	0.9
2020/4/17 12:00	0.8	1.1	1.3	1.0
2020/4/24 12:00	0.8	1.0	1.2	0.9
2020/5/1 12:00	0.8	1.0	1.2	0.9
2020/5/8 12:00	0.8	1.0	1.1	1.0
2020/5/15 12:00	0.8	1.0	1.1	1.0
2020/5/22 12:00	0.8	1.0	1.1	1.0
2020/5/29 12:00	0.8	1.0	1.1	1.0
2020/6/5 12:00	0.8	1.0	1.2	1.0
2020/6/12 12:00	0.8	1.0	1.2	1.0
2020/6/19 12:00	0.8	1.1	1.2	1.0
2020/6/26 12:00	0.8	1.1	1.2	1.0
2020/7/3 12:00	0.8	1.0	1.2	1.0
2020/7/10 12:00	0.8	1.0	1.2	1.0
2020/7/17 12:00	0.8	1.0	1.2	1.0
2020/7/24 12:00	0.8	1.0	1.2	1.0
2020/7/31 12:00	0.8	1.0	1.2	1.0
2020/8/7 12:00	0.8	1.0	1.2	1.0
2020/8/14 12:00	0.8	1.1	1.2	1.0
2020/8/18	-	-	-	0.9
2020/8/20	-	-	-	-
2020/8/21 12:00	0.9	1.1	1.3	1.0
2020/8/25 12:00	0.9	1.1	1.3	1.1
2021/2/11	-	-	-	-
2021/2/18	-	-	-	-
2021/2/19	-	-	-	-
2021/2/22	1.1	-	-	1.1
2021/2/25	-	-	-	-
2021/2/26	-	-	-	-
2021/8/17	1.1	-	-	1.4
2021/8/19	-	1.2	1.3	-
2021/8/29	-	-	-	-
2021/8/30	-	-	-	-

※決下は実量

[地下水]		8丁目(道路部)	
事業区域名	計測地点名	計測地点標高(T.P.m)	地下水水位(G.l.m)
計測日	地下水水位(T.P.m)	地下水水位(G.l.m)	
2017/11/25 12:00	7.71	-1.227	
2017/12/25 12:00	7.30	-1.640	
2018/1/9 12:00	7.29	-1.651	
2018/1/12 12:00	7.27	-1.666	
2018/1/19 12:00	7.28	-1.662	
2018/1/26 12:00	7.36	-1.577	
2018/2/2 12:00	7.37	-1.566	
2018/2/9 12:00	7.41	-1.535	
2018/2/16 12:00	7.43	-1.512	
2018/2/23 12:00	7.45	-1.493	
2018/3/2 12:00	7.61	-1.332	
2018/3/9 12:00	7.93	-1.006	
2018/3/16 12:00	7.92	-1.024	
2018/3/23 12:00	7.92	-1.021	
2018/3/30 12:00	7.89	-1.047	
2018/4/6 12:00	7.83	-1.110	
2018/4/13 12:00	7.72	-1.215	
2018/4/20 12:00	7.74	-1.202	
2018/4/27 12:00	7.86	-1.083	
2018/5/4 12:00	7.89	-1.142	
2018/5/11 12:00	7.93	-1.014	
2018/5/18 12:00	7.92	-1.024	
2018/5/25 12:00	7.77	-1.171	
2018/6/1 12:00	7.63	-1.311	
2018/6/8 12:00	7.63	-1.313	
2018/6/15 12:00	7.47	-1.474	
2018/6/22 12:00	7.42	-1.521	
2018/6/29 12:00	7.50	-1.444	
2018/7/6 12:00	7.41	-1.526	
2018/7/13 12:00	7.47	-1.468	
2018/7/20 12:00	7.50	-1.436	
2018/7/27 12:00	7.47	-1.468	
2018/8/3 12:00	5.76	-3.178	
2018/8/10 12:00	5.77	-3.175	
2018/8/17 12:00	5.78	-3.163	
2018/8/24 12:00	5.78	-3.162	
2018/8/31 12:00	6.66	-2.279	
2018/9/7 12:00	5.88	-3.057	
2018/9/14 12:00	5.70	-3.213	
2018/9/21 12:00	5.88	-3.055	
2018/9/28 12:00	5.89	-3.052	
2018/10/5 12:00	5.89	-3.052	
2018/10/12 12:00	5.89	-3.049	
2018/10/19 12:00	5.90	-3.045	
2018/10/26 12:00	5.90	-3.044	
2018/11/2 12:00	5.90	-3.040	
2018/11/9 12:00	5.90	-3.039	
2018/11/16 12:00	5.90	-3.039	
2018/11/23 12:00	5.91	-3.036	
2018/11/30 12:00	5.90	-3.036	
2018/12/7 12:00	5.90	-3.035	
2018/12/14 12:00	5.91	-3.032	
2018/12/21 12:00	5.91	-3.028	
2018/12/28 12:00	5.91	-3.027	
2019/1/4 12:00	5.92	-3.024	
2019/1/11 12:00	5.92	-3.021	
2019/1/18 12:00	5.92	-3.020	
2019/1/25 12:00	5.92	-3.019	
2019/2/1 12:00	5.92	-3.018	
2019/2/8 12:00	5.92	-3.022	
2019/2/15 12:00	5.92	-3.019	
2019/2/22 12:00	5.92	-3.022	
2019/3/1 12:00	5.91	-3.030	
2019/3/8 12:00	5.91	-3.032	
2019/3/15 12:00	5.91	-3.026	
2019/3/22 12:00	5.91	-3.028	
2019/3/29 12:00	5.90	-3.035	
2019/4/5 12:00	5.91	-3.033	
2019/4/12 12:00	5.88	-3.080	
2019/4/19 12:00	5.84	-3.101	
2019/4/26 12:00	5.76	-3.180	
2019/5/3 12:00	5.75	-3.186	
2019/5/10 12:00	5.75	-3.192	
2019/5/17 12:00	5.75	-3.181	
2019/5/24 12:00	5.75	-3.194	
2019/5/31 12:00	5.90	-3.036	
2019/6/7 12:00	5.90	-3.037	
2019/6/14 12:00	5.90	-3.040	
2019/6/21 12:00	5.90	-3.043	
2019/6/28 12:00	5.89	-3.046	
2019/7/5 12:00	5.89	-3.051	
2019/7/12 12:00	5.89	-3.048	
2019/7/19 12:00	5.89	-3.050	
2019/7/26 12:00	5.89	-3.051	
2019/8/2 12:00	5.88	-3.051	
2019/8/9 12:00	5.88	-3.056	
2019/8/16 12:00	5.88	-3.063	
2019/8/23 12:00	5.89	-3.047	
2019/8/30 12:00	5.87	-3.072	
2019/9/6 12:00	5.87	-3.069	
2019/9/13 12:00	5.86	-3.083	
2019/9/20 12:00	5.86	-3.077	
2019/9/27 12:00	5.86	-3.077	
2019/10/4 12:00	5.87	-3.067	
2019/10/11 12:00	5.89	-3.062	
2019/10/18 12:00	5.88	-3.076	
2019/10/25 12:00	5.88	-3.056	
2019/11/1 12:00	5.88	-3.063	
2019/11/8 12:00	5.92	-3.019	
2019/11/15 12:00	5.93	-3.015	
2019/11/22 12:00	5.95	-2.986	
2019/11/29 12:00	5.87	-3.073	
2019/12/6 12:00	5.87	-3.073	
2019/12/13 12:00	5.88	-3.063	
2019/12/20 12:00	5.89	-3.046	
2019/12/27 12:00	5.92	-3.019	
2020/1/3 12:00	5.91	-2.986	
2020/1/10 12:00	5.99	-2.949	
2020/1/17 12:00	6.02	-2.916	
2020/1/24 12:00	6.01	-2.906	
2020/1/31 12:00	5.90	-3.042	
2020/2/7 12:00	5.89	-3.052	
2020/2/14 12:00	5.89	-3.052	
2020/2/21 12:00	5.89	-3.051	
2020/2/28 12:00	5.89	-3.049	
2020/3/6 12:00	5.89	-3.054	
2020/3/13 12:00	5.88	-3.064	
2020/3/20 12:00	5.87	-3.066	
2020/3/27 12:00	5.87	-3.071	
2020/4/3 12:00	-	-	
2020/4/10 12:00	-	-	
2020/4/17 12:00	-	-	
2020/4/24 12:00	-	-	
2020/5/1 12:00	-	-	
2020/5/8 12:00	-	-	
2020/5/15 12:00	-	-	
2020/5/22 12:00	-	-	
2020/5/29 12:00	-	-	
2020/6/5 12:00	-	-	
2020/6/12 12:00	-	-	
2020/6/19 12:00	-	-	
2020/6/26 12:00	-	-	
2020/7/3 12:00	-	-	
2020/7/10 12:00	-	-	
2020/7/17 12:00	-	-	
2020/7/24 12:00	-	-	
2020/7/31 12:00	-	-	
2020/8/7 12:00	-	-	
2020/8/14 12:00	-	-	
2020/8/18	-	-	
2020/8/20	5.85	-3.090	
2020/8/21 12:00	-	-	
2020/8/25 12:00	-	-	
2021/2/17	-	-	
2021/2/18	-	-	
2021/2/19	-	-	
2021/2/22	-	-	
2021/2/23	5.83	-3.110	
2021/2/26	-	-	
2021/8/17	-	-	
2021/8/19	-	-	
2021/8/29	5.95	-2.990	
2021/8/30	-	-	

[沈下量]		B7目(道路部)	
事業区域名	SE	SE1	SE2(沈下量)
計測日	沈下量 (cm)	沈下量 (cm)	沈下量 (cm)
2017/1/25 12:00	0.0	0.0	0.0
2017/1/25 12:00	0.0	0.0	0.1
2018/1/5 12:00	0.3	0.3	0.1
2018/1/12 12:00	0.3	0.3	0.1
2018/1/19 12:00	0.4	0.4	0.1
2018/1/26 12:00	0.4	0.4	0.1
2018/2/2 12:00	0.4	0.4	0.2
2018/2/9 12:00	0.4	0.4	0.2
2018/2/16 12:00	0.4	0.4	0.2
2018/2/23 12:00	0.4	0.4	0.2
2018/3/2 12:00	0.4	0.4	0.2
2018/3/9 12:00	0.4	0.4	0.2
2018/3/16 12:00	0.4	0.4	0.1
2018/3/23 12:00	0.3	0.3	0.1
2018/3/30 12:00	0.3	0.3	0.1
2018/4/6 12:00	0.3	0.3	0.1
2018/4/13 12:00	0.3	0.3	0.1
2018/4/20 12:00	0.4	0.4	0.1
2018/4/27 12:00	0.4	0.4	0.1
2018/5/4 12:00	0.4	0.4	0.1
2018/5/11 12:00	0.4	0.4	0.1
2018/5/18 12:00	0.3	0.3	0.1
2018/5/25 12:00	0.3	0.3	0.1
2018/6/1 12:00	0.4	0.4	0.1
2018/6/8 12:00	0.4	0.4	0.1
2018/6/15 12:00	0.4	0.4	0.1
2018/6/22 12:00	0.4	0.4	0.1
2018/6/29 12:00	0.4	0.4	0.2
2018/7/6 12:00	0.4	0.4	0.2
2018/7/13 12:00	0.3	0.3	0.2
2018/7/20 12:00	0.5	0.5	0.2
2018/7/27 12:00	0.3	0.3	0.2
2018/8/3 12:00	0.6	0.6	0.2
2018/8/10 12:00	0.7	0.7	0.3
2018/8/17 12:00	0.7	0.7	0.3
2018/8/24 12:00	0.8	0.8	0.4
2018/8/31 12:00	0.8	0.8	0.4
2018/9/7 12:00	0.8	0.8	0.4
2018/9/14 12:00	0.9	0.9	0.4
2018/9/21 12:00	0.8	0.8	0.4
2018/9/28 12:00	0.8	0.8	0.3
2018/10/5 12:00	0.8	0.8	0.3
2018/10/12 12:00	0.9	0.9	0.4
2018/10/19 12:00	0.9	0.9	0.4
2018/10/26 12:00	0.9	0.9	0.4
2018/11/2 12:00	1.0	1.0	0.4
2018/11/9 12:00	1.0	1.0	0.4
2018/11/16 12:00	1.2	1.2	0.4
2018/11/23 12:00	1.3	1.3	0.4
2018/11/30 12:00	1.3	1.3	0.4
2018/12/7 12:00	1.3	1.3	0.4
2018/12/14 12:00	1.3	1.3	0.4
2018/12/21 12:00	1.4	1.4	0.5
2018/12/28 12:00	1.4	1.4	0.4
2019/1/4 12:00	1.4	1.4	0.5
2019/1/11 12:00	1.5	1.5	0.5
2019/1/18 12:00	1.5	1.5	0.5
2019/1/25 12:00	1.5	1.5	0.5
2019/2/1 12:00	1.6	1.6	0.5
2019/2/8 12:00	1.6	1.6	0.5
2019/2/15 12:00	1.6	1.6	0.6
2019/2/22 12:00	1.7	1.7	0.6
2019/3/1 12:00	1.7	1.7	0.6
2019/3/8 12:00	1.7	1.7	0.5
2019/3/15 12:00	1.7	1.7	0.5
2019/3/22 12:00	1.7	1.7	0.5
2019/3/29 12:00	1.7	1.7	0.5
2019/4/5 12:00	1.7	1.7	0.5
2019/4/12 12:00	1.7	1.7	0.5
2019/4/19 12:00	1.7	1.7	0.5
2019/4/26 12:00	1.7	1.7	0.5
2019/5/3 12:00	1.7	1.7	0.5
2019/5/10 12:00	1.7	1.7	0.5
2019/5/17 12:00	1.7	1.7	0.5
2019/5/24 12:00	1.7	1.7	0.5
2019/5/31 12:00	1.7	1.7	0.5
2019/6/7 12:00	1.7	1.7	0.5
2019/6/14 12:00	1.7	1.7	0.5
2019/6/21 12:00	1.7	1.7	0.5
2019/6/28 12:00	1.7	1.7	0.4
2019/7/5 12:00	1.7	1.7	0.5
2019/7/12 12:00	1.7	1.7	0.5
2019/7/19 12:00	1.7	1.7	0.5
2019/7/26 12:00	1.7	1.7	0.5
2019/8/2 12:00	1.7	1.7	0.5
2019/8/9 12:00	1.7	1.7	0.5
2019/8/16 12:00	1.7	1.7	0.5
2019/8/23 12:00	1.8	1.8	0.6
2019/8/30 12:00	1.8	1.8	0.6
2019/9/6 12:00	1.8	1.8	0.6
2019/9/13 12:00	1.8	1.8	0.6
2019/9/20 12:00	1.8	1.8	0.6
2019/9/27 12:00	1.8	1.8	0.6
2019/10/4 12:00	1.8	1.8	0.6
2019/10/11 12:00	1.8	1.8	0.6
2019/10/18 12:00	1.8	1.8	0.6
2019/10/25 12:00	1.8	1.8	0.5
2019/11/1 12:00	1.8	1.8	0.5
2019/11/8 12:00	1.8	1.8	0.5
2019/11/15 12:00	1.8	1.8	0.6
2019/11/22 12:00	1.9	1.9	0.6
2019/11/29 12:00	1.8	1.8	0.5
2019/12/6 12:00	1.8	1.8	0.6
2019/12/13 12:00	1.9	1.9	0.6
2019/12/20 12:00	1.9	1.9	0.6
2019/12/27 12:00	1.9	1.9	0.6
2020/1/3 12:00	1.9	1.9	0.6
2020/1/10 12:00	1.9	1.9	0.6
2020/1/17 12:00	2.0	2.0	0.6
2020/1/24 12:00	2.0	2.0	0.6
2020/1/31 12:00	2.0	2.0	0.6
2020/2/7 12:00	2.0	2.0	0.6
2020/2/14 12:00	2.0	2.0	0.6
2020/2/21 12:00	2.0	2.0	0.6
2020/2/28 12:00	2.0	2.0	0.6
2020/3/6 12:00	2.0	2.0	0.6
2020/3/13 12:00	2.1	2.1	0.6
2020/3/20 12:00	2.1	2.1	0.6
2020/3/27 12:00	2.1	2.1	0.7
2020/4/3 12:00	-	-	-
2020/4/10 12:00	-	-	-
2020/4/17 12:00	-	-	-
2020/4/24 12:00	-	-	-
2020/5/1 12:00	-	-	-
2020/5/8 12:00	-	-	-
2020/5/15 12:00	-	-	-
2020/5/22 12:00	-	-	-
2020/5/29 12:00	-	-	-
2020/6/5 12:00	-	-	-
2020/6/12 12:00	-	-	-
2020/6/19 12:00	-	-	-
2020/6/26 12:00	-	-	-
2020/7/3 12:00	-	-	-
2020/7/10 12:00	-	-	-
2020/7/17 12:00	-	-	-
2020/7/24 12:00	-	-	-
2020/7/31 12:00	-	-	-
2020/8/7 12:00	-	-	-
2020/8/14 12:00	-	-	-
2020/8/18	2.2	2.2	0.8
2020/8/20	-	-	-
2020/8/21 12:00	-	-	-
2020/8/25 12:00	-	-	-
2021/2/17	-	-	-
2021/2/18	2.5	2.5	1.0
2021/2/19	-	-	-
2021/2/22	-	-	-
2021/2/25	-	-	-
2021/2/26	-	-	-
2021/2/28	-	-	-
2021/8/11	2.5	2.5	0.9
2021/8/19	-	-	-
2021/8/29	-	-	-
2021/8/30	-	-	-

[沈下観]

事業区域名 観測地点名	11丁目(滋陽部)			
	11E.1 沈下量 (cm)	11E.2 沈下量 (cm)	11E.3 沈下量 (cm)	11E.4 11D.1(ホシノ部) 沈下量 (cm)
計測日				
2017/1/25 12:00	0.0	0.0	0.0	0.0
2017/2/25 12:00	0.1	0.1	0.1	0.1
2018/1/5 12:00	0.2	0.1	0.1	0.1
2018/1/12 12:00	0.2	0.2	0.1	0.2
2018/1/19 12:00	0.3	0.2	0.2	0.1
2018/1/26 12:00	0.2	0.2	0.2	0.1
2018/2/2 12:00	0.2	0.3	0.2	0.1
2018/2/9 12:00	0.3	0.3	0.2	0.2
2018/2/16 12:00	0.3	0.3	0.2	0.3
2018/2/23 12:00	0.3	0.3	0.2	0.3
2018/2/30 12:00	0.3	0.3	0.2	0.3
2018/3/9 12:00	0.3	0.4	0.2	0.3
2018/3/16 12:00	0.3	0.3	0.2	0.3
2018/3/23 12:00	0.3	0.3	0.2	0.3
2018/3/30 12:00	0.3	0.3	0.2	0.3
2018/4/6 12:00	0.3	0.3	0.2	0.3
2018/4/13 12:00	0.3	0.3	0.2	0.3
2018/4/20 12:00	0.3	0.3	0.2	0.3
2018/4/27 12:00	0.3	0.3	0.2	0.3
2018/5/4 12:00	0.3	0.3	0.2	0.3
2018/5/11 12:00	0.3	0.4	0.2	0.3
2018/5/18 12:00	0.3	0.4	0.2	0.3
2018/5/25 12:00	0.3	0.4	0.2	0.3
2018/6/1 12:00	0.3	0.4	0.3	0.4
2018/6/8 12:00	0.3	0.4	0.3	0.4
2018/6/15 12:00	0.4	0.4	0.3	0.4
2018/6/22 12:00	0.4	0.5	0.3	0.5
2018/6/29 12:00	0.4	0.5	0.3	0.5
2018/7/6 12:00	0.4	0.5	0.3	0.6
2018/7/13 12:00	0.5	0.6	0.3	0.6
2018/7/20 12:00	0.5	0.6	0.4	0.6
2018/7/27 12:00	0.5	0.6	0.4	0.6
2018/8/3 12:00	0.5	0.7	0.4	0.7
2018/8/10 12:00	0.5	0.7	0.4	0.7
2018/8/17 12:00	0.6	0.8	0.5	0.7
2018/8/24 12:00	0.6	0.8	0.5	0.8
2018/8/31 12:00	0.6	0.8	0.5	0.8
2018/9/7 12:00	0.6	0.9	0.5	0.8
2018/9/14 12:00	0.7	0.9	0.6	0.8
2018/9/21 12:00	0.7	0.9	0.6	0.8
2018/9/28 12:00	0.7	0.9	0.6	0.8
2018/10/5 12:00	0.7	1.0	0.6	0.8
2018/10/12 12:00	0.7	1.0	0.6	0.8
2018/10/19 12:00	0.7	1.0	0.6	0.8
2018/10/26 12:00	0.7	1.0	0.6	0.9
2018/11/2 12:00	0.7	1.0	0.6	0.9
2018/11/9 12:00	0.8	1.0	0.6	0.9
2018/11/16 12:00	0.8	1.0	0.6	0.9
2018/11/23 12:00	0.8	1.0	0.6	0.9
2018/11/30 12:00	0.8	1.0	0.7	0.9
2018/12/7 12:00	0.9	1.1	0.7	0.9
2018/12/14 12:00	0.9	1.1	0.7	0.9
2018/12/21 12:00	0.9	1.1	0.7	0.9
2018/12/28 12:00	0.9	1.1	0.7	0.9
2019/1/4 12:00	0.9	1.1	0.7	1.0
2019/1/11 12:00	0.9	1.1	0.7	1.0
2019/1/18 12:00	0.9	1.2	0.7	1.0
2019/1/25 12:00	0.9	1.2	0.7	1.0
2019/2/1 12:00	0.9	1.2	0.8	1.0
2019/2/8 12:00	1.0	1.2	0.8	1.1
2019/2/15 12:00	1.0	1.3	0.8	1.1
2019/2/22 12:00	1.0	1.3	0.8	1.1
2019/3/1 12:00	1.0	1.3	0.8	1.1
2019/3/8 12:00	1.0	1.3	0.8	1.1
2019/3/15 12:00	1.1	1.3	0.8	1.2
2019/3/22 12:00	1.1	1.3	0.8	1.1
2019/3/29 12:00	1.1	1.4	0.8	1.2
2019/4/5 12:00	1.1	1.4	0.8	1.2
2019/4/12 12:00	1.1	1.4	0.9	1.2
2019/4/19 12:00	1.1	1.4	0.9	1.2
2019/4/26 12:00	1.1	1.4	0.9	1.2
2019/5/3 12:00	1.1	1.4	0.9	1.2
2019/5/10 12:00	1.1	1.5	0.9	1.3
2019/5/17 12:00	1.1	1.5	0.9	1.3
2019/5/24 12:00	1.1	1.5	0.9	1.3
2019/5/31 12:00	1.2	1.5	0.9	1.3
2019/6/7 12:00	1.2	1.5	0.9	1.3
2019/6/14 12:00	1.2	1.6	0.9	1.4
2019/6/21 12:00	1.2	1.6	0.9	1.4
2019/6/28 12:00	1.2	1.6	0.9	1.4
2019/7/5 12:00	1.2	1.6	0.9	1.4
2019/7/12 12:00	1.2	1.6	0.9	1.4
2019/7/19 12:00	1.2	1.6	1.0	1.4
2019/7/26 12:00	1.2	1.6	1.0	1.4
2019/8/2 12:00	1.2	1.7	1.0	1.4
2019/8/9 12:00	1.2	1.7	1.0	1.4
2019/8/16 12:00	1.2	1.7	0.9	1.4
2019/8/23 12:00	1.3	1.7	1.0	1.5
2019/8/30 12:00	1.3	1.7	1.0	1.5
2019/9/6 12:00	1.3	1.7	1.0	1.5
2019/9/13 12:00	1.3	1.8	1.0	1.5
2019/9/20 12:00	1.3	1.8	1.0	1.5
2019/9/27 12:00	1.3	1.8	1.0	1.5
2019/10/4 12:00	1.3	1.8	1.0	1.5
2019/10/11 12:00	1.3	1.8	1.0	1.5
2019/10/18 12:00	1.3	1.8	1.0	1.5
2019/10/25 12:00	1.3	1.8	1.0	1.5
2019/11/1 12:00	1.3	1.8	1.0	1.5
2019/11/8 12:00	1.3	1.8	1.0	1.5
2019/11/15 12:00	1.3	1.8	1.0	1.5
2019/11/22 12:00	1.4	1.8	1.1	1.5
2019/11/29 12:00	1.4	1.8	1.0	1.5
2019/12/6 12:00	1.4	1.8	1.0	1.5
2019/12/13 12:00	1.4	1.8	1.0	1.5
2019/12/20 12:00	1.4	1.8	1.0	1.5
2019/12/27 12:00	1.4	1.8	1.0	1.5
2020/1/3 12:00	1.4	1.8	1.1	1.5
2020/1/10 12:00	1.4	1.8	1.1	1.5
2020/1/17 12:00	1.4	1.8	1.1	1.5
2020/1/24 12:00	1.4	1.9	1.1	1.5
2020/1/31 12:00	1.4	1.8	1.1	1.5
2020/2/7 12:00	1.5	1.9	1.1	1.6
2020/2/14 12:00	1.5	1.9	1.1	1.6
2020/2/21 12:00	1.5	1.9	1.1	1.6
2020/2/28 12:00	1.5	1.9	1.1	1.6
2020/3/6 12:00	1.5	1.9	1.1	1.6
2020/3/13 12:00	1.5	1.9	1.1	1.6
2020/3/20 12:00	1.5	1.9	1.1	1.6
2020/3/27 12:00	1.5	2.0	1.1	1.6
2020/4/3 12:00	1.5	2.0	1.2	1.7
2020/4/10 12:00	1.5	2.0	1.2	1.7
2020/4/17 12:00	1.5	2.0	1.2	1.7
2020/4/24 12:00	1.5	2.0	1.1	1.7
2020/5/1 12:00	1.5	2.0	1.1	1.7
2020/5/8 12:00	1.5	2.0	1.2	1.7
2020/5/15 12:00	1.5	2.0	1.2	1.7
2020/5/22 12:00	1.5	2.0	1.2	1.7
2020/5/29 12:00	1.5	2.1	1.2	1.7
2020/6/5 12:00	1.5	2.1	1.2	1.8
2020/6/12 12:00	1.6	2.1	1.2	1.8
2020/6/19 12:00	1.6	2.1	1.2	1.8
2020/6/26 12:00	1.6	2.1	1.2	1.8
2020/7/3 12:00	1.6	2.1	1.2	1.8
2020/7/10 12:00	1.6	2.1	1.2	1.8
2020/7/17 12:00	1.6	2.1	1.2	1.8
2020/7/24 12:00	1.6	2.1	1.2	1.8
2020/7/31 12:00	1.6	2.1	1.2	1.8
2020/8/7 12:00	1.6	2.1	1.2	1.8
2020/8/14 12:00	1.6	2.1	1.2	1.8
2020/8/21	-	-	-	-
2020/8/28	-	-	-	-
2020/9/4	-	-	-	-
2020/9/11	-	-	-	-
2020/9/18	-	-	-	-
2020/9/25 12:00	1.6	2.2	1.2	1.9
2021/1/11	2.1	2.7	-	1.6
2021/2/18	-	-	-	-
2021/2/19	-	-	-	-
2021/2/22	-	-	1.6	1.8
2021/2/25	-	-	-	-
2021/2/26	-	-	-	-
2021/8/17	2.2	2.5	1.4	2.0
2021/8/19	-	-	-	-
2021/8/29	-	-	-	-
2021/8/30	-	-	-	-

Table with columns for '地下水位' (Groundwater Level), '项目位置' (Project Location), and '测点名称' (Measurement Point Name). It lists various measurement points (e.g., 9.16, 9.26, 9.14, etc.) across multiple time periods from 2017 to 2021.