

# 目 次

|                         |       |    |
|-------------------------|-------|----|
| 1. 概況                   | ..... | 1  |
| 2. 観測状況一覧               | ..... | 2  |
| 3. 地下水位・沈下量・降水量グラフ（4丁目） | ..... | 3  |
| 地下水位・沈下量・降水量グラフ（6丁目）    | ..... | 4  |
| 地下水位・沈下量・降水量グラフ（7・12丁目） | ..... | 5  |
| 地下水位・沈下量・降水量グラフ（8丁目）    | ..... | 6  |
| 地下水位・沈下量・降水量グラフ（10丁目）   | ..... | 7  |
| 地下水位・沈下量・降水量グラフ（11丁目）   | ..... | 8  |
| 地下水位・沈下量・降水量グラフ（12丁目）   | ..... | 9  |
| 地下水位・降水量グラフ（対象範囲外）      | ..... | 10 |
| 4. 地下水位・沈下量データ（4丁目）     | ..... | 11 |
| 地下水位・沈下量データ（6丁目）        | ..... | 15 |
| 地下水位・沈下量データ（7・12丁目）     | ..... | 19 |
| 地下水位・沈下量データ（8丁目）        | ..... | 23 |
| 地下水位・沈下量データ（10丁目）       | ..... | 27 |
| 地下水位・沈下量データ（11丁目）       | ..... | 31 |
| 地下水位・沈下量データ（12丁目）       | ..... | 35 |
| 地下水位データ（対象範囲外）          | ..... | 40 |

[概況]

[測定日] 2018年8月10日

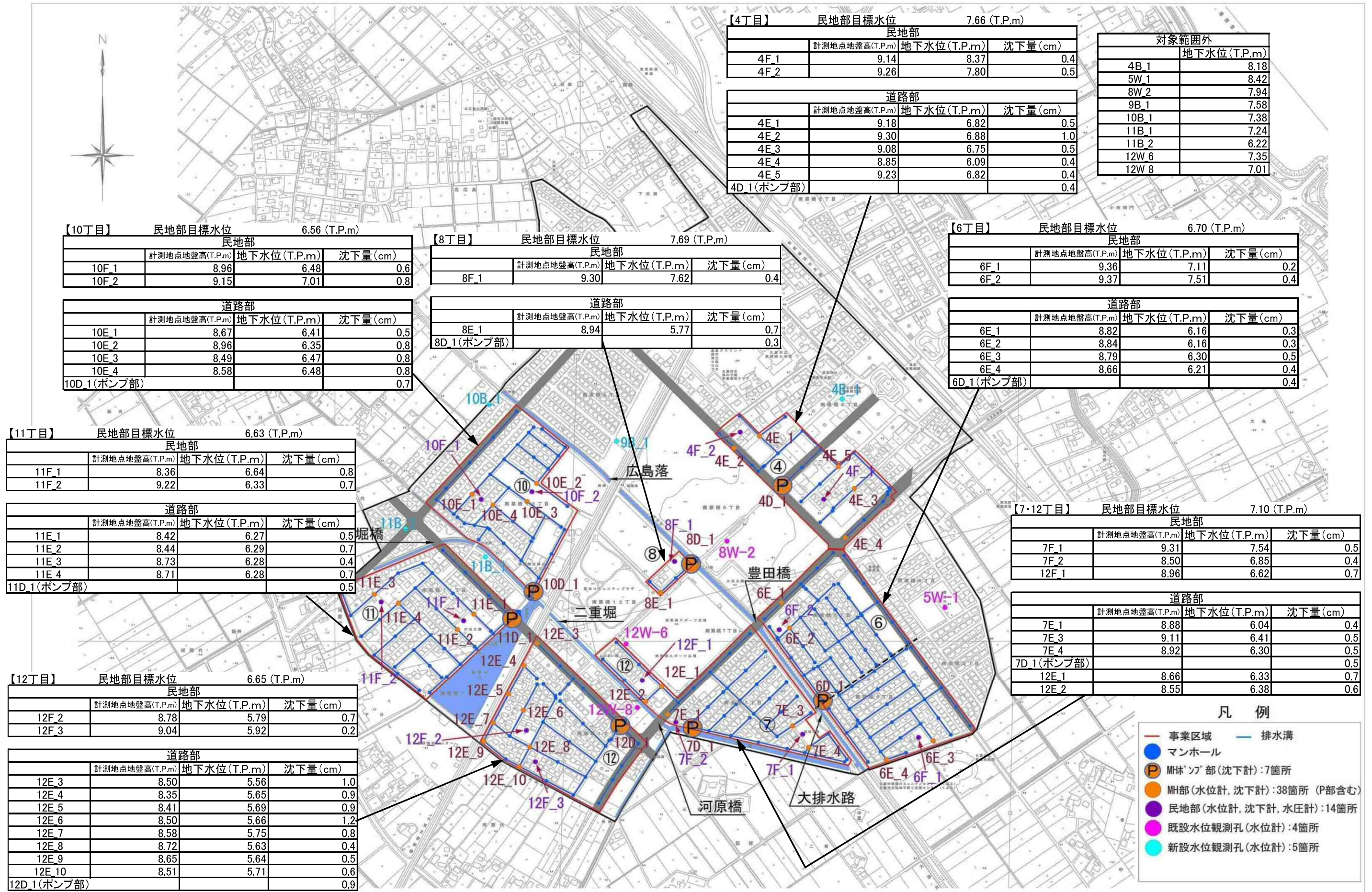
[概況]

現在、第3段階水位（最終水位）への水位低下を行っております。7/30に最終段階のポンプの水位設定変更を行い、道路部は第3段階水位以下まで低下させ、民地部の水位低下を行っている状態です。沈下に対しても第17回委員会において設定された一次管理値沈下量4cm以下の状態であり、現時点で問題はありません。

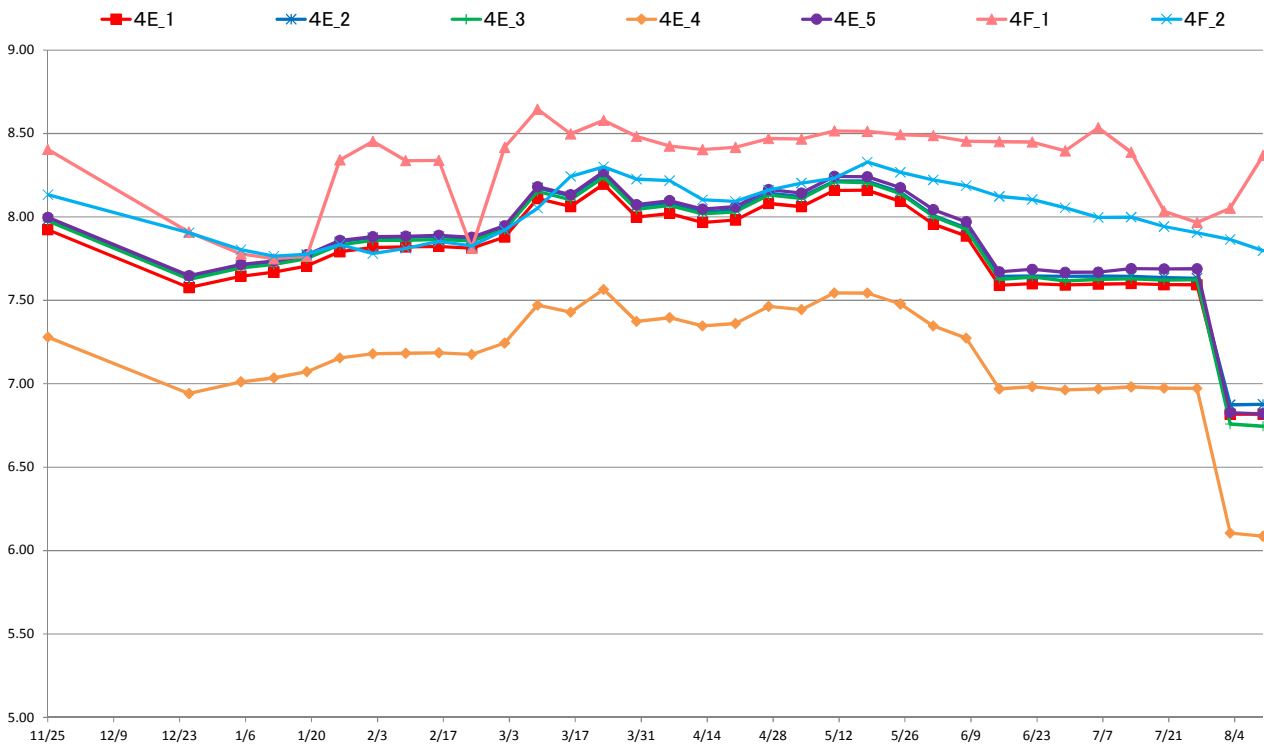
※地下水位の測定値はGL表示値とT.P.表示値があります（表示単位：m）。

- GLとはGround Level（地盤面）の略です。GL-1.00mは、地盤面から1m下がった高さを表します。
- T.P.とはTokyo Peil（東京湾平均海水面）の略です。東京湾の平均海水面を0mとした時の高さを表し、測量法にて定めている高さの基準になります。

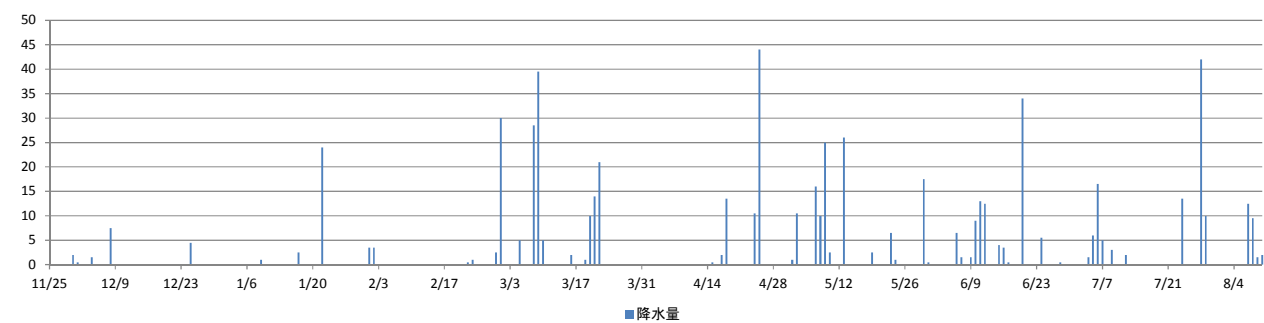
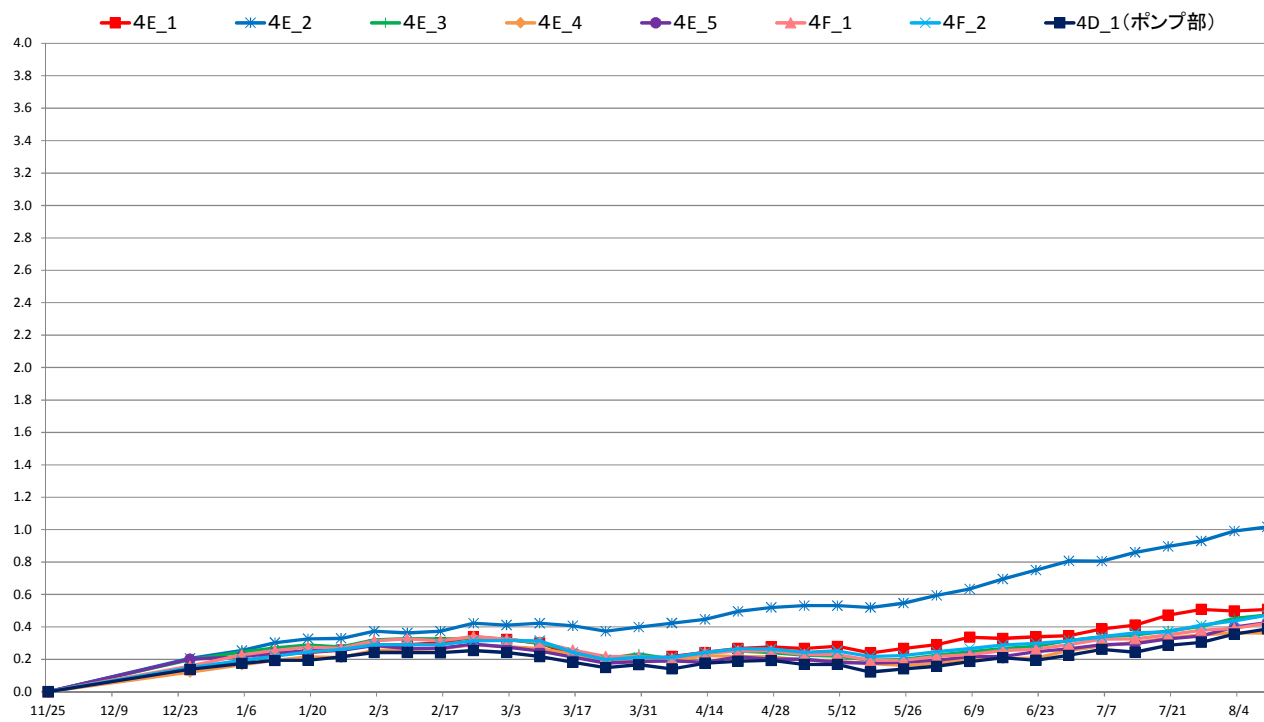
※降水量データは、気象庁（久喜）観測データを示す。



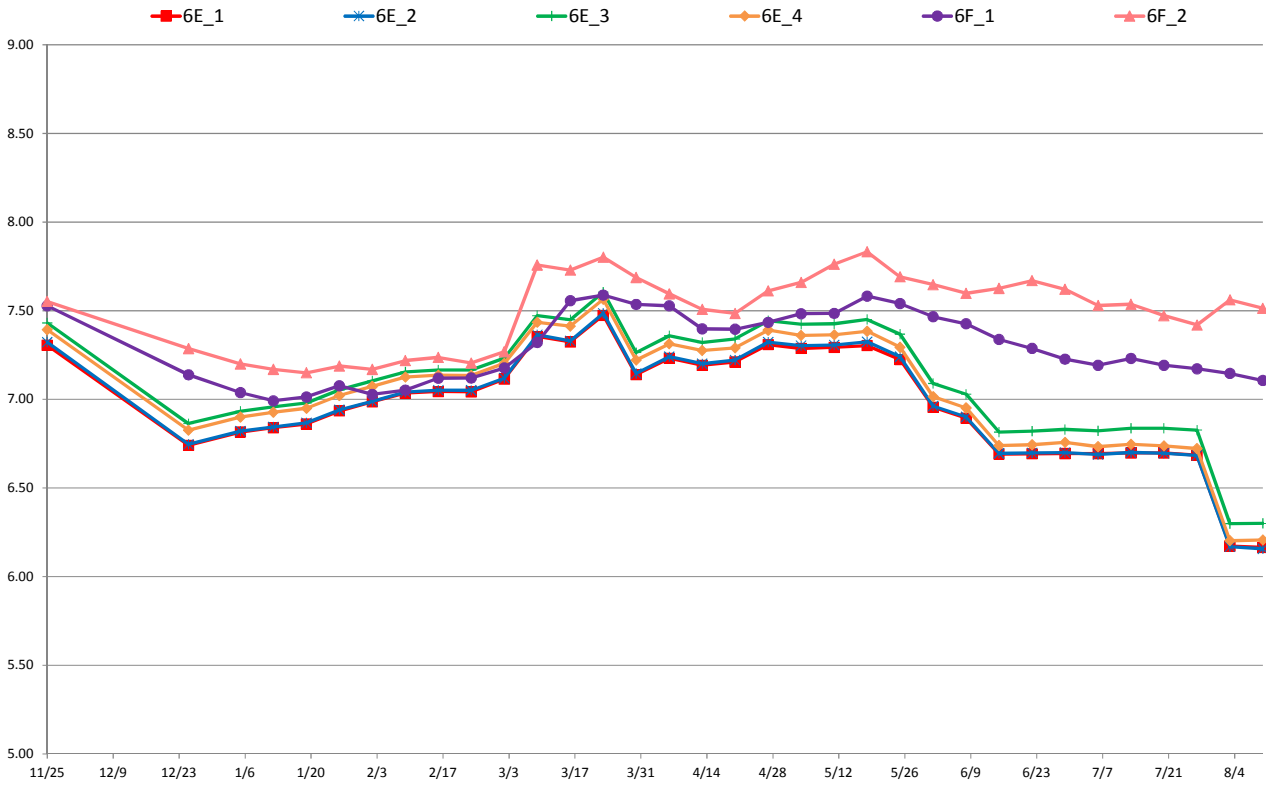
### 4丁目水位 (T.P+m)



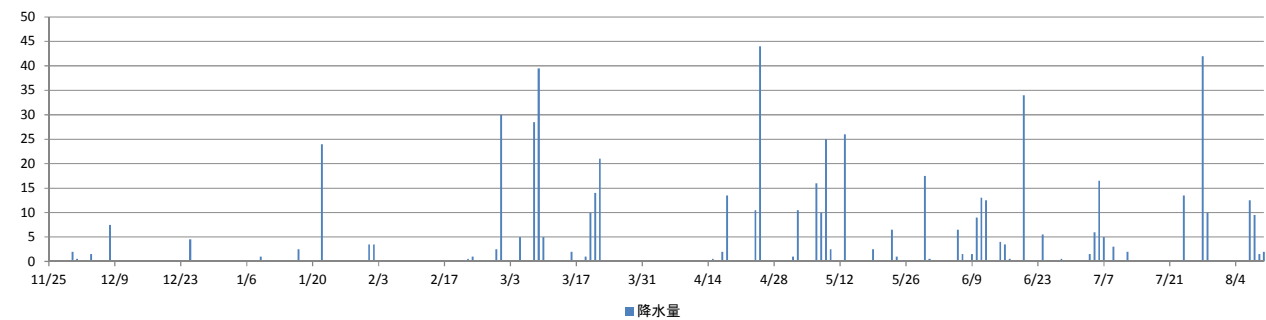
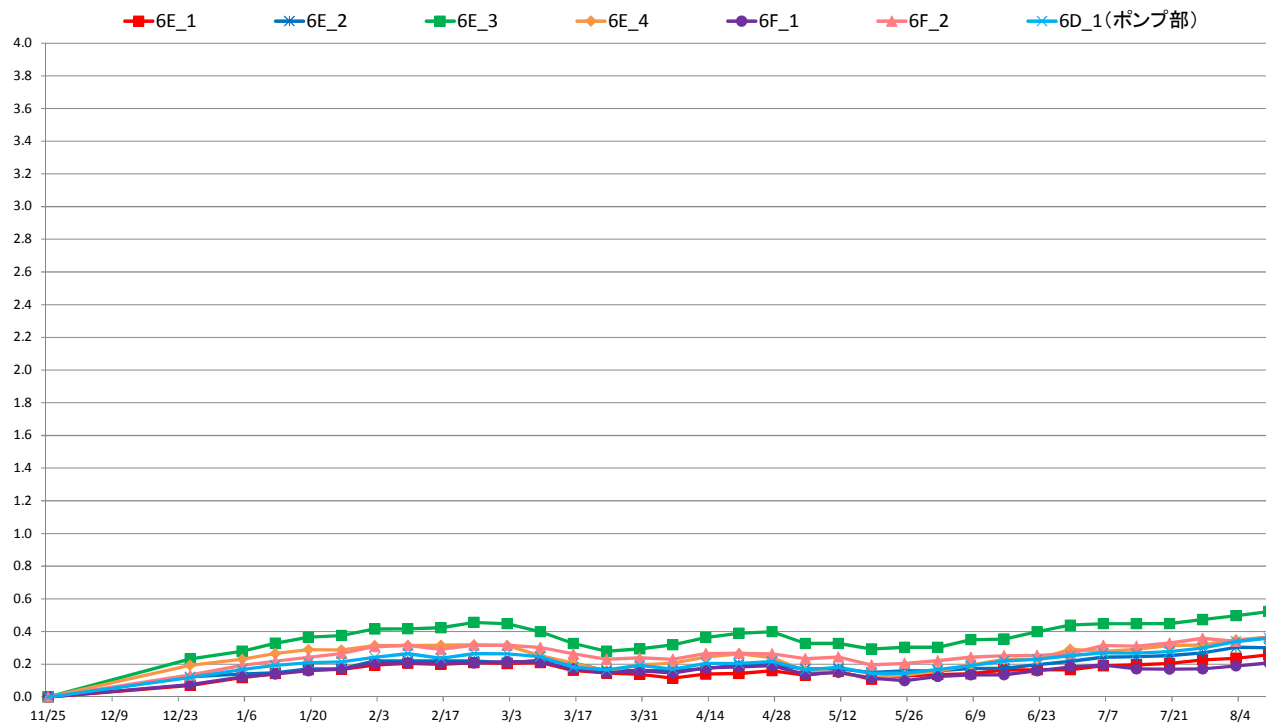
### 4丁目沈下 (G.L-cm)



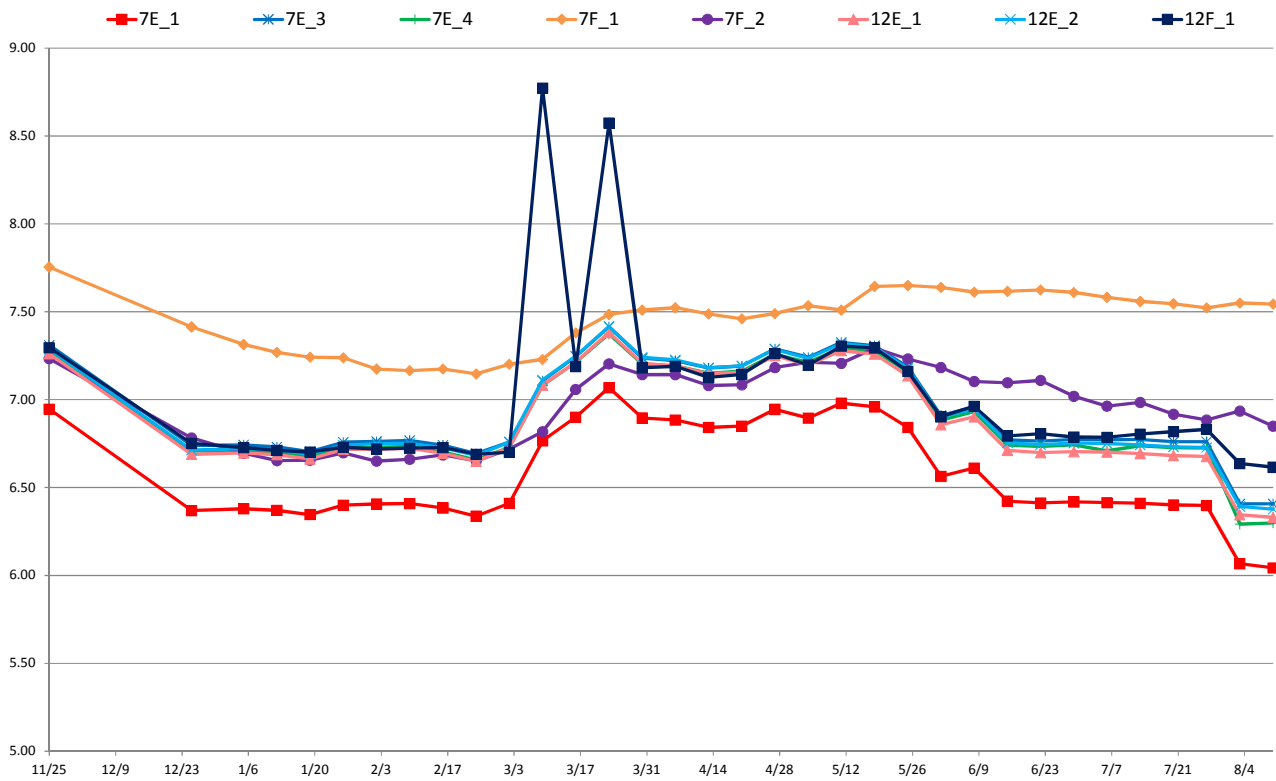
### 6丁目水位 (T.P+m)



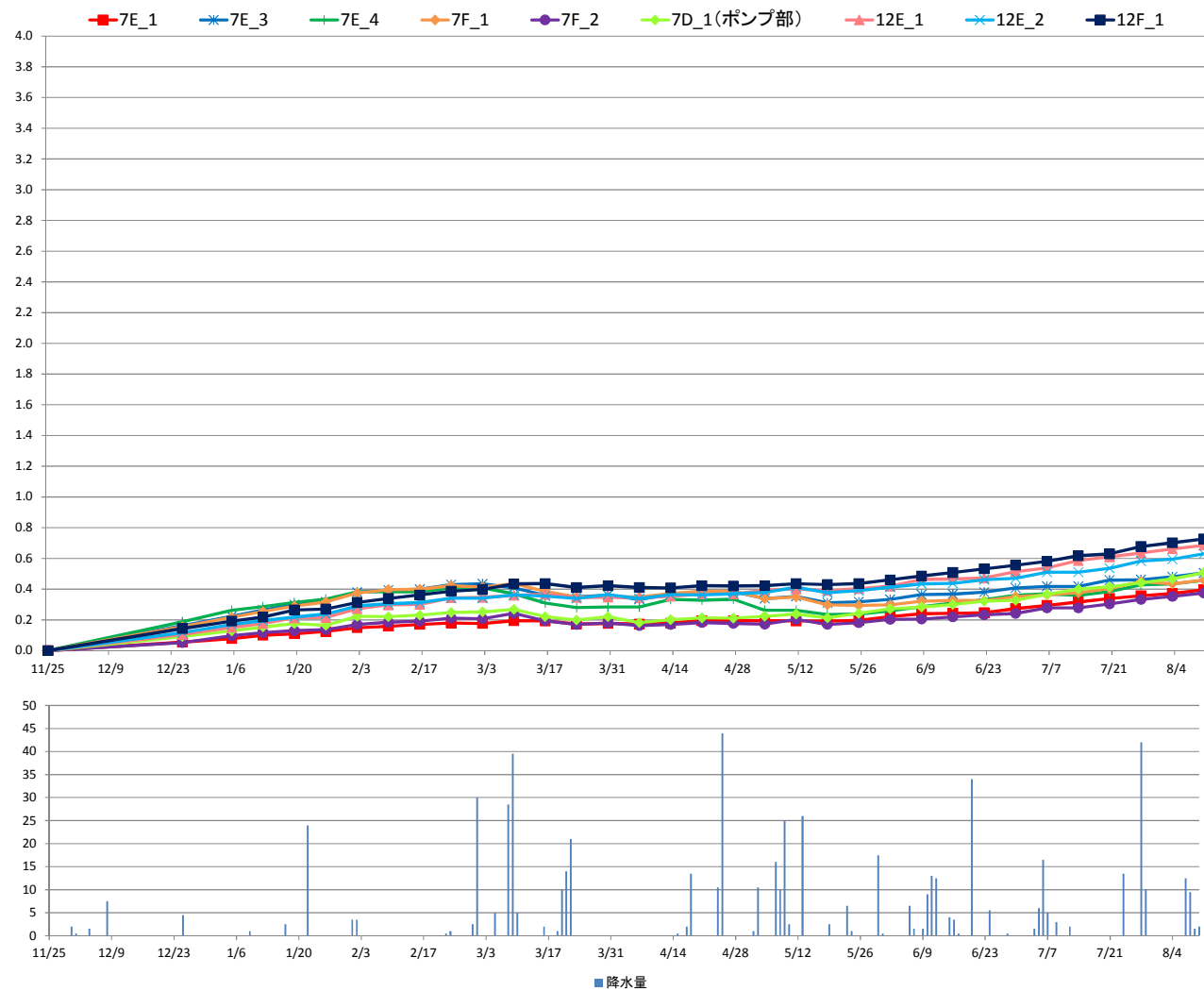
### 6丁目沈下 (G.L-cm)



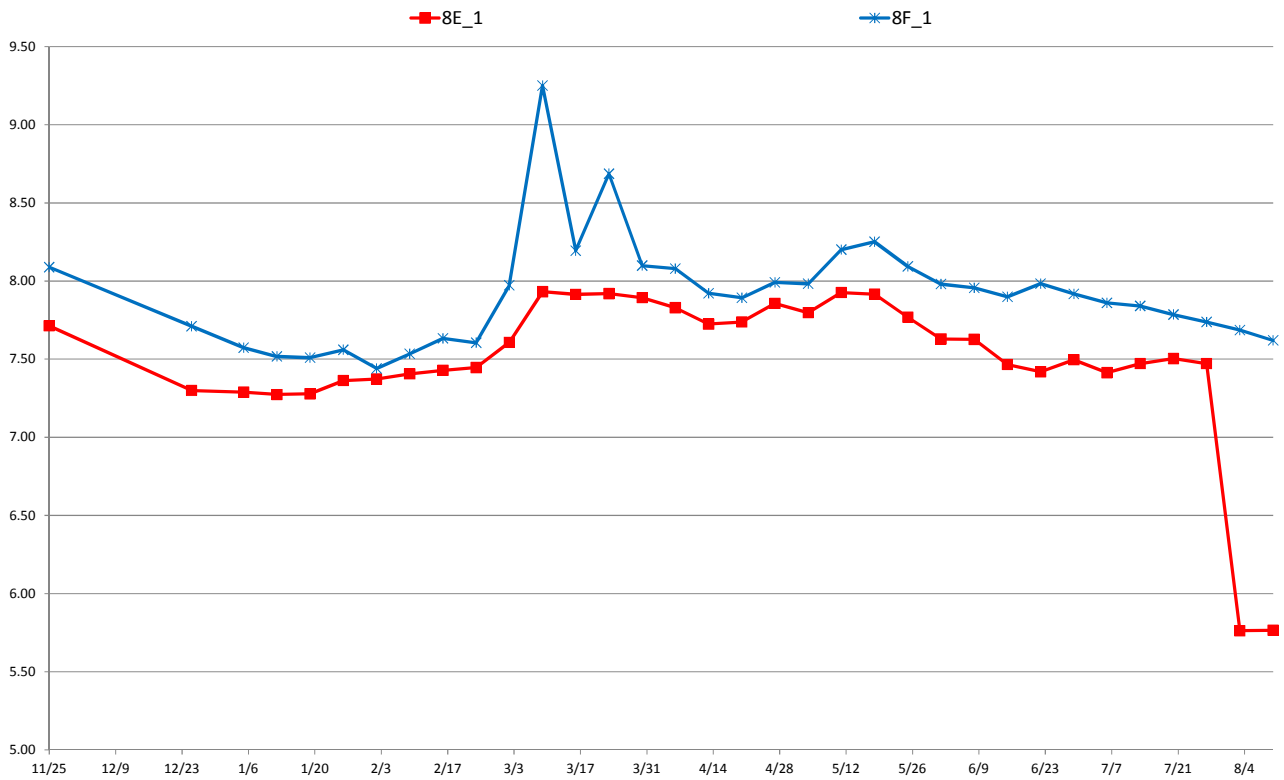
### 7・12丁目水位 (T.P+m)



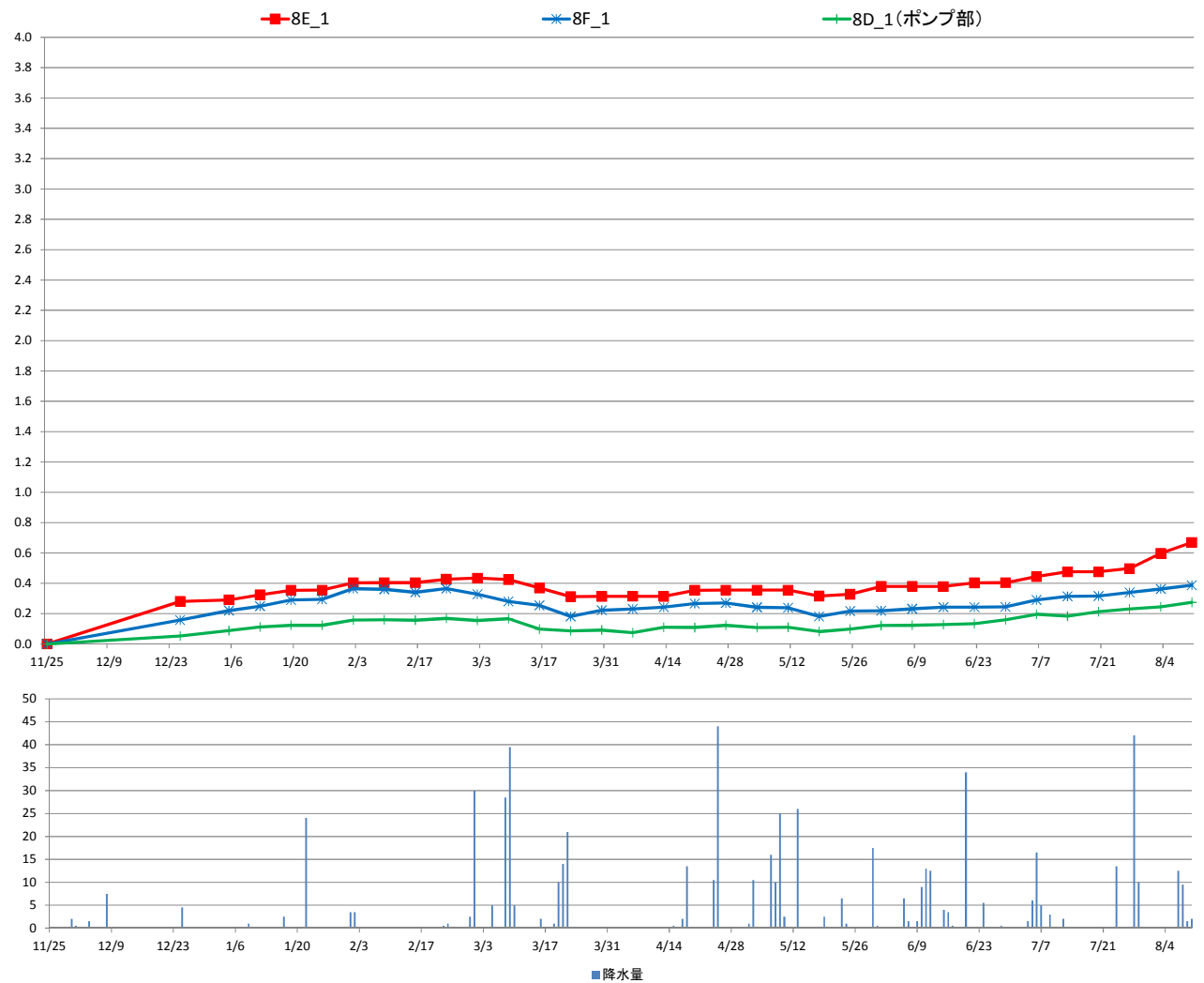
### 7・12丁目沈下 (G.L-cm)



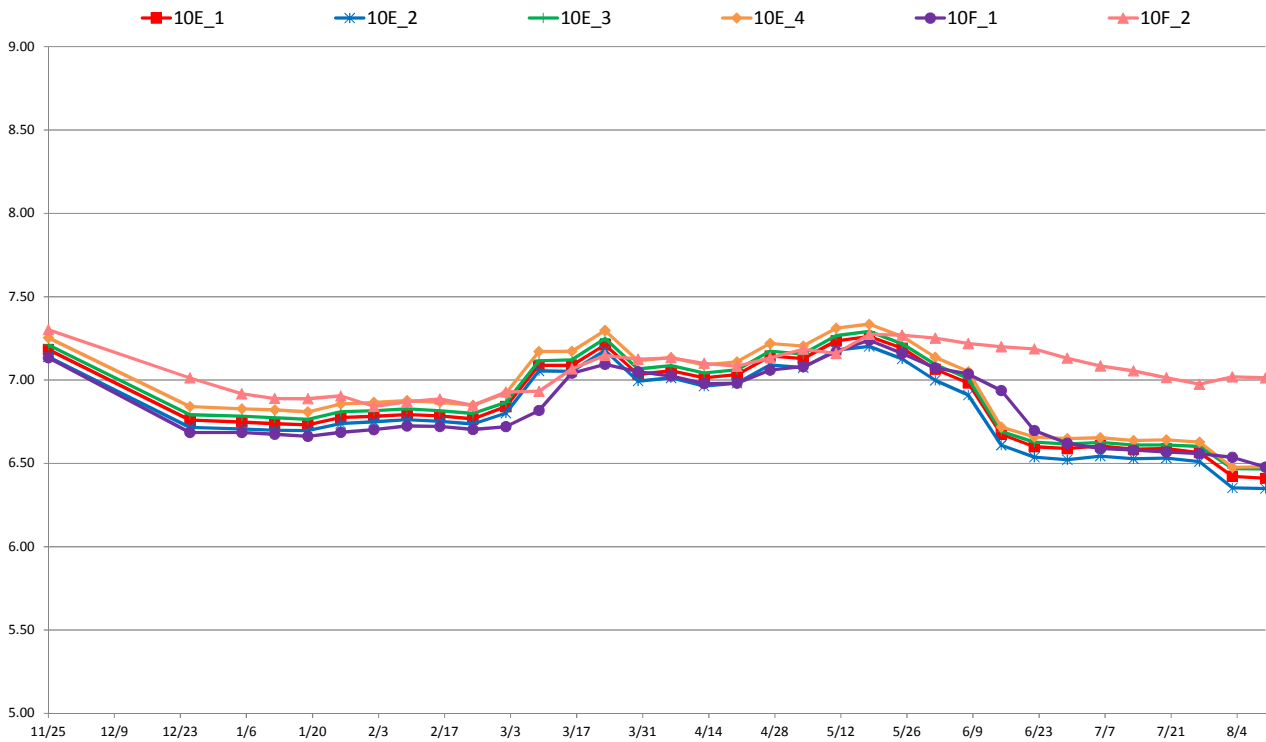
### 8丁目水位 (T.P+m)



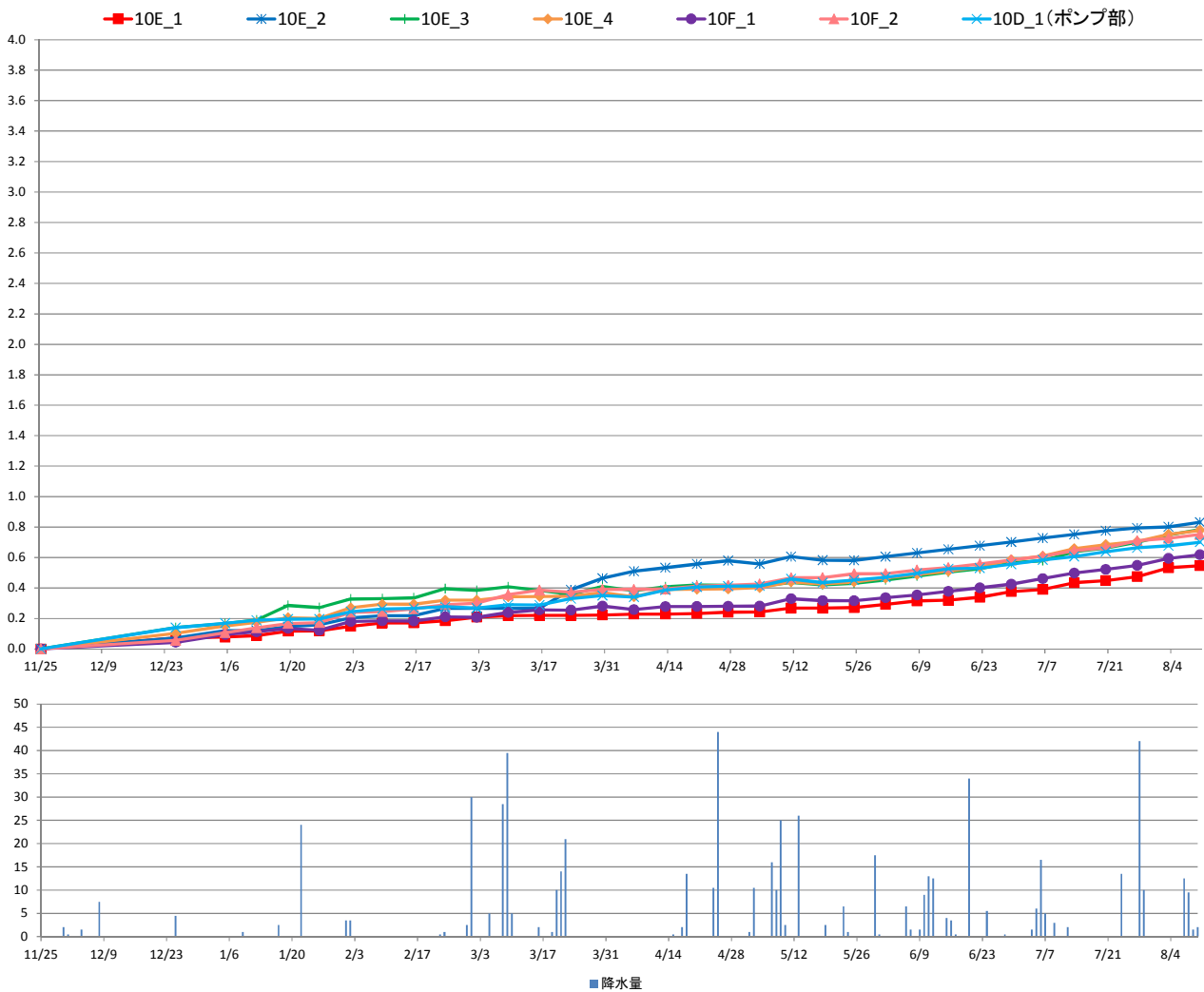
### 8丁目沈下 (G.L-cm)



### 10丁目水位 (T.P+m)



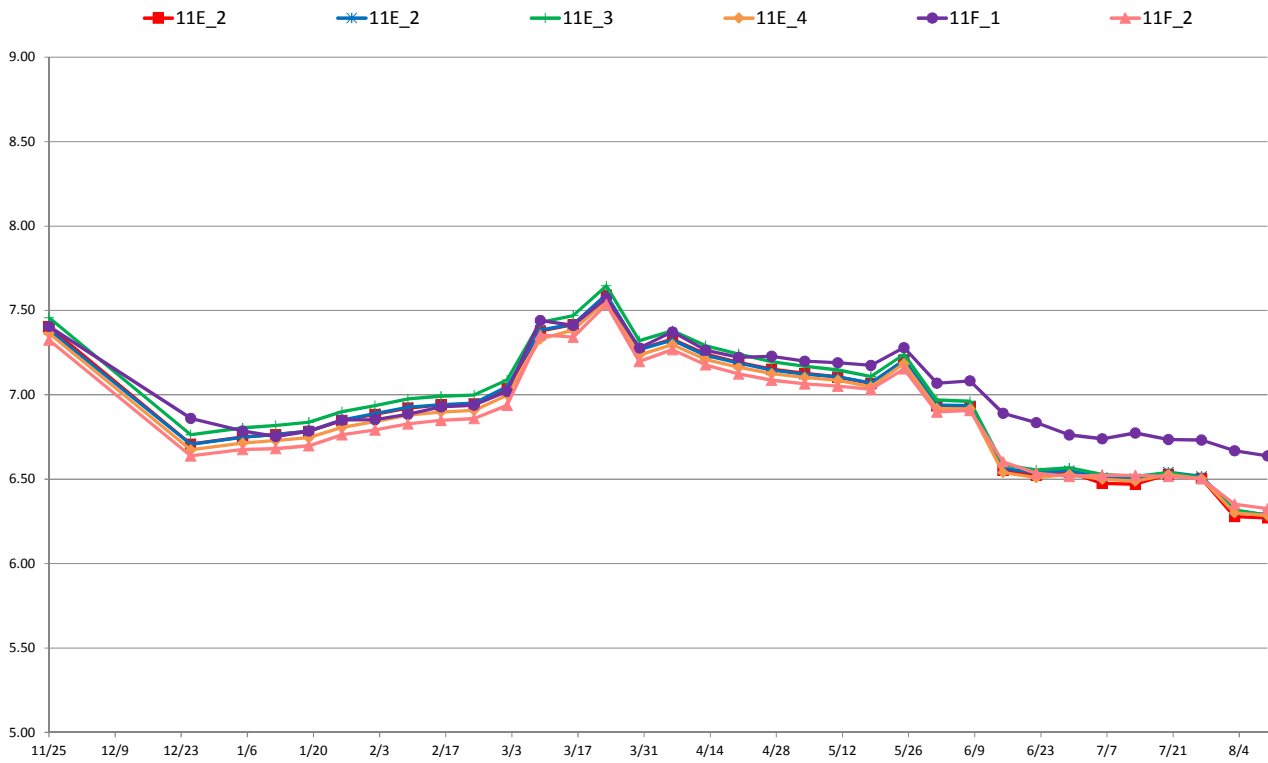
### 10丁目沈下 (G.L-cm)



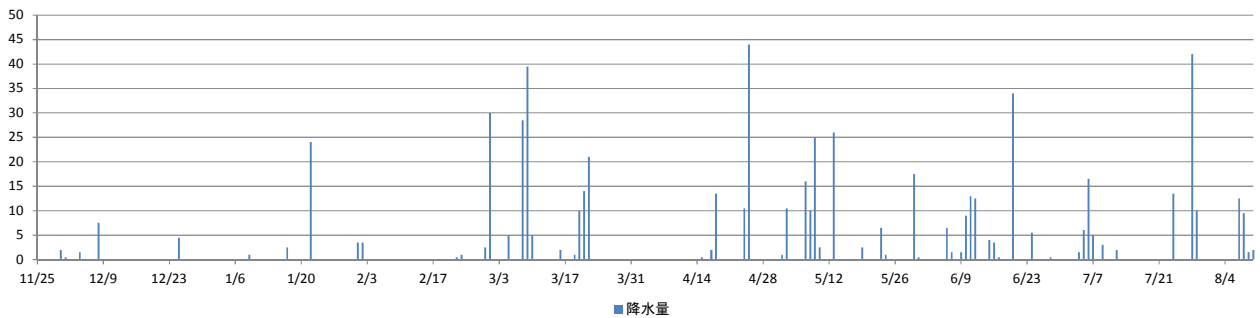
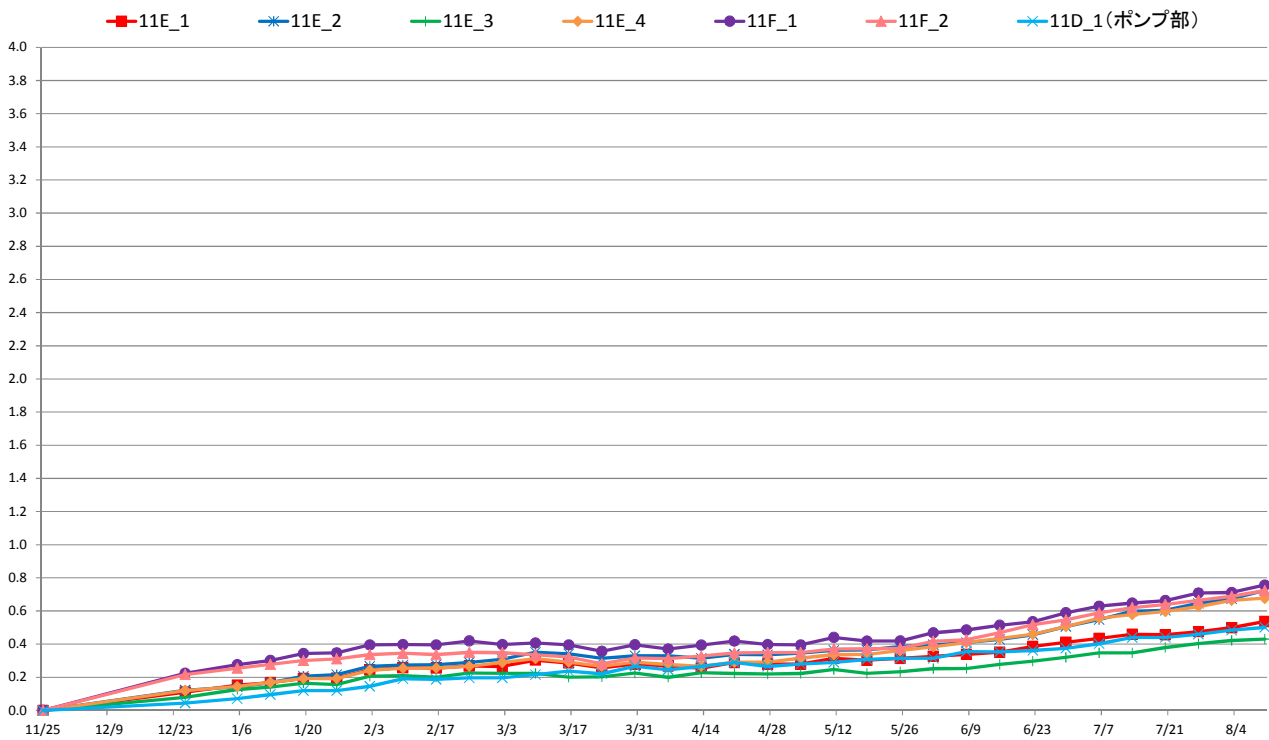
■降水量



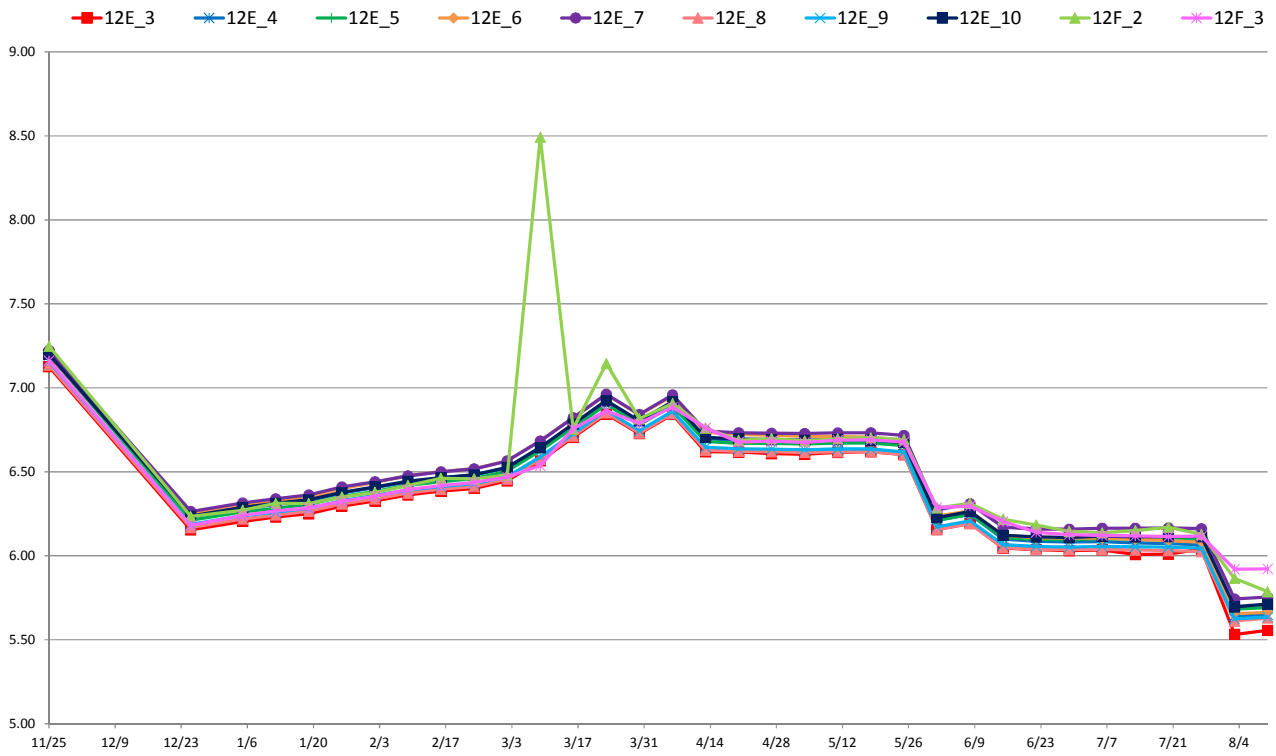
### 1 1 丁目水位 (T.P+m)



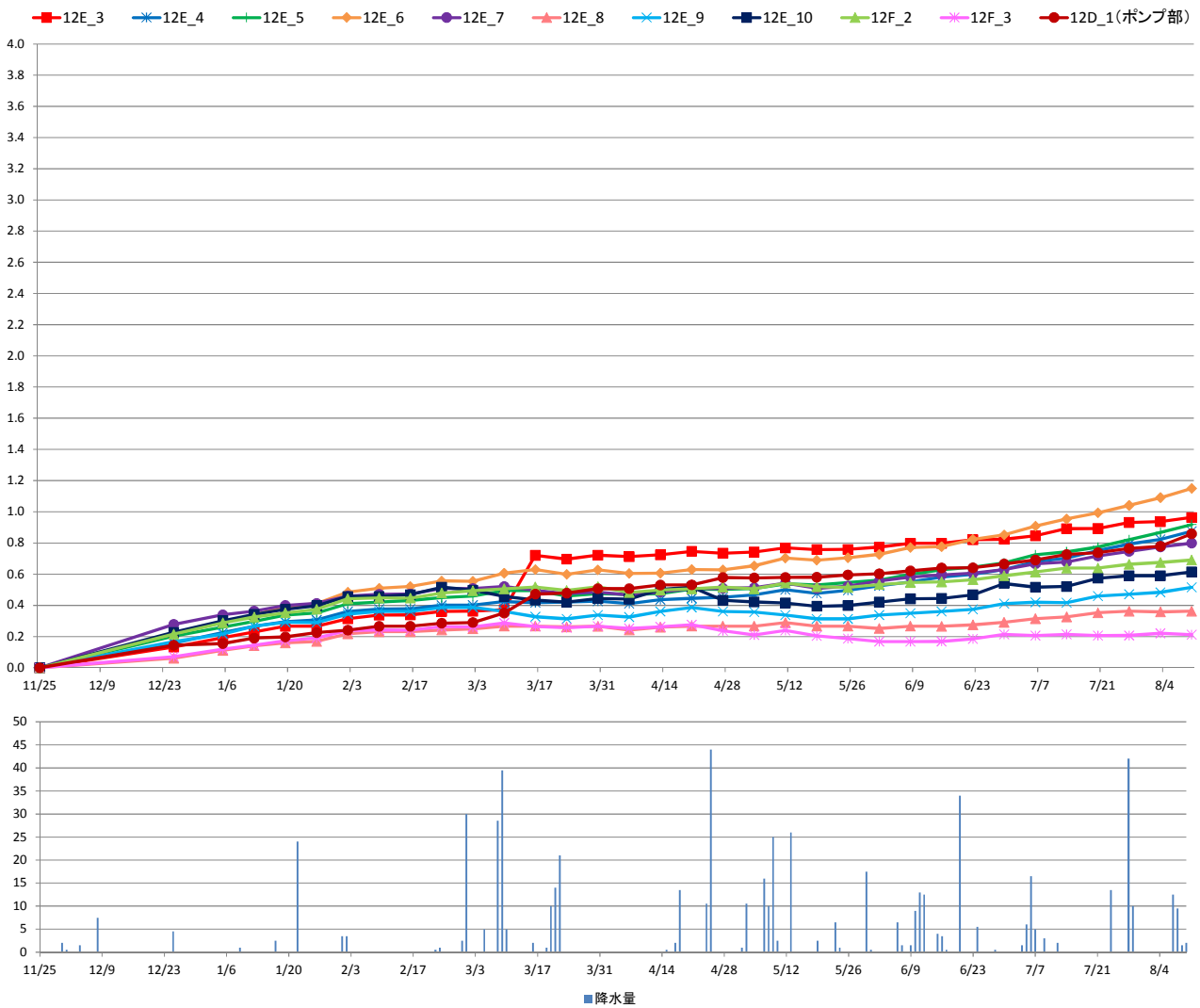
### 1 1 丁目沈下 (G.L-cm)



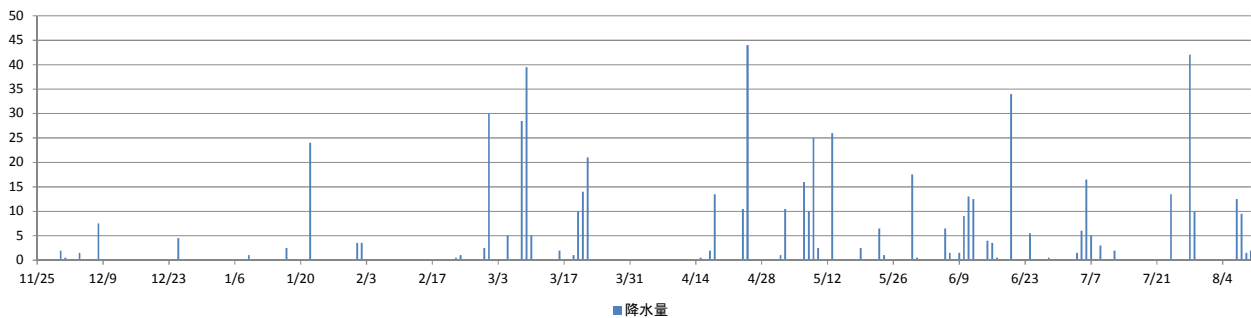
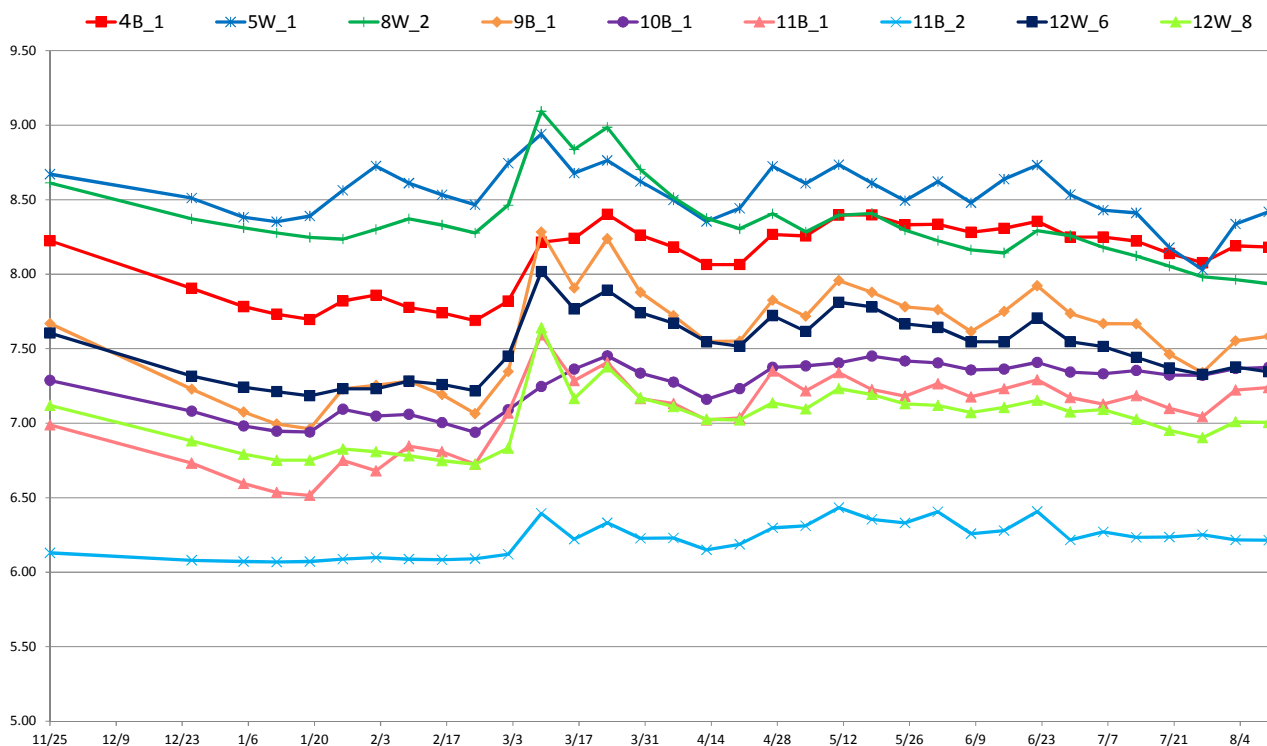
### 1 2丁目水位 (T.P+m)



### 1 2丁目沈下 (G.L-cm)



### 対策範囲外水位 (T,P+m)



[地下水位]

| 事業区域名                 | 4丁目(民地部)        |               |                 |               |
|-----------------------|-----------------|---------------|-----------------|---------------|
| 計測地点名                 | 4F_1            |               | 4F_2            |               |
| 計測地点地盤高<br>(T.P.m)    | 9.14            |               | 9.26            |               |
| 計測日                   | 地下水位<br>(T.P.m) | 地下水位<br>(GLm) | 地下水位<br>(T.P.m) | 地下水位<br>(GLm) |
| 2017/11/25 12:00      | 8.40            | -0.736        | 8.13            | -1.127        |
| 2017/12/25 12:00      | 7.91            | -1.231        | 7.90            | -1.356        |
| 2018/1/5 12:00        | 7.78            | -1.363        | 7.80            | -1.457        |
| 2018/1/12 12:00       | 7.75            | -1.391        | 7.76            | -1.495        |
| 2018/1/19 12:00       | 7.76            | -1.376        | 7.78            | -1.484        |
| 2018/1/26 12:00       | 8.34            | -0.797        | 7.84            | -1.425        |
| 2018/2/2 12:00        | 8.45            | -0.687        | 7.78            | -1.480        |
| 2018/2/9 12:00        | 8.34            | -0.803        | 7.81            | -1.449        |
| 2018/2/16 12:00       | 8.34            | -0.801        | 7.85            | -1.407        |
| 2018/2/23 12:00       | 7.81            | -1.329        | 7.83            | -1.433        |
| 2018/3/2 12:00        | 8.42            | -0.723        | 7.92            | -1.339        |
| 2018/3/9 12:00        | 8.65            | -0.495        | 8.05            | -1.208        |
| 2018/3/16 12:00       | 8.50            | -0.642        | 8.24            | -1.016        |
| 2018/3/23 12:00       | 8.58            | -0.562        | 8.30            | -0.960        |
| 2018/3/30 12:00       | 8.48            | -0.657        | 8.23            | -1.034        |
| 2018/4/6 12:00        | 8.42            | -0.716        | 8.22            | -1.042        |
| 2018/4/13 12:00       | 8.40            | -0.737        | 8.10            | -1.158        |
| 2018/4/20 12:00       | 8.42            | -0.723        | 8.09            | -1.166        |
| 2018/4/27 12:00       | 8.47            | -0.671        | 8.16            | -1.100        |
| 2018/5/4 12:00        | 8.47            | -0.673        | 8.20            | -1.058        |
| 2018/5/11 12:00       | 8.52            | -0.624        | 8.23            | -1.029        |
| 2018/5/18 12:00       | 8.51            | -0.627        | 8.33            | -0.932        |
| 2018/5/25 12:00       | 8.49            | -0.647        | 8.27            | -0.993        |
| 2018/6/1 12:00        | 8.49            | -0.654        | 8.22            | -1.038        |
| 2018/6/8 12:00        | 8.45            | -0.686        | 8.19            | -1.073        |
| 2018/6/15 12:00       | 8.45            | -0.689        | 8.12            | -1.138        |
| 2018/6/22 12:00       | 8.45            | -0.691        | 8.11            | -1.155        |
| 2018/6/29 12:00       | 8.40            | -0.744        | 8.05            | -1.205        |
| 2018/7/6 12:00        | 8.53            | -0.605        | 8.00            | -1.263        |
| 2018/7/13 12:00       | 8.39            | -0.752        | 8.00            | -1.262        |
| 2018/7/20 12:00       | 8.03            | -1.105        | 7.94            | -1.318        |
| 2018/7/27 12:00       | 7.97            | -1.174        | 7.91            | -1.354        |
| 2018/8/3 12:00        | 8.05            | -1.088        | 7.86            | -1.396        |
| 2018/8/10 12:00       | 8.37            | -0.773        | 7.80            | -1.462        |
| 1段階目水位<br>2018/2/24まで | 7.84            | -1.30         | 7.84            | -1.42         |
| 2段階目水位<br>2018/5/24まで | 7.75            | -1.39         | 7.75            | -1.51         |
| 最終水位<br>2018/8/24まで   | 7.66            | -1.48         | 7.66            | -1.60         |

[地下水位]

| 事業区域名<br>計測地点名     | 4丁目(道路部)        |               |                 |               |                 |               |                 |               |                 |               |
|--------------------|-----------------|---------------|-----------------|---------------|-----------------|---------------|-----------------|---------------|-----------------|---------------|
|                    | 4E_1            |               | 4E_2            |               | 4E_3            |               | 4E_4            |               | 4E_5            |               |
| 計測地点地盤高<br>(T.P.m) | 9.18            |               | 9.30            |               | 9.08            |               | 8.85            |               | 9.23            |               |
| 計測日                | 地下水位<br>(T.P.m) | 地下水位<br>(GLm) | 地下水位<br>(T.P.m) | 地下水位<br>(GLm) | 地下水位<br>(T.P.m) | 地下水位<br>(GLm) | 地下水位<br>(T.P.m) | 地下水位<br>(GLm) | 地下水位<br>(T.P.m) | 地下水位<br>(GLm) |
| 2017/11/25 12:00   | 7.92            | -1.257        | 7.98            | -1.316        | 7.98            | -1.104        | 7.28            | -1.571        | 8.00            | -1.232        |
| 2017/12/25 12:00   | 7.58            | -1.604        | 7.64            | -1.660        | 7.63            | -1.455        | 6.94            | -1.909        | 7.65            | -1.582        |
| 2018/1/5 12:00     | 7.64            | -1.535        | 7.71            | -1.591        | 7.69            | -1.386        | 7.01            | -1.839        | 7.72            | -1.515        |
| 2018/1/12 12:00    | 7.67            | -1.511        | 7.73            | -1.571        | 7.71            | -1.366        | 7.03            | -1.816        | 7.74            | -1.493        |
| 2018/1/19 12:00    | 7.71            | -1.474        | 7.77            | -1.532        | 7.75            | -1.329        | 7.07            | -1.779        | 7.77            | -1.457        |
| 2018/1/26 12:00    | 7.79            | -1.388        | 7.85            | -1.449        | 7.83            | -1.247        | 7.15            | -1.695        | 7.86            | -1.371        |
| 2018/2/2 12:00     | 7.82            | -1.364        | 7.88            | -1.424        | 7.86            | -1.221        | 7.18            | -1.670        | 7.88            | -1.348        |
| 2018/2/9 12:00     | 7.82            | -1.360        | 7.88            | -1.421        | 7.86            | -1.220        | 7.18            | -1.667        | 7.88            | -1.346        |
| 2018/2/16 12:00    | 7.82            | -1.356        | 7.88            | -1.417        | 7.86            | -1.215        | 7.19            | -1.664        | 7.89            | -1.341        |
| 2018/2/23 12:00    | 7.81            | -1.367        | 7.87            | -1.428        | 7.85            | -1.225        | 7.18            | -1.674        | 7.88            | -1.352        |
| 2018/3/2 12:00     | 7.88            | -1.301        | 7.94            | -1.359        | 7.92            | -1.158        | 7.24            | -1.606        | 7.95            | -1.283        |
| 2018/3/9 12:00     | 8.11            | -1.070        | 8.17            | -1.125        | 8.15            | -0.928        | 7.47            | -1.378        | 8.18            | -1.049        |
| 2018/4/20 12:00    | 7.98            | -1.199        | 8.04            | -1.258        | 8.03            | -1.050        | 7.36            | -1.489        | 8.06            | -1.169        |
| 2018/4/27 12:00    | 8.08            | -1.099        | 8.14            | -1.158        | 8.13            | -0.949        | 7.46            | -1.387        | 8.16            | -1.066        |
| 2018/5/4 12:00     | 8.06            | -1.118        | 8.12            | -1.179        | 8.11            | -0.969        | 7.44            | -1.406        | 8.14            | -1.087        |
| 2018/5/11 12:00    | 8.16            | -1.022        | 8.21            | -1.085        | 8.21            | -0.870        | 7.54            | -1.305        | 8.24            | -0.987        |
| 2018/5/18 12:00    | 8.16            | -1.021        | 8.21            | -1.085        | 8.21            | -0.875        | 7.54            | -1.306        | 8.24            | -0.989        |
| 2018/5/25 12:00    | 8.09            | -1.087        | 8.15            | -1.152        | 8.14            | -0.941        | 7.48            | -1.372        | 8.18            | -1.055        |
| 2018/6/1 12:00     | 7.96            | -1.223        | 8.01            | -1.290        | 8.00            | -1.077        | 7.35            | -1.504        | 8.04            | -1.186        |
| 2018/6/8 12:00     | 7.88            | -1.295        | 7.93            | -1.366        | 7.93            | -1.154        | 7.27            | -1.576        | 7.97            | -1.259        |
| 2018/6/15 12:00    | 7.59            | -1.591        | 7.64            | -1.657        | 7.63            | -1.454        | 6.97            | -1.880        | 7.67            | -1.559        |
| 2018/6/22 12:00    | 7.60            | -1.581        | 7.65            | -1.654        | 7.64            | -1.440        | 6.98            | -1.868        | 7.69            | -1.544        |
| 2018/6/29 12:00    | 7.59            | -1.588        | 7.64            | -1.657        | 7.62            | -1.463        | 6.96            | -1.887        | 7.67            | -1.562        |
| 2018/7/6 12:00     | 7.60            | -1.583        | 7.64            | -1.656        | 7.63            | -1.455        | 6.97            | -1.880        | 7.67            | -1.561        |
| 2018/7/13 12:00    | 7.60            | -1.580        | 7.64            | -1.657        | 7.63            | -1.451        | 6.98            | -1.869        | 7.69            | -1.540        |
| 2018/7/20 12:00    | 7.59            | -1.586        | 7.63            | -1.665        | 7.62            | -1.460        | 6.97            | -1.877        | 7.69            | -1.542        |
| 2018/7/27 12:00    | 7.59            | -1.587        | 7.63            | -1.667        | 7.62            | -1.458        | 6.97            | -1.877        | 7.69            | -1.541        |
| 2018/8/3 12:00     | 6.82            | -2.362        | 6.87            | -2.426        | 6.76            | -2.321        | 6.10            | -2.745        | 6.83            | -2.403        |
| 2018/8/10 12:00    | 6.82            | -2.362        | 6.88            | -2.423        | 6.75            | -2.335        | 6.09            | -2.764        | 6.82            | -2.410        |

[沈下量]

| 事業区域名<br>計測地点名   | 4丁目(民地部)    |             |
|------------------|-------------|-------------|
|                  | 4F_1        | 4F_2        |
| 計測日              | 沈下量<br>(cm) | 沈下量<br>(cm) |
| 2017/11/25 12:00 | 0.0         | 0.0         |
| 2017/12/25 12:00 | 0.2         | 0.1         |
| 2018/1/5 12:00   | 0.2         | 0.2         |
| 2018/1/12 12:00  | 0.3         | 0.2         |
| 2018/1/19 12:00  | 0.3         | 0.2         |
| 2018/1/26 12:00  | 0.3         | 0.3         |
| 2018/2/2 12:00   | 0.3         | 0.3         |
| 2018/2/9 12:00   | 0.3         | 0.3         |
| 2018/2/16 12:00  | 0.3         | 0.3         |
| 2018/2/23 12:00  | 0.3         | 0.3         |
| 2018/3/2 12:00   | 0.3         | 0.3         |
| 2018/3/9 12:00   | 0.3         | 0.3         |
| 2018/3/16 12:00  | 0.3         | 0.2         |
| 2018/3/23 12:00  | 0.2         | 0.2         |
| 2018/3/30 12:00  | 0.2         | 0.2         |
| 2018/4/6 12:00   | 0.2         | 0.2         |
| 2018/4/13 12:00  | 0.2         | 0.2         |
| 2018/4/20 12:00  | 0.3         | 0.3         |
| 2018/4/27 12:00  | 0.3         | 0.3         |
| 2018/5/4 12:00   | 0.2         | 0.2         |
| 2018/5/11 12:00  | 0.2         | 0.3         |
| 2018/5/18 12:00  | 0.2         | 0.2         |
| 2018/5/25 12:00  | 0.2         | 0.2         |
| 2018/6/1 12:00   | 0.2         | 0.2         |
| 2018/6/8 12:00   | 0.2         | 0.3         |
| 2018/6/15 12:00  | 0.3         | 0.3         |
| 2018/6/22 12:00  | 0.3         | 0.3         |
| 2018/6/29 12:00  | 0.3         | 0.3         |
| 2018/7/6 12:00   | 0.3         | 0.3         |
| 2018/7/13 12:00  | 0.3         | 0.4         |
| 2018/7/20 12:00  | 0.4         | 0.4         |
| 2018/7/27 12:00  | 0.4         | 0.4         |
| 2018/8/3 12:00   | 0.4         | 0.4         |
| 2018/8/10 12:00  | 0.4         | 0.5         |

[沈下量]

| 事業区域名<br>計測地点名   | 4丁目(道路部)    |             |             |             |             |             |
|------------------|-------------|-------------|-------------|-------------|-------------|-------------|
|                  | 4E_1        | 4E_2        | 4E_3        | 4E_4        | 4E_5        | 4D_1(ポンプ部)  |
| 計測日              | 沈下量<br>(cm) | 沈下量<br>(cm) | 沈下量<br>(cm) | 沈下量<br>(cm) | 沈下量<br>(cm) | 沈下量<br>(cm) |
| 2017/11/25 12:00 | 0.0         | 0.0         | 0.0         | 0.0         | 0.0         | 0.0         |
| 2017/12/25 12:00 | 0.1         | 0.2         | 0.2         | 0.1         | 0.2         | 0.1         |
| 2018/1/5 12:00   | 0.2         | 0.3         | 0.2         | 0.2         | 0.2         | 0.2         |
| 2018/1/12 12:00  | 0.2         | 0.3         | 0.3         | 0.2         | 0.2         | 0.2         |
| 2018/1/19 12:00  | 0.2         | 0.3         | 0.3         | 0.2         | 0.3         | 0.2         |
| 2018/1/26 12:00  | 0.3         | 0.3         | 0.3         | 0.2         | 0.3         | 0.2         |
| 2018/2/2 12:00   | 0.3         | 0.4         | 0.3         | 0.3         | 0.3         | 0.2         |
| 2018/2/9 12:00   | 0.3         | 0.4         | 0.3         | 0.3         | 0.3         | 0.2         |
| 2018/2/16 12:00  | 0.3         | 0.4         | 0.3         | 0.3         | 0.3         | 0.2         |
| 2018/2/23 12:00  | 0.3         | 0.4         | 0.3         | 0.3         | 0.3         | 0.3         |
| 2018/3/2 12:00   | 0.3         | 0.4         | 0.3         | 0.3         | 0.3         | 0.2         |
| 2018/3/9 12:00   | 0.3         | 0.4         | 0.3         | 0.3         | 0.3         | 0.2         |
| 2018/3/16 12:00  | 0.2         | 0.4         | 0.3         | 0.2         | 0.2         | 0.2         |
| 2018/3/23 12:00  | 0.2         | 0.4         | 0.2         | 0.2         | 0.2         | 0.1         |
| 2018/3/30 12:00  | 0.2         | 0.4         | 0.2         | 0.2         | 0.2         | 0.2         |
| 2018/4/6 12:00   | 0.2         | 0.4         | 0.2         | 0.2         | 0.2         | 0.1         |
| 2018/4/13 12:00  | 0.2         | 0.4         | 0.2         | 0.2         | 0.2         | 0.2         |
| 2018/4/20 12:00  | 0.3         | 0.5         | 0.3         | 0.2         | 0.2         | 0.2         |
| 2018/4/27 12:00  | 0.3         | 0.5         | 0.2         | 0.2         | 0.2         | 0.2         |
| 2018/5/4 12:00   | 0.3         | 0.5         | 0.2         | 0.2         | 0.2         | 0.2         |
| 2018/5/11 12:00  | 0.3         | 0.5         | 0.2         | 0.2         | 0.2         | 0.2         |
| 2018/5/18 12:00  | 0.2         | 0.5         | 0.2         | 0.2         | 0.2         | 0.1         |
| 2018/5/25 12:00  | 0.3         | 0.5         | 0.2         | 0.2         | 0.2         | 0.1         |
| 2018/6/1 12:00   | 0.3         | 0.6         | 0.2         | 0.2         | 0.2         | 0.2         |
| 2018/6/8 12:00   | 0.3         | 0.6         | 0.2         | 0.2         | 0.2         | 0.2         |
| 2018/6/15 12:00  | 0.3         | 0.7         | 0.3         | 0.2         | 0.2         | 0.2         |
| 2018/6/22 12:00  | 0.3         | 0.7         | 0.3         | 0.2         | 0.2         | 0.2         |
| 2018/6/29 12:00  | 0.3         | 0.8         | 0.3         | 0.3         | 0.3         | 0.2         |
| 2018/7/6 12:00   | 0.4         | 0.8         | 0.3         | 0.3         | 0.3         | 0.3         |
| 2018/7/13 12:00  | 0.4         | 0.9         | 0.3         | 0.3         | 0.3         | 0.2         |
| 2018/7/20 12:00  | 0.5         | 0.9         | 0.4         | 0.3         | 0.3         | 0.3         |
| 2018/7/27 12:00  | 0.5         | 0.9         | 0.4         | 0.4         | 0.3         | 0.3         |
| 2018/8/3 12:00   | 0.5         | 1.0         | 0.5         | 0.4         | 0.4         | 0.4         |
| 2018/8/10 12:00  | 0.5         | 1.0         | 0.5         | 0.4         | 0.4         | 0.4         |

[地下水位]

| 事業区域名                 | 6丁目(民地部)        |               |                 |               |
|-----------------------|-----------------|---------------|-----------------|---------------|
| 計測地点名                 | 6F_1            |               | 6F_2            |               |
| 計測地点地盤高<br>(T.P.m)    | 9.36            |               | 9.37            |               |
| 計測日                   | 地下水位<br>(T.P.m) | 地下水位<br>(GLm) | 地下水位<br>(T.P.m) | 地下水位<br>(GLm) |
| 2017/11/25 12:00      | 7.53            | -1.832        | 7.55            | -1.818        |
| 2017/12/25 12:00      | 7.14            | -2.221        | 7.29            | -2.083        |
| 2018/1/5 12:00        | 7.04            | -2.322        | 7.20            | -2.170        |
| 2018/1/12 12:00       | 6.99            | -2.368        | 7.17            | -2.201        |
| 2018/1/19 12:00       | 7.01            | -2.347        | 7.15            | -2.220        |
| 2018/1/26 12:00       | 7.08            | -2.283        | 7.19            | -2.182        |
| 2018/2/2 12:00        | 7.03            | -2.332        | 7.17            | -2.201        |
| 2018/2/9 12:00        | 7.05            | -2.308        | 7.22            | -2.151        |
| 2018/2/16 12:00       | 7.12            | -2.240        | 7.24            | -2.133        |
| 2018/2/23 12:00       | 7.12            | -2.239        | 7.20            | -2.165        |
| 2018/3/2 12:00        | 7.18            | -2.183        | 7.27            | -2.101        |
| 2018/3/9 12:00        | 7.32            | -2.038        | 7.76            | -1.612        |
| 2018/3/16 12:00       | 7.56            | -1.804        | 7.73            | -1.640        |
| 2018/3/23 12:00       | 7.59            | -1.771        | 7.80            | -1.568        |
| 2018/3/30 12:00       | 7.54            | -1.824        | 7.69            | -1.682        |
| 2018/4/6 12:00        | 7.53            | -1.832        | 7.60            | -1.775        |
| 2018/4/13 12:00       | 7.40            | -1.963        | 7.51            | -1.862        |
| 2018/4/20 12:00       | 7.40            | -1.964        | 7.49            | -1.885        |
| 2018/4/27 12:00       | 7.43            | -1.926        | 7.61            | -1.758        |
| 2018/5/4 12:00        | 7.48            | -1.877        | 7.66            | -1.710        |
| 2018/5/11 12:00       | 7.48            | -1.875        | 7.76            | -1.608        |
| 2018/5/18 12:00       | 7.58            | -1.778        | 7.83            | -1.537        |
| 2018/5/25 12:00       | 7.54            | -1.819        | 7.69            | -1.678        |
| 2018/6/1 12:00        | 7.47            | -1.894        | 7.65            | -1.723        |
| 2018/6/8 12:00        | 7.43            | -1.934        | 7.60            | -1.772        |
| 2018/6/15 12:00       | 7.34            | -2.022        | 7.63            | -1.744        |
| 2018/6/22 12:00       | 7.29            | -2.072        | 7.67            | -1.700        |
| 2018/6/29 12:00       | 7.23            | -2.133        | 7.62            | -1.749        |
| 2018/7/6 12:00        | 7.19            | -2.168        | 7.53            | -1.840        |
| 2018/7/13 12:00       | 7.23            | -2.129        | 7.54            | -1.833        |
| 2018/7/20 12:00       | 7.19            | -2.168        | 7.47            | -1.898        |
| 2018/7/27 12:00       | 7.17            | -2.188        | 7.42            | -1.951        |
| 2018/8/3 12:00        | 7.15            | -2.213        | 7.56            | -1.809        |
| 2018/8/10 12:00       | 7.11            | -2.253        | 7.51            | -1.856        |
| 1段階目水位<br>2018/2/24まで | 7.10            | -2.26         | 7.10            | -2.27         |
| 2段階目水位<br>2018/5/24まで | 6.90            | -2.46         | 6.90            | -2.47         |
| 最終水位<br>2018/8/24まで   | 6.70            | -2.66         | 6.70            | -2.67         |



[地下水位]

| 事業区域名<br>計測地点名     | 6丁目(道路部)        |               |                 |               |                 |               |                 |               |
|--------------------|-----------------|---------------|-----------------|---------------|-----------------|---------------|-----------------|---------------|
|                    | 6E_1            |               | 6E_2            |               | 6E_3            |               | 6E_4            |               |
| 計測地点地盤高<br>(T.P.m) | 8.82            |               | 8.84            |               | 8.79            |               | 8.66            |               |
| 計測日                | 地下水位<br>(T.P.m) | 地下水位<br>(GLm) | 地下水位<br>(T.P.m) | 地下水位<br>(GLm) | 地下水位<br>(T.P.m) | 地下水位<br>(GLm) | 地下水位<br>(T.P.m) | 地下水位<br>(GLm) |
| 2017/11/25 12:00   | 7.31            | -1.514        | 7.32            | -1.518        | 7.43            | -1.358        | 7.39            | -1.266        |
| 2017/12/25 12:00   | 6.74            | -2.078        | 6.75            | -2.094        | 6.86            | -1.926        | 6.83            | -1.833        |
| 2018/1/5 12:00     | 6.82            | -2.005        | 6.82            | -2.020        | 6.93            | -1.857        | 6.90            | -1.760        |
| 2018/1/12 12:00    | 6.84            | -1.980        | 6.84            | -1.995        | 6.96            | -1.832        | 6.93            | -1.732        |
| 2018/1/19 12:00    | 6.86            | -1.959        | 6.87            | -1.973        | 6.98            | -1.810        | 6.95            | -1.710        |
| 2018/1/26 12:00    | 6.94            | -1.885        | 6.94            | -1.899        | 7.05            | -1.736        | 7.02            | -1.637        |
| 2018/2/2 12:00     | 6.99            | -1.833        | 6.99            | -1.852        | 7.10            | -1.685        | 7.07            | -1.587        |
| 2018/2/9 12:00     | 7.04            | -1.784        | 7.04            | -1.798        | 7.16            | -1.635        | 7.13            | -1.534        |
| 2018/2/16 12:00    | 7.04            | -1.776        | 7.05            | -1.788        | 7.17            | -1.624        | 7.14            | -1.524        |
| 2018/2/23 12:00    | 7.04            | -1.777        | 7.05            | -1.789        | 7.17            | -1.625        | 7.13            | -1.525        |
| 2018/3/2 12:00     | 7.12            | -1.705        | 7.12            | -1.720        | 7.23            | -1.557        | 7.20            | -1.457        |
| 2018/3/9 12:00     | 7.36            | -1.465        | 7.37            | -1.475        | 7.47            | -1.318        | 7.44            | -1.225        |
| 2018/3/16 12:00    | 7.32            | -1.496        | 7.33            | -1.510        | 7.45            | -1.341        | 7.41            | -1.248        |
| 2018/3/23 12:00    | 7.47            | -1.346        | 7.49            | -1.354        | 7.60            | -1.185        | 7.56            | -1.095        |
| 2018/3/30 12:00    | 7.14            | -1.680        | 7.15            | -1.694        | 7.26            | -1.526        | 7.22            | -1.438        |
| 2018/4/6 12:00     | 7.23            | -1.588        | 7.24            | -1.599        | 7.36            | -1.431        | 7.31            | -1.346        |
| 2018/4/13 12:00    | 7.19            | -1.628        | 7.20            | -1.638        | 7.32            | -1.469        | 7.28            | -1.385        |
| 2018/4/20 12:00    | 7.21            | -1.609        | 7.22            | -1.618        | 7.34            | -1.449        | 7.29            | -1.369        |
| 2018/4/27 12:00    | 7.31            | -1.511        | 7.32            | -1.516        | 7.44            | -1.347        | 7.39            | -1.270        |
| 2018/5/4 12:00     | 7.29            | -1.533        | 7.30            | -1.537        | 7.42            | -1.367        | 7.36            | -1.299        |
| 2018/5/11 12:00    | 7.29            | -1.527        | 7.31            | -1.534        | 7.43            | -1.364        | 7.36            | -1.297        |
| 2018/5/18 12:00    | 7.30            | -1.516        | 7.33            | -1.514        | 7.45            | -1.340        | 7.38            | -1.275        |
| 2018/5/25 12:00    | 7.23            | -1.595        | 7.24            | -1.599        | 7.37            | -1.422        | 7.29            | -1.365        |
| 2018/6/1 12:00     | 6.96            | -1.864        | 6.96            | -1.877        | 7.09            | -1.700        | 7.02            | -1.644        |
| 2018/6/8 12:00     | 6.89            | -1.926        | 6.90            | -1.939        | 7.03            | -1.761        | 6.95            | -1.708        |
| 2018/6/15 12:00    | 6.69            | -2.128        | 6.70            | -2.145        | 6.82            | -1.974        | 6.74            | -1.921        |
| 2018/6/22 12:00    | 6.69            | -2.126        | 6.70            | -2.142        | 6.82            | -1.969        | 6.74            | -1.916        |
| 2018/6/29 12:00    | 6.69            | -2.125        | 6.70            | -2.141        | 6.83            | -1.960        | 6.76            | -1.903        |
| 2018/7/6 12:00     | 6.69            | -2.125        | 6.69            | -2.150        | 6.82            | -1.967        | 6.73            | -1.927        |
| 2018/7/13 12:00    | 6.70            | -2.122        | 6.70            | -2.140        | 6.84            | -1.953        | 6.75            | -1.912        |
| 2018/7/20 12:00    | 6.70            | -2.122        | 6.70            | -2.144        | 6.84            | -1.953        | 6.74            | -1.922        |
| 2018/7/27 12:00    | 6.69            | -2.135        | 6.68            | -2.156        | 6.83            | -1.963        | 6.72            | -1.937        |
| 2018/8/3 12:00     | 6.17            | -2.647        | 6.17            | -2.671        | 6.30            | -2.491        | 6.20            | -2.457        |
| 2018/8/10 12:00    | 6.16            | -2.656        | 6.16            | -2.683        | 6.30            | -2.490        | 6.21            | -2.453        |

[沈下量]

| 事業区域名<br>計測地点名   | 6丁目(民地部)    |             |
|------------------|-------------|-------------|
|                  | 6F_1        | 6F_2        |
| 計測日              | 沈下量<br>(cm) | 沈下量<br>(cm) |
| 2017/11/25 12:00 | 0.0         | 0.0         |
| 2017/12/25 12:00 | 0.1         | 0.1         |
| 2018/1/5 12:00   | 0.1         | 0.2         |
| 2018/1/12 12:00  | 0.1         | 0.2         |
| 2018/1/19 12:00  | 0.2         | 0.2         |
| 2018/1/26 12:00  | 0.2         | 0.3         |
| 2018/2/2 12:00   | 0.2         | 0.3         |
| 2018/2/9 12:00   | 0.2         | 0.3         |
| 2018/2/16 12:00  | 0.2         | 0.3         |
| 2018/2/23 12:00  | 0.2         | 0.3         |
| 2018/3/2 12:00   | 0.2         | 0.3         |
| 2018/3/9 12:00   | 0.2         | 0.3         |
| 2018/3/16 12:00  | 0.2         | 0.3         |
| 2018/3/23 12:00  | 0.1         | 0.2         |
| 2018/3/30 12:00  | 0.2         | 0.2         |
| 2018/4/6 12:00   | 0.1         | 0.2         |
| 2018/4/13 12:00  | 0.2         | 0.3         |
| 2018/4/20 12:00  | 0.2         | 0.3         |
| 2018/4/27 12:00  | 0.2         | 0.3         |
| 2018/5/4 12:00   | 0.1         | 0.2         |
| 2018/5/11 12:00  | 0.2         | 0.2         |
| 2018/5/18 12:00  | 0.1         | 0.2         |
| 2018/5/25 12:00  | 0.1         | 0.2         |
| 2018/6/1 12:00   | 0.1         | 0.2         |
| 2018/6/8 12:00   | 0.1         | 0.2         |
| 2018/6/15 12:00  | 0.1         | 0.3         |
| 2018/6/22 12:00  | 0.2         | 0.3         |
| 2018/6/29 12:00  | 0.2         | 0.3         |
| 2018/7/6 12:00   | 0.2         | 0.3         |
| 2018/7/13 12:00  | 0.2         | 0.3         |
| 2018/7/20 12:00  | 0.2         | 0.3         |
| 2018/7/27 12:00  | 0.2         | 0.4         |
| 2018/8/3 12:00   | 0.2         | 0.3         |
| 2018/8/10 12:00  | 0.2         | 0.4         |

[沈下量]

| 事業区域名<br>計測地点名   | 6丁目(道路部)    |             |             |             |             |
|------------------|-------------|-------------|-------------|-------------|-------------|
|                  | 6E_1        | 6E_2        | 6E_3        | 6E_4        | 6D_1(ポンプ部)  |
| 計測日              | 沈下量<br>(cm) | 沈下量<br>(cm) | 沈下量<br>(cm) | 沈下量<br>(cm) | 沈下量<br>(cm) |
| 2017/11/25 12:00 | 0.0         | 0.0         | 0.0         | 0.0         | 0.0         |
| 2017/12/25 12:00 | 0.1         | 0.1         | 0.2         | 0.2         | 0.1         |
| 2018/1/5 12:00   | 0.1         | 0.1         | 0.3         | 0.2         | 0.2         |
| 2018/1/12 12:00  | 0.1         | 0.1         | 0.3         | 0.3         | 0.2         |
| 2018/1/19 12:00  | 0.2         | 0.2         | 0.4         | 0.3         | 0.2         |
| 2018/1/26 12:00  | 0.2         | 0.2         | 0.4         | 0.3         | 0.2         |
| 2018/2/2 12:00   | 0.2         | 0.2         | 0.4         | 0.3         | 0.2         |
| 2018/2/9 12:00   | 0.2         | 0.2         | 0.4         | 0.3         | 0.3         |
| 2018/2/16 12:00  | 0.2         | 0.2         | 0.4         | 0.3         | 0.2         |
| 2018/2/23 12:00  | 0.2         | 0.2         | 0.5         | 0.3         | 0.3         |
| 2018/3/2 12:00   | 0.2         | 0.2         | 0.4         | 0.3         | 0.3         |
| 2018/3/9 12:00   | 0.2         | 0.2         | 0.4         | 0.3         | 0.2         |
| 2018/3/16 12:00  | 0.2         | 0.2         | 0.3         | 0.2         | 0.2         |
| 2018/3/23 12:00  | 0.1         | 0.2         | 0.3         | 0.2         | 0.2         |
| 2018/3/30 12:00  | 0.1         | 0.2         | 0.3         | 0.2         | 0.2         |
| 2018/4/6 12:00   | 0.1         | 0.2         | 0.3         | 0.2         | 0.2         |
| 2018/4/13 12:00  | 0.1         | 0.2         | 0.4         | 0.2         | 0.2         |
| 2018/4/20 12:00  | 0.1         | 0.2         | 0.4         | 0.3         | 0.2         |
| 2018/4/27 12:00  | 0.2         | 0.2         | 0.4         | 0.2         | 0.2         |
| 2018/5/4 12:00   | 0.1         | 0.2         | 0.3         | 0.2         | 0.2         |
| 2018/5/11 12:00  | 0.2         | 0.2         | 0.3         | 0.1         | 0.2         |
| 2018/5/18 12:00  | 0.1         | 0.1         | 0.3         | 0.1         | 0.1         |
| 2018/5/25 12:00  | 0.1         | 0.2         | 0.3         | 0.1         | 0.1         |
| 2018/6/1 12:00   | 0.1         | 0.2         | 0.3         | 0.2         | 0.2         |
| 2018/6/8 12:00   | 0.1         | 0.2         | 0.3         | 0.2         | 0.2         |
| 2018/6/15 12:00  | 0.2         | 0.2         | 0.4         | 0.2         | 0.2         |
| 2018/6/22 12:00  | 0.2         | 0.2         | 0.4         | 0.2         | 0.2         |
| 2018/6/29 12:00  | 0.2         | 0.2         | 0.4         | 0.3         | 0.3         |
| 2018/7/6 12:00   | 0.2         | 0.2         | 0.4         | 0.3         | 0.3         |
| 2018/7/13 12:00  | 0.2         | 0.2         | 0.4         | 0.3         | 0.3         |
| 2018/7/20 12:00  | 0.2         | 0.3         | 0.4         | 0.3         | 0.3         |
| 2018/7/27 12:00  | 0.2         | 0.3         | 0.5         | 0.3         | 0.3         |
| 2018/8/3 12:00   | 0.2         | 0.3         | 0.5         | 0.3         | 0.3         |
| 2018/8/10 12:00  | 0.3         | 0.3         | 0.5         | 0.4         | 0.4         |

[地下水位]

| 事業区域名                 | 7・12丁目(民地部)     |               |                 |               |
|-----------------------|-----------------|---------------|-----------------|---------------|
| 計測地点名                 | 7F_1            |               | 7F_2            |               |
| 計測地点地盤高<br>(T.P.m)    | 9.31            |               | 8.50            |               |
| 計測日                   | 地下水位<br>(T.P.m) | 地下水位<br>(GLm) | 地下水位<br>(T.P.m) | 地下水位<br>(GLm) |
| 2017/11/25 12:00      | 7.75            | -1.556        | 7.23            | -1.266        |
| 2017/12/25 12:00      | 7.41            | -1.896        | 6.78            | -1.718        |
| 2018/1/5 12:00        | 7.31            | -1.996        | 6.69            | -1.806        |
| 2018/1/12 12:00       | 7.27            | -2.042        | 6.65            | -1.846        |
| 2018/1/19 12:00       | 7.24            | -2.068        | 6.66            | -1.844        |
| 2018/1/26 12:00       | 7.24            | -2.071        | 6.70            | -1.802        |
| 2018/2/2 12:00        | 7.17            | -2.135        | 6.65            | -1.850        |
| 2018/2/9 12:00        | 7.17            | -2.145        | 6.66            | -1.839        |
| 2018/2/16 12:00       | 7.17            | -2.135        | 6.69            | -1.814        |
| 2018/2/23 12:00       | 7.15            | -2.164        | 6.65            | -1.849        |
| 2018/3/2 12:00        | 7.20            | -2.109        | 6.72            | -1.781        |
| 2018/3/9 12:00        | 7.23            | -2.081        | 6.82            | -1.682        |
| 2018/3/16 12:00       | 7.38            | -1.930        | 7.06            | -1.442        |
| 2018/3/23 12:00       | 7.49            | -1.825        | 7.20            | -1.296        |
| 2018/3/30 12:00       | 7.51            | -1.800        | 7.14            | -1.358        |
| 2018/4/6 12:00        | 7.52            | -1.787        | 7.14            | -1.357        |
| 2018/4/13 12:00       | 7.49            | -1.822        | 7.08            | -1.419        |
| 2018/4/20 12:00       | 7.46            | -1.850        | 7.08            | -1.415        |
| 2018/4/27 12:00       | 7.49            | -1.820        | 7.18            | -1.318        |
| 2018/5/4 12:00        | 7.54            | -1.775        | 7.21            | -1.288        |
| 2018/5/11 12:00       | 7.51            | -1.800        | 7.21            | -1.293        |
| 2018/5/18 12:00       | 7.64            | -1.666        | 7.29            | -1.207        |
| 2018/5/25 12:00       | 7.65            | -1.660        | 7.23            | -1.269        |
| 2018/6/1 12:00        | 7.64            | -1.672        | 7.18            | -1.318        |
| 2018/6/8 12:00        | 7.61            | -1.698        | 7.10            | -1.397        |
| 2018/6/15 12:00       | 7.62            | -1.694        | 7.10            | -1.403        |
| 2018/6/22 12:00       | 7.62            | -1.686        | 7.11            | -1.391        |
| 2018/6/29 12:00       | 7.61            | -1.700        | 7.02            | -1.480        |
| 2018/7/6 12:00        | 7.58            | -1.728        | 6.96            | -1.537        |
| 2018/7/13 12:00       | 7.56            | -1.751        | 6.98            | -1.516        |
| 2018/7/20 12:00       | 7.55            | -1.764        | 6.92            | -1.583        |
| 2018/7/27 12:00       | 7.52            | -1.788        | 6.88            | -1.616        |
| 2018/8/3 12:00        | 7.55            | -1.760        | 6.94            | -1.565        |
| 2018/8/10 12:00       | 7.54            | -1.766        | 6.85            | -1.651        |
| 1段階目水位<br>2018/2/24まで | 7.19            | -2.12         | 7.19            | -1.31         |
| 2段階目水位<br>2018/5/24まで | 7.15            | -2.17         | 7.15            | -1.36         |
| 最終水位<br>2018/8/24まで   | 7.10            | -2.21         | 7.10            | -1.40         |

[地下水位]

| 事業区域名              | 7・12丁目(道路部)     |               |                 |               |                 |               |
|--------------------|-----------------|---------------|-----------------|---------------|-----------------|---------------|
| 計測地点名              | 7E_1            |               | 7E_3            |               | 7E_4            |               |
| 計測地点地盤高<br>(T.P.m) | 8.88            |               | 9.11            |               | 8.92            |               |
| 計測日                | 地下水位<br>(T.P.m) | 地下水位<br>(GLm) | 地下水位<br>(T.P.m) | 地下水位<br>(GLm) | 地下水位<br>(T.P.m) | 地下水位<br>(GLm) |
| 2017/11/25 12:00   | 6.95            | -1.934        | 7.31            | -1.801        | 7.28            | -1.640        |
| 2017/12/25 12:00   | 6.37            | -2.511        | 6.74            | -2.370        | 6.71            | -2.212        |
| 2018/1/5 12:00     | 6.38            | -2.501        | 6.74            | -2.367        | 6.71            | -2.211        |
| 2018/1/12 12:00    | 6.37            | -2.510        | 6.73            | -2.380        | 6.70            | -2.221        |
| 2018/1/19 12:00    | 6.35            | -2.534        | 6.70            | -2.405        | 6.67            | -2.246        |
| 2018/1/26 12:00    | 6.40            | -2.480        | 6.76            | -2.352        | 6.73            | -2.194        |
| 2018/2/2 12:00     | 6.41            | -2.474        | 6.76            | -2.348        | 6.73            | -2.191        |
| 2018/2/9 12:00     | 6.41            | -2.471        | 6.77            | -2.343        | 6.73            | -2.187        |
| 2018/2/16 12:00    | 6.38            | -2.496        | 6.74            | -2.369        | 6.70            | -2.217        |
| 2018/2/23 12:00    | 6.34            | -2.542        | 6.69            | -2.418        | 6.66            | -2.263        |
| 2018/3/2 12:00     | 6.41            | -2.469        | 6.76            | -2.351        | 6.73            | -2.191        |
| 2018/3/9 12:00     | 6.77            | -2.114        | 7.11            | -2.003        | 7.08            | -1.838        |
| 2018/3/16 12:00    | 6.90            | -1.979        | 7.25            | -1.864        | 7.21            | -1.708        |
| 2018/3/23 12:00    | 7.07            | -1.812        | 7.41            | -1.695        | 7.37            | -1.546        |
| 2018/3/30 12:00    | 6.90            | -1.984        | 7.24            | -1.875        | 7.20            | -1.717        |
| 2018/4/6 12:00     | 6.88            | -1.996        | 7.22            | -1.889        | 7.19            | -1.728        |
| 2018/4/13 12:00    | 6.84            | -2.038        | 7.18            | -1.930        | 7.15            | -1.770        |
| 2018/4/20 12:00    | 6.85            | -2.030        | 7.19            | -1.918        | 7.16            | -1.757        |
| 2018/4/27 12:00    | 6.94            | -1.935        | 7.29            | -1.821        | 7.26            | -1.661        |
| 2018/5/4 12:00     | 6.89            | -1.985        | 7.24            | -1.869        | 7.21            | -1.708        |
| 2018/5/11 12:00    | 6.98            | -1.900        | 7.33            | -1.785        | 7.29            | -1.626        |
| 2018/5/18 12:00    | 6.96            | -1.921        | 7.31            | -1.804        | 7.28            | -1.643        |
| 2018/5/25 12:00    | 6.84            | -2.038        | 7.19            | -1.925        | 7.16            | -1.761        |
| 2018/6/1 12:00     | 6.56            | -2.317        | 6.91            | -2.200        | 6.88            | -2.038        |
| 2018/6/8 12:00     | 6.61            | -2.270        | 6.96            | -2.151        | 6.93            | -1.989        |
| 2018/6/15 12:00    | 6.42            | -2.458        | 6.77            | -2.339        | 6.74            | -2.178        |
| 2018/6/22 12:00    | 6.41            | -2.467        | 6.76            | -2.346        | 6.73            | -2.187        |
| 2018/6/29 12:00    | 6.42            | -2.462        | 6.77            | -2.336        | 6.74            | -2.177        |
| 2018/7/6 12:00     | 6.41            | -2.465        | 6.77            | -2.338        | 6.71            | -2.211        |
| 2018/7/13 12:00    | 6.41            | -2.468        | 6.77            | -2.337        | 6.74            | -2.182        |
| 2018/7/20 12:00    | 6.40            | -2.479        | 6.76            | -2.349        | 6.73            | -2.194        |
| 2018/7/27 12:00    | 6.40            | -2.482        | 6.76            | -2.349        | 6.72            | -2.196        |
| 2018/8/3 12:00     | 6.07            | -2.813        | 6.41            | -2.702        | 6.29            | -2.628        |
| 2018/8/10 12:00    | 6.04            | -2.837        | 6.41            | -2.702        | 6.30            | -2.622        |

※7E\_2は欠番

[沈下量]

| 事業区域名<br>計測地点名   | 7・12丁目(民地部) |             |
|------------------|-------------|-------------|
|                  | 7F_1        | 7F_2        |
| 計測日              | 沈下量<br>(cm) | 沈下量<br>(cm) |
| 2017/11/25 12:00 | 0.0         | 0.0         |
| 2017/12/25 12:00 | 0.2         | 0.1         |
| 2018/1/5 12:00   | 0.2         | 0.1         |
| 2018/1/12 12:00  | 0.3         | 0.1         |
| 2018/1/19 12:00  | 0.3         | 0.1         |
| 2018/1/26 12:00  | 0.3         | 0.1         |
| 2018/2/2 12:00   | 0.4         | 0.2         |
| 2018/2/9 12:00   | 0.4         | 0.2         |
| 2018/2/16 12:00  | 0.4         | 0.2         |
| 2018/2/23 12:00  | 0.4         | 0.2         |
| 2018/3/2 12:00   | 0.4         | 0.2         |
| 2018/3/9 12:00   | 0.4         | 0.2         |
| 2018/3/16 12:00  | 0.4         | 0.2         |
| 2018/3/23 12:00  | 0.3         | 0.2         |
| 2018/3/30 12:00  | 0.4         | 0.2         |
| 2018/4/6 12:00   | 0.3         | 0.2         |
| 2018/4/13 12:00  | 0.4         | 0.2         |
| 2018/4/20 12:00  | 0.4         | 0.2         |
| 2018/4/27 12:00  | 0.4         | 0.2         |
| 2018/5/4 12:00   | 0.3         | 0.2         |
| 2018/5/11 12:00  | 0.3         | 0.2         |
| 2018/5/18 12:00  | 0.3         | 0.2         |
| 2018/5/25 12:00  | 0.3         | 0.2         |
| 2018/6/1 12:00   | 0.3         | 0.2         |
| 2018/6/8 12:00   | 0.3         | 0.2         |
| 2018/6/15 12:00  | 0.3         | 0.2         |
| 2018/6/22 12:00  | 0.3         | 0.2         |
| 2018/6/29 12:00  | 0.4         | 0.2         |
| 2018/7/6 12:00   | 0.4         | 0.3         |
| 2018/7/13 12:00  | 0.4         | 0.3         |
| 2018/7/20 12:00  | 0.4         | 0.3         |
| 2018/7/27 12:00  | 0.4         | 0.3         |
| 2018/8/3 12:00   | 0.4         | 0.4         |
| 2018/8/10 12:00  | 0.5         | 0.4         |

[沈下量]

| 事業区域名<br>計測地点名   | 7・12丁目(道路部) |             |             |             |
|------------------|-------------|-------------|-------------|-------------|
|                  | 7E_1        | 7E_3        | 7E_4        | 7D_1(ポンプ部)  |
| 計測日              | 沈下量<br>(cm) | 沈下量<br>(cm) | 沈下量<br>(cm) | 沈下量<br>(cm) |
| 2017/11/25 12:00 | 0.0         | 0.0         | 0.0         | 0.0         |
| 2017/12/25 12:00 | 0.1         | 0.2         | 0.2         | 0.1         |
| 2018/1/5 12:00   | 0.1         | 0.2         | 0.3         | 0.1         |
| 2018/1/12 12:00  | 0.1         | 0.3         | 0.3         | 0.2         |
| 2018/1/19 12:00  | 0.1         | 0.3         | 0.3         | 0.2         |
| 2018/1/26 12:00  | 0.1         | 0.3         | 0.3         | 0.2         |
| 2018/2/2 12:00   | 0.1         | 0.4         | 0.4         | 0.2         |
| 2018/2/9 12:00   | 0.2         | 0.4         | 0.4         | 0.2         |
| 2018/2/16 12:00  | 0.2         | 0.4         | 0.4         | 0.2         |
| 2018/2/23 12:00  | 0.2         | 0.4         | 0.4         | 0.2         |
| 2018/3/2 12:00   | 0.2         | 0.4         | 0.4         | 0.3         |
| 2018/3/9 12:00   | 0.2         | 0.4         | 0.4         | 0.3         |
| 2018/3/16 12:00  | 0.2         | 0.4         | 0.3         | 0.2         |
| 2018/3/23 12:00  | 0.2         | 0.4         | 0.3         | 0.2         |
| 2018/3/30 12:00  | 0.2         | 0.4         | 0.3         | 0.2         |
| 2018/4/6 12:00   | 0.2         | 0.3         | 0.3         | 0.2         |
| 2018/4/13 12:00  | 0.2         | 0.4         | 0.3         | 0.2         |
| 2018/4/20 12:00  | 0.2         | 0.4         | 0.3         | 0.2         |
| 2018/4/27 12:00  | 0.2         | 0.4         | 0.3         | 0.2         |
| 2018/5/4 12:00   | 0.2         | 0.3         | 0.3         | 0.2         |
| 2018/5/11 12:00  | 0.2         | 0.4         | 0.3         | 0.2         |
| 2018/5/18 12:00  | 0.2         | 0.3         | 0.2         | 0.2         |
| 2018/5/25 12:00  | 0.2         | 0.3         | 0.2         | 0.2         |
| 2018/6/1 12:00   | 0.2         | 0.3         | 0.3         | 0.3         |
| 2018/6/8 12:00   | 0.2         | 0.4         | 0.3         | 0.3         |
| 2018/6/15 12:00  | 0.2         | 0.4         | 0.3         | 0.3         |
| 2018/6/22 12:00  | 0.2         | 0.4         | 0.3         | 0.3         |
| 2018/6/29 12:00  | 0.3         | 0.4         | 0.4         | 0.3         |
| 2018/7/6 12:00   | 0.3         | 0.4         | 0.4         | 0.4         |
| 2018/7/13 12:00  | 0.3         | 0.4         | 0.4         | 0.4         |
| 2018/7/20 12:00  | 0.3         | 0.5         | 0.4         | 0.4         |
| 2018/7/27 12:00  | 0.4         | 0.5         | 0.4         | 0.4         |
| 2018/8/3 12:00   | 0.4         | 0.5         | 0.4         | 0.5         |
| 2018/8/10 12:00  | 0.4         | 0.5         | 0.5         | 0.5         |

※7E\_2は欠番

**[地下水位]**

|                       |                 |               |
|-----------------------|-----------------|---------------|
| 事業区域名                 | 8丁目(民地部)        |               |
| 計測地点名                 | 8F_1            |               |
| 計測地点地盤高<br>(T.P.m)    | 9.30            |               |
| 計測日                   | 地下水位<br>(T.P.m) | 地下水位<br>(GLm) |
| 2017/11/25 12:00      | 8.09            | -1.211        |
| 2017/12/25 12:00      | 7.71            | -1.589        |
| 2018/1/5 12:00        | 7.57            | -1.726        |
| 2018/1/12 12:00       | 7.52            | -1.782        |
| 2018/1/19 12:00       | 7.51            | -1.790        |
| 2018/1/26 12:00       | 7.56            | -1.740        |
| 2018/2/2 12:00        | 7.44            | -1.859        |
| 2018/2/9 12:00        | 7.53            | -1.765        |
| 2018/2/16 12:00       | 7.63            | -1.666        |
| 2018/2/23 12:00       | 7.61            | -1.694        |
| 2018/3/2 12:00        | 7.97            | -1.327        |
| 2018/3/9 12:00        | 9.25            | -0.049        |
| 2018/3/16 12:00       | 8.19            | -1.105        |
| 2018/3/23 12:00       | 8.69            | -0.613        |
| 2018/3/30 12:00       | 8.10            | -1.202        |
| 2018/4/6 12:00        | 8.08            | -1.221        |
| 2018/4/13 12:00       | 7.92            | -1.379        |
| 2018/4/20 12:00       | 7.89            | -1.408        |
| 2018/4/27 12:00       | 7.99            | -1.309        |
| 2018/5/4 12:00        | 7.98            | -1.317        |
| 2018/5/11 12:00       | 8.20            | -1.099        |
| 2018/5/18 12:00       | 8.25            | -1.049        |
| 2018/5/25 12:00       | 8.09            | -1.206        |
| 2018/6/1 12:00        | 7.98            | -1.319        |
| 2018/6/8 12:00        | 7.96            | -1.343        |
| 2018/6/15 12:00       | 7.90            | -1.400        |
| 2018/6/22 12:00       | 7.98            | -1.316        |
| 2018/6/29 12:00       | 7.92            | -1.382        |
| 2018/7/6 12:00        | 7.86            | -1.440        |
| 2018/7/13 12:00       | 7.84            | -1.459        |
| 2018/7/20 12:00       | 7.79            | -1.515        |
| 2018/7/27 12:00       | 7.74            | -1.562        |
| 2018/8/3 12:00        | 7.69            | -1.614        |
| 2018/8/10 12:00       | 7.62            | -1.680        |
| 1段階目水位<br>2018/2/24まで | 7.71            | -1.59         |
| 2段階目水位<br>2018/5/24まで | 7.70            | -1.60         |
| 最終水位<br>2018/8/24まで   | 7.69            | -1.61         |



**[地下水位]**

|                    |                 |               |
|--------------------|-----------------|---------------|
| 事業区域名              | 8丁目(道路部)        |               |
| 計測地点名              | 8E_1            |               |
| 計測地点地盤高<br>(T.P.m) | 8.94            |               |
| 計測日                | 地下水位<br>(T.P.m) | 地下水位<br>(GLm) |
| 2017/11/25 12:00   | 7.71            | -1.227        |
| 2017/12/25 12:00   | 7.30            | -1.640        |
| 2018/1/5 12:00     | 7.29            | -1.651        |
| 2018/1/12 12:00    | 7.27            | -1.666        |
| 2018/1/19 12:00    | 7.28            | -1.662        |
| 2018/1/26 12:00    | 7.36            | -1.577        |
| 2018/2/2 12:00     | 7.37            | -1.566        |
| 2018/2/9 12:00     | 7.41            | -1.535        |
| 2018/2/16 12:00    | 7.43            | -1.512        |
| 2018/2/23 12:00    | 7.45            | -1.493        |
| 2018/3/2 12:00     | 7.61            | -1.332        |
| 2018/3/9 12:00     | 7.93            | -1.008        |
| 2018/3/16 12:00    | 7.92            | -1.024        |
| 2018/3/23 12:00    | 7.92            | -1.021        |
| 2018/3/30 12:00    | 7.89            | -1.047        |
| 2018/4/6 12:00     | 7.83            | -1.110        |
| 2018/4/13 12:00    | 7.72            | -1.215        |
| 2018/4/20 12:00    | 7.74            | -1.202        |
| 2018/4/27 12:00    | 7.86            | -1.083        |
| 2018/5/4 12:00     | 7.80            | -1.142        |
| 2018/5/11 12:00    | 7.93            | -1.014        |
| 2018/5/18 12:00    | 7.92            | -1.024        |
| 2018/5/25 12:00    | 7.77            | -1.171        |
| 2018/6/1 12:00     | 7.63            | -1.311        |
| 2018/6/8 12:00     | 7.63            | -1.313        |
| 2018/6/15 12:00    | 7.47            | -1.474        |
| 2018/6/22 12:00    | 7.42            | -1.521        |
| 2018/6/29 12:00    | 7.50            | -1.444        |
| 2018/7/6 12:00     | 7.41            | -1.526        |
| 2018/7/13 12:00    | 7.47            | -1.468        |
| 2018/7/20 12:00    | 7.50            | -1.436        |
| 2018/7/27 12:00    | 7.47            | -1.468        |
| 2018/8/3 12:00     | 5.76            | -3.178        |
| 2018/8/10 12:00    | 5.77            | -3.175        |

[沈下量]

| 事業区域名            | 8丁目(民地部)    |
|------------------|-------------|
| 計測地点名            | 8F_1        |
| 計測日              | 沈下量<br>(cm) |
| 2017/11/25 12:00 | 0.0         |
| 2017/12/25 12:00 | 0.2         |
| 2018/1/5 12:00   | 0.2         |
| 2018/1/12 12:00  | 0.2         |
| 2018/1/19 12:00  | 0.3         |
| 2018/1/26 12:00  | 0.3         |
| 2018/2/2 12:00   | 0.4         |
| 2018/2/9 12:00   | 0.4         |
| 2018/2/16 12:00  | 0.3         |
| 2018/2/23 12:00  | 0.4         |
| 2018/3/2 12:00   | 0.3         |
| 2018/3/9 12:00   | 0.3         |
| 2018/3/16 12:00  | 0.3         |
| 2018/3/23 12:00  | 0.2         |
| 2018/3/30 12:00  | 0.2         |
| 2018/4/6 12:00   | 0.2         |
| 2018/4/13 12:00  | 0.2         |
| 2018/4/20 12:00  | 0.3         |
| 2018/4/27 12:00  | 0.3         |
| 2018/5/4 12:00   | 0.2         |
| 2018/5/11 12:00  | 0.2         |
| 2018/5/18 12:00  | 0.2         |
| 2018/5/25 12:00  | 0.2         |
| 2018/6/1 12:00   | 0.2         |
| 2018/6/8 12:00   | 0.2         |
| 2018/6/15 12:00  | 0.2         |
| 2018/6/22 12:00  | 0.2         |
| 2018/6/29 12:00  | 0.2         |
| 2018/7/6 12:00   | 0.3         |
| 2018/7/13 12:00  | 0.3         |
| 2018/7/20 12:00  | 0.3         |
| 2018/7/27 12:00  | 0.3         |
| 2018/8/3 12:00   | 0.4         |
| 2018/8/10 12:00  | 0.4         |

[沈下量]

| 事業区域名<br>計測地点名   | 8丁目(道路部)    |             |
|------------------|-------------|-------------|
|                  | 8E_1        | 8D_1(ポンプ部)  |
| 計測日              | 沈下量<br>(cm) | 沈下量<br>(cm) |
| 2017/11/25 12:00 | 0.0         | 0.0         |
| 2017/12/25 12:00 | 0.3         | 0.1         |
| 2018/1/5 12:00   | 0.3         | 0.1         |
| 2018/1/12 12:00  | 0.3         | 0.1         |
| 2018/1/19 12:00  | 0.4         | 0.1         |
| 2018/1/26 12:00  | 0.4         | 0.1         |
| 2018/2/2 12:00   | 0.4         | 0.2         |
| 2018/2/9 12:00   | 0.4         | 0.2         |
| 2018/2/16 12:00  | 0.4         | 0.2         |
| 2018/2/23 12:00  | 0.4         | 0.2         |
| 2018/3/2 12:00   | 0.4         | 0.2         |
| 2018/3/9 12:00   | 0.4         | 0.2         |
| 2018/3/16 12:00  | 0.4         | 0.1         |
| 2018/3/23 12:00  | 0.3         | 0.1         |
| 2018/3/30 12:00  | 0.3         | 0.1         |
| 2018/4/6 12:00   | 0.3         | 0.1         |
| 2018/4/13 12:00  | 0.3         | 0.1         |
| 2018/4/20 12:00  | 0.4         | 0.1         |
| 2018/4/27 12:00  | 0.4         | 0.1         |
| 2018/5/4 12:00   | 0.4         | 0.1         |
| 2018/5/11 12:00  | 0.4         | 0.1         |
| 2018/5/18 12:00  | 0.3         | 0.1         |
| 2018/5/25 12:00  | 0.3         | 0.1         |
| 2018/6/1 12:00   | 0.4         | 0.1         |
| 2018/6/8 12:00   | 0.4         | 0.1         |
| 2018/6/15 12:00  | 0.4         | 0.1         |
| 2018/6/22 12:00  | 0.4         | 0.1         |
| 2018/6/29 12:00  | 0.4         | 0.2         |
| 2018/7/6 12:00   | 0.4         | 0.2         |
| 2018/7/13 12:00  | 0.5         | 0.2         |
| 2018/7/20 12:00  | 0.5         | 0.2         |
| 2018/7/27 12:00  | 0.5         | 0.2         |
| 2018/8/3 12:00   | 0.6         | 0.2         |
| 2018/8/10 12:00  | 0.7         | 0.3         |

[地下水位]

| 事業区域名                 | 10丁目(民地部)       |               |                 |               |
|-----------------------|-----------------|---------------|-----------------|---------------|
| 計測地点名                 | 10F_1           |               | 10F_2           |               |
| 計測地点地盤高<br>(T.P.m)    | 8.96            |               | 9.15            |               |
| 計測日                   | 地下水位<br>(T.P.m) | 地下水位<br>(GLm) | 地下水位<br>(T.P.m) | 地下水位<br>(GLm) |
| 2017/11/25 12:00      | 7.13            | -1.827        | 7.30            | -1.848        |
| 2017/12/25 12:00      | 6.69            | -2.274        | 7.01            | -2.138        |
| 2018/1/5 12:00        | 6.69            | -2.274        | 6.92            | -2.232        |
| 2018/1/12 12:00       | 6.67            | -2.286        | 6.89            | -2.261        |
| 2018/1/19 12:00       | 6.66            | -2.298        | 6.89            | -2.262        |
| 2018/1/26 12:00       | 6.69            | -2.274        | 6.90            | -2.245        |
| 2018/2/2 12:00        | 6.70            | -2.258        | 6.84            | -2.308        |
| 2018/2/9 12:00        | 6.72            | -2.235        | 6.87            | -2.281        |
| 2018/2/16 12:00       | 6.72            | -2.239        | 6.89            | -2.264        |
| 2018/2/23 12:00       | 6.70            | -2.256        | 6.85            | -2.303        |
| 2018/3/2 12:00        | 6.72            | -2.240        | 6.93            | -2.222        |
| 2018/3/9 12:00        | 6.82            | -2.143        | 6.93            | -2.218        |
| 2018/3/16 12:00       | 7.04            | -1.919        | 7.07            | -2.083        |
| 2018/3/23 12:00       | 7.09            | -1.866        | 7.15            | -2.002        |
| 2018/3/30 12:00       | 7.05            | -1.910        | 7.12            | -2.025        |
| 2018/4/6 12:00        | 7.02            | -1.936        | 7.13            | -2.017        |
| 2018/4/13 12:00       | 6.98            | -1.981        | 7.10            | -2.050        |
| 2018/4/20 12:00       | 6.98            | -1.979        | 7.08            | -2.068        |
| 2018/4/27 12:00       | 7.06            | -1.901        | 7.13            | -2.017        |
| 2018/5/4 12:00        | 7.08            | -1.880        | 7.18            | -1.965        |
| 2018/5/11 12:00       | 7.17            | -1.789        | 7.16            | -1.991        |
| 2018/5/18 12:00       | 7.24            | -1.721        | 7.27            | -1.876        |
| 2018/5/25 12:00       | 7.16            | -1.801        | 7.27            | -1.880        |
| 2018/6/1 12:00        | 7.07            | -1.887        | 7.25            | -1.899        |
| 2018/6/8 12:00        | 7.04            | -1.924        | 7.22            | -1.931        |
| 2018/6/15 12:00       | 6.94            | -2.023        | 7.20            | -1.950        |
| 2018/6/22 12:00       | 6.70            | -2.263        | 7.19            | -1.963        |
| 2018/6/29 12:00       | 6.62            | -2.339        | 7.13            | -2.020        |
| 2018/7/6 12:00        | 6.59            | -2.371        | 7.08            | -2.065        |
| 2018/7/13 12:00       | 6.58            | -2.380        | 7.06            | -2.095        |
| 2018/7/20 12:00       | 6.57            | -2.393        | 7.01            | -2.136        |
| 2018/7/27 12:00       | 6.56            | -2.401        | 6.97            | -2.176        |
| 2018/8/3 12:00        | 6.54            | -2.424        | 7.02            | -2.131        |
| 2018/8/10 12:00       | 6.48            | -2.483        | 7.01            | -2.138        |
| 1段階目水位<br>2018/2/24まで | 6.94            | -2.02         | 6.94            | -2.21         |
| 2段階目水位<br>2018/5/24まで | 6.75            | -2.21         | 6.75            | -2.40         |
| 最終水位<br>2018/8/24まで   | 6.56            | -2.40         | 6.56            | -2.59         |

[地下水位]

| 事業区域名<br>計測地点名     | 10丁目(道路部)       |               |                 |               |                 |               |                 |               |
|--------------------|-----------------|---------------|-----------------|---------------|-----------------|---------------|-----------------|---------------|
|                    | 10E_1           |               | 10E_2           |               | 10E_3           |               | 10E_4           |               |
| 計測地点地盤高<br>(T.P.m) | 8.67            |               | 8.96            |               | 8.49            |               | 8.58            |               |
| 計測日                | 地下水位<br>(T.P.m) | 地下水位<br>(GLm) | 地下水位<br>(T.P.m) | 地下水位<br>(GLm) | 地下水位<br>(T.P.m) | 地下水位<br>(GLm) | 地下水位<br>(T.P.m) | 地下水位<br>(GLm) |
| 2017/11/25 12:00   | 7.18            | -1.487        | 7.14            | -1.822        | 7.21            | -1.280        | 7.25            | -1.327        |
| 2017/12/25 12:00   | 6.76            | -1.909        | 6.72            | -2.245        | 6.79            | -1.698        | 6.84            | -1.740        |
| 2018/1/5 12:00     | 6.75            | -1.922        | 6.71            | -2.253        | 6.78            | -1.706        | 6.83            | -1.752        |
| 2018/1/12 12:00    | 6.74            | -1.932        | 6.70            | -2.261        | 6.77            | -1.716        | 6.82            | -1.760        |
| 2018/1/19 12:00    | 6.73            | -1.939        | 6.70            | -2.263        | 6.76            | -1.726        | 6.81            | -1.771        |
| 2018/1/26 12:00    | 6.78            | -1.895        | 6.74            | -2.221        | 6.81            | -1.680        | 6.86            | -1.724        |
| 2018/2/2 12:00     | 6.78            | -1.888        | 6.75            | -2.210        | 6.82            | -1.674        | 6.86            | -1.715        |
| 2018/2/9 12:00     | 6.79            | -1.877        | 6.76            | -2.197        | 6.83            | -1.662        | 6.88            | -1.703        |
| 2018/2/16 12:00    | 6.78            | -1.886        | 6.75            | -2.207        | 6.82            | -1.673        | 6.87            | -1.713        |
| 2018/2/23 12:00    | 6.77            | -1.904        | 6.74            | -2.224        | 6.80            | -1.690        | 6.85            | -1.731        |
| 2018/3/2 12:00     | 6.84            | -1.830        | 6.80            | -2.159        | 6.87            | -1.624        | 6.92            | -1.660        |
| 2018/3/9 12:00     | 7.09            | -1.582        | 7.06            | -1.905        | 7.11            | -1.375        | 7.17            | -1.409        |
| 2018/3/16 12:00    | 7.09            | -1.583        | 7.05            | -1.909        | 7.12            | -1.368        | 7.17            | -1.408        |
| 2018/3/23 12:00    | 7.21            | -1.459        | 7.18            | -1.782        | 7.25            | -1.241        | 7.30            | -1.283        |
| 2018/3/30 12:00    | 7.03            | -1.637        | 6.99            | -1.966        | 7.07            | -1.424        | 7.11            | -1.465        |
| 2018/4/6 12:00     | 7.06            | -1.614        | 7.01            | -1.947        | 7.09            | -1.403        | 7.13            | -1.446        |
| 2018/4/13 12:00    | 7.01            | -1.656        | 6.96            | -1.996        | 7.04            | -1.448        | 7.09            | -1.491        |
| 2018/4/20 12:00    | 7.03            | -1.638        | 6.98            | -1.979        | 7.06            | -1.429        | 7.11            | -1.470        |
| 2018/4/27 12:00    | 7.14            | -1.526        | 7.09            | -1.869        | 7.17            | -1.317        | 7.22            | -1.361        |
| 2018/5/4 12:00     | 7.13            | -1.541        | 7.07            | -1.886        | 7.16            | -1.334        | 7.20            | -1.376        |
| 2018/5/11 12:00    | 7.23            | -1.435        | 7.18            | -1.781        | 7.27            | -1.224        | 7.31            | -1.269        |
| 2018/5/18 12:00    | 7.26            | -1.409        | 7.20            | -1.758        | 7.29            | -1.199        | 7.34            | -1.245        |
| 2018/5/25 12:00    | 7.19            | -1.479        | 7.13            | -1.833        | 7.22            | -1.273        | 7.26            | -1.318        |
| 2018/6/1 12:00     | 7.06            | -1.606        | 7.00            | -1.963        | 7.09            | -1.397        | 7.14            | -1.444        |
| 2018/6/8 12:00     | 6.98            | -1.688        | 6.91            | -2.050        | 7.01            | -1.481        | 7.05            | -1.530        |
| 2018/6/15 12:00    | 6.67            | -1.995        | 6.61            | -2.351        | 6.69            | -1.799        | 6.72            | -1.862        |
| 2018/6/22 12:00    | 6.60            | -2.070        | 6.54            | -2.423        | 6.63            | -1.862        | 6.66            | -1.921        |
| 2018/6/29 12:00    | 6.59            | -2.081        | 6.52            | -2.438        | 6.62            | -1.873        | 6.65            | -1.931        |
| 2018/7/6 12:00     | 6.61            | -2.065        | 6.54            | -2.416        | 6.63            | -1.865        | 6.65            | -1.926        |
| 2018/7/13 12:00    | 6.59            | -2.085        | 6.53            | -2.432        | 6.61            | -1.880        | 6.64            | -1.943        |
| 2018/7/20 12:00    | 6.59            | -2.082        | 6.53            | -2.430        | 6.61            | -1.880        | 6.64            | -1.939        |
| 2018/7/27 12:00    | 6.57            | -2.105        | 6.51            | -2.449        | 6.60            | -1.888        | 6.63            | -1.952        |
| 2018/8/3 12:00     | 6.42            | -2.248        | 6.35            | -2.608        | 6.47            | -2.022        | 6.48            | -2.104        |
| 2018/8/10 12:00    | 6.41            | -2.260        | 6.35            | -2.611        | 6.47            | -2.024        | 6.48            | -2.101        |

[沈下量]

| 事業区域名<br>計測地点名   | 10丁目(民地部)   |             |
|------------------|-------------|-------------|
|                  | 10F_1       | 10F_2       |
| 計測日              | 沈下量<br>(cm) | 沈下量<br>(cm) |
| 2017/11/25 12:00 | 0.0         | 0.0         |
| 2017/12/25 12:00 | 0.0         | 0.1         |
| 2018/1/5 12:00   | 0.1         | 0.1         |
| 2018/1/12 12:00  | 0.1         | 0.1         |
| 2018/1/19 12:00  | 0.1         | 0.2         |
| 2018/1/26 12:00  | 0.1         | 0.2         |
| 2018/2/2 12:00   | 0.2         | 0.2         |
| 2018/2/9 12:00   | 0.2         | 0.2         |
| 2018/2/16 12:00  | 0.2         | 0.3         |
| 2018/2/23 12:00  | 0.2         | 0.3         |
| 2018/3/2 12:00   | 0.2         | 0.3         |
| 2018/3/9 12:00   | 0.2         | 0.4         |
| 2018/3/16 12:00  | 0.3         | 0.4         |
| 2018/3/23 12:00  | 0.3         | 0.4         |
| 2018/3/30 12:00  | 0.3         | 0.4         |
| 2018/4/6 12:00   | 0.3         | 0.4         |
| 2018/4/13 12:00  | 0.3         | 0.4         |
| 2018/4/20 12:00  | 0.3         | 0.4         |
| 2018/4/27 12:00  | 0.3         | 0.4         |
| 2018/5/4 12:00   | 0.3         | 0.4         |
| 2018/5/11 12:00  | 0.3         | 0.5         |
| 2018/5/18 12:00  | 0.3         | 0.5         |
| 2018/5/25 12:00  | 0.3         | 0.5         |
| 2018/6/1 12:00   | 0.3         | 0.5         |
| 2018/6/8 12:00   | 0.4         | 0.5         |
| 2018/6/15 12:00  | 0.4         | 0.5         |
| 2018/6/22 12:00  | 0.4         | 0.6         |
| 2018/6/29 12:00  | 0.4         | 0.6         |
| 2018/7/6 12:00   | 0.5         | 0.6         |
| 2018/7/13 12:00  | 0.5         | 0.6         |
| 2018/7/20 12:00  | 0.5         | 0.7         |
| 2018/7/27 12:00  | 0.5         | 0.7         |
| 2018/8/3 12:00   | 0.6         | 0.7         |
| 2018/8/10 12:00  | 0.6         | 0.8         |

[沈下量]

| 事業区域名<br>計測地点名   | 10丁目(道路部)   |             |             |             |             |
|------------------|-------------|-------------|-------------|-------------|-------------|
|                  | 10E_1       | 10E_2       | 10E_3       | 10E_4       | 10D_1(ポンプ部) |
| 計測日              | 沈下量<br>(cm) | 沈下量<br>(cm) | 沈下量<br>(cm) | 沈下量<br>(cm) | 沈下量<br>(cm) |
| 2017/11/25 12:00 | 0.0         | 0.0         | 0.0         | 0.0         | 0.0         |
| 2017/12/25 12:00 | 0.1         | 0.1         | 0.1         | 0.1         | 0.1         |
| 2018/1/5 12:00   | 0.1         | 0.1         | 0.2         | 0.2         | 0.2         |
| 2018/1/12 12:00  | 0.1         | 0.1         | 0.2         | 0.2         | 0.2         |
| 2018/1/19 12:00  | 0.1         | 0.1         | 0.3         | 0.2         | 0.2         |
| 2018/1/26 12:00  | 0.1         | 0.2         | 0.3         | 0.2         | 0.2         |
| 2018/2/2 12:00   | 0.1         | 0.2         | 0.3         | 0.3         | 0.2         |
| 2018/2/9 12:00   | 0.2         | 0.2         | 0.3         | 0.3         | 0.3         |
| 2018/2/16 12:00  | 0.2         | 0.2         | 0.3         | 0.3         | 0.3         |
| 2018/2/23 12:00  | 0.2         | 0.3         | 0.4         | 0.3         | 0.3         |
| 2018/3/2 12:00   | 0.2         | 0.3         | 0.4         | 0.3         | 0.3         |
| 2018/3/9 12:00   | 0.2         | 0.3         | 0.4         | 0.3         | 0.3         |
| 2018/3/16 12:00  | 0.2         | 0.3         | 0.4         | 0.3         | 0.3         |
| 2018/3/23 12:00  | 0.2         | 0.4         | 0.4         | 0.3         | 0.3         |
| 2018/3/30 12:00  | 0.2         | 0.5         | 0.4         | 0.4         | 0.3         |
| 2018/4/6 12:00   | 0.2         | 0.5         | 0.4         | 0.3         | 0.3         |
| 2018/4/13 12:00  | 0.2         | 0.5         | 0.4         | 0.4         | 0.4         |
| 2018/4/20 12:00  | 0.2         | 0.6         | 0.4         | 0.4         | 0.4         |
| 2018/4/27 12:00  | 0.2         | 0.6         | 0.4         | 0.4         | 0.4         |
| 2018/5/4 12:00   | 0.2         | 0.6         | 0.4         | 0.4         | 0.4         |
| 2018/5/11 12:00  | 0.3         | 0.6         | 0.4         | 0.4         | 0.5         |
| 2018/5/18 12:00  | 0.3         | 0.6         | 0.4         | 0.4         | 0.4         |
| 2018/5/25 12:00  | 0.3         | 0.6         | 0.4         | 0.4         | 0.5         |
| 2018/6/1 12:00   | 0.3         | 0.6         | 0.5         | 0.5         | 0.5         |
| 2018/6/8 12:00   | 0.3         | 0.6         | 0.5         | 0.5         | 0.5         |
| 2018/6/15 12:00  | 0.3         | 0.7         | 0.5         | 0.5         | 0.5         |
| 2018/6/22 12:00  | 0.3         | 0.7         | 0.5         | 0.5         | 0.5         |
| 2018/6/29 12:00  | 0.4         | 0.7         | 0.6         | 0.6         | 0.6         |
| 2018/7/6 12:00   | 0.4         | 0.7         | 0.6         | 0.6         | 0.6         |
| 2018/7/13 12:00  | 0.4         | 0.8         | 0.6         | 0.7         | 0.6         |
| 2018/7/20 12:00  | 0.4         | 0.8         | 0.7         | 0.7         | 0.6         |
| 2018/7/27 12:00  | 0.5         | 0.8         | 0.7         | 0.7         | 0.7         |
| 2018/8/3 12:00   | 0.5         | 0.8         | 0.7         | 0.8         | 0.7         |
| 2018/8/10 12:00  | 0.5         | 0.8         | 0.8         | 0.8         | 0.7         |

[地下水位]

| 事業区域名                 | 11丁目(民地部)       |               |                 |               |
|-----------------------|-----------------|---------------|-----------------|---------------|
| 計測地点名                 | 11F_1           |               | 11F_2           |               |
| 計測地点地盤高<br>(T.P.m)    | 8.36            |               | 9.22            |               |
| 計測日                   | 地下水位<br>(T.P.m) | 地下水位<br>(GLm) | 地下水位<br>(T.P.m) | 地下水位<br>(GLm) |
| 2017/11/25 12:00      | 7.41            | -0.955        | 7.32            | -1.896        |
| 2017/12/25 12:00      | 6.86            | -1.499        | 6.64            | -2.582        |
| 2018/1/5 12:00        | 6.79            | -1.574        | 6.68            | -2.544        |
| 2018/1/12 12:00       | 6.75            | -1.607        | 6.68            | -2.538        |
| 2018/1/19 12:00       | 6.79            | -1.574        | 6.70            | -2.522        |
| 2018/1/26 12:00       | 6.85            | -1.510        | 6.76            | -2.456        |
| 2018/2/2 12:00        | 6.85            | -1.507        | 6.79            | -2.428        |
| 2018/2/9 12:00        | 6.89            | -1.475        | 6.83            | -2.393        |
| 2018/2/16 12:00       | 6.93            | -1.432        | 6.85            | -2.371        |
| 2018/2/23 12:00       | 6.94            | -1.421        | 6.86            | -2.360        |
| 2018/3/2 12:00        | 7.02            | -1.339        | 6.94            | -2.283        |
| 2018/3/9 12:00        | 7.44            | -0.919        | 7.36            | -1.864        |
| 2018/3/16 12:00       | 7.41            | -0.948        | 7.34            | -1.879        |
| 2018/3/23 12:00       | 7.57            | -0.786        | 7.54            | -1.683        |
| 2018/3/30 12:00       | 7.28            | -1.082        | 7.20            | -2.022        |
| 2018/4/6 12:00        | 7.37            | -0.987        | 7.27            | -1.952        |
| 2018/4/13 12:00       | 7.26            | -1.096        | 7.18            | -2.042        |
| 2018/4/20 12:00       | 7.22            | -1.137        | 7.12            | -2.097        |
| 2018/4/27 12:00       | 7.23            | -1.131        | 7.09            | -2.132        |
| 2018/5/4 12:00        | 7.20            | -1.160        | 7.06            | -2.155        |
| 2018/5/11 12:00       | 7.19            | -1.170        | 7.05            | -2.168        |
| 2018/5/18 12:00       | 7.17            | -1.185        | 7.03            | -2.187        |
| 2018/5/25 12:00       | 7.28            | -1.080        | 7.15            | -2.066        |
| 2018/6/1 12:00        | 7.07            | -1.291        | 6.90            | -2.322        |
| 2018/6/8 12:00        | 7.08            | -1.277        | 6.91            | -2.313        |
| 2018/6/15 12:00       | 6.89            | -1.469        | 6.60            | -2.617        |
| 2018/6/22 12:00       | 6.84            | -1.524        | 6.54            | -2.684        |
| 2018/6/29 12:00       | 6.76            | -1.597        | 6.52            | -2.703        |
| 2018/7/6 12:00        | 6.74            | -1.620        | 6.52            | -2.696        |
| 2018/7/13 12:00       | 6.77            | -1.586        | 6.52            | -2.697        |
| 2018/7/20 12:00       | 6.74            | -1.624        | 6.52            | -2.703        |
| 2018/7/27 12:00       | 6.73            | -1.628        | 6.50            | -2.717        |
| 2018/8/3 12:00        | 6.67            | -1.692        | 6.35            | -2.868        |
| 2018/8/10 12:00       | 6.64            | -1.721        | 6.33            | -2.895        |
| 1段階目水位<br>2018/2/24まで | 6.96            | -1.40         | 6.96            | -2.26         |
| 2段階目水位<br>2018/5/24まで | 6.80            | -1.57         | 6.80            | -2.43         |
| 最終水位<br>2018/8/24まで   | 6.63            | -1.73         | 6.63            | -2.59         |



[地下水位]

| 事業区域名<br>計測地点名     | 11丁目(道路部)       |               |                 |               |                 |               |                 |               |
|--------------------|-----------------|---------------|-----------------|---------------|-----------------|---------------|-----------------|---------------|
|                    | 11E_1           |               | 11E_2           |               | 11E_3           |               | 11E_4           |               |
| 計測地点地盤高<br>(T.P.m) | 8.42            |               | 8.44            |               | 8.73            |               | 8.71            |               |
| 計測日                | 地下水位<br>(T.P.m) | 地下水位<br>(GLm) | 地下水位<br>(T.P.m) | 地下水位<br>(GLm) | 地下水位<br>(T.P.m) | 地下水位<br>(GLm) | 地下水位<br>(T.P.m) | 地下水位<br>(GLm) |
| 2017/11/25 12:00   | 7.40            | -1.017        | 7.39            | -1.054        | 7.46            | -1.273        | 7.36            | -1.346        |
| 2017/12/25 12:00   | 6.71            | -1.711        | 6.71            | -1.733        | 6.76            | -1.967        | 6.67            | -2.036        |
| 2018/1/5 12:00     | 6.75            | -1.670        | 6.75            | -1.691        | 6.80            | -1.925        | 6.71            | -1.995        |
| 2018/1/12 12:00    | 6.76            | -1.656        | 6.77            | -1.674        | 6.82            | -1.911        | 6.73            | -1.981        |
| 2018/1/19 12:00    | 6.78            | -1.636        | 6.79            | -1.655        | 6.84            | -1.892        | 6.75            | -1.964        |
| 2018/1/26 12:00    | 6.85            | -1.573        | 6.85            | -1.589        | 6.90            | -1.830        | 6.81            | -1.903        |
| 2018/2/2 12:00     | 6.88            | -1.535        | 6.89            | -1.551        | 6.94            | -1.793        | 6.84            | -1.868        |
| 2018/2/9 12:00     | 6.92            | -1.499        | 6.93            | -1.514        | 6.98            | -1.754        | 6.88            | -1.830        |
| 2018/2/16 12:00    | 6.94            | -1.480        | 6.94            | -1.498        | 6.99            | -1.738        | 6.90            | -1.812        |
| 2018/2/23 12:00    | 6.95            | -1.474        | 6.95            | -1.490        | 7.00            | -1.730        | 6.91            | -1.803        |
| 2018/3/2 12:00     | 7.04            | -1.383        | 7.05            | -1.392        | 7.09            | -1.641        | 7.00            | -1.712        |
| 2018/3/9 12:00     | 7.38            | -1.042        | 7.38            | -1.056        | 7.43            | -1.301        | 7.33            | -1.378        |
| 2018/3/16 12:00    | 7.42            | -1.005        | 7.42            | -1.022        | 7.47            | -1.260        | 7.38            | -1.327        |
| 2018/3/23 12:00    | 7.59            | -0.831        | 7.59            | -0.846        | 7.65            | -1.084        | 7.56            | -1.151        |
| 2018/3/30 12:00    | 7.27            | -1.150        | 7.27            | -1.171        | 7.32            | -1.409        | 7.24            | -1.473        |
| 2018/4/6 12:00     | 7.33            | -1.090        | 7.32            | -1.115        | 7.38            | -1.350        | 7.30            | -1.412        |
| 2018/4/13 12:00    | 7.24            | -1.179        | 7.23            | -1.206        | 7.29            | -1.439        | 7.21            | -1.500        |
| 2018/4/20 12:00    | 7.19            | -1.229        | 7.19            | -1.251        | 7.24            | -1.488        | 7.16            | -1.547        |
| 2018/4/27 12:00    | 7.15            | -1.268        | 7.15            | -1.293        | 7.20            | -1.534        | 7.13            | -1.584        |
| 2018/5/4 12:00     | 7.13            | -1.293        | 7.12            | -1.317        | 7.17            | -1.561        | 7.10            | -1.607        |
| 2018/5/11 12:00    | 7.11            | -1.314        | 7.11            | -1.333        | 7.15            | -1.583        | 7.09            | -1.624        |
| 2018/5/18 12:00    | 7.07            | -1.352        | 7.07            | -1.370        | 7.11            | -1.621        | 7.05            | -1.662        |
| 2018/5/25 12:00    | 7.20            | -1.216        | 7.20            | -1.235        | 7.24            | -1.491        | 7.19            | -1.525        |
| 2018/6/1 12:00     | 6.93            | -1.485        | 6.94            | -1.500        | 6.97            | -1.761        | 6.92            | -1.791        |
| 2018/6/8 12:00     | 6.93            | -1.490        | 6.94            | -1.503        | 6.96            | -1.768        | 6.92            | -1.792        |
| 2018/6/15 12:00    | 6.55            | -1.867        | 6.56            | -1.875        | 6.59            | -2.145        | 6.54            | -2.171        |
| 2018/6/22 12:00    | 6.52            | -1.896        | 6.54            | -1.903        | 6.56            | -2.175        | 6.51            | -2.200        |
| 2018/6/29 12:00    | 6.54            | -1.878        | 6.55            | -1.888        | 6.57            | -2.162        | 6.53            | -2.182        |
| 2018/7/6 12:00     | 6.48            | -1.944        | 6.51            | -1.929        | 6.53            | -2.201        | 6.50            | -2.210        |
| 2018/7/13 12:00    | 6.47            | -1.949        | 6.50            | -1.936        | 6.52            | -2.212        | 6.49            | -2.221        |
| 2018/7/20 12:00    | 6.53            | -1.891        | 6.54            | -1.898        | 6.54            | -2.189        | 6.53            | -2.184        |
| 2018/7/27 12:00    | 6.51            | -1.915        | 6.52            | -1.923        | 6.51            | -2.221        | 6.50            | -2.206        |
| 2018/8/3 12:00     | 6.28            | -2.142        | 6.31            | -2.126        | 6.32            | -2.410        | 6.30            | -2.409        |
| 2018/8/10 12:00    | 6.27            | -2.148        | 6.29            | -2.150        | 6.28            | -2.446        | 6.28            | -2.425        |

[沈下量]

| 事業区域名<br>計測地点名   | 11丁目(民地部)   |             |
|------------------|-------------|-------------|
|                  | 11F_1       | 11F_2       |
| 計測日              | 沈下量<br>(cm) | 沈下量<br>(cm) |
| 2017/11/25 12:00 | 0.0         | 0.0         |
| 2017/12/25 12:00 | 0.2         | 0.2         |
| 2018/1/5 12:00   | 0.3         | 0.3         |
| 2018/1/12 12:00  | 0.3         | 0.3         |
| 2018/1/19 12:00  | 0.3         | 0.3         |
| 2018/1/26 12:00  | 0.3         | 0.3         |
| 2018/2/2 12:00   | 0.4         | 0.3         |
| 2018/2/9 12:00   | 0.4         | 0.3         |
| 2018/2/16 12:00  | 0.4         | 0.3         |
| 2018/2/23 12:00  | 0.4         | 0.4         |
| 2018/3/2 12:00   | 0.4         | 0.3         |
| 2018/3/9 12:00   | 0.4         | 0.3         |
| 2018/3/16 12:00  | 0.4         | 0.3         |
| 2018/3/23 12:00  | 0.4         | 0.3         |
| 2018/3/30 12:00  | 0.4         | 0.3         |
| 2018/4/6 12:00   | 0.4         | 0.3         |
| 2018/4/13 12:00  | 0.4         | 0.3         |
| 2018/4/20 12:00  | 0.4         | 0.3         |
| 2018/4/27 12:00  | 0.4         | 0.3         |
| 2018/5/4 12:00   | 0.4         | 0.3         |
| 2018/5/11 12:00  | 0.4         | 0.4         |
| 2018/5/18 12:00  | 0.4         | 0.4         |
| 2018/5/25 12:00  | 0.4         | 0.4         |
| 2018/6/1 12:00   | 0.5         | 0.4         |
| 2018/6/8 12:00   | 0.5         | 0.4         |
| 2018/6/15 12:00  | 0.5         | 0.5         |
| 2018/6/22 12:00  | 0.5         | 0.5         |
| 2018/6/29 12:00  | 0.6         | 0.5         |
| 2018/7/6 12:00   | 0.6         | 0.6         |
| 2018/7/13 12:00  | 0.6         | 0.6         |
| 2018/7/20 12:00  | 0.7         | 0.6         |
| 2018/7/27 12:00  | 0.7         | 0.7         |
| 2018/8/3 12:00   | 0.7         | 0.7         |
| 2018/8/10 12:00  | 0.8         | 0.7         |

[沈下量]

| 事業区域名<br>計測地点名   | 11丁目(道路部)   |             |             |             |             |
|------------------|-------------|-------------|-------------|-------------|-------------|
|                  | 11E_1       | 11E_2       | 11E_3       | 11E_4       | 11D_1(ポンプ部) |
| 計測日              | 沈下量<br>(cm) | 沈下量<br>(cm) | 沈下量<br>(cm) | 沈下量<br>(cm) | 沈下量<br>(cm) |
| 2017/11/25 12:00 | 0.0         | 0.0         | 0.0         | 0.0         | 0.0         |
| 2017/12/25 12:00 | 0.1         | 0.1         | 0.1         | 0.1         | 0.0         |
| 2018/1/5 12:00   | 0.2         | 0.1         | 0.1         | 0.1         | 0.1         |
| 2018/1/12 12:00  | 0.2         | 0.2         | 0.1         | 0.2         | 0.1         |
| 2018/1/19 12:00  | 0.2         | 0.2         | 0.2         | 0.2         | 0.1         |
| 2018/1/26 12:00  | 0.2         | 0.2         | 0.2         | 0.2         | 0.1         |
| 2018/2/2 12:00   | 0.2         | 0.3         | 0.2         | 0.2         | 0.1         |
| 2018/2/9 12:00   | 0.3         | 0.3         | 0.2         | 0.3         | 0.2         |
| 2018/2/16 12:00  | 0.3         | 0.3         | 0.2         | 0.3         | 0.2         |
| 2018/2/23 12:00  | 0.3         | 0.3         | 0.2         | 0.3         | 0.2         |
| 2018/3/2 12:00   | 0.3         | 0.3         | 0.2         | 0.3         | 0.2         |
| 2018/3/9 12:00   | 0.3         | 0.4         | 0.2         | 0.3         | 0.2         |
| 2018/3/16 12:00  | 0.3         | 0.3         | 0.2         | 0.3         | 0.2         |
| 2018/3/23 12:00  | 0.3         | 0.3         | 0.2         | 0.3         | 0.2         |
| 2018/3/30 12:00  | 0.3         | 0.3         | 0.2         | 0.3         | 0.3         |
| 2018/4/6 12:00   | 0.3         | 0.3         | 0.2         | 0.3         | 0.2         |
| 2018/4/13 12:00  | 0.3         | 0.3         | 0.2         | 0.3         | 0.3         |
| 2018/4/20 12:00  | 0.3         | 0.3         | 0.2         | 0.3         | 0.3         |
| 2018/4/27 12:00  | 0.3         | 0.3         | 0.2         | 0.3         | 0.3         |
| 2018/5/4 12:00   | 0.3         | 0.3         | 0.2         | 0.3         | 0.3         |
| 2018/5/11 12:00  | 0.3         | 0.4         | 0.2         | 0.3         | 0.3         |
| 2018/5/18 12:00  | 0.3         | 0.4         | 0.2         | 0.3         | 0.3         |
| 2018/5/25 12:00  | 0.3         | 0.4         | 0.2         | 0.4         | 0.3         |
| 2018/6/1 12:00   | 0.3         | 0.4         | 0.3         | 0.4         | 0.3         |
| 2018/6/8 12:00   | 0.3         | 0.4         | 0.3         | 0.4         | 0.4         |
| 2018/6/15 12:00  | 0.4         | 0.4         | 0.3         | 0.4         | 0.4         |
| 2018/6/22 12:00  | 0.4         | 0.5         | 0.3         | 0.5         | 0.4         |
| 2018/6/29 12:00  | 0.4         | 0.5         | 0.3         | 0.5         | 0.4         |
| 2018/7/6 12:00   | 0.4         | 0.5         | 0.3         | 0.6         | 0.4         |
| 2018/7/13 12:00  | 0.5         | 0.6         | 0.3         | 0.6         | 0.4         |
| 2018/7/20 12:00  | 0.5         | 0.6         | 0.4         | 0.6         | 0.4         |
| 2018/7/27 12:00  | 0.5         | 0.6         | 0.4         | 0.6         | 0.5         |
| 2018/8/3 12:00   | 0.5         | 0.7         | 0.4         | 0.7         | 0.5         |
| 2018/8/10 12:00  | 0.5         | 0.7         | 0.4         | 0.7         | 0.5         |

[地下水位]

| 事業区域名<br>計測地点名        | 7・12丁目(民地部)     |               | 12丁目(民地部)       |               |                 |               |
|-----------------------|-----------------|---------------|-----------------|---------------|-----------------|---------------|
|                       | 12F_1           |               | 12F_2           |               | 12F_3           |               |
| 計測地点地盤高<br>(T.P.m)    | 8.96            |               | 8.78            |               | 9.04            |               |
| 計測日                   | 地下水位<br>(T.P.m) | 地下水位<br>(GLm) | 地下水位<br>(T.P.m) | 地下水位<br>(GLm) | 地下水位<br>(T.P.m) | 地下水位<br>(GLm) |
| 2017/11/25 12:00      | 7.30            | -1.664        | 7.25            | -1.531        | 7.16            | -1.878        |
| 2017/12/25 12:00      | 6.75            | -2.208        | 6.23            | -2.546        | 6.18            | -2.858        |
| 2018/1/5 12:00        | 6.73            | -2.233        | 6.27            | -2.508        | 6.24            | -2.800        |
| 2018/1/12 12:00       | 6.71            | -2.248        | 6.31            | -2.467        | 6.27            | -2.773        |
| 2018/1/19 12:00       | 6.70            | -2.258        | 6.31            | -2.469        | 6.29            | -2.754        |
| 2018/1/26 12:00       | 6.73            | -2.231        | 6.35            | -2.430        | 6.32            | -2.716        |
| 2018/2/2 12:00        | 6.72            | -2.240        | 6.38            | -2.402        | 6.35            | -2.685        |
| 2018/2/9 12:00        | 6.72            | -2.236        | 6.42            | -2.362        | 6.39            | -2.646        |
| 2018/2/16 12:00       | 6.73            | -2.232        | 6.46            | -2.318        | 6.42            | -2.621        |
| 2018/2/23 12:00       | 6.69            | -2.270        | 6.46            | -2.322        | 6.44            | -2.603        |
| 2018/3/2 12:00        | 6.70            | -2.259        | 6.48            | -2.299        | 6.47            | -2.570        |
| 2018/3/9 12:00        | 8.77            | -0.187        | 8.49            | -0.288        | 6.54            | -2.503        |
| 2018/3/16 12:00       | 7.19            | -1.772        | 6.76            | -2.024        | 6.76            | -2.283        |
| 2018/3/23 12:00       | 8.57            | -0.386        | 7.15            | -1.634        | 6.86            | -2.176        |
| 2018/3/30 12:00       | 7.18            | -1.779        | 6.82            | -1.964        | 6.79            | -2.251        |
| 2018/4/6 12:00        | 7.19            | -1.770        | 6.91            | -1.874        | 6.89            | -2.154        |
| 2018/4/13 12:00       | 7.13            | -1.834        | 6.76            | -2.019        | 6.76            | -2.279        |
| 2018/4/20 12:00       | 7.14            | -1.817        | 6.69            | -2.093        | 6.68            | -2.363        |
| 2018/4/27 12:00       | 7.26            | -1.697        | 6.70            | -2.082        | 6.68            | -2.357        |
| 2018/5/4 12:00        | 7.20            | -1.763        | 6.68            | -2.096        | 6.67            | -2.365        |
| 2018/5/11 12:00       | 7.30            | -1.655        | 6.70            | -2.083        | 6.69            | -2.352        |
| 2018/5/18 12:00       | 7.30            | -1.665        | 6.70            | -2.077        | 6.69            | -2.349        |
| 2018/5/25 12:00       | 7.16            | -1.799        | 6.69            | -2.089        | 6.68            | -2.363        |
| 2018/6/1 12:00        | 6.90            | -2.057        | 6.29            | -2.495        | 6.29            | -2.752        |
| 2018/6/8 12:00        | 6.96            | -1.997        | 6.31            | -2.467        | 6.30            | -2.745        |
| 2018/6/15 12:00       | 6.79            | -2.166        | 6.22            | -2.562        | 6.21            | -2.834        |
| 2018/6/22 12:00       | 6.81            | -2.154        | 6.18            | -2.596        | 6.14            | -2.901        |
| 2018/6/29 12:00       | 6.79            | -2.173        | 6.15            | -2.635        | 6.13            | -2.913        |
| 2018/7/6 12:00        | 6.79            | -2.175        | 6.14            | -2.642        | 6.12            | -2.918        |
| 2018/7/13 12:00       | 6.80            | -2.157        | 6.15            | -2.630        | 6.12            | -2.921        |
| 2018/7/20 12:00       | 6.82            | -2.142        | 6.17            | -2.610        | 6.12            | -2.925        |
| 2018/7/27 12:00       | 6.83            | -2.129        | 6.13            | -2.652        | 6.12            | -2.924        |
| 2018/8/3 12:00        | 6.64            | -2.323        | 5.87            | -2.914        | 5.92            | -3.120        |
| 2018/8/10 12:00       | 6.62            | -2.344        | 5.79            | -2.994        | 5.92            | -3.118        |
| 1段階目水位<br>2018/2/24まで | 7.07            | -1.890        | 6.20            | -2.580        | 6.20            | -2.840        |
| 2段階目水位<br>2018/5/24まで | 6.86            | -2.100        | 6.12            | -2.660        | 6.12            | -2.920        |
| 最終水位<br>2018/8/24まで   | 6.65            | -2.320        | 6.04            | -2.740        | 6.04            | -3.000        |

[地下水位]

| 事業区域名<br>計測地点名<br>計測地点地盤高<br>(T.P.m) | 7・12丁目(道路部)     |               |                 |               | 12丁目(           |               |                 |               |                 |               |                 |               |
|--------------------------------------|-----------------|---------------|-----------------|---------------|-----------------|---------------|-----------------|---------------|-----------------|---------------|-----------------|---------------|
|                                      | 12E_1           |               | 12E_2           |               | 12E_3           |               | 12E_4           |               | 12E_5           |               | 12E_6           |               |
| 計測日                                  | 8.66            |               | 8.55            |               | 8.50            |               | 8.35            |               | 8.41            |               | 8.50            |               |
|                                      | 地下水位<br>(T.P.m) | 地下水位<br>(GLm) | 地下水位<br>(T.P.m) | 地下水位<br>(GLm) | 地下水位<br>(T.P.m) | 地下水位<br>(GLm) | 地下水位<br>(T.P.m) | 地下水位<br>(GLm) | 地下水位<br>(T.P.m) | 地下水位<br>(GLm) | 地下水位<br>(T.P.m) | 地下水位<br>(GLm) |
| 2017/11/25 12:00                     | 7.26            | -1.399        | 7.29            | -1.263        | 7.13            | -1.373        | 7.19            | -1.156        | 7.20            | -1.212        | 7.20            | -1.303        |
| 2017/12/25 12:00                     | 6.69            | -1.971        | 6.71            | -1.836        | 6.16            | -2.345        | 6.23            | -2.118        | 6.21            | -2.198        | 6.25            | -2.255        |
| 2018/1/5 12:00                       | 6.70            | -1.964        | 6.72            | -1.828        | 6.21            | -2.295        | 6.28            | -2.069        | 6.26            | -2.149        | 6.30            | -2.200        |
| 2018/1/12 12:00                      | 6.69            | -1.973        | 6.72            | -1.835        | 6.23            | -2.270        | 6.31            | -2.045        | 6.28            | -2.127        | 6.32            | -2.176        |
| 2018/1/19 12:00                      | 6.66            | -1.998        | 6.69            | -1.861        | 6.25            | -2.250        | 6.33            | -2.023        | 6.31            | -2.104        | 6.35            | -2.152        |
| 2018/1/26 12:00                      | 6.72            | -1.944        | 6.74            | -1.809        | 6.30            | -2.204        | 6.37            | -1.976        | 6.35            | -2.058        | 6.40            | -2.098        |
| 2018/2/2 12:00                       | 6.72            | -1.942        | 6.75            | -1.800        | 6.33            | -2.173        | 6.41            | -1.944        | 6.38            | -2.026        | 6.44            | -2.063        |
| 2018/2/9 12:00                       | 6.72            | -1.937        | 6.75            | -1.798        | 6.36            | -2.137        | 6.44            | -1.910        | 6.42            | -1.991        | 6.48            | -2.023        |
| 2018/2/16 12:00                      | 6.70            | -1.965        | 6.73            | -1.823        | 6.38            | -2.115        | 6.46            | -1.887        | 6.44            | -1.968        | 6.50            | -1.999        |
| 2018/2/23 12:00                      | 6.65            | -2.011        | 6.68            | -1.868        | 6.40            | -2.099        | 6.48            | -1.870        | 6.46            | -1.951        | 6.52            | -1.981        |
| 2018/3/2 12:00                       | 6.73            | -1.934        | 6.76            | -1.791        | 6.45            | -2.054        | 6.52            | -1.825        | 6.50            | -1.906        | 6.57            | -1.935        |
| 2018/3/9 12:00                       | 7.08            | -1.577        | 7.11            | -1.438        | 6.57            | -1.934        | 6.65            | -1.704        | 6.63            | -1.785        | 6.68            | -1.815        |
| 2018/3/16 12:00                      | 7.21            | -1.447        | 7.25            | -1.302        | 6.70            | -1.795        | 6.78            | -1.568        | 6.76            | -1.647        | 6.82            | -1.677        |
| 2018/3/23 12:00                      | 7.38            | -1.278        | 7.42            | -1.134        | 6.84            | -1.656        | 6.92            | -1.427        | 6.90            | -1.510        | 6.96            | -1.540        |
| 2018/3/30 12:00                      | 7.21            | -1.453        | 7.24            | -1.309        | 6.73            | -1.773        | 6.80            | -1.549        | 6.78            | -1.629        | 6.84            | -1.659        |
| 2018/4/6 12:00                       | 7.19            | -1.468        | 7.23            | -1.324        | 6.84            | -1.658        | 6.91            | -1.436        | 6.89            | -1.516        | 6.95            | -1.547        |
| 2018/4/13 12:00                      | 7.15            | -1.513        | 7.18            | -1.368        | 6.62            | -1.880        | 6.70            | -1.652        | 6.68            | -1.730        | 6.74            | -1.764        |
| 2018/4/20 12:00                      | 7.16            | -1.504        | 7.19            | -1.358        | 6.62            | -1.881        | 6.69            | -1.663        | 6.67            | -1.740        | 6.72            | -1.778        |
| 2018/4/27 12:00                      | 7.25            | -1.410        | 7.29            | -1.264        | 6.61            | -1.891        | 6.68            | -1.667        | 6.67            | -1.741        | 6.72            | -1.783        |
| 2018/5/4 12:00                       | 7.20            | -1.464        | 7.23            | -1.315        | 6.61            | -1.895        | 6.68            | -1.671        | 6.67            | -1.745        | 6.71            | -1.789        |
| 2018/5/11 12:00                      | 7.28            | -1.382        | 7.32            | -1.231        | 6.62            | -1.883        | 6.68            | -1.669        | 6.67            | -1.739        | 6.71            | -1.790        |
| 2018/5/18 12:00                      | 7.26            | -1.401        | 7.30            | -1.251        | 6.62            | -1.880        | 6.68            | -1.671        | 6.67            | -1.738        | 6.71            | -1.794        |
| 2018/5/25 12:00                      | 7.14            | -1.524        | 7.18            | -1.372        | 6.60            | -1.898        | 6.66            | -1.689        | 6.66            | -1.754        | 6.69            | -1.813        |
| 2018/6/1 12:00                       | 6.86            | -1.803        | 6.90            | -1.650        | 6.16            | -2.344        | 6.21            | -2.139        | 6.21            | -2.199        | 6.24            | -2.264        |
| 2018/6/8 12:00                       | 6.90            | -1.758        | 6.95            | -1.603        | 6.19            | -2.307        | 6.25            | -2.104        | 6.25            | -2.162        | 6.27            | -2.232        |
| 2018/6/15 12:00                      | 6.71            | -1.948        | 6.75            | -1.795        | 6.05            | -2.454        | 6.10            | -2.250        | 6.11            | -2.302        | 6.12            | -2.378        |
| 2018/6/22 12:00                      | 6.70            | -1.962        | 6.74            | -1.806        | 6.04            | -2.462        | 6.09            | -2.263        | 6.10            | -2.312        | 6.11            | -2.392        |
| 2018/6/29 12:00                      | 6.70            | -1.956        | 6.75            | -1.797        | 6.03            | -2.469        | 6.08            | -2.267        | 6.10            | -2.313        | 6.10            | -2.395        |
| 2018/7/6 12:00                       | 6.70            | -1.958        | 6.75            | -1.799        | 6.04            | -2.464        | 6.08            | -2.266        | 6.10            | -2.308        | 6.10            | -2.395        |
| 2018/7/13 12:00                      | 6.69            | -1.966        | 6.74            | -1.807        | 6.01            | -2.492        | 6.08            | -2.272        | 6.10            | -2.308        | 6.10            | -2.402        |
| 2018/7/20 12:00                      | 6.68            | -1.979        | 6.73            | -1.818        | 6.01            | -2.490        | 6.07            | -2.277        | 6.10            | -2.308        | 6.09            | -2.409        |
| 2018/7/27 12:00                      | 6.68            | -1.983        | 6.73            | -1.822        | 6.04            | -2.461        | 6.07            | -2.285        | 6.10            | -2.313        | 6.08            | -2.419        |
| 2018/8/3 12:00                       | 6.34            | -2.315        | 6.39            | -2.157        | 5.53            | -2.968        | 5.64            | -2.709        | 5.68            | -2.728        | 5.65            | -2.845        |
| 2018/8/10 12:00                      | 6.33            | -2.330        | 6.38            | -2.173        | 5.56            | -2.944        | 5.65            | -2.701        | 5.69            | -2.718        | 5.66            | -2.837        |

[地下水位]

| 事業区域名              | 道路部)            |               |                 |               |                 |               |                 |               |
|--------------------|-----------------|---------------|-----------------|---------------|-----------------|---------------|-----------------|---------------|
| 計測地点名              | 12E_7           |               | 12E_8           |               | 12E_9           |               | 12E_10          |               |
| 計測地点地盤高<br>(T.P.m) | 8.58            |               | 8.72            |               | 8.65            |               | 8.51            |               |
| 計測日                | 地下水位<br>(T.P.m) | 地下水位<br>(GLm) | 地下水位<br>(T.P.m) | 地下水位<br>(GLm) | 地下水位<br>(T.P.m) | 地下水位<br>(GLm) | 地下水位<br>(T.P.m) | 地下水位<br>(GLm) |
| 2017/11/25 12:00   | 7.22            | -1.357        | 7.14            | -1.584        | 7.16            | -1.493        | 7.20            | -1.310        |
| 2017/12/25 12:00   | 6.26            | -2.315        | 6.17            | -2.551        | 6.19            | -2.464        | 6.24            | -2.273        |
| 2018/1/5 12:00     | 6.31            | -2.265        | 6.22            | -2.501        | 6.24            | -2.413        | 6.29            | -2.222        |
| 2018/1/12 12:00    | 6.34            | -2.240        | 6.24            | -2.477        | 6.26            | -2.390        | 6.31            | -2.197        |
| 2018/1/19 12:00    | 6.36            | -2.217        | 6.27            | -2.455        | 6.28            | -2.368        | 6.33            | -2.177        |
| 2018/1/26 12:00    | 6.41            | -2.170        | 6.31            | -2.411        | 6.33            | -2.322        | 6.38            | -2.132        |
| 2018/2/2 12:00     | 6.44            | -2.139        | 6.34            | -2.381        | 6.36            | -2.291        | 6.41            | -2.101        |
| 2018/2/9 12:00     | 6.48            | -2.104        | 6.37            | -2.347        | 6.39            | -2.259        | 6.44            | -2.067        |
| 2018/2/16 12:00    | 6.50            | -2.080        | 6.40            | -2.324        | 6.41            | -2.238        | 6.47            | -2.044        |
| 2018/2/23 12:00    | 6.52            | -2.063        | 6.41            | -2.308        | 6.43            | -2.220        | 6.48            | -2.028        |
| 2018/3/2 12:00     | 6.56            | -2.015        | 6.46            | -2.263        | 6.47            | -2.180        | 6.53            | -1.983        |
| 2018/3/9 12:00     | 6.68            | -1.896        | 6.57            | -2.146        | 6.59            | -2.062        | 6.64            | -1.865        |
| 2018/3/16 12:00    | 6.82            | -1.758        | 6.71            | -2.008        | 6.73            | -1.922        | 6.78            | -1.725        |
| 2018/3/23 12:00    | 6.96            | -1.618        | 6.85            | -1.869        | 6.87            | -1.784        | 6.92            | -1.587        |
| 2018/3/30 12:00    | 6.84            | -1.738        | 6.73            | -1.988        | 6.75            | -1.904        | 6.80            | -1.706        |
| 2018/4/6 12:00     | 6.96            | -1.622        | 6.85            | -1.873        | 6.86            | -1.789        | 6.92            | -1.592        |
| 2018/4/13 12:00    | 6.74            | -1.836        | 6.63            | -2.090        | 6.65            | -2.003        | 6.70            | -1.805        |
| 2018/4/20 12:00    | 6.73            | -1.847        | 6.62            | -2.097        | 6.64            | -2.012        | 6.70            | -1.814        |
| 2018/4/27 12:00    | 6.73            | -1.850        | 6.62            | -2.100        | 6.63            | -2.015        | 6.69            | -1.818        |
| 2018/5/4 12:00     | 6.73            | -1.852        | 6.61            | -2.105        | 6.63            | -2.019        | 6.69            | -1.822        |
| 2018/5/11 12:00    | 6.73            | -1.848        | 6.62            | -2.100        | 6.64            | -2.013        | 6.69            | -1.817        |
| 2018/5/18 12:00    | 6.73            | -1.847        | 6.62            | -2.100        | 6.64            | -2.014        | 6.69            | -1.820        |
| 2018/5/25 12:00    | 6.72            | -1.863        | 6.60            | -2.118        | 6.62            | -2.032        | 6.67            | -1.836        |
| 2018/6/1 12:00     | 6.27            | -2.307        | 6.16            | -2.564        | 6.17            | -2.478        | 6.23            | -2.282        |
| 2018/6/8 12:00     | 6.31            | -2.269        | 6.19            | -2.528        | 6.21            | -2.441        | 6.26            | -2.247        |
| 2018/6/15 12:00    | 6.17            | -2.410        | 6.05            | -2.672        | 6.07            | -2.584        | 6.12            | -2.387        |
| 2018/6/22 12:00    | 6.16            | -2.420        | 6.04            | -2.681        | 6.06            | -2.595        | 6.11            | -2.397        |
| 2018/6/29 12:00    | 6.16            | -2.421        | 6.04            | -2.683        | 6.05            | -2.598        | 6.11            | -2.401        |
| 2018/7/6 12:00     | 6.16            | -2.415        | 6.04            | -2.681        | 6.06            | -2.595        | 6.12            | -2.394        |
| 2018/7/13 12:00    | 6.16            | -2.415        | 6.03            | -2.685        | 6.05            | -2.597        | 6.11            | -2.397        |
| 2018/7/20 12:00    | 6.17            | -2.415        | 6.03            | -2.688        | 6.05            | -2.599        | 6.12            | -2.395        |
| 2018/7/27 12:00    | 6.16            | -2.418        | 6.03            | -2.695        | 6.05            | -2.604        | 6.11            | -2.396        |
| 2018/8/3 12:00     | 5.74            | -2.837        | 5.61            | -3.108        | 5.63            | -3.025        | 5.70            | -2.814        |
| 2018/8/10 12:00    | 5.75            | -2.825        | 5.63            | -3.090        | 5.64            | -3.015        | 5.71            | -2.797        |

[沈下量]

| 事業区域名<br>計測地点名   | 7・12丁目(民地部) |             | 12丁目(民地部)   |             |
|------------------|-------------|-------------|-------------|-------------|
|                  | 12F_1       | 12F_2       | 12F_2       | 12F_3       |
| 計測日              | 沈下量<br>(cm) | 沈下量<br>(cm) | 沈下量<br>(cm) | 沈下量<br>(cm) |
| 2017/11/25 12:00 | 0.0         | 0.0         | 0.0         | 0.0         |
| 2017/12/25 12:00 | 0.1         | 0.2         | 0.2         | 0.1         |
| 2018/1/5 12:00   | 0.2         | 0.3         | 0.3         | 0.1         |
| 2018/1/12 12:00  | 0.2         | 0.3         | 0.3         | 0.1         |
| 2018/1/19 12:00  | 0.3         | 0.4         | 0.4         | 0.2         |
| 2018/1/26 12:00  | 0.3         | 0.4         | 0.4         | 0.2         |
| 2018/2/2 12:00   | 0.3         | 0.4         | 0.4         | 0.2         |
| 2018/2/9 12:00   | 0.3         | 0.4         | 0.4         | 0.2         |
| 2018/2/16 12:00  | 0.4         | 0.4         | 0.4         | 0.2         |
| 2018/2/23 12:00  | 0.4         | 0.5         | 0.5         | 0.3         |
| 2018/3/2 12:00   | 0.4         | 0.5         | 0.5         | 0.3         |
| 2018/3/9 12:00   | 0.4         | 0.5         | 0.5         | 0.3         |
| 2018/3/16 12:00  | 0.4         | 0.5         | 0.5         | 0.3         |
| 2018/3/23 12:00  | 0.4         | 0.5         | 0.5         | 0.3         |
| 2018/3/30 12:00  | 0.4         | 0.5         | 0.5         | 0.3         |
| 2018/4/6 12:00   | 0.4         | 0.5         | 0.5         | 0.3         |
| 2018/4/13 12:00  | 0.4         | 0.5         | 0.5         | 0.3         |
| 2018/4/20 12:00  | 0.4         | 0.5         | 0.5         | 0.3         |
| 2018/4/27 12:00  | 0.4         | 0.5         | 0.5         | 0.2         |
| 2018/5/4 12:00   | 0.4         | 0.5         | 0.5         | 0.2         |
| 2018/5/11 12:00  | 0.4         | 0.5         | 0.5         | 0.2         |
| 2018/5/18 12:00  | 0.4         | 0.5         | 0.5         | 0.2         |
| 2018/5/25 12:00  | 0.4         | 0.5         | 0.5         | 0.2         |
| 2018/6/1 12:00   | 0.5         | 0.5         | 0.5         | 0.2         |
| 2018/6/8 12:00   | 0.5         | 0.5         | 0.5         | 0.2         |
| 2018/6/15 12:00  | 0.5         | 0.6         | 0.6         | 0.2         |
| 2018/6/22 12:00  | 0.5         | 0.6         | 0.6         | 0.2         |
| 2018/6/29 12:00  | 0.6         | 0.6         | 0.6         | 0.2         |
| 2018/7/6 12:00   | 0.6         | 0.6         | 0.6         | 0.2         |
| 2018/7/13 12:00  | 0.6         | 0.6         | 0.6         | 0.2         |
| 2018/7/20 12:00  | 0.6         | 0.6         | 0.6         | 0.2         |
| 2018/7/27 12:00  | 0.7         | 0.7         | 0.7         | 0.2         |
| 2018/8/3 12:00   | 0.7         | 0.7         | 0.7         | 0.2         |
| 2018/8/10 12:00  | 0.7         | 0.7         | 0.7         | 0.2         |

[沈下量]

| 事業区域名<br>計測地点名   | 7・12丁目(道路部) |             |             |             |             | 12丁目(道路部)   |             |             |             |             |             |
|------------------|-------------|-------------|-------------|-------------|-------------|-------------|-------------|-------------|-------------|-------------|-------------|
|                  | 12E_1       | 12E_2       | 12E_3       | 12E_4       | 12E_5       | 12E_6       | 12E_7       | 12E_8       | 12E_9       | 12E_10      | 12D_1(ポンプ部) |
| 計測日              | 沈下量<br>(cm) | 沈下量<br>(cm) | 沈下量<br>(cm) | 沈下量<br>(cm) | 沈下量<br>(cm) | 沈下量<br>(cm) | 沈下量<br>(cm) | 沈下量<br>(cm) | 沈下量<br>(cm) | 沈下量<br>(cm) | 沈下量<br>(cm) |
| 2017/11/25 12:00 | 0.0         | 0.0         | 0.0         | 0.0         | 0.0         | 0.0         | 0.0         | 0.0         | 0.0         | 0.0         | 0.0         |
| 2017/12/25 12:00 | 0.1         | 0.1         | 0.1         | 0.2         | 0.2         | 0.2         | 0.3         | 0.1         | 0.2         | 0.2         | 0.1         |
| 2018/1/5 12:00   | 0.2         | 0.2         | 0.2         | 0.2         | 0.3         | 0.3         | 0.3         | 0.1         | 0.2         | 0.3         | 0.2         |
| 2018/1/12 12:00  | 0.2         | 0.2         | 0.2         | 0.3         | 0.3         | 0.3         | 0.4         | 0.1         | 0.3         | 0.3         | 0.2         |
| 2018/1/19 12:00  | 0.2         | 0.2         | 0.3         | 0.3         | 0.3         | 0.4         | 0.4         | 0.2         | 0.3         | 0.4         | 0.2         |
| 2018/1/26 12:00  | 0.2         | 0.2         | 0.3         | 0.3         | 0.4         | 0.4         | 0.4         | 0.2         | 0.3         | 0.4         | 0.2         |
| 2018/2/2 12:00   | 0.3         | 0.3         | 0.3         | 0.4         | 0.4         | 0.5         | 0.5         | 0.2         | 0.3         | 0.5         | 0.2         |
| 2018/2/9 12:00   | 0.3         | 0.3         | 0.3         | 0.4         | 0.4         | 0.5         | 0.5         | 0.2         | 0.4         | 0.5         | 0.3         |
| 2018/2/16 12:00  | 0.3         | 0.3         | 0.3         | 0.4         | 0.4         | 0.5         | 0.5         | 0.2         | 0.4         | 0.5         | 0.3         |
| 2018/2/23 12:00  | 0.3         | 0.3         | 0.4         | 0.4         | 0.4         | 0.6         | 0.5         | 0.2         | 0.4         | 0.5         | 0.3         |
| 2018/3/2 12:00   | 0.3         | 0.3         | 0.4         | 0.4         | 0.5         | 0.6         | 0.5         | 0.2         | 0.4         | 0.5         | 0.3         |
| 2018/3/9 12:00   | 0.4         | 0.4         | 0.4         | 0.4         | 0.5         | 0.6         | 0.5         | 0.3         | 0.4         | 0.5         | 0.4         |
| 2018/3/16 12:00  | 0.4         | 0.4         | 0.7         | 0.4         | 0.5         | 0.6         | 0.5         | 0.3         | 0.3         | 0.4         | 0.5         |
| 2018/3/23 12:00  | 0.3         | 0.3         | 0.7         | 0.4         | 0.5         | 0.6         | 0.5         | 0.3         | 0.3         | 0.4         | 0.5         |
| 2018/3/30 12:00  | 0.3         | 0.4         | 0.7         | 0.4         | 0.5         | 0.6         | 0.5         | 0.3         | 0.3         | 0.4         | 0.5         |
| 2018/4/6 12:00   | 0.3         | 0.3         | 0.7         | 0.4         | 0.5         | 0.6         | 0.5         | 0.2         | 0.3         | 0.4         | 0.5         |
| 2018/4/13 12:00  | 0.4         | 0.4         | 0.7         | 0.4         | 0.5         | 0.6         | 0.5         | 0.3         | 0.4         | 0.5         | 0.5         |
| 2018/4/20 12:00  | 0.4         | 0.4         | 0.7         | 0.4         | 0.5         | 0.6         | 0.5         | 0.3         | 0.4         | 0.5         | 0.5         |
| 2018/4/27 12:00  | 0.4         | 0.4         | 0.7         | 0.5         | 0.5         | 0.6         | 0.5         | 0.3         | 0.4         | 0.4         | 0.6         |
| 2018/5/4 12:00   | 0.4         | 0.4         | 0.7         | 0.5         | 0.5         | 0.7         | 0.5         | 0.3         | 0.4         | 0.4         | 0.6         |
| 2018/5/11 12:00  | 0.4         | 0.4         | 0.8         | 0.5         | 0.5         | 0.7         | 0.5         | 0.3         | 0.3         | 0.4         | 0.6         |
| 2018/5/18 12:00  | 0.4         | 0.4         | 0.8         | 0.5         | 0.5         | 0.7         | 0.5         | 0.3         | 0.3         | 0.4         | 0.6         |
| 2018/5/25 12:00  | 0.4         | 0.4         | 0.8         | 0.5         | 0.5         | 0.7         | 0.5         | 0.3         | 0.3         | 0.4         | 0.6         |
| 2018/6/1 12:00   | 0.4         | 0.4         | 0.8         | 0.5         | 0.6         | 0.7         | 0.6         | 0.3         | 0.3         | 0.4         | 0.6         |
| 2018/6/8 12:00   | 0.5         | 0.4         | 0.8         | 0.6         | 0.6         | 0.8         | 0.6         | 0.3         | 0.3         | 0.4         | 0.6         |
| 2018/6/15 12:00  | 0.5         | 0.4         | 0.8         | 0.6         | 0.6         | 0.8         | 0.6         | 0.3         | 0.4         | 0.4         | 0.6         |
| 2018/6/22 12:00  | 0.5         | 0.5         | 0.8         | 0.6         | 0.6         | 0.8         | 0.6         | 0.3         | 0.4         | 0.5         | 0.6         |
| 2018/6/29 12:00  | 0.5         | 0.5         | 0.8         | 0.6         | 0.7         | 0.9         | 0.6         | 0.3         | 0.4         | 0.5         | 0.7         |
| 2018/7/6 12:00   | 0.5         | 0.5         | 0.8         | 0.7         | 0.7         | 0.9         | 0.7         | 0.3         | 0.4         | 0.5         | 0.7         |
| 2018/7/13 12:00  | 0.6         | 0.5         | 0.9         | 0.7         | 0.7         | 1.0         | 0.7         | 0.3         | 0.4         | 0.5         | 0.7         |
| 2018/7/20 12:00  | 0.6         | 0.5         | 0.9         | 0.8         | 0.8         | 1.0         | 0.7         | 0.4         | 0.5         | 0.6         | 0.7         |
| 2018/7/27 12:00  | 0.6         | 0.6         | 0.9         | 0.8         | 0.8         | 1.0         | 0.7         | 0.4         | 0.5         | 0.6         | 0.8         |
| 2018/8/3 12:00   | 0.7         | 0.6         | 0.9         | 0.8         | 0.9         | 1.1         | 0.8         | 0.4         | 0.5         | 0.6         | 0.8         |
| 2018/8/10 12:00  | 0.7         | 0.6         | 1.0         | 0.9         | 0.9         | 1.2         | 0.8         | 0.4         | 0.5         | 0.6         | 0.9         |



[地下水位]

| 事業区域名<br>計測地点名<br>計測地点地盤高<br>(T.P.m) | 対策範囲外           |               |                 |               |                 |               |                 |               |                 |               |                 |               |
|--------------------------------------|-----------------|---------------|-----------------|---------------|-----------------|---------------|-----------------|---------------|-----------------|---------------|-----------------|---------------|
|                                      | 4B_1            |               | 5W_1            |               | 8W_2            |               | 9B_1            |               | 10B_1           |               | 11B_1           |               |
| 計測日                                  | 9.16            |               | 9.26            |               | 9.14            |               | 8.73            |               | 9.28            |               | 8.65            |               |
|                                      | 地下水位<br>(T.P.m) | 地下水位<br>(GLm) | 地下水位<br>(T.P.m) | 地下水位<br>(GLm) | 地下水位<br>(T.P.m) | 地下水位<br>(GLm) | 地下水位<br>(T.P.m) | 地下水位<br>(GLm) | 地下水位<br>(T.P.m) | 地下水位<br>(GLm) | 地下水位<br>(T.P.m) | 地下水位<br>(GLm) |
| 2017/11/25 12:00                     | 8.22            | -0.936        | 8.67            | -0.589        | 8.61            | -0.527        | 7.67            | -1.061        | 7.29            | -1.992        | 6.99            | -1.662        |
| 2017/12/25 12:00                     | 7.91            | -1.255        | 8.51            | -0.750        | 8.37            | -0.768        | 7.23            | -1.501        | 7.08            | -2.198        | 6.73            | -1.918        |
| 2018/1/5 12:00                       | 7.78            | -1.377        | 8.38            | -0.878        | 8.31            | -0.828        | 7.08            | -1.655        | 6.98            | -2.299        | 6.60            | -2.055        |
| 2018/1/12 12:00                      | 7.73            | -1.428        | 8.35            | -0.908        | 8.28            | -0.863        | 6.99            | -1.735        | 6.95            | -2.334        | 6.54            | -2.115        |
| 2018/1/19 12:00                      | 7.70            | -1.464        | 8.39            | -0.870        | 8.25            | -0.893        | 6.96            | -1.767        | 6.94            | -2.339        | 6.52            | -2.134        |
| 2018/1/26 12:00                      | 7.82            | -1.339        | 8.56            | -0.698        | 8.24            | -0.904        | 7.23            | -1.500        | 7.09            | -2.186        | 6.75            | -1.900        |
| 2018/2/2 12:00                       | 7.86            | -1.300        | 8.73            | -0.535        | 8.30            | -0.840        | 7.25            | -1.476        | 7.05            | -2.232        | 6.68            | -1.970        |
| 2018/2/9 12:00                       | 7.78            | -1.384        | 8.61            | -0.649        | 8.37            | -0.767        | 7.28            | -1.447        | 7.06            | -2.221        | 6.85            | -1.803        |
| 2018/2/16 12:00                      | 7.74            | -1.420        | 8.53            | -0.727        | 8.33            | -0.810        | 7.19            | -1.538        | 7.00            | -2.276        | 6.81            | -1.841        |
| 2018/2/23 12:00                      | 7.69            | -1.471        | 8.47            | -0.794        | 8.28            | -0.863        | 7.06            | -1.666        | 6.94            | -2.341        | 6.73            | -1.925        |
| 2018/3/2 12:00                       | 7.82            | -1.340        | 8.75            | -0.515        | 8.46            | -0.676        | 7.35            | -1.383        | 7.09            | -2.190        | 7.07            | -1.582        |
| 2018/3/9 12:00                       | 8.22            | -0.944        | 8.94            | -0.319        | 9.09            | -0.047        | 8.28            | -0.447        | 7.25            | -2.034        | 7.59            | -1.057        |
| 2018/3/16 12:00                      | 8.24            | -0.919        | 8.68            | -0.581        | 8.84            | -0.302        | 7.91            | -0.822        | 7.36            | -1.916        | 7.29            | -1.365        |
| 2018/3/23 12:00                      | 8.40            | -0.757        | 8.76            | -0.496        | 8.99            | -0.154        | 8.24            | -0.491        | 7.45            | -1.828        | 7.41            | -1.242        |
| 2018/3/30 12:00                      | 8.26            | -0.898        | 8.62            | -0.637        | 8.70            | -0.437        | 7.88            | -0.852        | 7.34            | -1.943        | 7.17            | -1.485        |
| 2018/4/6 12:00                       | 8.18            | -0.977        | 8.50            | -0.762        | 8.52            | -0.623        | 7.72            | -1.008        | 7.28            | -2.004        | 7.13            | -1.517        |
| 2018/4/13 12:00                      | 8.06            | -1.095        | 8.35            | -0.906        | 8.38            | -0.764        | 7.55            | -1.181        | 7.16            | -2.120        | 7.02            | -1.628        |
| 2018/4/20 12:00                      | 8.06            | -1.095        | 8.44            | -0.818        | 8.30            | -0.835        | 7.55            | -1.179        | 7.23            | -2.048        | 7.04            | -1.614        |
| 2018/4/27 12:00                      | 8.27            | -0.893        | 8.72            | -0.536        | 8.41            | -0.734        | 7.83            | -0.903        | 7.38            | -1.905        | 7.35            | -1.300        |
| 2018/5/4 12:00                       | 8.26            | -0.904        | 8.61            | -0.651        | 8.28            | -0.856        | 7.72            | -1.013        | 7.38            | -1.895        | 7.22            | -1.434        |
| 2018/5/11 12:00                      | 8.40            | -0.763        | 8.73            | -0.525        | 8.40            | -0.744        | 7.96            | -0.772        | 7.40            | -1.876        | 7.34            | -1.311        |
| 2018/5/18 12:00                      | 8.40            | -0.762        | 8.61            | -0.650        | 8.41            | -0.732        | 7.88            | -0.851        | 7.45            | -1.830        | 7.23            | -1.424        |
| 2018/5/25 12:00                      | 8.33            | -0.828        | 8.49            | -0.766        | 8.30            | -0.843        | 7.78            | -0.948        | 7.42            | -1.862        | 7.18            | -1.469        |
| 2018/6/1 12:00                       | 8.34            | -0.824        | 8.62            | -0.638        | 8.22            | -0.916        | 7.76            | -0.969        | 7.41            | -1.875        | 7.27            | -1.385        |
| 2018/6/8 12:00                       | 8.28            | -0.879        | 8.48            | -0.780        | 8.16            | -0.977        | 7.62            | -1.114        | 7.36            | -1.923        | 7.18            | -1.473        |
| 2018/6/15 12:00                      | 8.31            | -0.851        | 8.64            | -0.622        | 8.14            | -0.997        | 7.75            | -0.979        | 7.36            | -1.916        | 7.23            | -1.419        |
| 2018/6/22 12:00                      | 8.35            | -0.806        | 8.73            | -0.528        | 8.29            | -0.848        | 7.92            | -0.808        | 7.41            | -1.872        | 7.29            | -1.359        |
| 2018/6/29 12:00                      | 8.25            | -0.911        | 8.53            | -0.726        | 8.26            | -0.881        | 7.74            | -0.993        | 7.34            | -1.937        | 7.17            | -1.478        |
| 2018/7/6 12:00                       | 8.25            | -0.911        | 8.43            | -0.830        | 8.18            | -0.959        | 7.67            | -1.062        | 7.33            | -1.948        | 7.13            | -1.522        |
| 2018/7/13 12:00                      | 8.22            | -0.938        | 8.41            | -0.849        | 8.12            | -1.017        | 7.67            | -1.064        | 7.35            | -1.926        | 7.19            | -1.465        |
| 2018/7/20 12:00                      | 8.14            | -1.021        | 8.18            | -1.081        | 8.05            | -1.086        | 7.46            | -1.266        | 7.32            | -1.957        | 7.10            | -1.550        |
| 2018/7/27 12:00                      | 8.08            | -1.083        | 8.03            | -1.230        | 7.98            | -1.156        | 7.34            | -1.391        | 7.32            | -1.959        | 7.04            | -1.607        |
| 2018/8/3 12:00                       | 8.19            | -0.970        | 8.34            | -0.923        | 7.96            | -1.176        | 7.55            | -1.178        | 7.37            | -1.913        | 7.22            | -1.427        |
| 2018/8/10 12:00                      | 8.18            | -0.978        | 8.42            | -0.841        | 7.94            | -1.203        | 7.58            | -1.147        | 7.38            | -1.905        | 7.24            | -1.411        |

[地下水位]

| 事業区域名              | 11B_2           |               | 12W_6           |               | 12W_8           |               |
|--------------------|-----------------|---------------|-----------------|---------------|-----------------|---------------|
| 計測地点名              |                 |               |                 |               |                 |               |
| 計測地点地盤高<br>(T.P.m) | 8.38            |               | 8.71            |               | 8.43            |               |
| 計測日                | 地下水位<br>(T.P.m) | 地下水位<br>(GLm) | 地下水位<br>(T.P.m) | 地下水位<br>(GLm) | 地下水位<br>(T.P.m) | 地下水位<br>(GLm) |
| 2017/11/25 12:00   | 6.13            | -2.250        | 7.61            | -1.105        | 7.12            | -1.310        |
| 2017/12/25 12:00   | 6.08            | -2.300        | 7.32            | -1.394        | 6.88            | -1.549        |
| 2018/1/5 12:00     | 6.07            | -2.308        | 7.24            | -1.468        | 6.79            | -1.638        |
| 2018/1/12 12:00    | 6.07            | -2.312        | 7.21            | -1.498        | 6.75            | -1.679        |
| 2018/1/19 12:00    | 6.07            | -2.308        | 7.18            | -1.526        | 6.75            | -1.678        |
| 2018/1/26 12:00    | 6.09            | -2.291        | 7.23            | -1.479        | 6.83            | -1.603        |
| 2018/2/2 12:00     | 6.10            | -2.281        | 7.23            | -1.479        | 6.81            | -1.621        |
| 2018/2/9 12:00     | 6.09            | -2.292        | 7.28            | -1.427        | 6.78            | -1.649        |
| 2018/2/16 12:00    | 6.08            | -2.296        | 7.26            | -1.449        | 6.75            | -1.681        |
| 2018/2/23 12:00    | 6.09            | -2.289        | 7.22            | -1.492        | 6.73            | -1.705        |
| 2018/3/2 12:00     | 6.12            | -2.260        | 7.45            | -1.259        | 6.83            | -1.598        |
| 2018/3/9 12:00     | 6.39            | -1.985        | 8.02            | -0.692        | 7.64            | -0.789        |
| 2018/3/16 12:00    | 6.22            | -2.158        | 7.77            | -0.943        | 7.17            | -1.264        |
| 2018/3/23 12:00    | 6.33            | -2.048        | 7.89            | -0.818        | 7.38            | -1.052        |
| 2018/3/30 12:00    | 6.23            | -2.152        | 7.74            | -0.969        | 7.17            | -1.259        |
| 2018/4/6 12:00     | 6.23            | -2.150        | 7.67            | -1.039        | 7.11            | -1.319        |
| 2018/4/13 12:00    | 6.15            | -2.230        | 7.55            | -1.164        | 7.03            | -1.403        |
| 2018/4/20 12:00    | 6.19            | -2.192        | 7.52            | -1.193        | 7.02            | -1.409        |
| 2018/4/27 12:00    | 6.30            | -2.083        | 7.72            | -0.988        | 7.14            | -1.293        |
| 2018/5/4 12:00     | 6.31            | -2.068        | 7.62            | -1.093        | 7.10            | -1.334        |
| 2018/5/11 12:00    | 6.43            | -1.946        | 7.81            | -0.898        | 7.23            | -1.198        |
| 2018/5/18 12:00    | 6.35            | -2.025        | 7.78            | -0.930        | 7.19            | -1.237        |
| 2018/5/25 12:00    | 6.33            | -2.050        | 7.67            | -1.044        | 7.13            | -1.300        |
| 2018/6/1 12:00     | 6.41            | -1.974        | 7.64            | -1.066        | 7.12            | -1.310        |
| 2018/6/8 12:00     | 6.26            | -2.122        | 7.55            | -1.164        | 7.07            | -1.358        |
| 2018/6/15 12:00    | 6.28            | -2.100        | 7.55            | -1.164        | 7.11            | -1.325        |
| 2018/6/22 12:00    | 6.41            | -1.973        | 7.71            | -1.004        | 7.15            | -1.276        |
| 2018/6/29 12:00    | 6.22            | -2.164        | 7.55            | -1.162        | 7.08            | -1.353        |
| 2018/7/6 12:00     | 6.27            | -2.109        | 7.51            | -1.195        | 7.09            | -1.338        |
| 2018/7/13 12:00    | 6.23            | -2.146        | 7.44            | -1.268        | 7.03            | -1.403        |
| 2018/7/20 12:00    | 6.24            | -2.144        | 7.37            | -1.339        | 6.95            | -1.477        |
| 2018/7/27 12:00    | 6.25            | -2.129        | 7.33            | -1.382        | 6.90            | -1.528        |
| 2018/8/3 12:00     | 6.22            | -2.163        | 7.38            | -1.333        | 7.01            | -1.420        |
| 2018/8/10 12:00    | 6.22            | -2.165        | 7.35            | -1.365        | 7.01            | -1.425        |