

目 次

1. 概況	1
2. 観測状況一覧	2
3. 地下水位・沈下量・降水量グラフ（4丁目）	3
地下水位・沈下量・降水量グラフ（6丁目）	4
地下水位・沈下量・降水量グラフ（7・12丁目）	5
地下水位・沈下量・降水量グラフ（8丁目）	6
地下水位・沈下量・降水量グラフ（10丁目）	7
地下水位・沈下量・降水量グラフ（11丁目）	8
地下水位・沈下量・降水量グラフ（12丁目）	9
地下水位・降水量グラフ（対象範囲外）	10
4. 地下水位・沈下量データ（4丁目）	11
地下水位・沈下量データ（6丁目）	15
地下水位・沈下量データ（7・12丁目）	19
地下水位・沈下量データ（8丁目）	23
地下水位・沈下量データ（10丁目）	27
地下水位・沈下量データ（11丁目）	31
地下水位・沈下量データ（12丁目）	35
地下水位データ（対象範囲外）	41

[概況]

[測定日] 2018年11月2日

[概況]

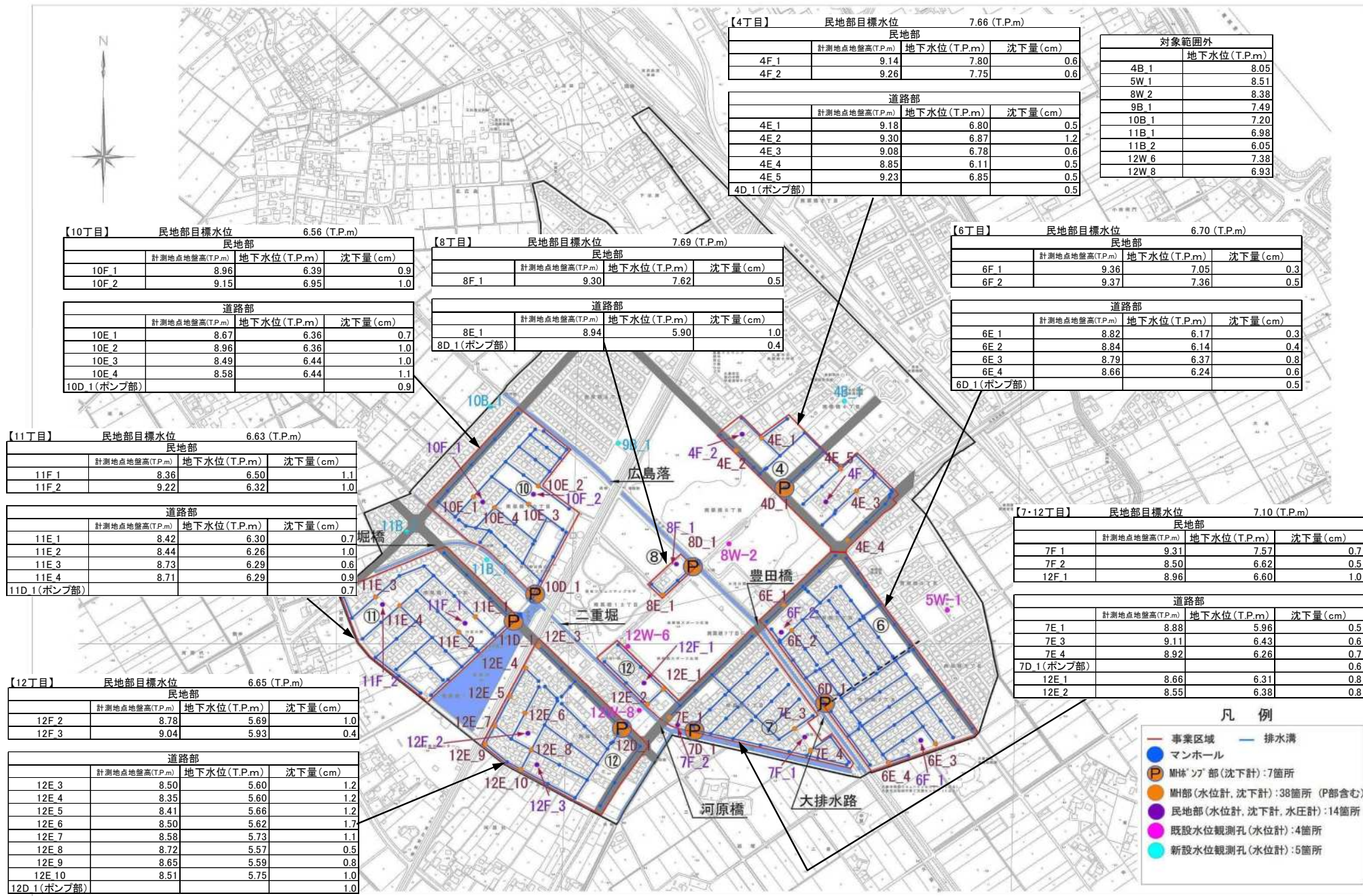
水位につきましては、降雨の影響が少なくなったため、前回計測値から低下傾向にあります。8/24時点で液状化対策として必要な水位までの低下が確認できていることから、時間経過により所定水位まで低下していくものと考えております。沈下に対しても第17回委員会において設定された一次管理値沈下量4cm以下の状態であり、問題はありません。

なお、効果影響確認の判断は次回委員会にて審議いただきます。
引き続き、水位状況、沈下状況を監視してまいります。

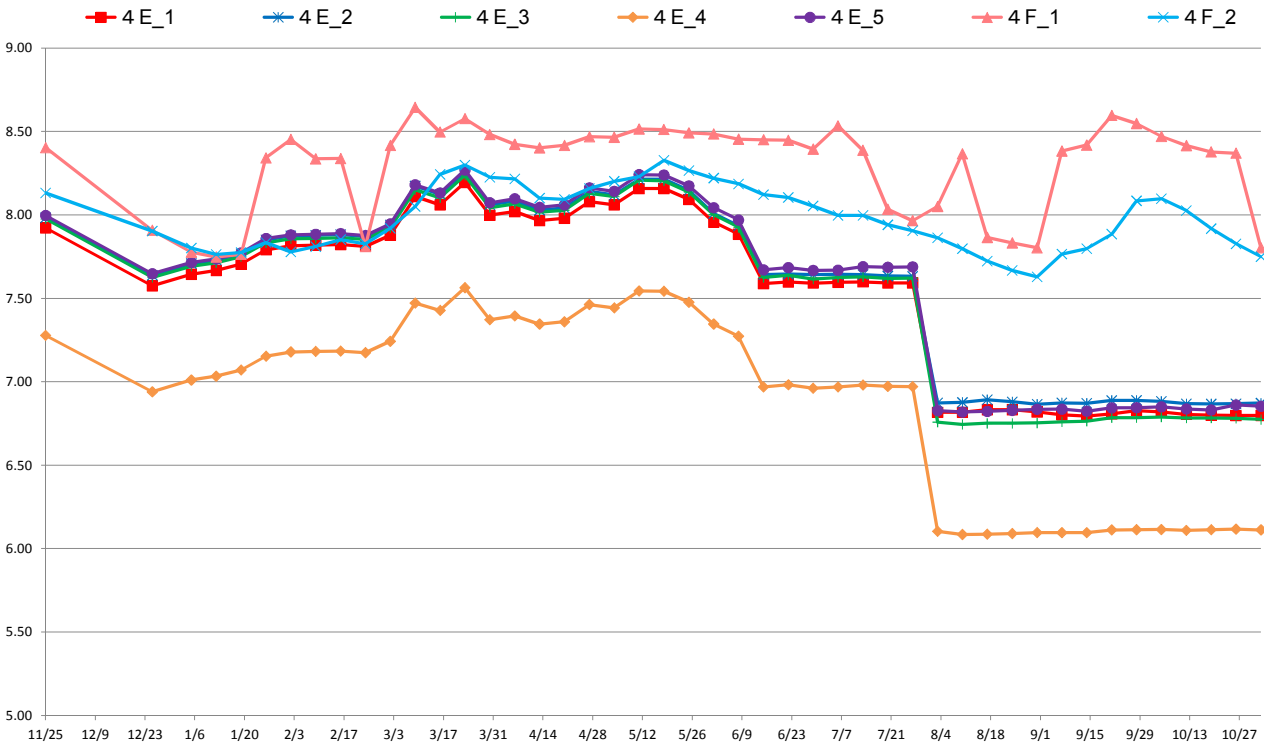
※地下水位の測定値はGL表示値とT.P.表示値があります（表示単位：m）。

- GLとはGround Level（地盤面）の略です。GL-1.00mは、地盤面から1m下がった高さを表します。
- T.P.とはTokyo Peil（東京湾平均海水面）の略です。東京湾の平均海水面を0mとした時の高さを表し、測量法にて定めている高さの基準になります。

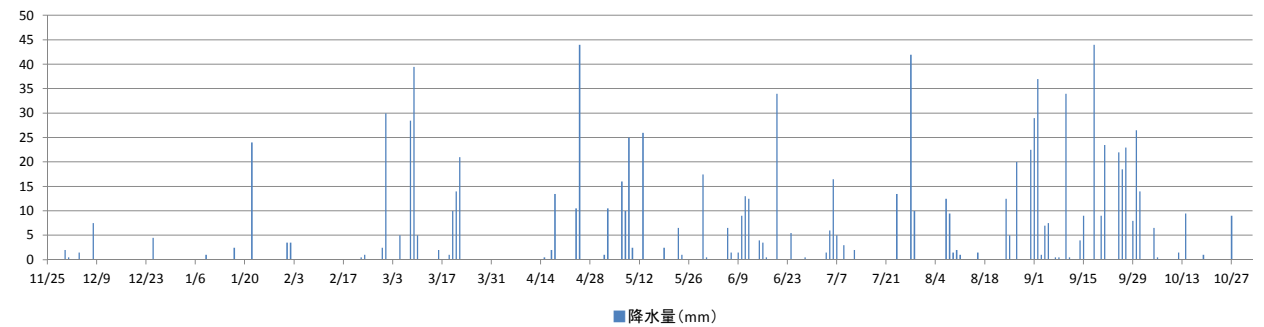
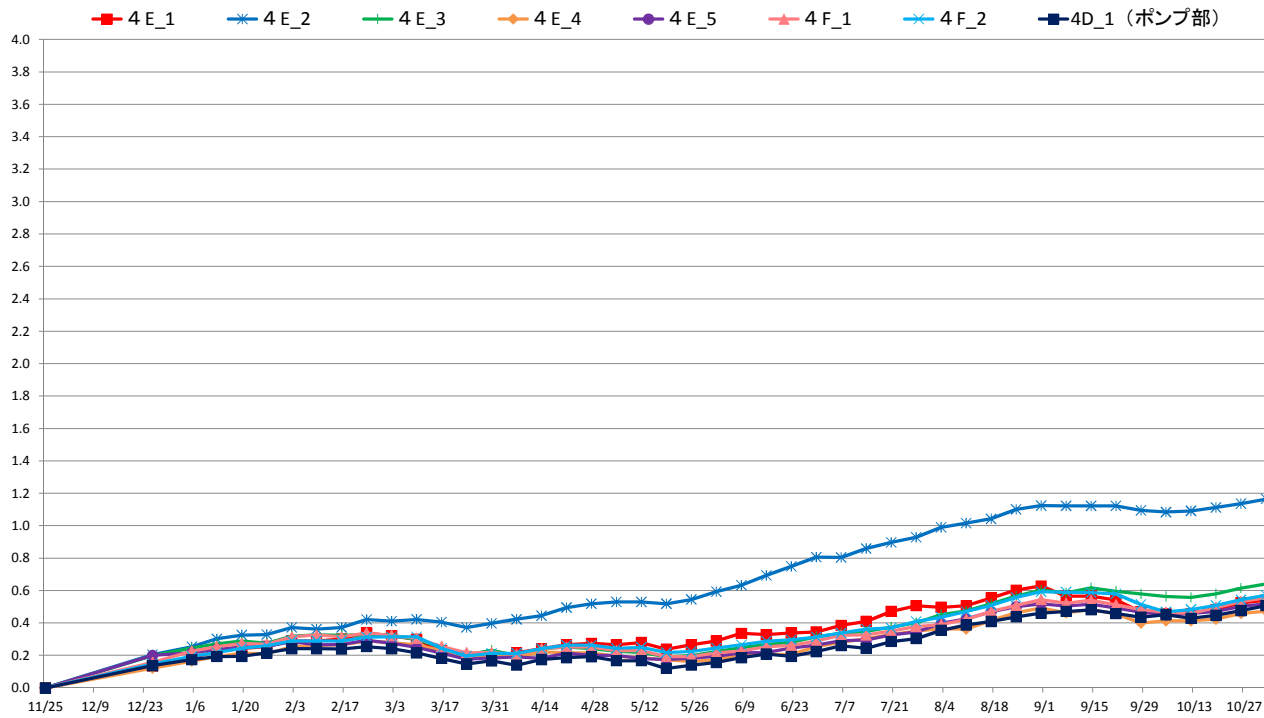
※降水量データは、気象庁（久喜）観測データを示す。



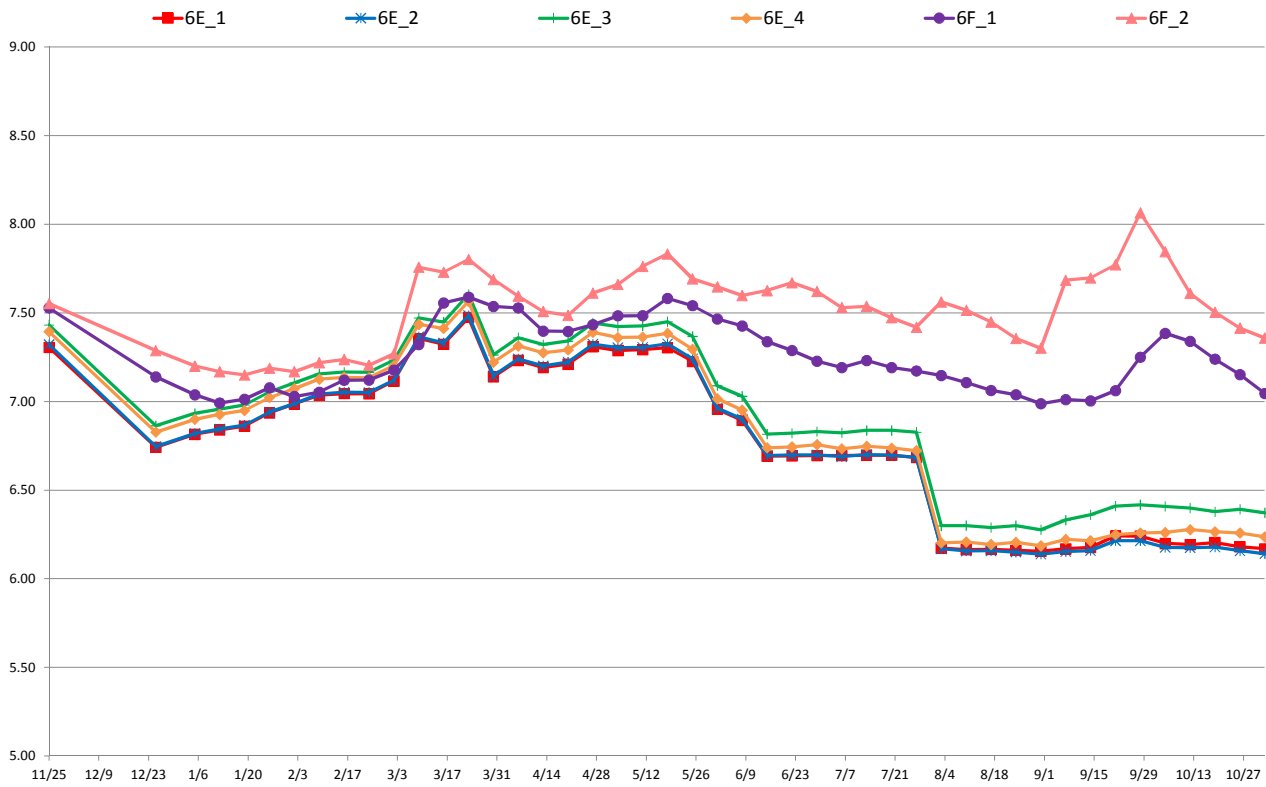
4丁目水位 (T.P+m)



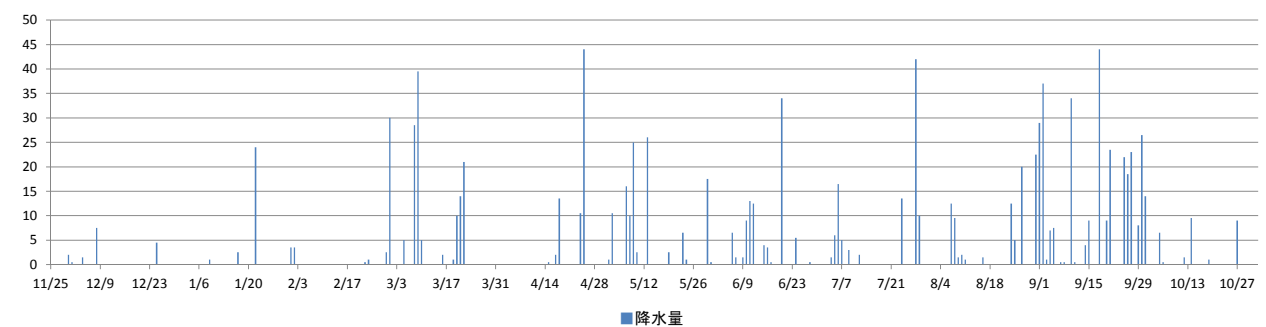
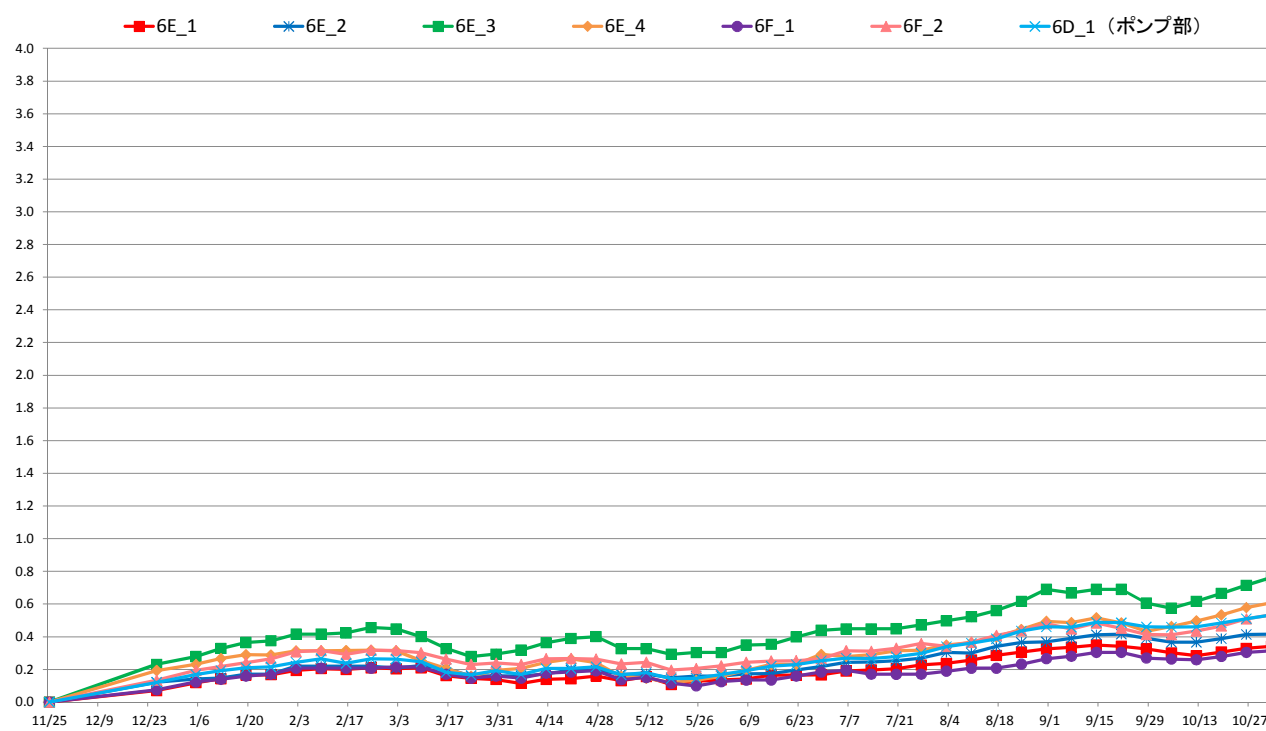
4丁目沈下 (G.L-cm)



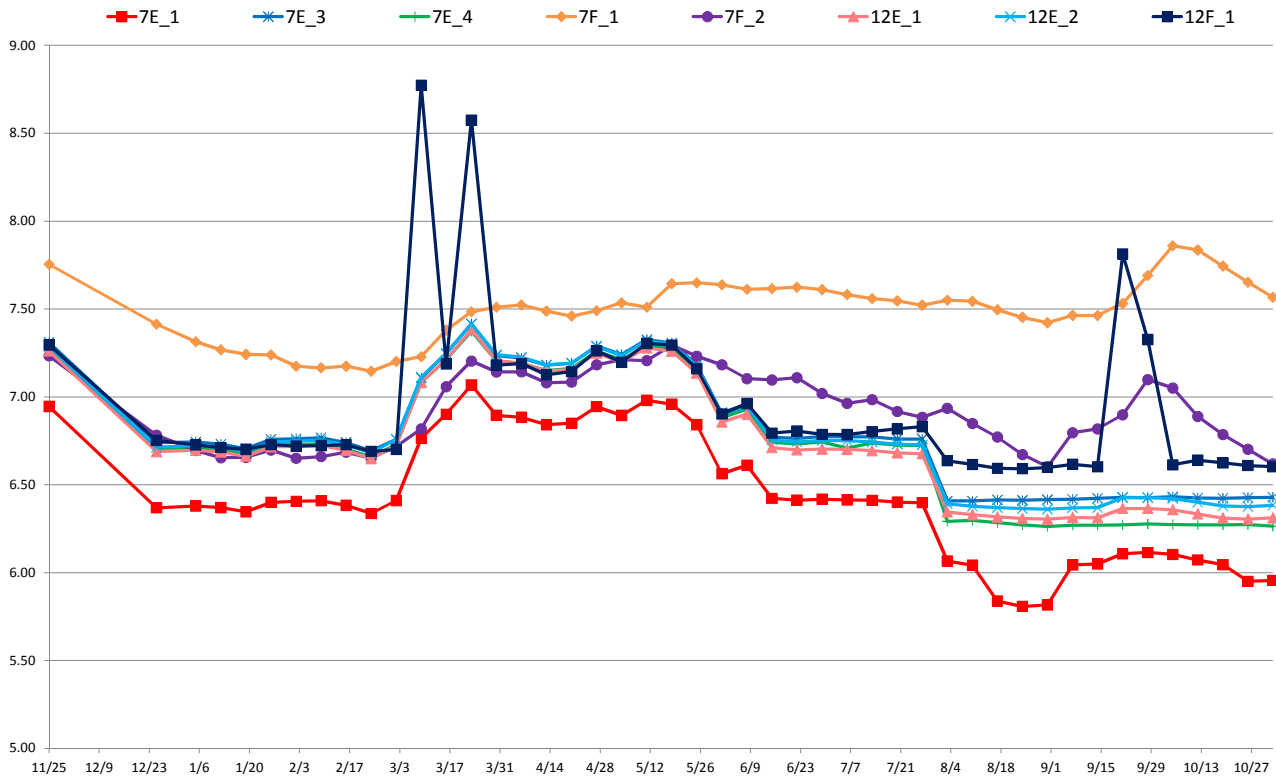
6丁目水位 (T.P+m)



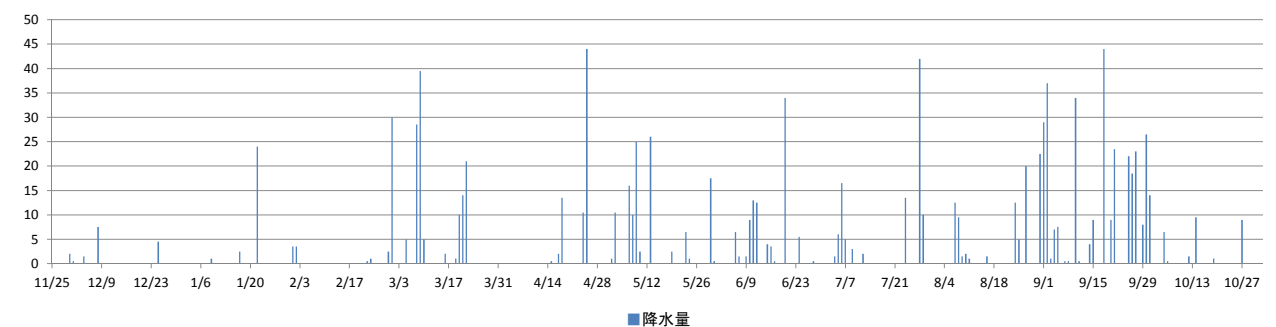
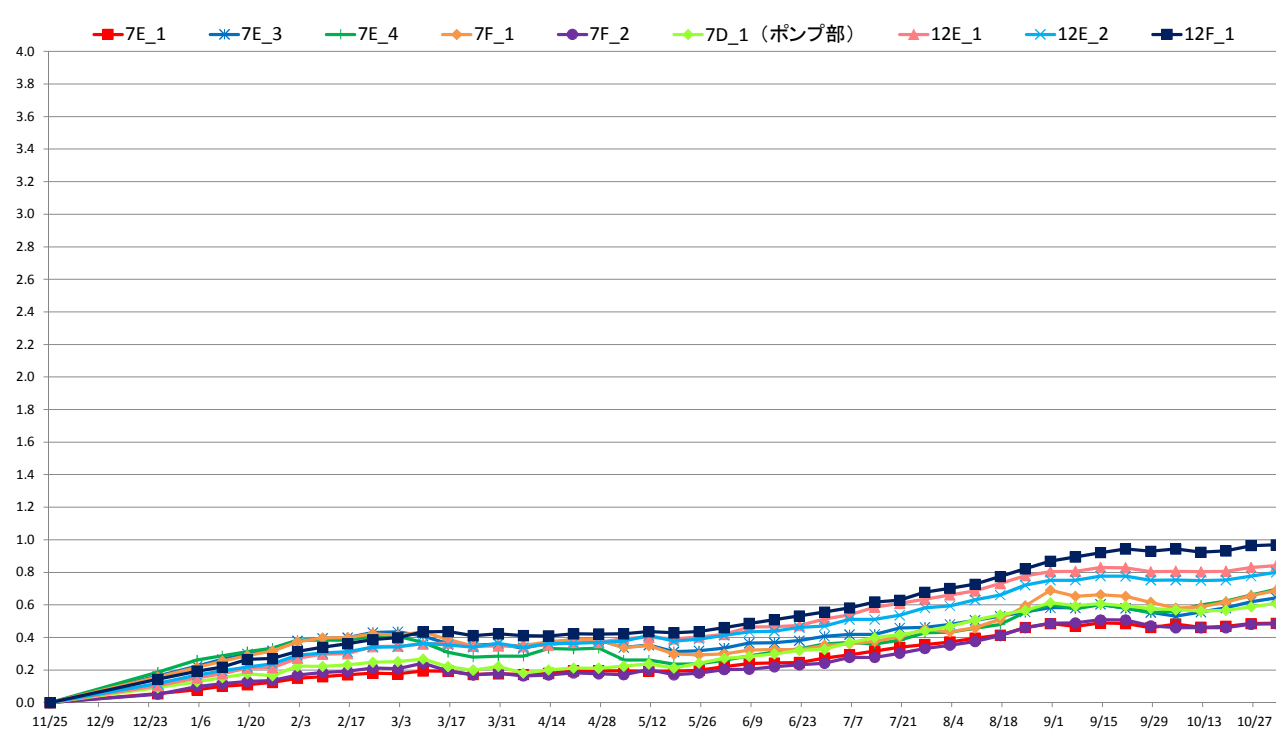
6丁目沈下 (G.L-cm)



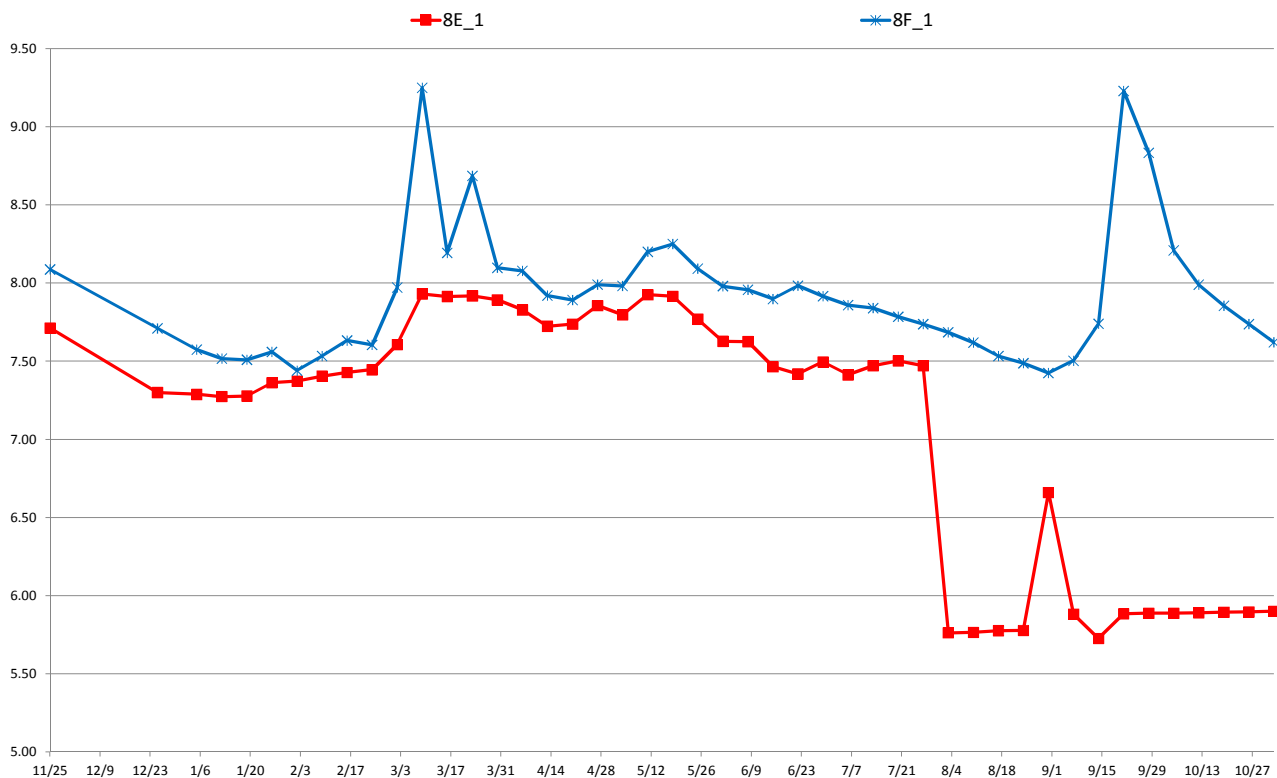
7・12丁目水位 (T.P+m)



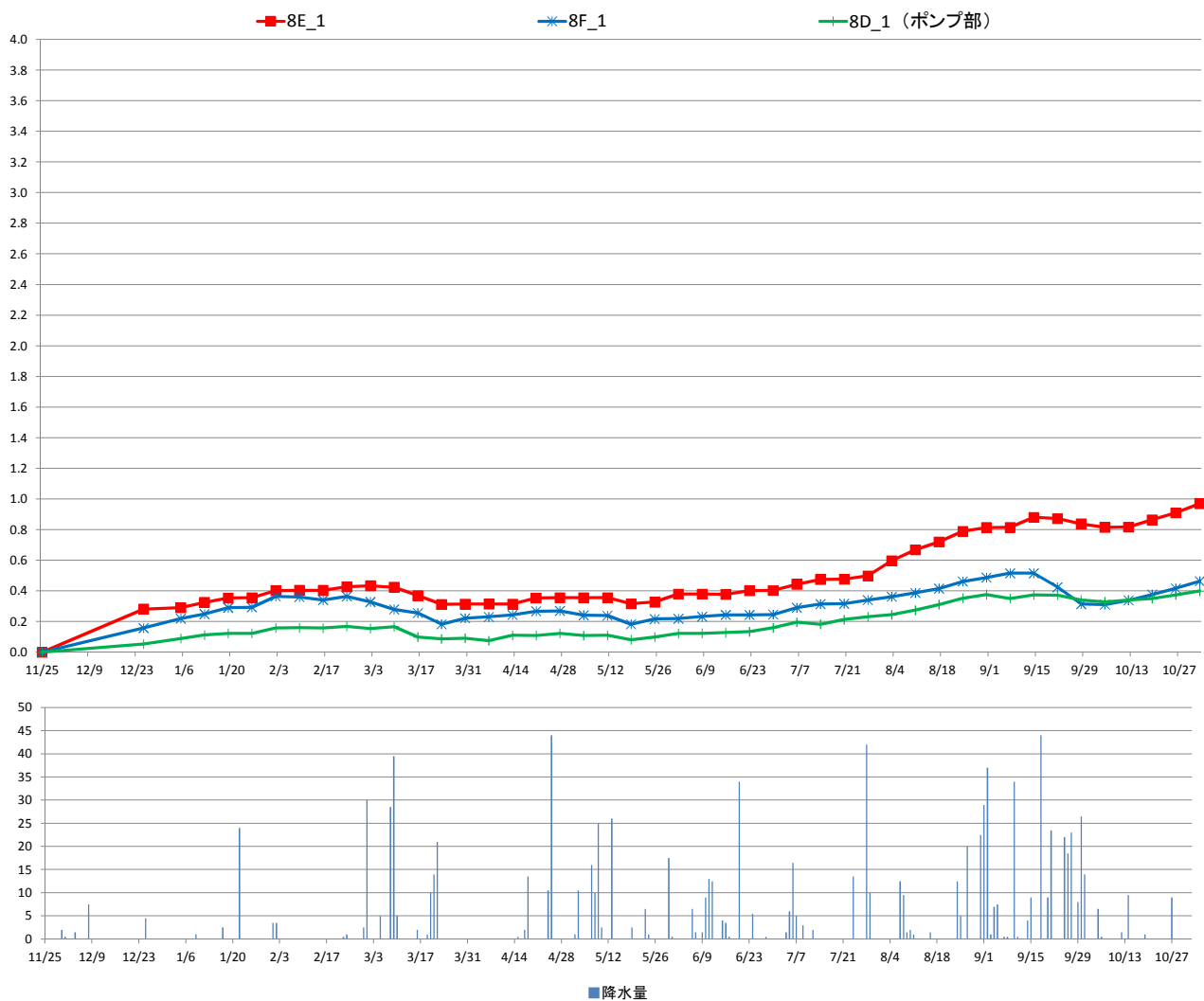
7・12丁目沈下 (G.L-cm)



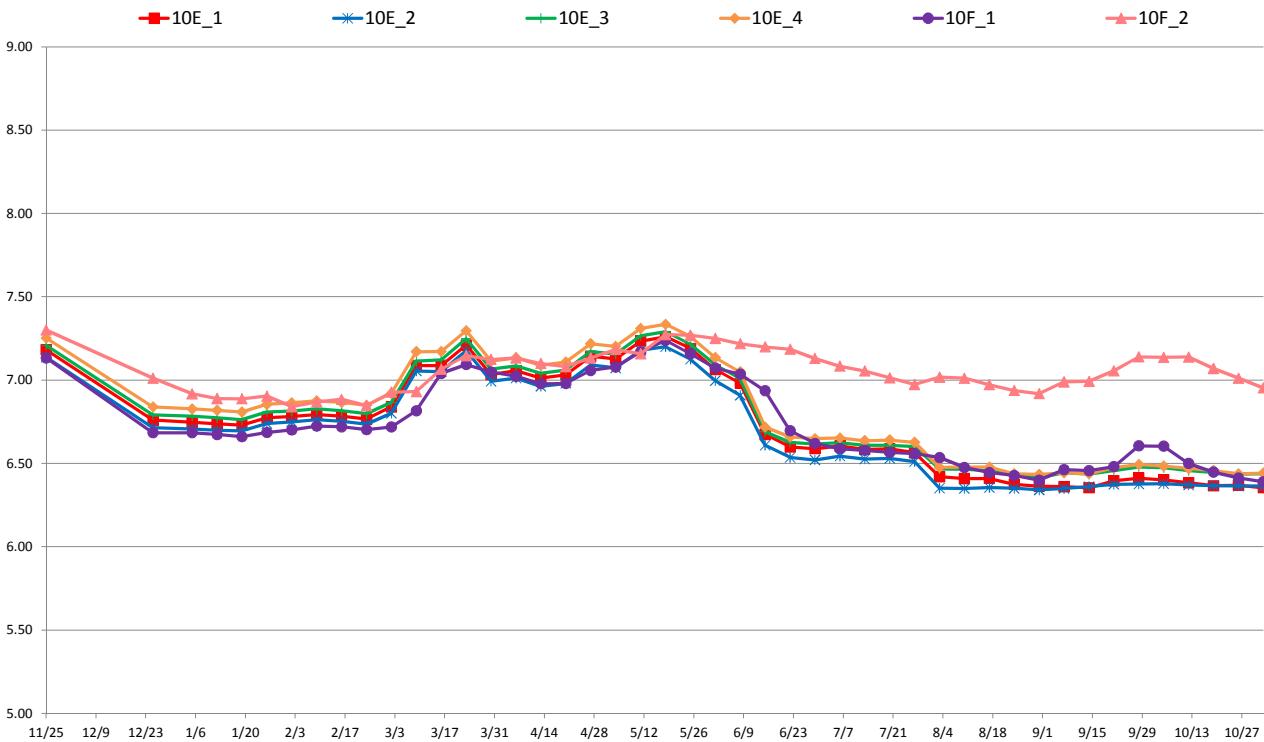
8丁目水位 (T.P+m)



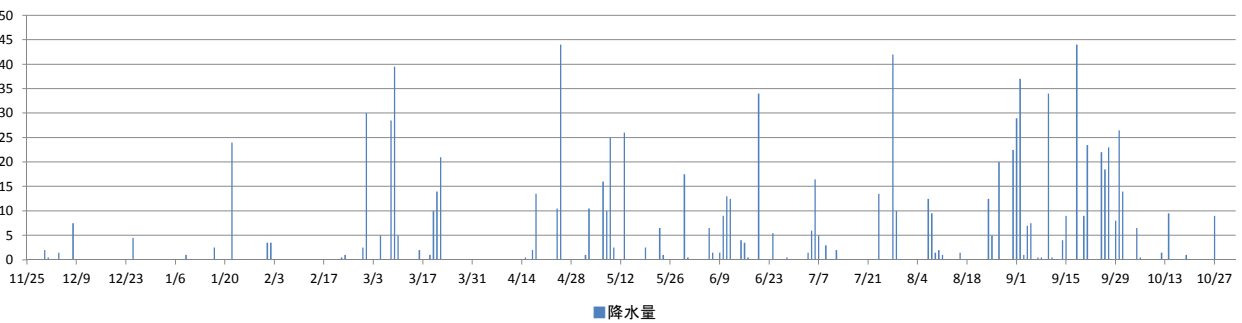
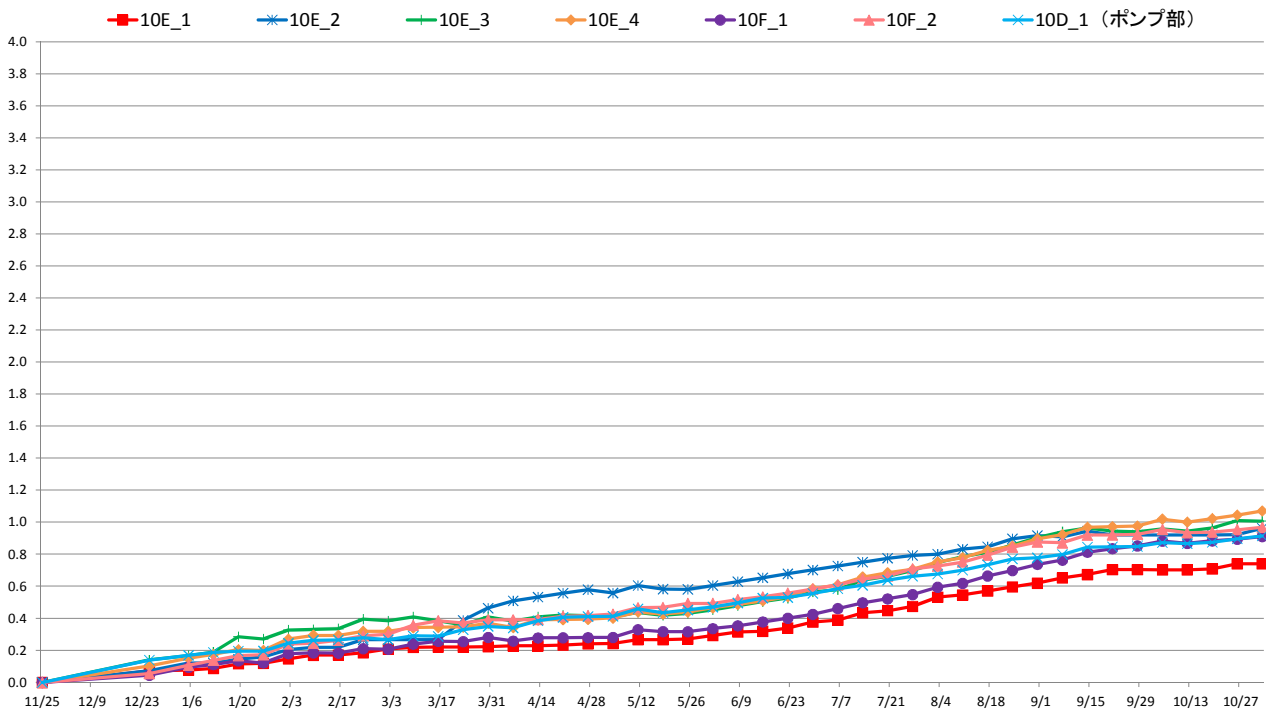
8丁目沈下 (G.L-cm)



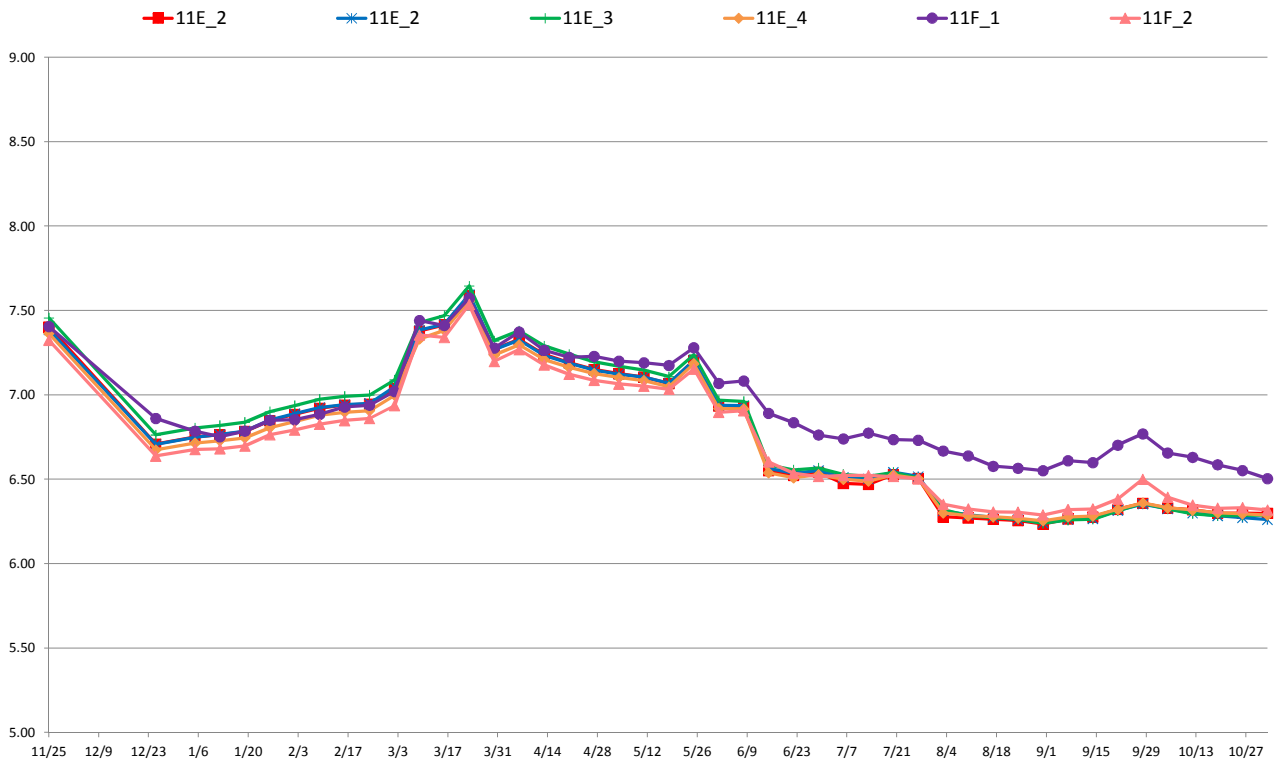
10丁目水位 (T.P+m)



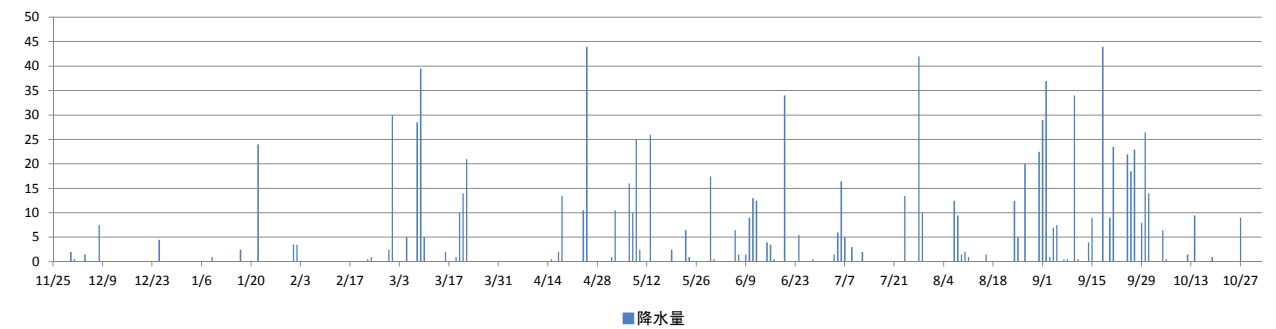
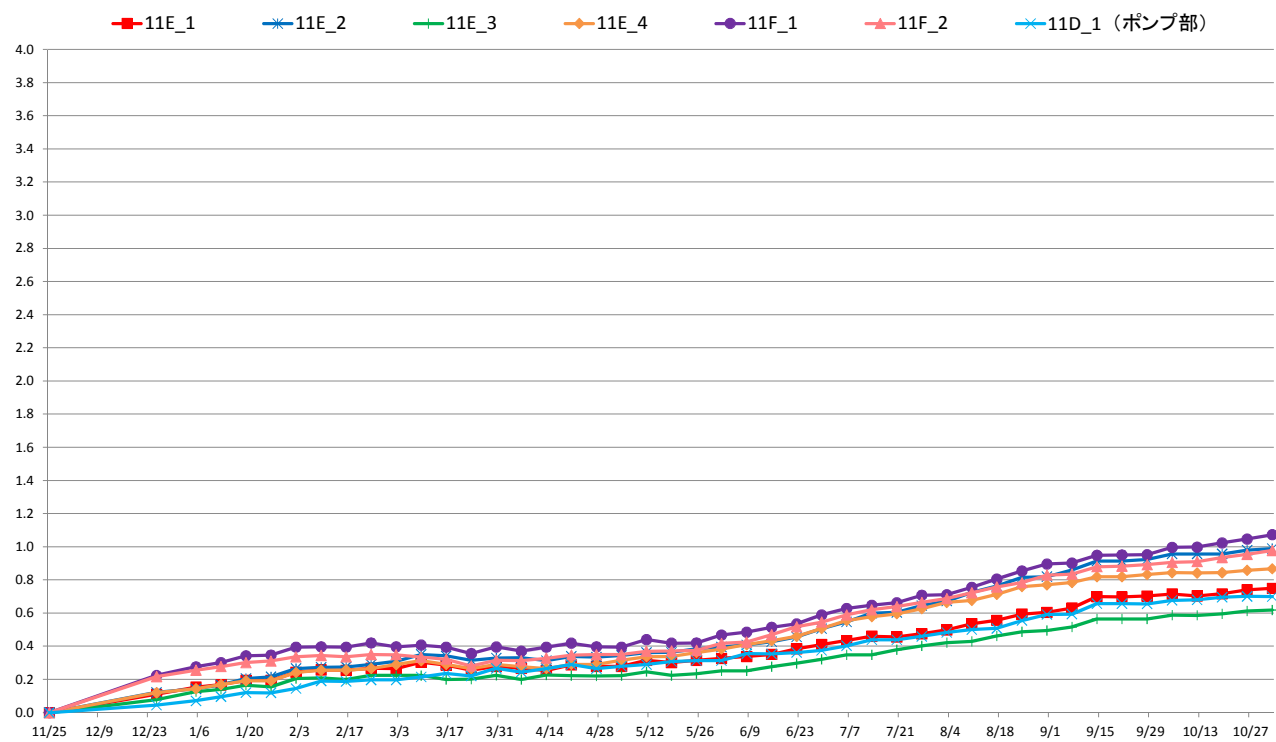
10丁目沈下 (G.L-cm)



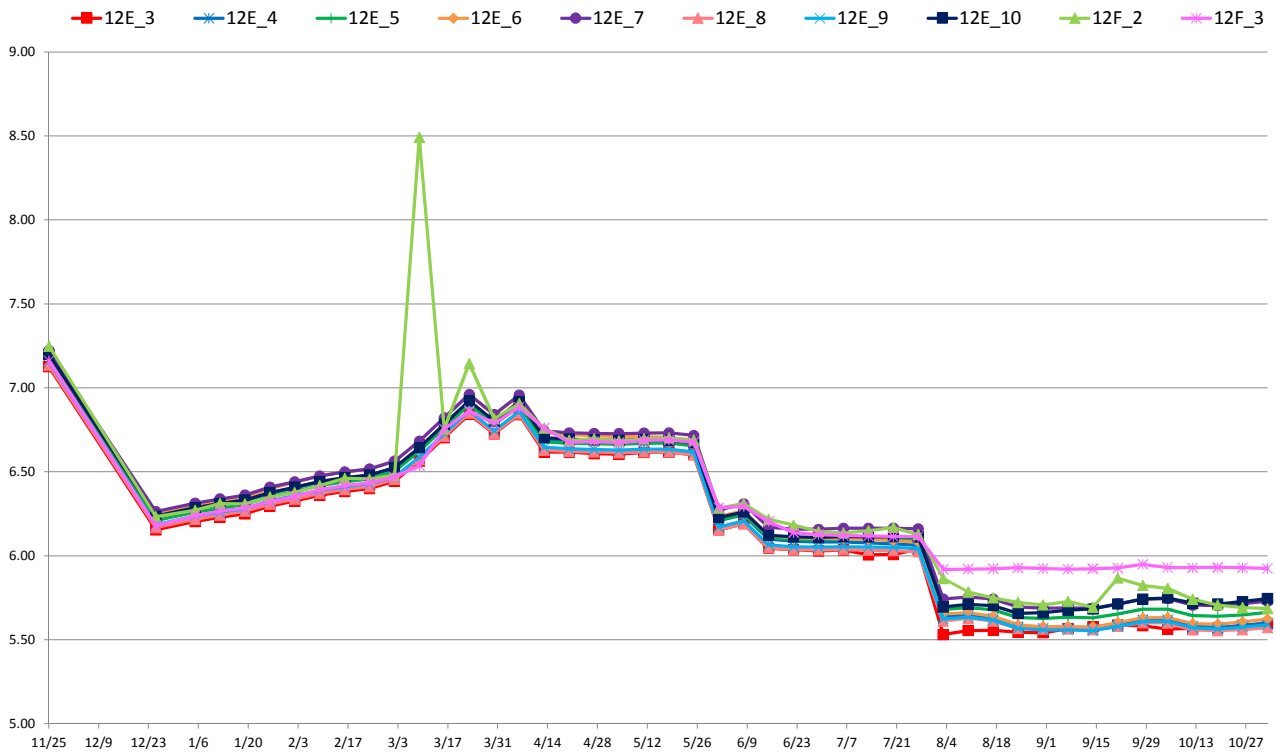
11丁目水位 (T.P+m)



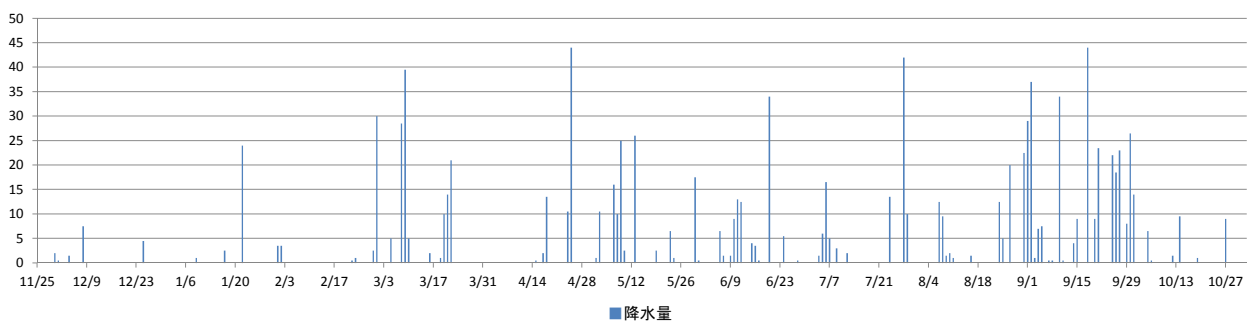
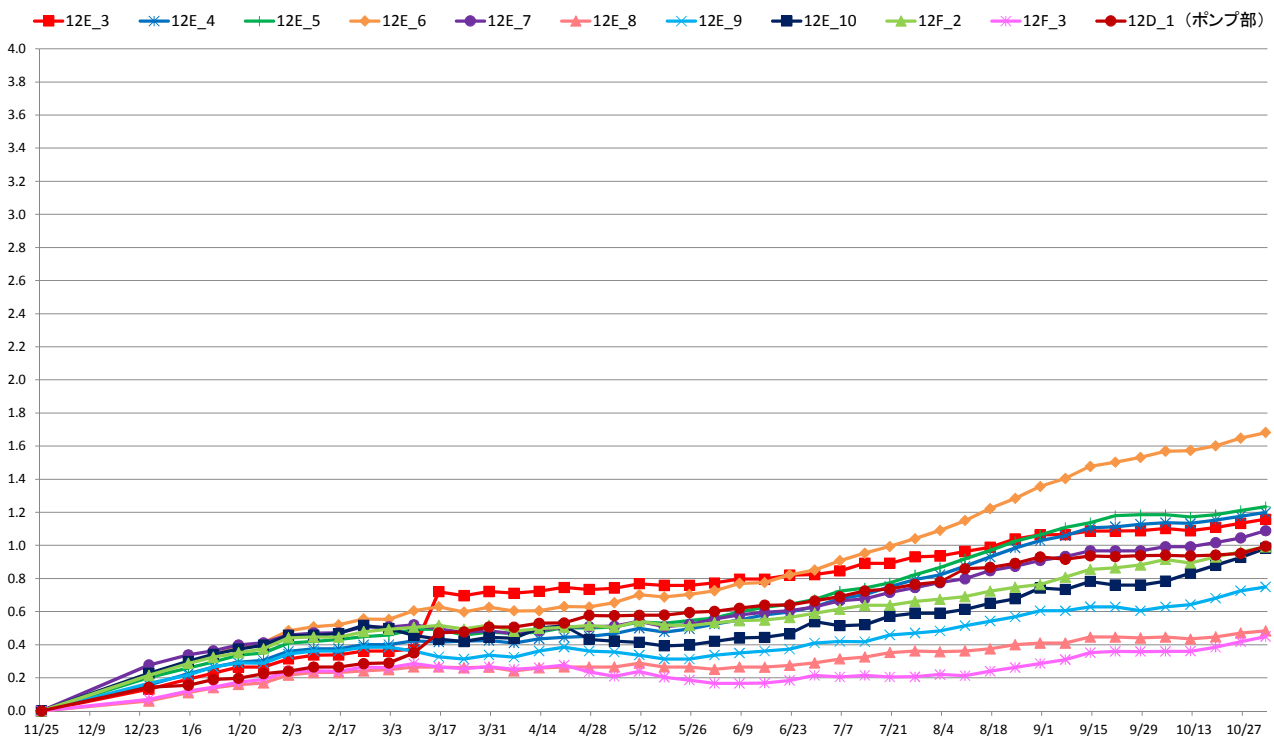
11丁目沈下 (G.L-cm)



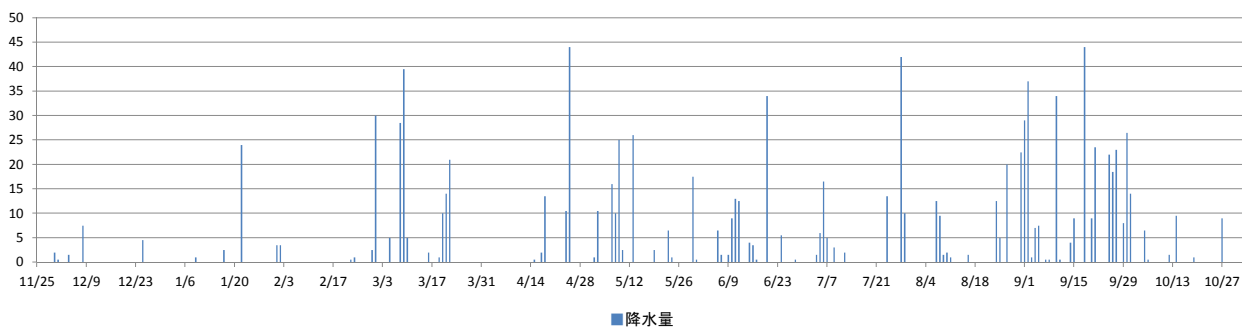
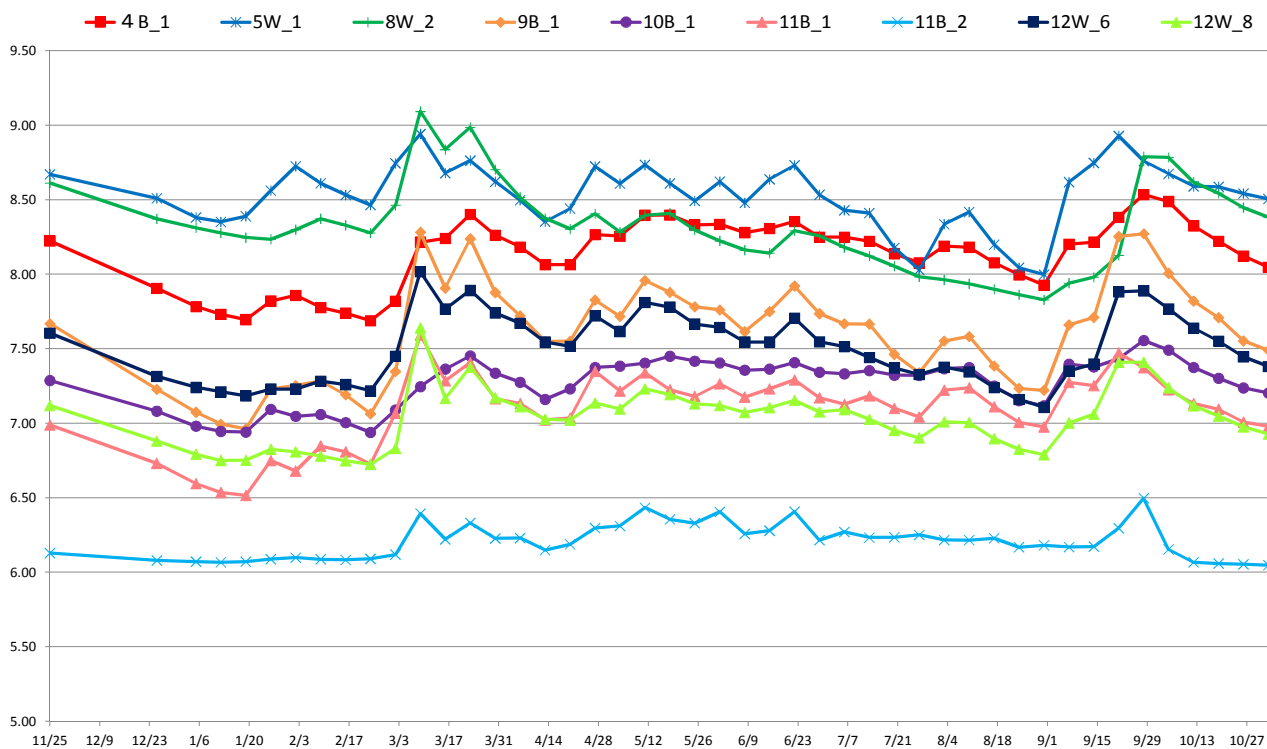
1 2丁目水位 (T.P+m)



1 2丁目沈下 (G.L-cm)



対策範囲外水位 (T,P+m)



[地下水位]

事業区域名	4丁目(民地部)			
計測地点名	4F_1		4F_2	
計測地点地盤高 (T.P.m)	9.14		9.26	
計測日	地下水位 (T.P.m)	地下水位 (GLm)	地下水位 (T.P.m)	地下水位 (GLm)
2017/11/25 12:00	8.40	-0.736	8.13	-1.127
2017/12/25 12:00	7.91	-1.231	7.90	-1.356
2018/1/5 12:00	7.78	-1.363	7.80	-1.457
2018/1/12 12:00	7.75	-1.391	7.76	-1.495
2018/1/19 12:00	7.76	-1.376	7.78	-1.484
2018/1/26 12:00	8.34	-0.797	7.84	-1.425
2018/2/2 12:00	8.45	-0.687	7.78	-1.480
2018/2/9 12:00	8.34	-0.803	7.81	-1.449
2018/2/16 12:00	8.34	-0.801	7.85	-1.407
2018/2/23 12:00	7.81	-1.329	7.83	-1.433
2018/3/2 12:00	8.42	-0.723	7.92	-1.339
2018/3/9 12:00	8.65	-0.495	8.05	-1.208
2018/3/16 12:00	8.50	-0.642	8.24	-1.016
2018/3/23 12:00	8.58	-0.562	8.30	-0.960
2018/3/30 12:00	8.48	-0.657	8.23	-1.034
2018/4/6 12:00	8.42	-0.716	8.22	-1.042
2018/4/13 12:00	8.40	-0.737	8.10	-1.158
2018/4/20 12:00	8.42	-0.723	8.09	-1.166
2018/4/27 12:00	8.47	-0.671	8.16	-1.100
2018/5/4 12:00	8.47	-0.673	8.20	-1.058
2018/5/11 12:00	8.52	-0.624	8.23	-1.029
2018/5/18 12:00	8.51	-0.627	8.33	-0.932
2018/5/25 12:00	8.49	-0.647	8.27	-0.993
2018/6/1 12:00	8.49	-0.654	8.22	-1.038
2018/6/8 12:00	8.45	-0.686	8.19	-1.073
2018/6/15 12:00	8.45	-0.689	8.12	-1.138
2018/6/22 12:00	8.45	-0.691	8.11	-1.155
2018/6/29 12:00	8.40	-0.744	8.05	-1.205
2018/7/6 12:00	8.53	-0.605	8.00	-1.263
2018/7/13 12:00	8.39	-0.752	8.00	-1.262
2018/7/20 12:00	8.03	-1.105	7.94	-1.318
2018/7/27 12:00	7.97	-1.174	7.91	-1.354
2018/8/3 12:00	8.05	-1.088	7.86	-1.396
2018/8/10 12:00	8.37	-0.773	7.80	-1.462
2018/8/17 12:00	7.87	-1.274	7.72	-1.537
2018/8/24 12:00	7.83	-1.307	7.67	-1.591
2018/8/31 12:00	7.80	-1.336	7.63	-1.631
2018/9/7 12:00	8.38	-0.756	7.77	-1.494
2018/9/14 12:00	8.42	-0.721	7.80	-1.462
2018/9/21 12:00	8.60	-0.543	7.89	-1.374
2018/9/28 12:00	8.55	-0.591	8.09	-1.175
2018/10/5 12:00	8.47	-0.669	8.10	-1.162
2018/10/12 12:00	8.42	-0.724	8.03	-1.232
2018/10/19 12:00	8.38	-0.761	7.92	-1.341
2018/10/26 12:00	8.37	-0.769	7.83	-1.432
2018/11/2 12:00	7.80	-1.336	7.75	-1.509
1段階目水位 2018/2/24まで	7.84	-1.30	7.84	-1.42
2段階目水位 2018/5/24まで	7.75	-1.39	7.75	-1.51
最終水位 2018/8/24まで	7.66	-1.48	7.66	-1.60

[地下水位]

事業区域名	4丁目(道路部)									
計測地点名	4E_1		4E_2		4E_3		4E_4		4E_5	
計測地点地盤高 (T.P.m)	9.18		9.30		9.08		8.85		9.23	
計測日	地下水位 (T.P.m)	地下水位 (GLm)	地下水位 (T.P.m)	地下水位 (GLm)	地下水位 (T.P.m)	地下水位 (GLm)	地下水位 (T.P.m)	地下水位 (GLm)	地下水位 (T.P.m)	地下水位 (GLm)
2017/11/25 12:00	7.92	-1.257	7.98	-1.316	7.98	-1.104	7.28	-1.571	8.00	-1.232
2017/12/25 12:00	7.58	-1.604	7.64	-1.660	7.63	-1.455	6.94	-1.909	7.65	-1.582
2018/1/5 12:00	7.64	-1.535	7.71	-1.591	7.69	-1.386	7.01	-1.839	7.72	-1.515
2018/1/12 12:00	7.67	-1.511	7.73	-1.571	7.71	-1.366	7.03	-1.816	7.74	-1.493
2018/1/19 12:00	7.71	-1.474	7.77	-1.532	7.75	-1.329	7.07	-1.779	7.77	-1.457
2018/1/26 12:00	7.79	-1.388	7.85	-1.449	7.83	-1.247	7.15	-1.695	7.86	-1.371
2018/2/2 12:00	7.82	-1.364	7.88	-1.424	7.86	-1.221	7.18	-1.670	7.88	-1.348
2018/2/9 12:00	7.82	-1.360	7.88	-1.421	7.86	-1.220	7.18	-1.667	7.88	-1.346
2018/2/16 12:00	7.82	-1.356	7.88	-1.417	7.86	-1.215	7.19	-1.664	7.89	-1.341
2018/2/23 12:00	7.81	-1.367	7.87	-1.428	7.85	-1.225	7.18	-1.674	7.88	-1.352
2018/3/2 12:00	7.88	-1.301	7.94	-1.359	7.92	-1.158	7.24	-1.606	7.95	-1.283
2018/3/9 12:00	8.11	-1.070	8.17	-1.125	8.15	-0.928	7.47	-1.378	8.18	-1.049
2018/4/20 12:00	7.98	-1.199	8.04	-1.258	8.03	-1.050	7.36	-1.489	8.06	-1.169
2018/4/27 12:00	8.08	-1.099	8.14	-1.158	8.13	-0.949	7.46	-1.387	8.16	-1.066
2018/5/4 12:00	8.06	-1.118	8.12	-1.179	8.11	-0.969	7.44	-1.406	8.14	-1.087
2018/5/11 12:00	8.16	-1.022	8.21	-1.085	8.21	-0.870	7.54	-1.305	8.24	-0.987
2018/5/18 12:00	8.16	-1.021	8.21	-1.085	8.21	-0.875	7.54	-1.306	8.24	-0.989
2018/5/25 12:00	8.09	-1.087	8.15	-1.152	8.14	-0.941	7.48	-1.372	8.18	-1.055
2018/6/1 12:00	7.96	-1.223	8.01	-1.290	8.00	-1.077	7.35	-1.504	8.04	-1.186
2018/6/8 12:00	7.88	-1.295	7.93	-1.366	7.93	-1.154	7.27	-1.576	7.97	-1.259
2018/6/15 12:00	7.59	-1.591	7.64	-1.657	7.63	-1.454	6.97	-1.880	7.67	-1.559
2018/6/22 12:00	7.60	-1.581	7.65	-1.654	7.64	-1.440	6.98	-1.868	7.69	-1.544
2018/6/29 12:00	7.59	-1.588	7.64	-1.657	7.62	-1.463	6.96	-1.887	7.67	-1.562
2018/7/6 12:00	7.60	-1.583	7.64	-1.656	7.63	-1.455	6.97	-1.880	7.67	-1.561
2018/7/13 12:00	7.60	-1.580	7.64	-1.657	7.63	-1.451	6.98	-1.869	7.69	-1.540
2018/7/20 12:00	7.59	-1.586	7.63	-1.665	7.62	-1.460	6.97	-1.877	7.69	-1.542
2018/7/27 12:00	7.59	-1.587	7.63	-1.667	7.62	-1.458	6.97	-1.877	7.69	-1.541
2018/8/3 12:00	6.82	-2.362	6.87	-2.426	6.76	-2.321	6.10	-2.745	6.83	-2.403
2018/8/10 12:00	6.82	-2.362	6.88	-2.423	6.75	-2.335	6.09	-2.764	6.82	-2.410
2018/8/17 12:00	6.83	-2.346	6.89	-2.407	6.75	-2.328	6.09	-2.763	6.82	-2.407
2018/8/24 12:00	6.83	-2.346	6.88	-2.419	6.75	-2.328	6.09	-2.760	6.83	-2.401
2018/8/31 12:00	6.82	-2.359	6.87	-2.434	6.75	-2.326	6.10	-2.753	6.84	-2.394
2018/9/7 12:00	6.80	-2.378	6.87	-2.426	6.76	-2.320	6.10	-2.754	6.84	-2.393
2018/9/14 12:00	6.79	-2.385	6.87	-2.428	6.76	-2.315	6.10	-2.754	6.82	-2.406
2018/9/21 12:00	6.81	-2.371	6.89	-2.411	6.79	-2.294	6.11	-2.737	6.84	-2.385
2018/9/28 12:00	6.83	-2.352	6.89	-2.410	6.79	-2.294	6.11	-2.736	6.85	-2.385
2018/10/5 12:00	6.82	-2.359	6.88	-2.417	6.79	-2.291	6.12	-2.734	6.85	-2.380
2018/10/12 12:00	6.81	-2.375	6.87	-2.431	6.78	-2.297	6.11	-2.740	6.84	-2.392
2018/10/19 12:00	6.80	-2.380	6.87	-2.433	6.78	-2.296	6.11	-2.735	6.83	-2.398
2018/10/26 12:00	6.80	-2.382	6.87	-2.431	6.78	-2.298	6.12	-2.732	6.86	-2.368
2018/11/2 12:00	6.80	-2.381	6.87	-2.427	6.78	-2.305	6.11	-2.737	6.85	-2.376

[沈下量]

事業区域名 計測地点名	4丁目(民地部)	
	4F_1 沈下量 (cm)	4F_2 沈下量 (cm)
2017/11/25 12:00	0.0	0.0
2017/12/25 12:00	0.2	0.1
2018/1/5 12:00	0.2	0.2
2018/1/12 12:00	0.3	0.2
2018/1/19 12:00	0.3	0.2
2018/1/26 12:00	0.3	0.3
2018/2/2 12:00	0.3	0.3
2018/2/9 12:00	0.3	0.3
2018/2/16 12:00	0.3	0.3
2018/2/23 12:00	0.3	0.3
2018/3/2 12:00	0.3	0.3
2018/3/9 12:00	0.3	0.3
2018/3/16 12:00	0.3	0.2
2018/3/23 12:00	0.2	0.2
2018/3/30 12:00	0.2	0.2
2018/4/6 12:00	0.2	0.2
2018/4/13 12:00	0.2	0.2
2018/4/20 12:00	0.3	0.3
2018/4/27 12:00	0.3	0.3
2018/5/4 12:00	0.2	0.2
2018/5/11 12:00	0.2	0.3
2018/5/18 12:00	0.2	0.2
2018/5/25 12:00	0.2	0.2
2018/6/1 12:00	0.2	0.2
2018/6/8 12:00	0.2	0.3
2018/6/15 12:00	0.3	0.3
2018/6/22 12:00	0.3	0.3
2018/6/29 12:00	0.3	0.3
2018/7/6 12:00	0.3	0.3
2018/7/13 12:00	0.3	0.4
2018/7/20 12:00	0.4	0.4
2018/7/27 12:00	0.4	0.4
2018/8/3 12:00	0.4	0.4
2018/8/10 12:00	0.4	0.5
2018/8/17 12:00	0.5	0.5
2018/8/24 12:00	0.5	0.6
2018/8/31 12:00	0.5	0.6
2018/9/7 12:00	0.5	0.6
2018/9/14 12:00	0.5	0.6
2018/9/21 12:00	0.5	0.6
2018/9/28 12:00	0.5	0.5
2018/10/5 12:00	0.5	0.5
2018/10/12 12:00	0.5	0.5
2018/10/19 12:00	0.5	0.5
2018/10/26 12:00	0.5	0.5
2018/11/2 12:00	0.6	0.6

[沈下量]

事業区域名 計測地点名	4丁目(道路部)					
	4E_1	4E_2	4E_3	4E_4	4E_5	4D_1(ポンプ部)
計測日	沈下量 (cm)	沈下量 (cm)	沈下量 (cm)	沈下量 (cm)	沈下量 (cm)	沈下量 (cm)
2017/11/25 12:00	0.0	0.0	0.0	0.0	0.0	0.0
2017/12/25 12:00	0.1	0.2	0.2	0.1	0.2	0.1
2018/1/5 12:00	0.2	0.3	0.2	0.2	0.2	0.2
2018/1/12 12:00	0.2	0.3	0.3	0.2	0.2	0.2
2018/1/19 12:00	0.2	0.3	0.3	0.2	0.3	0.2
2018/1/26 12:00	0.3	0.3	0.3	0.2	0.3	0.2
2018/2/2 12:00	0.3	0.4	0.3	0.3	0.3	0.2
2018/2/9 12:00	0.3	0.4	0.3	0.3	0.3	0.2
2018/2/16 12:00	0.3	0.4	0.3	0.3	0.3	0.2
2018/2/23 12:00	0.3	0.4	0.3	0.3	0.3	0.3
2018/3/2 12:00	0.3	0.4	0.3	0.3	0.3	0.2
2018/3/9 12:00	0.3	0.4	0.3	0.3	0.3	0.2
2018/3/16 12:00	0.2	0.4	0.3	0.2	0.2	0.2
2018/3/23 12:00	0.2	0.4	0.2	0.2	0.2	0.1
2018/3/30 12:00	0.2	0.4	0.2	0.2	0.2	0.2
2018/4/6 12:00	0.2	0.4	0.2	0.2	0.2	0.1
2018/4/13 12:00	0.2	0.4	0.2	0.2	0.2	0.2
2018/4/20 12:00	0.3	0.5	0.3	0.2	0.2	0.2
2018/4/27 12:00	0.3	0.5	0.2	0.2	0.2	0.2
2018/5/4 12:00	0.3	0.5	0.2	0.2	0.2	0.2
2018/5/11 12:00	0.3	0.5	0.2	0.2	0.2	0.2
2018/5/18 12:00	0.2	0.5	0.2	0.2	0.2	0.1
2018/5/25 12:00	0.3	0.5	0.2	0.2	0.2	0.1
2018/6/1 12:00	0.3	0.6	0.2	0.2	0.2	0.2
2018/6/8 12:00	0.3	0.6	0.2	0.2	0.2	0.2
2018/6/15 12:00	0.3	0.7	0.3	0.2	0.2	0.2
2018/6/22 12:00	0.3	0.7	0.3	0.2	0.2	0.2
2018/6/29 12:00	0.3	0.8	0.3	0.3	0.3	0.2
2018/7/6 12:00	0.4	0.8	0.3	0.3	0.3	0.3
2018/7/13 12:00	0.4	0.9	0.3	0.3	0.3	0.2
2018/7/20 12:00	0.5	0.9	0.4	0.3	0.3	0.3
2018/7/27 12:00	0.5	0.9	0.4	0.4	0.3	0.3
2018/8/3 12:00	0.5	1.0	0.5	0.4	0.4	0.4
2018/8/10 12:00	0.5	1.0	0.5	0.4	0.4	0.4
2018/8/17 12:00	0.6	1.0	0.5	0.4	0.5	0.4
2018/8/24 12:00	0.6	1.1	0.6	0.5	0.5	0.4
2018/8/31 12:00	0.6	1.1	0.6	0.5	0.5	0.5
2018/9/7 12:00	0.6	1.1	0.6	0.5	0.5	0.5
2018/9/14 12:00	0.6	1.1	0.6	0.5	0.5	0.5
2018/9/21 12:00	0.5	1.1	0.6	0.5	0.5	0.5
2018/9/28 12:00	0.5	1.1	0.6	0.4	0.5	0.4
2018/10/5 12:00	0.5	1.1	0.6	0.4	0.5	0.5
2018/10/12 12:00	0.5	1.1	0.6	0.4	0.5	0.4
2018/10/19 12:00	0.5	1.1	0.6	0.4	0.5	0.4
2018/10/26 12:00	0.5	1.1	0.6	0.5	0.5	0.5
2018/11/2 12:00	0.5	1.2	0.6	0.5	0.5	0.5

[地下水位]

事業区域名	6丁目(民地部)			
計測地点名	6F_1		6F_2	
計測地点地盤高 (T.P.m)	9.36		9.37	
計測日	地下水位 (T.P.m)	地下水位 (GLm)	地下水位 (T.P.m)	地下水位 (GLm)
2017/11/25 12:00	7.53	-1.832	7.55	-1.818
2017/12/25 12:00	7.14	-2.221	7.29	-2.083
2018/1/5 12:00	7.04	-2.322	7.20	-2.170
2018/1/12 12:00	6.99	-2.368	7.17	-2.201
2018/1/19 12:00	7.01	-2.347	7.15	-2.220
2018/1/26 12:00	7.08	-2.283	7.19	-2.182
2018/2/2 12:00	7.03	-2.332	7.17	-2.201
2018/2/9 12:00	7.05	-2.308	7.22	-2.151
2018/2/16 12:00	7.12	-2.240	7.24	-2.133
2018/2/23 12:00	7.12	-2.239	7.20	-2.165
2018/3/2 12:00	7.18	-2.183	7.27	-2.101
2018/3/9 12:00	7.32	-2.038	7.76	-1.612
2018/3/16 12:00	7.56	-1.804	7.73	-1.640
2018/3/23 12:00	7.59	-1.771	7.80	-1.568
2018/3/30 12:00	7.54	-1.824	7.69	-1.682
2018/4/6 12:00	7.53	-1.832	7.60	-1.775
2018/4/13 12:00	7.40	-1.963	7.51	-1.862
2018/4/20 12:00	7.40	-1.964	7.49	-1.885
2018/4/27 12:00	7.43	-1.926	7.61	-1.758
2018/5/4 12:00	7.48	-1.877	7.66	-1.710
2018/5/11 12:00	7.48	-1.875	7.76	-1.608
2018/5/18 12:00	7.58	-1.778	7.83	-1.537
2018/5/25 12:00	7.54	-1.819	7.69	-1.678
2018/6/1 12:00	7.47	-1.894	7.65	-1.723
2018/6/8 12:00	7.43	-1.934	7.60	-1.772
2018/6/15 12:00	7.34	-2.022	7.63	-1.744
2018/6/22 12:00	7.29	-2.072	7.67	-1.700
2018/6/29 12:00	7.23	-2.133	7.62	-1.749
2018/7/6 12:00	7.19	-2.168	7.53	-1.840
2018/7/13 12:00	7.23	-2.129	7.54	-1.833
2018/7/20 12:00	7.19	-2.168	7.47	-1.898
2018/7/27 12:00	7.17	-2.188	7.42	-1.951
2018/8/3 12:00	7.15	-2.213	7.56	-1.809
2018/8/10 12:00	7.11	-2.253	7.51	-1.856
2018/8/17 12:00	7.06	-2.297	7.45	-1.922
2018/8/24 12:00	7.04	-2.321	7.36	-2.014
2018/8/31 12:00	6.99	-2.372	7.30	-2.069
2018/9/7 12:00	7.01	-2.349	7.68	-1.686
2018/9/14 12:00	7.00	-2.356	7.70	-1.673
2018/9/21 12:00	7.06	-2.298	7.77	-1.598
2018/9/28 12:00	7.25	-2.110	8.06	-1.306
2018/10/5 12:00	7.38	-1.976	7.84	-1.525
2018/10/12 12:00	7.34	-2.020	7.61	-1.759
2018/10/19 12:00	7.24	-2.121	7.50	-1.867
2018/10/26 12:00	7.15	-2.208	7.41	-1.956
2018/11/2 12:00	7.05	-2.314	7.36	-2.011
1段階目水位 2018/2/24まで	7.10	-2.26	7.10	-2.27
2段階目水位 2018/5/24まで	6.90	-2.46	6.90	-2.47
最終水位 2018/8/24まで	6.70	-2.66	6.70	-2.67

[地下水位]

事業区域名	6丁目(道路部)							
計測地点名	6E_1		6E_2		6E_3		6E_4	
計測地点地盤高 (T.P.m)	8.82		8.84		8.79		8.66	
計測日	地下水位 (T.P.m)	地下水位 (GLm)	地下水位 (T.P.m)	地下水位 (GLm)	地下水位 (T.P.m)	地下水位 (GLm)	地下水位 (T.P.m)	地下水位 (GLm)
2017/11/25 12:00	7.31	-1.514	7.32	-1.518	7.43	-1.358	7.39	-1.266
2017/12/25 12:00	6.74	-2.078	6.75	-2.094	6.86	-1.926	6.83	-1.833
2018/1/5 12:00	6.82	-2.005	6.82	-2.020	6.93	-1.857	6.90	-1.760
2018/1/12 12:00	6.84	-1.980	6.84	-1.995	6.96	-1.832	6.93	-1.732
2018/1/19 12:00	6.86	-1.959	6.87	-1.973	6.98	-1.810	6.95	-1.710
2018/1/26 12:00	6.94	-1.885	6.94	-1.899	7.05	-1.736	7.02	-1.637
2018/2/2 12:00	6.99	-1.833	6.99	-1.852	7.10	-1.685	7.07	-1.587
2018/2/9 12:00	7.04	-1.784	7.04	-1.798	7.16	-1.635	7.13	-1.534
2018/2/16 12:00	7.04	-1.776	7.05	-1.788	7.17	-1.624	7.14	-1.524
2018/2/23 12:00	7.04	-1.777	7.05	-1.789	7.17	-1.625	7.13	-1.525
2018/3/2 12:00	7.12	-1.705	7.12	-1.720	7.23	-1.557	7.20	-1.457
2018/3/9 12:00	7.36	-1.465	7.37	-1.475	7.47	-1.318	7.44	-1.225
2018/3/16 12:00	7.32	-1.496	7.33	-1.510	7.45	-1.341	7.41	-1.248
2018/3/23 12:00	7.47	-1.346	7.49	-1.354	7.60	-1.185	7.56	-1.095
2018/3/30 12:00	7.14	-1.680	7.15	-1.694	7.26	-1.526	7.22	-1.438
2018/4/6 12:00	7.23	-1.588	7.24	-1.599	7.36	-1.431	7.31	-1.346
2018/4/13 12:00	7.19	-1.628	7.20	-1.638	7.32	-1.469	7.28	-1.385
2018/4/20 12:00	7.21	-1.609	7.22	-1.618	7.34	-1.449	7.29	-1.369
2018/4/27 12:00	7.31	-1.511	7.32	-1.516	7.44	-1.347	7.39	-1.270
2018/5/4 12:00	7.29	-1.533	7.30	-1.537	7.42	-1.367	7.36	-1.299
2018/5/11 12:00	7.29	-1.527	7.31	-1.534	7.43	-1.364	7.36	-1.297
2018/5/18 12:00	7.30	-1.516	7.33	-1.514	7.45	-1.340	7.38	-1.275
2018/5/25 12:00	7.23	-1.595	7.24	-1.599	7.37	-1.422	7.29	-1.365
2018/6/1 12:00	6.96	-1.864	6.96	-1.877	7.09	-1.700	7.02	-1.644
2018/6/8 12:00	6.89	-1.926	6.90	-1.939	7.03	-1.761	6.95	-1.708
2018/6/15 12:00	6.69	-2.128	6.70	-2.145	6.82	-1.974	6.74	-1.921
2018/6/22 12:00	6.69	-2.126	6.70	-2.142	6.82	-1.969	6.74	-1.916
2018/6/29 12:00	6.69	-2.125	6.70	-2.141	6.83	-1.960	6.76	-1.903
2018/7/6 12:00	6.69	-2.125	6.69	-2.150	6.82	-1.967	6.73	-1.927
2018/7/13 12:00	6.70	-2.122	6.70	-2.140	6.84	-1.953	6.75	-1.912
2018/7/20 12:00	6.70	-2.122	6.70	-2.144	6.84	-1.953	6.74	-1.922
2018/7/27 12:00	6.69	-2.135	6.68	-2.156	6.83	-1.963	6.72	-1.937
2018/8/3 12:00	6.17	-2.647	6.17	-2.671	6.30	-2.491	6.20	-2.457
2018/8/10 12:00	6.16	-2.656	6.16	-2.683	6.30	-2.490	6.21	-2.453
2018/8/17 12:00	6.17	-2.654	6.16	-2.682	6.29	-2.502	6.19	-2.467
2018/8/24 12:00	6.16	-2.660	6.15	-2.690	6.30	-2.490	6.21	-2.455
2018/8/31 12:00	6.15	-2.665	6.14	-2.700	6.28	-2.513	6.19	-2.475
2018/9/7 12:00	6.17	-2.651	6.15	-2.687	6.33	-2.459	6.22	-2.438
2018/9/14 12:00	6.18	-2.642	6.16	-2.681	6.36	-2.429	6.21	-2.446
2018/9/21 12:00	6.24	-2.578	6.21	-2.626	6.41	-2.380	6.25	-2.411
2018/9/28 12:00	6.24	-2.579	6.21	-2.626	6.42	-2.374	6.26	-2.402
2018/10/5 12:00	6.20	-2.620	6.18	-2.662	6.41	-2.382	6.26	-2.399
2018/10/12 12:00	6.19	-2.626	6.18	-2.664	6.40	-2.391	6.28	-2.383
2018/10/19 12:00	6.20	-2.616	6.18	-2.661	6.38	-2.412	6.26	-2.395
2018/10/26 12:00	6.18	-2.639	6.16	-2.682	6.39	-2.398	6.26	-2.402
2018/11/2 12:00	6.17	-2.651	6.14	-2.698	6.37	-2.417	6.24	-2.424

[沈下量]

事業区域名 計測地点名	6丁目(民地部)	
	6F_1	6F_2
計測日	沈下量 (cm)	沈下量 (cm)
2017/11/25 12:00	0.0	0.0
2017/12/25 12:00	0.1	0.1
2018/1/5 12:00	0.1	0.2
2018/1/12 12:00	0.1	0.2
2018/1/19 12:00	0.2	0.2
2018/1/26 12:00	0.2	0.3
2018/2/2 12:00	0.2	0.3
2018/2/9 12:00	0.2	0.3
2018/2/16 12:00	0.2	0.3
2018/2/23 12:00	0.2	0.3
2018/3/2 12:00	0.2	0.3
2018/3/9 12:00	0.2	0.3
2018/3/16 12:00	0.2	0.3
2018/3/23 12:00	0.1	0.2
2018/3/30 12:00	0.2	0.2
2018/4/6 12:00	0.1	0.2
2018/4/13 12:00	0.2	0.3
2018/4/20 12:00	0.2	0.3
2018/4/27 12:00	0.2	0.3
2018/5/4 12:00	0.1	0.2
2018/5/11 12:00	0.2	0.2
2018/5/18 12:00	0.1	0.2
2018/5/25 12:00	0.1	0.2
2018/6/1 12:00	0.1	0.2
2018/6/8 12:00	0.1	0.2
2018/6/15 12:00	0.1	0.3
2018/6/22 12:00	0.2	0.3
2018/6/29 12:00	0.2	0.3
2018/7/6 12:00	0.2	0.3
2018/7/13 12:00	0.2	0.3
2018/7/20 12:00	0.2	0.3
2018/7/27 12:00	0.2	0.4
2018/8/3 12:00	0.2	0.3
2018/8/10 12:00	0.2	0.4
2018/8/17 12:00	0.2	0.4
2018/8/24 12:00	0.2	0.4
2018/8/31 12:00	0.3	0.5
2018/9/7 12:00	0.3	0.4
2018/9/14 12:00	0.3	0.5
2018/9/21 12:00	0.3	0.5
2018/9/28 12:00	0.3	0.4
2018/10/5 12:00	0.3	0.4
2018/10/12 12:00	0.3	0.4
2018/10/19 12:00	0.3	0.5
2018/10/26 12:00	0.3	0.5
2018/11/2 12:00	0.3	0.5

[沈下量]

事業区域名 計測地点名	6丁目(道路部)				
	6E_1 沈下量 (cm)	6E_2 沈下量 (cm)	6E_3 沈下量 (cm)	6E_4 沈下量 (cm)	6D_1(ポンプ部) 沈下量 (cm)
2017/11/25 12:00	0.0	0.0	0.0	0.0	0.0
2017/12/25 12:00	0.1	0.1	0.2	0.2	0.1
2018/1/5 12:00	0.1	0.1	0.3	0.2	0.2
2018/1/12 12:00	0.1	0.1	0.3	0.3	0.2
2018/1/19 12:00	0.2	0.2	0.4	0.3	0.2
2018/1/26 12:00	0.2	0.2	0.4	0.3	0.2
2018/2/2 12:00	0.2	0.2	0.4	0.3	0.2
2018/2/9 12:00	0.2	0.2	0.4	0.3	0.3
2018/2/16 12:00	0.2	0.2	0.4	0.3	0.2
2018/2/23 12:00	0.2	0.2	0.5	0.3	0.3
2018/3/2 12:00	0.2	0.2	0.4	0.3	0.3
2018/3/9 12:00	0.2	0.2	0.4	0.3	0.2
2018/3/16 12:00	0.2	0.2	0.3	0.2	0.2
2018/3/23 12:00	0.1	0.2	0.3	0.2	0.2
2018/3/30 12:00	0.1	0.2	0.3	0.2	0.2
2018/4/6 12:00	0.1	0.2	0.3	0.2	0.2
2018/4/13 12:00	0.1	0.2	0.4	0.2	0.2
2018/4/20 12:00	0.1	0.2	0.4	0.3	0.2
2018/4/27 12:00	0.2	0.2	0.4	0.2	0.2
2018/5/4 12:00	0.1	0.2	0.3	0.2	0.2
2018/5/11 12:00	0.2	0.2	0.3	0.1	0.2
2018/5/18 12:00	0.1	0.1	0.3	0.1	0.1
2018/5/25 12:00	0.1	0.2	0.3	0.1	0.1
2018/6/1 12:00	0.1	0.2	0.3	0.2	0.2
2018/6/8 12:00	0.1	0.2	0.3	0.2	0.2
2018/6/15 12:00	0.2	0.2	0.4	0.2	0.2
2018/6/22 12:00	0.2	0.2	0.4	0.2	0.2
2018/6/29 12:00	0.2	0.2	0.4	0.3	0.3
2018/7/6 12:00	0.2	0.2	0.4	0.3	0.3
2018/7/13 12:00	0.2	0.2	0.4	0.3	0.3
2018/7/20 12:00	0.2	0.3	0.4	0.3	0.3
2018/7/27 12:00	0.2	0.3	0.5	0.3	0.3
2018/8/3 12:00	0.2	0.3	0.5	0.3	0.3
2018/8/10 12:00	0.3	0.3	0.5	0.4	0.4
2018/8/17 12:00	0.3	0.3	0.6	0.4	0.4
2018/8/24 12:00	0.3	0.4	0.6	0.4	0.4
2018/8/31 12:00	0.3	0.4	0.7	0.5	0.5
2018/9/7 12:00	0.3	0.4	0.7	0.5	0.5
2018/9/14 12:00	0.3	0.4	0.7	0.5	0.5
2018/9/21 12:00	0.3	0.4	0.7	0.5	0.5
2018/9/28 12:00	0.3	0.4	0.6	0.4	0.5
2018/10/5 12:00	0.3	0.4	0.6	0.5	0.5
2018/10/12 12:00	0.3	0.4	0.6	0.5	0.5
2018/10/19 12:00	0.3	0.4	0.7	0.5	0.5
2018/10/26 12:00	0.3	0.4	0.7	0.6	0.5
2018/11/2 12:00	0.3	0.4	0.8	0.6	0.5

[地下水位]

事業区域名	7・12丁目(民地部)			
計測地点名	7F_1		7F_2	
計測地点地盤高 (T.P.m)	9.31		8.50	
計測日	地下水位 (T.P.m)	地下水位 (GLm)	地下水位 (T.P.m)	地下水位 (GLm)
2017/11/25 12:00	7.75	-1.556	7.23	-1.266
2017/12/25 12:00	7.41	-1.896	6.78	-1.718
2018/1/5 12:00	7.31	-1.996	6.69	-1.806
2018/1/12 12:00	7.27	-2.042	6.65	-1.846
2018/1/19 12:00	7.24	-2.068	6.66	-1.844
2018/1/26 12:00	7.24	-2.071	6.70	-1.802
2018/2/2 12:00	7.17	-2.135	6.65	-1.850
2018/2/9 12:00	7.17	-2.145	6.66	-1.839
2018/2/16 12:00	7.17	-2.135	6.69	-1.814
2018/2/23 12:00	7.15	-2.164	6.65	-1.849
2018/3/2 12:00	7.20	-2.109	6.72	-1.781
2018/3/9 12:00	7.23	-2.081	6.82	-1.682
2018/3/16 12:00	7.38	-1.930	7.06	-1.442
2018/3/23 12:00	7.49	-1.825	7.20	-1.296
2018/3/30 12:00	7.51	-1.800	7.14	-1.358
2018/4/6 12:00	7.52	-1.787	7.14	-1.357
2018/4/13 12:00	7.49	-1.822	7.08	-1.419
2018/4/20 12:00	7.46	-1.850	7.08	-1.415
2018/4/27 12:00	7.49	-1.820	7.18	-1.318
2018/5/4 12:00	7.54	-1.775	7.21	-1.288
2018/5/11 12:00	7.51	-1.800	7.21	-1.293
2018/5/18 12:00	7.64	-1.666	7.29	-1.207
2018/5/25 12:00	7.65	-1.660	7.23	-1.269
2018/6/1 12:00	7.64	-1.672	7.18	-1.318
2018/6/8 12:00	7.61	-1.698	7.10	-1.397
2018/6/15 12:00	7.62	-1.694	7.10	-1.403
2018/6/22 12:00	7.62	-1.686	7.11	-1.391
2018/6/29 12:00	7.61	-1.700	7.02	-1.480
2018/7/6 12:00	7.58	-1.728	6.96	-1.537
2018/7/13 12:00	7.56	-1.751	6.98	-1.516
2018/7/20 12:00	7.55	-1.764	6.92	-1.583
2018/7/27 12:00	7.52	-1.788	6.88	-1.616
2018/8/3 12:00	7.55	-1.760	6.94	-1.565
2018/8/10 12:00	7.54	-1.766	6.85	-1.651
2018/8/17 12:00	7.50	-1.814	6.77	-1.728
2018/8/24 12:00	7.45	-1.857	6.67	-1.828
2018/8/31 12:00	7.42	-1.888	6.60	-1.898
2018/9/7 12:00	7.46	-1.847	6.80	-1.704
2018/9/14 12:00	7.46	-1.847	6.82	-1.682
2018/9/21 12:00	7.53	-1.779	6.90	-1.602
2018/9/28 12:00	7.69	-1.620	7.10	-1.401
2018/10/5 12:00	7.86	-1.450	7.05	-1.449
2018/10/12 12:00	7.84	-1.474	6.89	-1.611
2018/10/19 12:00	7.74	-1.566	6.79	-1.714
2018/10/26 12:00	7.65	-1.657	6.70	-1.798
2018/11/2 12:00	7.57	-1.744	6.62	-1.882
1段階目水位 2018/2/24まで	7.19	-2.12	7.19	-1.31
2段階目水位 2018/5/24まで	7.15	-2.17	7.15	-1.36
最終水位 2018/8/24まで	7.10	-2.21	7.10	-1.40

[地下水位]

事業区域名	7・12丁目(道路部)					
計測地点名	7E_1		7E_3		7E_4	
計測地点地盤高 (T.P.m)	8.88		9.11		8.92	
計測日	地下水位 (T.P.m)	地下水位 (GLm)	地下水位 (T.P.m)	地下水位 (GLm)	地下水位 (T.P.m)	地下水位 (GLm)
2017/11/25 12:00	6.95	-1.934	7.31	-1.801	7.28	-1.640
2017/12/25 12:00	6.37	-2.511	6.74	-2.370	6.71	-2.212
2018/1/5 12:00	6.38	-2.501	6.74	-2.367	6.71	-2.211
2018/1/12 12:00	6.37	-2.510	6.73	-2.380	6.70	-2.221
2018/1/19 12:00	6.35	-2.534	6.70	-2.405	6.67	-2.246
2018/1/26 12:00	6.40	-2.480	6.76	-2.352	6.73	-2.194
2018/2/2 12:00	6.41	-2.474	6.76	-2.348	6.73	-2.191
2018/2/9 12:00	6.41	-2.471	6.77	-2.343	6.73	-2.187
2018/2/16 12:00	6.38	-2.496	6.74	-2.369	6.70	-2.217
2018/2/23 12:00	6.34	-2.542	6.69	-2.418	6.66	-2.263
2018/3/2 12:00	6.41	-2.469	6.76	-2.351	6.73	-2.191
2018/3/9 12:00	6.77	-2.114	7.11	-2.003	7.08	-1.838
2018/3/16 12:00	6.90	-1.979	7.25	-1.864	7.21	-1.708
2018/3/23 12:00	7.07	-1.812	7.41	-1.695	7.37	-1.546
2018/3/30 12:00	6.90	-1.984	7.24	-1.875	7.20	-1.717
2018/4/6 12:00	6.88	-1.996	7.22	-1.889	7.19	-1.728
2018/4/13 12:00	6.84	-2.038	7.18	-1.930	7.15	-1.770
2018/4/20 12:00	6.85	-2.030	7.19	-1.918	7.16	-1.757
2018/4/27 12:00	6.94	-1.935	7.29	-1.821	7.26	-1.661
2018/5/4 12:00	6.89	-1.985	7.24	-1.869	7.21	-1.708
2018/5/11 12:00	6.98	-1.900	7.33	-1.785	7.29	-1.626
2018/5/18 12:00	6.96	-1.921	7.31	-1.804	7.28	-1.643
2018/5/25 12:00	6.84	-2.038	7.19	-1.925	7.16	-1.761
2018/6/1 12:00	6.56	-2.317	6.91	-2.200	6.88	-2.038
2018/6/8 12:00	6.61	-2.270	6.96	-2.151	6.93	-1.989
2018/6/15 12:00	6.42	-2.458	6.77	-2.339	6.74	-2.178
2018/6/22 12:00	6.41	-2.467	6.76	-2.346	6.73	-2.187
2018/6/29 12:00	6.42	-2.462	6.77	-2.336	6.74	-2.177
2018/7/6 12:00	6.41	-2.465	6.77	-2.338	6.71	-2.211
2018/7/13 12:00	6.41	-2.468	6.77	-2.337	6.74	-2.182
2018/7/20 12:00	6.40	-2.479	6.76	-2.349	6.73	-2.194
2018/7/27 12:00	6.40	-2.482	6.76	-2.349	6.72	-2.196
2018/8/3 12:00	6.07	-2.813	6.41	-2.702	6.29	-2.628
2018/8/10 12:00	6.04	-2.837	6.41	-2.702	6.30	-2.622
2018/8/17 12:00	5.84	-3.041	6.41	-2.696	6.28	-2.636
2018/8/24 12:00	5.81	-3.072	6.41	-2.699	6.27	-2.648
2018/8/31 12:00	5.82	-3.064	6.42	-2.695	6.26	-2.657
2018/9/7 12:00	6.04	-2.836	6.42	-2.693	6.27	-2.649
2018/9/14 12:00	6.05	-2.830	6.42	-2.687	6.27	-2.649
2018/9/21 12:00	6.11	-2.772	6.43	-2.681	6.27	-2.648
2018/9/28 12:00	6.11	-2.765	6.43	-2.682	6.28	-2.643
2018/10/5 12:00	6.10	-2.776	6.43	-2.679	6.27	-2.647
2018/10/12 12:00	6.07	-2.808	6.43	-2.684	6.27	-2.648
2018/10/19 12:00	6.05	-2.835	6.42	-2.686	6.27	-2.648
2018/10/26 12:00	5.95	-2.929	6.43	-2.683	6.27	-2.647
2018/11/2 12:00	5.96	-2.924	6.43	-2.681	6.26	-2.655

※7E_2は欠番

[沈下量]

事業区域名	7・12丁目(民地部)	
	7F_1	7F_2
計測地点名	沈下量 (cm)	沈下量 (cm)
計測日	沈下量 (cm)	沈下量 (cm)
2017/11/25 12:00	0.0	0.0
2017/12/25 12:00	0.2	0.1
2018/1/5 12:00	0.2	0.1
2018/1/12 12:00	0.3	0.1
2018/1/19 12:00	0.3	0.1
2018/1/26 12:00	0.3	0.1
2018/2/2 12:00	0.4	0.2
2018/2/9 12:00	0.4	0.2
2018/2/16 12:00	0.4	0.2
2018/2/23 12:00	0.4	0.2
2018/3/2 12:00	0.4	0.2
2018/3/9 12:00	0.4	0.2
2018/3/16 12:00	0.4	0.2
2018/3/23 12:00	0.3	0.2
2018/3/30 12:00	0.4	0.2
2018/4/6 12:00	0.3	0.2
2018/4/13 12:00	0.4	0.2
2018/4/20 12:00	0.4	0.2
2018/4/27 12:00	0.4	0.2
2018/5/4 12:00	0.3	0.2
2018/5/11 12:00	0.3	0.2
2018/5/18 12:00	0.3	0.2
2018/5/25 12:00	0.3	0.2
2018/6/1 12:00	0.3	0.2
2018/6/8 12:00	0.3	0.2
2018/6/15 12:00	0.3	0.2
2018/6/22 12:00	0.3	0.2
2018/6/29 12:00	0.4	0.2
2018/7/6 12:00	0.4	0.3
2018/7/13 12:00	0.4	0.3
2018/7/20 12:00	0.4	0.3
2018/7/27 12:00	0.4	0.3
2018/8/3 12:00	0.4	0.4
2018/8/10 12:00	0.5	0.4
2018/8/17 12:00	0.5	0.4
2018/8/24 12:00	0.6	0.5
2018/8/31 12:00	0.7	0.5
2018/9/7 12:00	0.7	0.5
2018/9/14 12:00	0.7	0.5
2018/9/21 12:00	0.7	0.5
2018/9/28 12:00	0.6	0.5
2018/10/5 12:00	0.6	0.5
2018/10/12 12:00	0.6	0.5
2018/10/19 12:00	0.6	0.5
2018/10/26 12:00	0.7	0.5
2018/11/2 12:00	0.7	0.5

[沈下量]

事業区域名 計測地点名	7・12丁目(道路部)			
	7E_1	7E_3	7E_4	7D_1(ポンプ部)
計測日	沈下量 (cm)	沈下量 (cm)	沈下量 (cm)	沈下量 (cm)
2017/11/25 12:00	0.0	0.0	0.0	0.0
2017/12/25 12:00	0.1	0.2	0.2	0.1
2018/1/5 12:00	0.1	0.2	0.3	0.1
2018/1/12 12:00	0.1	0.3	0.3	0.2
2018/1/19 12:00	0.1	0.3	0.3	0.2
2018/1/26 12:00	0.1	0.3	0.3	0.2
2018/2/2 12:00	0.1	0.4	0.4	0.2
2018/2/9 12:00	0.2	0.4	0.4	0.2
2018/2/16 12:00	0.2	0.4	0.4	0.2
2018/2/23 12:00	0.2	0.4	0.4	0.2
2018/3/2 12:00	0.2	0.4	0.4	0.3
2018/3/9 12:00	0.2	0.4	0.4	0.3
2018/3/16 12:00	0.2	0.4	0.3	0.2
2018/3/23 12:00	0.2	0.4	0.3	0.2
2018/3/30 12:00	0.2	0.4	0.3	0.2
2018/4/6 12:00	0.2	0.3	0.3	0.2
2018/4/13 12:00	0.2	0.4	0.3	0.2
2018/4/20 12:00	0.2	0.4	0.3	0.2
2018/4/27 12:00	0.2	0.4	0.3	0.2
2018/5/4 12:00	0.2	0.3	0.3	0.2
2018/5/11 12:00	0.2	0.4	0.3	0.2
2018/5/18 12:00	0.2	0.3	0.2	0.2
2018/5/25 12:00	0.2	0.3	0.2	0.2
2018/6/1 12:00	0.2	0.3	0.3	0.3
2018/6/8 12:00	0.2	0.4	0.3	0.3
2018/6/15 12:00	0.2	0.4	0.3	0.3
2018/6/22 12:00	0.2	0.4	0.3	0.3
2018/6/29 12:00	0.3	0.4	0.4	0.3
2018/7/6 12:00	0.3	0.4	0.4	0.4
2018/7/13 12:00	0.3	0.4	0.4	0.4
2018/7/20 12:00	0.3	0.5	0.4	0.4
2018/7/27 12:00	0.4	0.5	0.4	0.4
2018/8/3 12:00	0.4	0.5	0.4	0.5
2018/8/10 12:00	0.4	0.5	0.5	0.5
2018/8/17 12:00	0.4	0.5	0.5	0.5
2018/8/24 12:00	0.5	0.6	0.6	0.6
2018/8/31 12:00	0.5	0.6	0.6	0.6
2018/9/7 12:00	0.5	0.6	0.6	0.6
2018/9/14 12:00	0.5	0.6	0.6	0.6
2018/9/21 12:00	0.5	0.6	0.6	0.6
2018/9/28 12:00	0.5	0.6	0.6	0.6
2018/10/5 12:00	0.5	0.5	0.6	0.6
2018/10/12 12:00	0.5	0.6	0.6	0.6
2018/10/19 12:00	0.5	0.6	0.6	0.6
2018/10/26 12:00	0.5	0.6	0.7	0.6
2018/11/2 12:00	0.5	0.6	0.7	0.6

※7E_2は欠番

[地下水位]

事業区域名	8丁目(民地部)	
計測地点名	8F_1	
計測地点地盤高 (T.P.m)	9.30	
計測日	地下水位 (T.P.m)	地下水位 (GLm)
2017/11/25 12:00	8.09	-1.211
2017/12/25 12:00	7.71	-1.589
2018/1/5 12:00	7.57	-1.726
2018/1/12 12:00	7.52	-1.782
2018/1/19 12:00	7.51	-1.790
2018/1/26 12:00	7.56	-1.740
2018/2/2 12:00	7.44	-1.859
2018/2/9 12:00	7.53	-1.765
2018/2/16 12:00	7.63	-1.666
2018/2/23 12:00	7.61	-1.694
2018/3/2 12:00	7.97	-1.327
2018/3/9 12:00	9.25	-0.049
2018/3/16 12:00	8.19	-1.105
2018/3/23 12:00	8.69	-0.613
2018/3/30 12:00	8.10	-1.202
2018/4/6 12:00	8.08	-1.221
2018/4/13 12:00	7.92	-1.379
2018/4/20 12:00	7.89	-1.408
2018/4/27 12:00	7.99	-1.309
2018/5/4 12:00	7.98	-1.317
2018/5/11 12:00	8.20	-1.099
2018/5/18 12:00	8.25	-1.049
2018/5/25 12:00	8.09	-1.206
2018/6/1 12:00	7.98	-1.319
2018/6/8 12:00	7.96	-1.343
2018/6/15 12:00	7.90	-1.400
2018/6/22 12:00	7.98	-1.316
2018/6/29 12:00	7.92	-1.382
2018/7/6 12:00	7.86	-1.440
2018/7/13 12:00	7.84	-1.459
2018/7/20 12:00	7.79	-1.515
2018/7/27 12:00	7.74	-1.562
2018/8/3 12:00	7.69	-1.614
2018/8/10 12:00	7.62	-1.680
2018/8/17 12:00	7.53	-1.765
2018/8/24 12:00	7.49	-1.812
2018/8/31 12:00	7.42	-1.875
2018/9/7 12:00	7.50	-1.796
2018/9/14 12:00	7.74	-1.559
2018/9/21 12:00	9.23	-0.071
2018/9/28 12:00	8.83	-0.466
2018/10/5 12:00	8.21	-1.090
2018/10/12 12:00	7.99	-1.310
2018/10/19 12:00	7.86	-1.445
2018/10/26 12:00	7.74	-1.562
2018/11/2 12:00	7.62	-1.677
1段階目水位 2018/2/24まで	7.71	-1.59
2段階目水位 2018/5/24まで	7.70	-1.60
最終水位 2018/8/24まで	7.69	-1.61

[地下水位]

事業区域名	8丁目(道路部)	
計測地点名	8E_1	
計測地点地盤高 (T.P.m)	8.94	
計測日	地下水位 (T.P.m)	地下水位 (GLm)
2017/11/25 12:00	7.71	-1.227
2017/12/25 12:00	7.30	-1.640
2018/1/5 12:00	7.29	-1.651
2018/1/12 12:00	7.27	-1.666
2018/1/19 12:00	7.28	-1.662
2018/1/26 12:00	7.36	-1.577
2018/2/2 12:00	7.37	-1.566
2018/2/9 12:00	7.41	-1.535
2018/2/16 12:00	7.43	-1.512
2018/2/23 12:00	7.45	-1.493
2018/3/2 12:00	7.61	-1.332
2018/3/9 12:00	7.93	-1.008
2018/3/16 12:00	7.92	-1.024
2018/3/23 12:00	7.92	-1.021
2018/3/30 12:00	7.89	-1.047
2018/4/6 12:00	7.83	-1.110
2018/4/13 12:00	7.72	-1.215
2018/4/20 12:00	7.74	-1.202
2018/4/27 12:00	7.86	-1.083
2018/5/4 12:00	7.80	-1.142
2018/5/11 12:00	7.93	-1.014
2018/5/18 12:00	7.92	-1.024
2018/5/25 12:00	7.77	-1.171
2018/6/1 12:00	7.63	-1.311
2018/6/8 12:00	7.63	-1.313
2018/6/15 12:00	7.47	-1.474
2018/6/22 12:00	7.42	-1.521
2018/6/29 12:00	7.50	-1.444
2018/7/6 12:00	7.41	-1.526
2018/7/13 12:00	7.47	-1.468
2018/7/20 12:00	7.50	-1.436
2018/7/27 12:00	7.47	-1.468
2018/8/3 12:00	5.76	-3.178
2018/8/10 12:00	5.77	-3.175
2018/8/17 12:00	5.78	-3.163
2018/8/24 12:00	5.78	-3.162
2018/8/31 12:00	6.66	-2.279
2018/9/7 12:00	5.88	-3.057
2018/9/14 12:00	5.73	-3.213
2018/9/21 12:00	5.88	-3.055
2018/9/28 12:00	5.89	-3.052
2018/10/5 12:00	5.89	-3.052
2018/10/12 12:00	5.89	-3.049
2018/10/19 12:00	5.90	-3.045
2018/10/26 12:00	5.90	-3.044
2018/11/2 12:00	5.90	-3.040

[沈下量]

事業区域名	8丁目(民地部)
計測地点名	8F_1
計測日	沈下量 (cm)
2017/11/25 12:00	0.0
2017/12/25 12:00	0.2
2018/1/5 12:00	0.2
2018/1/12 12:00	0.2
2018/1/19 12:00	0.3
2018/1/26 12:00	0.3
2018/2/2 12:00	0.4
2018/2/9 12:00	0.4
2018/2/16 12:00	0.3
2018/2/23 12:00	0.4
2018/3/2 12:00	0.3
2018/3/9 12:00	0.3
2018/3/16 12:00	0.3
2018/3/23 12:00	0.2
2018/3/30 12:00	0.2
2018/4/6 12:00	0.2
2018/4/13 12:00	0.2
2018/4/20 12:00	0.3
2018/4/27 12:00	0.3
2018/5/4 12:00	0.2
2018/5/11 12:00	0.2
2018/5/18 12:00	0.2
2018/5/25 12:00	0.2
2018/6/1 12:00	0.2
2018/6/8 12:00	0.2
2018/6/15 12:00	0.2
2018/6/22 12:00	0.2
2018/6/29 12:00	0.2
2018/7/6 12:00	0.3
2018/7/13 12:00	0.3
2018/7/20 12:00	0.3
2018/7/27 12:00	0.3
2018/8/3 12:00	0.4
2018/8/10 12:00	0.4
2018/8/17 12:00	0.4
2018/8/24 12:00	0.5
2018/8/31 12:00	0.5
2018/9/7 12:00	0.5
2018/9/14 12:00	0.5
2018/9/21 12:00	0.4
2018/9/28 12:00	0.3
2018/10/5 12:00	0.3
2018/10/12 12:00	0.3
2018/10/19 12:00	0.4
2018/10/26 12:00	0.4
2018/11/2 12:00	0.5

[沈下量]

事業区域名	8丁目(道路部)	
	8E_1	8D_1(ポンプ部)
計測地点名	沈下量 (cm)	沈下量 (cm)
計測日	沈下量 (cm)	沈下量 (cm)
2017/11/25 12:00	0.0	0.0
2017/12/25 12:00	0.3	0.1
2018/1/5 12:00	0.3	0.1
2018/1/12 12:00	0.3	0.1
2018/1/19 12:00	0.4	0.1
2018/1/26 12:00	0.4	0.1
2018/2/2 12:00	0.4	0.2
2018/2/9 12:00	0.4	0.2
2018/2/16 12:00	0.4	0.2
2018/2/23 12:00	0.4	0.2
2018/3/2 12:00	0.4	0.2
2018/3/9 12:00	0.4	0.2
2018/3/16 12:00	0.4	0.1
2018/3/23 12:00	0.3	0.1
2018/3/30 12:00	0.3	0.1
2018/4/6 12:00	0.3	0.1
2018/4/13 12:00	0.3	0.1
2018/4/20 12:00	0.4	0.1
2018/4/27 12:00	0.4	0.1
2018/5/4 12:00	0.4	0.1
2018/5/11 12:00	0.4	0.1
2018/5/18 12:00	0.3	0.1
2018/5/25 12:00	0.3	0.1
2018/6/1 12:00	0.4	0.1
2018/6/8 12:00	0.4	0.1
2018/6/15 12:00	0.4	0.1
2018/6/22 12:00	0.4	0.1
2018/6/29 12:00	0.4	0.2
2018/7/6 12:00	0.4	0.2
2018/7/13 12:00	0.5	0.2
2018/7/20 12:00	0.5	0.2
2018/7/27 12:00	0.5	0.2
2018/8/3 12:00	0.6	0.2
2018/8/10 12:00	0.7	0.3
2018/8/17 12:00	0.7	0.3
2018/8/24 12:00	0.8	0.4
2018/8/31 12:00	0.8	0.4
2018/9/7 12:00	0.8	0.4
2018/9/14 12:00	0.9	0.4
2018/9/21 12:00	0.9	0.4
2018/9/28 12:00	0.8	0.3
2018/10/5 12:00	0.8	0.3
2018/10/12 12:00	0.8	0.3
2018/10/19 12:00	0.9	0.4
2018/10/26 12:00	0.9	0.4
2018/11/2 12:00	1.0	0.4

[地下水位]

事業区域名	10丁目(民地部)			
計測地点名	10F_1		10F_2	
計測地点地盤高 (T.P.m)	8.96		9.15	
計測日	地下水位 (T.P.m)	地下水位 (GLm)	地下水位 (T.P.m)	地下水位 (GLm)
2017/11/25 12:00	7.13	-1.827	7.30	-1.848
2017/12/25 12:00	6.69	-2.274	7.01	-2.138
2018/1/5 12:00	6.69	-2.274	6.92	-2.232
2018/1/12 12:00	6.67	-2.286	6.89	-2.261
2018/1/19 12:00	6.66	-2.298	6.89	-2.262
2018/1/26 12:00	6.69	-2.274	6.90	-2.245
2018/2/2 12:00	6.70	-2.258	6.84	-2.308
2018/2/9 12:00	6.72	-2.235	6.87	-2.281
2018/2/16 12:00	6.72	-2.239	6.89	-2.264
2018/2/23 12:00	6.70	-2.256	6.85	-2.303
2018/3/2 12:00	6.72	-2.240	6.93	-2.222
2018/3/9 12:00	6.82	-2.143	6.93	-2.218
2018/3/16 12:00	7.04	-1.919	7.07	-2.083
2018/3/23 12:00	7.09	-1.866	7.15	-2.002
2018/3/30 12:00	7.05	-1.910	7.12	-2.025
2018/4/6 12:00	7.02	-1.936	7.13	-2.017
2018/4/13 12:00	6.98	-1.981	7.10	-2.050
2018/4/20 12:00	6.98	-1.979	7.08	-2.068
2018/4/27 12:00	7.06	-1.901	7.13	-2.017
2018/5/4 12:00	7.08	-1.880	7.18	-1.965
2018/5/11 12:00	7.17	-1.789	7.16	-1.991
2018/5/18 12:00	7.24	-1.721	7.27	-1.876
2018/5/25 12:00	7.16	-1.801	7.27	-1.880
2018/6/1 12:00	7.07	-1.887	7.25	-1.899
2018/6/8 12:00	7.04	-1.924	7.22	-1.931
2018/6/15 12:00	6.94	-2.023	7.20	-1.950
2018/6/22 12:00	6.70	-2.263	7.19	-1.963
2018/6/29 12:00	6.62	-2.339	7.13	-2.020
2018/7/6 12:00	6.59	-2.371	7.08	-2.065
2018/7/13 12:00	6.58	-2.380	7.06	-2.095
2018/7/20 12:00	6.57	-2.393	7.01	-2.136
2018/7/27 12:00	6.56	-2.401	6.97	-2.176
2018/8/3 12:00	6.54	-2.424	7.02	-2.131
2018/8/10 12:00	6.48	-2.483	7.01	-2.138
2018/8/17 12:00	6.45	-2.514	6.97	-2.177
2018/8/24 12:00	6.43	-2.532	6.94	-2.212
2018/8/31 12:00	6.40	-2.559	6.92	-2.231
2018/9/7 12:00	6.46	-2.496	6.99	-2.160
2018/9/14 12:00	6.46	-2.502	6.99	-2.157
2018/9/21 12:00	6.48	-2.478	7.06	-2.093
2018/9/28 12:00	6.61	-2.354	7.14	-2.010
2018/10/5 12:00	6.60	-2.355	7.14	-2.013
2018/10/12 12:00	6.50	-2.459	7.14	-2.011
2018/10/19 12:00	6.45	-2.511	7.07	-2.080
2018/10/26 12:00	6.41	-2.547	7.01	-2.138
2018/11/2 12:00	6.39	-2.569	6.95	-2.196
1段階目水位 2018/2/24まで	6.94	-2.02	6.94	-2.21
2段階目水位 2018/5/24まで	6.75	-2.21	6.75	-2.40
最終水位 2018/8/24まで	6.56	-2.40	6.56	-2.59

[地下水位]

事業区域名	10丁目(道路部)							
計測地点名	10E_1		10E_2		10E_3		10E_4	
計測地点地盤高 (T.P.m)	8.67		8.96		8.49		8.58	
計測日	地下水位 (T.P.m)	地下水位 (GLm)	地下水位 (T.P.m)	地下水位 (GLm)	地下水位 (T.P.m)	地下水位 (GLm)	地下水位 (T.P.m)	地下水位 (GLm)
2017/11/25 12:00	7.18	-1.487	7.14	-1.822	7.21	-1.280	7.25	-1.327
2017/12/25 12:00	6.76	-1.909	6.72	-2.245	6.79	-1.698	6.84	-1.740
2018/1/5 12:00	6.75	-1.922	6.71	-2.253	6.78	-1.706	6.83	-1.752
2018/1/12 12:00	6.74	-1.932	6.70	-2.261	6.77	-1.716	6.82	-1.760
2018/1/19 12:00	6.73	-1.939	6.70	-2.263	6.76	-1.726	6.81	-1.771
2018/1/26 12:00	6.78	-1.895	6.74	-2.221	6.81	-1.680	6.86	-1.724
2018/2/2 12:00	6.78	-1.888	6.75	-2.210	6.82	-1.674	6.86	-1.715
2018/2/9 12:00	6.79	-1.877	6.76	-2.197	6.83	-1.662	6.88	-1.703
2018/2/16 12:00	6.78	-1.886	6.75	-2.207	6.82	-1.673	6.87	-1.713
2018/2/23 12:00	6.77	-1.904	6.74	-2.224	6.80	-1.690	6.85	-1.731
2018/3/2 12:00	6.84	-1.830	6.80	-2.159	6.87	-1.624	6.92	-1.660
2018/3/9 12:00	7.09	-1.582	7.06	-1.905	7.11	-1.375	7.17	-1.409
2018/3/16 12:00	7.09	-1.583	7.05	-1.909	7.12	-1.368	7.17	-1.408
2018/3/23 12:00	7.21	-1.459	7.18	-1.782	7.25	-1.241	7.30	-1.283
2018/3/30 12:00	7.03	-1.637	6.99	-1.966	7.07	-1.424	7.11	-1.465
2018/4/6 12:00	7.06	-1.614	7.01	-1.947	7.09	-1.403	7.13	-1.446
2018/4/13 12:00	7.01	-1.656	6.96	-1.996	7.04	-1.448	7.09	-1.491
2018/4/20 12:00	7.03	-1.638	6.98	-1.979	7.06	-1.429	7.11	-1.470
2018/4/27 12:00	7.14	-1.526	7.09	-1.869	7.17	-1.317	7.22	-1.361
2018/5/4 12:00	7.13	-1.541	7.07	-1.886	7.16	-1.334	7.20	-1.376
2018/5/11 12:00	7.23	-1.435	7.18	-1.781	7.27	-1.224	7.31	-1.269
2018/5/18 12:00	7.26	-1.409	7.20	-1.758	7.29	-1.199	7.34	-1.245
2018/5/25 12:00	7.19	-1.479	7.13	-1.833	7.22	-1.273	7.26	-1.318
2018/6/1 12:00	7.06	-1.606	7.00	-1.963	7.09	-1.397	7.14	-1.444
2018/6/8 12:00	6.98	-1.688	6.91	-2.050	7.01	-1.481	7.05	-1.530
2018/6/15 12:00	6.67	-1.995	6.61	-2.351	6.69	-1.799	6.72	-1.862
2018/6/22 12:00	6.60	-2.070	6.54	-2.423	6.63	-1.862	6.66	-1.921
2018/6/29 12:00	6.59	-2.081	6.52	-2.438	6.62	-1.873	6.65	-1.931
2018/7/6 12:00	6.61	-2.065	6.54	-2.416	6.63	-1.865	6.65	-1.926
2018/7/13 12:00	6.59	-2.085	6.53	-2.432	6.61	-1.880	6.64	-1.943
2018/7/20 12:00	6.59	-2.082	6.53	-2.430	6.61	-1.880	6.64	-1.939
2018/7/27 12:00	6.57	-2.105	6.51	-2.449	6.60	-1.888	6.63	-1.952
2018/8/3 12:00	6.42	-2.248	6.35	-2.608	6.47	-2.022	6.48	-2.104
2018/8/10 12:00	6.41	-2.260	6.35	-2.611	6.47	-2.024	6.48	-2.101
2018/8/17 12:00	6.41	-2.259	6.36	-2.604	6.46	-2.032	6.48	-2.101
2018/8/24 12:00	6.37	-2.295	6.35	-2.609	6.43	-2.058	6.44	-2.142
2018/8/31 12:00	6.36	-2.306	6.34	-2.618	6.42	-2.074	6.43	-2.146
2018/9/7 12:00	6.36	-2.308	6.35	-2.610	6.44	-2.045	6.44	-2.136
2018/9/14 12:00	6.36	-2.315	6.36	-2.599	6.44	-2.054	6.44	-2.142
2018/9/21 12:00	6.40	-2.273	6.38	-2.585	6.46	-2.032	6.47	-2.106
2018/9/28 12:00	6.41	-2.257	6.38	-2.583	6.48	-2.010	6.49	-2.085
2018/10/5 12:00	6.40	-2.268	6.38	-2.582	6.47	-2.015	6.49	-2.095
2018/10/12 12:00	6.38	-2.285	6.37	-2.589	6.46	-2.032	6.47	-2.110
2018/10/19 12:00	6.37	-2.303	6.37	-2.593	6.45	-2.043	6.46	-2.121
2018/10/26 12:00	6.37	-2.300	6.36	-2.595	6.44	-2.054	6.44	-2.142
2018/11/2 12:00	6.36	-2.315	6.36	-2.595	6.44	-2.052	6.44	-2.137

[沈下量]

事業区域名 計測地点名	10丁目(民地部)	
	10F_1 沈下量 (cm)	10F_2 沈下量 (cm)
2017/11/25 12:00	0.0	0.0
2017/12/25 12:00	0.0	0.1
2018/1/5 12:00	0.1	0.1
2018/1/12 12:00	0.1	0.1
2018/1/19 12:00	0.1	0.2
2018/1/26 12:00	0.1	0.2
2018/2/2 12:00	0.2	0.2
2018/2/9 12:00	0.2	0.2
2018/2/16 12:00	0.2	0.3
2018/2/23 12:00	0.2	0.3
2018/3/2 12:00	0.2	0.3
2018/3/9 12:00	0.2	0.4
2018/3/16 12:00	0.3	0.4
2018/3/23 12:00	0.3	0.4
2018/3/30 12:00	0.3	0.4
2018/4/6 12:00	0.3	0.4
2018/4/13 12:00	0.3	0.4
2018/4/20 12:00	0.3	0.4
2018/4/27 12:00	0.3	0.4
2018/5/4 12:00	0.3	0.4
2018/5/11 12:00	0.3	0.5
2018/5/18 12:00	0.3	0.5
2018/5/25 12:00	0.3	0.5
2018/6/1 12:00	0.3	0.5
2018/6/8 12:00	0.4	0.5
2018/6/15 12:00	0.4	0.5
2018/6/22 12:00	0.4	0.6
2018/6/29 12:00	0.4	0.6
2018/7/6 12:00	0.5	0.6
2018/7/13 12:00	0.5	0.6
2018/7/20 12:00	0.5	0.7
2018/7/27 12:00	0.5	0.7
2018/8/3 12:00	0.6	0.7
2018/8/10 12:00	0.6	0.8
2018/8/17 12:00	0.7	0.8
2018/8/24 12:00	0.7	0.8
2018/8/31 12:00	0.7	0.9
2018/9/7 12:00	0.8	0.9
2018/9/14 12:00	0.8	0.9
2018/9/21 12:00	0.8	0.9
2018/9/28 12:00	0.9	0.9
2018/10/5 12:00	0.9	1.0
2018/10/12 12:00	0.9	0.9
2018/10/19 12:00	0.9	0.9
2018/10/26 12:00	0.9	1.0
2018/11/2 12:00	0.9	1.0

[沈下量]

事業区域名 計測地点名	10丁目(道路部)				
	10E_1 沈下量 (cm)	10E_2 沈下量 (cm)	10E_3 沈下量 (cm)	10E_4 沈下量 (cm)	10D_1(ポンプ部) 沈下量 (cm)
2017/11/25 12:00	0.0	0.0	0.0	0.0	0.0
2017/12/25 12:00	0.1	0.1	0.1	0.1	0.1
2018/1/5 12:00	0.1	0.1	0.2	0.2	0.2
2018/1/12 12:00	0.1	0.1	0.2	0.2	0.2
2018/1/19 12:00	0.1	0.1	0.3	0.2	0.2
2018/1/26 12:00	0.1	0.2	0.3	0.2	0.2
2018/2/2 12:00	0.1	0.2	0.3	0.3	0.2
2018/2/9 12:00	0.2	0.2	0.3	0.3	0.3
2018/2/16 12:00	0.2	0.2	0.3	0.3	0.3
2018/2/23 12:00	0.2	0.3	0.4	0.3	0.3
2018/3/2 12:00	0.2	0.3	0.4	0.3	0.3
2018/3/9 12:00	0.2	0.3	0.4	0.3	0.3
2018/3/16 12:00	0.2	0.3	0.4	0.3	0.3
2018/3/23 12:00	0.2	0.4	0.4	0.3	0.3
2018/3/30 12:00	0.2	0.5	0.4	0.4	0.3
2018/4/6 12:00	0.2	0.5	0.4	0.3	0.3
2018/4/13 12:00	0.2	0.5	0.4	0.4	0.4
2018/4/20 12:00	0.2	0.6	0.4	0.4	0.4
2018/4/27 12:00	0.2	0.6	0.4	0.4	0.4
2018/5/4 12:00	0.2	0.6	0.4	0.4	0.4
2018/5/11 12:00	0.3	0.6	0.4	0.4	0.5
2018/5/18 12:00	0.3	0.6	0.4	0.4	0.4
2018/5/25 12:00	0.3	0.6	0.4	0.4	0.5
2018/6/1 12:00	0.3	0.6	0.5	0.5	0.5
2018/6/8 12:00	0.3	0.6	0.5	0.5	0.5
2018/6/15 12:00	0.3	0.7	0.5	0.5	0.5
2018/6/22 12:00	0.3	0.7	0.5	0.5	0.5
2018/6/29 12:00	0.4	0.7	0.6	0.6	0.6
2018/7/6 12:00	0.4	0.7	0.6	0.6	0.6
2018/7/13 12:00	0.4	0.8	0.6	0.7	0.6
2018/7/20 12:00	0.4	0.8	0.7	0.7	0.6
2018/7/27 12:00	0.5	0.8	0.7	0.7	0.7
2018/8/3 12:00	0.5	0.8	0.7	0.8	0.7
2018/8/10 12:00	0.5	0.8	0.8	0.8	0.7
2018/8/17 12:00	0.6	0.8	0.8	0.8	0.7
2018/8/24 12:00	0.6	0.9	0.9	0.9	0.8
2018/8/31 12:00	0.6	0.9	0.9	0.9	0.8
2018/9/7 12:00	0.7	0.9	0.9	0.9	0.8
2018/9/14 12:00	0.7	0.9	1.0	1.0	0.8
2018/9/21 12:00	0.7	0.9	0.9	1.0	0.8
2018/9/28 12:00	0.7	0.9	0.9	1.0	0.8
2018/10/5 12:00	0.7	0.9	1.0	1.0	0.9
2018/10/12 12:00	0.7	0.9	0.9	1.0	0.9
2018/10/19 12:00	0.7	0.9	1.0	1.0	0.9
2018/10/26 12:00	0.7	0.9	1.0	1.0	0.9
2018/11/2 12:00	0.7	1.0	1.0	1.1	0.9

[地下水位]

事業区域名	11丁目(民地部)			
計測地点名	11F_1		11F_2	
計測地点地盤高 (T.P.m)	8.36		9.22	
計測日	地下水位 (T.P.m)	地下水位 (GLm)	地下水位 (T.P.m)	地下水位 (GLm)
2017/11/25 12:00	7.41	-0.955	7.32	-1.896
2017/12/25 12:00	6.86	-1.499	6.64	-2.582
2018/1/5 12:00	6.79	-1.574	6.68	-2.544
2018/1/12 12:00	6.75	-1.607	6.68	-2.538
2018/1/19 12:00	6.79	-1.574	6.70	-2.522
2018/1/26 12:00	6.85	-1.510	6.76	-2.456
2018/2/2 12:00	6.85	-1.507	6.79	-2.428
2018/2/9 12:00	6.89	-1.475	6.83	-2.393
2018/2/16 12:00	6.93	-1.432	6.85	-2.371
2018/2/23 12:00	6.94	-1.421	6.86	-2.360
2018/3/2 12:00	7.02	-1.339	6.94	-2.283
2018/3/9 12:00	7.44	-0.919	7.36	-1.864
2018/3/16 12:00	7.41	-0.948	7.34	-1.879
2018/3/23 12:00	7.57	-0.786	7.54	-1.683
2018/3/30 12:00	7.28	-1.082	7.20	-2.022
2018/4/6 12:00	7.37	-0.987	7.27	-1.952
2018/4/13 12:00	7.26	-1.096	7.18	-2.042
2018/4/20 12:00	7.22	-1.137	7.12	-2.097
2018/4/27 12:00	7.23	-1.131	7.09	-2.132
2018/5/4 12:00	7.20	-1.160	7.06	-2.155
2018/5/11 12:00	7.19	-1.170	7.05	-2.168
2018/5/18 12:00	7.17	-1.185	7.03	-2.187
2018/5/25 12:00	7.28	-1.080	7.15	-2.066
2018/6/1 12:00	7.07	-1.291	6.90	-2.322
2018/6/8 12:00	7.08	-1.277	6.91	-2.313
2018/6/15 12:00	6.89	-1.469	6.60	-2.617
2018/6/22 12:00	6.84	-1.524	6.54	-2.684
2018/6/29 12:00	6.76	-1.597	6.52	-2.703
2018/7/6 12:00	6.74	-1.620	6.52	-2.696
2018/7/13 12:00	6.77	-1.586	6.52	-2.697
2018/7/20 12:00	6.74	-1.624	6.52	-2.703
2018/7/27 12:00	6.73	-1.628	6.50	-2.717
2018/8/3 12:00	6.67	-1.692	6.35	-2.868
2018/8/10 12:00	6.64	-1.721	6.33	-2.895
2018/8/17 12:00	6.58	-1.782	6.31	-2.913
2018/8/24 12:00	6.57	-1.794	6.31	-2.914
2018/8/31 12:00	6.55	-1.809	6.29	-2.931
2018/9/7 12:00	6.61	-1.749	6.32	-2.899
2018/9/14 12:00	6.60	-1.761	6.33	-2.895
2018/9/21 12:00	6.70	-1.657	6.38	-2.837
2018/9/28 12:00	6.77	-1.591	6.50	-2.719
2018/10/5 12:00	6.66	-1.703	6.39	-2.826
2018/10/12 12:00	6.63	-1.729	6.35	-2.872
2018/10/19 12:00	6.59	-1.773	6.33	-2.891
2018/10/26 12:00	6.55	-1.807	6.33	-2.887
2018/11/2 12:00	6.50	-1.855	6.32	-2.902
1段階目水位 2018/2/24まで	6.96	-1.40	6.96	-2.26
2段階目水位 2018/5/24まで	6.80	-1.57	6.80	-2.43
最終水位 2018/8/24まで	6.63	-1.73	6.63	-2.59

[地下水位]

事業区域名	11丁目(道路部)							
計測地点名	11E_1		11E_2		11E_3		11E_4	
計測地点地盤高 (T.P.m)	8.42		8.44		8.73		8.71	
計測日	地下水位 (T.P.m)	地下水位 (GLm)	地下水位 (T.P.m)	地下水位 (GLm)	地下水位 (T.P.m)	地下水位 (GLm)	地下水位 (T.P.m)	地下水位 (GLm)
2017/11/25 12:00	7.40	-1.017	7.39	-1.054	7.46	-1.273	7.36	-1.346
2017/12/25 12:00	6.71	-1.711	6.71	-1.733	6.76	-1.967	6.67	-2.036
2018/1/5 12:00	6.75	-1.670	6.75	-1.691	6.80	-1.925	6.71	-1.995
2018/1/12 12:00	6.76	-1.656	6.77	-1.674	6.82	-1.911	6.73	-1.981
2018/1/19 12:00	6.78	-1.636	6.79	-1.655	6.84	-1.892	6.75	-1.964
2018/1/26 12:00	6.85	-1.573	6.85	-1.589	6.90	-1.830	6.81	-1.903
2018/2/2 12:00	6.88	-1.535	6.89	-1.551	6.94	-1.793	6.84	-1.868
2018/2/9 12:00	6.92	-1.499	6.93	-1.514	6.98	-1.754	6.88	-1.830
2018/2/16 12:00	6.94	-1.480	6.94	-1.498	6.99	-1.738	6.90	-1.812
2018/2/23 12:00	6.95	-1.474	6.95	-1.490	7.00	-1.730	6.91	-1.803
2018/3/2 12:00	7.04	-1.383	7.05	-1.392	7.09	-1.641	7.00	-1.712
2018/3/9 12:00	7.38	-1.042	7.38	-1.056	7.43	-1.301	7.33	-1.378
2018/3/16 12:00	7.42	-1.005	7.42	-1.022	7.47	-1.260	7.38	-1.327
2018/3/23 12:00	7.59	-0.831	7.59	-0.846	7.65	-1.084	7.56	-1.151
2018/3/30 12:00	7.27	-1.150	7.27	-1.171	7.32	-1.409	7.24	-1.473
2018/4/6 12:00	7.33	-1.090	7.32	-1.115	7.38	-1.350	7.30	-1.412
2018/4/13 12:00	7.24	-1.179	7.23	-1.206	7.29	-1.439	7.21	-1.500
2018/4/20 12:00	7.19	-1.229	7.19	-1.251	7.24	-1.488	7.16	-1.547
2018/4/27 12:00	7.15	-1.268	7.15	-1.293	7.20	-1.534	7.13	-1.584
2018/5/4 12:00	7.13	-1.293	7.12	-1.317	7.17	-1.561	7.10	-1.607
2018/5/11 12:00	7.11	-1.314	7.11	-1.333	7.15	-1.583	7.09	-1.624
2018/5/18 12:00	7.07	-1.352	7.07	-1.370	7.11	-1.621	7.05	-1.662
2018/5/25 12:00	7.20	-1.216	7.20	-1.235	7.24	-1.491	7.19	-1.525
2018/6/1 12:00	6.93	-1.485	6.94	-1.500	6.97	-1.761	6.92	-1.791
2018/6/8 12:00	6.93	-1.490	6.94	-1.503	6.96	-1.768	6.92	-1.792
2018/6/15 12:00	6.55	-1.867	6.56	-1.875	6.59	-2.145	6.54	-2.171
2018/6/22 12:00	6.52	-1.896	6.54	-1.903	6.56	-2.175	6.51	-2.200
2018/6/29 12:00	6.54	-1.878	6.55	-1.888	6.57	-2.162	6.53	-2.182
2018/7/6 12:00	6.48	-1.944	6.51	-1.929	6.53	-2.201	6.50	-2.210
2018/7/13 12:00	6.47	-1.949	6.50	-1.936	6.52	-2.212	6.49	-2.221
2018/7/20 12:00	6.53	-1.891	6.54	-1.898	6.54	-2.189	6.53	-2.184
2018/7/27 12:00	6.51	-1.915	6.52	-1.923	6.51	-2.221	6.50	-2.206
2018/8/3 12:00	6.28	-2.142	6.31	-2.126	6.32	-2.410	6.30	-2.409
2018/8/10 12:00	6.27	-2.148	6.29	-2.150	6.28	-2.446	6.28	-2.425
2018/8/17 12:00	6.26	-2.156	6.27	-2.165	6.27	-2.457	6.28	-2.432
2018/8/24 12:00	6.26	-2.165	6.26	-2.178	6.26	-2.466	6.27	-2.440
2018/8/31 12:00	6.23	-2.185	6.24	-2.198	6.24	-2.490	6.25	-2.455
2018/9/7 12:00	6.27	-2.154	6.26	-2.178	6.26	-2.471	6.28	-2.433
2018/9/14 12:00	6.28	-2.143	6.27	-2.175	6.26	-2.466	6.28	-2.427
2018/9/21 12:00	6.32	-2.098	6.32	-2.123	6.31	-2.417	6.32	-2.388
2018/9/28 12:00	6.36	-2.062	6.35	-2.087	6.36	-2.373	6.36	-2.349
2018/10/5 12:00	6.33	-2.091	6.33	-2.115	6.32	-2.406	6.33	-2.378
2018/10/12 12:00	6.32	-2.100	6.30	-2.140	6.30	-2.433	6.32	-2.392
2018/10/19 12:00	6.30	-2.121	6.28	-2.156	6.28	-2.446	6.30	-2.408
2018/10/26 12:00	6.30	-2.121	6.27	-2.167	6.29	-2.444	6.30	-2.414
2018/11/2 12:00	6.30	-2.122	6.26	-2.179	6.29	-2.441	6.29	-2.421

[沈下量]

事業区域名 計測地点名	11丁目(民地部)	
	11F_1 沈下量 (cm)	11F_2 沈下量 (cm)
2017/11/25 12:00	0.0	0.0
2017/12/25 12:00	0.2	0.2
2018/1/5 12:00	0.3	0.3
2018/1/12 12:00	0.3	0.3
2018/1/19 12:00	0.3	0.3
2018/1/26 12:00	0.3	0.3
2018/2/2 12:00	0.4	0.3
2018/2/9 12:00	0.4	0.3
2018/2/16 12:00	0.4	0.3
2018/2/23 12:00	0.4	0.4
2018/3/2 12:00	0.4	0.3
2018/3/9 12:00	0.4	0.3
2018/3/16 12:00	0.4	0.3
2018/3/23 12:00	0.4	0.3
2018/3/30 12:00	0.4	0.3
2018/4/6 12:00	0.4	0.3
2018/4/13 12:00	0.4	0.3
2018/4/20 12:00	0.4	0.3
2018/4/27 12:00	0.4	0.3
2018/5/4 12:00	0.4	0.3
2018/5/11 12:00	0.4	0.4
2018/5/18 12:00	0.4	0.4
2018/5/25 12:00	0.4	0.4
2018/6/1 12:00	0.5	0.4
2018/6/8 12:00	0.5	0.4
2018/6/15 12:00	0.5	0.5
2018/6/22 12:00	0.5	0.5
2018/6/29 12:00	0.6	0.5
2018/7/6 12:00	0.6	0.6
2018/7/13 12:00	0.6	0.6
2018/7/20 12:00	0.7	0.6
2018/7/27 12:00	0.7	0.7
2018/8/3 12:00	0.7	0.7
2018/8/10 12:00	0.8	0.7
2018/8/17 12:00	0.8	0.8
2018/8/24 12:00	0.9	0.8
2018/8/31 12:00	0.9	0.8
2018/9/7 12:00	0.9	0.8
2018/9/14 12:00	0.9	0.9
2018/9/21 12:00	1.0	0.9
2018/9/28 12:00	1.0	0.9
2018/10/5 12:00	1.0	0.9
2018/10/12 12:00	1.0	0.9
2018/10/19 12:00	1.0	0.9
2018/10/26 12:00	1.0	1.0
2018/11/2 12:00	1.1	1.0

[沈下量]

事業区域名 計測地点名	11丁目(道路部)				
	11E_1 沈下量 (cm)	11E_2 沈下量 (cm)	11E_3 沈下量 (cm)	11E_4 沈下量 (cm)	11D_1(ポンプ部) 沈下量 (cm)
2017/11/25 12:00	0.0	0.0	0.0	0.0	0.0
2017/12/25 12:00	0.1	0.1	0.1	0.1	0.0
2018/1/5 12:00	0.2	0.1	0.1	0.1	0.1
2018/1/12 12:00	0.2	0.2	0.1	0.2	0.1
2018/1/19 12:00	0.2	0.2	0.2	0.2	0.1
2018/1/26 12:00	0.2	0.2	0.2	0.2	0.1
2018/2/2 12:00	0.2	0.3	0.2	0.2	0.1
2018/2/9 12:00	0.3	0.3	0.2	0.3	0.2
2018/2/16 12:00	0.3	0.3	0.2	0.3	0.2
2018/2/23 12:00	0.3	0.3	0.2	0.3	0.2
2018/3/2 12:00	0.3	0.3	0.2	0.3	0.2
2018/3/9 12:00	0.3	0.4	0.2	0.3	0.2
2018/3/16 12:00	0.3	0.3	0.2	0.3	0.2
2018/3/23 12:00	0.3	0.3	0.2	0.3	0.2
2018/3/30 12:00	0.3	0.3	0.2	0.3	0.3
2018/4/6 12:00	0.3	0.3	0.2	0.3	0.2
2018/4/13 12:00	0.3	0.3	0.2	0.3	0.3
2018/4/20 12:00	0.3	0.3	0.2	0.3	0.3
2018/4/27 12:00	0.3	0.3	0.2	0.3	0.3
2018/5/4 12:00	0.3	0.3	0.2	0.3	0.3
2018/5/11 12:00	0.3	0.4	0.2	0.3	0.3
2018/5/18 12:00	0.3	0.4	0.2	0.3	0.3
2018/5/25 12:00	0.3	0.4	0.2	0.4	0.3
2018/6/1 12:00	0.3	0.4	0.3	0.4	0.3
2018/6/8 12:00	0.3	0.4	0.3	0.4	0.4
2018/6/15 12:00	0.4	0.4	0.3	0.4	0.4
2018/6/22 12:00	0.4	0.5	0.3	0.5	0.4
2018/6/29 12:00	0.4	0.5	0.3	0.5	0.4
2018/7/6 12:00	0.4	0.5	0.3	0.6	0.4
2018/7/13 12:00	0.5	0.6	0.3	0.6	0.4
2018/7/20 12:00	0.5	0.6	0.4	0.6	0.4
2018/7/27 12:00	0.5	0.6	0.4	0.6	0.5
2018/8/3 12:00	0.5	0.7	0.4	0.7	0.5
2018/8/10 12:00	0.5	0.7	0.4	0.7	0.5
2018/8/17 12:00	0.6	0.8	0.5	0.7	0.5
2018/8/24 12:00	0.6	0.8	0.5	0.8	0.6
2018/8/31 12:00	0.6	0.8	0.5	0.8	0.6
2018/9/7 12:00	0.6	0.9	0.5	0.8	0.6
2018/9/14 12:00	0.7	0.9	0.6	0.8	0.7
2018/9/21 12:00	0.7	0.9	0.6	0.8	0.7
2018/9/28 12:00	0.7	0.9	0.6	0.8	0.7
2018/10/5 12:00	0.7	1.0	0.6	0.8	0.7
2018/10/12 12:00	0.7	1.0	0.6	0.8	0.7
2018/10/19 12:00	0.7	1.0	0.6	0.8	0.7
2018/10/26 12:00	0.7	1.0	0.6	0.9	0.7
2018/11/2 12:00	0.7	1.0	0.6	0.9	0.7

[地下水位]

事業区域名	7・12丁目(民地部)		12丁目(民地部)			
計測地点名	12F_1		12F_2		12F_3	
計測地点地盤高 (T.P.m)	8.96		8.78		9.04	
計測日	地下水位 (T.P.m)	地下水位 (GLm)	地下水位 (T.P.m)	地下水位 (GLm)	地下水位 (T.P.m)	地下水位 (GLm)
2017/11/25 12:00	7.30	-1.664	7.25	-1.531	7.16	-1.878
2017/12/25 12:00	6.75	-2.208	6.23	-2.546	6.18	-2.858
2018/1/5 12:00	6.73	-2.233	6.27	-2.508	6.24	-2.800
2018/1/12 12:00	6.71	-2.248	6.31	-2.467	6.27	-2.773
2018/1/19 12:00	6.70	-2.258	6.31	-2.469	6.29	-2.754
2018/1/26 12:00	6.73	-2.231	6.35	-2.430	6.32	-2.716
2018/2/2 12:00	6.72	-2.240	6.38	-2.402	6.35	-2.685
2018/2/9 12:00	6.72	-2.236	6.42	-2.362	6.39	-2.646
2018/2/16 12:00	6.73	-2.232	6.46	-2.318	6.42	-2.621
2018/2/23 12:00	6.69	-2.270	6.46	-2.322	6.44	-2.603
2018/3/2 12:00	6.70	-2.259	6.48	-2.299	6.47	-2.570
2018/3/9 12:00	8.77	-0.187	8.49	-0.288	6.54	-2.503
2018/3/16 12:00	7.19	-1.772	6.76	-2.024	6.76	-2.283
2018/3/23 12:00	8.57	-0.386	7.15	-1.634	6.86	-2.176
2018/3/30 12:00	7.18	-1.779	6.82	-1.964	6.79	-2.251
2018/4/6 12:00	7.19	-1.770	6.91	-1.874	6.89	-2.154
2018/4/13 12:00	7.13	-1.834	6.76	-2.019	6.76	-2.279
2018/4/20 12:00	7.14	-1.817	6.69	-2.093	6.68	-2.363
2018/4/27 12:00	7.26	-1.697	6.70	-2.082	6.68	-2.357
2018/5/4 12:00	7.20	-1.763	6.68	-2.096	6.67	-2.365
2018/5/11 12:00	7.30	-1.655	6.70	-2.083	6.69	-2.352
2018/5/18 12:00	7.30	-1.665	6.70	-2.077	6.69	-2.349
2018/5/25 12:00	7.16	-1.799	6.69	-2.089	6.68	-2.363
2018/6/1 12:00	6.90	-2.057	6.29	-2.495	6.29	-2.752
2018/6/8 12:00	6.96	-1.997	6.31	-2.467	6.30	-2.745
2018/6/15 12:00	6.79	-2.166	6.22	-2.562	6.21	-2.834
2018/6/22 12:00	6.81	-2.154	6.18	-2.596	6.14	-2.901
2018/6/29 12:00	6.79	-2.173	6.15	-2.635	6.13	-2.913
2018/7/6 12:00	6.79	-2.175	6.14	-2.642	6.12	-2.918
2018/7/13 12:00	6.80	-2.157	6.15	-2.630	6.12	-2.921
2018/7/20 12:00	6.82	-2.142	6.17	-2.610	6.12	-2.925
2018/7/27 12:00	6.83	-2.129	6.13	-2.652	6.12	-2.924
2018/8/3 12:00	6.64	-2.323	5.87	-2.914	5.92	-3.120
2018/8/10 12:00	6.62	-2.344	5.79	-2.994	5.92	-3.118
2018/8/17 12:00	6.59	-2.366	5.75	-3.030	5.92	-3.116
2018/8/24 12:00	6.59	-2.369	5.72	-3.057	5.93	-3.110
2018/8/31 12:00	6.60	-2.361	5.71	-3.072	5.93	-3.115
2018/9/7 12:00	6.62	-2.343	5.73	-3.051	5.92	-3.119
2018/9/14 12:00	6.60	-2.357	5.70	-3.085	5.92	-3.116
2018/9/21 12:00	7.81	-1.147	5.87	-2.911	5.93	-3.112
2018/9/28 12:00	7.33	-1.634	5.82	-2.955	5.95	-3.091
2018/10/5 12:00	6.61	-2.346	5.81	-2.973	5.93	-3.109
2018/10/12 12:00	6.64	-2.320	5.74	-3.038	5.93	-3.110
2018/10/19 12:00	6.62	-2.336	5.71	-3.072	5.93	-3.108
2018/10/26 12:00	6.61	-2.351	5.69	-3.087	5.93	-3.110
2018/11/2 12:00	6.60	-2.357	5.69	-3.093	5.93	-3.115
1段階目水位 2018/2/24まで	7.07	-1.890	6.20	-2.580	6.20	-2.840
2段階目水位 2018/5/24まで	6.86	-2.100	6.12	-2.660	6.12	-2.920
最終水位 2018/8/24まで	6.65	-2.320	6.04	-2.740	6.04	-3.000

[地下水位]

事業区域名	7・12丁目(道路部)									
計測地点名	12E_1		12E_2		12E_3		12E_4		12E_5	
計測地点地盤高 (T.P.m)	8.66		8.55		8.50		8.35		8.41	
計測日	地下水位 (T.P.m)	地下水位 (GLm)	地下水位 (T.P.m)	地下水位 (GLm)	地下水位 (T.P.m)	地下水位 (GLm)	地下水位 (T.P.m)	地下水位 (GLm)	地下水位 (T.P.m)	地下水位 (GLm)
2017/11/25 12:00	7.26	-1.399	7.29	-1.263	7.13	-1.373	7.19	-1.156	7.20	-1.212
2017/12/25 12:00	6.69	-1.971	6.71	-1.836	6.16	-2.345	6.23	-2.118	6.21	-2.198
2018/1/5 12:00	6.70	-1.964	6.72	-1.828	6.21	-2.295	6.28	-2.069	6.26	-2.149
2018/1/12 12:00	6.69	-1.973	6.72	-1.835	6.23	-2.270	6.31	-2.045	6.28	-2.127
2018/1/19 12:00	6.66	-1.998	6.69	-1.861	6.25	-2.250	6.33	-2.023	6.31	-2.104
2018/1/26 12:00	6.72	-1.944	6.74	-1.809	6.30	-2.204	6.37	-1.976	6.35	-2.058
2018/2/2 12:00	6.72	-1.942	6.75	-1.800	6.33	-2.173	6.41	-1.944	6.38	-2.026
2018/2/9 12:00	6.72	-1.937	6.75	-1.798	6.36	-2.137	6.44	-1.910	6.42	-1.991
2018/2/16 12:00	6.70	-1.965	6.73	-1.823	6.38	-2.115	6.46	-1.887	6.44	-1.968
2018/2/23 12:00	6.65	-2.011	6.68	-1.868	6.40	-2.099	6.48	-1.870	6.46	-1.951
2018/3/2 12:00	6.73	-1.934	6.76	-1.791	6.45	-2.054	6.52	-1.825	6.50	-1.906
2018/3/9 12:00	7.08	-1.577	7.11	-1.438	6.57	-1.934	6.65	-1.704	6.63	-1.785
2018/3/16 12:00	7.21	-1.447	7.25	-1.302	6.70	-1.795	6.78	-1.568	6.76	-1.647
2018/3/23 12:00	7.38	-1.278	7.42	-1.134	6.84	-1.656	6.92	-1.427	6.90	-1.510
2018/3/30 12:00	7.21	-1.453	7.24	-1.309	6.73	-1.773	6.80	-1.549	6.78	-1.629
2018/4/6 12:00	7.19	-1.468	7.23	-1.324	6.84	-1.658	6.91	-1.436	6.89	-1.516
2018/4/13 12:00	7.15	-1.513	7.18	-1.368	6.62	-1.880	6.70	-1.652	6.68	-1.730
2018/4/20 12:00	7.16	-1.504	7.19	-1.358	6.62	-1.881	6.69	-1.663	6.67	-1.740
2018/4/27 12:00	7.25	-1.410	7.29	-1.264	6.61	-1.891	6.68	-1.667	6.67	-1.741
2018/5/4 12:00	7.20	-1.464	7.23	-1.315	6.61	-1.895	6.68	-1.671	6.67	-1.745
2018/5/11 12:00	7.28	-1.382	7.32	-1.231	6.62	-1.883	6.68	-1.669	6.67	-1.739
2018/5/18 12:00	7.26	-1.401	7.30	-1.251	6.62	-1.880	6.68	-1.671	6.67	-1.738
2018/5/25 12:00	7.14	-1.524	7.18	-1.372	6.60	-1.898	6.66	-1.689	6.66	-1.754
2018/6/1 12:00	6.86	-1.803	6.90	-1.650	6.16	-2.344	6.21	-2.139	6.21	-2.199
2018/6/8 12:00	6.90	-1.758	6.95	-1.603	6.19	-2.307	6.25	-2.104	6.25	-2.162
2018/6/15 12:00	6.71	-1.948	6.75	-1.795	6.05	-2.454	6.10	-2.250	6.11	-2.302
2018/6/22 12:00	6.70	-1.962	6.74	-1.806	6.04	-2.462	6.09	-2.263	6.10	-2.312
2018/6/29 12:00	6.70	-1.956	6.75	-1.797	6.03	-2.469	6.08	-2.267	6.10	-2.313
2018/7/6 12:00	6.70	-1.958	6.75	-1.799	6.04	-2.464	6.08	-2.266	6.10	-2.308
2018/7/13 12:00	6.69	-1.966	6.74	-1.807	6.01	-2.492	6.08	-2.272	6.10	-2.308
2018/7/20 12:00	6.68	-1.979	6.73	-1.818	6.01	-2.490	6.07	-2.277	6.10	-2.308
2018/7/27 12:00	6.68	-1.983	6.73	-1.822	6.04	-2.461	6.07	-2.285	6.10	-2.313
2018/8/3 12:00	6.34	-2.315	6.39	-2.157	5.53	-2.968	5.64	-2.709	5.68	-2.728
2018/8/10 12:00	6.33	-2.330	6.38	-2.173	5.56	-2.944	5.65	-2.701	5.69	-2.718
2018/8/17 12:00	6.32	-2.343	6.37	-2.180	5.56	-2.943	5.63	-2.720	5.68	-2.731
2018/8/24 12:00	6.31	-2.352	6.36	-2.185	5.55	-2.954	5.58	-2.773	5.63	-2.776
2018/8/31 12:00	6.30	-2.356	6.36	-2.188	5.54	-2.957	5.57	-2.781	5.63	-2.782
2018/9/7 12:00	6.31	-2.345	6.37	-2.181	5.57	-2.932	5.57	-2.778	5.63	-2.775
2018/9/14 12:00	6.31	-2.347	6.37	-2.180	5.58	-2.922	5.57	-2.784	5.63	-2.778
2018/9/21 12:00	6.36	-2.295	6.43	-2.124	5.59	-2.912	5.59	-2.760	5.66	-2.754
2018/9/28 12:00	6.36	-2.295	6.43	-2.124	5.59	-2.915	5.62	-2.731	5.68	-2.727
2018/10/5 12:00	6.36	-2.302	6.42	-2.128	5.57	-2.934	5.62	-2.729	5.68	-2.726
2018/10/12 12:00	6.33	-2.325	6.40	-2.149	5.57	-2.930	5.58	-2.768	5.65	-2.764
2018/10/19 12:00	6.31	-2.349	6.38	-2.171	5.57	-2.928	5.58	-2.774	5.64	-2.770
2018/10/26 12:00	6.31	-2.355	6.38	-2.174	5.59	-2.914	5.59	-2.764	5.65	-2.760
2018/11/2 12:00	6.31	-2.348	6.38	-2.166	5.60	-2.903	5.60	-2.749	5.66	-2.745

[地下水位]

事業区域名	12丁目(道路部)									
計測地点名	12E_6		12E_7		12E_8		12E_9		12E_10	
計測地点地盤高 (T.P.m)	8.50		8.58		8.72		8.65		8.51	
計測日	地下水位 (T.P.m)	地下水位 (GLm)	地下水位 (T.P.m)	地下水位 (GLm)	地下水位 (T.P.m)	地下水位 (GLm)	地下水位 (T.P.m)	地下水位 (GLm)	地下水位 (T.P.m)	地下水位 (GLm)
2017/11/25 12:00	7.20	-1.303	7.22	-1.357	7.14	-1.584	7.16	-1.493	7.20	-1.310
2017/12/25 12:00	6.25	-2.255	6.26	-2.315	6.17	-2.551	6.19	-2.464	6.24	-2.273
2018/1/5 12:00	6.30	-2.200	6.31	-2.265	6.22	-2.501	6.24	-2.413	6.29	-2.222
2018/1/12 12:00	6.32	-2.176	6.34	-2.240	6.24	-2.477	6.26	-2.390	6.31	-2.197
2018/1/19 12:00	6.35	-2.152	6.36	-2.217	6.27	-2.455	6.28	-2.368	6.33	-2.177
2018/1/26 12:00	6.40	-2.098	6.41	-2.170	6.31	-2.411	6.33	-2.322	6.38	-2.132
2018/2/2 12:00	6.44	-2.063	6.44	-2.139	6.34	-2.381	6.36	-2.291	6.41	-2.101
2018/2/9 12:00	6.48	-2.023	6.48	-2.104	6.37	-2.347	6.39	-2.259	6.44	-2.067
2018/2/16 12:00	6.50	-1.999	6.50	-2.080	6.40	-2.324	6.41	-2.238	6.47	-2.044
2018/2/23 12:00	6.52	-1.981	6.52	-2.063	6.41	-2.308	6.43	-2.220	6.48	-2.028
2018/3/2 12:00	6.57	-1.935	6.56	-2.015	6.46	-2.263	6.47	-2.180	6.53	-1.983
2018/3/9 12:00	6.68	-1.815	6.68	-1.896	6.57	-2.146	6.59	-2.062	6.64	-1.865
2018/3/16 12:00	6.82	-1.677	6.82	-1.758	6.71	-2.008	6.73	-1.922	6.78	-1.725
2018/3/23 12:00	6.96	-1.540	6.96	-1.618	6.85	-1.869	6.87	-1.784	6.92	-1.587
2018/3/30 12:00	6.84	-1.659	6.84	-1.738	6.73	-1.988	6.75	-1.904	6.80	-1.706
2018/4/6 12:00	6.95	-1.547	6.96	-1.622	6.85	-1.873	6.86	-1.789	6.92	-1.592
2018/4/13 12:00	6.74	-1.764	6.74	-1.836	6.63	-2.090	6.65	-2.003	6.70	-1.805
2018/4/20 12:00	6.72	-1.778	6.73	-1.847	6.62	-2.097	6.64	-2.012	6.70	-1.814
2018/4/27 12:00	6.72	-1.783	6.73	-1.850	6.62	-2.100	6.63	-2.015	6.69	-1.818
2018/5/4 12:00	6.71	-1.789	6.73	-1.852	6.61	-2.105	6.63	-2.019	6.69	-1.822
2018/5/11 12:00	6.71	-1.790	6.73	-1.848	6.62	-2.100	6.64	-2.013	6.69	-1.817
2018/5/18 12:00	6.71	-1.794	6.73	-1.847	6.62	-2.100	6.64	-2.014	6.69	-1.820
2018/5/25 12:00	6.69	-1.813	6.72	-1.863	6.60	-2.118	6.62	-2.032	6.67	-1.836
2018/6/1 12:00	6.24	-2.264	6.27	-2.307	6.16	-2.564	6.17	-2.478	6.23	-2.282
2018/6/8 12:00	6.27	-2.232	6.31	-2.269	6.19	-2.528	6.21	-2.441	6.26	-2.247
2018/6/15 12:00	6.12	-2.378	6.17	-2.410	6.05	-2.672	6.07	-2.584	6.12	-2.387
2018/6/22 12:00	6.11	-2.392	6.16	-2.420	6.04	-2.681	6.06	-2.595	6.11	-2.397
2018/6/29 12:00	6.10	-2.395	6.16	-2.421	6.04	-2.683	6.05	-2.598	6.11	-2.401
2018/7/6 12:00	6.10	-2.395	6.16	-2.415	6.04	-2.681	6.06	-2.595	6.12	-2.394
2018/7/13 12:00	6.10	-2.402	6.16	-2.415	6.03	-2.685	6.05	-2.597	6.11	-2.397
2018/7/20 12:00	6.09	-2.409	6.17	-2.415	6.03	-2.688	6.05	-2.599	6.12	-2.395
2018/7/27 12:00	6.08	-2.419	6.16	-2.418	6.03	-2.695	6.05	-2.604	6.11	-2.396
2018/8/3 12:00	5.65	-2.845	5.74	-2.837	5.61	-3.108	5.63	-3.025	5.70	-2.814
2018/8/10 12:00	5.66	-2.837	5.75	-2.825	5.63	-3.090	5.64	-3.015	5.71	-2.797
2018/8/17 12:00	5.64	-2.859	5.74	-2.837	5.61	-3.108	5.62	-3.032	5.70	-2.805
2018/8/24 12:00	5.59	-2.910	5.70	-2.884	5.57	-3.150	5.57	-3.082	5.66	-2.851
2018/8/31 12:00	5.58	-2.921	5.69	-2.890	5.56	-3.156	5.56	-3.091	5.66	-2.848
2018/9/7 12:00	5.58	-2.919	5.69	-2.889	5.57	-3.152	5.56	-3.090	5.68	-2.832
2018/9/14 12:00	5.58	-2.923	5.69	-2.891	5.56	-3.159	5.56	-3.094	5.68	-2.825
2018/9/21 12:00	5.60	-2.897	5.71	-2.865	5.58	-3.139	5.58	-3.070	5.71	-2.795
2018/9/28 12:00	5.63	-2.868	5.74	-2.839	5.60	-3.118	5.61	-3.041	5.74	-2.766
2018/10/5 12:00	5.63	-2.866	5.75	-2.834	5.60	-3.120	5.61	-3.040	5.75	-2.760
2018/10/12 12:00	5.60	-2.903	5.71	-2.872	5.56	-3.160	5.57	-3.078	5.72	-2.791
2018/10/19 12:00	5.59	-2.906	5.70	-2.876	5.56	-3.164	5.56	-3.085	5.71	-2.795
2018/10/26 12:00	5.61	-2.894	5.72	-2.864	5.56	-3.159	5.58	-3.073	5.73	-2.782
2018/11/2 12:00	5.62	-2.876	5.73	-2.849	5.57	-3.147	5.59	-3.059	5.75	-2.763

[沈下量]

事業区域名 計測地点名	7・12丁目(民地部)	12丁目(民地部)	
	12F_1 沈下量 (cm)	12F_2 沈下量 (cm)	12F_3 沈下量 (cm)
計測日			
2017/11/25 12:00	0.0	0.0	0.0
2017/12/25 12:00	0.1	0.2	0.1
2018/1/5 12:00	0.2	0.3	0.1
2018/1/12 12:00	0.2	0.3	0.1
2018/1/19 12:00	0.3	0.4	0.2
2018/1/26 12:00	0.3	0.4	0.2
2018/2/2 12:00	0.3	0.4	0.2
2018/2/9 12:00	0.3	0.4	0.2
2018/2/16 12:00	0.4	0.4	0.2
2018/2/23 12:00	0.4	0.5	0.3
2018/3/2 12:00	0.4	0.5	0.3
2018/3/9 12:00	0.4	0.5	0.3
2018/3/16 12:00	0.4	0.5	0.3
2018/3/23 12:00	0.4	0.5	0.3
2018/3/30 12:00	0.4	0.5	0.3
2018/4/6 12:00	0.4	0.5	0.3
2018/4/13 12:00	0.4	0.5	0.3
2018/4/20 12:00	0.4	0.5	0.3
2018/4/27 12:00	0.4	0.5	0.2
2018/5/4 12:00	0.4	0.5	0.2
2018/5/11 12:00	0.4	0.5	0.2
2018/5/18 12:00	0.4	0.5	0.2
2018/5/25 12:00	0.4	0.5	0.2
2018/6/1 12:00	0.5	0.5	0.2
2018/6/8 12:00	0.5	0.5	0.2
2018/6/15 12:00	0.5	0.6	0.2
2018/6/22 12:00	0.5	0.6	0.2
2018/6/29 12:00	0.6	0.6	0.2
2018/7/6 12:00	0.6	0.6	0.2
2018/7/13 12:00	0.6	0.6	0.2
2018/7/20 12:00	0.6	0.6	0.2
2018/7/27 12:00	0.7	0.7	0.2
2018/8/3 12:00	0.7	0.7	0.2
2018/8/10 12:00	0.7	0.7	0.2
2018/8/17 12:00	0.8	0.7	0.2
2018/8/24 12:00	0.8	0.7	0.3
2018/8/31 12:00	0.9	0.8	0.3
2018/9/7 12:00	0.9	0.8	0.3
2018/9/14 12:00	0.9	0.9	0.4
2018/9/21 12:00	0.9	0.9	0.4
2018/9/28 12:00	0.9	0.9	0.4
2018/10/5 12:00	0.9	0.9	0.4
2018/10/12 12:00	0.9	0.9	0.4
2018/10/19 12:00	0.9	0.9	0.4
2018/10/26 12:00	1.0	1.0	0.4
2018/11/2 12:00	1.0	1.0	0.4

[沈下量]

事業区域名 計測地点名	7・12丁目(道路部)				12丁目(道路部)					
	12E_1 沈下量 (cm)	12E_2 沈下量 (cm)	12E_3 沈下量 (cm)	12E_4 沈下量 (cm)	12E_5 沈下量 (cm)	12E_6 沈下量 (cm)	12E_7 沈下量 (cm)	12E_8 沈下量 (cm)	12E_9 沈下量 (cm)	12E_10 沈下量 (cm)
2017/11/25 12:00	0.0	0.0	0.0	0.0	0.0	0.0	0.0	0.0	0.0	0.0
2017/12/25 12:00	0.1	0.1	0.1	0.2	0.2	0.2	0.3	0.1	0.2	0.2
2018/1/5 12:00	0.2	0.2	0.2	0.2	0.3	0.3	0.3	0.1	0.2	0.3
2018/1/12 12:00	0.2	0.2	0.2	0.3	0.3	0.3	0.4	0.1	0.3	0.3
2018/1/19 12:00	0.2	0.2	0.3	0.3	0.3	0.4	0.4	0.2	0.3	0.4
2018/1/26 12:00	0.2	0.2	0.3	0.3	0.4	0.4	0.4	0.2	0.3	0.4
2018/2/2 12:00	0.3	0.3	0.3	0.4	0.4	0.5	0.5	0.2	0.3	0.5
2018/2/9 12:00	0.3	0.3	0.3	0.4	0.4	0.5	0.5	0.2	0.4	0.5
2018/2/16 12:00	0.3	0.3	0.3	0.4	0.4	0.5	0.5	0.2	0.4	0.5
2018/2/23 12:00	0.3	0.3	0.4	0.4	0.4	0.6	0.5	0.2	0.4	0.5
2018/3/2 12:00	0.3	0.3	0.4	0.4	0.5	0.6	0.5	0.2	0.4	0.5
2018/3/9 12:00	0.4	0.4	0.4	0.4	0.5	0.6	0.5	0.3	0.4	0.5
2018/3/16 12:00	0.4	0.4	0.7	0.4	0.5	0.6	0.5	0.3	0.3	0.4
2018/3/23 12:00	0.3	0.3	0.7	0.4	0.5	0.6	0.5	0.3	0.3	0.4
2018/3/30 12:00	0.3	0.4	0.7	0.4	0.5	0.6	0.5	0.3	0.3	0.4
2018/4/6 12:00	0.3	0.3	0.7	0.4	0.5	0.6	0.5	0.2	0.3	0.4
2018/4/13 12:00	0.4	0.4	0.7	0.4	0.5	0.6	0.5	0.3	0.4	0.5
2018/4/20 12:00	0.4	0.4	0.7	0.4	0.5	0.6	0.5	0.3	0.4	0.5
2018/4/27 12:00	0.4	0.4	0.7	0.5	0.5	0.6	0.5	0.3	0.4	0.4
2018/5/4 12:00	0.4	0.4	0.7	0.5	0.5	0.7	0.5	0.3	0.4	0.4
2018/5/11 12:00	0.4	0.4	0.8	0.5	0.5	0.7	0.5	0.3	0.3	0.4
2018/5/18 12:00	0.4	0.4	0.8	0.5	0.5	0.7	0.5	0.3	0.3	0.4
2018/5/25 12:00	0.4	0.4	0.8	0.5	0.5	0.7	0.5	0.3	0.3	0.4
2018/6/1 12:00	0.4	0.4	0.8	0.5	0.6	0.7	0.6	0.3	0.3	0.4
2018/6/8 12:00	0.5	0.4	0.8	0.6	0.6	0.8	0.6	0.3	0.3	0.4
2018/6/15 12:00	0.5	0.4	0.8	0.6	0.6	0.8	0.6	0.3	0.4	0.4
2018/6/22 12:00	0.5	0.5	0.8	0.6	0.6	0.8	0.6	0.3	0.4	0.5
2018/6/29 12:00	0.5	0.5	0.8	0.6	0.7	0.9	0.6	0.3	0.4	0.5
2018/7/6 12:00	0.5	0.5	0.8	0.7	0.7	0.9	0.7	0.3	0.4	0.5
2018/7/13 12:00	0.6	0.5	0.9	0.7	0.7	1.0	0.7	0.3	0.4	0.5
2018/7/20 12:00	0.6	0.5	0.9	0.8	0.8	1.0	0.7	0.4	0.5	0.6
2018/7/27 12:00	0.6	0.6	0.9	0.8	0.8	1.0	0.7	0.4	0.5	0.6
2018/8/3 12:00	0.7	0.6	0.9	0.8	0.9	1.1	0.8	0.4	0.5	0.6
2018/8/10 12:00	0.7	0.6	1.0	0.9	0.9	1.2	0.8	0.4	0.5	0.6
2018/8/17 12:00	0.7	0.7	1.0	0.9	1.0	1.2	0.8	0.4	0.5	0.7
2018/8/24 12:00	0.8	0.7	1.0	1.0	1.0	1.3	0.9	0.4	0.6	0.7
2018/8/31 12:00	0.8	0.8	1.1	1.0	1.1	1.4	0.9	0.4	0.6	0.7
2018/9/7 12:00	0.8	0.8	1.1	1.1	1.1	1.4	0.9	0.4	0.6	0.7
2018/9/14 12:00	0.8	0.8	1.1	1.1	1.1	1.5	1.0	0.4	0.6	0.8
2018/9/21 12:00	0.8	0.8	1.1	1.1	1.2	1.5	1.0	0.4	0.6	0.8
2018/9/28 12:00	0.8	0.8	1.1	1.1	1.2	1.5	1.0	0.4	0.6	0.8
2018/10/5 12:00	0.8	0.8	1.1	1.1	1.2	1.6	1.0	0.4	0.6	0.8
2018/10/12 12:00	0.8	0.7	1.1	1.1	1.2	1.6	1.0	0.4	0.6	0.8
2018/10/19 12:00	0.8	0.8	1.1	1.2	1.2	1.6	1.0	0.4	0.7	0.9
2018/10/26 12:00	0.8	0.8	1.1	1.2	1.2	1.6	1.0	0.5	0.7	0.9
2018/11/2 12:00	0.8	0.8	1.2	1.2	1.2	1.7	1.1	0.5	0.8	1.0

[沈下量]

事業区域名	
計測地点名	12D_1(ポンプ部)
計測日	沈下量 (cm)
2017/11/25 12:00	0.0
2017/12/25 12:00	0.1
2018/1/5 12:00	0.2
2018/1/12 12:00	0.2
2018/1/19 12:00	0.2
2018/1/26 12:00	0.2
2018/2/2 12:00	0.2
2018/2/9 12:00	0.3
2018/2/16 12:00	0.3
2018/2/23 12:00	0.3
2018/3/2 12:00	0.3
2018/3/9 12:00	0.4
2018/3/16 12:00	0.5
2018/3/23 12:00	0.5
2018/3/30 12:00	0.5
2018/4/6 12:00	0.5
2018/4/13 12:00	0.5
2018/4/20 12:00	0.5
2018/4/27 12:00	0.6
2018/5/4 12:00	0.6
2018/5/11 12:00	0.6
2018/5/18 12:00	0.6
2018/5/25 12:00	0.6
2018/6/1 12:00	0.6
2018/6/8 12:00	0.6
2018/6/15 12:00	0.6
2018/6/22 12:00	0.6
2018/6/29 12:00	0.7
2018/7/6 12:00	0.7
2018/7/13 12:00	0.7
2018/7/20 12:00	0.7
2018/7/27 12:00	0.8
2018/8/3 12:00	0.8
2018/8/10 12:00	0.9
2018/8/17 12:00	0.9
2018/8/24 12:00	0.9
2018/8/31 12:00	0.9
2018/9/7 12:00	0.9
2018/9/14 12:00	0.9
2018/9/21 12:00	0.9
2018/9/28 12:00	0.9
2018/10/5 12:00	0.9
2018/10/12 12:00	0.9
2018/10/19 12:00	0.9
2018/10/26 12:00	1.0
2018/11/2 12:00	1.0

[地下水位]

事業区域名	対策範囲外									
計測地点名	4B_1		5W_1		8W_2		9B_1		10B_1	
計測地点地盤高 (T.P.m)	9.16		9.26		9.14		8.73		9.28	
計測日	地下水位 (T.P.m)	地下水位 (GLm)	地下水位 (T.P.m)	地下水位 (GLm)	地下水位 (T.P.m)	地下水位 (GLm)	地下水位 (T.P.m)	地下水位 (GLm)	地下水位 (T.P.m)	地下水位 (GLm)
2017/11/25 12:00	8.22	-0.936	8.67	-0.589	8.61	-0.527	7.67	-1.061	7.29	-1.992
2017/12/25 12:00	7.91	-1.255	8.51	-0.750	8.37	-0.768	7.23	-1.501	7.08	-2.198
2018/1/5 12:00	7.78	-1.377	8.38	-0.878	8.31	-0.828	7.08	-1.655	6.98	-2.299
2018/1/12 12:00	7.73	-1.428	8.35	-0.908	8.28	-0.863	6.99	-1.735	6.95	-2.334
2018/1/19 12:00	7.70	-1.464	8.39	-0.870	8.25	-0.893	6.96	-1.767	6.94	-2.339
2018/1/26 12:00	7.82	-1.339	8.56	-0.698	8.24	-0.904	7.23	-1.500	7.09	-2.186
2018/2/2 12:00	7.86	-1.300	8.73	-0.535	8.30	-0.840	7.25	-1.476	7.05	-2.232
2018/2/9 12:00	7.78	-1.384	8.61	-0.649	8.37	-0.767	7.28	-1.447	7.06	-2.221
2018/2/16 12:00	7.74	-1.420	8.53	-0.727	8.33	-0.810	7.19	-1.538	7.00	-2.276
2018/2/23 12:00	7.69	-1.471	8.47	-0.794	8.28	-0.863	7.06	-1.666	6.94	-2.341
2018/3/2 12:00	7.82	-1.340	8.75	-0.515	8.46	-0.676	7.35	-1.383	7.09	-2.190
2018/3/9 12:00	8.22	-0.944	8.94	-0.319	9.09	-0.047	8.28	-0.447	7.25	-2.034
2018/3/16 12:00	8.24	-0.919	8.68	-0.581	8.84	-0.302	7.91	-0.822	7.36	-1.916
2018/3/23 12:00	8.40	-0.757	8.76	-0.496	8.99	-0.154	8.24	-0.491	7.45	-1.828
2018/3/30 12:00	8.26	-0.898	8.62	-0.637	8.70	-0.437	7.88	-0.852	7.34	-1.943
2018/4/6 12:00	8.18	-0.977	8.50	-0.762	8.52	-0.623	7.72	-1.008	7.28	-2.004
2018/4/13 12:00	8.06	-1.095	8.35	-0.906	8.38	-0.764	7.55	-1.181	7.16	-2.120
2018/4/20 12:00	8.06	-1.095	8.44	-0.818	8.30	-0.835	7.55	-1.179	7.23	-2.048
2018/4/27 12:00	8.27	-0.893	8.72	-0.536	8.41	-0.734	7.83	-0.903	7.38	-1.905
2018/5/4 12:00	8.26	-0.904	8.61	-0.651	8.28	-0.856	7.72	-1.013	7.38	-1.895
2018/5/11 12:00	8.40	-0.763	8.73	-0.525	8.40	-0.744	7.96	-0.772	7.40	-1.876
2018/5/18 12:00	8.40	-0.762	8.61	-0.650	8.41	-0.732	7.88	-0.851	7.45	-1.830
2018/5/25 12:00	8.33	-0.828	8.49	-0.766	8.30	-0.843	7.78	-0.948	7.42	-1.862
2018/6/1 12:00	8.34	-0.824	8.62	-0.638	8.22	-0.916	7.76	-0.969	7.41	-1.875
2018/6/8 12:00	8.28	-0.879	8.48	-0.780	8.16	-0.977	7.62	-1.114	7.36	-1.923
2018/6/15 12:00	8.31	-0.851	8.64	-0.622	8.14	-0.997	7.75	-0.979	7.36	-1.916
2018/6/22 12:00	8.35	-0.806	8.73	-0.528	8.29	-0.848	7.92	-0.808	7.41	-1.872
2018/6/29 12:00	8.25	-0.911	8.53	-0.726	8.26	-0.881	7.74	-0.993	7.34	-1.937
2018/7/6 12:00	8.25	-0.911	8.43	-0.830	8.18	-0.959	7.67	-1.062	7.33	-1.948
2018/7/13 12:00	8.22	-0.938	8.41	-0.849	8.12	-1.017	7.67	-1.064	7.35	-1.926
2018/7/20 12:00	8.14	-1.021	8.18	-1.081	8.05	-1.086	7.46	-1.266	7.32	-1.957
2018/7/27 12:00	8.08	-1.083	8.03	-1.230	7.98	-1.156	7.34	-1.391	7.32	-1.959
2018/8/3 12:00	8.19	-0.970	8.34	-0.923	7.96	-1.176	7.55	-1.178	7.37	-1.913
2018/8/10 12:00	8.18	-0.978	8.42	-0.841	7.94	-1.203	7.58	-1.147	7.38	-1.905
2018/8/17 12:00	8.08	-1.082	8.20	-1.060	7.90	-1.240	7.39	-1.345	7.25	-2.029
2018/8/24 12:00	8.00	-1.164	8.04	-1.215	7.86	-1.277	7.23	-1.495	7.15	-2.127
2018/8/31 12:00	7.93	-1.232	8.00	-1.261	7.83	-1.311	7.22	-1.508	7.12	-2.162
2018/9/7 12:00	8.20	-0.958	8.62	-0.641	7.94	-1.199	7.66	-1.069	7.40	-1.883
2018/9/14 12:00	8.22	-0.944	8.75	-0.513	7.98	-1.159	7.71	-1.019	7.38	-1.902
2018/9/21 12:00	8.38	-0.778	8.93	-0.331	8.13	-1.012	8.25	-0.476	7.43	-1.846
2018/9/28 12:00	8.53	-0.625	8.76	-0.499	8.79	-0.351	8.27	-0.458	7.56	-1.725
2018/10/5 12:00	8.49	-0.671	8.68	-0.585	8.78	-0.355	8.01	-0.723	7.49	-1.788
2018/10/12 12:00	8.33	-0.834	8.59	-0.669	8.62	-0.520	7.82	-0.910	7.38	-1.905
2018/10/19 12:00	8.22	-0.938	8.59	-0.672	8.55	-0.595	7.71	-1.021	7.30	-1.977
2018/10/26 12:00	8.12	-1.038	8.54	-0.718	8.45	-0.692	7.55	-1.176	7.24	-2.042
2018/11/2 12:00	8.05	-1.112	8.51	-0.755	8.38	-0.758	7.49	-1.240	7.20	-2.076

[地下水位]

事業区域名	11B_1		11B_2		12W_6		12W_8	
計測地点名								
計測地点地盤高 (T.P.m)	8.65		8.38		8.71		8.43	
計測日	地下水位 (T.P.m)	地下水位 (GLm)	地下水位 (T.P.m)	地下水位 (GLm)	地下水位 (T.P.m)	地下水位 (GLm)	地下水位 (T.P.m)	地下水位 (GLm)
2017/11/25 12:00	6.99	-1.662	6.13	-2.250	7.61	-1.105	7.12	-1.310
2017/12/25 12:00	6.73	-1.918	6.08	-2.300	7.32	-1.394	6.88	-1.549
2018/1/5 12:00	6.60	-2.055	6.07	-2.308	7.24	-1.468	6.79	-1.638
2018/1/12 12:00	6.54	-2.115	6.07	-2.312	7.21	-1.498	6.75	-1.679
2018/1/19 12:00	6.52	-2.134	6.07	-2.308	7.18	-1.526	6.75	-1.678
2018/1/26 12:00	6.75	-1.900	6.09	-2.291	7.23	-1.479	6.83	-1.603
2018/2/2 12:00	6.68	-1.970	6.10	-2.281	7.23	-1.479	6.81	-1.621
2018/2/9 12:00	6.85	-1.803	6.09	-2.292	7.28	-1.427	6.78	-1.649
2018/2/16 12:00	6.81	-1.841	6.08	-2.296	7.26	-1.449	6.75	-1.681
2018/2/23 12:00	6.73	-1.925	6.09	-2.289	7.22	-1.492	6.73	-1.705
2018/3/2 12:00	7.07	-1.582	6.12	-2.260	7.45	-1.259	6.83	-1.598
2018/3/9 12:00	7.59	-1.057	6.39	-1.985	8.02	-0.692	7.64	-0.789
2018/3/16 12:00	7.29	-1.365	6.22	-2.158	7.77	-0.943	7.17	-1.264
2018/3/23 12:00	7.41	-1.242	6.33	-2.048	7.89	-0.818	7.38	-1.052
2018/3/30 12:00	7.17	-1.485	6.23	-2.152	7.74	-0.969	7.17	-1.259
2018/4/6 12:00	7.13	-1.517	6.23	-2.150	7.67	-1.039	7.11	-1.319
2018/4/13 12:00	7.02	-1.628	6.15	-2.230	7.55	-1.164	7.03	-1.403
2018/4/20 12:00	7.04	-1.614	6.19	-2.192	7.52	-1.193	7.02	-1.409
2018/4/27 12:00	7.35	-1.300	6.30	-2.083	7.72	-0.988	7.14	-1.293
2018/5/4 12:00	7.22	-1.434	6.31	-2.068	7.62	-1.093	7.10	-1.334
2018/5/11 12:00	7.34	-1.311	6.43	-1.946	7.81	-0.898	7.23	-1.198
2018/5/18 12:00	7.23	-1.424	6.35	-2.025	7.78	-0.930	7.19	-1.237
2018/5/25 12:00	7.18	-1.469	6.33	-2.050	7.67	-1.044	7.13	-1.300
2018/6/1 12:00	7.27	-1.385	6.41	-1.974	7.64	-1.066	7.12	-1.310
2018/6/8 12:00	7.18	-1.473	6.26	-2.122	7.55	-1.164	7.07	-1.358
2018/6/15 12:00	7.23	-1.419	6.28	-2.100	7.55	-1.164	7.11	-1.325
2018/6/22 12:00	7.29	-1.359	6.41	-1.973	7.71	-1.004	7.15	-1.276
2018/6/29 12:00	7.17	-1.478	6.22	-2.164	7.55	-1.162	7.08	-1.353
2018/7/6 12:00	7.13	-1.522	6.27	-2.109	7.51	-1.195	7.09	-1.338
2018/7/13 12:00	7.19	-1.465	6.23	-2.146	7.44	-1.268	7.03	-1.403
2018/7/20 12:00	7.10	-1.550	6.24	-2.144	7.37	-1.339	6.95	-1.477
2018/7/27 12:00	7.04	-1.607	6.25	-2.129	7.33	-1.382	6.90	-1.528
2018/8/3 12:00	7.22	-1.427	6.22	-2.163	7.38	-1.333	7.01	-1.420
2018/8/10 12:00	7.24	-1.411	6.22	-2.165	7.35	-1.365	7.01	-1.425
2018/8/17 12:00	7.11	-1.539	6.23	-2.151	7.24	-1.470	6.90	-1.533
2018/8/24 12:00	7.01	-1.644	6.17	-2.211	7.16	-1.549	6.83	-1.604
2018/8/31 12:00	6.98	-1.674	6.18	-2.199	7.11	-1.604	6.79	-1.640
2018/9/7 12:00	7.27	-1.375	6.17	-2.210	7.35	-1.359	7.00	-1.428
2018/9/14 12:00	7.25	-1.397	6.17	-2.207	7.40	-1.311	7.06	-1.369
2018/9/21 12:00	7.47	-1.178	6.30	-2.084	7.88	-0.827	7.41	-1.020
2018/9/28 12:00	7.37	-1.277	6.50	-1.882	7.89	-0.820	7.41	-1.020
2018/10/5 12:00	7.23	-1.424	6.15	-2.226	7.77	-0.942	7.24	-1.191
2018/10/12 12:00	7.13	-1.518	6.07	-2.312	7.64	-1.070	7.12	-1.311
2018/10/19 12:00	7.09	-1.556	6.06	-2.321	7.55	-1.157	7.05	-1.381
2018/10/26 12:00	7.01	-1.642	6.05	-2.326	7.45	-1.263	6.98	-1.454
2018/11/2 12:00	6.98	-1.670	6.05	-2.332	7.38	-1.328	6.93	-1.501