

目 次

1. 概況	1
2. 観測状況一覧	2
3. 地下水位・沈下量・降水量グラフ（4丁目）	3
地下水位・沈下量・降水量グラフ（6丁目）	4
地下水位・沈下量・降水量グラフ（7・12丁目）	5
地下水位・沈下量・降水量グラフ（8丁目）	6
地下水位・沈下量・降水量グラフ（10丁目）	7
地下水位・沈下量・降水量グラフ（11丁目）	8
地下水位・沈下量・降水量グラフ（12丁目）	9
地下水位・降水量グラフ（対象範囲外）	10
4. 地下水位・沈下量データ（4丁目）	11
地下水位・沈下量データ（6丁目）	15
地下水位・沈下量データ（7・12丁目）	19
地下水位・沈下量データ（8丁目）	23
地下水位・沈下量データ（10丁目）	27
地下水位・沈下量データ（11丁目）	31
地下水位・沈下量データ（12丁目）	35
地下水位データ（対象範囲外）	41

[概況]

[測定日]

2019年2月8日

[概況]

前回同様、水位につきましては、一部民地部を除き、目標水位までの低下が確認されております。沈下に対しても第17回委員会において設定された一次管理値沈下量4cm以下の状態であり、問題はありません。一部民地部においては目標水位まで低下していない状態ですが、粘性土層が堆積している箇所等であるため、液状化に対しては所定の安全性が確保された状態にあります。

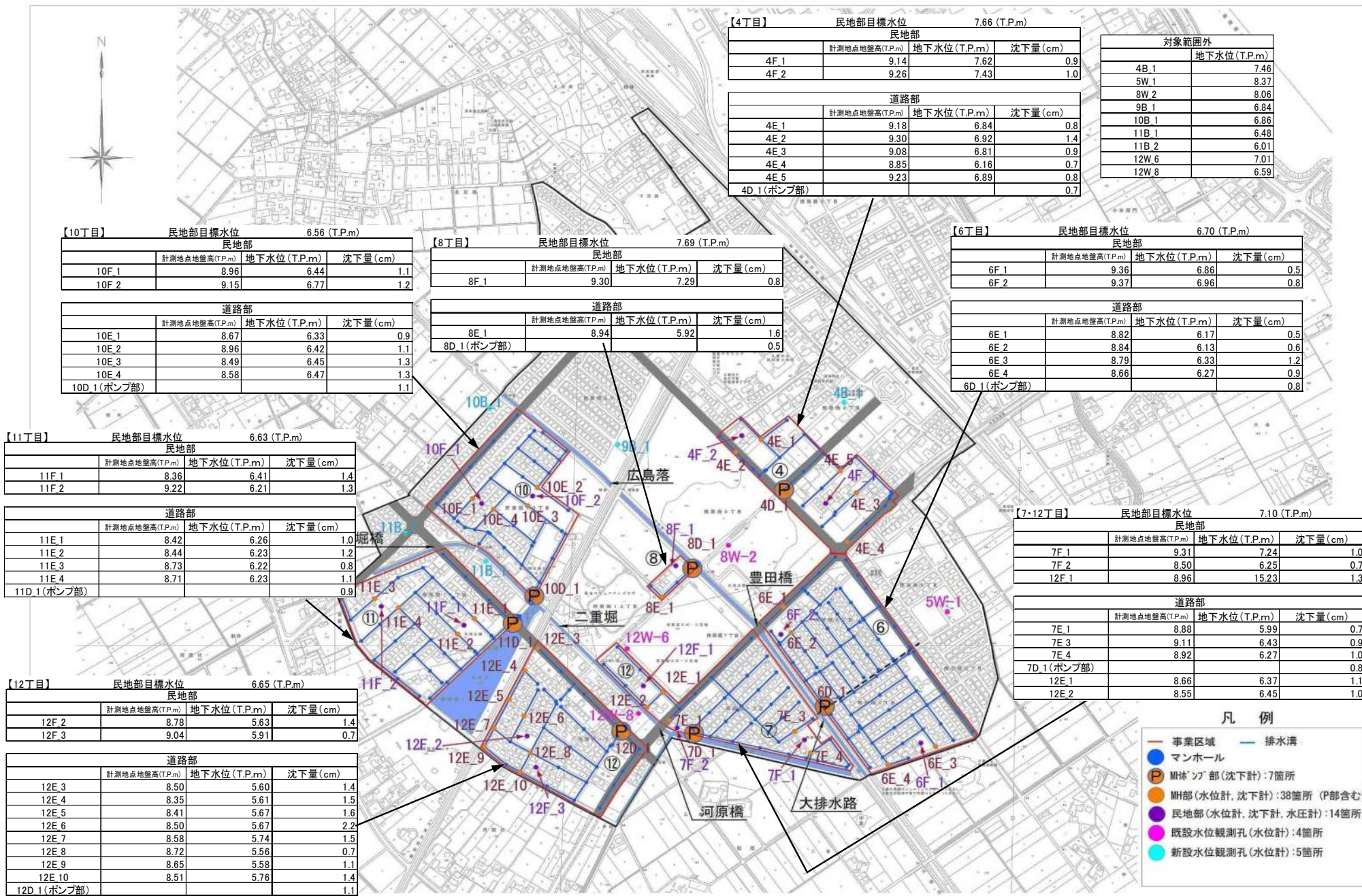
なお、9B_1の機器の入れ替えは完了しましたが、12F_1水位データについては現地確認の結果、異常値を示しており、機器故障となっておりますので、機器入れ替えを後日行います。

その他地点についても引き続き、水位状況、沈下状況を監視してまいります。

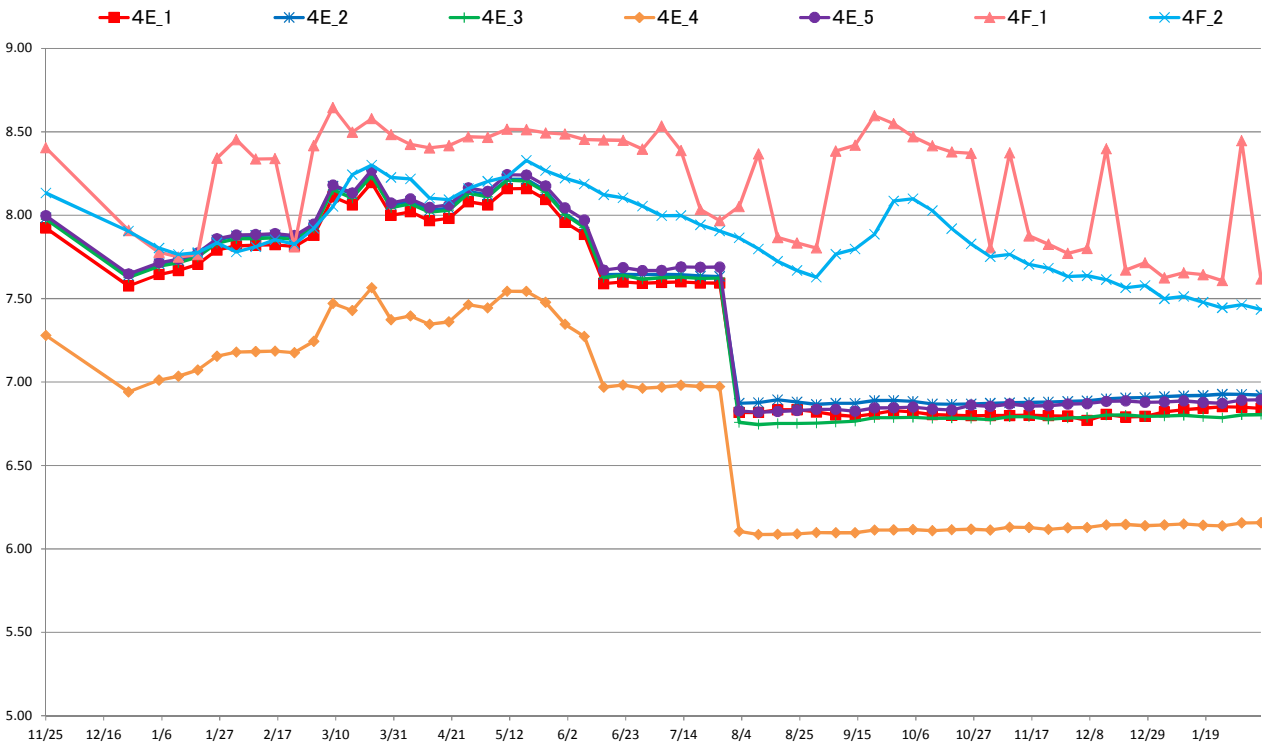
※地下水位の測定値はGL表示値とT.P.表示値があります（表示単位：m）。

- GLとはGround Level（地盤面）の略です。GL-1.00mは、地盤面から1m下がった高さを表します。
- T.P.とはTokyo Peil（東京湾平均海水面）の略です。東京湾の平均海水面を0mとした時の高さを表し、測量法にて定めている高さの基準になります。

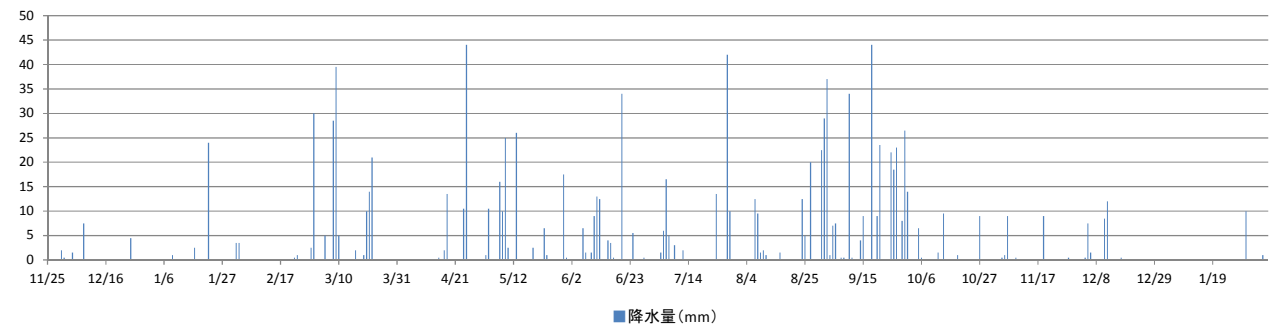
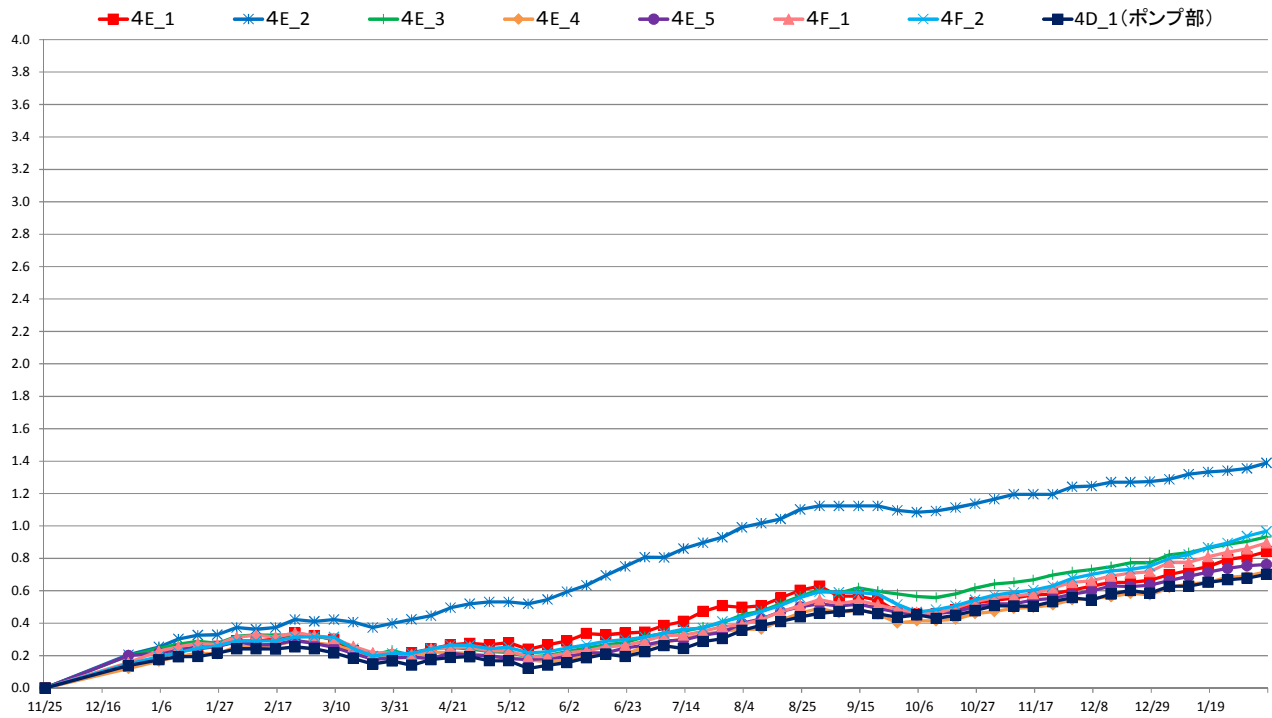
※降水量データは、気象庁（久喜）観測データを示す。



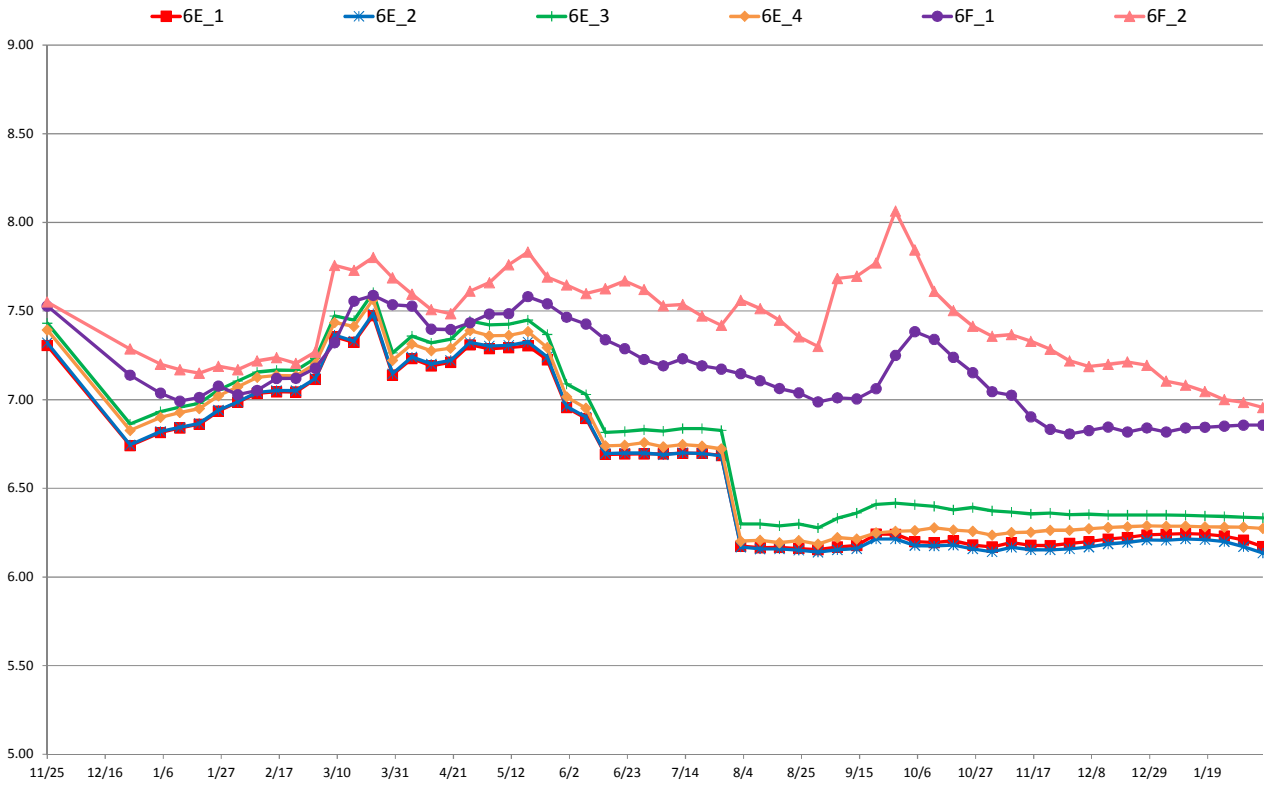
4丁目水位 (T.P+m)



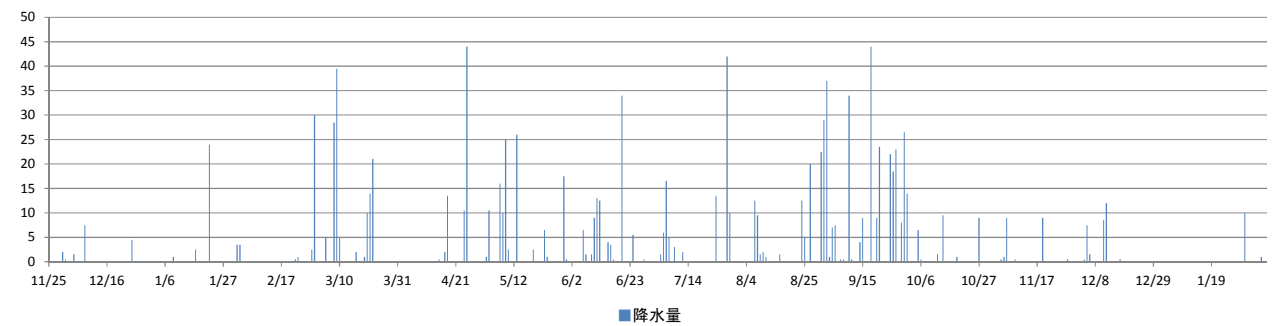
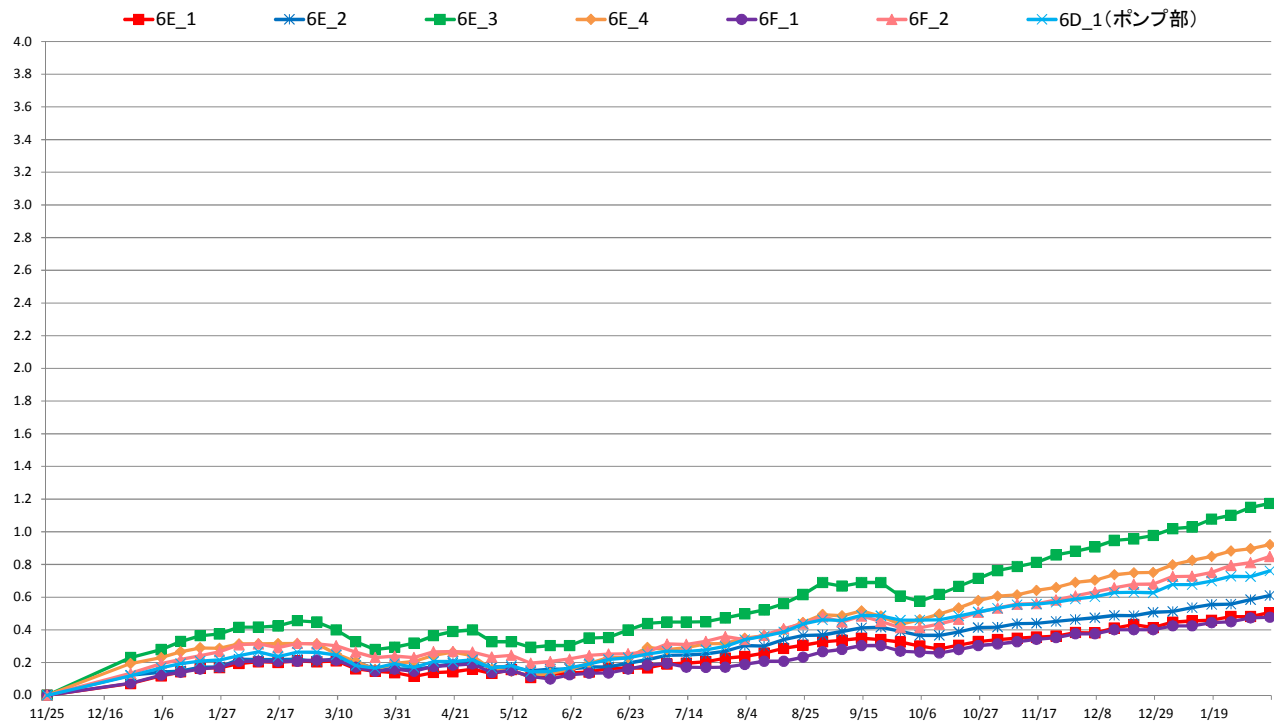
4丁目沈下 (G.L-cm)



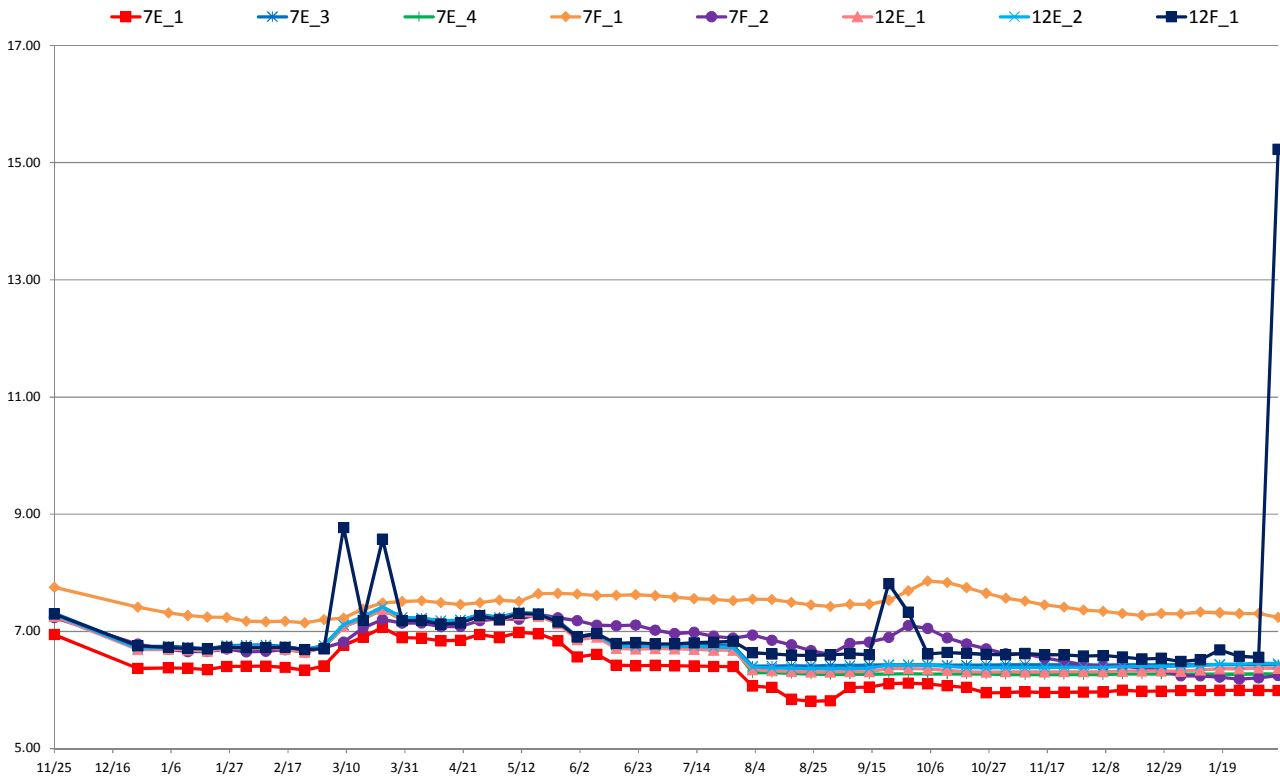
6丁目水位 (T.P+m)



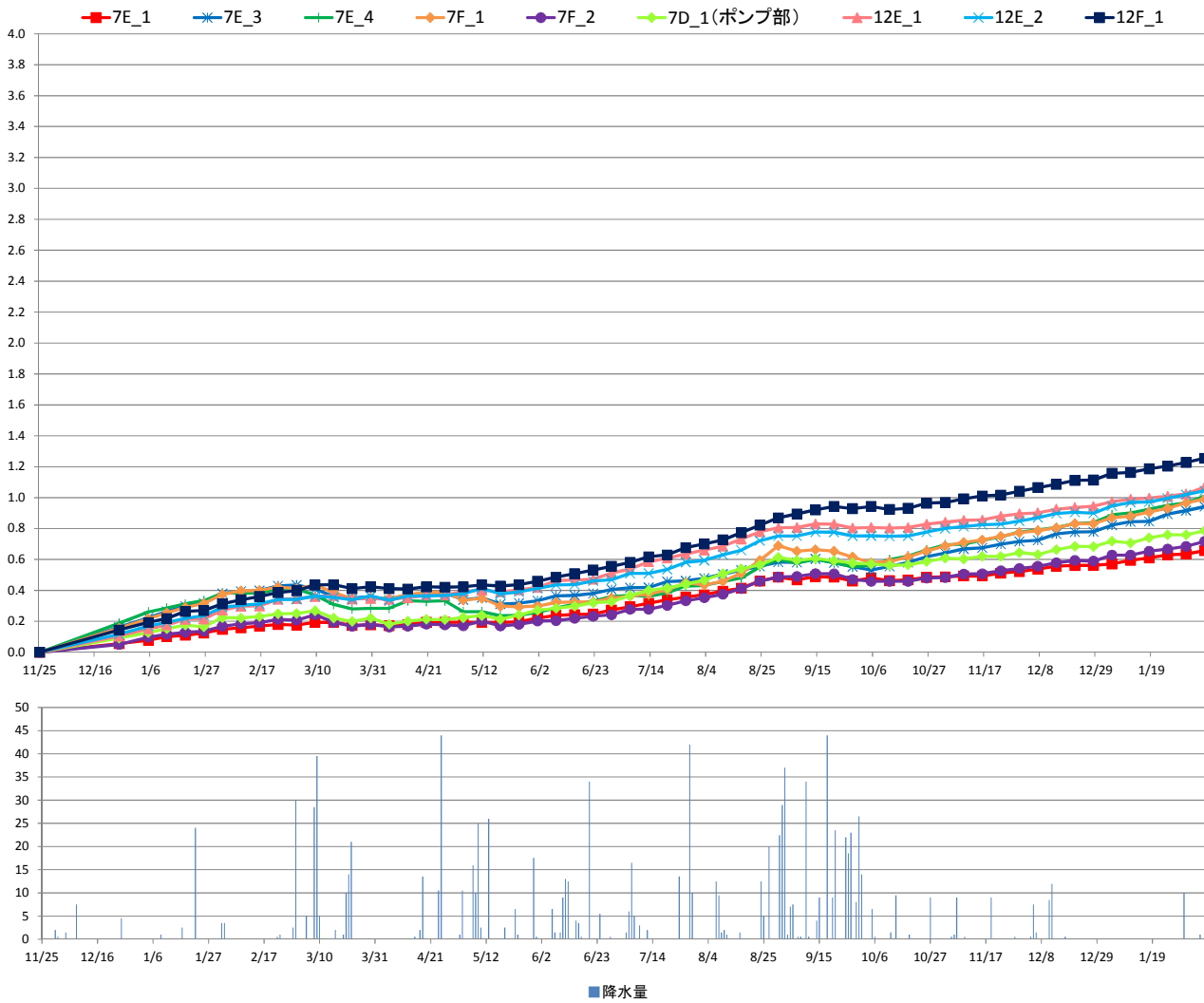
6丁目沈下 (G.L-cm)



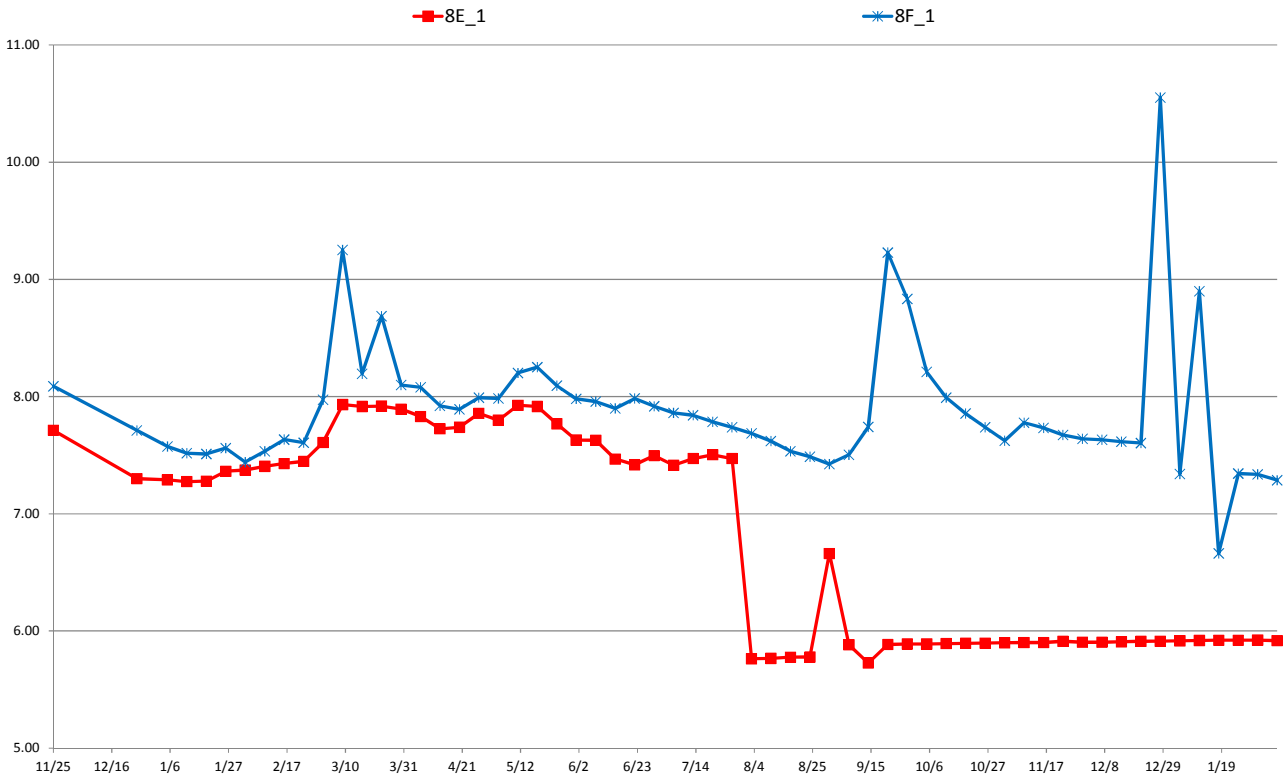
7・12丁目水位 (T.P+m)



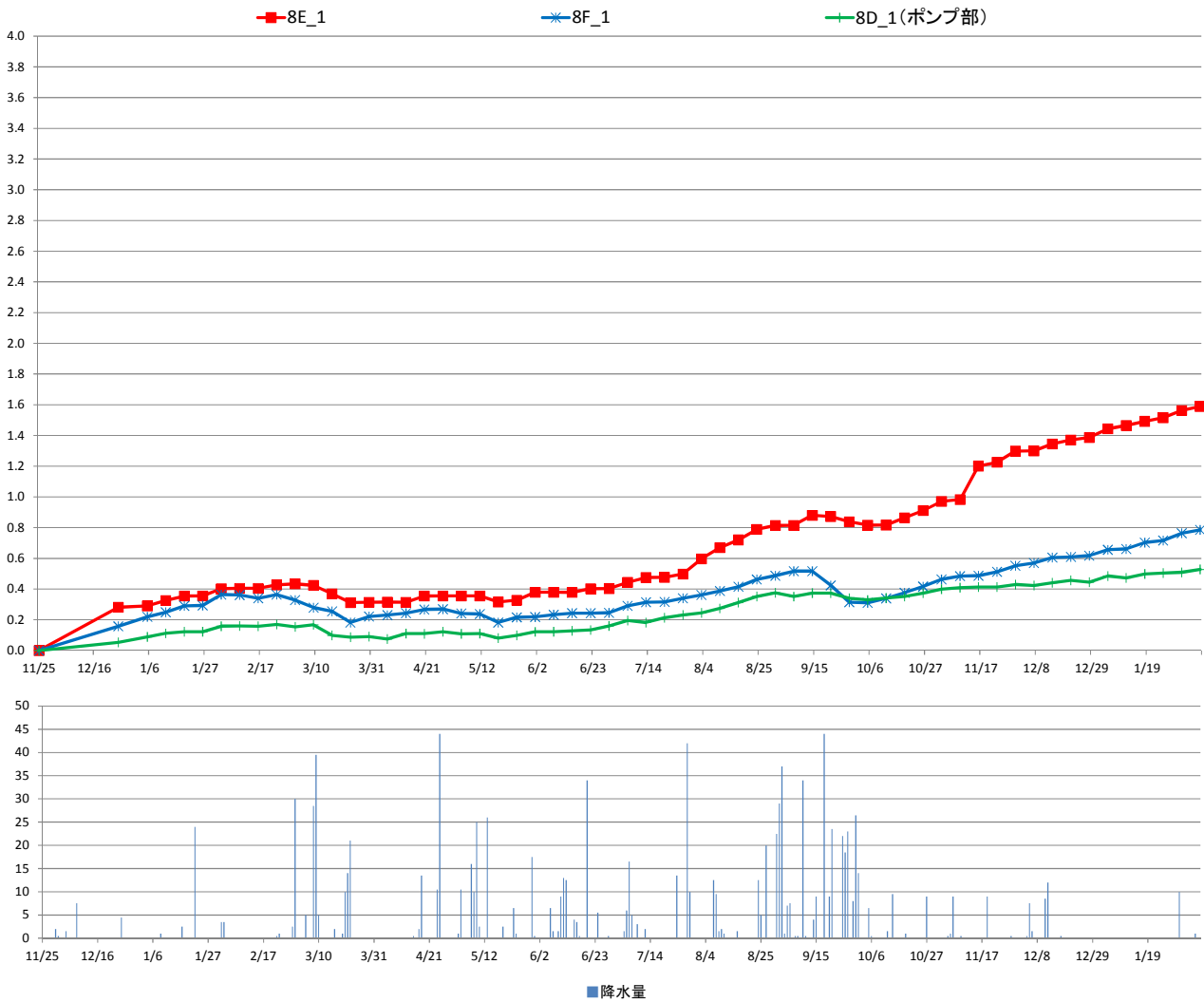
7・12丁目沈下 (G.L-cm)



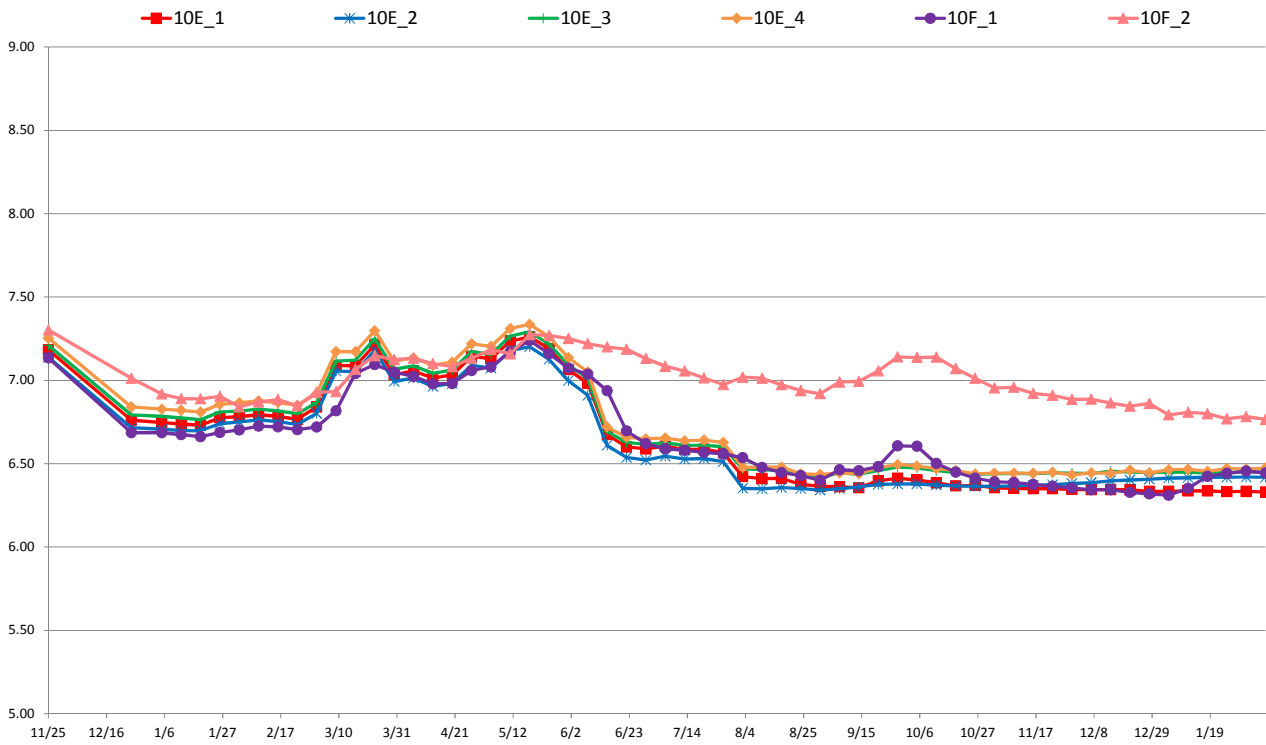
8丁目水位 (T.P+m)



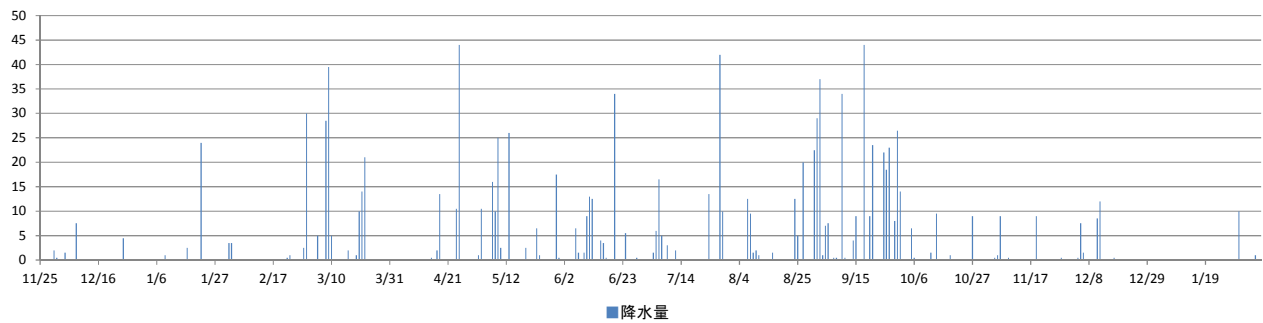
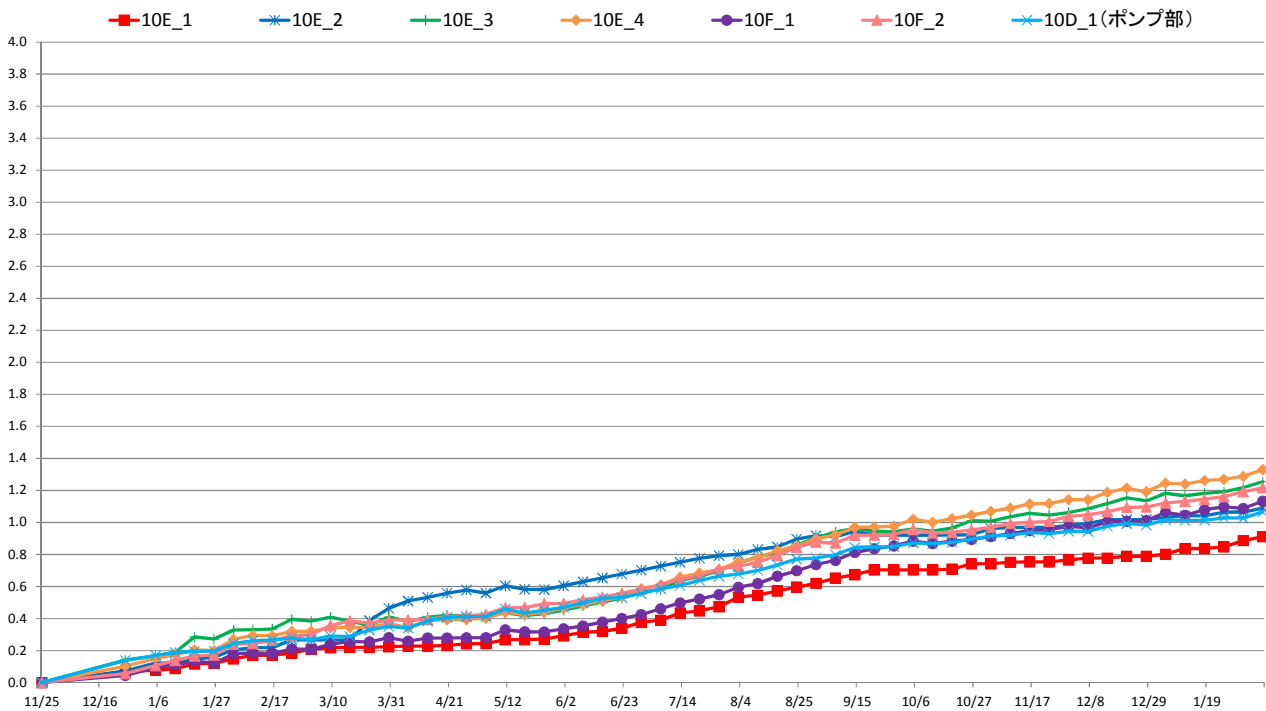
8丁目沈下 (G.L-cm)



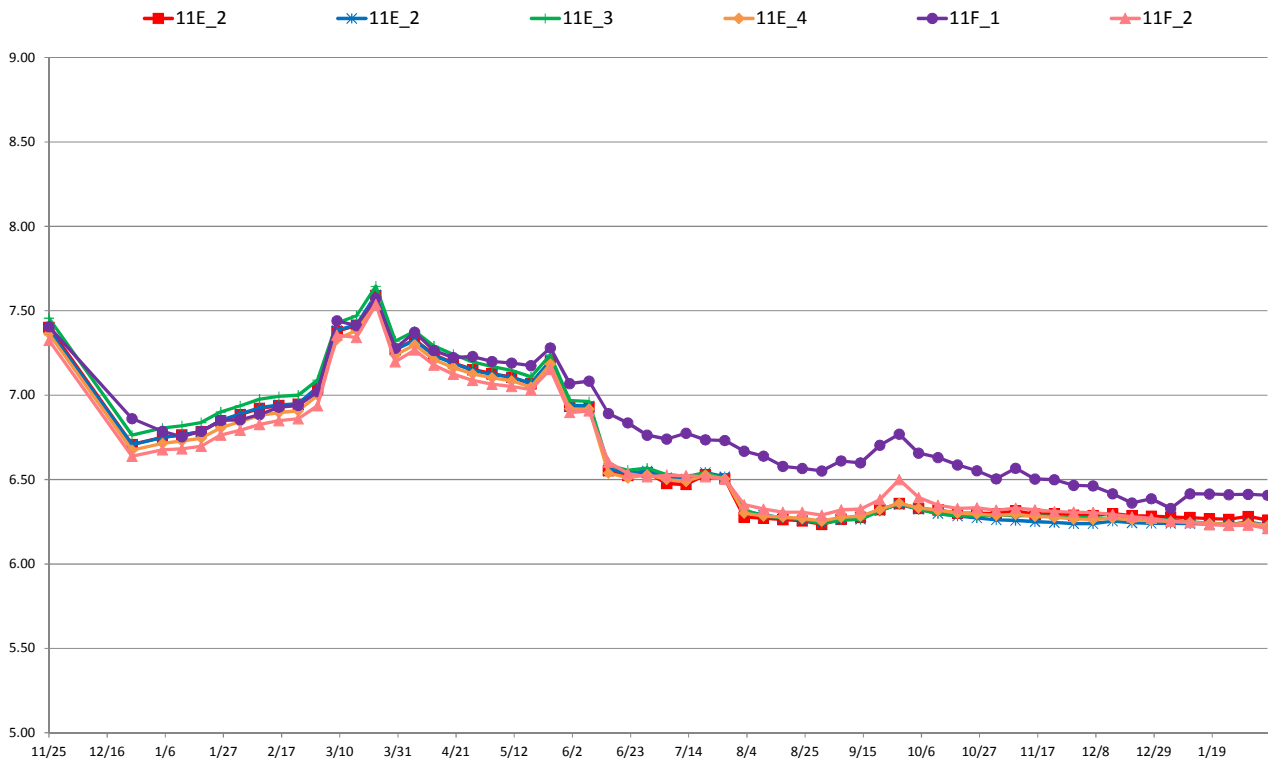
10丁目水位 (T.P+m)



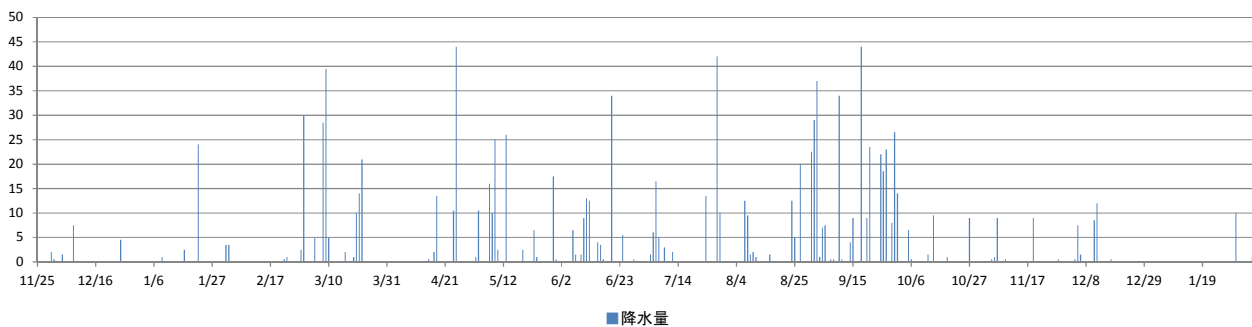
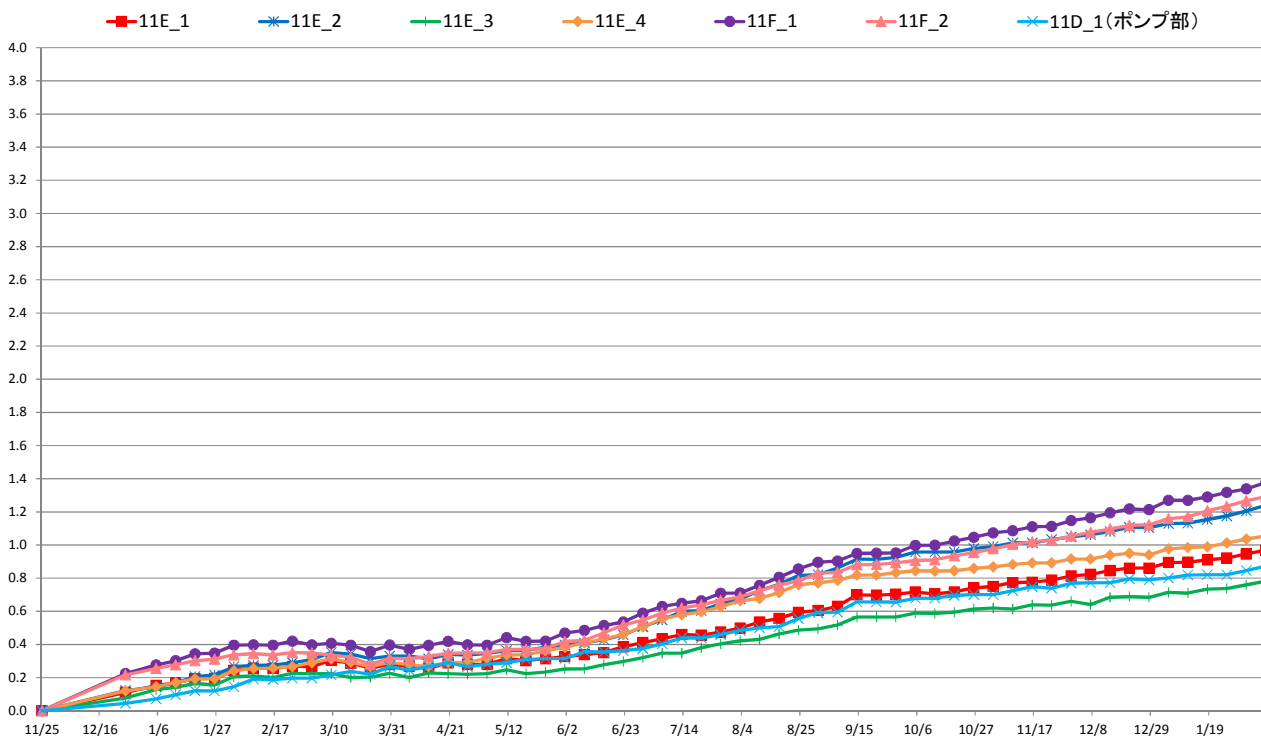
10丁目沈下 (G.L-cm)



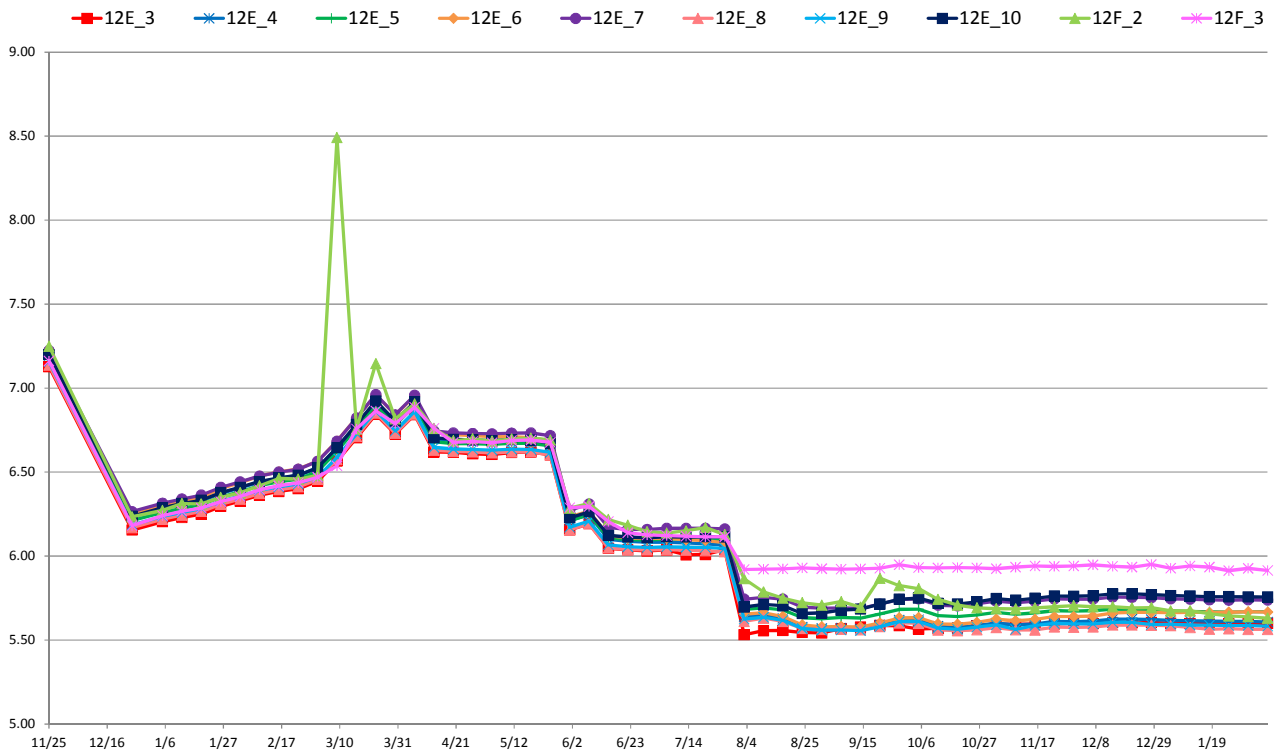
11丁目水位 (T.P+m)



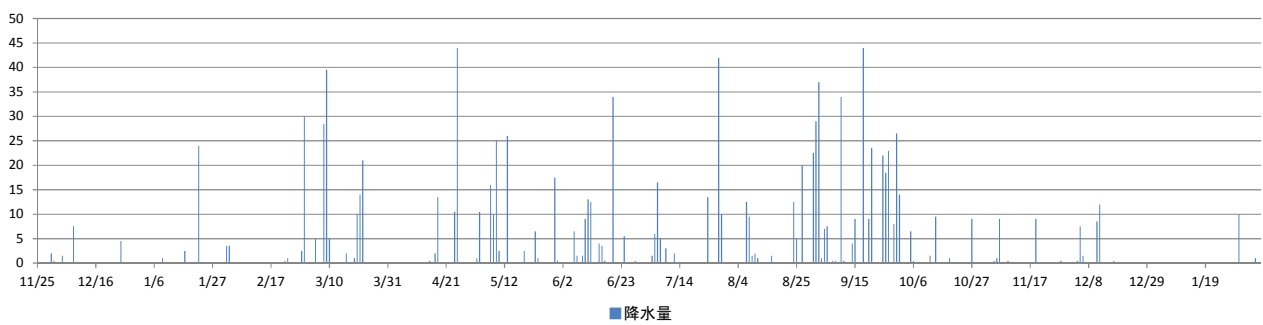
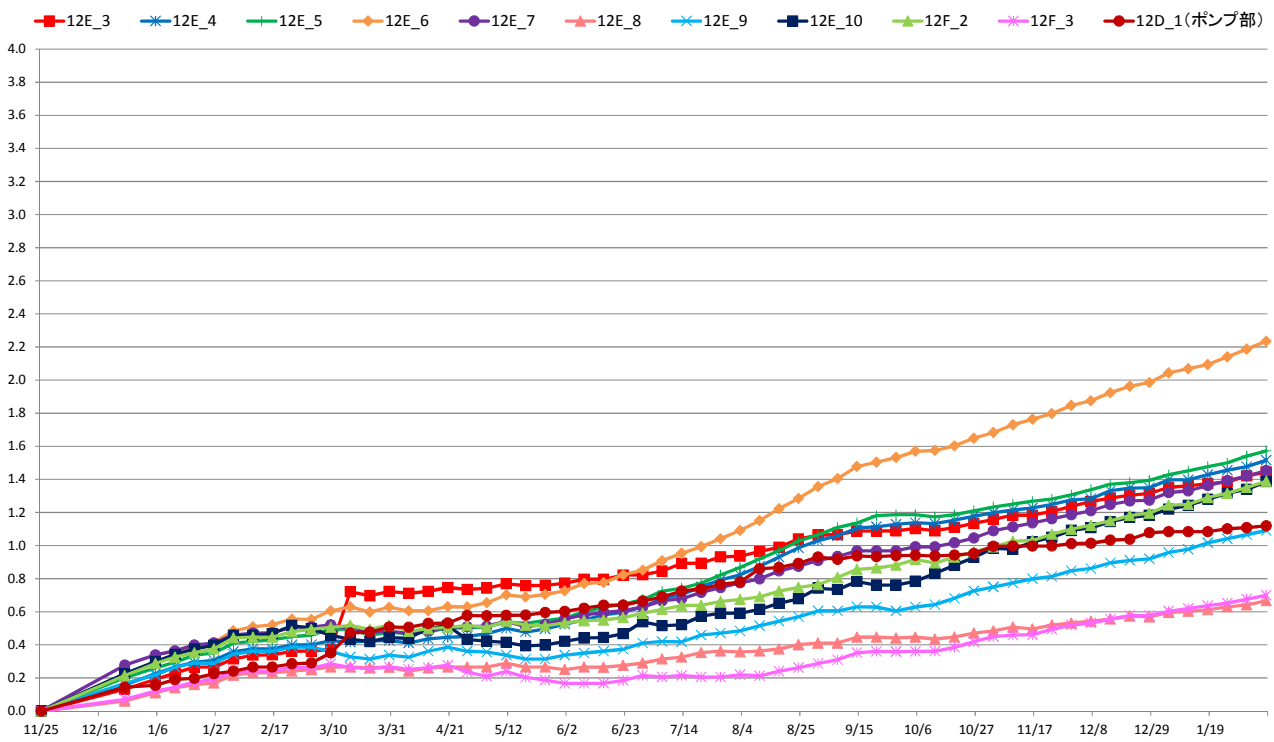
11丁目沈下 (G.L-cm)



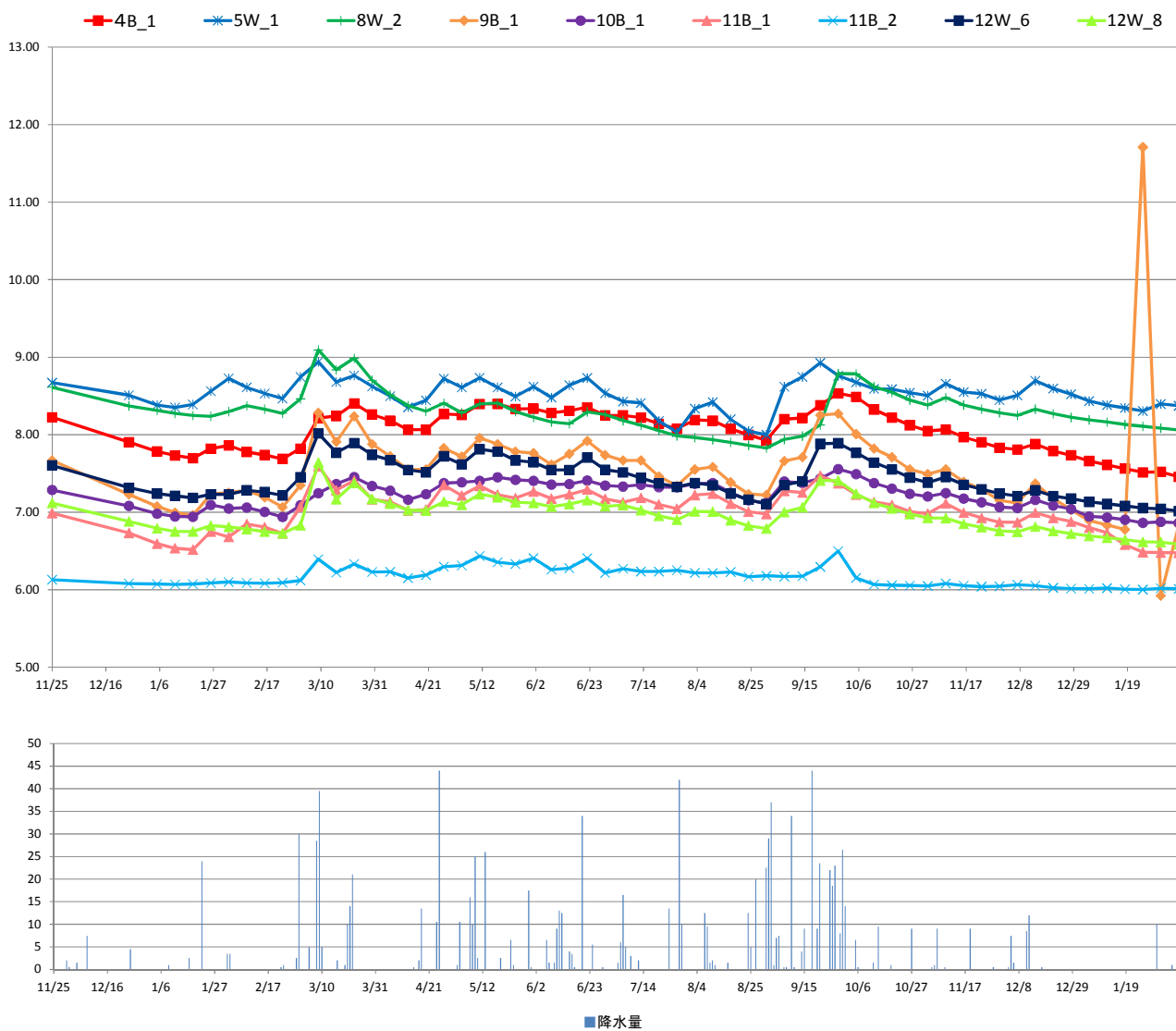
1 2丁目水位 (T.P+m)



1 2丁目沈下 (G.L-cm)



对策範囲外水位 (T,P+m)



[地下水位]

事業区域名	4丁目(民地部)			
計測地点名	4F_1		4F_2	
計測地点地盤高 (T.P.m)	9.14		9.26	
計測日	地下水位 (T.P.m)	地下水位 (GLm)	地下水位 (T.P.m)	地下水位 (GLm)
2017/11/25 12:00	8.40	-0.736	8.13	-1.127
2017/12/25 12:00	7.91	-1.231	7.90	-1.356
2018/1/5 12:00	7.78	-1.363	7.80	-1.457
2018/1/12 12:00	7.75	-1.391	7.76	-1.495
2018/1/19 12:00	7.76	-1.376	7.78	-1.484
2018/1/26 12:00	8.34	-0.797	7.84	-1.425
2018/2/2 12:00	8.45	-0.687	7.78	-1.480
2018/2/9 12:00	8.34	-0.803	7.81	-1.449
2018/2/16 12:00	8.34	-0.801	7.85	-1.407
2018/2/23 12:00	7.81	-1.329	7.83	-1.433
2018/3/2 12:00	8.42	-0.723	7.92	-1.339
2018/3/9 12:00	8.65	-0.495	8.05	-1.208
2018/3/16 12:00	8.50	-0.642	8.24	-1.016
2018/3/23 12:00	8.58	-0.562	8.30	-0.960
2018/3/30 12:00	8.48	-0.657	8.23	-1.034
2018/4/6 12:00	8.42	-0.716	8.22	-1.042
2018/4/13 12:00	8.40	-0.737	8.10	-1.158
2018/4/20 12:00	8.42	-0.723	8.09	-1.166
2018/4/27 12:00	8.47	-0.671	8.16	-1.100
2018/5/4 12:00	8.47	-0.673	8.20	-1.058
2018/5/11 12:00	8.52	-0.624	8.23	-1.029
2018/5/18 12:00	8.51	-0.627	8.33	-0.932
2018/5/25 12:00	8.49	-0.647	8.27	-0.993
2018/6/1 12:00	8.49	-0.654	8.22	-1.038
2018/6/8 12:00	8.45	-0.686	8.19	-1.073
2018/6/15 12:00	8.45	-0.689	8.12	-1.138
2018/6/22 12:00	8.45	-0.691	8.11	-1.155
2018/6/29 12:00	8.40	-0.744	8.05	-1.205
2018/7/6 12:00	8.53	-0.605	8.00	-1.263
2018/7/13 12:00	8.39	-0.752	8.00	-1.262
2018/7/20 12:00	8.03	-1.105	7.94	-1.318
2018/7/27 12:00	7.97	-1.174	7.91	-1.354
2018/8/3 12:00	8.05	-1.088	7.86	-1.396
2018/8/10 12:00	8.37	-0.773	7.80	-1.462
2018/8/17 12:00	7.87	-1.274	7.72	-1.537
2018/8/24 12:00	7.83	-1.307	7.67	-1.591
2018/8/31 12:00	7.80	-1.336	7.63	-1.631
2018/9/7 12:00	8.38	-0.756	7.77	-1.494
2018/9/14 12:00	8.42	-0.721	7.80	-1.462
2018/9/21 12:00	8.60	-0.543	7.89	-1.374
2018/9/28 12:00	8.55	-0.591	8.09	-1.175
2018/10/5 12:00	8.47	-0.669	8.10	-1.162
2018/10/12 12:00	8.42	-0.724	8.03	-1.232
2018/10/19 12:00	8.38	-0.761	7.92	-1.341
2018/10/26 12:00	8.37	-0.769	7.83	-1.432
2018/11/2 12:00	7.80	-1.336	7.75	-1.509
2018/11/9 12:00	8.37	-0.766	7.76	-1.495
2018/11/16 12:00	7.88	-1.264	7.71	-1.555
2018/11/23 12:00	7.83	-1.313	7.68	-1.578
2018/11/30 12:00	7.77	-1.368	7.63	-1.628
2018/12/7 12:00	7.80	-1.339	7.64	-1.622
2018/12/14 12:00	8.40	-0.741	7.61	-1.646
2018/12/21 12:00	7.67	-1.469	7.57	-1.694
2018/12/28 12:00	7.72	-1.424	7.58	-1.681
2019/1/4 12:00	7.63	-1.515	7.50	-1.761
2019/1/11 12:00	7.66	-1.485	7.51	-1.747
2019/1/18 12:00	7.64	-1.496	7.48	-1.782
2019/1/25 12:00	7.61	-1.532	7.44	-1.815
2019/2/1 12:00	8.45	-0.693	7.46	-1.797
2019/2/8 12:00	7.62	-1.522	7.43	-1.826
1段階目水位 2018/2/24まで	7.84	-1.30	7.84	-1.42
2段階目水位 2018/5/24まで	7.75	-1.39	7.75	-1.51
最終水位 2018/8/24まで	7.66	-1.48	7.66	-1.60

[地下水位]

事業区域名	4丁目(道路部)									
計測地点名	4E_1		4E_2		4E_3		4E_4		4E_5	
計測地点地盤高 (T.P.m)	9.18		9.30		9.08		8.85		9.23	
計測日	地下水位 (T.P.m)	地下水位 (GLm)	地下水位 (T.P.m)	地下水位 (GLm)	地下水位 (T.P.m)	地下水位 (GLm)	地下水位 (T.P.m)	地下水位 (GLm)	地下水位 (T.P.m)	地下水位 (GLm)
2017/11/25 12:00	7.92	-1.257	7.98	-1.316	7.98	-1.104	7.28	-1.571	8.00	-1.232
2017/12/25 12:00	7.58	-1.604	7.64	-1.660	7.63	-1.455	6.94	-1.909	7.65	-1.582
2018/1/5 12:00	7.64	-1.535	7.71	-1.591	7.69	-1.386	7.01	-1.839	7.72	-1.515
2018/1/12 12:00	7.67	-1.511	7.73	-1.571	7.71	-1.366	7.03	-1.816	7.74	-1.493
2018/1/19 12:00	7.71	-1.474	7.77	-1.532	7.75	-1.329	7.07	-1.779	7.77	-1.457
2018/1/26 12:00	7.79	-1.388	7.85	-1.449	7.83	-1.247	7.15	-1.695	7.86	-1.371
2018/2/2 12:00	7.82	-1.364	7.88	-1.424	7.86	-1.221	7.18	-1.670	7.88	-1.348
2018/2/9 12:00	7.82	-1.360	7.88	-1.421	7.86	-1.220	7.18	-1.667	7.88	-1.346
2018/2/16 12:00	7.82	-1.356	7.88	-1.417	7.86	-1.215	7.19	-1.664	7.89	-1.341
2018/2/23 12:00	7.81	-1.367	7.87	-1.428	7.85	-1.225	7.18	-1.674	7.88	-1.352
2018/3/2 12:00	7.88	-1.301	7.94	-1.359	7.92	-1.158	7.24	-1.606	7.95	-1.283
2018/3/9 12:00	8.11	-1.070	8.17	-1.125	8.15	-0.928	7.47	-1.378	8.18	-1.049
2018/4/20 12:00	7.98	-1.199	8.04	-1.258	8.03	-1.050	7.36	-1.489	8.06	-1.169
2018/4/27 12:00	8.08	-1.099	8.14	-1.158	8.13	-0.949	7.46	-1.387	8.16	-1.066
2018/5/4 12:00	8.06	-1.118	8.12	-1.179	8.11	-0.969	7.44	-1.406	8.14	-1.087
2018/5/11 12:00	8.16	-1.022	8.21	-1.085	8.21	-0.870	7.54	-1.305	8.24	-0.987
2018/5/18 12:00	8.16	-1.021	8.21	-1.085	8.21	-0.875	7.54	-1.306	8.24	-0.989
2018/5/25 12:00	8.09	-1.087	8.15	-1.152	8.14	-0.941	7.48	-1.372	8.18	-1.055
2018/6/1 12:00	7.96	-1.223	8.01	-1.290	8.00	-1.077	7.35	-1.504	8.04	-1.186
2018/6/8 12:00	7.88	-1.295	7.93	-1.366	7.93	-1.154	7.27	-1.576	7.97	-1.259
2018/6/15 12:00	7.59	-1.591	7.64	-1.657	7.63	-1.454	6.97	-1.880	7.67	-1.559
2018/6/22 12:00	7.60	-1.581	7.65	-1.654	7.64	-1.440	6.98	-1.868	7.69	-1.544
2018/6/29 12:00	7.59	-1.588	7.64	-1.657	7.62	-1.463	6.96	-1.887	7.67	-1.562
2018/7/6 12:00	7.60	-1.583	7.64	-1.656	7.63	-1.455	6.97	-1.880	7.67	-1.561
2018/7/13 12:00	7.60	-1.580	7.64	-1.657	7.63	-1.451	6.98	-1.869	7.69	-1.540
2018/7/20 12:00	7.59	-1.586	7.63	-1.665	7.62	-1.460	6.97	-1.877	7.69	-1.542
2018/7/27 12:00	7.59	-1.587	7.63	-1.667	7.62	-1.458	6.97	-1.877	7.69	-1.541
2018/8/3 12:00	6.82	-2.362	6.87	-2.426	6.76	-2.321	6.10	-2.745	6.83	-2.403
2018/8/10 12:00	6.82	-2.362	6.88	-2.423	6.75	-2.335	6.09	-2.764	6.82	-2.410
2018/8/17 12:00	6.83	-2.346	6.89	-2.407	6.75	-2.328	6.09	-2.763	6.82	-2.407
2018/8/24 12:00	6.83	-2.346	6.88	-2.419	6.75	-2.328	6.09	-2.760	6.83	-2.401
2018/8/31 12:00	6.82	-2.359	6.87	-2.434	6.75	-2.326	6.10	-2.753	6.84	-2.394
2018/9/7 12:00	6.80	-2.378	6.87	-2.426	6.76	-2.320	6.10	-2.754	6.84	-2.393
2018/9/14 12:00	6.79	-2.385	6.87	-2.428	6.76	-2.315	6.10	-2.754	6.82	-2.406
2018/9/21 12:00	6.81	-2.371	6.89	-2.411	6.79	-2.294	6.11	-2.737	6.84	-2.385
2018/9/28 12:00	6.83	-2.352	6.89	-2.410	6.79	-2.294	6.11	-2.736	6.85	-2.385
2018/10/5 12:00	6.82	-2.359	6.88	-2.417	6.79	-2.291	6.12	-2.734	6.85	-2.380
2018/10/12 12:00	6.81	-2.375	6.87	-2.431	6.78	-2.297	6.11	-2.740	6.84	-2.392
2018/10/19 12:00	6.80	-2.380	6.87	-2.433	6.78	-2.296	6.11	-2.735	6.83	-2.398
2018/10/26 12:00	6.80	-2.382	6.87	-2.431	6.78	-2.298	6.12	-2.732	6.86	-2.368
2018/11/2 12:00	6.80	-2.381	6.87	-2.427	6.78	-2.305	6.11	-2.737	6.85	-2.376
2018/11/9 12:00	6.80	-2.381	6.88	-2.424	6.79	-2.287	6.13	-2.720	6.87	-2.361
2018/11/16 12:00	6.80	-2.380	6.88	-2.422	6.79	-2.288	6.13	-2.722	6.86	-2.374
2018/11/23 12:00	6.80	-2.382	6.88	-2.419	6.78	-2.303	6.12	-2.733	6.86	-2.371
2018/11/30 12:00	6.80	-2.383	6.88	-2.416	6.78	-2.295	6.13	-2.724	6.87	-2.362
2018/12/7 12:00	6.77	-2.410	6.89	-2.413	6.79	-2.292	6.13	-2.722	6.87	-2.360
2018/12/14 12:00	6.81	-2.374	6.90	-2.400	6.80	-2.279	6.14	-2.707	6.88	-2.346
2018/12/21 12:00	6.79	-2.390	6.90	-2.396	6.80	-2.278	6.15	-2.703	6.89	-2.343
2018/12/28 12:00	6.79	-2.385	6.91	-2.393	6.79	-2.286	6.14	-2.711	6.88	-2.352
2019/1/4 12:00	6.82	-2.359	6.91	-2.387	6.80	-2.284	6.14	-2.707	6.88	-2.349
2019/1/11 12:00	6.83	-2.346	6.92	-2.382	6.80	-2.280	6.15	-2.701	6.89	-2.343
2019/1/18 12:00	6.84	-2.337	6.92	-2.380	6.79	-2.287	6.14	-2.708	6.88	-2.353
2019/1/25 12:00	6.85	-2.328	6.93	-2.373	6.79	-2.293	6.14	-2.712	6.87	-2.358
2019/2/1 12:00	6.85	-2.331	6.93	-2.374	6.80	-2.278	6.16	-2.695	6.89	-2.338
2019/2/8 12:00	6.84	-2.338	6.92	-2.378	6.81	-2.275	6.16	-2.693	6.89	-2.337

[沈下量]

事業区域名 計測地点名	4丁目(民地部)	
	4F_1 沈下量 (cm)	4F_2 沈下量 (cm)
2017/11/25 12:00	0.0	0.0
2017/12/25 12:00	0.2	0.1
2018/1/5 12:00	0.2	0.2
2018/1/12 12:00	0.3	0.2
2018/1/19 12:00	0.3	0.2
2018/1/26 12:00	0.3	0.3
2018/2/2 12:00	0.3	0.3
2018/2/9 12:00	0.3	0.3
2018/2/16 12:00	0.3	0.3
2018/2/23 12:00	0.3	0.3
2018/3/2 12:00	0.3	0.3
2018/3/9 12:00	0.3	0.3
2018/3/16 12:00	0.3	0.2
2018/3/23 12:00	0.2	0.2
2018/3/30 12:00	0.2	0.2
2018/4/6 12:00	0.2	0.2
2018/4/13 12:00	0.2	0.2
2018/4/20 12:00	0.3	0.3
2018/4/27 12:00	0.3	0.3
2018/5/4 12:00	0.2	0.2
2018/5/11 12:00	0.2	0.3
2018/5/18 12:00	0.2	0.2
2018/5/25 12:00	0.2	0.2
2018/6/1 12:00	0.2	0.2
2018/6/8 12:00	0.2	0.3
2018/6/15 12:00	0.3	0.3
2018/6/22 12:00	0.3	0.3
2018/6/29 12:00	0.3	0.3
2018/7/6 12:00	0.3	0.3
2018/7/13 12:00	0.3	0.4
2018/7/20 12:00	0.4	0.4
2018/7/27 12:00	0.4	0.4
2018/8/3 12:00	0.4	0.4
2018/8/10 12:00	0.4	0.5
2018/8/17 12:00	0.5	0.5
2018/8/24 12:00	0.5	0.6
2018/8/31 12:00	0.5	0.6
2018/9/7 12:00	0.5	0.6
2018/9/14 12:00	0.5	0.6
2018/9/21 12:00	0.5	0.6
2018/9/28 12:00	0.5	0.5
2018/10/5 12:00	0.5	0.5
2018/10/12 12:00	0.5	0.5
2018/10/19 12:00	0.5	0.5
2018/10/26 12:00	0.5	0.5
2018/11/2 12:00	0.6	0.6
2018/11/9 12:00	0.6	0.6
2018/11/16 12:00	0.6	0.6
2018/11/23 12:00	0.6	0.6
2018/11/30 12:00	0.7	0.7
2018/12/7 12:00	0.7	0.7
2018/12/14 12:00	0.7	0.7
2018/12/21 12:00	0.7	0.7
2018/12/28 12:00	0.7	0.8
2019/1/4 12:00	0.8	0.8
2019/1/11 12:00	0.8	0.8
2019/1/18 12:00	0.8	0.9
2019/1/25 12:00	0.8	0.9
2019/2/1 12:00	0.9	0.9
2019/2/8 12:00	0.9	1.0

[沈下量]

事業区域名 計測地点名	4丁目(道路部)					
	4E_1 沈下量 (cm)	4E_2 沈下量 (cm)	4E_3 沈下量 (cm)	4E_4 沈下量 (cm)	4E_5 沈下量 (cm)	4D_1(ポンプ部) 沈下量 (cm)
2017/11/25 12:00	0.0	0.0	0.0	0.0	0.0	0.0
2017/12/25 12:00	0.1	0.2	0.2	0.1	0.2	0.1
2018/1/5 12:00	0.2	0.3	0.2	0.2	0.2	0.2
2018/1/12 12:00	0.2	0.3	0.3	0.2	0.2	0.2
2018/1/19 12:00	0.2	0.3	0.3	0.2	0.3	0.2
2018/1/26 12:00	0.3	0.3	0.3	0.2	0.3	0.2
2018/2/2 12:00	0.3	0.4	0.3	0.3	0.3	0.2
2018/2/9 12:00	0.3	0.4	0.3	0.3	0.3	0.2
2018/2/16 12:00	0.3	0.4	0.3	0.3	0.3	0.2
2018/2/23 12:00	0.3	0.4	0.3	0.3	0.3	0.3
2018/3/2 12:00	0.3	0.4	0.3	0.3	0.3	0.2
2018/3/9 12:00	0.3	0.4	0.3	0.3	0.3	0.2
2018/3/16 12:00	0.2	0.4	0.3	0.2	0.2	0.2
2018/3/23 12:00	0.2	0.4	0.2	0.2	0.2	0.1
2018/3/30 12:00	0.2	0.4	0.2	0.2	0.2	0.2
2018/4/6 12:00	0.2	0.4	0.2	0.2	0.2	0.1
2018/4/13 12:00	0.2	0.4	0.2	0.2	0.2	0.2
2018/4/20 12:00	0.3	0.5	0.3	0.2	0.2	0.2
2018/4/27 12:00	0.3	0.5	0.2	0.2	0.2	0.2
2018/5/4 12:00	0.3	0.5	0.2	0.2	0.2	0.2
2018/5/11 12:00	0.3	0.5	0.2	0.2	0.2	0.2
2018/5/18 12:00	0.2	0.5	0.2	0.2	0.2	0.1
2018/5/25 12:00	0.3	0.5	0.2	0.2	0.2	0.1
2018/6/1 12:00	0.3	0.6	0.2	0.2	0.2	0.2
2018/6/8 12:00	0.3	0.6	0.2	0.2	0.2	0.2
2018/6/15 12:00	0.3	0.7	0.3	0.2	0.2	0.2
2018/6/22 12:00	0.3	0.7	0.3	0.2	0.2	0.2
2018/6/29 12:00	0.3	0.8	0.3	0.3	0.3	0.2
2018/7/6 12:00	0.4	0.8	0.3	0.3	0.3	0.3
2018/7/13 12:00	0.4	0.9	0.3	0.3	0.3	0.2
2018/7/20 12:00	0.5	0.9	0.4	0.3	0.3	0.3
2018/7/27 12:00	0.5	0.9	0.4	0.4	0.3	0.3
2018/8/3 12:00	0.5	1.0	0.5	0.4	0.4	0.4
2018/8/10 12:00	0.5	1.0	0.5	0.4	0.4	0.4
2018/8/17 12:00	0.6	1.0	0.5	0.4	0.5	0.4
2018/8/24 12:00	0.6	1.1	0.6	0.5	0.5	0.4
2018/8/31 12:00	0.6	1.1	0.6	0.5	0.5	0.5
2018/9/7 12:00	0.6	1.1	0.6	0.5	0.5	0.5
2018/9/14 12:00	0.6	1.1	0.6	0.5	0.5	0.5
2018/9/21 12:00	0.5	1.1	0.6	0.5	0.5	0.5
2018/9/28 12:00	0.5	1.1	0.6	0.4	0.5	0.4
2018/10/5 12:00	0.5	1.1	0.6	0.4	0.5	0.5
2018/10/12 12:00	0.5	1.1	0.6	0.4	0.5	0.4
2018/10/19 12:00	0.5	1.1	0.6	0.4	0.5	0.4
2018/10/26 12:00	0.5	1.1	0.6	0.5	0.5	0.5
2018/11/2 12:00	0.5	1.2	0.6	0.5	0.5	0.5
2018/11/9 12:00	0.6	1.2	0.7	0.5	0.5	0.5
2018/11/16 12:00	0.6	1.2	0.7	0.5	0.5	0.5
2018/11/23 12:00	0.6	1.2	0.7	0.5	0.6	0.5
2018/11/30 12:00	0.6	1.2	0.7	0.5	0.6	0.6
2018/12/7 12:00	0.6	1.2	0.7	0.6	0.6	0.5
2018/12/14 12:00	0.7	1.3	0.7	0.6	0.6	0.6
2018/12/21 12:00	0.7	1.3	0.8	0.6	0.6	0.6
2018/12/28 12:00	0.7	1.3	0.8	0.6	0.6	0.6
2019/1/4 12:00	0.7	1.3	0.8	0.6	0.7	0.6
2019/1/11 12:00	0.7	1.3	0.8	0.6	0.7	0.6
2019/1/18 12:00	0.7	1.3	0.9	0.7	0.7	0.7
2019/1/25 12:00	0.8	1.3	0.9	0.7	0.7	0.7
2019/2/1 12:00	0.8	1.4	0.9	0.7	0.8	0.7
2019/2/8 12:00	0.8	1.4	0.9	0.7	0.8	0.7

[地下水位]

事業区域名	6丁目(民地部)			
計測地点名	6F_1		6F_2	
計測地点地盤高 (T.P.m)	9.36		9.37	
計測日	地下水位 (T.P.m)	地下水位 (GLm)	地下水位 (T.P.m)	地下水位 (GLm)
2017/11/25 12:00	7.53	-1.832	7.55	-1.818
2017/12/25 12:00	7.14	-2.221	7.29	-2.083
2018/1/5 12:00	7.04	-2.322	7.20	-2.170
2018/1/12 12:00	6.99	-2.368	7.17	-2.201
2018/1/19 12:00	7.01	-2.347	7.15	-2.220
2018/1/26 12:00	7.08	-2.283	7.19	-2.182
2018/2/2 12:00	7.03	-2.332	7.17	-2.201
2018/2/9 12:00	7.05	-2.308	7.22	-2.151
2018/2/16 12:00	7.12	-2.240	7.24	-2.133
2018/2/23 12:00	7.12	-2.239	7.20	-2.165
2018/3/2 12:00	7.18	-2.183	7.27	-2.101
2018/3/9 12:00	7.32	-2.038	7.76	-1.612
2018/3/16 12:00	7.56	-1.804	7.73	-1.640
2018/3/23 12:00	7.59	-1.771	7.80	-1.568
2018/3/30 12:00	7.54	-1.824	7.69	-1.682
2018/4/6 12:00	7.53	-1.832	7.60	-1.775
2018/4/13 12:00	7.40	-1.963	7.51	-1.862
2018/4/20 12:00	7.40	-1.964	7.49	-1.885
2018/4/27 12:00	7.43	-1.926	7.61	-1.758
2018/5/4 12:00	7.48	-1.877	7.66	-1.710
2018/5/11 12:00	7.48	-1.875	7.76	-1.608
2018/5/18 12:00	7.58	-1.778	7.83	-1.537
2018/5/25 12:00	7.54	-1.819	7.69	-1.678
2018/6/1 12:00	7.47	-1.894	7.65	-1.723
2018/6/8 12:00	7.43	-1.934	7.60	-1.772
2018/6/15 12:00	7.34	-2.022	7.63	-1.744
2018/6/22 12:00	7.29	-2.072	7.67	-1.700
2018/6/29 12:00	7.23	-2.133	7.62	-1.749
2018/7/6 12:00	7.19	-2.168	7.53	-1.840
2018/7/13 12:00	7.23	-2.129	7.54	-1.833
2018/7/20 12:00	7.19	-2.168	7.47	-1.898
2018/7/27 12:00	7.17	-2.188	7.42	-1.951
2018/8/3 12:00	7.15	-2.213	7.56	-1.809
2018/8/10 12:00	7.11	-2.253	7.51	-1.856
2018/8/17 12:00	7.06	-2.297	7.45	-1.922
2018/8/24 12:00	7.04	-2.321	7.36	-2.014
2018/8/31 12:00	6.99	-2.372	7.30	-2.069
2018/9/7 12:00	7.01	-2.349	7.68	-1.686
2018/9/14 12:00	7.00	-2.356	7.70	-1.673
2018/9/21 12:00	7.06	-2.298	7.77	-1.598
2018/9/28 12:00	7.25	-2.110	8.06	-1.306
2018/10/5 12:00	7.38	-1.976	7.84	-1.525
2018/10/12 12:00	7.34	-2.020	7.61	-1.759
2018/10/19 12:00	7.24	-2.121	7.50	-1.867
2018/10/26 12:00	7.15	-2.208	7.41	-1.956
2018/11/2 12:00	7.05	-2.314	7.36	-2.011
2018/11/9 12:00	7.03	-2.335	7.37	-2.002
2018/11/16 12:00	6.90	-2.457	7.33	-2.040
2018/11/23 12:00	6.83	-2.527	7.28	-2.085
2018/11/30 12:00	6.81	-2.553	7.22	-2.151
2018/12/7 12:00	6.83	-2.534	7.19	-2.183
2018/12/14 12:00	6.85	-2.514	7.20	-2.171
2018/12/21 12:00	6.82	-2.542	7.21	-2.157
2018/12/28 12:00	6.84	-2.519	7.19	-2.176
2019/1/4 12:00	6.82	-2.542	7.11	-2.265
2019/1/11 12:00	6.84	-2.519	7.08	-2.288
2019/1/18 12:00	6.84	-2.515	7.05	-2.324
2019/1/25 12:00	6.85	-2.510	7.00	-2.370
2019/2/1 12:00	6.86	-2.503	6.98	-2.386
2019/2/8 12:00	6.86	-2.504	6.96	-2.415
1段階目水位 2018/2/24まで	7.10	-2.26	7.10	-2.27
2段階目水位 2018/5/24まで	6.90	-2.46	6.90	-2.47
最終水位 2018/8/24まで	6.70	-2.66	6.70	-2.67

[地下水位]

事業区域名	6丁目(道路部)							
計測地点名	6E_1		6E_2		6E_3		6E_4	
計測地点地盤高 (T.P.m)	8.82		8.84		8.79		8.66	
計測日	地下水位 (T.P.m)	地下水位 (GLm)	地下水位 (T.P.m)	地下水位 (GLm)	地下水位 (T.P.m)	地下水位 (GLm)	地下水位 (T.P.m)	地下水位 (GLm)
2017/11/25 12:00	7.31	-1.514	7.32	-1.518	7.43	-1.358	7.39	-1.266
2017/12/25 12:00	6.74	-2.078	6.75	-2.094	6.86	-1.926	6.83	-1.833
2018/1/5 12:00	6.82	-2.005	6.82	-2.020	6.93	-1.857	6.90	-1.760
2018/1/12 12:00	6.84	-1.980	6.84	-1.995	6.96	-1.832	6.93	-1.732
2018/1/19 12:00	6.86	-1.959	6.87	-1.973	6.98	-1.810	6.95	-1.710
2018/1/26 12:00	6.94	-1.885	6.94	-1.899	7.05	-1.736	7.02	-1.637
2018/2/2 12:00	6.99	-1.833	6.99	-1.852	7.10	-1.685	7.07	-1.587
2018/2/9 12:00	7.04	-1.784	7.04	-1.798	7.16	-1.635	7.13	-1.534
2018/2/16 12:00	7.04	-1.776	7.05	-1.788	7.17	-1.624	7.14	-1.524
2018/2/23 12:00	7.04	-1.777	7.05	-1.789	7.17	-1.625	7.13	-1.525
2018/3/2 12:00	7.12	-1.705	7.12	-1.720	7.23	-1.557	7.20	-1.457
2018/3/9 12:00	7.36	-1.465	7.37	-1.475	7.47	-1.318	7.44	-1.225
2018/3/16 12:00	7.32	-1.496	7.33	-1.510	7.45	-1.341	7.41	-1.248
2018/3/23 12:00	7.47	-1.346	7.49	-1.354	7.60	-1.185	7.56	-1.095
2018/3/30 12:00	7.14	-1.680	7.15	-1.694	7.26	-1.526	7.22	-1.438
2018/4/6 12:00	7.23	-1.588	7.24	-1.599	7.36	-1.431	7.31	-1.346
2018/4/13 12:00	7.19	-1.628	7.20	-1.638	7.32	-1.469	7.28	-1.385
2018/4/20 12:00	7.21	-1.609	7.22	-1.618	7.34	-1.449	7.29	-1.369
2018/4/27 12:00	7.31	-1.511	7.32	-1.516	7.44	-1.347	7.39	-1.270
2018/5/4 12:00	7.29	-1.533	7.30	-1.537	7.42	-1.367	7.36	-1.299
2018/5/11 12:00	7.29	-1.527	7.31	-1.534	7.43	-1.364	7.36	-1.297
2018/5/18 12:00	7.30	-1.516	7.33	-1.514	7.45	-1.340	7.38	-1.275
2018/5/25 12:00	7.23	-1.595	7.24	-1.599	7.37	-1.422	7.29	-1.365
2018/6/1 12:00	6.96	-1.864	6.96	-1.877	7.09	-1.700	7.02	-1.644
2018/6/8 12:00	6.89	-1.926	6.90	-1.939	7.03	-1.761	6.95	-1.708
2018/6/15 12:00	6.69	-2.128	6.70	-2.145	6.82	-1.974	6.74	-1.921
2018/6/22 12:00	6.69	-2.126	6.70	-2.142	6.82	-1.969	6.74	-1.916
2018/6/29 12:00	6.69	-2.125	6.70	-2.141	6.83	-1.960	6.76	-1.903
2018/7/6 12:00	6.69	-2.125	6.69	-2.150	6.82	-1.967	6.73	-1.927
2018/7/13 12:00	6.70	-2.122	6.70	-2.140	6.84	-1.953	6.75	-1.912
2018/7/20 12:00	6.70	-2.122	6.70	-2.144	6.84	-1.953	6.74	-1.922
2018/7/27 12:00	6.69	-2.135	6.68	-2.156	6.83	-1.963	6.72	-1.937
2018/8/3 12:00	6.17	-2.647	6.17	-2.671	6.30	-2.491	6.20	-2.457
2018/8/10 12:00	6.16	-2.656	6.16	-2.683	6.30	-2.490	6.21	-2.453
2018/8/17 12:00	6.17	-2.654	6.16	-2.682	6.29	-2.502	6.19	-2.467
2018/8/24 12:00	6.16	-2.660	6.15	-2.690	6.30	-2.490	6.21	-2.455
2018/8/31 12:00	6.15	-2.665	6.14	-2.700	6.28	-2.513	6.19	-2.475
2018/9/7 12:00	6.17	-2.651	6.15	-2.687	6.33	-2.459	6.22	-2.438
2018/9/14 12:00	6.18	-2.642	6.16	-2.681	6.36	-2.429	6.21	-2.446
2018/9/21 12:00	6.24	-2.578	6.21	-2.626	6.41	-2.380	6.25	-2.411
2018/9/28 12:00	6.24	-2.579	6.21	-2.626	6.42	-2.374	6.26	-2.402
2018/10/5 12:00	6.20	-2.620	6.18	-2.662	6.41	-2.382	6.26	-2.399
2018/10/12 12:00	6.19	-2.626	6.18	-2.664	6.40	-2.391	6.28	-2.383
2018/10/19 12:00	6.20	-2.616	6.18	-2.661	6.38	-2.412	6.26	-2.395
2018/10/26 12:00	6.18	-2.639	6.16	-2.682	6.39	-2.398	6.26	-2.402
2018/11/2 12:00	6.17	-2.651	6.14	-2.698	6.37	-2.417	6.24	-2.424
2018/11/9 12:00	6.19	-2.626	6.17	-2.672	6.37	-2.424	6.25	-2.409
2018/11/16 12:00	6.18	-2.641	6.15	-2.687	6.36	-2.434	6.25	-2.408
2018/11/23 12:00	6.18	-2.642	6.15	-2.688	6.36	-2.430	6.26	-2.396
2018/11/30 12:00	6.19	-2.631	6.16	-2.682	6.35	-2.439	6.26	-2.396
2018/12/7 12:00	6.20	-2.621	6.17	-2.671	6.35	-2.436	6.27	-2.388
2018/12/14 12:00	6.21	-2.606	6.19	-2.654	6.35	-2.439	6.28	-2.382
2018/12/21 12:00	6.22	-2.597	6.19	-2.645	6.35	-2.439	6.28	-2.376
2018/12/28 12:00	6.24	-2.583	6.21	-2.631	6.35	-2.439	6.29	-2.371
2019/1/4 12:00	6.24	-2.579	6.21	-2.632	6.35	-2.440	6.29	-2.373
2019/1/11 12:00	6.24	-2.575	6.21	-2.626	6.35	-2.441	6.29	-2.373
2019/1/18 12:00	6.24	-2.579	6.21	-2.630	6.34	-2.446	6.28	-2.377
2019/1/25 12:00	6.23	-2.589	6.20	-2.641	6.34	-2.449	6.28	-2.379
2019/2/1 12:00	6.21	-2.612	6.17	-2.669	6.34	-2.453	6.28	-2.380
2019/2/8 12:00	6.17	-2.649	6.13	-2.705	6.33	-2.457	6.27	-2.386

[沈下量]

事業区域名 計測地点名	6丁目(民地部)	
	6F_1	6F_2
計測日	沈下量 (cm)	沈下量 (cm)
2017/11/25 12:00	0.0	0.0
2017/12/25 12:00	0.1	0.1
2018/1/5 12:00	0.1	0.2
2018/1/12 12:00	0.1	0.2
2018/1/19 12:00	0.2	0.2
2018/1/26 12:00	0.2	0.3
2018/2/2 12:00	0.2	0.3
2018/2/9 12:00	0.2	0.3
2018/2/16 12:00	0.2	0.3
2018/2/23 12:00	0.2	0.3
2018/3/2 12:00	0.2	0.3
2018/3/9 12:00	0.2	0.3
2018/3/16 12:00	0.2	0.3
2018/3/23 12:00	0.1	0.2
2018/3/30 12:00	0.2	0.2
2018/4/6 12:00	0.1	0.2
2018/4/13 12:00	0.2	0.3
2018/4/20 12:00	0.2	0.3
2018/4/27 12:00	0.2	0.3
2018/5/4 12:00	0.1	0.2
2018/5/11 12:00	0.2	0.2
2018/5/18 12:00	0.1	0.2
2018/5/25 12:00	0.1	0.2
2018/6/1 12:00	0.1	0.2
2018/6/8 12:00	0.1	0.2
2018/6/15 12:00	0.1	0.3
2018/6/22 12:00	0.2	0.3
2018/6/29 12:00	0.2	0.3
2018/7/6 12:00	0.2	0.3
2018/7/13 12:00	0.2	0.3
2018/7/20 12:00	0.2	0.3
2018/7/27 12:00	0.2	0.4
2018/8/3 12:00	0.2	0.3
2018/8/10 12:00	0.2	0.4
2018/8/17 12:00	0.2	0.4
2018/8/24 12:00	0.2	0.4
2018/8/31 12:00	0.3	0.5
2018/9/7 12:00	0.3	0.4
2018/9/14 12:00	0.3	0.5
2018/9/21 12:00	0.3	0.5
2018/9/28 12:00	0.3	0.4
2018/10/5 12:00	0.3	0.4
2018/10/12 12:00	0.3	0.4
2018/10/19 12:00	0.3	0.5
2018/10/26 12:00	0.3	0.5
2018/11/2 12:00	0.3	0.5
2018/11/9 12:00	0.3	0.6
2018/11/16 12:00	0.3	0.6
2018/11/23 12:00	0.4	0.6
2018/11/30 12:00	0.4	0.6
2018/12/7 12:00	0.4	0.6
2018/12/14 12:00	0.4	0.7
2018/12/21 12:00	0.4	0.7
2018/12/28 12:00	0.4	0.7
2019/1/4 12:00	0.4	0.7
2019/1/11 12:00	0.4	0.7
2019/1/18 12:00	0.4	0.8
2019/1/25 12:00	0.4	0.8
2019/2/1 12:00	0.5	0.8
2019/2/8 12:00	0.5	0.8

[沈下量]

事業区域名 計測地点名	6丁目(道路部)				
	6E_1 沈下量 (cm)	6E_2 沈下量 (cm)	6E_3 沈下量 (cm)	6E_4 沈下量 (cm)	6D_1(ポンプ部) 沈下量 (cm)
2017/11/25 12:00	0.0	0.0	0.0	0.0	0.0
2017/12/25 12:00	0.1	0.1	0.2	0.2	0.1
2018/1/5 12:00	0.1	0.1	0.3	0.2	0.2
2018/1/12 12:00	0.1	0.1	0.3	0.3	0.2
2018/1/19 12:00	0.2	0.2	0.4	0.3	0.2
2018/1/26 12:00	0.2	0.2	0.4	0.3	0.2
2018/2/2 12:00	0.2	0.2	0.4	0.3	0.2
2018/2/9 12:00	0.2	0.2	0.4	0.3	0.3
2018/2/16 12:00	0.2	0.2	0.4	0.3	0.2
2018/2/23 12:00	0.2	0.2	0.5	0.3	0.3
2018/3/2 12:00	0.2	0.2	0.4	0.3	0.3
2018/3/9 12:00	0.2	0.2	0.4	0.3	0.2
2018/3/16 12:00	0.2	0.2	0.3	0.2	0.2
2018/3/23 12:00	0.1	0.2	0.3	0.2	0.2
2018/3/30 12:00	0.1	0.2	0.3	0.2	0.2
2018/4/6 12:00	0.1	0.2	0.3	0.2	0.2
2018/4/13 12:00	0.1	0.2	0.4	0.2	0.2
2018/4/20 12:00	0.1	0.2	0.4	0.3	0.2
2018/4/27 12:00	0.2	0.2	0.4	0.2	0.2
2018/5/4 12:00	0.1	0.2	0.3	0.2	0.2
2018/5/11 12:00	0.2	0.2	0.3	0.1	0.2
2018/5/18 12:00	0.1	0.1	0.3	0.1	0.1
2018/5/25 12:00	0.1	0.2	0.3	0.1	0.1
2018/6/1 12:00	0.1	0.2	0.3	0.2	0.2
2018/6/8 12:00	0.1	0.2	0.3	0.2	0.2
2018/6/15 12:00	0.2	0.2	0.4	0.2	0.2
2018/6/22 12:00	0.2	0.2	0.4	0.2	0.2
2018/6/29 12:00	0.2	0.2	0.4	0.3	0.3
2018/7/6 12:00	0.2	0.2	0.4	0.3	0.3
2018/7/13 12:00	0.2	0.2	0.4	0.3	0.3
2018/7/20 12:00	0.2	0.3	0.4	0.3	0.3
2018/7/27 12:00	0.2	0.3	0.5	0.3	0.3
2018/8/3 12:00	0.2	0.3	0.5	0.3	0.3
2018/8/10 12:00	0.3	0.3	0.5	0.4	0.4
2018/8/17 12:00	0.3	0.3	0.6	0.4	0.4
2018/8/24 12:00	0.3	0.4	0.6	0.4	0.4
2018/8/31 12:00	0.3	0.4	0.7	0.5	0.5
2018/9/7 12:00	0.3	0.4	0.7	0.5	0.5
2018/9/14 12:00	0.3	0.4	0.7	0.5	0.5
2018/9/21 12:00	0.3	0.4	0.7	0.5	0.5
2018/9/28 12:00	0.3	0.4	0.6	0.4	0.5
2018/10/5 12:00	0.3	0.4	0.6	0.5	0.5
2018/10/12 12:00	0.3	0.4	0.6	0.5	0.5
2018/10/19 12:00	0.3	0.4	0.7	0.5	0.5
2018/10/26 12:00	0.3	0.4	0.7	0.6	0.5
2018/11/2 12:00	0.3	0.4	0.8	0.6	0.5
2018/11/9 12:00	0.3	0.4	0.8	0.6	0.6
2018/11/16 12:00	0.4	0.4	0.8	0.6	0.6
2018/11/23 12:00	0.4	0.5	0.9	0.7	0.6
2018/11/30 12:00	0.4	0.5	0.9	0.7	0.6
2018/12/7 12:00	0.4	0.5	0.9	0.7	0.6
2018/12/14 12:00	0.4	0.5	0.9	0.7	0.6
2018/12/21 12:00	0.4	0.5	1.0	0.7	0.6
2018/12/28 12:00	0.4	0.5	1.0	0.8	0.6
2019/1/4 12:00	0.4	0.5	1.0	0.8	0.7
2019/1/11 12:00	0.5	0.5	1.0	0.8	0.7
2019/1/18 12:00	0.5	0.6	1.1	0.8	0.7
2019/1/25 12:00	0.5	0.6	1.1	0.9	0.7
2019/2/1 12:00	0.5	0.6	1.1	0.9	0.7
2019/2/8 12:00	0.5	0.6	1.2	0.9	0.8

[地下水位]

事業区域名	7・12丁目(民地部)			
計測地点名	7F_1		7F_2	
計測地点地盤高 (T.P.m)	9.31		8.50	
計測日	地下水位 (T.P.m)	地下水位 (GLm)	地下水位 (T.P.m)	地下水位 (GLm)
2017/11/25 12:00	7.75	-1.556	7.23	-1.266
2017/12/25 12:00	7.41	-1.896	6.78	-1.718
2018/1/5 12:00	7.31	-1.996	6.69	-1.806
2018/1/12 12:00	7.27	-2.042	6.65	-1.846
2018/1/19 12:00	7.24	-2.068	6.66	-1.844
2018/1/26 12:00	7.24	-2.071	6.70	-1.802
2018/2/2 12:00	7.17	-2.135	6.65	-1.850
2018/2/9 12:00	7.17	-2.145	6.66	-1.839
2018/2/16 12:00	7.17	-2.135	6.69	-1.814
2018/2/23 12:00	7.15	-2.164	6.65	-1.849
2018/3/2 12:00	7.20	-2.109	6.72	-1.781
2018/3/9 12:00	7.23	-2.081	6.82	-1.682
2018/3/16 12:00	7.38	-1.930	7.06	-1.442
2018/3/23 12:00	7.49	-1.825	7.20	-1.296
2018/3/30 12:00	7.51	-1.800	7.14	-1.358
2018/4/6 12:00	7.52	-1.787	7.14	-1.357
2018/4/13 12:00	7.49	-1.822	7.08	-1.419
2018/4/20 12:00	7.46	-1.850	7.08	-1.415
2018/4/27 12:00	7.49	-1.820	7.18	-1.318
2018/5/4 12:00	7.54	-1.775	7.21	-1.288
2018/5/11 12:00	7.51	-1.800	7.21	-1.293
2018/5/18 12:00	7.64	-1.666	7.29	-1.207
2018/5/25 12:00	7.65	-1.660	7.23	-1.269
2018/6/1 12:00	7.64	-1.672	7.18	-1.318
2018/6/8 12:00	7.61	-1.698	7.10	-1.397
2018/6/15 12:00	7.62	-1.694	7.10	-1.403
2018/6/22 12:00	7.62	-1.686	7.11	-1.391
2018/6/29 12:00	7.61	-1.700	7.02	-1.480
2018/7/6 12:00	7.58	-1.728	6.96	-1.537
2018/7/13 12:00	7.56	-1.751	6.98	-1.516
2018/7/20 12:00	7.55	-1.764	6.92	-1.583
2018/7/27 12:00	7.52	-1.788	6.88	-1.616
2018/8/3 12:00	7.55	-1.760	6.94	-1.565
2018/8/10 12:00	7.54	-1.766	6.85	-1.651
2018/8/17 12:00	7.50	-1.814	6.77	-1.728
2018/8/24 12:00	7.45	-1.857	6.67	-1.828
2018/8/31 12:00	7.42	-1.888	6.60	-1.898
2018/9/7 12:00	7.46	-1.847	6.80	-1.704
2018/9/14 12:00	7.46	-1.847	6.82	-1.682
2018/9/21 12:00	7.53	-1.779	6.90	-1.602
2018/9/28 12:00	7.69	-1.620	7.10	-1.401
2018/10/5 12:00	7.86	-1.450	7.05	-1.449
2018/10/12 12:00	7.84	-1.474	6.89	-1.611
2018/10/19 12:00	7.74	-1.566	6.79	-1.714
2018/10/26 12:00	7.65	-1.657	6.70	-1.798
2018/11/2 12:00	7.57	-1.744	6.62	-1.882
2018/11/9 12:00	7.52	-1.794	6.62	-1.882
2018/11/16 12:00	7.45	-1.856	6.54	-1.957
2018/11/23 12:00	7.42	-1.895	6.49	-2.008
2018/11/30 12:00	7.36	-1.947	6.43	-2.072
2018/12/7 12:00	7.34	-1.969	6.40	-2.096
2018/12/14 12:00	7.31	-2.003	6.41	-2.089
2018/12/21 12:00	7.27	-2.038	6.37	-2.132
2018/12/28 12:00	7.31	-2.003	6.33	-2.170
2019/1/4 12:00	7.30	-2.011	6.24	-2.258
2019/1/11 12:00	7.33	-1.980	6.24	-2.258
2019/1/18 12:00	7.32	-1.992	6.22	-2.282
2019/1/25 12:00	7.30	-2.006	6.18	-2.315
2019/2/1 12:00	7.31	-2.003	6.21	-2.294
2019/2/8 12:00	7.24	-2.069	6.25	-2.255
1段階目水位 2018/2/24まで	7.19	-2.12	7.19	-1.31
2段階目水位 2018/5/24まで	7.15	-2.17	7.15	-1.36
最終水位 2018/8/24まで	7.10	-2.21	7.10	-1.40

[地下水位]

事業区域名	7・12丁目(道路部)					
計測地点名	7E_1		7E_3		7E_4	
計測地点地盤高 (T.P.m)	8.88		9.11		8.92	
計測日	地下水位 (T.P.m)	地下水位 (GLm)	地下水位 (T.P.m)	地下水位 (GLm)	地下水位 (T.P.m)	地下水位 (GLm)
2017/11/25 12:00	6.95	-1.934	7.31	-1.801	7.28	-1.640
2017/12/25 12:00	6.37	-2.511	6.74	-2.370	6.71	-2.212
2018/1/5 12:00	6.38	-2.501	6.74	-2.367	6.71	-2.211
2018/1/12 12:00	6.37	-2.510	6.73	-2.380	6.70	-2.221
2018/1/19 12:00	6.35	-2.534	6.70	-2.405	6.67	-2.246
2018/1/26 12:00	6.40	-2.480	6.76	-2.352	6.73	-2.194
2018/2/2 12:00	6.41	-2.474	6.76	-2.348	6.73	-2.191
2018/2/9 12:00	6.41	-2.471	6.77	-2.343	6.73	-2.187
2018/2/16 12:00	6.38	-2.496	6.74	-2.369	6.70	-2.217
2018/2/23 12:00	6.34	-2.542	6.69	-2.418	6.66	-2.263
2018/3/2 12:00	6.41	-2.469	6.76	-2.351	6.73	-2.191
2018/3/9 12:00	6.77	-2.114	7.11	-2.003	7.08	-1.838
2018/3/16 12:00	6.90	-1.979	7.25	-1.864	7.21	-1.708
2018/3/23 12:00	7.07	-1.812	7.41	-1.695	7.37	-1.546
2018/3/30 12:00	6.90	-1.984	7.24	-1.875	7.20	-1.717
2018/4/6 12:00	6.88	-1.996	7.22	-1.889	7.19	-1.728
2018/4/13 12:00	6.84	-2.038	7.18	-1.930	7.15	-1.770
2018/4/20 12:00	6.85	-2.030	7.19	-1.918	7.16	-1.757
2018/4/27 12:00	6.94	-1.935	7.29	-1.821	7.26	-1.661
2018/5/4 12:00	6.89	-1.985	7.24	-1.869	7.21	-1.708
2018/5/11 12:00	6.98	-1.900	7.33	-1.785	7.29	-1.626
2018/5/18 12:00	6.96	-1.921	7.31	-1.804	7.28	-1.643
2018/5/25 12:00	6.84	-2.038	7.19	-1.925	7.16	-1.761
2018/6/1 12:00	6.56	-2.317	6.91	-2.200	6.88	-2.038
2018/6/8 12:00	6.61	-2.270	6.96	-2.151	6.93	-1.989
2018/6/15 12:00	6.42	-2.458	6.77	-2.339	6.74	-2.178
2018/6/22 12:00	6.41	-2.467	6.76	-2.346	6.73	-2.187
2018/6/29 12:00	6.42	-2.462	6.77	-2.336	6.74	-2.177
2018/7/6 12:00	6.41	-2.465	6.77	-2.338	6.71	-2.211
2018/7/13 12:00	6.41	-2.468	6.77	-2.337	6.74	-2.182
2018/7/20 12:00	6.40	-2.479	6.76	-2.349	6.73	-2.194
2018/7/27 12:00	6.40	-2.482	6.76	-2.349	6.72	-2.196
2018/8/3 12:00	6.07	-2.813	6.41	-2.702	6.29	-2.628
2018/8/10 12:00	6.04	-2.837	6.41	-2.702	6.30	-2.622
2018/8/17 12:00	5.84	-3.041	6.41	-2.696	6.28	-2.636
2018/8/24 12:00	5.81	-3.072	6.41	-2.699	6.27	-2.648
2018/8/31 12:00	5.82	-3.064	6.42	-2.695	6.26	-2.657
2018/9/7 12:00	6.04	-2.836	6.42	-2.693	6.27	-2.649
2018/9/14 12:00	6.05	-2.830	6.42	-2.687	6.27	-2.649
2018/9/21 12:00	6.11	-2.772	6.43	-2.681	6.27	-2.648
2018/9/28 12:00	6.11	-2.765	6.43	-2.682	6.28	-2.643
2018/10/5 12:00	6.10	-2.776	6.43	-2.679	6.27	-2.647
2018/10/12 12:00	6.07	-2.808	6.43	-2.684	6.27	-2.648
2018/10/19 12:00	6.05	-2.835	6.42	-2.686	6.27	-2.648
2018/10/26 12:00	5.95	-2.929	6.43	-2.683	6.27	-2.647
2018/11/2 12:00	5.96	-2.924	6.43	-2.681	6.26	-2.655
2018/11/9 12:00	5.97	-2.912	6.43	-2.680	6.26	-2.658
2018/11/16 12:00	5.96	-2.923	6.43	-2.680	6.26	-2.655
2018/11/23 12:00	5.96	-2.920	6.43	-2.680	6.26	-2.655
2018/11/30 12:00	5.96	-2.918	6.43	-2.681	6.26	-2.658
2018/12/7 12:00	5.97	-2.914	6.42	-2.685	6.26	-2.658
2018/12/14 12:00	6.00	-2.883	6.43	-2.681	6.27	-2.647
2018/12/21 12:00	5.98	-2.902	6.43	-2.680	6.27	-2.648
2018/12/28 12:00	5.98	-2.899	6.43	-2.680	6.27	-2.648
2019/1/4 12:00	5.99	-2.891	6.43	-2.680	6.27	-2.647
2019/1/11 12:00	5.99	-2.890	6.43	-2.678	6.27	-2.647
2019/1/18 12:00	5.99	-2.889	6.43	-2.679	6.27	-2.649
2019/1/25 12:00	5.99	-2.889	6.43	-2.678	6.27	-2.650
2019/2/1 12:00	5.99	-2.889	6.43	-2.679	6.27	-2.646
2019/2/8 12:00	5.99	-2.890	6.43	-2.679	6.27	-2.650

※7E_2は欠番

[沈下量]

事業区域名	7・12丁目(民地部)	
	7F_1	7F_2
計測地点名	沈下量 (cm)	沈下量 (cm)
計測日	沈下量 (cm)	沈下量 (cm)
2017/11/25 12:00	0.0	0.0
2017/12/25 12:00	0.2	0.1
2018/1/5 12:00	0.2	0.1
2018/1/12 12:00	0.3	0.1
2018/1/19 12:00	0.3	0.1
2018/1/26 12:00	0.3	0.1
2018/2/2 12:00	0.4	0.2
2018/2/9 12:00	0.4	0.2
2018/2/16 12:00	0.4	0.2
2018/2/23 12:00	0.4	0.2
2018/3/2 12:00	0.4	0.2
2018/3/9 12:00	0.4	0.2
2018/3/16 12:00	0.4	0.2
2018/3/23 12:00	0.3	0.2
2018/3/30 12:00	0.4	0.2
2018/4/6 12:00	0.3	0.2
2018/4/13 12:00	0.4	0.2
2018/4/20 12:00	0.4	0.2
2018/4/27 12:00	0.4	0.2
2018/5/4 12:00	0.3	0.2
2018/5/11 12:00	0.3	0.2
2018/5/18 12:00	0.3	0.2
2018/5/25 12:00	0.3	0.2
2018/6/1 12:00	0.3	0.2
2018/6/8 12:00	0.3	0.2
2018/6/15 12:00	0.3	0.2
2018/6/22 12:00	0.3	0.2
2018/6/29 12:00	0.4	0.2
2018/7/6 12:00	0.4	0.3
2018/7/13 12:00	0.4	0.3
2018/7/20 12:00	0.4	0.3
2018/7/27 12:00	0.4	0.3
2018/8/3 12:00	0.4	0.4
2018/8/10 12:00	0.5	0.4
2018/8/17 12:00	0.5	0.4
2018/8/24 12:00	0.6	0.5
2018/8/31 12:00	0.7	0.5
2018/9/7 12:00	0.7	0.5
2018/9/14 12:00	0.7	0.5
2018/9/21 12:00	0.7	0.5
2018/9/28 12:00	0.6	0.5
2018/10/5 12:00	0.6	0.5
2018/10/12 12:00	0.6	0.5
2018/10/19 12:00	0.6	0.5
2018/10/26 12:00	0.7	0.5
2018/11/2 12:00	0.7	0.5
2018/11/9 12:00	0.7	0.5
2018/11/16 12:00	0.7	0.5
2018/11/23 12:00	0.7	0.5
2018/11/30 12:00	0.8	0.5
2018/12/7 12:00	0.8	0.6
2018/12/14 12:00	0.8	0.6
2018/12/21 12:00	0.8	0.6
2018/12/28 12:00	0.8	0.6
2019/1/4 12:00	0.9	0.6
2019/1/11 12:00	0.9	0.6
2019/1/18 12:00	0.9	0.7
2019/1/25 12:00	0.9	0.7
2019/2/1 12:00	1.0	0.7
2019/2/8 12:00	1.0	0.7

[沈下量]

事業区域名 計測地点名	7・12丁目(道路部)			
	7E_1	7E_3	7E_4	7D_1(ポンプ部)
計測日	沈下量 (cm)	沈下量 (cm)	沈下量 (cm)	沈下量 (cm)
2017/11/25 12:00	0.0	0.0	0.0	0.0
2017/12/25 12:00	0.1	0.2	0.2	0.1
2018/1/5 12:00	0.1	0.2	0.3	0.1
2018/1/12 12:00	0.1	0.3	0.3	0.2
2018/1/19 12:00	0.1	0.3	0.3	0.2
2018/1/26 12:00	0.1	0.3	0.3	0.2
2018/2/2 12:00	0.1	0.4	0.4	0.2
2018/2/9 12:00	0.2	0.4	0.4	0.2
2018/2/16 12:00	0.2	0.4	0.4	0.2
2018/2/23 12:00	0.2	0.4	0.4	0.2
2018/3/2 12:00	0.2	0.4	0.4	0.3
2018/3/9 12:00	0.2	0.4	0.4	0.3
2018/3/16 12:00	0.2	0.4	0.3	0.2
2018/3/23 12:00	0.2	0.4	0.3	0.2
2018/3/30 12:00	0.2	0.4	0.3	0.2
2018/4/6 12:00	0.2	0.3	0.3	0.2
2018/4/13 12:00	0.2	0.4	0.3	0.2
2018/4/20 12:00	0.2	0.4	0.3	0.2
2018/4/27 12:00	0.2	0.4	0.3	0.2
2018/5/4 12:00	0.2	0.3	0.3	0.2
2018/5/11 12:00	0.2	0.4	0.3	0.2
2018/5/18 12:00	0.2	0.3	0.2	0.2
2018/5/25 12:00	0.2	0.3	0.2	0.2
2018/6/1 12:00	0.2	0.3	0.3	0.3
2018/6/8 12:00	0.2	0.4	0.3	0.3
2018/6/15 12:00	0.2	0.4	0.3	0.3
2018/6/22 12:00	0.2	0.4	0.3	0.3
2018/6/29 12:00	0.3	0.4	0.4	0.3
2018/7/6 12:00	0.3	0.4	0.4	0.4
2018/7/13 12:00	0.3	0.4	0.4	0.4
2018/7/20 12:00	0.3	0.5	0.4	0.4
2018/7/27 12:00	0.4	0.5	0.4	0.4
2018/8/3 12:00	0.4	0.5	0.4	0.5
2018/8/10 12:00	0.4	0.5	0.5	0.5
2018/8/17 12:00	0.4	0.5	0.5	0.5
2018/8/24 12:00	0.5	0.6	0.6	0.6
2018/8/31 12:00	0.5	0.6	0.6	0.6
2018/9/7 12:00	0.5	0.6	0.6	0.6
2018/9/14 12:00	0.5	0.6	0.6	0.6
2018/9/21 12:00	0.5	0.6	0.6	0.6
2018/9/28 12:00	0.5	0.6	0.6	0.6
2018/10/5 12:00	0.5	0.5	0.6	0.6
2018/10/12 12:00	0.5	0.6	0.6	0.6
2018/10/19 12:00	0.5	0.6	0.6	0.6
2018/10/26 12:00	0.5	0.6	0.7	0.6
2018/11/2 12:00	0.5	0.6	0.7	0.6
2018/11/9 12:00	0.5	0.7	0.7	0.6
2018/11/16 12:00	0.5	0.7	0.7	0.6
2018/11/23 12:00	0.5	0.7	0.7	0.6
2018/11/30 12:00	0.5	0.7	0.8	0.6
2018/12/7 12:00	0.5	0.7	0.8	0.6
2018/12/14 12:00	0.6	0.8	0.8	0.7
2018/12/21 12:00	0.6	0.8	0.8	0.7
2018/12/28 12:00	0.6	0.8	0.8	0.7
2019/1/4 12:00	0.6	0.8	0.9	0.7
2019/1/11 12:00	0.6	0.8	0.9	0.7
2019/1/18 12:00	0.6	0.8	0.9	0.7
2019/1/25 12:00	0.6	0.9	1.0	0.8
2019/2/1 12:00	0.6	0.9	1.0	0.8
2019/2/8 12:00	0.7	0.9	1.0	0.8

※7E_2は欠番

[地下水位]

事業区域名	8丁目(民地部)	
計測地点名	8F_1	
計測地点地盤高 (T.P.m)	9.30	
計測日	地下水位 (T.P.m)	地下水位 (GLm)
2017/11/25 12:00	8.09	-1.211
2017/12/25 12:00	7.71	-1.589
2018/1/5 12:00	7.57	-1.726
2018/1/12 12:00	7.52	-1.782
2018/1/19 12:00	7.51	-1.790
2018/1/26 12:00	7.56	-1.740
2018/2/2 12:00	7.44	-1.859
2018/2/9 12:00	7.53	-1.765
2018/2/16 12:00	7.63	-1.666
2018/2/23 12:00	7.61	-1.694
2018/3/2 12:00	7.97	-1.327
2018/3/9 12:00	9.25	-0.049
2018/3/16 12:00	8.19	-1.105
2018/3/23 12:00	8.69	-0.613
2018/3/30 12:00	8.10	-1.202
2018/4/6 12:00	8.08	-1.221
2018/4/13 12:00	7.92	-1.379
2018/4/20 12:00	7.89	-1.408
2018/4/27 12:00	7.99	-1.309
2018/5/4 12:00	7.98	-1.317
2018/5/11 12:00	8.20	-1.099
2018/5/18 12:00	8.25	-1.049
2018/5/25 12:00	8.09	-1.206
2018/6/1 12:00	7.98	-1.319
2018/6/8 12:00	7.96	-1.343
2018/6/15 12:00	7.90	-1.400
2018/6/22 12:00	7.98	-1.316
2018/6/29 12:00	7.92	-1.382
2018/7/6 12:00	7.86	-1.440
2018/7/13 12:00	7.84	-1.459
2018/7/20 12:00	7.79	-1.515
2018/7/27 12:00	7.74	-1.562
2018/8/3 12:00	7.69	-1.614
2018/8/10 12:00	7.62	-1.680
2018/8/17 12:00	7.53	-1.765
2018/8/24 12:00	7.49	-1.812
2018/8/31 12:00	7.42	-1.875
2018/9/7 12:00	7.50	-1.796
2018/9/14 12:00	7.74	-1.559
2018/9/21 12:00	9.23	-0.071
2018/9/28 12:00	8.83	-0.466
2018/10/5 12:00	8.21	-1.090
2018/10/12 12:00	7.99	-1.310
2018/10/19 12:00	7.86	-1.445
2018/10/26 12:00	7.74	-1.562
2018/11/2 12:00	7.62	-1.677
2018/11/9 12:00	7.78	-1.522
2018/11/16 12:00	7.73	-1.568
2018/11/23 12:00	7.67	-1.628
2018/11/30 12:00	7.64	-1.660
2018/12/7 12:00	7.63	-1.668
2018/12/14 12:00	7.61	-1.685
2018/12/21 12:00	7.60	-1.696
2018/12/28 12:00	10.55	1.253
2019/1/4 12:00	7.34	-1.961
2019/1/11 12:00	8.90	-0.400
2019/1/18 12:00	6.66	-2.639
2019/1/25 12:00	7.34	-1.957
2019/2/1 12:00	7.34	-1.964
2019/2/8 12:00	7.29	-2.013
1段階目水位 2018/2/24まで	7.71	-1.59
2段階目水位 2018/5/24まで	7.70	-1.60
最終水位 2018/8/24まで	7.69	-1.61

[地下水位]

事業区域名	8丁目(道路部)	
計測地点名	8E_1	
計測地点地盤高 (T.P.m)	8.94	
計測日	地下水位 (T.P.m)	地下水位 (GLm)
2017/11/25 12:00	7.71	-1.227
2017/12/25 12:00	7.30	-1.640
2018/1/5 12:00	7.29	-1.651
2018/1/12 12:00	7.27	-1.666
2018/1/19 12:00	7.28	-1.662
2018/1/26 12:00	7.36	-1.577
2018/2/2 12:00	7.37	-1.566
2018/2/9 12:00	7.41	-1.535
2018/2/16 12:00	7.43	-1.512
2018/2/23 12:00	7.45	-1.493
2018/3/2 12:00	7.61	-1.332
2018/3/9 12:00	7.93	-1.008
2018/3/16 12:00	7.92	-1.024
2018/3/23 12:00	7.92	-1.021
2018/3/30 12:00	7.89	-1.047
2018/4/6 12:00	7.83	-1.110
2018/4/13 12:00	7.72	-1.215
2018/4/20 12:00	7.74	-1.202
2018/4/27 12:00	7.86	-1.083
2018/5/4 12:00	7.80	-1.142
2018/5/11 12:00	7.93	-1.014
2018/5/18 12:00	7.92	-1.024
2018/5/25 12:00	7.77	-1.171
2018/6/1 12:00	7.63	-1.311
2018/6/8 12:00	7.63	-1.313
2018/6/15 12:00	7.47	-1.474
2018/6/22 12:00	7.42	-1.521
2018/6/29 12:00	7.50	-1.444
2018/7/6 12:00	7.41	-1.526
2018/7/13 12:00	7.47	-1.468
2018/7/20 12:00	7.50	-1.436
2018/7/27 12:00	7.47	-1.468
2018/8/3 12:00	5.76	-3.178
2018/8/10 12:00	5.77	-3.175
2018/8/17 12:00	5.78	-3.163
2018/8/24 12:00	5.78	-3.162
2018/8/31 12:00	6.66	-2.279
2018/9/7 12:00	5.88	-3.057
2018/9/14 12:00	5.73	-3.213
2018/9/21 12:00	5.88	-3.055
2018/9/28 12:00	5.89	-3.052
2018/10/5 12:00	5.89	-3.052
2018/10/12 12:00	5.89	-3.049
2018/10/19 12:00	5.90	-3.045
2018/10/26 12:00	5.90	-3.044
2018/11/2 12:00	5.90	-3.040
2018/11/9 12:00	5.90	-3.039
2018/11/16 12:00	5.90	-3.039
2018/11/23 12:00	5.91	-3.028
2018/11/30 12:00	5.90	-3.036
2018/12/7 12:00	5.90	-3.035
2018/12/14 12:00	5.91	-3.032
2018/12/21 12:00	5.91	-3.028
2018/12/28 12:00	5.91	-3.027
2019/1/4 12:00	5.92	-3.024
2019/1/11 12:00	5.92	-3.021
2019/1/18 12:00	5.92	-3.020
2019/1/25 12:00	5.92	-3.019
2019/2/1 12:00	5.92	-3.018
2019/2/8 12:00	5.92	-3.022

[沈下量]

事業区域名	8丁目(民地部)
計測地点名	8F_1
計測日	沈下量 (cm)
2017/11/25 12:00	0.0
2017/12/25 12:00	0.2
2018/1/5 12:00	0.2
2018/1/12 12:00	0.2
2018/1/19 12:00	0.3
2018/1/26 12:00	0.3
2018/2/2 12:00	0.4
2018/2/9 12:00	0.4
2018/2/16 12:00	0.3
2018/2/23 12:00	0.4
2018/3/2 12:00	0.3
2018/3/9 12:00	0.3
2018/3/16 12:00	0.3
2018/3/23 12:00	0.2
2018/3/30 12:00	0.2
2018/4/6 12:00	0.2
2018/4/13 12:00	0.2
2018/4/20 12:00	0.3
2018/4/27 12:00	0.3
2018/5/4 12:00	0.2
2018/5/11 12:00	0.2
2018/5/18 12:00	0.2
2018/5/25 12:00	0.2
2018/6/1 12:00	0.2
2018/6/8 12:00	0.2
2018/6/15 12:00	0.2
2018/6/22 12:00	0.2
2018/6/29 12:00	0.2
2018/7/6 12:00	0.3
2018/7/13 12:00	0.3
2018/7/20 12:00	0.3
2018/7/27 12:00	0.3
2018/8/3 12:00	0.4
2018/8/10 12:00	0.4
2018/8/17 12:00	0.4
2018/8/24 12:00	0.5
2018/8/31 12:00	0.5
2018/9/7 12:00	0.5
2018/9/14 12:00	0.5
2018/9/21 12:00	0.4
2018/9/28 12:00	0.3
2018/10/5 12:00	0.3
2018/10/12 12:00	0.3
2018/10/19 12:00	0.4
2018/10/26 12:00	0.4
2018/11/2 12:00	0.5
2018/11/9 12:00	0.5
2018/11/16 12:00	0.5
2018/11/23 12:00	0.5
2018/11/30 12:00	0.6
2018/12/7 12:00	0.6
2018/12/14 12:00	0.6
2018/12/21 12:00	0.6
2018/12/28 12:00	0.6
2019/1/4 12:00	0.7
2019/1/11 12:00	0.7
2019/1/18 12:00	0.7
2019/1/25 12:00	0.7
2019/2/1 12:00	0.8
2019/2/8 12:00	0.8

[沈下量]

事業区域名	8丁目(道路部)	
	8E_1	8D_1(ポンプ部)
計測地点名	沈下量 (cm)	沈下量 (cm)
計測日	沈下量 (cm)	沈下量 (cm)
2017/11/25 12:00	0.0	0.0
2017/12/25 12:00	0.3	0.1
2018/1/5 12:00	0.3	0.1
2018/1/12 12:00	0.3	0.1
2018/1/19 12:00	0.4	0.1
2018/1/26 12:00	0.4	0.1
2018/2/2 12:00	0.4	0.2
2018/2/9 12:00	0.4	0.2
2018/2/16 12:00	0.4	0.2
2018/2/23 12:00	0.4	0.2
2018/3/2 12:00	0.4	0.2
2018/3/9 12:00	0.4	0.2
2018/3/16 12:00	0.4	0.1
2018/3/23 12:00	0.3	0.1
2018/3/30 12:00	0.3	0.1
2018/4/6 12:00	0.3	0.1
2018/4/13 12:00	0.3	0.1
2018/4/20 12:00	0.4	0.1
2018/4/27 12:00	0.4	0.1
2018/5/4 12:00	0.4	0.1
2018/5/11 12:00	0.4	0.1
2018/5/18 12:00	0.3	0.1
2018/5/25 12:00	0.3	0.1
2018/6/1 12:00	0.4	0.1
2018/6/8 12:00	0.4	0.1
2018/6/15 12:00	0.4	0.1
2018/6/22 12:00	0.4	0.1
2018/6/29 12:00	0.4	0.2
2018/7/6 12:00	0.4	0.2
2018/7/13 12:00	0.5	0.2
2018/7/20 12:00	0.5	0.2
2018/7/27 12:00	0.5	0.2
2018/8/3 12:00	0.6	0.2
2018/8/10 12:00	0.7	0.3
2018/8/17 12:00	0.7	0.3
2018/8/24 12:00	0.8	0.4
2018/8/31 12:00	0.8	0.4
2018/9/7 12:00	0.8	0.4
2018/9/14 12:00	0.9	0.4
2018/9/21 12:00	0.9	0.4
2018/9/28 12:00	0.8	0.3
2018/10/5 12:00	0.8	0.3
2018/10/12 12:00	0.8	0.3
2018/10/19 12:00	0.9	0.4
2018/10/26 12:00	0.9	0.4
2018/11/2 12:00	1.0	0.4
2018/11/9 12:00	1.0	0.4
2018/11/16 12:00	1.2	0.4
2018/11/23 12:00	1.2	0.4
2018/11/30 12:00	1.3	0.4
2018/12/7 12:00	1.3	0.4
2018/12/14 12:00	1.3	0.4
2018/12/21 12:00	1.4	0.5
2018/12/28 12:00	1.4	0.4
2019/1/4 12:00	1.4	0.5
2019/1/11 12:00	1.5	0.5
2019/1/18 12:00	1.5	0.5
2019/1/25 12:00	1.5	0.5
2019/2/1 12:00	1.6	0.5
2019/2/8 12:00	1.6	0.5

[地下水位]

事業区域名	10丁目(民地部)			
計測地点名	10F_1		10F_2	
計測地点地盤高 (T.P.m)	8.96		9.15	
計測日	地下水位 (T.P.m)	地下水位 (GLm)	地下水位 (T.P.m)	地下水位 (GLm)
2017/11/25 12:00	7.13	-1.827	7.30	-1.848
2017/12/25 12:00	6.69	-2.274	7.01	-2.138
2018/1/5 12:00	6.69	-2.274	6.92	-2.232
2018/1/12 12:00	6.67	-2.286	6.89	-2.261
2018/1/19 12:00	6.66	-2.298	6.89	-2.262
2018/1/26 12:00	6.69	-2.274	6.90	-2.245
2018/2/2 12:00	6.70	-2.258	6.84	-2.308
2018/2/9 12:00	6.72	-2.235	6.87	-2.281
2018/2/16 12:00	6.72	-2.239	6.89	-2.264
2018/2/23 12:00	6.70	-2.256	6.85	-2.303
2018/3/2 12:00	6.72	-2.240	6.93	-2.222
2018/3/9 12:00	6.82	-2.143	6.93	-2.218
2018/3/16 12:00	7.04	-1.919	7.07	-2.083
2018/3/23 12:00	7.09	-1.866	7.15	-2.002
2018/3/30 12:00	7.05	-1.910	7.12	-2.025
2018/4/6 12:00	7.02	-1.936	7.13	-2.017
2018/4/13 12:00	6.98	-1.981	7.10	-2.050
2018/4/20 12:00	6.98	-1.979	7.08	-2.068
2018/4/27 12:00	7.06	-1.901	7.13	-2.017
2018/5/4 12:00	7.08	-1.880	7.18	-1.965
2018/5/11 12:00	7.17	-1.789	7.16	-1.991
2018/5/18 12:00	7.24	-1.721	7.27	-1.876
2018/5/25 12:00	7.16	-1.801	7.27	-1.880
2018/6/1 12:00	7.07	-1.887	7.25	-1.899
2018/6/8 12:00	7.04	-1.924	7.22	-1.931
2018/6/15 12:00	6.94	-2.023	7.20	-1.950
2018/6/22 12:00	6.70	-2.263	7.19	-1.963
2018/6/29 12:00	6.62	-2.339	7.13	-2.020
2018/7/6 12:00	6.59	-2.371	7.08	-2.065
2018/7/13 12:00	6.58	-2.380	7.06	-2.095
2018/7/20 12:00	6.57	-2.393	7.01	-2.136
2018/7/27 12:00	6.56	-2.401	6.97	-2.176
2018/8/3 12:00	6.54	-2.424	7.02	-2.131
2018/8/10 12:00	6.48	-2.483	7.01	-2.138
2018/8/17 12:00	6.45	-2.514	6.97	-2.177
2018/8/24 12:00	6.43	-2.532	6.94	-2.212
2018/8/31 12:00	6.40	-2.559	6.92	-2.231
2018/9/7 12:00	6.46	-2.496	6.99	-2.160
2018/9/14 12:00	6.46	-2.502	6.99	-2.157
2018/9/21 12:00	6.48	-2.478	7.06	-2.093
2018/9/28 12:00	6.61	-2.354	7.14	-2.010
2018/10/5 12:00	6.60	-2.355	7.14	-2.013
2018/10/12 12:00	6.50	-2.459	7.14	-2.011
2018/10/19 12:00	6.45	-2.511	7.07	-2.080
2018/10/26 12:00	6.41	-2.547	7.01	-2.138
2018/11/2 12:00	6.39	-2.569	6.95	-2.196
2018/11/9 12:00	6.39	-2.573	6.96	-2.191
2018/11/16 12:00	6.37	-2.585	6.92	-2.228
2018/11/23 12:00	6.36	-2.596	6.91	-2.240
2018/11/30 12:00	6.35	-2.606	6.89	-2.264
2018/12/7 12:00	6.34	-2.617	6.89	-2.263
2018/12/14 12:00	6.34	-2.617	6.86	-2.285
2018/12/21 12:00	6.33	-2.633	6.84	-2.305
2018/12/28 12:00	6.32	-2.641	6.86	-2.289
2019/1/4 12:00	6.31	-2.650	6.79	-2.357
2019/1/11 12:00	6.35	-2.608	6.81	-2.342
2019/1/18 12:00	6.42	-2.536	6.80	-2.350
2019/1/25 12:00	6.44	-2.518	6.77	-2.381
2019/2/1 12:00	6.46	-2.504	6.78	-2.368
2019/2/8 12:00	6.44	-2.516	6.77	-2.385
1段階目水位 2018/2/24まで	6.94	-2.02	6.94	-2.21
2段階目水位 2018/5/24まで	6.75	-2.21	6.75	-2.40
最終水位 2018/8/24まで	6.56	-2.40	6.56	-2.59

[地下水位]

事業区域名	10丁目(道路部)							
計測地点名	10E_1		10E_2		10E_3		10E_4	
計測地点地盤高 (T.P.m)	8.67		8.96		8.49		8.58	
計測日	地下水位 (T.P.m)	地下水位 (GLm)	地下水位 (T.P.m)	地下水位 (GLm)	地下水位 (T.P.m)	地下水位 (GLm)	地下水位 (T.P.m)	地下水位 (GLm)
2017/11/25 12:00	7.18	-1.487	7.14	-1.822	7.21	-1.280	7.25	-1.327
2017/12/25 12:00	6.76	-1.909	6.72	-2.245	6.79	-1.698	6.84	-1.740
2018/1/5 12:00	6.75	-1.922	6.71	-2.253	6.78	-1.706	6.83	-1.752
2018/1/12 12:00	6.74	-1.932	6.70	-2.261	6.77	-1.716	6.82	-1.760
2018/1/19 12:00	6.73	-1.939	6.70	-2.263	6.76	-1.726	6.81	-1.771
2018/1/26 12:00	6.78	-1.895	6.74	-2.221	6.81	-1.680	6.86	-1.724
2018/2/2 12:00	6.78	-1.888	6.75	-2.210	6.82	-1.674	6.86	-1.715
2018/2/9 12:00	6.79	-1.877	6.76	-2.197	6.83	-1.662	6.88	-1.703
2018/2/16 12:00	6.78	-1.886	6.75	-2.207	6.82	-1.673	6.87	-1.713
2018/2/23 12:00	6.77	-1.904	6.74	-2.224	6.80	-1.690	6.85	-1.731
2018/3/2 12:00	6.84	-1.830	6.80	-2.159	6.87	-1.624	6.92	-1.660
2018/3/9 12:00	7.09	-1.582	7.06	-1.905	7.11	-1.375	7.17	-1.409
2018/3/16 12:00	7.09	-1.583	7.05	-1.909	7.12	-1.368	7.17	-1.408
2018/3/23 12:00	7.21	-1.459	7.18	-1.782	7.25	-1.241	7.30	-1.283
2018/3/30 12:00	7.03	-1.637	6.99	-1.966	7.07	-1.424	7.11	-1.465
2018/4/6 12:00	7.06	-1.614	7.01	-1.947	7.09	-1.403	7.13	-1.446
2018/4/13 12:00	7.01	-1.656	6.96	-1.996	7.04	-1.448	7.09	-1.491
2018/4/20 12:00	7.03	-1.638	6.98	-1.979	7.06	-1.429	7.11	-1.470
2018/4/27 12:00	7.14	-1.526	7.09	-1.869	7.17	-1.317	7.22	-1.361
2018/5/4 12:00	7.13	-1.541	7.07	-1.886	7.16	-1.334	7.20	-1.376
2018/5/11 12:00	7.23	-1.435	7.18	-1.781	7.27	-1.224	7.31	-1.269
2018/5/18 12:00	7.26	-1.409	7.20	-1.758	7.29	-1.199	7.34	-1.245
2018/5/25 12:00	7.19	-1.479	7.13	-1.833	7.22	-1.273	7.26	-1.318
2018/6/1 12:00	7.06	-1.606	7.00	-1.963	7.09	-1.397	7.14	-1.444
2018/6/8 12:00	6.98	-1.688	6.91	-2.050	7.01	-1.481	7.05	-1.530
2018/6/15 12:00	6.67	-1.995	6.61	-2.351	6.69	-1.799	6.72	-1.862
2018/6/22 12:00	6.60	-2.070	6.54	-2.423	6.63	-1.862	6.66	-1.921
2018/6/29 12:00	6.59	-2.081	6.52	-2.438	6.62	-1.873	6.65	-1.931
2018/7/6 12:00	6.61	-2.065	6.54	-2.416	6.63	-1.865	6.65	-1.926
2018/7/13 12:00	6.59	-2.085	6.53	-2.432	6.61	-1.880	6.64	-1.943
2018/7/20 12:00	6.59	-2.082	6.53	-2.430	6.61	-1.880	6.64	-1.939
2018/7/27 12:00	6.57	-2.105	6.51	-2.449	6.60	-1.888	6.63	-1.952
2018/8/3 12:00	6.42	-2.248	6.35	-2.608	6.47	-2.022	6.48	-2.104
2018/8/10 12:00	6.41	-2.260	6.35	-2.611	6.47	-2.024	6.48	-2.101
2018/8/17 12:00	6.41	-2.259	6.36	-2.604	6.46	-2.032	6.48	-2.101
2018/8/24 12:00	6.37	-2.295	6.35	-2.609	6.43	-2.058	6.44	-2.142
2018/8/31 12:00	6.36	-2.306	6.34	-2.618	6.42	-2.074	6.43	-2.146
2018/9/7 12:00	6.36	-2.308	6.35	-2.610	6.44	-2.045	6.44	-2.136
2018/9/14 12:00	6.36	-2.315	6.36	-2.599	6.44	-2.054	6.44	-2.142
2018/9/21 12:00	6.40	-2.273	6.38	-2.585	6.46	-2.032	6.47	-2.106
2018/9/28 12:00	6.41	-2.257	6.38	-2.583	6.48	-2.010	6.49	-2.085
2018/10/5 12:00	6.40	-2.268	6.38	-2.582	6.47	-2.015	6.49	-2.095
2018/10/12 12:00	6.38	-2.285	6.37	-2.589	6.46	-2.032	6.47	-2.110
2018/10/19 12:00	6.37	-2.303	6.37	-2.593	6.45	-2.043	6.46	-2.121
2018/10/26 12:00	6.37	-2.300	6.36	-2.595	6.44	-2.054	6.44	-2.142
2018/11/2 12:00	6.36	-2.315	6.36	-2.595	6.44	-2.052	6.44	-2.137
2018/11/9 12:00	6.35	-2.318	6.37	-2.593	6.44	-2.048	6.44	-2.137
2018/11/16 12:00	6.35	-2.321	6.37	-2.590	6.44	-2.052	6.44	-2.138
2018/11/23 12:00	6.35	-2.320	6.37	-2.586	6.44	-2.045	6.45	-2.132
2018/11/30 12:00	6.35	-2.324	6.38	-2.580	6.44	-2.047	6.43	-2.148
2018/12/7 12:00	6.34	-2.326	6.39	-2.574	6.44	-2.049	6.45	-2.135
2018/12/14 12:00	6.35	-2.325	6.40	-2.562	6.45	-2.036	6.44	-2.138
2018/12/21 12:00	6.34	-2.327	6.40	-2.559	6.45	-2.040	6.46	-2.119
2018/12/28 12:00	6.33	-2.337	6.41	-2.553	6.45	-2.042	6.44	-2.136
2019/1/4 12:00	6.33	-2.336	6.41	-2.547	6.45	-2.040	6.46	-2.115
2019/1/11 12:00	6.34	-2.334	6.42	-2.544	6.45	-2.040	6.47	-2.113
2019/1/18 12:00	6.34	-2.334	6.42	-2.541	6.44	-2.047	6.45	-2.126
2019/1/25 12:00	6.33	-2.338	6.42	-2.542	6.45	-2.042	6.47	-2.110
2019/2/1 12:00	6.33	-2.337	6.42	-2.540	6.45	-2.039	6.47	-2.111
2019/2/8 12:00	6.33	-2.340	6.42	-2.542	6.45	-2.041	6.47	-2.108

[沈下量]

事業区域名 計測地点名	10丁目(民地部)	
	10F_1	10F_2
計測日	沈下量 (cm)	沈下量 (cm)
2017/11/25 12:00	0.0	0.0
2017/12/25 12:00	0.0	0.1
2018/1/5 12:00	0.1	0.1
2018/1/12 12:00	0.1	0.1
2018/1/19 12:00	0.1	0.2
2018/1/26 12:00	0.1	0.2
2018/2/2 12:00	0.2	0.2
2018/2/9 12:00	0.2	0.2
2018/2/16 12:00	0.2	0.3
2018/2/23 12:00	0.2	0.3
2018/3/2 12:00	0.2	0.3
2018/3/9 12:00	0.2	0.4
2018/3/16 12:00	0.3	0.4
2018/3/23 12:00	0.3	0.4
2018/3/30 12:00	0.3	0.4
2018/4/6 12:00	0.3	0.4
2018/4/13 12:00	0.3	0.4
2018/4/20 12:00	0.3	0.4
2018/4/27 12:00	0.3	0.4
2018/5/4 12:00	0.3	0.4
2018/5/11 12:00	0.3	0.5
2018/5/18 12:00	0.3	0.5
2018/5/25 12:00	0.3	0.5
2018/6/1 12:00	0.3	0.5
2018/6/8 12:00	0.4	0.5
2018/6/15 12:00	0.4	0.5
2018/6/22 12:00	0.4	0.6
2018/6/29 12:00	0.4	0.6
2018/7/6 12:00	0.5	0.6
2018/7/13 12:00	0.5	0.6
2018/7/20 12:00	0.5	0.7
2018/7/27 12:00	0.5	0.7
2018/8/3 12:00	0.6	0.7
2018/8/10 12:00	0.6	0.8
2018/8/17 12:00	0.7	0.8
2018/8/24 12:00	0.7	0.8
2018/8/31 12:00	0.7	0.9
2018/9/7 12:00	0.8	0.9
2018/9/14 12:00	0.8	0.9
2018/9/21 12:00	0.8	0.9
2018/9/28 12:00	0.9	0.9
2018/10/5 12:00	0.9	1.0
2018/10/12 12:00	0.9	0.9
2018/10/19 12:00	0.9	0.9
2018/10/26 12:00	0.9	1.0
2018/11/2 12:00	0.9	1.0
2018/11/9 12:00	0.9	1.0
2018/11/16 12:00	1.0	1.0
2018/11/23 12:00	1.0	1.0
2018/11/30 12:00	1.0	1.0
2018/12/7 12:00	1.0	1.0
2018/12/14 12:00	1.0	1.1
2018/12/21 12:00	1.0	1.1
2018/12/28 12:00	1.0	1.1
2019/1/4 12:00	1.1	1.1
2019/1/11 12:00	1.0	1.1
2019/1/18 12:00	1.1	1.1
2019/1/25 12:00	1.1	1.2
2019/2/1 12:00	1.1	1.2
2019/2/8 12:00	1.1	1.2

[沈下量]

事業区域名 計測地点名	10丁目(道路部)				
	10E_1 沈下量 (cm)	10E_2 沈下量 (cm)	10E_3 沈下量 (cm)	10E_4 沈下量 (cm)	10D_1(ポンプ部) 沈下量 (cm)
2017/11/25 12:00	0.0	0.0	0.0	0.0	0.0
2017/12/25 12:00	0.1	0.1	0.1	0.1	0.1
2018/1/5 12:00	0.1	0.1	0.2	0.2	0.2
2018/1/12 12:00	0.1	0.1	0.2	0.2	0.2
2018/1/19 12:00	0.1	0.1	0.3	0.2	0.2
2018/1/26 12:00	0.1	0.2	0.3	0.2	0.2
2018/2/2 12:00	0.1	0.2	0.3	0.3	0.2
2018/2/9 12:00	0.2	0.2	0.3	0.3	0.3
2018/2/16 12:00	0.2	0.2	0.3	0.3	0.3
2018/2/23 12:00	0.2	0.3	0.4	0.3	0.3
2018/3/2 12:00	0.2	0.3	0.4	0.3	0.3
2018/3/9 12:00	0.2	0.3	0.4	0.3	0.3
2018/3/16 12:00	0.2	0.3	0.4	0.3	0.3
2018/3/23 12:00	0.2	0.4	0.4	0.3	0.3
2018/3/30 12:00	0.2	0.5	0.4	0.4	0.3
2018/4/6 12:00	0.2	0.5	0.4	0.3	0.3
2018/4/13 12:00	0.2	0.5	0.4	0.4	0.4
2018/4/20 12:00	0.2	0.6	0.4	0.4	0.4
2018/4/27 12:00	0.2	0.6	0.4	0.4	0.4
2018/5/4 12:00	0.2	0.6	0.4	0.4	0.4
2018/5/11 12:00	0.3	0.6	0.4	0.4	0.5
2018/5/18 12:00	0.3	0.6	0.4	0.4	0.4
2018/5/25 12:00	0.3	0.6	0.4	0.4	0.5
2018/6/1 12:00	0.3	0.6	0.5	0.5	0.5
2018/6/8 12:00	0.3	0.6	0.5	0.5	0.5
2018/6/15 12:00	0.3	0.7	0.5	0.5	0.5
2018/6/22 12:00	0.3	0.7	0.5	0.5	0.5
2018/6/29 12:00	0.4	0.7	0.6	0.6	0.6
2018/7/6 12:00	0.4	0.7	0.6	0.6	0.6
2018/7/13 12:00	0.4	0.8	0.6	0.7	0.6
2018/7/20 12:00	0.4	0.8	0.7	0.7	0.6
2018/7/27 12:00	0.5	0.8	0.7	0.7	0.7
2018/8/3 12:00	0.5	0.8	0.7	0.8	0.7
2018/8/10 12:00	0.5	0.8	0.8	0.8	0.7
2018/8/17 12:00	0.6	0.8	0.8	0.8	0.7
2018/8/24 12:00	0.6	0.9	0.9	0.9	0.8
2018/8/31 12:00	0.6	0.9	0.9	0.9	0.8
2018/9/7 12:00	0.7	0.9	0.9	0.9	0.8
2018/9/14 12:00	0.7	0.9	1.0	1.0	0.8
2018/9/21 12:00	0.7	0.9	0.9	1.0	0.8
2018/9/28 12:00	0.7	0.9	0.9	1.0	0.8
2018/10/5 12:00	0.7	0.9	1.0	1.0	0.9
2018/10/12 12:00	0.7	0.9	0.9	1.0	0.9
2018/10/19 12:00	0.7	0.9	1.0	1.0	0.9
2018/10/26 12:00	0.7	0.9	1.0	1.0	0.9
2018/11/2 12:00	0.7	1.0	1.0	1.1	0.9
2018/11/9 12:00	0.8	1.0	1.0	1.1	0.9
2018/11/16 12:00	0.8	1.0	1.1	1.1	0.9
2018/11/23 12:00	0.8	1.0	1.0	1.1	0.9
2018/11/30 12:00	0.8	1.0	1.1	1.1	0.9
2018/12/7 12:00	0.8	1.0	1.1	1.1	0.9
2018/12/14 12:00	0.8	1.0	1.1	1.2	1.0
2018/12/21 12:00	0.8	1.0	1.2	1.2	1.0
2018/12/28 12:00	0.8	1.0	1.1	1.2	1.0
2019/1/4 12:00	0.8	1.0	1.2	1.2	1.0
2019/1/11 12:00	0.8	1.0	1.2	1.2	1.0
2019/1/18 12:00	0.8	1.0	1.2	1.3	1.0
2019/1/25 12:00	0.8	1.1	1.2	1.3	1.0
2019/2/1 12:00	0.9	1.1	1.2	1.3	1.0
2019/2/8 12:00	0.9	1.1	1.3	1.3	1.1

[地下水位]

事業区域名	11丁目(民地部)			
計測地点名	11F_1		11F_2	
計測地点地盤高 (T.P.m)	8.36		9.22	
計測日	地下水位 (T.P.m)	地下水位 (GLm)	地下水位 (T.P.m)	地下水位 (GLm)
2017/11/25 12:00	7.41	-0.955	7.32	-1.896
2017/12/25 12:00	6.86	-1.499	6.64	-2.582
2018/1/5 12:00	6.79	-1.574	6.68	-2.544
2018/1/12 12:00	6.75	-1.607	6.68	-2.538
2018/1/19 12:00	6.79	-1.574	6.70	-2.522
2018/1/26 12:00	6.85	-1.510	6.76	-2.456
2018/2/2 12:00	6.85	-1.507	6.79	-2.428
2018/2/9 12:00	6.89	-1.475	6.83	-2.393
2018/2/16 12:00	6.93	-1.432	6.85	-2.371
2018/2/23 12:00	6.94	-1.421	6.86	-2.360
2018/3/2 12:00	7.02	-1.339	6.94	-2.283
2018/3/9 12:00	7.44	-0.919	7.36	-1.864
2018/3/16 12:00	7.41	-0.948	7.34	-1.879
2018/3/23 12:00	7.57	-0.786	7.54	-1.683
2018/3/30 12:00	7.28	-1.082	7.20	-2.022
2018/4/6 12:00	7.37	-0.987	7.27	-1.952
2018/4/13 12:00	7.26	-1.096	7.18	-2.042
2018/4/20 12:00	7.22	-1.137	7.12	-2.097
2018/4/27 12:00	7.23	-1.131	7.09	-2.132
2018/5/4 12:00	7.20	-1.160	7.06	-2.155
2018/5/11 12:00	7.19	-1.170	7.05	-2.168
2018/5/18 12:00	7.17	-1.185	7.03	-2.187
2018/5/25 12:00	7.28	-1.080	7.15	-2.066
2018/6/1 12:00	7.07	-1.291	6.90	-2.322
2018/6/8 12:00	7.08	-1.277	6.91	-2.313
2018/6/15 12:00	6.89	-1.469	6.60	-2.617
2018/6/22 12:00	6.84	-1.524	6.54	-2.684
2018/6/29 12:00	6.76	-1.597	6.52	-2.703
2018/7/6 12:00	6.74	-1.620	6.52	-2.696
2018/7/13 12:00	6.77	-1.586	6.52	-2.697
2018/7/20 12:00	6.74	-1.624	6.52	-2.703
2018/7/27 12:00	6.73	-1.628	6.50	-2.717
2018/8/3 12:00	6.67	-1.692	6.35	-2.868
2018/8/10 12:00	6.64	-1.721	6.33	-2.895
2018/8/17 12:00	6.58	-1.782	6.31	-2.913
2018/8/24 12:00	6.57	-1.794	6.31	-2.914
2018/8/31 12:00	6.55	-1.809	6.29	-2.931
2018/9/7 12:00	6.61	-1.749	6.32	-2.899
2018/9/14 12:00	6.60	-1.761	6.33	-2.895
2018/9/21 12:00	6.70	-1.657	6.38	-2.837
2018/9/28 12:00	6.77	-1.591	6.50	-2.719
2018/10/5 12:00	6.66	-1.703	6.39	-2.826
2018/10/12 12:00	6.63	-1.729	6.35	-2.872
2018/10/19 12:00	6.59	-1.773	6.33	-2.891
2018/10/26 12:00	6.55	-1.807	6.33	-2.887
2018/11/2 12:00	6.50	-1.855	6.32	-2.902
2018/11/9 12:00	6.57	-1.793	6.33	-2.888
2018/11/16 12:00	6.50	-1.856	6.32	-2.900
2018/11/23 12:00	6.50	-1.861	6.31	-2.910
2018/11/30 12:00	6.47	-1.894	6.31	-2.913
2018/12/7 12:00	6.46	-1.898	6.31	-2.915
2018/12/14 12:00	6.42	-1.944	6.29	-2.926
2018/12/21 12:00	6.36	-1.999	6.28	-2.941
2018/12/28 12:00	6.39	-1.974	6.27	-2.950
2019/1/4 12:00	6.33	-2.031	6.25	-2.967
2019/1/11 12:00	6.42	-1.944	6.25	-2.974
2019/1/18 12:00	6.42	-1.945	6.23	-2.987
2019/1/25 12:00	6.41	-1.950	6.23	-2.992
2019/2/1 12:00	6.41	-1.948	6.23	-2.990
2019/2/8 12:00	6.41	-1.953	6.21	-3.010
1段階目水位 2018/2/24まで	6.96	-1.40	6.96	-2.26
2段階目水位 2018/5/24まで	6.80	-1.57	6.80	-2.43
最終水位 2018/8/24まで	6.63	-1.73	6.63	-2.59

[地下水位]

事業区域名	11丁目(道路部)							
計測地点名	11E_1		11E_2		11E_3		11E_4	
計測地点地盤高 (T.P.m)	8.42		8.44		8.73		8.71	
計測日	地下水位 (T.P.m)	地下水位 (GLm)	地下水位 (T.P.m)	地下水位 (GLm)	地下水位 (T.P.m)	地下水位 (GLm)	地下水位 (T.P.m)	地下水位 (GLm)
2017/11/25 12:00	7.40	-1.017	7.39	-1.054	7.46	-1.273	7.36	-1.346
2017/12/25 12:00	6.71	-1.711	6.71	-1.733	6.76	-1.967	6.67	-2.036
2018/1/5 12:00	6.75	-1.670	6.75	-1.691	6.80	-1.925	6.71	-1.995
2018/1/12 12:00	6.76	-1.656	6.77	-1.674	6.82	-1.911	6.73	-1.981
2018/1/19 12:00	6.78	-1.636	6.79	-1.655	6.84	-1.892	6.75	-1.964
2018/1/26 12:00	6.85	-1.573	6.85	-1.589	6.90	-1.830	6.81	-1.903
2018/2/2 12:00	6.88	-1.535	6.89	-1.551	6.94	-1.793	6.84	-1.868
2018/2/9 12:00	6.92	-1.499	6.93	-1.514	6.98	-1.754	6.88	-1.830
2018/2/16 12:00	6.94	-1.480	6.94	-1.498	6.99	-1.738	6.90	-1.812
2018/2/23 12:00	6.95	-1.474	6.95	-1.490	7.00	-1.730	6.91	-1.803
2018/3/2 12:00	7.04	-1.383	7.05	-1.392	7.09	-1.641	7.00	-1.712
2018/3/9 12:00	7.38	-1.042	7.38	-1.056	7.43	-1.301	7.33	-1.378
2018/3/16 12:00	7.42	-1.005	7.42	-1.022	7.47	-1.260	7.38	-1.327
2018/3/23 12:00	7.59	-0.831	7.59	-0.846	7.65	-1.084	7.56	-1.151
2018/3/30 12:00	7.27	-1.150	7.27	-1.171	7.32	-1.409	7.24	-1.473
2018/4/6 12:00	7.33	-1.090	7.32	-1.115	7.38	-1.350	7.30	-1.412
2018/4/13 12:00	7.24	-1.179	7.23	-1.206	7.29	-1.439	7.21	-1.500
2018/4/20 12:00	7.19	-1.229	7.19	-1.251	7.24	-1.488	7.16	-1.547
2018/4/27 12:00	7.15	-1.268	7.15	-1.293	7.20	-1.534	7.13	-1.584
2018/5/4 12:00	7.13	-1.293	7.12	-1.317	7.17	-1.561	7.10	-1.607
2018/5/11 12:00	7.11	-1.314	7.11	-1.333	7.15	-1.583	7.09	-1.624
2018/5/18 12:00	7.07	-1.352	7.07	-1.370	7.11	-1.621	7.05	-1.662
2018/5/25 12:00	7.20	-1.216	7.20	-1.235	7.24	-1.491	7.19	-1.525
2018/6/1 12:00	6.93	-1.485	6.94	-1.500	6.97	-1.761	6.92	-1.791
2018/6/8 12:00	6.93	-1.490	6.94	-1.503	6.96	-1.768	6.92	-1.792
2018/6/15 12:00	6.55	-1.867	6.56	-1.875	6.59	-2.145	6.54	-2.171
2018/6/22 12:00	6.52	-1.896	6.54	-1.903	6.56	-2.175	6.51	-2.200
2018/6/29 12:00	6.54	-1.878	6.55	-1.888	6.57	-2.162	6.53	-2.182
2018/7/6 12:00	6.48	-1.944	6.51	-1.929	6.53	-2.201	6.50	-2.210
2018/7/13 12:00	6.47	-1.949	6.50	-1.936	6.52	-2.212	6.49	-2.221
2018/7/20 12:00	6.53	-1.891	6.54	-1.898	6.54	-2.189	6.53	-2.184
2018/7/27 12:00	6.51	-1.915	6.52	-1.923	6.51	-2.221	6.50	-2.206
2018/8/3 12:00	6.28	-2.142	6.31	-2.126	6.32	-2.410	6.30	-2.409
2018/8/10 12:00	6.27	-2.148	6.29	-2.150	6.28	-2.446	6.28	-2.425
2018/8/17 12:00	6.26	-2.156	6.27	-2.165	6.27	-2.457	6.28	-2.432
2018/8/24 12:00	6.26	-2.165	6.26	-2.178	6.26	-2.466	6.27	-2.440
2018/8/31 12:00	6.23	-2.185	6.24	-2.198	6.24	-2.490	6.25	-2.455
2018/9/7 12:00	6.27	-2.154	6.26	-2.178	6.26	-2.471	6.28	-2.433
2018/9/14 12:00	6.28	-2.143	6.27	-2.175	6.26	-2.466	6.28	-2.427
2018/9/21 12:00	6.32	-2.098	6.32	-2.123	6.31	-2.417	6.32	-2.388
2018/9/28 12:00	6.36	-2.062	6.35	-2.087	6.36	-2.373	6.36	-2.349
2018/10/5 12:00	6.33	-2.091	6.33	-2.115	6.32	-2.406	6.33	-2.378
2018/10/12 12:00	6.32	-2.100	6.30	-2.140	6.30	-2.433	6.32	-2.392
2018/10/19 12:00	6.30	-2.121	6.28	-2.156	6.28	-2.446	6.30	-2.408
2018/10/26 12:00	6.30	-2.121	6.27	-2.167	6.29	-2.444	6.30	-2.414
2018/11/2 12:00	6.30	-2.122	6.26	-2.179	6.29	-2.441	6.29	-2.421
2018/11/9 12:00	6.31	-2.105	6.26	-2.182	6.29	-2.444	6.29	-2.416
2018/11/16 12:00	6.30	-2.124	6.25	-2.189	6.29	-2.444	6.28	-2.427
2018/11/23 12:00	6.30	-2.122	6.25	-2.194	6.28	-2.449	6.28	-2.434
2018/11/30 12:00	6.29	-2.130	6.24	-2.201	6.28	-2.453	6.27	-2.443
2018/12/7 12:00	6.29	-2.133	6.24	-2.201	6.27	-2.455	6.26	-2.447
2018/12/14 12:00	6.30	-2.122	6.25	-2.186	6.27	-2.462	6.27	-2.438
2018/12/21 12:00	6.29	-2.134	6.24	-2.197	6.27	-2.457	6.26	-2.449
2018/12/28 12:00	6.28	-2.137	6.24	-2.200	6.27	-2.464	6.26	-2.454
2019/1/4 12:00	6.28	-2.142	6.24	-2.200	6.26	-2.470	6.25	-2.458
2019/1/11 12:00	6.27	-2.146	6.24	-2.201	6.25	-2.481	6.25	-2.464
2019/1/18 12:00	6.27	-2.151	6.24	-2.203	6.24	-2.488	6.24	-2.469
2019/1/25 12:00	6.26	-2.155	6.23	-2.207	6.23	-2.496	6.24	-2.475
2019/2/1 12:00	6.28	-2.138	6.25	-2.190	6.23	-2.496	6.24	-2.468
2019/2/8 12:00	6.26	-2.160	6.23	-2.211	6.22	-2.509	6.23	-2.482

[沈下量]

事業区域名 計測地点名	11丁目(民地部)	
	11F_1 沈下量 (cm)	11F_2 沈下量 (cm)
2017/11/25 12:00	0.0	0.0
2017/12/25 12:00	0.2	0.2
2018/1/5 12:00	0.3	0.3
2018/1/12 12:00	0.3	0.3
2018/1/19 12:00	0.3	0.3
2018/1/26 12:00	0.3	0.3
2018/2/2 12:00	0.4	0.3
2018/2/9 12:00	0.4	0.3
2018/2/16 12:00	0.4	0.3
2018/2/23 12:00	0.4	0.4
2018/3/2 12:00	0.4	0.3
2018/3/9 12:00	0.4	0.3
2018/3/16 12:00	0.4	0.3
2018/3/23 12:00	0.4	0.3
2018/3/30 12:00	0.4	0.3
2018/4/6 12:00	0.4	0.3
2018/4/13 12:00	0.4	0.3
2018/4/20 12:00	0.4	0.3
2018/4/27 12:00	0.4	0.3
2018/5/4 12:00	0.4	0.3
2018/5/11 12:00	0.4	0.4
2018/5/18 12:00	0.4	0.4
2018/5/25 12:00	0.4	0.4
2018/6/1 12:00	0.5	0.4
2018/6/8 12:00	0.5	0.4
2018/6/15 12:00	0.5	0.5
2018/6/22 12:00	0.5	0.5
2018/6/29 12:00	0.6	0.5
2018/7/6 12:00	0.6	0.6
2018/7/13 12:00	0.6	0.6
2018/7/20 12:00	0.7	0.6
2018/7/27 12:00	0.7	0.7
2018/8/3 12:00	0.7	0.7
2018/8/10 12:00	0.8	0.7
2018/8/17 12:00	0.8	0.8
2018/8/24 12:00	0.9	0.8
2018/8/31 12:00	0.9	0.8
2018/9/7 12:00	0.9	0.8
2018/9/14 12:00	0.9	0.9
2018/9/21 12:00	1.0	0.9
2018/9/28 12:00	1.0	0.9
2018/10/5 12:00	1.0	0.9
2018/10/12 12:00	1.0	0.9
2018/10/19 12:00	1.0	0.9
2018/10/26 12:00	1.0	1.0
2018/11/2 12:00	1.1	1.0
2018/11/9 12:00	1.1	1.0
2018/11/16 12:00	1.1	1.0
2018/11/23 12:00	1.1	1.0
2018/11/30 12:00	1.1	1.1
2018/12/7 12:00	1.2	1.1
2018/12/14 12:00	1.2	1.1
2018/12/21 12:00	1.2	1.1
2018/12/28 12:00	1.2	1.1
2019/1/4 12:00	1.3	1.2
2019/1/11 12:00	1.3	1.2
2019/1/18 12:00	1.3	1.2
2019/1/25 12:00	1.3	1.2
2019/2/1 12:00	1.3	1.3
2019/2/8 12:00	1.4	1.3

[沈下量]

事業区域名 計測地点名	11丁目(道路部)				
	11E_1 沈下量 (cm)	11E_2 沈下量 (cm)	11E_3 沈下量 (cm)	11E_4 沈下量 (cm)	11D_1(ポンプ部) 沈下量 (cm)
2017/11/25 12:00	0.0	0.0	0.0	0.0	0.0
2017/12/25 12:00	0.1	0.1	0.1	0.1	0.0
2018/1/5 12:00	0.2	0.1	0.1	0.1	0.1
2018/1/12 12:00	0.2	0.2	0.1	0.2	0.1
2018/1/19 12:00	0.2	0.2	0.2	0.2	0.1
2018/1/26 12:00	0.2	0.2	0.2	0.2	0.1
2018/2/2 12:00	0.2	0.3	0.2	0.2	0.1
2018/2/9 12:00	0.3	0.3	0.2	0.3	0.2
2018/2/16 12:00	0.3	0.3	0.2	0.3	0.2
2018/2/23 12:00	0.3	0.3	0.2	0.3	0.2
2018/3/2 12:00	0.3	0.3	0.2	0.3	0.2
2018/3/9 12:00	0.3	0.4	0.2	0.3	0.2
2018/3/16 12:00	0.3	0.3	0.2	0.3	0.2
2018/3/23 12:00	0.3	0.3	0.2	0.3	0.2
2018/3/30 12:00	0.3	0.3	0.2	0.3	0.3
2018/4/6 12:00	0.3	0.3	0.2	0.3	0.2
2018/4/13 12:00	0.3	0.3	0.2	0.3	0.3
2018/4/20 12:00	0.3	0.3	0.2	0.3	0.3
2018/4/27 12:00	0.3	0.3	0.2	0.3	0.3
2018/5/4 12:00	0.3	0.3	0.2	0.3	0.3
2018/5/11 12:00	0.3	0.4	0.2	0.3	0.3
2018/5/18 12:00	0.3	0.4	0.2	0.3	0.3
2018/5/25 12:00	0.3	0.4	0.2	0.4	0.3
2018/6/1 12:00	0.3	0.4	0.3	0.4	0.3
2018/6/8 12:00	0.3	0.4	0.3	0.4	0.4
2018/6/15 12:00	0.4	0.4	0.3	0.4	0.4
2018/6/22 12:00	0.4	0.5	0.3	0.5	0.4
2018/6/29 12:00	0.4	0.5	0.3	0.5	0.4
2018/7/6 12:00	0.4	0.5	0.3	0.6	0.4
2018/7/13 12:00	0.5	0.6	0.3	0.6	0.4
2018/7/20 12:00	0.5	0.6	0.4	0.6	0.4
2018/7/27 12:00	0.5	0.6	0.4	0.6	0.5
2018/8/3 12:00	0.5	0.7	0.4	0.7	0.5
2018/8/10 12:00	0.5	0.7	0.4	0.7	0.5
2018/8/17 12:00	0.6	0.8	0.5	0.7	0.5
2018/8/24 12:00	0.6	0.8	0.5	0.8	0.6
2018/8/31 12:00	0.6	0.8	0.5	0.8	0.6
2018/9/7 12:00	0.6	0.9	0.5	0.8	0.6
2018/9/14 12:00	0.7	0.9	0.6	0.8	0.7
2018/9/21 12:00	0.7	0.9	0.6	0.8	0.7
2018/9/28 12:00	0.7	0.9	0.6	0.8	0.7
2018/10/5 12:00	0.7	1.0	0.6	0.8	0.7
2018/10/12 12:00	0.7	1.0	0.6	0.8	0.7
2018/10/19 12:00	0.7	1.0	0.6	0.8	0.7
2018/10/26 12:00	0.7	1.0	0.6	0.9	0.7
2018/11/2 12:00	0.7	1.0	0.6	0.9	0.7
2018/11/9 12:00	0.8	1.0	0.6	0.9	0.7
2018/11/16 12:00	0.8	1.0	0.6	0.9	0.7
2018/11/23 12:00	0.8	1.0	0.6	0.9	0.7
2018/11/30 12:00	0.8	1.0	0.7	0.9	0.8
2018/12/7 12:00	0.8	1.1	0.6	0.9	0.8
2018/12/14 12:00	0.8	1.1	0.7	0.9	0.8
2018/12/21 12:00	0.9	1.1	0.7	1.0	0.8
2018/12/28 12:00	0.9	1.1	0.7	0.9	0.8
2019/1/4 12:00	0.9	1.1	0.7	1.0	0.8
2019/1/11 12:00	0.9	1.1	0.7	1.0	0.8
2019/1/18 12:00	0.9	1.2	0.7	1.0	0.8
2019/1/25 12:00	0.9	1.2	0.7	1.0	0.8
2019/2/1 12:00	0.9	1.2	0.8	1.0	0.8
2019/2/8 12:00	1.0	1.2	0.8	1.1	0.9

[地下水位]

事業区域名	7・12丁目(民地部)		12丁目(民地部)			
計測地点名	12F_1		12F_2		12F_3	
計測地点地盤高 (T.P.m)	8.96		8.78		9.04	
計測日	地下水位 (T.P.m)	地下水位 (GLm)	地下水位 (T.P.m)	地下水位 (GLm)	地下水位 (T.P.m)	地下水位 (GLm)
2017/11/25 12:00	7.30	-1.664	7.25	-1.531	7.16	-1.878
2017/12/25 12:00	6.75	-2.208	6.23	-2.546	6.18	-2.858
2018/1/5 12:00	6.73	-2.233	6.27	-2.508	6.24	-2.800
2018/1/12 12:00	6.71	-2.248	6.31	-2.467	6.27	-2.773
2018/1/19 12:00	6.70	-2.258	6.31	-2.469	6.29	-2.754
2018/1/26 12:00	6.73	-2.231	6.35	-2.430	6.32	-2.716
2018/2/2 12:00	6.72	-2.240	6.38	-2.402	6.35	-2.685
2018/2/9 12:00	6.72	-2.236	6.42	-2.362	6.39	-2.646
2018/2/16 12:00	6.73	-2.232	6.46	-2.318	6.42	-2.621
2018/2/23 12:00	6.69	-2.270	6.46	-2.322	6.44	-2.603
2018/3/2 12:00	6.70	-2.259	6.48	-2.299	6.47	-2.570
2018/3/9 12:00	8.77	-0.187	8.49	-0.288	6.54	-2.503
2018/3/16 12:00	7.19	-1.772	6.76	-2.024	6.76	-2.283
2018/3/23 12:00	8.57	-0.386	7.15	-1.634	6.86	-2.176
2018/3/30 12:00	7.18	-1.779	6.82	-1.964	6.79	-2.251
2018/4/6 12:00	7.19	-1.770	6.91	-1.874	6.89	-2.154
2018/4/13 12:00	7.13	-1.834	6.76	-2.019	6.76	-2.279
2018/4/20 12:00	7.14	-1.817	6.69	-2.093	6.68	-2.363
2018/4/27 12:00	7.26	-1.697	6.70	-2.082	6.68	-2.357
2018/5/4 12:00	7.20	-1.763	6.68	-2.096	6.67	-2.365
2018/5/11 12:00	7.30	-1.655	6.70	-2.083	6.69	-2.352
2018/5/18 12:00	7.30	-1.665	6.70	-2.077	6.69	-2.349
2018/5/25 12:00	7.16	-1.799	6.69	-2.089	6.68	-2.363
2018/6/1 12:00	6.90	-2.057	6.29	-2.495	6.29	-2.752
2018/6/8 12:00	6.96	-1.997	6.31	-2.467	6.30	-2.745
2018/6/15 12:00	6.79	-2.166	6.22	-2.562	6.21	-2.834
2018/6/22 12:00	6.81	-2.154	6.18	-2.596	6.14	-2.901
2018/6/29 12:00	6.79	-2.173	6.15	-2.635	6.13	-2.913
2018/7/6 12:00	6.79	-2.175	6.14	-2.642	6.12	-2.918
2018/7/13 12:00	6.80	-2.157	6.15	-2.630	6.12	-2.921
2018/7/20 12:00	6.82	-2.142	6.17	-2.610	6.12	-2.925
2018/7/27 12:00	6.83	-2.129	6.13	-2.652	6.12	-2.924
2018/8/3 12:00	6.64	-2.323	5.87	-2.914	5.92	-3.120
2018/8/10 12:00	6.62	-2.344	5.79	-2.994	5.92	-3.118
2018/8/17 12:00	6.59	-2.366	5.75	-3.030	5.92	-3.116
2018/8/24 12:00	6.59	-2.369	5.72	-3.057	5.93	-3.110
2018/8/31 12:00	6.60	-2.361	5.71	-3.072	5.93	-3.115
2018/9/7 12:00	6.62	-2.343	5.73	-3.051	5.92	-3.119
2018/9/14 12:00	6.60	-2.357	5.70	-3.085	5.92	-3.116
2018/9/21 12:00	7.81	-1.147	5.87	-2.911	5.93	-3.112
2018/9/28 12:00	7.33	-1.634	5.82	-2.955	5.95	-3.091
2018/10/5 12:00	6.61	-2.346	5.81	-2.973	5.93	-3.109
2018/10/12 12:00	6.64	-2.320	5.74	-3.038	5.93	-3.110
2018/10/19 12:00	6.62	-2.336	5.71	-3.072	5.93	-3.108
2018/10/26 12:00	6.61	-2.351	5.69	-3.087	5.93	-3.110
2018/11/2 12:00	6.60	-2.357	5.69	-3.093	5.93	-3.115
2018/11/9 12:00	6.62	-2.340	5.69	-3.094	5.93	-3.105
2018/11/16 12:00	6.60	-2.357	5.69	-3.088	5.94	-3.099
2018/11/23 12:00	6.60	-2.360	5.70	-3.082	5.94	-3.101
2018/11/30 12:00	6.58	-2.380	5.71	-3.075	5.94	-3.099
2018/12/7 12:00	6.59	-2.373	5.70	-3.082	5.95	-3.092
2018/12/14 12:00	6.56	-2.398	5.70	-3.082	5.94	-3.100
2018/12/21 12:00	6.53	-2.429	5.69	-3.088	5.93	-3.105
2018/12/28 12:00	6.54	-2.420	5.69	-3.086	5.95	-3.090
2019/1/4 12:00	6.49	-2.474	5.67	-3.107	5.93	-3.112
2019/1/11 12:00	6.52	-2.444	5.67	-3.105	5.94	-3.098
2019/1/18 12:00	6.68	-2.276	5.66	-3.123	5.93	-3.106
2019/1/25 12:00	6.58	-2.385	5.64	-3.136	5.91	-3.126
2019/2/1 12:00	6.56	-2.401	5.64	-3.141	5.93	-3.113
2019/2/8 12:00	15.23	6.266	5.63	-3.150	5.91	-3.125
1段階目水位 2018/2/24まで	7.07	-1.890	6.20	-2.580	6.20	-2.840
2段階目水位 2018/5/24まで	6.86	-2.100	6.12	-2.660	6.12	-2.920
最終水位 2018/8/24まで	6.65	-2.320	6.04	-2.740	6.04	-3.000

[地下水位]

事業区域名	7・12丁目(道路部)									
計測地点名	12E_1		12E_2		12E_3		12E_4		12E_5	
計測地点地盤高 (T.P.m)	8.66		8.55		8.50		8.35		8.41	
計測日	地下水位 (T.P.m)	地下水位 (GLm)	地下水位 (T.P.m)	地下水位 (GLm)	地下水位 (T.P.m)	地下水位 (GLm)	地下水位 (T.P.m)	地下水位 (GLm)	地下水位 (T.P.m)	地下水位 (GLm)
2017/11/25 12:00	7.26	-1.399	7.29	-1.263	7.13	-1.373	7.19	-1.156	7.20	-1.212
2017/12/25 12:00	6.69	-1.971	6.71	-1.836	6.16	-2.345	6.23	-2.118	6.21	-2.198
2018/1/5 12:00	6.70	-1.964	6.72	-1.828	6.21	-2.295	6.28	-2.069	6.26	-2.149
2018/1/12 12:00	6.69	-1.973	6.72	-1.835	6.23	-2.270	6.31	-2.045	6.28	-2.127
2018/1/19 12:00	6.66	-1.998	6.69	-1.861	6.25	-2.250	6.33	-2.023	6.31	-2.104
2018/1/26 12:00	6.72	-1.944	6.74	-1.809	6.30	-2.204	6.37	-1.976	6.35	-2.058
2018/2/2 12:00	6.72	-1.942	6.75	-1.800	6.33	-2.173	6.41	-1.944	6.38	-2.026
2018/2/9 12:00	6.72	-1.937	6.75	-1.798	6.36	-2.137	6.44	-1.910	6.42	-1.991
2018/2/16 12:00	6.70	-1.965	6.73	-1.823	6.38	-2.115	6.46	-1.887	6.44	-1.968
2018/2/23 12:00	6.65	-2.011	6.68	-1.868	6.40	-2.099	6.48	-1.870	6.46	-1.951
2018/3/2 12:00	6.73	-1.934	6.76	-1.791	6.45	-2.054	6.52	-1.825	6.50	-1.906
2018/3/9 12:00	7.08	-1.577	7.11	-1.438	6.57	-1.934	6.65	-1.704	6.63	-1.785
2018/3/16 12:00	7.21	-1.447	7.25	-1.302	6.70	-1.795	6.78	-1.568	6.76	-1.647
2018/3/23 12:00	7.38	-1.278	7.42	-1.134	6.84	-1.656	6.92	-1.427	6.90	-1.510
2018/3/30 12:00	7.21	-1.453	7.24	-1.309	6.73	-1.773	6.80	-1.549	6.78	-1.629
2018/4/6 12:00	7.19	-1.468	7.23	-1.324	6.84	-1.658	6.91	-1.436	6.89	-1.516
2018/4/13 12:00	7.15	-1.513	7.18	-1.368	6.62	-1.880	6.70	-1.652	6.68	-1.730
2018/4/20 12:00	7.16	-1.504	7.19	-1.358	6.62	-1.881	6.69	-1.663	6.67	-1.740
2018/4/27 12:00	7.25	-1.410	7.29	-1.264	6.61	-1.891	6.68	-1.667	6.67	-1.741
2018/5/4 12:00	7.20	-1.464	7.23	-1.315	6.61	-1.895	6.68	-1.671	6.67	-1.745
2018/5/11 12:00	7.28	-1.382	7.32	-1.231	6.62	-1.883	6.68	-1.669	6.67	-1.739
2018/5/18 12:00	7.26	-1.401	7.30	-1.251	6.62	-1.880	6.68	-1.671	6.67	-1.738
2018/5/25 12:00	7.14	-1.524	7.18	-1.372	6.60	-1.898	6.66	-1.689	6.66	-1.754
2018/6/1 12:00	6.86	-1.803	6.90	-1.650	6.16	-2.344	6.21	-2.139	6.21	-2.199
2018/6/8 12:00	6.90	-1.758	6.95	-1.603	6.19	-2.307	6.25	-2.104	6.25	-2.162
2018/6/15 12:00	6.71	-1.948	6.75	-1.795	6.05	-2.454	6.10	-2.250	6.11	-2.302
2018/6/22 12:00	6.70	-1.962	6.74	-1.806	6.04	-2.462	6.09	-2.263	6.10	-2.312
2018/6/29 12:00	6.70	-1.956	6.75	-1.797	6.03	-2.469	6.08	-2.267	6.10	-2.313
2018/7/6 12:00	6.70	-1.958	6.75	-1.799	6.04	-2.464	6.08	-2.266	6.10	-2.308
2018/7/13 12:00	6.69	-1.966	6.74	-1.807	6.01	-2.492	6.08	-2.272	6.10	-2.308
2018/7/20 12:00	6.68	-1.979	6.73	-1.818	6.01	-2.490	6.07	-2.277	6.10	-2.308
2018/7/27 12:00	6.68	-1.983	6.73	-1.822	6.04	-2.461	6.07	-2.285	6.10	-2.313
2018/8/3 12:00	6.34	-2.315	6.39	-2.157	5.53	-2.968	5.64	-2.709	5.68	-2.728
2018/8/10 12:00	6.33	-2.330	6.38	-2.173	5.56	-2.944	5.65	-2.701	5.69	-2.718
2018/8/17 12:00	6.32	-2.343	6.37	-2.180	5.56	-2.943	5.63	-2.720	5.68	-2.731
2018/8/24 12:00	6.31	-2.352	6.36	-2.185	5.55	-2.954	5.58	-2.773	5.63	-2.776
2018/8/31 12:00	6.30	-2.356	6.36	-2.188	5.54	-2.957	5.57	-2.781	5.63	-2.782
2018/9/7 12:00	6.31	-2.345	6.37	-2.181	5.57	-2.932	5.57	-2.778	5.63	-2.775
2018/9/14 12:00	6.31	-2.347	6.37	-2.180	5.58	-2.922	5.57	-2.784	5.63	-2.778
2018/9/21 12:00	6.36	-2.295	6.43	-2.124	5.59	-2.912	5.59	-2.760	5.66	-2.754
2018/9/28 12:00	6.36	-2.295	6.43	-2.124	5.59	-2.915	5.62	-2.731	5.68	-2.727
2018/10/5 12:00	6.36	-2.302	6.42	-2.128	5.57	-2.934	5.62	-2.729	5.68	-2.726
2018/10/12 12:00	6.33	-2.325	6.40	-2.149	5.57	-2.930	5.58	-2.768	5.65	-2.764
2018/10/19 12:00	6.31	-2.349	6.38	-2.171	5.57	-2.928	5.58	-2.774	5.64	-2.770
2018/10/26 12:00	6.31	-2.355	6.38	-2.174	5.59	-2.914	5.59	-2.764	5.65	-2.760
2018/11/2 12:00	6.31	-2.348	6.38	-2.166	5.60	-2.903	5.60	-2.749	5.66	-2.745
2018/11/9 12:00	6.31	-2.352	6.38	-2.170	5.59	-2.906	5.59	-2.760	5.65	-2.756
2018/11/16 12:00	6.31	-2.352	6.38	-2.167	5.60	-2.904	5.60	-2.753	5.66	-2.748
2018/11/23 12:00	6.31	-2.348	6.39	-2.162	5.60	-2.904	5.61	-2.740	5.68	-2.735
2018/11/30 12:00	6.31	-2.350	6.39	-2.163	5.60	-2.900	5.61	-2.741	5.67	-2.737
2018/12/7 12:00	6.31	-2.348	6.39	-2.162	5.60	-2.902	5.61	-2.738	5.68	-2.735
2018/12/14 12:00	6.32	-2.341	6.40	-2.153	5.60	-2.896	5.62	-2.726	5.68	-2.725
2018/12/21 12:00	6.33	-2.334	6.40	-2.148	5.60	-2.899	5.62	-2.725	5.68	-2.727
2018/12/28 12:00	6.32	-2.336	6.41	-2.145	5.61	-2.895	5.62	-2.728	5.68	-2.729
2019/1/4 12:00	6.32	-2.340	6.40	-2.149	5.60	-2.900	5.62	-2.733	5.67	-2.736
2019/1/11 12:00	6.34	-2.320	6.42	-2.133	5.60	-2.901	5.62	-2.734	5.67	-2.739
2019/1/18 12:00	6.36	-2.299	6.44	-2.110	5.60	-2.902	5.61	-2.738	5.67	-2.741
2019/1/25 12:00	6.36	-2.297	6.44	-2.109	5.60	-2.902	5.61	-2.739	5.67	-2.743
2019/2/1 12:00	6.38	-2.283	6.46	-2.094	5.60	-2.901	5.61	-2.739	5.67	-2.740
2019/2/8 12:00	6.37	-2.290	6.45	-2.099	5.60	-2.900	5.61	-2.743	5.67	-2.742

[地下水位]

事業区域名	12丁目(道路部)									
計測地点名	12E_6		12E_7		12E_8		12E_9		12E_10	
計測地点地盤高 (T.P.m)	8.50		8.58		8.72		8.65		8.51	
計測日	地下水位 (T.P.m)	地下水位 (GLm)	地下水位 (T.P.m)	地下水位 (GLm)	地下水位 (T.P.m)	地下水位 (GLm)	地下水位 (T.P.m)	地下水位 (GLm)	地下水位 (T.P.m)	地下水位 (GLm)
2017/11/25 12:00	7.20	-1.303	7.22	-1.357	7.14	-1.584	7.16	-1.493	7.20	-1.310
2017/12/25 12:00	6.25	-2.255	6.26	-2.315	6.17	-2.551	6.19	-2.464	6.24	-2.273
2018/1/5 12:00	6.30	-2.200	6.31	-2.265	6.22	-2.501	6.24	-2.413	6.29	-2.222
2018/1/12 12:00	6.32	-2.176	6.34	-2.240	6.24	-2.477	6.26	-2.390	6.31	-2.197
2018/1/19 12:00	6.35	-2.152	6.36	-2.217	6.27	-2.455	6.28	-2.368	6.33	-2.177
2018/1/26 12:00	6.40	-2.098	6.41	-2.170	6.31	-2.411	6.33	-2.322	6.38	-2.132
2018/2/2 12:00	6.44	-2.063	6.44	-2.139	6.34	-2.381	6.36	-2.291	6.41	-2.101
2018/2/9 12:00	6.48	-2.023	6.48	-2.104	6.37	-2.347	6.39	-2.259	6.44	-2.067
2018/2/16 12:00	6.50	-1.999	6.50	-2.080	6.40	-2.324	6.41	-2.238	6.47	-2.044
2018/2/23 12:00	6.52	-1.981	6.52	-2.063	6.41	-2.308	6.43	-2.220	6.48	-2.028
2018/3/2 12:00	6.57	-1.935	6.56	-2.015	6.46	-2.263	6.47	-2.180	6.53	-1.983
2018/3/9 12:00	6.68	-1.815	6.68	-1.896	6.57	-2.146	6.59	-2.062	6.64	-1.865
2018/3/16 12:00	6.82	-1.677	6.82	-1.758	6.71	-2.008	6.73	-1.922	6.78	-1.725
2018/3/23 12:00	6.96	-1.540	6.96	-1.618	6.85	-1.869	6.87	-1.784	6.92	-1.587
2018/3/30 12:00	6.84	-1.659	6.84	-1.738	6.73	-1.988	6.75	-1.904	6.80	-1.706
2018/4/6 12:00	6.95	-1.547	6.96	-1.622	6.85	-1.873	6.86	-1.789	6.92	-1.592
2018/4/13 12:00	6.74	-1.764	6.74	-1.836	6.63	-2.090	6.65	-2.003	6.70	-1.805
2018/4/20 12:00	6.72	-1.778	6.73	-1.847	6.62	-2.097	6.64	-2.012	6.70	-1.814
2018/4/27 12:00	6.72	-1.783	6.73	-1.850	6.62	-2.100	6.63	-2.015	6.69	-1.818
2018/5/4 12:00	6.71	-1.789	6.73	-1.852	6.61	-2.105	6.63	-2.019	6.69	-1.822
2018/5/11 12:00	6.71	-1.790	6.73	-1.848	6.62	-2.100	6.64	-2.013	6.69	-1.817
2018/5/18 12:00	6.71	-1.794	6.73	-1.847	6.62	-2.100	6.64	-2.014	6.69	-1.820
2018/5/25 12:00	6.69	-1.813	6.72	-1.863	6.60	-2.118	6.62	-2.032	6.67	-1.836
2018/6/1 12:00	6.24	-2.264	6.27	-2.307	6.16	-2.564	6.17	-2.478	6.23	-2.282
2018/6/8 12:00	6.27	-2.232	6.31	-2.269	6.19	-2.528	6.21	-2.441	6.26	-2.247
2018/6/15 12:00	6.12	-2.378	6.17	-2.410	6.05	-2.672	6.07	-2.584	6.12	-2.387
2018/6/22 12:00	6.11	-2.392	6.16	-2.420	6.04	-2.681	6.06	-2.595	6.11	-2.397
2018/6/29 12:00	6.10	-2.395	6.16	-2.421	6.04	-2.683	6.05	-2.598	6.11	-2.401
2018/7/6 12:00	6.10	-2.395	6.16	-2.415	6.04	-2.681	6.06	-2.595	6.12	-2.394
2018/7/13 12:00	6.10	-2.402	6.16	-2.415	6.03	-2.685	6.05	-2.597	6.11	-2.397
2018/7/20 12:00	6.09	-2.409	6.17	-2.415	6.03	-2.688	6.05	-2.599	6.12	-2.395
2018/7/27 12:00	6.08	-2.419	6.16	-2.418	6.03	-2.695	6.05	-2.604	6.11	-2.396
2018/8/3 12:00	5.65	-2.845	5.74	-2.837	5.61	-3.108	5.63	-3.025	5.70	-2.814
2018/8/10 12:00	5.66	-2.837	5.75	-2.825	5.63	-3.090	5.64	-3.015	5.71	-2.797
2018/8/17 12:00	5.64	-2.859	5.74	-2.837	5.61	-3.108	5.62	-3.032	5.70	-2.805
2018/8/24 12:00	5.59	-2.910	5.70	-2.884	5.57	-3.150	5.57	-3.082	5.66	-2.851
2018/8/31 12:00	5.58	-2.921	5.69	-2.890	5.56	-3.156	5.56	-3.091	5.66	-2.848
2018/9/7 12:00	5.58	-2.919	5.69	-2.889	5.57	-3.152	5.56	-3.090	5.68	-2.832
2018/9/14 12:00	5.58	-2.923	5.69	-2.891	5.56	-3.159	5.56	-3.094	5.68	-2.825
2018/9/21 12:00	5.60	-2.897	5.71	-2.865	5.58	-3.139	5.58	-3.070	5.71	-2.795
2018/9/28 12:00	5.63	-2.868	5.74	-2.839	5.60	-3.118	5.61	-3.041	5.74	-2.766
2018/10/5 12:00	5.63	-2.866	5.75	-2.834	5.60	-3.120	5.61	-3.040	5.75	-2.760
2018/10/12 12:00	5.60	-2.903	5.71	-2.872	5.56	-3.160	5.57	-3.078	5.72	-2.791
2018/10/19 12:00	5.59	-2.906	5.70	-2.876	5.56	-3.164	5.56	-3.085	5.71	-2.795
2018/10/26 12:00	5.61	-2.894	5.72	-2.864	5.56	-3.159	5.58	-3.073	5.73	-2.782
2018/11/2 12:00	5.62	-2.876	5.73	-2.849	5.57	-3.147	5.59	-3.059	5.75	-2.763
2018/11/9 12:00	5.61	-2.886	5.72	-2.857	5.56	-3.159	5.56	-3.085	5.74	-2.772
2018/11/16 12:00	5.62	-2.877	5.73	-2.849	5.56	-3.160	5.59	-3.063	5.75	-2.761
2018/11/23 12:00	5.64	-2.861	5.74	-2.836	5.58	-3.142	5.60	-3.051	5.76	-2.747
2018/11/30 12:00	5.64	-2.860	5.74	-2.838	5.58	-3.144	5.60	-3.055	5.76	-2.749
2018/12/7 12:00	5.64	-2.857	5.74	-2.837	5.58	-3.142	5.60	-3.054	5.76	-2.746
2018/12/14 12:00	5.66	-2.839	5.76	-2.824	5.59	-3.130	5.61	-3.044	5.77	-2.735
2018/12/21 12:00	5.67	-2.834	5.75	-2.826	5.59	-3.130	5.61	-3.044	5.77	-2.735
2018/12/28 12:00	5.66	-2.835	5.75	-2.828	5.59	-3.131	5.59	-3.057	5.77	-2.739
2019/1/4 12:00	5.66	-2.836	5.75	-2.835	5.58	-3.135	5.59	-3.056	5.77	-2.744
2019/1/11 12:00	5.67	-2.834	5.74	-2.837	5.58	-3.145	5.59	-3.060	5.76	-2.748
2019/1/18 12:00	5.66	-2.835	5.74	-2.840	5.56	-3.155	5.59	-3.061	5.76	-2.752
2019/1/25 12:00	5.67	-2.833	5.74	-2.842	5.57	-3.152	5.59	-3.064	5.76	-2.752
2019/2/1 12:00	5.67	-2.831	5.74	-2.840	5.56	-3.156	5.59	-3.063	5.76	-2.753
2019/2/8 12:00	5.67	-2.832	5.74	-2.841	5.56	-3.156	5.58	-3.067	5.76	-2.754

[沈下量]

事業区域名 計測地点名	7・12丁目(民地部)		12丁目(民地部)	
	12F_1 沈下量 (cm)	12F_2 沈下量 (cm)	12F_3 沈下量 (cm)	
計測日				
2017/11/25 12:00	0.0	0.0	0.0	0.0
2017/12/25 12:00	0.1	0.2	0.1	0.1
2018/1/5 12:00	0.2	0.3	0.1	0.1
2018/1/12 12:00	0.2	0.3	0.1	0.1
2018/1/19 12:00	0.3	0.4	0.2	0.2
2018/1/26 12:00	0.3	0.4	0.2	0.2
2018/2/2 12:00	0.3	0.4	0.2	0.2
2018/2/9 12:00	0.3	0.4	0.2	0.2
2018/2/16 12:00	0.4	0.4	0.2	0.2
2018/2/23 12:00	0.4	0.5	0.3	0.3
2018/3/2 12:00	0.4	0.5	0.3	0.3
2018/3/9 12:00	0.4	0.5	0.3	0.3
2018/3/16 12:00	0.4	0.5	0.3	0.3
2018/3/23 12:00	0.4	0.5	0.3	0.3
2018/3/30 12:00	0.4	0.5	0.3	0.3
2018/4/6 12:00	0.4	0.5	0.3	0.3
2018/4/13 12:00	0.4	0.5	0.3	0.3
2018/4/20 12:00	0.4	0.5	0.3	0.3
2018/4/27 12:00	0.4	0.5	0.2	0.2
2018/5/4 12:00	0.4	0.5	0.2	0.2
2018/5/11 12:00	0.4	0.5	0.2	0.2
2018/5/18 12:00	0.4	0.5	0.2	0.2
2018/5/25 12:00	0.4	0.5	0.2	0.2
2018/6/1 12:00	0.5	0.5	0.2	0.2
2018/6/8 12:00	0.5	0.5	0.2	0.2
2018/6/15 12:00	0.5	0.6	0.2	0.2
2018/6/22 12:00	0.5	0.6	0.2	0.2
2018/6/29 12:00	0.6	0.6	0.2	0.2
2018/7/6 12:00	0.6	0.6	0.2	0.2
2018/7/13 12:00	0.6	0.6	0.2	0.2
2018/7/20 12:00	0.6	0.6	0.2	0.2
2018/7/27 12:00	0.7	0.7	0.2	0.2
2018/8/3 12:00	0.7	0.7	0.2	0.2
2018/8/10 12:00	0.7	0.7	0.2	0.2
2018/8/17 12:00	0.8	0.7	0.2	0.2
2018/8/24 12:00	0.8	0.7	0.3	0.3
2018/8/31 12:00	0.9	0.8	0.3	0.3
2018/9/7 12:00	0.9	0.8	0.3	0.3
2018/9/14 12:00	0.9	0.9	0.4	0.4
2018/9/21 12:00	0.9	0.9	0.4	0.4
2018/9/28 12:00	0.9	0.9	0.4	0.4
2018/10/5 12:00	0.9	0.9	0.4	0.4
2018/10/12 12:00	0.9	0.9	0.4	0.4
2018/10/19 12:00	0.9	0.9	0.4	0.4
2018/10/26 12:00	1.0	1.0	0.4	0.4
2018/11/2 12:00	1.0	1.0	0.4	0.4
2018/11/9 12:00	1.0	1.0	0.5	0.5
2018/11/16 12:00	1.0	1.0	0.5	0.5
2018/11/23 12:00	1.0	1.1	0.5	0.5
2018/11/30 12:00	1.0	1.1	0.5	0.5
2018/12/7 12:00	1.1	1.1	0.5	0.5
2018/12/14 12:00	1.1	1.2	0.6	0.6
2018/12/21 12:00	1.1	1.2	0.6	0.6
2018/12/28 12:00	1.1	1.2	0.6	0.6
2019/1/4 12:00	1.2	1.2	0.6	0.6
2019/1/11 12:00	1.2	1.2	0.6	0.6
2019/1/18 12:00	1.2	1.3	0.6	0.6
2019/1/25 12:00	1.2	1.3	0.7	0.7
2019/2/1 12:00	1.2	1.4	0.7	0.7
2019/2/8 12:00	1.3	1.4	0.7	0.7

[沈下量]

事業区域名 計測地点名	7・12丁目(道路部)				12丁目(道路部)					
	12E_1 沈下量 (cm)	12E_2 沈下量 (cm)	12E_3 沈下量 (cm)	12E_4 沈下量 (cm)	12E_5 沈下量 (cm)	12E_6 沈下量 (cm)	12E_7 沈下量 (cm)	12E_8 沈下量 (cm)	12E_9 沈下量 (cm)	12E_10 沈下量 (cm)
2017/11/25 12:00	0.0	0.0	0.0	0.0	0.0	0.0	0.0	0.0	0.0	0.0
2017/12/25 12:00	0.1	0.1	0.1	0.2	0.2	0.2	0.3	0.1	0.2	0.2
2018/1/5 12:00	0.2	0.2	0.2	0.2	0.3	0.3	0.3	0.1	0.2	0.3
2018/1/12 12:00	0.2	0.2	0.2	0.3	0.3	0.3	0.4	0.1	0.3	0.3
2018/1/19 12:00	0.2	0.2	0.3	0.3	0.3	0.4	0.4	0.2	0.3	0.4
2018/1/26 12:00	0.2	0.2	0.3	0.3	0.4	0.4	0.4	0.2	0.3	0.4
2018/2/2 12:00	0.3	0.3	0.3	0.4	0.4	0.5	0.5	0.2	0.3	0.5
2018/2/9 12:00	0.3	0.3	0.3	0.4	0.4	0.5	0.5	0.2	0.4	0.5
2018/2/16 12:00	0.3	0.3	0.3	0.4	0.4	0.5	0.5	0.2	0.4	0.5
2018/2/23 12:00	0.3	0.3	0.4	0.4	0.4	0.6	0.5	0.2	0.4	0.5
2018/3/2 12:00	0.3	0.3	0.4	0.4	0.5	0.6	0.5	0.2	0.4	0.5
2018/3/9 12:00	0.4	0.4	0.4	0.4	0.5	0.6	0.5	0.3	0.4	0.5
2018/3/16 12:00	0.4	0.4	0.7	0.4	0.5	0.6	0.5	0.3	0.3	0.4
2018/3/23 12:00	0.3	0.3	0.7	0.4	0.5	0.6	0.5	0.3	0.3	0.4
2018/3/30 12:00	0.3	0.4	0.7	0.4	0.5	0.6	0.5	0.3	0.3	0.4
2018/4/6 12:00	0.3	0.3	0.7	0.4	0.5	0.6	0.5	0.2	0.3	0.4
2018/4/13 12:00	0.4	0.4	0.7	0.4	0.5	0.6	0.5	0.3	0.4	0.5
2018/4/20 12:00	0.4	0.4	0.7	0.4	0.5	0.6	0.5	0.3	0.4	0.5
2018/4/27 12:00	0.4	0.4	0.7	0.5	0.5	0.6	0.5	0.3	0.4	0.4
2018/5/4 12:00	0.4	0.4	0.7	0.5	0.5	0.7	0.5	0.3	0.4	0.4
2018/5/11 12:00	0.4	0.4	0.8	0.5	0.5	0.7	0.5	0.3	0.3	0.4
2018/5/18 12:00	0.4	0.4	0.8	0.5	0.5	0.7	0.5	0.3	0.3	0.4
2018/5/25 12:00	0.4	0.4	0.8	0.5	0.5	0.7	0.5	0.3	0.3	0.4
2018/6/1 12:00	0.4	0.4	0.8	0.5	0.6	0.7	0.6	0.3	0.3	0.4
2018/6/8 12:00	0.5	0.4	0.8	0.6	0.6	0.8	0.6	0.3	0.3	0.4
2018/6/15 12:00	0.5	0.4	0.8	0.6	0.6	0.8	0.6	0.3	0.4	0.4
2018/6/22 12:00	0.5	0.5	0.8	0.6	0.6	0.8	0.6	0.3	0.4	0.5
2018/6/29 12:00	0.5	0.5	0.8	0.6	0.7	0.9	0.6	0.3	0.4	0.5
2018/7/6 12:00	0.5	0.5	0.8	0.7	0.7	0.9	0.7	0.3	0.4	0.5
2018/7/13 12:00	0.6	0.5	0.9	0.7	0.7	1.0	0.7	0.3	0.4	0.5
2018/7/20 12:00	0.6	0.5	0.9	0.8	0.8	1.0	0.7	0.4	0.5	0.6
2018/7/27 12:00	0.6	0.6	0.9	0.8	0.8	1.0	0.7	0.4	0.5	0.6
2018/8/3 12:00	0.7	0.6	0.9	0.8	0.9	1.1	0.8	0.4	0.5	0.6
2018/8/10 12:00	0.7	0.6	1.0	0.9	0.9	1.2	0.8	0.4	0.5	0.6
2018/8/17 12:00	0.7	0.7	1.0	0.9	1.0	1.2	0.8	0.4	0.5	0.7
2018/8/24 12:00	0.8	0.7	1.0	1.0	1.0	1.3	0.9	0.4	0.6	0.7
2018/8/31 12:00	0.8	0.8	1.1	1.0	1.1	1.4	0.9	0.4	0.6	0.7
2018/9/7 12:00	0.8	0.8	1.1	1.1	1.1	1.4	0.9	0.4	0.6	0.7
2018/9/14 12:00	0.8	0.8	1.1	1.1	1.1	1.5	1.0	0.4	0.6	0.8
2018/9/21 12:00	0.8	0.8	1.1	1.1	1.2	1.5	1.0	0.4	0.6	0.8
2018/9/28 12:00	0.8	0.8	1.1	1.1	1.2	1.5	1.0	0.4	0.6	0.8
2018/10/5 12:00	0.8	0.8	1.1	1.1	1.2	1.6	1.0	0.4	0.6	0.8
2018/10/12 12:00	0.8	0.7	1.1	1.1	1.2	1.6	1.0	0.4	0.6	0.8
2018/10/19 12:00	0.8	0.8	1.1	1.2	1.2	1.6	1.0	0.4	0.7	0.9
2018/10/26 12:00	0.8	0.8	1.1	1.2	1.2	1.6	1.0	0.5	0.7	0.9
2018/11/2 12:00	0.8	0.8	1.2	1.2	1.2	1.7	1.1	0.5	0.8	1.0
2018/11/9 12:00	0.9	0.8	1.2	1.2	1.3	1.7	1.1	0.5	0.8	1.0
2018/11/16 12:00	0.9	0.8	1.2	1.2	1.3	1.8	1.1	0.5	0.8	1.0
2018/11/23 12:00	0.9	0.8	1.2	1.2	1.3	1.8	1.2	0.5	0.8	1.0
2018/11/30 12:00	0.9	0.8	1.2	1.3	1.3	1.8	1.2	0.5	0.8	1.1
2018/12/7 12:00	0.9	0.9	1.3	1.3	1.3	1.9	1.2	0.5	0.9	1.1
2018/12/14 12:00	0.9	0.9	1.3	1.3	1.4	1.9	1.2	0.6	0.9	1.1
2018/12/21 12:00	0.9	0.9	1.3	1.3	1.4	2.0	1.3	0.6	0.9	1.2
2018/12/28 12:00	0.9	0.9	1.3	1.3	1.4	2.0	1.3	0.6	0.9	1.2
2019/1/4 12:00	1.0	0.9	1.4	1.4	1.4	2.0	1.3	0.6	1.0	1.2
2019/1/11 12:00	1.0	1.0	1.4	1.4	1.5	2.1	1.3	0.6	1.0	1.2
2019/1/18 12:00	1.0	1.0	1.4	1.4	1.5	2.1	1.4	0.6	1.0	1.3
2019/1/25 12:00	1.0	1.0	1.4	1.5	1.5	2.1	1.4	0.6	1.0	1.3
2019/2/1 12:00	1.0	1.0	1.4	1.5	1.5	2.2	1.4	0.6	1.1	1.3
2019/2/8 12:00	1.1	1.0	1.4	1.5	1.6	2.2	1.5	0.7	1.1	1.4

[沈下量]

事業区域名	
計測地点名	12D_1(ポンプ部)
計測日	沈下量 (cm)
2017/11/25 12:00	0.0
2017/12/25 12:00	0.1
2018/1/5 12:00	0.2
2018/1/12 12:00	0.2
2018/1/19 12:00	0.2
2018/1/26 12:00	0.2
2018/2/2 12:00	0.2
2018/2/9 12:00	0.3
2018/2/16 12:00	0.3
2018/2/23 12:00	0.3
2018/3/2 12:00	0.3
2018/3/9 12:00	0.4
2018/3/16 12:00	0.5
2018/3/23 12:00	0.5
2018/3/30 12:00	0.5
2018/4/6 12:00	0.5
2018/4/13 12:00	0.5
2018/4/20 12:00	0.5
2018/4/27 12:00	0.6
2018/5/4 12:00	0.6
2018/5/11 12:00	0.6
2018/5/18 12:00	0.6
2018/5/25 12:00	0.6
2018/6/1 12:00	0.6
2018/6/8 12:00	0.6
2018/6/15 12:00	0.6
2018/6/22 12:00	0.6
2018/6/29 12:00	0.7
2018/7/6 12:00	0.7
2018/7/13 12:00	0.7
2018/7/20 12:00	0.7
2018/7/27 12:00	0.8
2018/8/3 12:00	0.8
2018/8/10 12:00	0.9
2018/8/17 12:00	0.9
2018/8/24 12:00	0.9
2018/8/31 12:00	0.9
2018/9/7 12:00	0.9
2018/9/14 12:00	0.9
2018/9/21 12:00	0.9
2018/9/28 12:00	0.9
2018/10/5 12:00	0.9
2018/10/12 12:00	0.9
2018/10/19 12:00	0.9
2018/10/26 12:00	1.0
2018/11/2 12:00	1.0
2018/11/9 12:00	1.0
2018/11/16 12:00	1.0
2018/11/23 12:00	1.0
2018/11/30 12:00	1.0
2018/12/7 12:00	1.0
2018/12/14 12:00	1.0
2018/12/21 12:00	1.0
2018/12/28 12:00	1.1
2019/1/4 12:00	1.1
2019/1/11 12:00	1.1
2019/1/18 12:00	1.1
2019/1/25 12:00	1.1
2019/2/1 12:00	1.1
2019/2/8 12:00	1.1

[地下水位]

事業区域名	対策範囲外									
計測地点名	4B_1		5W_1		8W_2		9B_1		10B_1	
計測地点地盤高 (T.P.m)	9.16		9.26		9.14		8.73		9.28	
計測日	地下水位 (T.P.m)	地下水位 (GLm)	地下水位 (T.P.m)	地下水位 (GLm)	地下水位 (T.P.m)	地下水位 (GLm)	地下水位 (T.P.m)	地下水位 (GLm)	地下水位 (T.P.m)	地下水位 (GLm)
2017/11/25 12:00	8.22	-0.936	8.67	-0.589	8.61	-0.527	7.67	-1.061	7.29	-1.992
2017/12/25 12:00	7.91	-1.255	8.51	-0.750	8.37	-0.768	7.23	-1.501	7.08	-2.198
2018/1/5 12:00	7.78	-1.377	8.38	-0.878	8.31	-0.828	7.08	-1.655	6.98	-2.299
2018/1/12 12:00	7.73	-1.428	8.35	-0.908	8.28	-0.863	6.99	-1.735	6.95	-2.334
2018/1/19 12:00	7.70	-1.464	8.39	-0.870	8.25	-0.893	6.96	-1.767	6.94	-2.339
2018/1/26 12:00	7.82	-1.339	8.56	-0.698	8.24	-0.904	7.23	-1.500	7.09	-2.186
2018/2/2 12:00	7.86	-1.300	8.73	-0.535	8.30	-0.840	7.25	-1.476	7.05	-2.232
2018/2/9 12:00	7.78	-1.384	8.61	-0.649	8.37	-0.767	7.28	-1.447	7.06	-2.221
2018/2/16 12:00	7.74	-1.420	8.53	-0.727	8.33	-0.810	7.19	-1.538	7.00	-2.276
2018/2/23 12:00	7.69	-1.471	8.47	-0.794	8.28	-0.863	7.06	-1.666	6.94	-2.341
2018/3/2 12:00	7.82	-1.340	8.75	-0.515	8.46	-0.676	7.35	-1.383	7.09	-2.190
2018/3/9 12:00	8.22	-0.944	8.94	-0.319	9.09	-0.047	8.28	-0.447	7.25	-2.034
2018/3/16 12:00	8.24	-0.919	8.68	-0.581	8.84	-0.302	7.91	-0.822	7.36	-1.916
2018/3/23 12:00	8.40	-0.757	8.76	-0.496	8.99	-0.154	8.24	-0.491	7.45	-1.828
2018/3/30 12:00	8.26	-0.898	8.62	-0.637	8.70	-0.437	7.88	-0.852	7.34	-1.943
2018/4/6 12:00	8.18	-0.977	8.50	-0.762	8.52	-0.623	7.72	-1.008	7.28	-2.004
2018/4/13 12:00	8.06	-1.095	8.35	-0.906	8.38	-0.764	7.55	-1.181	7.16	-2.120
2018/4/20 12:00	8.06	-1.095	8.44	-0.818	8.30	-0.835	7.55	-1.179	7.23	-2.048
2018/4/27 12:00	8.27	-0.893	8.72	-0.536	8.41	-0.734	7.83	-0.903	7.38	-1.905
2018/5/4 12:00	8.26	-0.904	8.61	-0.651	8.28	-0.856	7.72	-1.013	7.38	-1.895
2018/5/11 12:00	8.40	-0.763	8.73	-0.525	8.40	-0.744	7.96	-0.772	7.40	-1.876
2018/5/18 12:00	8.40	-0.762	8.61	-0.650	8.41	-0.732	7.88	-0.851	7.45	-1.830
2018/5/25 12:00	8.33	-0.828	8.49	-0.766	8.30	-0.843	7.78	-0.948	7.42	-1.862
2018/6/1 12:00	8.34	-0.824	8.62	-0.638	8.22	-0.916	7.76	-0.969	7.41	-1.875
2018/6/8 12:00	8.28	-0.879	8.48	-0.780	8.16	-0.977	7.62	-1.114	7.36	-1.923
2018/6/15 12:00	8.31	-0.851	8.64	-0.622	8.14	-0.997	7.75	-0.979	7.36	-1.916
2018/6/22 12:00	8.35	-0.806	8.73	-0.528	8.29	-0.848	7.92	-0.808	7.41	-1.872
2018/6/29 12:00	8.25	-0.911	8.53	-0.726	8.26	-0.881	7.74	-0.993	7.34	-1.937
2018/7/6 12:00	8.25	-0.911	8.43	-0.830	8.18	-0.959	7.67	-1.062	7.33	-1.948
2018/7/13 12:00	8.22	-0.938	8.41	-0.849	8.12	-1.017	7.67	-1.064	7.35	-1.926
2018/7/20 12:00	8.14	-1.021	8.18	-1.081	8.05	-1.086	7.46	-1.266	7.32	-1.957
2018/7/27 12:00	8.08	-1.083	8.03	-1.230	7.98	-1.156	7.34	-1.391	7.32	-1.959
2018/8/3 12:00	8.19	-0.970	8.34	-0.923	7.96	-1.176	7.55	-1.178	7.37	-1.913
2018/8/10 12:00	8.18	-0.978	8.42	-0.841	7.94	-1.203	7.58	-1.147	7.38	-1.905
2018/8/17 12:00	8.08	-1.082	8.20	-1.060	7.90	-1.240	7.39	-1.345	7.25	-2.029
2018/8/24 12:00	8.00	-1.164	8.04	-1.215	7.86	-1.277	7.23	-1.495	7.15	-2.127
2018/8/31 12:00	7.93	-1.232	8.00	-1.261	7.83	-1.311	7.22	-1.508	7.12	-2.162
2018/9/7 12:00	8.20	-0.958	8.62	-0.641	7.94	-1.199	7.66	-1.069	7.40	-1.883
2018/9/14 12:00	8.22	-0.944	8.75	-0.513	7.98	-1.159	7.71	-1.019	7.38	-1.902
2018/9/21 12:00	8.38	-0.778	8.93	-0.331	8.13	-1.012	8.25	-0.476	7.43	-1.846
2018/9/28 12:00	8.53	-0.625	8.76	-0.499	8.79	-0.351	8.27	-0.458	7.56	-1.725
2018/10/5 12:00	8.49	-0.671	8.68	-0.585	8.78	-0.355	8.01	-0.723	7.49	-1.788
2018/10/12 12:00	8.33	-0.834	8.59	-0.669	8.62	-0.520	7.82	-0.910	7.38	-1.905
2018/10/19 12:00	8.22	-0.938	8.59	-0.672	8.55	-0.595	7.71	-1.021	7.30	-1.977
2018/10/26 12:00	8.12	-1.038	8.54	-0.718	8.45	-0.692	7.55	-1.176	7.24	-2.042
2018/11/2 12:00	8.05	-1.112	8.51	-0.755	8.38	-0.758	7.49	-1.240	7.20	-2.076
2018/11/9 12:00	8.07	-1.093	8.66	-0.601	8.48	-0.660	7.55	-1.178	7.25	-2.032
2018/11/16 12:00	7.97	-1.191	8.55	-0.711	8.38	-0.758	7.39	-1.339	7.17	-2.105
2018/11/23 12:00	7.90	-1.258	8.53	-0.732	8.33	-0.810	7.29	-1.436	7.13	-2.152
2018/11/30 12:00	7.83	-1.328	8.45	-0.813	8.28	-0.857	7.15	-1.578	7.07	-2.213
2018/12/7 12:00	7.81	-1.352	8.51	-0.751	8.25	-0.892	7.12	-1.612	7.05	-2.225
2018/12/14 12:00	7.88	-1.281	8.70	-0.563	8.33	-0.810	7.37	-1.358	7.16	-2.121
2018/12/21 12:00	7.79	-1.371	8.59	-0.665	8.27	-0.870	7.18	-1.554	7.09	-2.195
2018/12/28 12:00	7.73	-1.425	8.52	-0.738	8.22	-0.916	7.03	-1.699	7.04	-2.238
2019/1/4 12:00	7.66	-1.500	8.43	-0.827	8.19	-0.948	6.89	-1.838	6.94	-2.336
2019/1/11 12:00	7.61	-1.550	8.38	-0.877	8.16	-0.977	6.83	-1.896	6.93	-2.347
2019/1/18 12:00	7.56	-1.597	8.35	-0.914	8.13	-1.008	6.78	-1.953	6.90	-2.378
2019/1/25 12:00	7.51	-1.646	8.31	-0.953	8.11	-1.033	11.71	2.981	6.86	-2.418
2019/2/1 12:00	7.52	-1.640	8.40	-0.864	8.08	-1.057	5.92	-2.806	6.88	-2.404
2019/2/8 12:00	7.46	-1.704	8.37	-0.888	8.06	-1.079	6.84	-1.894	6.86	-2.418

[地下水位]

事業区域名	11B_1		11B_2		12W_6		12W_8	
計測地点名								
計測地点地盤高 (T.P.m)	8.65		8.38		8.71		8.43	
計測日	地下水位 (T.P.m)	地下水位 (GLm)	地下水位 (T.P.m)	地下水位 (GLm)	地下水位 (T.P.m)	地下水位 (GLm)	地下水位 (T.P.m)	地下水位 (GLm)
2017/11/25 12:00	6.99	-1.662	6.13	-2.250	7.61	-1.105	7.12	-1.310
2017/12/25 12:00	6.73	-1.918	6.08	-2.300	7.32	-1.394	6.88	-1.549
2018/1/5 12:00	6.60	-2.055	6.07	-2.308	7.24	-1.468	6.79	-1.638
2018/1/12 12:00	6.54	-2.115	6.07	-2.312	7.21	-1.498	6.75	-1.679
2018/1/19 12:00	6.52	-2.134	6.07	-2.308	7.18	-1.526	6.75	-1.678
2018/1/26 12:00	6.75	-1.900	6.09	-2.291	7.23	-1.479	6.83	-1.603
2018/2/2 12:00	6.68	-1.970	6.10	-2.281	7.23	-1.479	6.81	-1.621
2018/2/9 12:00	6.85	-1.803	6.09	-2.292	7.28	-1.427	6.78	-1.649
2018/2/16 12:00	6.81	-1.841	6.08	-2.296	7.26	-1.449	6.75	-1.681
2018/2/23 12:00	6.73	-1.925	6.09	-2.289	7.22	-1.492	6.73	-1.705
2018/3/2 12:00	7.07	-1.582	6.12	-2.260	7.45	-1.259	6.83	-1.598
2018/3/9 12:00	7.59	-1.057	6.39	-1.985	8.02	-0.692	7.64	-0.789
2018/3/16 12:00	7.29	-1.365	6.22	-2.158	7.77	-0.943	7.17	-1.264
2018/3/23 12:00	7.41	-1.242	6.33	-2.048	7.89	-0.818	7.38	-1.052
2018/3/30 12:00	7.17	-1.485	6.23	-2.152	7.74	-0.969	7.17	-1.259
2018/4/6 12:00	7.13	-1.517	6.23	-2.150	7.67	-1.039	7.11	-1.319
2018/4/13 12:00	7.02	-1.628	6.15	-2.230	7.55	-1.164	7.03	-1.403
2018/4/20 12:00	7.04	-1.614	6.19	-2.192	7.52	-1.193	7.02	-1.409
2018/4/27 12:00	7.35	-1.300	6.30	-2.083	7.72	-0.988	7.14	-1.293
2018/5/4 12:00	7.22	-1.434	6.31	-2.068	7.62	-1.093	7.10	-1.334
2018/5/11 12:00	7.34	-1.311	6.43	-1.946	7.81	-0.898	7.23	-1.198
2018/5/18 12:00	7.23	-1.424	6.35	-2.025	7.78	-0.930	7.19	-1.237
2018/5/25 12:00	7.18	-1.469	6.33	-2.050	7.67	-1.044	7.13	-1.300
2018/6/1 12:00	7.27	-1.385	6.41	-1.974	7.64	-1.066	7.12	-1.310
2018/6/8 12:00	7.18	-1.473	6.26	-2.122	7.55	-1.164	7.07	-1.358
2018/6/15 12:00	7.23	-1.419	6.28	-2.100	7.55	-1.164	7.11	-1.325
2018/6/22 12:00	7.29	-1.359	6.41	-1.973	7.71	-1.004	7.15	-1.276
2018/6/29 12:00	7.17	-1.478	6.22	-2.164	7.55	-1.162	7.08	-1.353
2018/7/6 12:00	7.13	-1.522	6.27	-2.109	7.51	-1.195	7.09	-1.338
2018/7/13 12:00	7.19	-1.465	6.23	-2.146	7.44	-1.268	7.03	-1.403
2018/7/20 12:00	7.10	-1.550	6.24	-2.144	7.37	-1.339	6.95	-1.477
2018/7/27 12:00	7.04	-1.607	6.25	-2.129	7.33	-1.382	6.90	-1.528
2018/8/3 12:00	7.22	-1.427	6.22	-2.163	7.38	-1.333	7.01	-1.420
2018/8/10 12:00	7.24	-1.411	6.22	-2.165	7.35	-1.365	7.01	-1.425
2018/8/17 12:00	7.11	-1.539	6.23	-2.151	7.24	-1.470	6.90	-1.533
2018/8/24 12:00	7.01	-1.644	6.17	-2.211	7.16	-1.549	6.83	-1.604
2018/8/31 12:00	6.98	-1.674	6.18	-2.199	7.11	-1.604	6.79	-1.640
2018/9/7 12:00	7.27	-1.375	6.17	-2.210	7.35	-1.359	7.00	-1.428
2018/9/14 12:00	7.25	-1.397	6.17	-2.207	7.40	-1.311	7.06	-1.369
2018/9/21 12:00	7.47	-1.178	6.30	-2.084	7.88	-0.827	7.41	-1.020
2018/9/28 12:00	7.37	-1.277	6.50	-1.882	7.89	-0.820	7.41	-1.020
2018/10/5 12:00	7.23	-1.424	6.15	-2.226	7.77	-0.942	7.24	-1.191
2018/10/12 12:00	7.13	-1.518	6.07	-2.312	7.64	-1.070	7.12	-1.311
2018/10/19 12:00	7.09	-1.556	6.06	-2.321	7.55	-1.157	7.05	-1.381
2018/10/26 12:00	7.01	-1.642	6.05	-2.326	7.45	-1.263	6.98	-1.454
2018/11/2 12:00	6.98	-1.670	6.05	-2.332	7.38	-1.328	6.93	-1.501
2018/11/9 12:00	7.11	-1.538	6.08	-2.301	7.45	-1.257	6.92	-1.506
2018/11/16 12:00	6.99	-1.655	6.05	-2.327	7.35	-1.355	6.85	-1.580
2018/11/23 12:00	6.93	-1.723	6.04	-2.340	7.30	-1.412	6.81	-1.624
2018/11/30 12:00	6.87	-1.778	6.04	-2.336	7.24	-1.468	6.76	-1.670
2018/12/7 12:00	6.87	-1.781	6.06	-2.316	7.21	-1.500	6.75	-1.683
2018/12/14 12:00	6.99	-1.657	6.05	-2.328	7.28	-1.428	6.81	-1.616
2018/12/21 12:00	6.93	-1.723	6.02	-2.356	7.21	-1.503	6.76	-1.673
2018/12/28 12:00	6.88	-1.770	6.01	-2.365	7.18	-1.534	6.72	-1.706
2019/1/4 12:00	6.80	-1.850	6.01	-2.367	7.13	-1.576	6.69	-1.736
2019/1/11 12:00	6.73	-1.916	6.02	-2.359	7.11	-1.601	6.67	-1.761
2019/1/18 12:00	6.58	-2.068	6.01	-2.374	7.08	-1.629	6.65	-1.785
2019/1/25 12:00	6.49	-2.165	6.00	-2.378	7.05	-1.656	6.62	-1.813
2019/2/1 12:00	6.48	-2.171	6.02	-2.362	7.04	-1.666	6.61	-1.816
2019/2/8 12:00	6.48	-2.173	6.01	-2.367	7.01	-1.695	6.59	-1.844