

目 次

1. 概況	1
2. 観測状況一覧	2
3. 地下水位・沈下量・降水量グラフ（4丁目）	3
地下水位・沈下量・降水量グラフ（6丁目）	4
地下水位・沈下量・降水量グラフ（7・12丁目）	5
地下水位・沈下量・降水量グラフ（8丁目）	6
地下水位・沈下量・降水量グラフ（10丁目）	7
地下水位・沈下量・降水量グラフ（11丁目）	8
地下水位・沈下量・降水量グラフ（12丁目）	9
地下水位・降水量グラフ（対象範囲外）	10
4. 地下水位・沈下量データ（4丁目）	11
地下水位・沈下量データ（6丁目）	15
地下水位・沈下量データ（7・12丁目）	19
地下水位・沈下量データ（8丁目）	23
地下水位・沈下量データ（10丁目）	27
地下水位・沈下量データ（11丁目）	31
地下水位・沈下量データ（12丁目）	35
地下水位データ（対象範囲外）	40

[概況]

[測定日] 2020年3月20日

[概況]

水位につきましては、すべての地点で、液状化に対して所定の安全性が確保された状態まで水位が低下しております。沈下に対しては第17回委員会において設定された一次管理値沈下量4cm以下の状態であり、問題はありません。

引き続き、水位状況、沈下状況を監視してまいります。第19回委員会において4丁目・6丁目・8丁目の沈下収束傾向の確認および地区外への影響がないことの確認がなされたことから、4月より4丁目・6丁目・8丁目・地区外は計測Dに移行いたします。また、民地部は計測機器の撤去を行いましたので観測終了となります。

7丁目・10丁目・11丁目・12丁目は民地部の継続観測の了承も得られたことから4月より計測Eに移行いたします。

計測移行に伴い、4月以降はデータ公表も各月更新となります。

※地下水位の測定値はGL表示値とT.P.表示値があります（表示単位：m）。

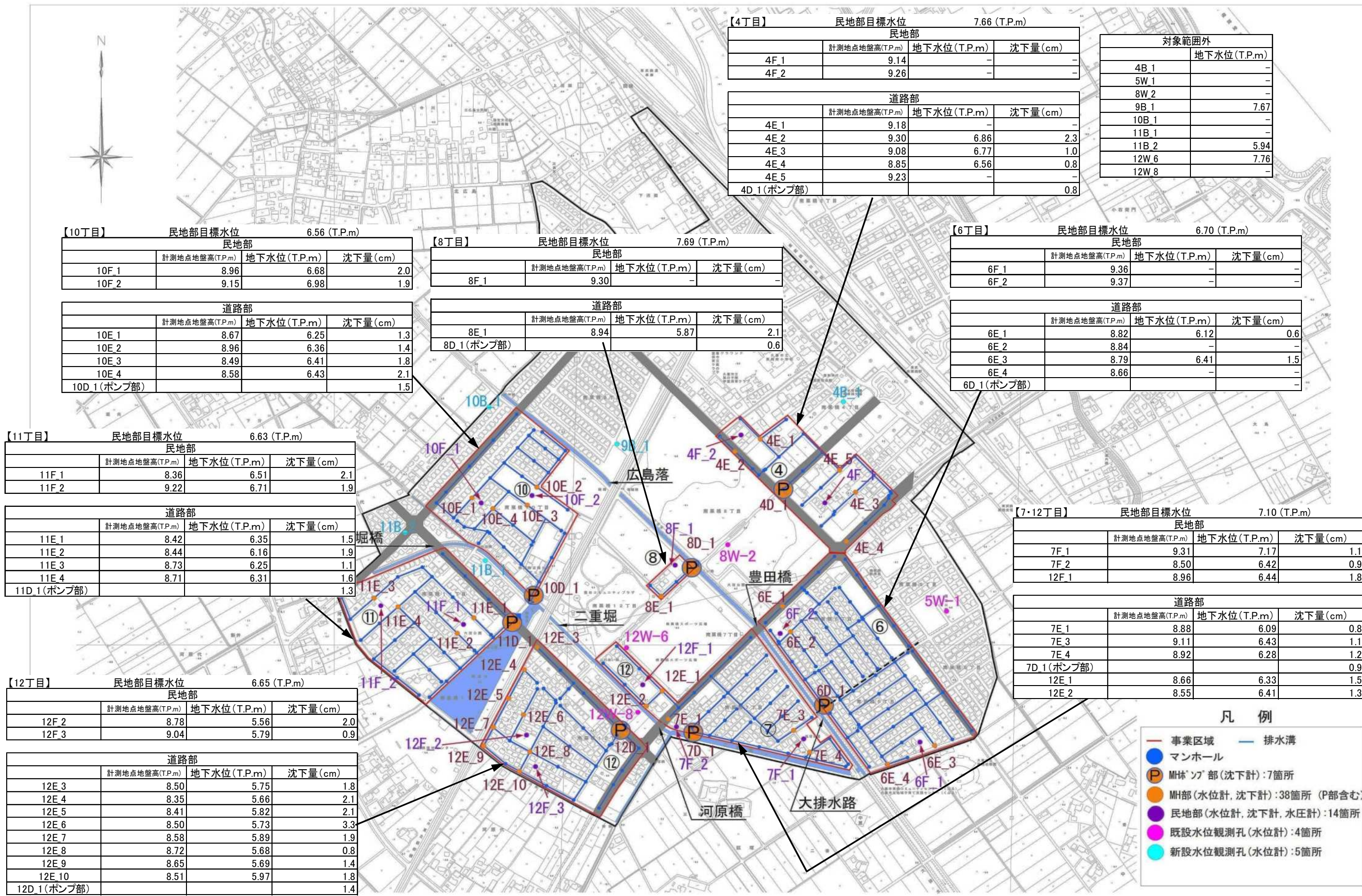
- ・GLとはGround Level（地盤面）の略です。GL-1.00mは、地盤面から1m下がった高さを表します。
- ・T.P.とはTokyo Peil（東京湾平均海水面）の略です。東京湾の平均海水面を0mとした時の高さを表し、測量法にて定めている高さの基準になります。

※降水量データは、気象庁（久喜）観測データを示す。

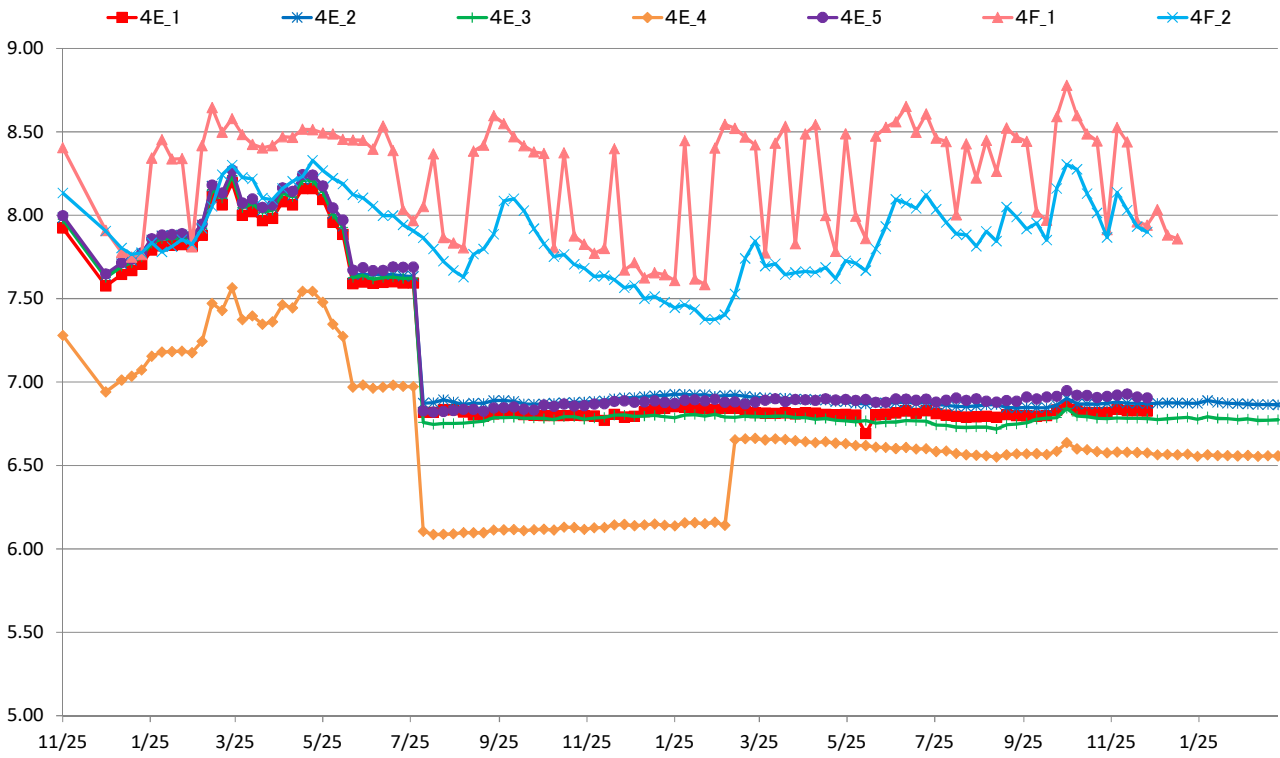
- ・計測A（常時測定 沈下：自動観測、水位：自動観測 データは通信管理）
- ・計測B（1回測定/1か月 沈下：地表面水準測量、水位：ロープ式水位計）
- ・計測C（1回測定/3か月 沈下：地表面水準測量、水位：ロープ式水位計）
- ・計測D（1回測定/6か月 沈下：地表面水準測量、水位：ロープ式水位計）
- ・計測E（常時測定 沈下：自動観測、水位：自動観測 データは現地で回収 頻度は計測B,C,Dに合わせる）

※自動観測終了地点

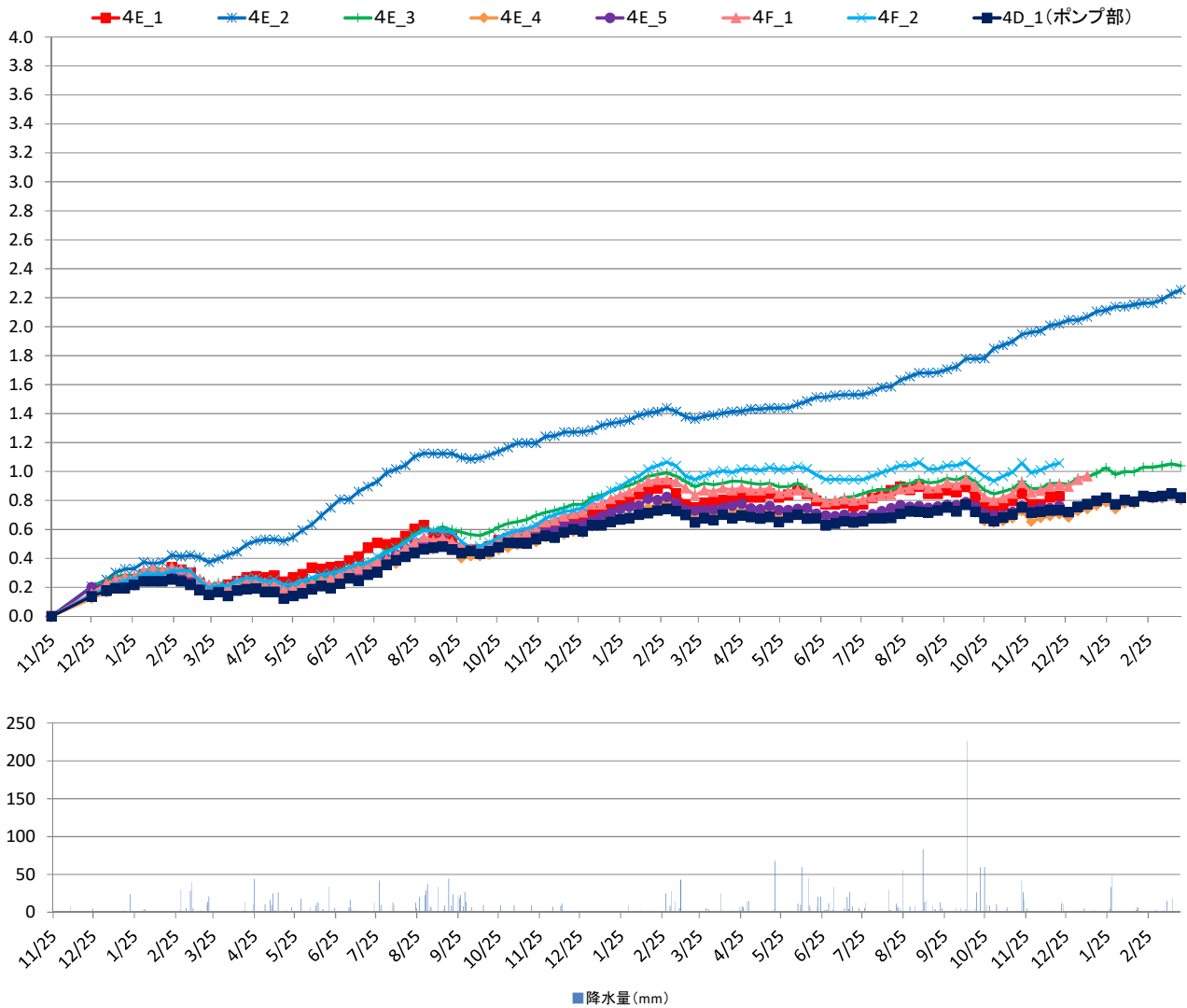
- ・4丁目 4F_1：1/12、4F_2：12/23、4E_1：12/25、4E_5：12/24
- ・6丁目 6E_2：12/21、6E_4：1/9、6F_1：12/26、6F_2：12/27、6D_1：2/11
- ・8丁目 8F_1：12/21
- ・地区外 4B_1：12/26、5W_1：11/18、8W_2：2/11、10B_1：2/6、11B_1：2/11、12W_8：11/26



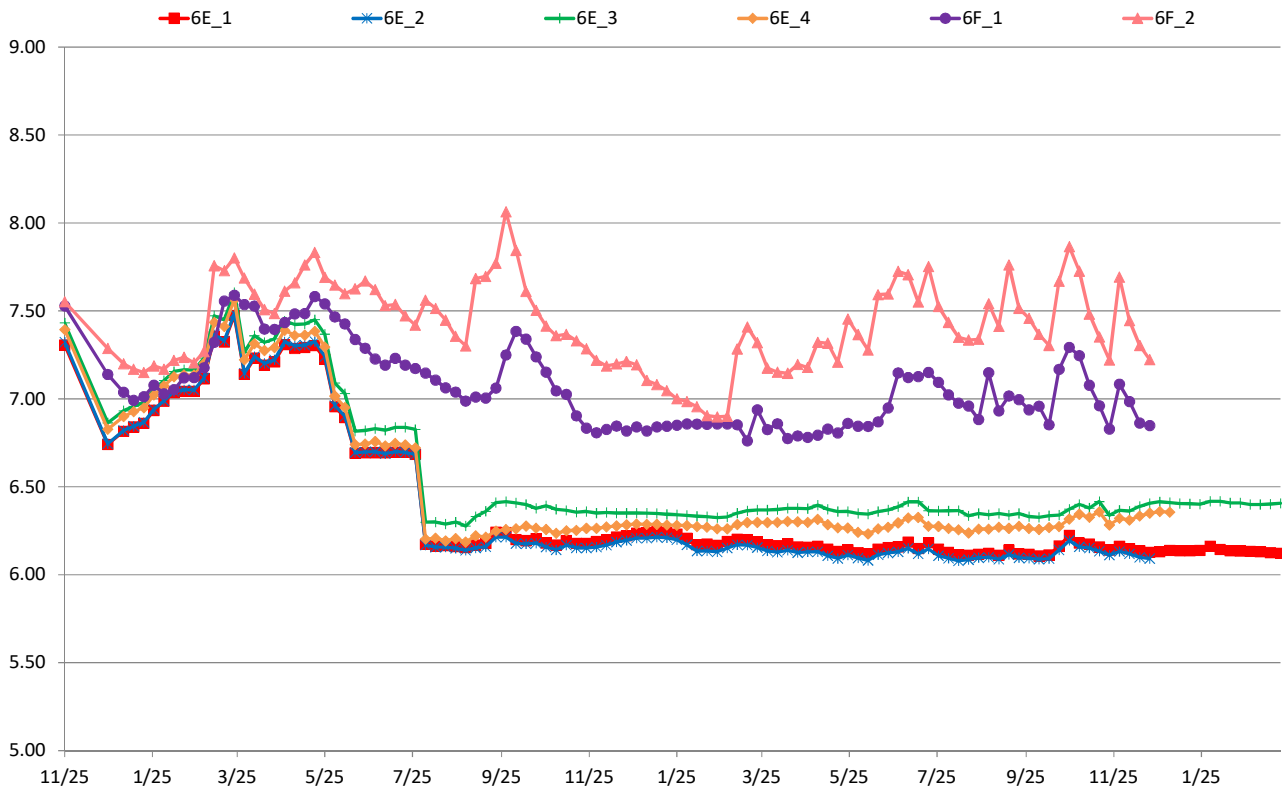
4丁目水位 (T.P+m)



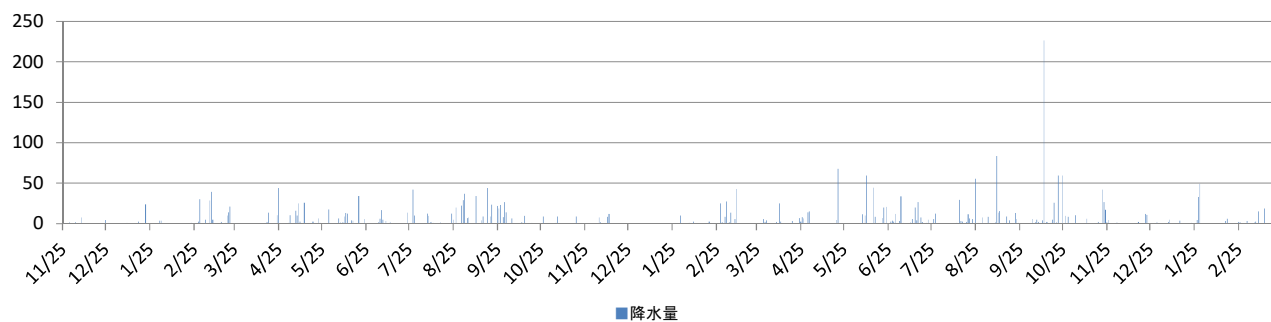
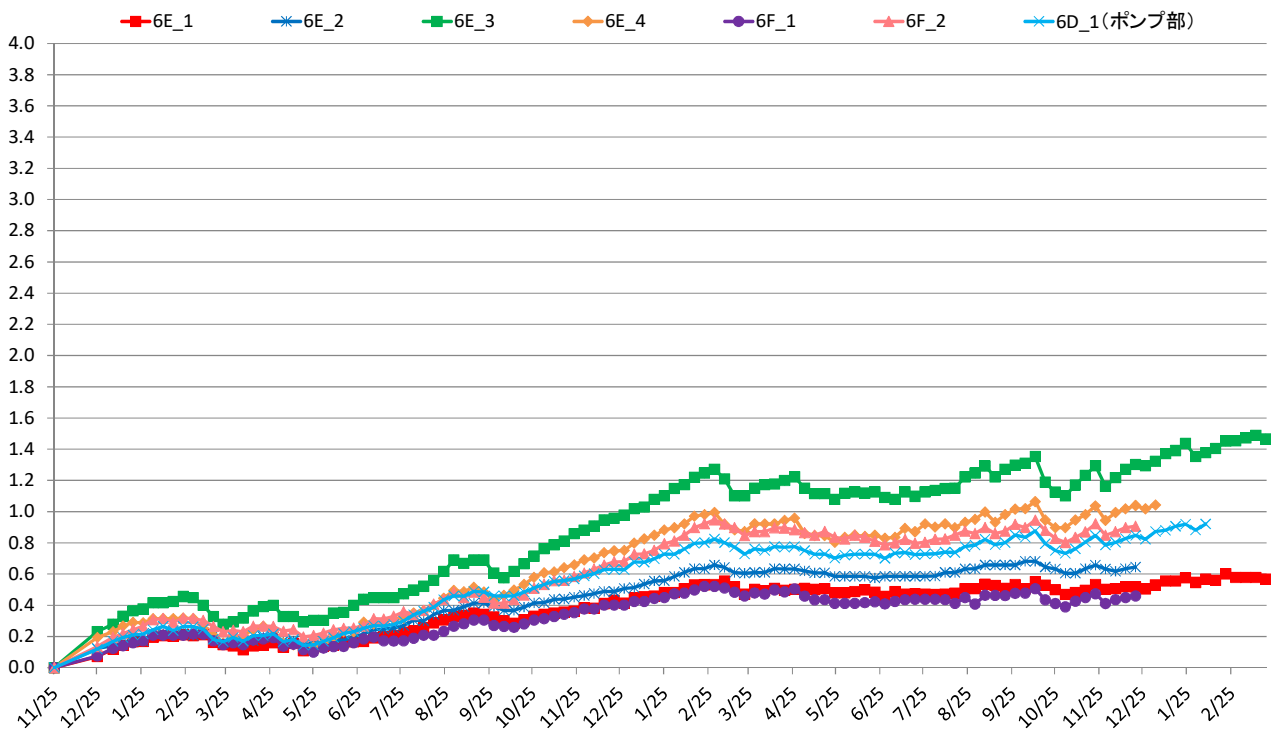
4丁目沈下 (G.L-cm)



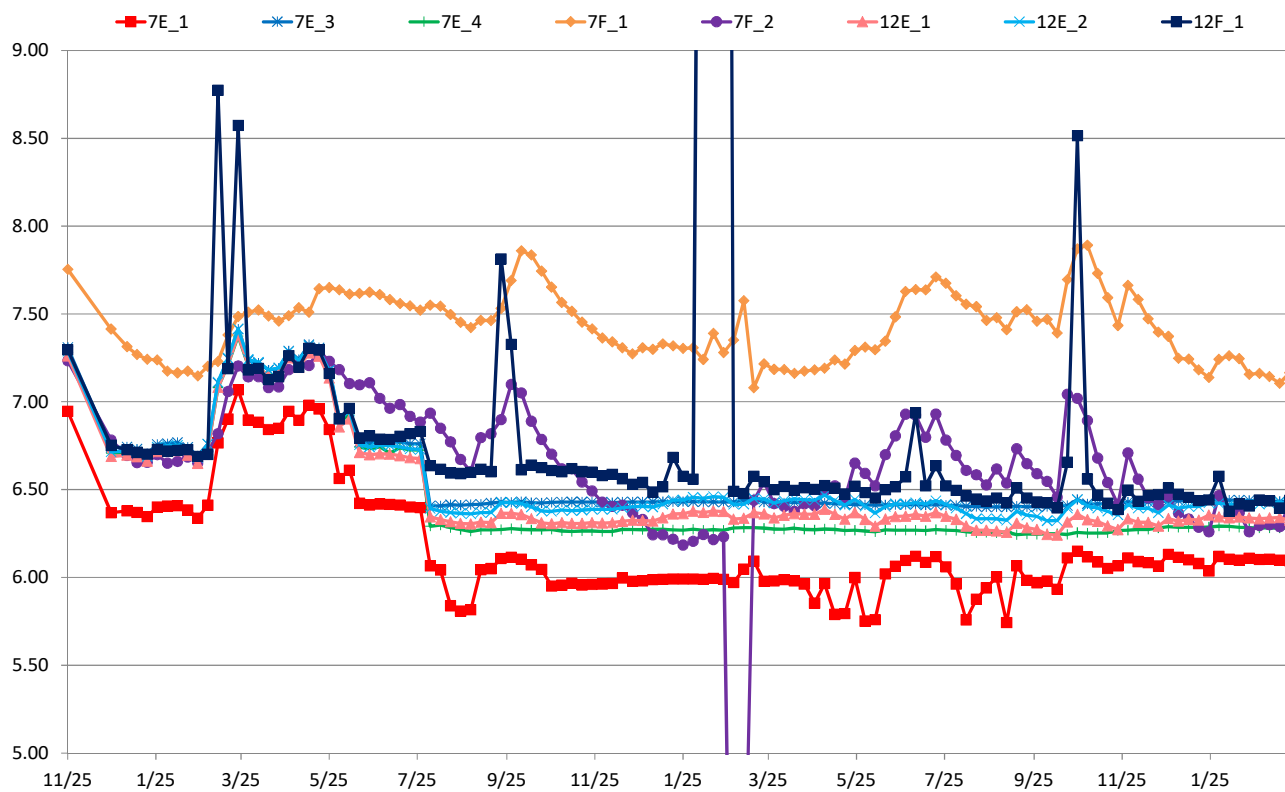
6丁目水位 (T.P+m)



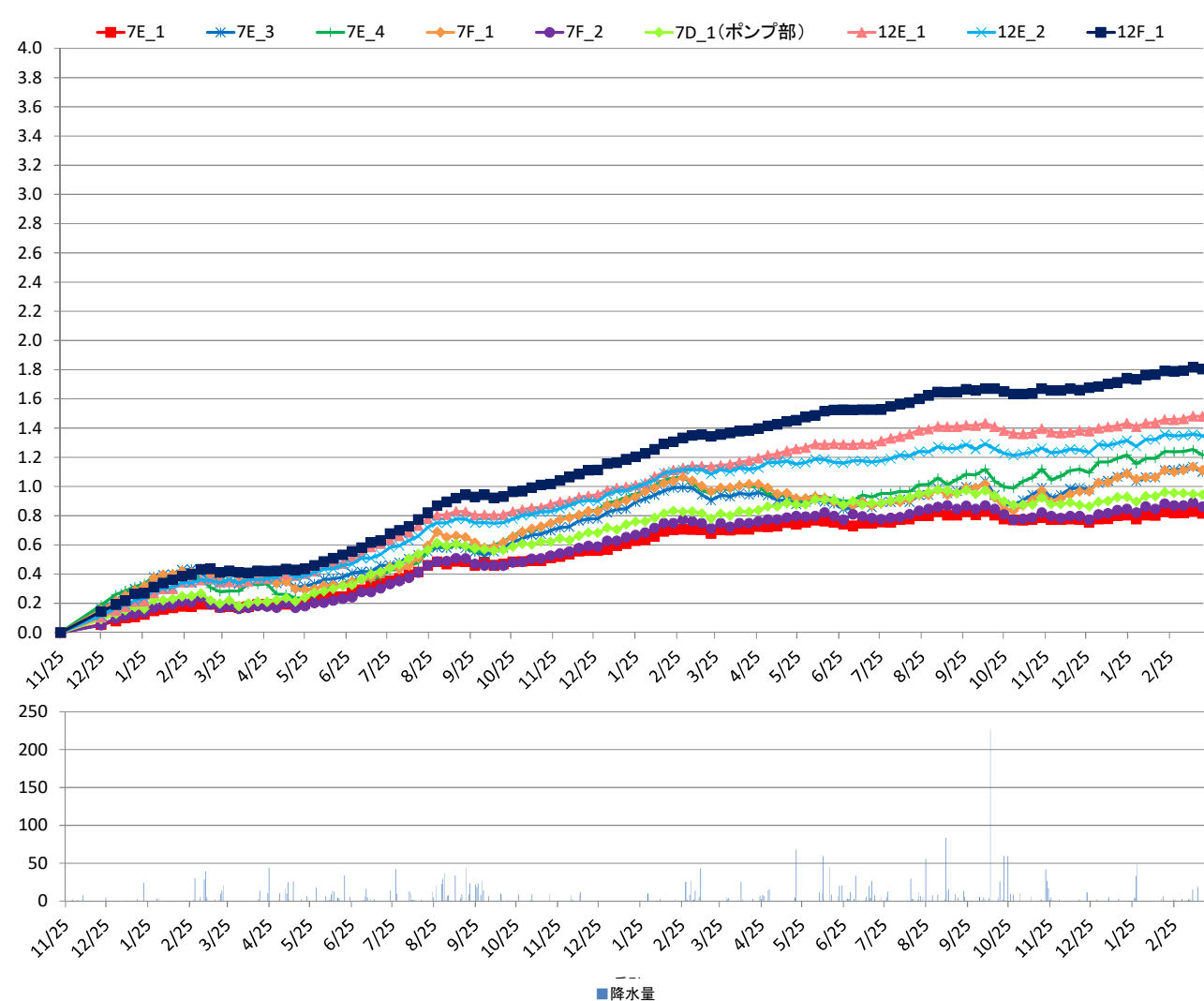
6丁目沈下 (G.L-cm)



7・12丁目水位 (T.P+m)

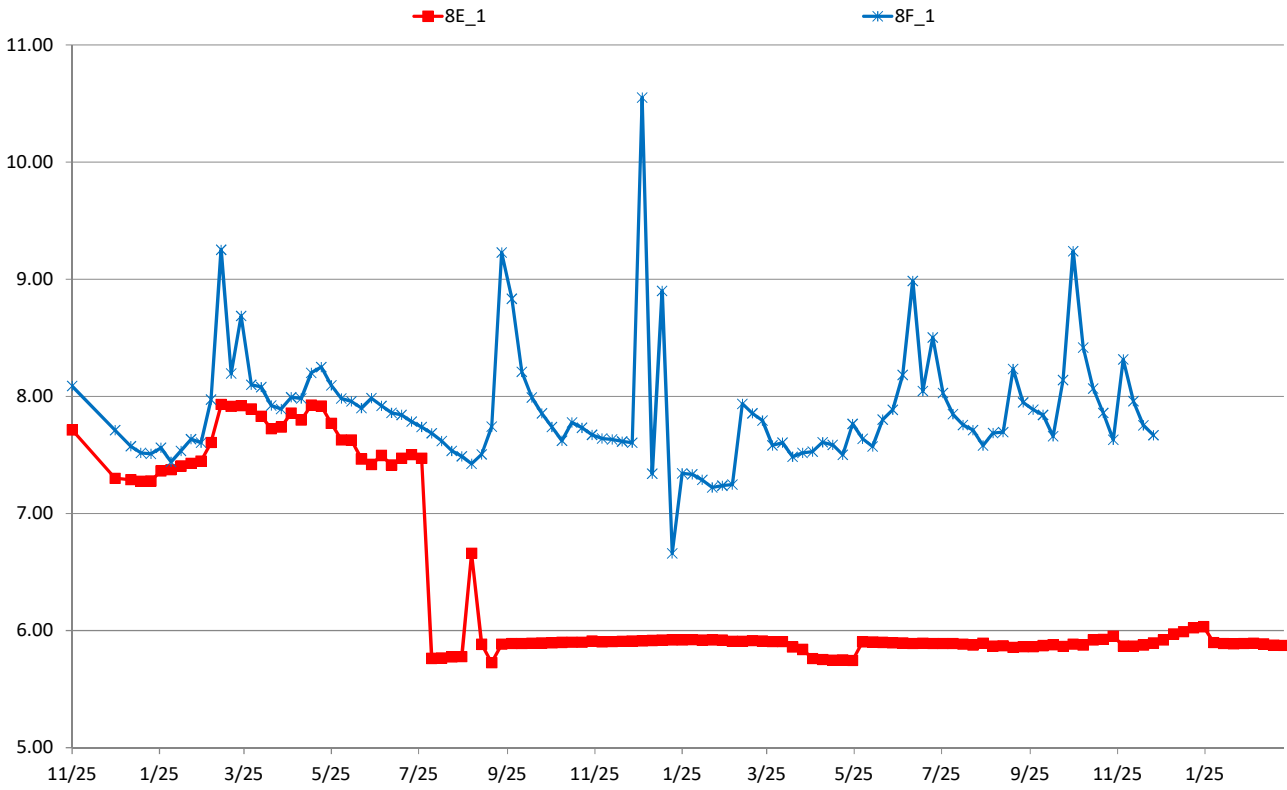


7・12丁目沈下 (G.L-cm)

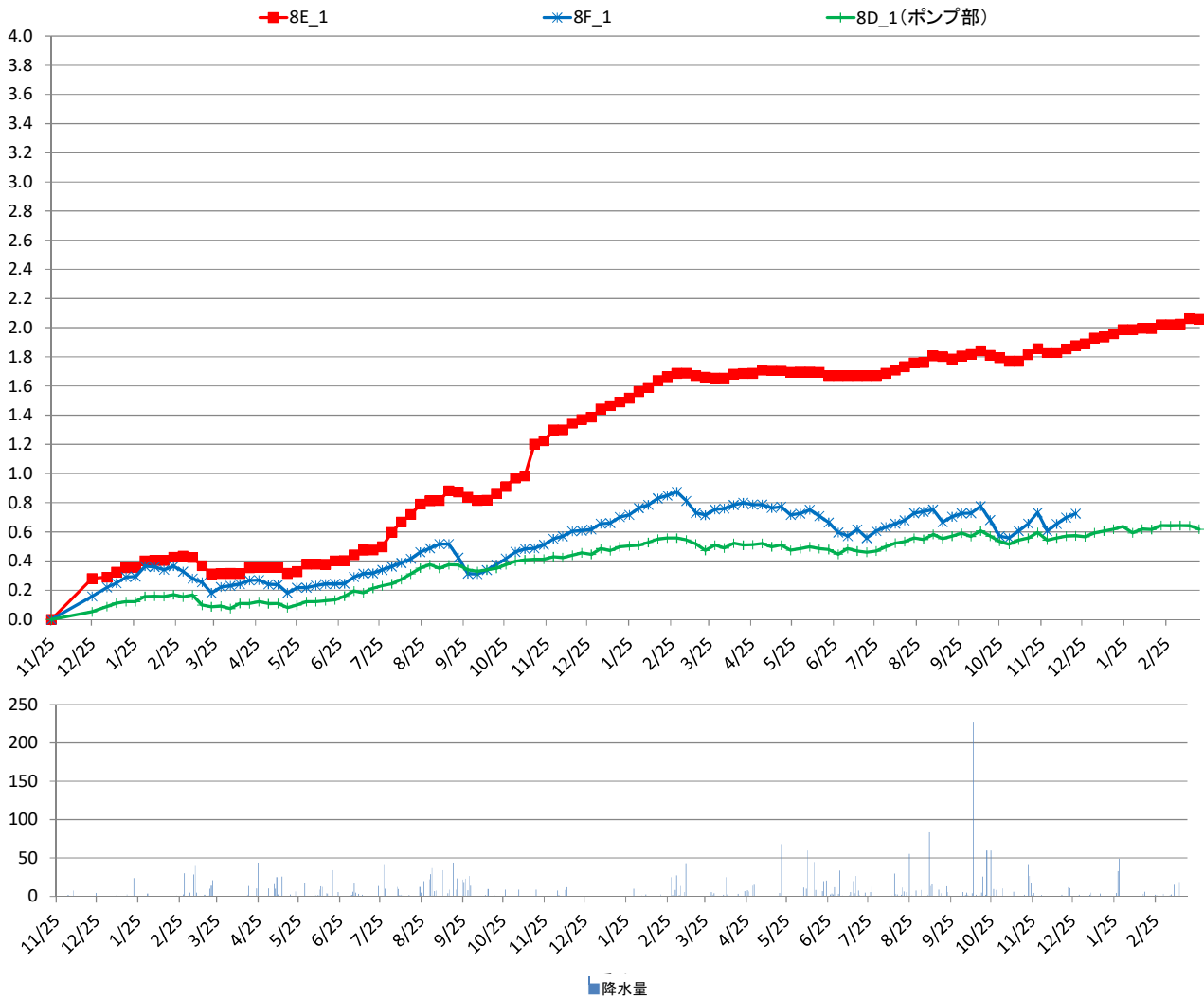


■ 降水量

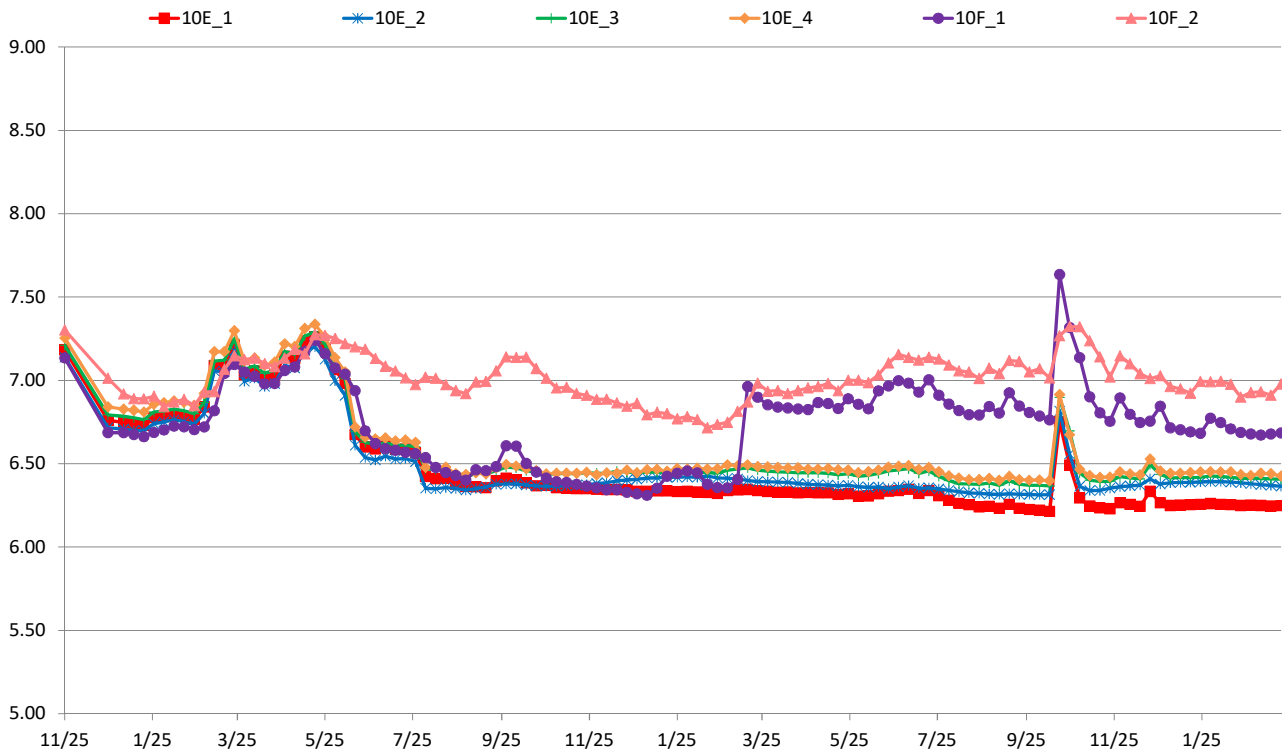
8丁目水位 (T.P+m)



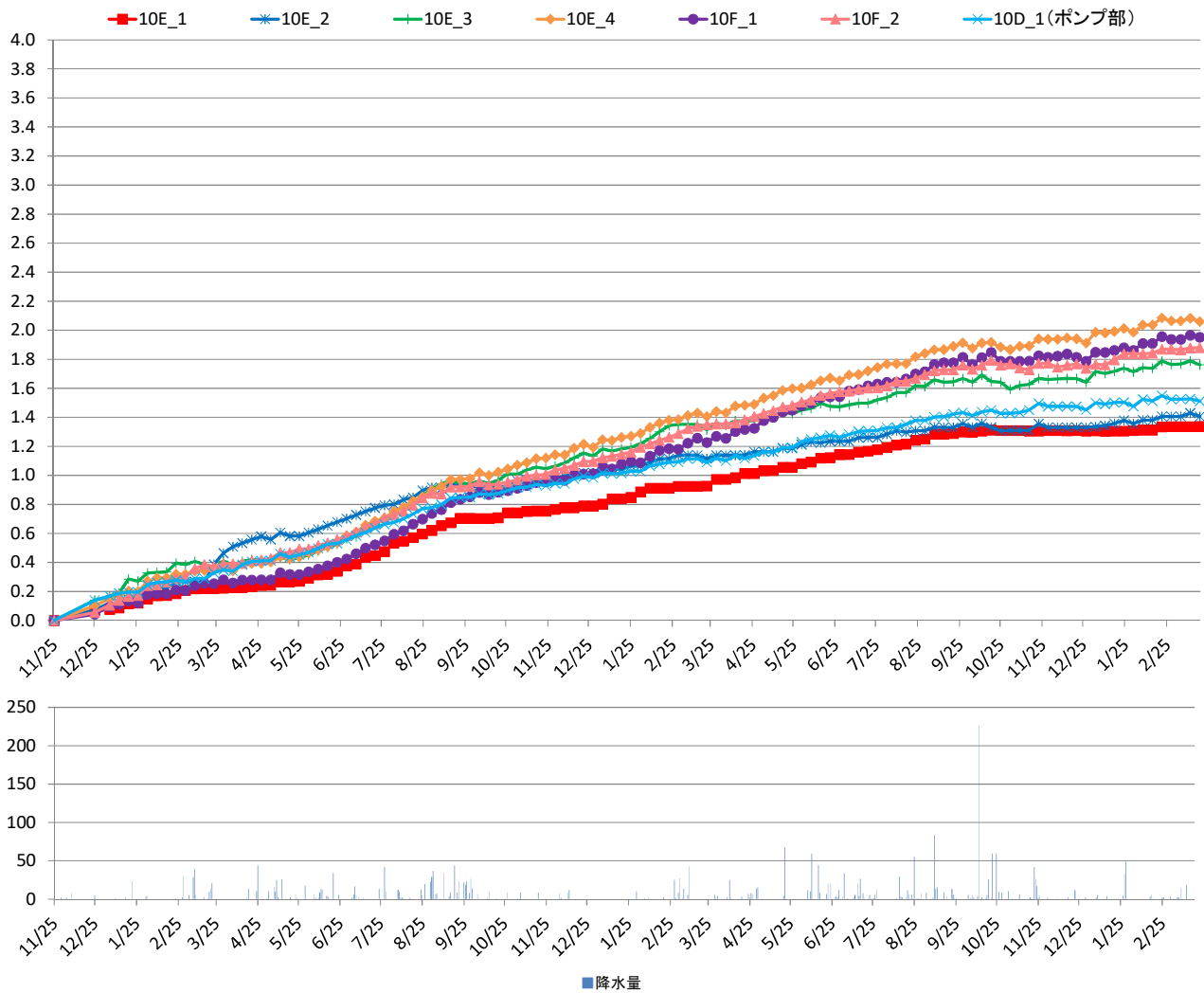
8丁目沈下 (G.L-cm)



10丁目水位 (T.P+m)

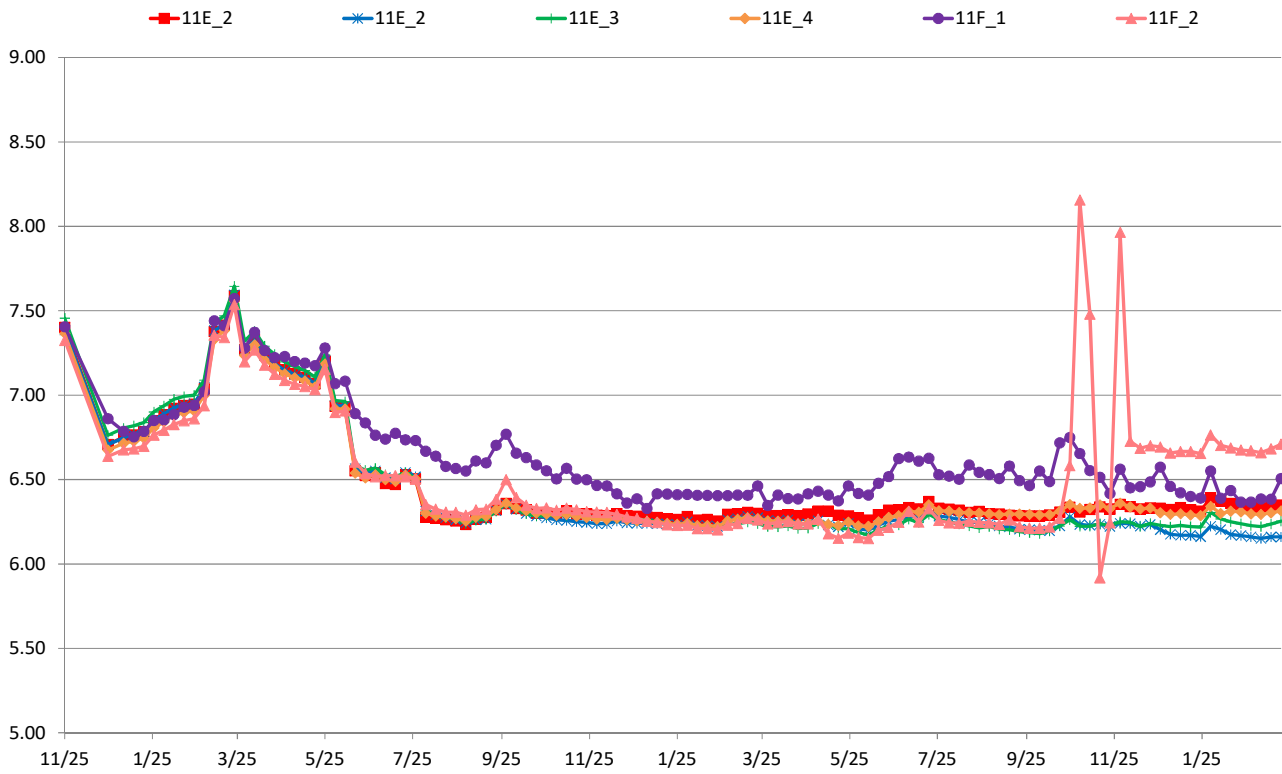


10丁目沈下 (G.L-cm)

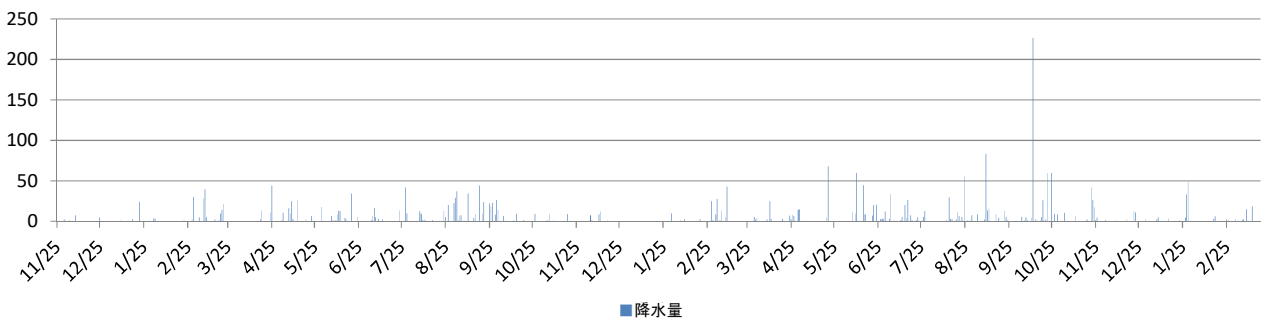
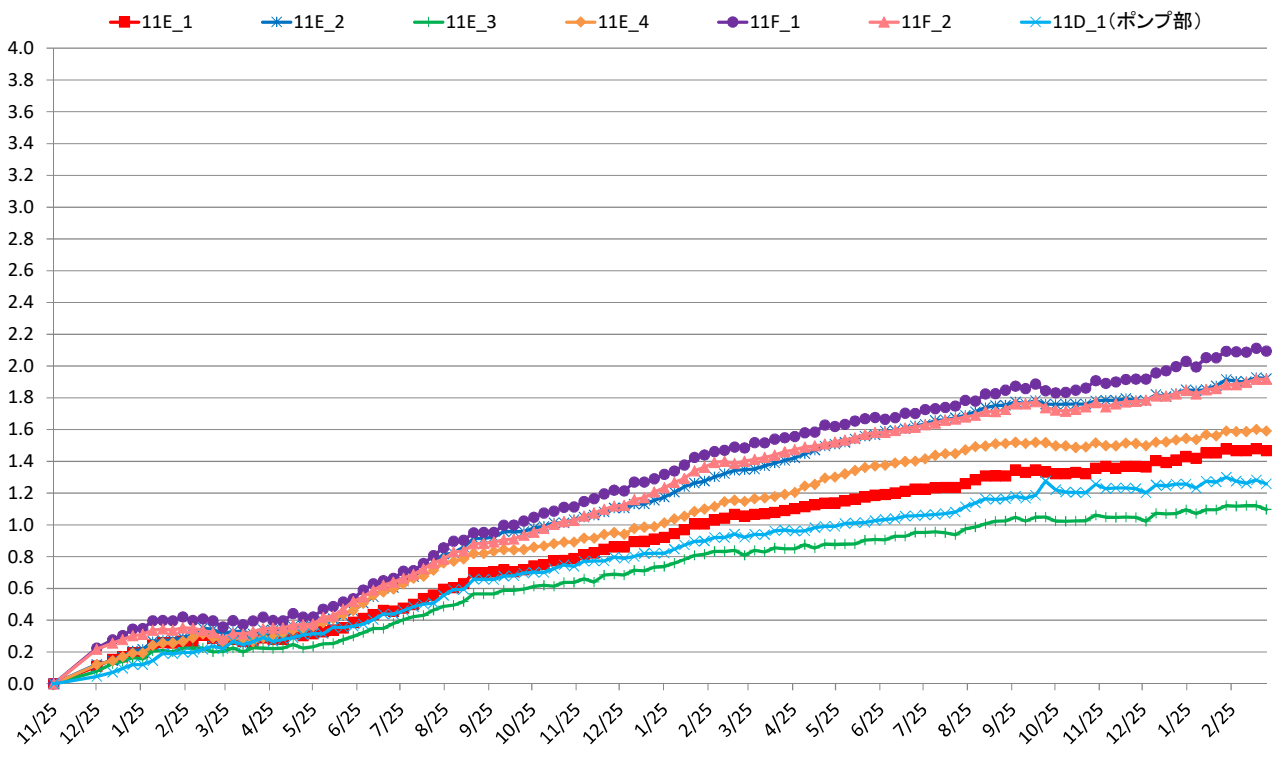


■降水量

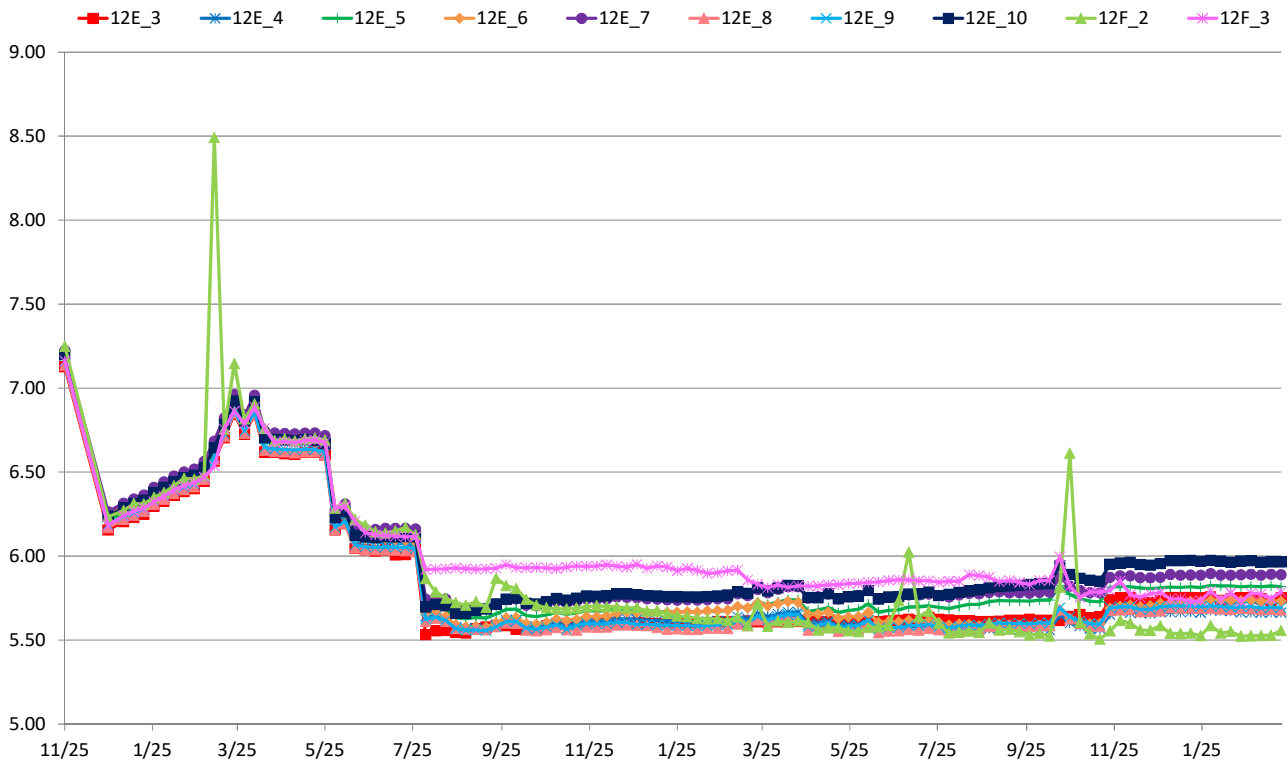
11丁目水位 (T.P+m)



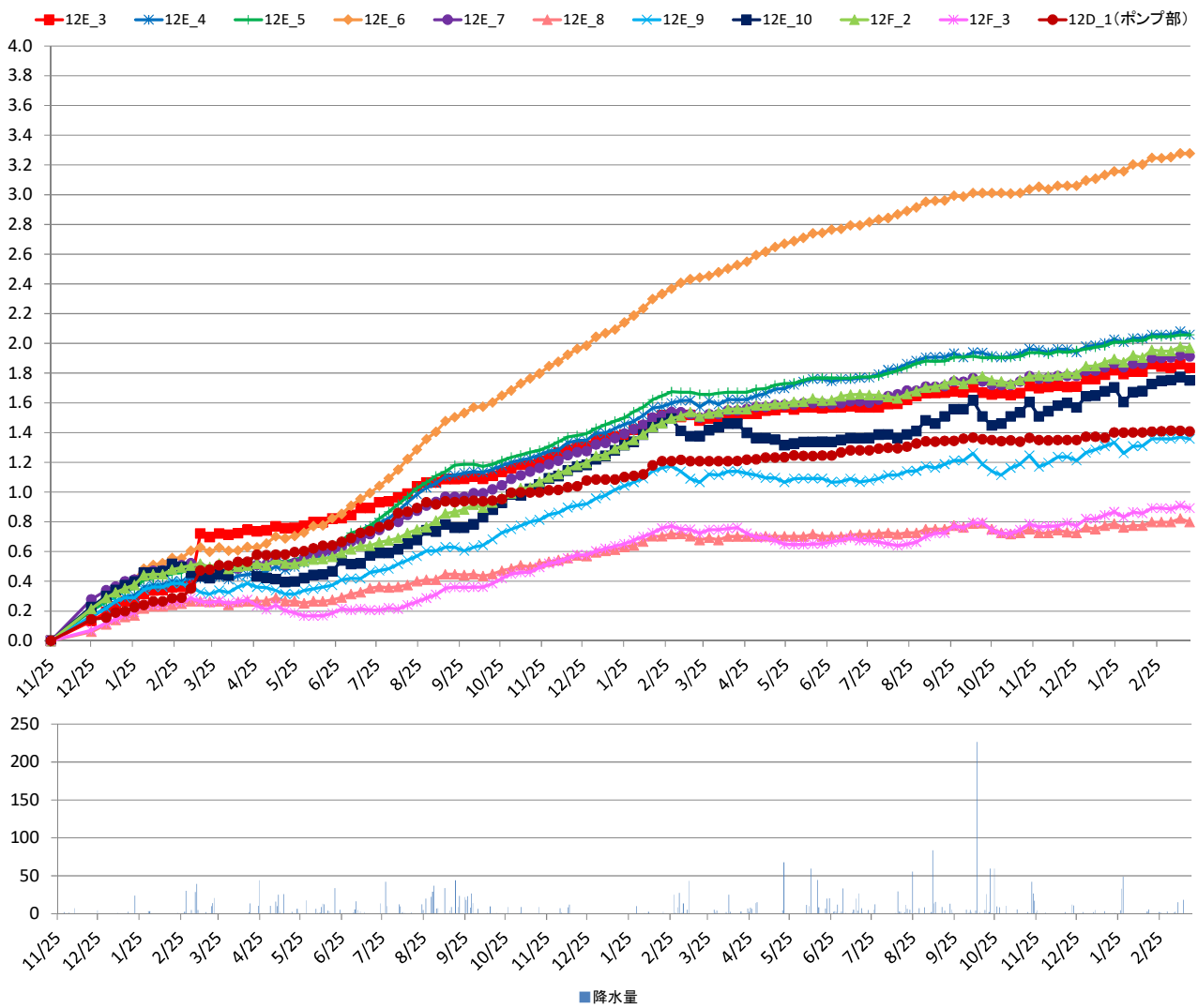
11丁目沈下 (G.L-cm)



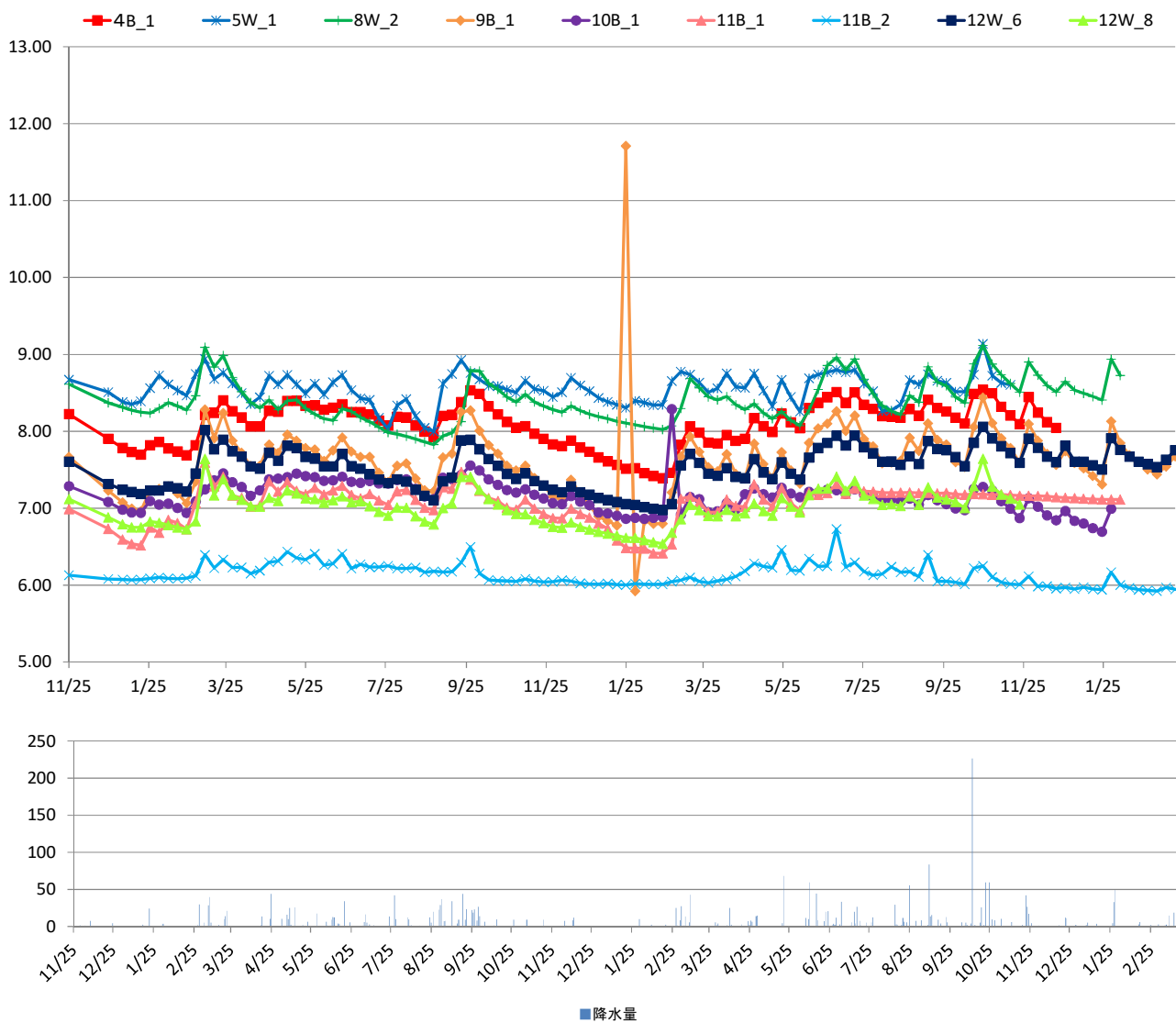
1 2丁目水位 (T.P+m)



1 2丁目沈下 (G.L-cm)



对策範囲外水位 (T,P+m)



[地下水位]		4丁目(民地部)			
事業区域名	計測地点名				
計測地点地盤高 (T.P.m)	4F 1		4F 2		
計測日	地下水位 (T.P.m)	地下水位 (G.L.m)	地下水位 (T.P.m)	地下水位 (G.L.m)	
2017/11/25 12:00	8.40	-0.736	8.13	-1.127	
2017/12/25 12:00	7.91	-1.231	7.90	-1.256	
2018/1/5 12:00	7.78	-1.363	7.80	-1.457	
2018/1/12 12:00	7.75	-1.391	7.76	-1.495	
2018/1/19 12:00	7.76	-1.376	7.78	-1.484	
2018/1/26 12:00	8.34	-0.797	7.84	-1.425	
2018/2/2 12:00	8.45	-0.687	7.78	-1.480	
2018/2/9 12:00	8.34	-0.803	7.81	-1.449	
2018/2/16 12:00	8.34	-0.801	7.85	-1.407	
2018/2/23 12:00	7.81	-1.329	7.83	-1.433	
2018/3/2 12:00	8.42	-0.723	7.92	-1.339	
2018/3/9 12:00	8.65	-0.495	8.05	-1.208	
2018/3/16 12:00	8.50	-0.642	8.24	-1.016	
2018/3/23 12:00	8.58	-0.562	8.30	-0.960	
2018/3/30 12:00	8.48	-0.657	8.23	-1.034	
2018/4/6 12:00	8.42	-0.716	8.22	-1.042	
2018/4/13 12:00	8.40	-0.737	8.10	-1.158	
2018/4/20 12:00	8.42	-0.723	8.09	-1.166	
2018/4/27 12:00	8.47	-0.671	8.16	-1.100	
2018/5/4 12:00	8.47	-0.673	8.20	-1.058	
2018/5/11 12:00	8.52	-0.624	8.23	-1.029	
2018/5/18 12:00	8.51	-0.627	8.33	-0.932	
2018/5/25 12:00	8.49	-0.647	8.27	-0.993	
2018/6/1 12:00	8.49	-0.654	8.22	-1.038	
2018/6/8 12:00	8.45	-0.686	8.19	-1.073	
2018/6/15 12:00	8.45	-0.689	8.12	-1.138	
2018/6/22 12:00	8.45	-0.691	8.11	-1.155	
2018/6/29 12:00	8.40	-0.744	8.05	-1.205	
2018/7/6 12:00	8.53	-0.605	8.00	-1.263	
2018/7/13 12:00	8.39	-0.752	8.00	-1.262	
2018/7/20 12:00	8.03	-1.105	7.94	-1.318	
2018/7/27 12:00	7.97	-1.174	7.91	-1.354	
2018/8/3 12:00	8.05	-1.088	7.86	-1.396	
2018/8/10 12:00	8.37	-0.773	7.80	-1.462	
2018/8/17 12:00	7.87	-1.274	7.72	-1.537	
2018/8/24 12:00	7.83	-1.307	7.67	-1.591	
2018/8/31 12:00	7.80	-1.336	7.63	-1.631	
2018/9/7 12:00	8.38	-0.755	7.77	-1.494	
2018/9/14 12:00	8.42	-0.721	7.80	-1.462	
2018/9/21 12:00	8.60	-0.543	7.89	-1.374	
2018/9/28 12:00	8.55	-0.591	8.09	-1.175	
2018/10/5 12:00	8.47	-0.669	8.10	-1.162	
2018/10/12 12:00	8.42	-0.724	8.03	-1.232	
2018/10/19 12:00	8.38	-0.761	7.92	-1.341	
2018/10/26 12:00	8.37	-0.769	7.83	-1.432	
2018/11/2 12:00	7.80	-1.336	7.75	-1.509	
2018/11/9 12:00	8.37	-0.766	7.76	-1.495	
2018/11/16 12:00	7.88	-1.264	7.71	-1.555	
2018/11/23 12:00	7.83	-1.313	7.68	-1.578	
2018/11/30 12:00	7.77	-1.368	7.63	-1.628	
2018/12/7 12:00	7.80	-1.339	7.64	-1.622	
2018/12/14 12:00	8.40	-0.741	7.61	-1.646	
2018/12/21 12:00	7.67	-1.469	7.57	-1.694	
2018/12/28 12:00	7.72	-1.424	7.58	-1.681	
2019/1/4 12:00	7.63	-1.515	7.50	-1.761	
2019/1/11 12:00	7.66	-1.485	7.51	-1.747	
2019/1/18 12:00	7.64	-1.496	7.48	-1.782	
2019/1/25 12:00	7.61	-1.532	7.44	-1.815	
2019/2/1 12:00	8.45	-0.693	7.46	-1.797	
2019/2/8 12:00	7.62	-1.522	7.43	-1.826	
2019/2/15 12:00	7.58	-1.556	7.38	-1.885	
2019/2/22 12:00	8.40	-0.732	7.38	-1.885	
2019/2/29 12:00	8.55	-0.595	7.40	-1.857	
2019/3/8 12:00	8.52	-0.619	7.53	-1.732	
2019/3/15 12:00	8.47	-0.671	7.74	-1.519	
2019/3/22 12:00	8.42	-0.719	7.84	-1.416	
2019/3/29 12:00	7.77	-1.366	7.69	-1.566	
2019/4/5 12:00	8.43	-0.708	7.71	-1.551	
2019/4/12 12:00	8.53	-0.608	7.64	-1.616	
2019/4/19 12:00	7.83	-1.312	7.66	-1.604	
2019/4/26 12:00	8.49	-0.654	7.66	-1.596	
2019/5/3 12:00	8.54	-0.598	7.66	-1.603	
2019/5/10 12:00	8.00	-1.143	7.69	-1.573	
2019/5/17 12:00	7.78	-1.357	7.62	-1.640	
2019/5/24 12:00	8.49	-0.652	7.73	-1.533	
2019/5/31 12:00	7.99	-1.146	7.71	-1.548	
2019/6/7 12:00	7.86	-1.280	7.67	-1.592	
2019/6/14 12:00	8.47	-0.666	7.80	-1.462	
2019/6/21 12:00	8.53	-0.613	7.93	-1.327	
2019/6/28 12:00	8.56	-0.581	8.10	-1.164	
2019/7/5 12:00	8.65	-0.489	8.07	-1.188	
2019/7/12 12:00	8.50	-0.643	8.04	-1.219	
2019/7/19 12:00	8.61	-0.533	8.12	-1.138	
2019/7/26 12:00	8.46	-0.678	8.04	-1.225	
2019/8/2 12:00	8.44	-0.699	7.96	-1.304	
2019/8/9 12:00	8.00	-1.138	7.89	-1.371	
2019/8/16 12:00	8.43	-0.712	7.88	-1.378	
2019/8/23 12:00	8.22	-0.917	7.81	-1.447	
2019/8/30 12:00	8.45	-0.691	7.90	-1.357	
2019/9/6 12:00	8.26	-0.878	7.84	-1.416	
2019/9/13 12:00	8.52	-0.618	8.05	-1.211	
2019/9/20 12:00	8.47	-0.673	7.99	-1.271	
2019/9/27 12:00	8.44	-0.698	7.92	-1.343	
2019/10/4 12:00	8.02	-1.122	7.95	-1.307	
2019/10/11 12:00	7.97	-1.171	7.85	-1.409	
2019/10/18 12:00	8.59	-0.550	8.16	-1.101	
2019/10/25 12:00	8.78	-0.361	8.30	-0.956	
2019/11/1 12:00	8.60	-0.544	8.28	-0.985	
2019/11/8 12:00	8.49	-0.654	8.13	-1.131	
2019/11/15 12:00	8.44	-0.695	8.01	-1.247	
2019/11/22 12:00	7.91	-1.227	7.87	-1.394	
2019/11/29 12:00	8.53	-0.614	8.14	-1.123	
2019/12/6 12:00	8.44	-0.701	8.03	-1.230	
2019/12/13 12:00	7.96	-1.179	7.93	-1.329	
2019/12/20 12:00	7.94	-1.200	7.90	-1.360	
2019/12/27 12:00	8.03	-1.106	-	-	
2020/1/3 12:00	7.88	-1.259	-	-	
2020/1/10 12:00	7.86	-1.281	-	-	
2020/1/17 12:00	-	-	-	-	
2020/1/24 12:00	-	-	-	-	
2020/1/31 12:00	-	-	-	-	
2020/2/7 12:00	-	-	-	-	
2020/2/14 12:00	-	-	-	-	
2020/2/21 12:00	-	-	-	-	
2020/2/28 12:00	-	-	-	-	
2020/3/6 12:00	-	-	-	-	
2020/3/13 12:00	-	-	-	-	
2020/3/20 12:00	-	-	-	-	
1段階目水位	7.84	-1.30	7.84	-1.42	
2018/2/24まで					
2段階目水位	7.75	-1.39	7.75	-1.51	
2018/5/24まで					
最終水位	7.66	-1.48	7.66	-1.60	
2018/8/24まで					

[沈下量]		
事業区域名 計測地点名	4丁目(民地部)	
	4F 1	4F 2
計測日	沈下量 (cm)	沈下量 (cm)
2017/11/25 12:00	0.0	0.0
2017/12/25 12:00	0.2	0.1
2018/1/25 12:00	0.2	0.2
2018/1/12 12:00	0.3	0.2
2018/1/19 12:00	0.3	0.2
2018/1/26 12:00	0.3	0.3
2018/2/2 12:00	0.3	0.3
2018/2/9 12:00	0.3	0.3
2018/2/16 12:00	0.3	0.3
2018/2/23 12:00	0.3	0.3
2018/3/2 12:00	0.3	0.3
2018/3/9 12:00	0.3	0.3
2018/3/16 12:00	0.3	0.2
2018/3/23 12:00	0.2	0.2
2018/3/30 12:00	0.2	0.2
2018/4/6 12:00	0.2	0.2
2018/4/13 12:00	0.2	0.2
2018/4/20 12:00	0.3	0.3
2018/4/27 12:00	0.3	0.3
2018/5/4 12:00	0.2	0.2
2018/5/11 12:00	0.2	0.3
2018/5/18 12:00	0.2	0.2
2018/5/25 12:00	0.2	0.2
2018/6/1 12:00	0.2	0.2
2018/6/8 12:00	0.2	0.3
2018/6/15 12:00	0.3	0.3
2018/6/22 12:00	0.3	0.3
2018/6/29 12:00	0.3	0.3
2018/7/6 12:00	0.3	0.3
2018/7/13 12:00	0.3	0.4
2018/7/20 12:00	0.4	0.4
2018/7/27 12:00	0.4	0.4
2018/8/3 12:00	0.4	0.4
2018/8/10 12:00	0.4	0.5
2018/8/17 12:00	0.5	0.5
2018/8/24 12:00	0.5	0.6
2018/8/31 12:00	0.5	0.6
2018/9/7 12:00	0.5	0.6
2018/9/14 12:00	0.5	0.6
2018/9/21 12:00	0.5	0.6
2018/9/28 12:00	0.5	0.5
2018/10/5 12:00	0.5	0.5
2018/10/12 12:00	0.5	0.5
2018/10/19 12:00	0.5	0.5
2018/10/26 12:00	0.5	0.5
2018/11/2 12:00	0.6	0.6
2018/11/9 12:00	0.6	0.6
2018/11/16 12:00	0.6	0.6
2018/11/23 12:00	0.6	0.6
2018/11/30 12:00	0.7	0.7
2018/12/7 12:00	0.7	0.7
2018/12/14 12:00	0.7	0.7
2018/12/21 12:00	0.7	0.7
2018/12/28 12:00	0.7	0.8
2019/1/4 12:00	0.8	0.8
2019/1/11 12:00	0.8	0.8
2019/1/18 12:00	0.8	0.9
2019/1/25 12:00	0.8	0.9
2019/2/1 12:00	0.9	0.9
2019/2/8 12:00	0.9	1.0
2019/2/15 12:00	0.9	1.0
2019/2/22 12:00	0.9	1.0
2019/3/1 12:00	0.9	1.1
2019/3/8 12:00	0.9	1.0
2019/3/15 12:00	0.9	1.0
2019/3/22 12:00	0.8	0.9
2019/3/29 12:00	0.9	1.0
2019/4/5 12:00	0.9	1.0
2019/4/12 12:00	0.9	1.0
2019/4/19 12:00	0.9	1.0
2019/4/26 12:00	0.9	1.0
2019/5/3 12:00	0.9	1.0
2019/5/10 12:00	0.9	1.0
2019/5/17 12:00	0.9	1.0
2019/5/24 12:00	0.8	1.0
2019/5/31 12:00	0.9	1.0
2019/6/7 12:00	0.9	1.0
2019/6/14 12:00	0.9	1.0
2019/6/21 12:00	0.8	1.0
2019/6/28 12:00	0.8	0.9
2019/7/5 12:00	0.8	0.9
2019/7/12 12:00	0.8	0.9
2019/7/19 12:00	0.8	0.9
2019/7/26 12:00	0.8	0.9
2019/8/2 12:00	0.8	1.0
2019/8/9 12:00	0.8	1.0
2019/8/16 12:00	0.8	1.0
2019/8/23 12:00	0.9	1.0
2019/8/30 12:00	0.9	1.0
2019/9/6 12:00	0.9	1.1
2019/9/13 12:00	0.9	1.0
2019/9/20 12:00	0.9	1.0
2019/9/27 12:00	0.9	1.0
2019/10/4 12:00	0.9	1.0
2019/10/11 12:00	0.9	1.1
2019/10/18 12:00	0.9	1.0
2019/10/25 12:00	0.8	1.0
2019/11/1 12:00	0.8	0.9
2019/11/8 12:00	0.8	1.0
2019/11/15 12:00	0.8	1.0
2019/11/22 12:00	0.9	1.1
2019/11/29 12:00	0.9	1.0
2019/12/6 12:00	0.9	1.0
2019/12/13 12:00	0.9	1.0
2019/12/20 12:00	0.9	1.1
2019/12/27 12:00	0.9	-
2020/1/3 12:00	0.9	-
2020/1/10 12:00	1.0	-
2020/1/17 12:00	-	-
2020/1/24 12:00	-	-
2020/1/31 12:00	-	-
2020/2/7 12:00	-	-
2020/2/14 12:00	-	-
2020/2/21 12:00	-	-
2020/2/28 12:00	-	-
2020/3/6 12:00	-	-
2020/3/13 12:00	-	-
2020/3/20 12:00	-	-

[沈下量]		4丁目(道路部)					
事業区域名	4E 1	4E 2	4E 3	4E 4	4E 5	4D 1(ポンプ部)	
計測地点名	沈下量 (cm)	沈下量 (cm)	沈下量 (cm)	沈下量 (cm)	沈下量 (cm)	沈下量 (cm)	
2017/11/25 12:00	0.0	0.0	0.0	0.0	0.0	0.0	
2017/12/25 12:00	0.1	0.2	0.2	0.1	0.2	0.2	
2018/1/25 12:00	0.2	0.3	0.2	0.2	0.2	0.2	
2018/1/12 12:00	0.2	0.3	0.3	0.2	0.2	0.2	
2018/1/19 12:00	0.2	0.3	0.3	0.2	0.3	0.2	
2018/1/26 12:00	0.3	0.3	0.3	0.2	0.3	0.2	
2018/2/2 12:00	0.3	0.4	0.3	0.3	0.3	0.2	
2018/2/9 12:00	0.3	0.4	0.3	0.3	0.3	0.2	
2018/2/16 12:00	0.3	0.4	0.3	0.3	0.3	0.2	
2018/2/23 12:00	0.3	0.4	0.3	0.3	0.3	0.3	
2018/3/2 12:00	0.3	0.4	0.3	0.3	0.3	0.2	
2018/3/9 12:00	0.3	0.4	0.3	0.3	0.3	0.2	
2018/3/16 12:00	0.2	0.4	0.3	0.2	0.2	0.2	
2018/3/23 12:00	0.2	0.4	0.2	0.2	0.2	0.1	
2018/3/30 12:00	0.2	0.4	0.2	0.2	0.2	0.2	
2018/4/6 12:00	0.2	0.4	0.2	0.2	0.2	0.1	
2018/4/13 12:00	0.2	0.4	0.2	0.2	0.2	0.2	
2018/4/20 12:00	0.3	0.5	0.3	0.2	0.2	0.2	
2018/4/27 12:00	0.3	0.5	0.2	0.2	0.2	0.2	
2018/5/4 12:00	0.3	0.5	0.2	0.2	0.2	0.2	
2018/5/11 12:00	0.3	0.5	0.2	0.2	0.2	0.2	
2018/5/18 12:00	0.2	0.5	0.2	0.2	0.2	0.1	
2018/5/25 12:00	0.3	0.5	0.2	0.2	0.2	0.1	
2018/6/1 12:00	0.3	0.6	0.2	0.2	0.2	0.2	
2018/6/8 12:00	0.3	0.6	0.2	0.2	0.2	0.2	
2018/6/15 12:00	0.3	0.7	0.3	0.2	0.2	0.2	
2018/6/22 12:00	0.3	0.7	0.3	0.2	0.2	0.2	
2018/6/29 12:00	0.3	0.8	0.3	0.3	0.3	0.2	
2018/7/6 12:00	0.4	0.8	0.3	0.3	0.3	0.3	
2018/7/13 12:00	0.4	0.9	0.3	0.3	0.3	0.2	
2018/7/20 12:00	0.5	0.9	0.4	0.3	0.3	0.3	
2018/7/27 12:00	0.5	0.9	0.4	0.4	0.3	0.3	
2018/8/3 12:00	0.5	1.0	0.5	0.4	0.4	0.4	
2018/8/10 12:00	0.5	1.0	0.5	0.4	0.4	0.4	
2018/8/17 12:00	0.6	1.0	0.5	0.4	0.5	0.4	
2018/8/24 12:00	0.6	1.1	0.6	0.5	0.5	0.4	
2018/8/31 12:00	0.6	1.1	0.6	0.5	0.5	0.5	
2018/9/7 12:00	0.6	1.1	0.6	0.5	0.5	0.5	
2018/9/14 12:00	0.6	1.1	0.6	0.5	0.5	0.5	
2018/9/21 12:00	0.6	1.1	0.6	0.5	0.5	0.5	
2018/9/28 12:00	0.5	1.1	0.6	0.4	0.5	0.4	
2018/10/5 12:00	0.5	1.1	0.6	0.4	0.5	0.5	
2018/10/12 12:00	0.5	1.1	0.6	0.4	0.5	0.4	
2018/10/19 12:00	0.5	1.1	0.6	0.4	0.5	0.4	
2018/10/26 12:00	0.5	1.1	0.6	0.5	0.5	0.5	
2018/11/2 12:00	0.5	1.2	0.6	0.5	0.5	0.5	
2018/11/9 12:00	0.6	1.2	0.7	0.5	0.5	0.5	
2018/11/16 12:00	0.6	1.2	0.7	0.5	0.5	0.5	
2018/11/23 12:00	0.6	1.2	0.7	0.5	0.6	0.5	
2018/11/30 12:00	0.6	1.2	0.7	0.5	0.6	0.6	
2018/12/7 12:00	0.6	1.2	0.7	0.6	0.6	0.5	
2018/12/14 12:00	0.7	1.3	0.7	0.6	0.6	0.6	
2018/12/21 12:00	0.7	1.3	0.8	0.6	0.6	0.6	
2018/12/28 12:00	0.7	1.3	0.8	0.6	0.6	0.6	
2019/1/4 12:00	0.7	1.3	0.8	0.6	0.7	0.6	
2019/1/11 12:00	0.7	1.3	0.8	0.6	0.7	0.6	
2019/1/18 12:00	0.7	1.3	0.9	0.7	0.7	0.7	
2019/1/25 12:00	0.8	1.3	0.9	0.7	0.7	0.7	
2019/2/1 12:00	0.8	1.4	0.9	0.7	0.8	0.7	
2019/2/8 12:00	0.8	1.4	0.9	0.7	0.8	0.7	
2019/2/15 12:00	0.9	1.4	1.0	0.8	0.8	0.7	
2019/2/22 12:00	0.9	1.4	1.0	0.8	0.8	0.7	
2019/3/1 12:00	0.9	1.4	1.0	0.8	0.8	0.7	
2019/3/8 12:00	0.8	1.4	1.0	0.8	0.8	0.7	
2019/3/15 12:00	0.8	1.4	0.9	0.7	0.7	0.7	
2019/3/22 12:00	0.7	1.4	0.9	0.7	0.7	0.6	
2019/3/29 12:00	0.8	1.4	0.9	0.7	0.7	0.7	
2019/4/5 12:00	0.8	1.4	0.9	0.7	0.7	0.7	
2019/4/12 12:00	0.8	1.4	0.9	0.7	0.7	0.7	
2019/4/19 12:00	0.8	1.4	0.9	0.7	0.8	0.7	
2019/4/26 12:00	0.8	1.4	0.9	0.7	0.8	0.7	
2019/5/3 12:00	0.6	1.4	0.9	0.7	0.7	0.7	
2019/5/10 12:00	0.8	1.4	0.9	0.7	0.7	0.7	
2019/5/17 12:00	0.8	1.4	0.9	0.7	0.8	0.7	
2019/5/24 12:00	0.8	1.4	0.9	0.7	0.7	0.7	
2019/5/31 12:00	0.8	1.4	0.9	0.7	0.7	0.7	
2019/6/7 12:00	0.9	1.5	0.9	0.7	0.7	0.7	
2019/6/14 12:00	0.8	1.5	0.9	0.7	0.7	0.7	
2019/6/21 12:00	0.8	1.5	0.8	0.7	0.7	0.7	
2019/6/28 12:00	0.8	1.5	0.8	0.6	0.7	0.6	
2019/7/5 12:00	0.8	1.5	0.8	0.6	0.7	0.6	
2019/7/12 12:00	0.8	1.5	0.8	0.7	0.7	0.7	
2019/7/19 12:00	0.8	1.5	0.8	0.6	0.7	0.6	
2019/7/26 12:00	0.6	1.5	0.8	0.7	0.7	0.7	
2019/8/2 12:00	0.8	1.6	0.9	0.7	0.7	0.7	
2019/8/9 12:00	0.8	1.6	0.9	0.7	0.7	0.7	
2019/8/16 12:00	0.9	1.6	0.9	0.7	0.7	0.7	
2019/8/23 12:00	0.9	1.6	0.9	0.7	0.8	0.7	
2019/8/30 12:00	0.9	1.7	0.9	0.7	0.8	0.7	
2019/9/6 12:00	0.9	1.7	0.9	0.6	0.8	0.7	
2019/9/13 12:00	0.8	1.7	0.9	0.7	0.7	0.7	
2019/9/20 12:00	0.8	1.7	0.9	0.7	0.8	0.7	
2019/9/27 12:00	0.9	1.7	1.0	0.8	0.8	0.8	
2019/10/4 12:00	0.9	1.7	0.9	0.7	0.8	0.7	
2019/10/11 12:00	0.9	1.8	1.0	0.8	0.8	0.8	
2019/10/18 12:00	0.8	1.8	0.9	0.7	0.8	0.7	
2019/10/25 12:00	0.8	1.8	0.9	0.7	0.7	0.7	
2019/11/1 12:00	0.7	1.8	0.8	0.6	0.7	0.7	
2019/11/8 12:00	0.8	1.9	0.9	0.7	0.7	0.7	
2019/11/15 12:00	0.8	1.9	0.9	0.7	0.7	0.7	
2019/11/22 12:00	0.8	1.9	0.9	0.7	0.8	0.6	
2019/11/29 12:00	0.8	2.0	0.9	0.7	0.7	0.7	
2019/12/6 12:00	0.8	2.0	0.9	0.7	0.7	0.7	
2019/12/13 12:00	0.8	2.0	0.9	0.7	0.7	0.7	
2019/12/20 12:00	0.8	2.0	0.9	0.7	0.8	0.7	
2019/12/27 12:00	-	2.0	0.9	0.7	-	0.7	
2020/1/3 12:00	-	2.0	1.0	0.7	-	0.8	
2020/1/10 12:00	-	2.1	1.0	0.7	-	0.8	
2020/1/17 12:00	-	2.1	1.0	0.8	-	0.8	
2020/1/24 12:00	-	2.1	1.0	0.8	-	0.8	
2020/1/31 12:00	-	2.1	1.0	0.7	-	0.8	
2020/2/7 12:00	-	2.1	1.0	0.8	-	0.8	
2020/2/14 12:00	-	2.2	1.0	0.8	-	0.8	
2020/2/21 12:00	-	2.2	1.0	0.8	-	0.8	
2020/2/28 12:00	-	2.2	1.0	0.8	-	0.8	
2020/3/6 12:00	-	2.2	1.0	0.8	-	0.8	
2020/3/13 12:00	-	2.2	1.1	0.8	-	0.8	
2020/3/20 12:00	-	2.3	1.0	0.8	-	0.8	

[地下水位]		6丁目(民地部)			
事業区域名	計測地点名				
計測地点名	6F.1		6F.2		
計測地点地盤高 (T.P.m)	9.36		9.37		
計測日	地下水位 (T.P.m)	地下水位 (G.Lm)	地下水位 (T.P.m)	地下水位 (G.Lm)	
2017/11/25 12:00	7.53	-1.832	7.55	-1.818	
2017/12/25 12:00	7.41	-2.221	7.29	-2.093	
2018/1/5 12:00	7.04	-2.322	7.20	-2.170	
2018/1/12 12:00	6.99	-2.368	7.17	-2.201	
2018/1/19 12:00	7.01	-2.347	7.15	-2.220	
2018/1/26 12:00	7.08	-2.283	7.19	-2.182	
2018/2/2 12:00	7.03	-2.332	7.17	-2.201	
2018/2/9 12:00	7.05	-2.308	7.22	-2.151	
2018/2/16 12:00	7.12	-2.240	7.24	-2.133	
2018/2/23 12:00	7.12	-2.239	7.20	-2.165	
2018/3/2 12:00	7.18	-2.183	7.27	-2.101	
2018/3/9 12:00	7.32	-2.038	7.76	-1.812	
2018/3/16 12:00	7.56	-1.804	7.73	-1.840	
2018/3/23 12:00	7.59	-1.771	7.80	-1.868	
2018/3/30 12:00	7.54	-1.824	7.89	-1.882	
2018/4/6 12:00	7.53	-1.832	7.80	-1.775	
2018/4/13 12:00	7.40	-1.963	7.51	-1.862	
2018/4/20 12:00	7.40	-1.964	7.49	-1.885	
2018/4/27 12:00	7.43	-1.926	7.61	-1.758	
2018/5/4 12:00	7.48	-1.877	7.66	-1.710	
2018/5/11 12:00	7.48	-1.875	7.76	-1.608	
2018/5/18 12:00	7.58	-1.778	7.83	-1.537	
2018/5/25 12:00	7.54	-1.819	7.69	-1.678	
2018/6/1 12:00	7.47	-1.894	7.65	-1.723	
2018/6/8 12:00	7.43	-1.834	7.60	-1.772	
2018/6/15 12:00	7.34	-2.023	7.83	-1.744	
2018/6/22 12:00	7.29	-2.072	7.81	-1.700	
2018/6/29 12:00	7.23	-2.133	7.62	-1.749	
2018/7/6 12:00	7.19	-2.168	7.53	-1.840	
2018/7/13 12:00	7.23	-2.129	7.54	-1.833	
2018/7/20 12:00	7.19	-2.168	7.47	-1.898	
2018/7/27 12:00	7.17	-2.188	7.42	-1.951	
2018/8/3 12:00	7.15	-2.213	7.56	-1.809	
2018/8/10 12:00	7.11	-2.253	7.51	-1.856	
2018/8/17 12:00	7.06	-2.297	7.45	-1.922	
2018/8/24 12:00	7.04	-2.321	7.36	-2.014	
2018/8/31 12:00	6.99	-2.372	7.30	-2.069	
2018/9/7 12:00	7.01	-2.341	7.68	-1.866	
2018/9/14 12:00	7.00	-2.356	7.70	-1.873	
2018/9/21 12:00	7.06	-2.298	7.77	-1.598	
2018/9/28 12:00	7.25	-2.110	8.06	-1.306	
2018/10/5 12:00	7.38	-1.976	7.84	-1.525	
2018/10/12 12:00	7.34	-2.020	7.61	-1.759	
2018/10/19 12:00	7.24	-2.121	7.50	-1.867	
2018/10/26 12:00	7.15	-2.208	7.41	-1.956	
2018/11/2 12:00	7.05	-2.314	7.36	-2.011	
2018/11/9 12:00	7.03	-2.335	7.37	-2.002	
2018/11/16 12:00	6.90	-2.457	7.33	-2.040	
2018/11/23 12:00	6.83	-2.527	7.28	-2.085	
2018/11/30 12:00	6.81	-2.553	7.22	-2.151	
2018/12/7 12:00	6.83	-2.534	7.19	-2.183	
2018/12/14 12:00	6.85	-2.514	7.20	-2.171	
2018/12/21 12:00	6.82	-2.542	7.21	-2.157	
2018/12/28 12:00	6.84	-2.519	7.19	-2.176	
2019/1/4 12:00	6.82	-2.542	7.11	-2.265	
2019/1/11 12:00	6.84	-2.519	7.08	-2.288	
2019/1/18 12:00	6.84	-2.515	7.05	-2.324	
2019/1/25 12:00	6.85	-2.510	7.00	-2.370	
2019/2/1 12:00	6.86	-2.503	6.98	-2.386	
2019/2/8 12:00	6.86	-2.504	6.96	-2.415	
2019/2/15 12:00	6.86	-2.505	6.90	-2.465	
2019/2/22 12:00	6.86	-2.503	6.90	-2.473	
2019/3/1 12:00	6.86	-2.503	6.90	-2.469	
2019/3/8 12:00	6.85	-2.508	7.28	-2.086	
2019/3/15 12:00	6.76	-2.599	7.41	-1.961	
2019/3/22 12:00	6.94	-2.422	7.32	-2.050	
2019/3/29 12:00	6.83	-2.534	7.18	-2.195	
2019/4/5 12:00	6.86	-2.501	7.15	-2.219	
2019/4/12 12:00	6.77	-2.586	7.15	-2.225	
2019/4/19 12:00	6.79	-2.570	7.20	-2.174	
2019/4/26 12:00	6.78	-2.578	7.18	-2.191	
2019/5/3 12:00	6.79	-2.568	7.32	-2.048	
2019/5/10 12:00	6.83	-2.532	7.32	-2.053	
2019/5/17 12:00	6.81	-2.553	7.21	-2.161	
2019/5/24 12:00	6.86	-2.499	7.45	-1.816	
2019/5/31 12:00	6.84	-2.516	7.37	-2.003	
2019/6/7 12:00	6.84	-2.516	7.28	-2.092	
2019/6/14 12:00	6.87	-2.491	7.59	-1.778	
2019/6/21 12:00	6.95	-2.411	7.60	-1.774	
2019/6/28 12:00	7.15	-2.212	7.73	-1.644	
2019/7/5 12:00	7.12	-2.238	7.71	-1.664	
2019/7/12 12:00	7.13	-2.233	7.55	-1.819	
2019/7/19 12:00	7.15	-2.209	7.75	-1.617	
2019/7/26 12:00	7.09	-2.268	7.53	-1.844	
2019/8/2 12:00	7.02	-2.338	7.44	-1.935	
2019/8/9 12:00	6.98	-2.385	7.35	-2.020	
2019/8/16 12:00	6.86	-2.400	7.34	-2.035	
2019/8/23 12:00	6.88	-2.477	7.34	-2.031	
2019/8/30 12:00	7.15	-2.211	7.54	-1.829	
2019/9/6 12:00	6.93	-2.428	7.41	-1.958	
2019/9/13 12:00	7.02	-2.344	7.76	-1.609	
2019/9/20 12:00	7.00	-2.364	7.52	-1.854	
2019/9/27 12:00	6.94	-2.422	7.46	-1.912	
2019/10/4 12:00	6.96	-2.401	7.37	-2.003	
2019/10/11 12:00	6.85	-2.507	7.30	-2.066	
2019/10/18 12:00	7.17	-2.192	7.67	-1.700	
2019/10/25 12:00	7.29	-2.067	7.87	-1.505	
2019/11/1 12:00	7.25	-2.115	7.73	-1.643	
2019/11/8 12:00	7.08	-2.283	7.48	-1.887	
2019/11/15 12:00	6.96	-2.399	7.35	-2.018	
2019/11/22 12:00	6.83	-2.532	7.22	-2.149	
2019/11/29 12:00	7.08	-2.276	7.69	-1.677	
2019/12/6 12:00	6.98	-2.375	7.45	-1.825	
2019/12/13 12:00	6.86	-2.498	7.30	-2.066	
2019/12/20 12:00	6.85	-2.511	7.22	-2.147	
2019/12/27 12:00	-	-	-	-	
2020/1/3 12:00	-	-	-	-	
2020/1/10 12:00	-	-	-	-	
2020/1/17 12:00	-	-	-	-	
2020/1/24 12:00	-	-	-	-	
2020/1/31 12:00	-	-	-	-	
2020/2/7 12:00	-	-	-	-	
2020/2/14 12:00	-	-	-	-	
2020/2/21 12:00	-	-	-	-	
2020/2/28 12:00	-	-	-	-	
2020/3/6 12:00	-	-	-	-	
2020/3/13 12:00	-	-	-	-	
2020/3/20 12:00	-	-	-	-	
1段階目水位					
2018/2/24まで	7.10	-2.26	7.10	-2.27	
2段階目水位					
2018/5/24まで	6.90	-2.46	6.90	-2.47	
最終水位					
2018/8/24まで	6.70	-2.66	6.70	-2.67	

[沈下量]

事業区域名 計測地点名 計測日	6丁目(民地部)	
	6F 1 沈下量 (cm)	6F 2 沈下量 (cm)
2017/11/25 12:00	0.0	0.0
2017/12/25 12:00	0.1	0.1
2018/1/25 12:00	0.1	0.2
2018/1/12 12:00	0.1	0.2
2018/1/19 12:00	0.2	0.2
2018/1/26 12:00	0.2	0.3
2018/2/2 12:00	0.2	0.3
2018/2/9 12:00	0.2	0.3
2018/2/16 12:00	0.2	0.3
2018/2/23 12:00	0.2	0.3
2018/3/2 12:00	0.2	0.3
2018/3/9 12:00	0.2	0.3
2018/3/16 12:00	0.2	0.3
2018/3/23 12:00	0.1	0.2
2018/3/30 12:00	0.2	0.2
2018/4/6 12:00	0.1	0.2
2018/4/13 12:00	0.2	0.3
2018/4/20 12:00	0.2	0.3
2018/4/27 12:00	0.2	0.3
2018/5/4 12:00	0.1	0.2
2018/5/11 12:00	0.2	0.2
2018/5/18 12:00	0.1	0.2
2018/5/25 12:00	0.1	0.2
2018/6/1 12:00	0.1	0.2
2018/6/8 12:00	0.1	0.2
2018/6/15 12:00	0.1	0.3
2018/6/22 12:00	0.2	0.3
2018/6/29 12:00	0.2	0.3
2018/7/6 12:00	0.2	0.3
2018/7/13 12:00	0.2	0.3
2018/7/20 12:00	0.2	0.3
2018/7/27 12:00	0.2	0.4
2018/8/3 12:00	0.2	0.3
2018/8/10 12:00	0.2	0.4
2018/8/17 12:00	0.2	0.4
2018/8/24 12:00	0.2	0.4
2018/8/31 12:00	0.3	0.5
2018/9/7 12:00	0.3	0.4
2018/9/14 12:00	0.3	0.5
2018/9/21 12:00	0.3	0.5
2018/9/28 12:00	0.3	0.4
2018/10/5 12:00	0.3	0.4
2018/10/12 12:00	0.3	0.4
2018/10/19 12:00	0.3	0.5
2018/10/26 12:00	0.3	0.5
2018/11/2 12:00	0.3	0.5
2018/11/9 12:00	0.3	0.6
2018/11/16 12:00	0.3	0.6
2018/11/23 12:00	0.4	0.6
2018/11/30 12:00	0.4	0.6
2018/12/7 12:00	0.4	0.6
2018/12/14 12:00	0.4	0.7
2018/12/21 12:00	0.4	0.7
2018/12/28 12:00	0.4	0.7
2019/1/4 12:00	0.4	0.7
2019/1/11 12:00	0.4	0.7
2019/1/18 12:00	0.4	0.8
2019/1/25 12:00	0.4	0.8
2019/2/1 12:00	0.5	0.8
2019/2/8 12:00	0.5	0.8
2019/2/15 12:00	0.5	0.9
2019/2/22 12:00	0.5	0.9
2019/3/1 12:00	0.5	0.9
2019/3/8 12:00	0.5	0.9
2019/3/15 12:00	0.5	0.9
2019/3/22 12:00	0.5	0.8
2019/3/29 12:00	0.5	0.9
2019/4/5 12:00	0.5	0.9
2019/4/12 12:00	0.5	0.9
2019/4/19 12:00	0.5	0.9
2019/4/26 12:00	0.5	0.9
2019/5/3 12:00	0.5	0.9
2019/5/10 12:00	0.4	0.8
2019/5/17 12:00	0.4	0.9
2019/5/24 12:00	0.4	0.8
2019/5/31 12:00	0.4	0.8
2019/6/7 12:00	0.4	0.8
2019/6/14 12:00	0.4	0.8
2019/6/21 12:00	0.4	0.8
2019/6/28 12:00	0.4	0.8
2019/7/5 12:00	0.4	0.8
2019/7/12 12:00	0.4	0.8
2019/7/19 12:00	0.4	0.8
2019/7/26 12:00	0.4	0.8
2019/8/2 12:00	0.4	0.8
2019/8/9 12:00	0.4	0.8
2019/8/16 12:00	0.4	0.8
2019/8/23 12:00	0.4	0.9
2019/8/30 12:00	0.4	0.9
2019/9/6 12:00	0.5	0.9
2019/9/13 12:00	0.5	0.9
2019/9/20 12:00	0.5	0.9
2019/9/27 12:00	0.5	0.9
2019/10/4 12:00	0.5	0.9
2019/10/11 12:00	0.5	0.9
2019/10/18 12:00	0.4	0.9
2019/10/25 12:00	0.4	0.8
2019/11/1 12:00	0.4	0.8
2019/11/8 12:00	0.4	0.8
2019/11/15 12:00	0.4	0.9
2019/11/22 12:00	0.5	0.9
2019/11/29 12:00	0.4	0.8
2019/12/6 12:00	0.4	0.9
2019/12/13 12:00	0.4	0.9
2019/12/20 12:00	0.5	0.9
2019/12/27 12:00	-	-
2020/1/3 12:00	-	-
2020/1/10 12:00	-	-
2020/1/17 12:00	-	-
2020/1/24 12:00	-	-
2020/1/31 12:00	-	-
2020/2/7 12:00	-	-
2020/2/14 12:00	-	-
2020/2/21 12:00	-	-
2020/2/28 12:00	-	-
2020/3/6 12:00	-	-
2020/3/13 12:00	-	-
2020/3/20 12:00	-	-

[沈下量]		6丁目(道路部)				
事業区域名	6E 1	6E 2	6E 3	6E 4	6D 1(ホンゾ部)	
計測地点名	沈下量 (cm)	沈下量 (cm)	沈下量 (cm)	沈下量 (cm)	沈下量 (cm)	
計測日						
2017/11/25 12:00	0.0	0.0	0.0	0.0	0.0	
2017/12/25 12:00	0.1	0.1	0.2	0.2	0.1	
2018/1/25 12:00	0.1	0.1	0.3	0.2	0.2	
2018/1/12 12:00	0.1	0.1	0.3	0.3	0.2	
2018/1/19 12:00	0.2	0.2	0.4	0.3	0.2	
2018/1/26 12:00	0.2	0.2	0.4	0.3	0.2	
2018/2/2 12:00	0.2	0.2	0.4	0.3	0.2	
2018/2/9 12:00	0.2	0.2	0.4	0.3	0.3	
2018/2/16 12:00	0.2	0.2	0.4	0.3	0.2	
2018/2/23 12:00	0.2	0.2	0.5	0.3	0.3	
2018/3/2 12:00	0.2	0.2	0.4	0.3	0.3	
2018/3/9 12:00	0.2	0.2	0.4	0.3	0.2	
2018/3/16 12:00	0.2	0.2	0.3	0.2	0.2	
2018/3/23 12:00	0.1	0.2	0.3	0.2	0.2	
2018/3/30 12:00	0.1	0.2	0.3	0.2	0.2	
2018/4/6 12:00	0.1	0.2	0.3	0.2	0.2	
2018/4/13 12:00	0.1	0.2	0.4	0.2	0.2	
2018/4/20 12:00	0.1	0.2	0.4	0.3	0.2	
2018/4/27 12:00	0.2	0.2	0.4	0.2	0.2	
2018/5/4 12:00	0.1	0.2	0.3	0.2	0.2	
2018/5/11 12:00	0.2	0.2	0.3	0.1	0.2	
2018/5/18 12:00	0.1	0.1	0.3	0.1	0.1	
2018/5/25 12:00	0.1	0.2	0.3	0.1	0.1	
2018/6/1 12:00	0.1	0.2	0.3	0.2	0.2	
2018/6/8 12:00	0.1	0.2	0.3	0.2	0.2	
2018/6/15 12:00	0.2	0.2	0.4	0.2	0.2	
2018/6/22 12:00	0.2	0.2	0.4	0.2	0.2	
2018/6/29 12:00	0.2	0.2	0.4	0.3	0.3	
2018/7/6 12:00	0.2	0.2	0.4	0.3	0.3	
2018/7/13 12:00	0.2	0.2	0.4	0.3	0.3	
2018/7/20 12:00	0.2	0.3	0.4	0.3	0.3	
2018/7/27 12:00	0.2	0.3	0.5	0.3	0.3	
2018/8/3 12:00	0.2	0.3	0.5	0.3	0.3	
2018/8/10 12:00	0.3	0.3	0.5	0.4	0.4	
2018/8/17 12:00	0.3	0.3	0.6	0.4	0.4	
2018/8/24 12:00	0.3	0.4	0.6	0.4	0.4	
2018/8/31 12:00	0.3	0.4	0.7	0.5	0.5	
2018/9/7 12:00	0.3	0.4	0.7	0.5	0.5	
2018/9/14 12:00	0.3	0.4	0.7	0.5	0.5	
2018/9/21 12:00	0.3	0.4	0.6	0.4	0.5	
2018/9/28 12:00	0.3	0.4	0.6	0.4	0.5	
2018/10/5 12:00	0.3	0.4	0.6	0.5	0.5	
2018/10/12 12:00	0.3	0.4	0.6	0.5	0.5	
2018/10/19 12:00	0.3	0.4	0.7	0.5	0.5	
2018/10/26 12:00	0.3	0.4	0.7	0.6	0.5	
2018/11/2 12:00	0.3	0.4	0.8	0.6	0.5	
2018/11/9 12:00	0.3	0.4	0.8	0.6	0.6	
2018/11/16 12:00	0.4	0.4	0.8	0.6	0.6	
2018/11/23 12:00	0.4	0.5	0.9	0.7	0.6	
2018/11/30 12:00	0.4	0.5	0.9	0.7	0.6	
2018/12/7 12:00	0.4	0.5	0.9	0.7	0.6	
2018/12/14 12:00	0.4	0.5	0.9	0.7	0.6	
2018/12/21 12:00	0.4	0.5	1.0	0.7	0.6	
2018/12/28 12:00	0.4	0.5	1.0	0.8	0.6	
2019/1/4 12:00	0.4	0.5	1.0	0.8	0.7	
2019/1/11 12:00	0.5	0.5	1.0	0.8	0.7	
2019/1/18 12:00	0.5	0.6	1.1	0.8	0.7	
2019/1/25 12:00	0.5	0.6	1.1	0.9	0.7	
2019/2/1 12:00	0.5	0.6	1.1	0.9	0.7	
2019/2/8 12:00	0.5	0.6	1.2	0.9	0.8	
2019/2/15 12:00	0.5	0.6	1.2	1.0	0.8	
2019/2/22 12:00	0.5	0.6	1.2	1.0	0.8	
2019/3/1 12:00	0.5	0.7	1.3	1.0	0.8	
2019/3/8 12:00	0.6	0.6	1.2	0.9	0.8	
2019/3/15 12:00	0.5	0.6	1.1	0.9	0.8	
2019/3/22 12:00	0.5	0.6	1.1	0.9	0.7	
2019/3/29 12:00	0.5	0.6	1.1	0.9	0.8	
2019/4/5 12:00	0.5	0.6	1.2	0.9	0.8	
2019/4/12 12:00	0.5	0.6	1.2	0.9	0.8	
2019/4/19 12:00	0.5	0.6	1.2	0.9	0.8	
2019/4/26 12:00	0.5	0.6	1.2	1.0	0.8	
2019/5/3 12:00	0.5	0.6	1.1	0.9	0.7	
2019/5/10 12:00	0.5	0.6	1.1	0.8	0.7	
2019/5/17 12:00	0.5	0.6	1.1	0.8	0.7	
2019/5/24 12:00	0.5	0.6	1.1	0.8	0.7	
2019/5/31 12:00	0.5	0.6	1.1	0.8	0.7	
2019/6/7 12:00	0.5	0.6	1.1	0.8	0.7	
2019/6/14 12:00	0.5	0.6	1.1	0.8	0.7	
2019/6/21 12:00	0.5	0.6	1.1	0.8	0.7	
2019/6/28 12:00	0.5	0.6	1.1	0.8	0.7	
2019/7/5 12:00	0.5	0.6	1.1	0.8	0.7	
2019/7/12 12:00	0.5	0.6	1.1	0.9	0.7	
2019/7/19 12:00	0.5	0.6	1.1	0.9	0.7	
2019/7/26 12:00	0.5	0.6	1.1	0.9	0.7	
2019/8/2 12:00	0.5	0.6	1.1	0.9	0.7	
2019/8/9 12:00	0.5	0.6	1.1	0.9	0.7	
2019/8/16 12:00	0.5	0.6	1.2	0.9	0.7	
2019/8/23 12:00	0.5	0.6	1.2	0.9	0.8	
2019/8/30 12:00	0.5	0.6	1.2	0.9	0.8	
2019/9/6 12:00	0.5	0.7	1.3	1.0	0.8	
2019/9/13 12:00	0.5	0.7	1.2	0.9	0.8	
2019/9/20 12:00	0.5	0.7	1.3	1.0	0.8	
2019/9/27 12:00	0.5	0.7	1.3	1.0	0.8	
2019/10/4 12:00	0.5	0.7	1.3	1.0	0.8	
2019/10/11 12:00	0.6	0.7	1.4	1.1	0.9	
2019/10/18 12:00	0.5	0.6	1.2	0.9	0.8	
2019/10/25 12:00	0.5	0.6	1.1	0.9	0.8	
2019/11/1 12:00	0.5	0.6	1.1	0.9	0.7	
2019/11/8 12:00	0.5	0.6	1.2	0.9	0.8	
2019/11/15 12:00	0.5	0.6	1.2	1.0	0.8	
2019/11/22 12:00	0.5	0.7	1.3	1.0	0.8	
2019/11/29 12:00	0.5	0.6	1.2	0.9	0.8	
2019/12/6 12:00	0.5	0.6	1.2	1.0	0.8	
2019/12/13 12:00	0.5	0.6	1.3	1.0	0.8	
2019/12/20 12:00	0.5	0.6	1.3	1.0	0.8	
2019/12/27 12:00	0.5	-	1.3	1.0	0.8	
2020/1/3 12:00	0.5	-	1.3	1.0	0.9	
2020/1/10 12:00	0.6	-	1.4	-	0.9	
2020/1/17 12:00	0.6	-	1.4	-	0.9	
2020/1/24 12:00	0.6	-	1.4	-	0.9	
2020/1/31 12:00	0.5	-	1.4	-	0.9	
2020/2/7 12:00	0.6	-	1.4	-	0.9	
2020/2/14 12:00	0.6	-	1.4	-	-	
2020/2/21 12:00	0.6	-	1.5	-	-	
2020/2/28 12:00	0.6	-	1.5	-	-	
2020/3/6 12:00	0.6	-	1.5	-	-	
2020/3/13 12:00	0.6	-	1.5	-	-	
2020/3/20 12:00	0.6	-	1.5	-	-	

[地下水位]				
事業区域名	7・12丁目(民地部)			
計測地点名	7F_1		7F_2	
計測地点地盤高(T.P.m)	9.31		8.50	
計測日	地下水位(T.P.m)	地下水位(G.L.m)	地下水位(T.P.m)	地下水位(G.L.m)
2017/11/25 12:00	7.75	-1.556	7.23	-1.286
2017/12/25 12:00	7.41	-1.896	6.78	-1.718
2018/1/5 12:00	7.31	-1.996	6.89	-1.806
2018/1/12 12:00	7.27	-2.042	6.65	-1.846
2018/1/19 12:00	7.24	-2.068	6.66	-1.844
2018/1/26 12:00	7.24	-2.071	6.70	-1.802
2018/2/2 12:00	7.17	-2.135	6.65	-1.850
2018/2/9 12:00	7.17	-2.145	6.66	-1.839
2018/2/16 12:00	7.17	-2.135	6.69	-1.814
2018/2/23 12:00	7.15	-2.164	6.65	-1.849
2018/3/2 12:00	7.20	-2.109	6.72	-1.781
2018/3/9 12:00	7.23	-2.081	6.82	-1.682
2018/3/16 12:00	7.38	-1.830	7.06	-1.442
2018/3/23 12:00	7.49	-1.625	7.20	-1.296
2018/3/30 12:00	7.51	-1.800	7.14	-1.358
2018/4/6 12:00	7.52	-1.787	7.14	-1.357
2018/4/13 12:00	7.49	-1.822	7.08	-1.419
2018/4/20 12:00	7.46	-1.850	7.08	-1.415
2018/4/27 12:00	7.49	-1.820	7.18	-1.318
2018/5/4 12:00	7.54	-1.775	7.21	-1.288
2018/5/11 12:00	7.51	-1.800	7.21	-1.293
2018/5/18 12:00	7.64	-1.668	7.29	-1.207
2018/5/25 12:00	7.65	-1.660	7.23	-1.269
2018/6/1 12:00	7.64	-1.672	7.18	-1.318
2018/6/8 12:00	7.61	-1.696	7.10	-1.397
2018/6/15 12:00	7.62	-1.684	7.10	-1.403
2018/6/22 12:00	7.62	-1.686	7.11	-1.391
2018/6/29 12:00	7.61	-1.700	7.02	-1.480
2018/7/6 12:00	7.58	-1.728	6.96	-1.537
2018/7/13 12:00	7.56	-1.751	6.98	-1.516
2018/7/20 12:00	7.55	-1.764	6.92	-1.583
2018/7/27 12:00	7.52	-1.788	6.88	-1.616
2018/8/3 12:00	7.55	-1.760	6.94	-1.565
2018/8/10 12:00	7.54	-1.766	6.85	-1.651
2018/8/17 12:00	7.50	-1.814	6.77	-1.728
2018/8/24 12:00	7.45	-1.857	6.67	-1.828
2018/8/31 12:00	7.42	-1.888	6.60	-1.898
2018/9/7 12:00	7.46	-1.841	6.80	-1.704
2018/9/14 12:00	7.46	-1.847	6.82	-1.682
2018/9/21 12:00	7.53	-1.779	6.90	-1.602
2018/9/28 12:00	7.69	-1.620	7.10	-1.401
2018/10/5 12:00	7.66	-1.450	7.05	-1.449
2018/10/12 12:00	7.64	-1.474	6.89	-1.611
2018/10/19 12:00	7.74	-1.566	6.79	-1.714
2018/10/26 12:00	7.65	-1.657	6.70	-1.798
2018/11/2 12:00	7.57	-1.744	6.62	-1.882
2018/11/9 12:00	7.52	-1.794	6.62	-1.882
2018/11/16 12:00	7.45	-1.856	6.54	-1.957
2018/11/23 12:00	7.42	-1.895	6.49	-2.008
2018/11/30 12:00	7.36	-1.941	6.43	-2.072
2018/12/7 12:00	7.34	-1.969	6.40	-2.096
2018/12/14 12:00	7.31	-2.003	6.41	-2.089
2018/12/21 12:00	7.27	-2.038	6.37	-2.132
2018/12/28 12:00	7.31	-2.003	6.33	-2.170
2019/1/4 12:00	7.30	-2.011	6.24	-2.258
2019/1/11 12:00	7.33	-1.980	6.24	-2.258
2019/1/18 12:00	7.32	-1.992	6.22	-2.282
2019/1/25 12:00	7.30	-2.006	6.18	-2.315
2019/2/1 12:00	7.31	-2.003	6.21	-2.294
2019/2/8 12:00	7.24	-2.069	6.25	-2.255
2019/2/15 12:00	7.29	-1.920	6.22	-2.284
2019/2/22 12:00	7.28	-2.030	6.23	-2.285
2019/3/1 12:00	7.35	-1.959	6.57	-2.034
2019/3/8 12:00	7.58	-1.734	3.88	-4.817
2019/3/15 12:00	7.08	-2.231	6.44	-2.061
2019/3/22 12:00	7.22	-2.094	6.54	-1.955
2019/3/29 12:00	7.18	-2.125	6.42	-2.080
2019/4/5 12:00	7.18	-2.126	6.40	-2.095
2019/4/12 12:00	7.16	-2.149	6.38	-2.124
2019/4/19 12:00	7.18	-2.135	6.42	-2.081
2019/4/26 12:00	7.18	-2.128	6.41	-2.092
2019/5/3 12:00	7.19	-2.119	6.49	-2.007
2019/5/10 12:00	7.24	-2.072	6.52	-1.979
2019/5/17 12:00	7.21	-2.095	6.45	-2.049
2019/5/24 12:00	7.29	-2.018	6.65	-1.849
2019/5/31 12:00	7.31	-1.999	6.59	-1.907
2019/6/7 12:00	7.30	-2.014	6.52	-1.978
2019/6/14 12:00	7.34	-1.965	6.70	-1.801
2019/6/21 12:00	7.48	-1.826	6.81	-1.694
2019/6/28 12:00	7.63	-1.682	6.93	-1.571
2019/7/5 12:00	7.64	-1.671	6.92	-1.576
2019/7/12 12:00	7.64	-1.674	6.80	-1.702
2019/7/19 12:00	7.71	-1.599	6.93	-1.569
2019/7/26 12:00	7.68	-1.635	6.78	-1.718
2019/8/2 12:00	7.60	-1.706	6.69	-1.805
2019/8/9 12:00	7.56	-1.755	6.61	-1.891
2019/8/16 12:00	7.54	-1.769	6.68	-1.816
2019/8/23 12:00	7.46	-1.847	6.53	-1.874
2019/8/30 12:00	7.48	-1.831	6.62	-1.883
2019/9/6 12:00	7.41	-1.899	6.54	-1.962
2019/9/13 12:00	7.51	-1.798	6.73	-1.767
2019/9/20 12:00	7.52	-1.786	6.65	-1.853
2019/9/27 12:00	7.46	-1.852	6.59	-1.910
2019/10/4 12:00	7.47	-1.841	6.55	-1.954
2019/10/11 12:00	7.39	-1.918	6.46	-2.043
2019/10/18 12:00	7.70	-1.614	7.04	-1.457
2019/10/25 12:00	7.87	-1.439	7.02	-1.480
2019/11/1 12:00	7.89	-1.418	6.89	-1.607
2019/11/8 12:00	7.73	-1.579	6.88	-1.621
2019/11/15 12:00	7.59	-1.718	6.54	-1.960
2019/11/22 12:00	7.43	-1.875	6.42	-2.084
2019/11/29 12:00	7.66	-1.647	6.71	-1.792
2019/12/6 12:00	7.58	-1.728	6.56	-1.941
2019/12/13 12:00	7.47	-1.837	6.45	-2.047
2019/12/20 12:00	7.40	-1.914	6.41	-2.088
2019/12/27 12:00	7.37	-1.938	6.46	-2.037
2020/1/3 12:00	7.25	-2.062	6.37	-2.134
2020/1/10 12:00	7.24	-2.068	6.33	-2.167
2020/1/17 12:00	7.18	-2.129	6.29	-2.214
2020/1/24 12:00	7.14	-2.172	6.26	-2.241
2020/1/31 12:00	7.24	-2.069	6.47	-2.034
2020/2/7 12:00	7.26	-2.048	6.36	-2.140
2020/2/14 12:00	7.25	-2.064	6.37	-2.132
2020/2/21 12:00	7.16	-2.154	6.26	-2.241
2020/2/28 12:00	7.16	-2.149	6.30	-2.204
2020/3/6 12:00	7.14	-2.167	6.30	-2.201
2020/3/13 12:00	7.11	-2.205	6.29	-2.212
2020/3/20 12:00	7.17	-2.144	6.42	-2.083
1段階目水位	7.19	-2.12	7.19	-1.31
2018/2/24まで				
2段階目水位	7.15	-2.17	7.15	-1.36
2018/5/24まで				
最終水位	7.10	-2.21	7.10	-1.40
2018/8/24まで				

[沈下量]

事業区域名	7・12丁目(民地部)	
	7F 1	7F 2
計測地点名	沈下量	沈下量
計測日	(cm)	(cm)
2017/11/25 12:00	0.0	0.0
2017/12/25 12:00	0.2	0.1
2018/1/25 12:00	0.2	0.1
2018/1/12 12:00	0.3	0.1
2018/1/19 12:00	0.3	0.1
2018/1/26 12:00	0.3	0.1
2018/2/2 12:00	0.4	0.2
2018/2/9 12:00	0.4	0.2
2018/2/16 12:00	0.4	0.2
2018/2/23 12:00	0.4	0.2
2018/3/2 12:00	0.4	0.2
2018/3/9 12:00	0.4	0.2
2018/3/16 12:00	0.4	0.2
2018/3/23 12:00	0.3	0.2
2018/3/30 12:00	0.4	0.2
2018/4/6 12:00	0.3	0.2
2018/4/13 12:00	0.4	0.2
2018/4/20 12:00	0.4	0.2
2018/4/27 12:00	0.4	0.2
2018/5/4 12:00	0.3	0.2
2018/5/11 12:00	0.3	0.2
2018/5/18 12:00	0.3	0.2
2018/5/25 12:00	0.3	0.2
2018/6/1 12:00	0.3	0.2
2018/6/8 12:00	0.3	0.2
2018/6/15 12:00	0.3	0.2
2018/6/22 12:00	0.3	0.2
2018/6/29 12:00	0.4	0.2
2018/7/6 12:00	0.4	0.3
2018/7/13 12:00	0.4	0.3
2018/7/20 12:00	0.4	0.3
2018/7/27 12:00	0.4	0.3
2018/8/3 12:00	0.4	0.4
2018/8/10 12:00	0.5	0.4
2018/8/17 12:00	0.5	0.4
2018/8/24 12:00	0.6	0.5
2018/8/31 12:00	0.7	0.5
2018/9/7 12:00	0.7	0.5
2018/9/14 12:00	0.7	0.5
2018/9/21 12:00	0.7	0.5
2018/9/28 12:00	0.6	0.5
2018/10/5 12:00	0.6	0.5
2018/10/12 12:00	0.6	0.5
2018/10/19 12:00	0.6	0.5
2018/10/26 12:00	0.7	0.5
2018/11/2 12:00	0.7	0.5
2018/11/9 12:00	0.7	0.5
2018/11/16 12:00	0.7	0.5
2018/11/23 12:00	0.7	0.5
2018/11/30 12:00	0.8	0.5
2018/12/7 12:00	0.8	0.6
2018/12/14 12:00	0.8	0.6
2018/12/21 12:00	0.8	0.6
2018/12/28 12:00	0.8	0.6
2019/1/4 12:00	0.9	0.6
2019/1/11 12:00	0.9	0.6
2019/1/18 12:00	0.9	0.7
2019/1/25 12:00	0.9	0.7
2019/2/1 12:00	1.0	0.7
2019/2/8 12:00	1.0	0.7
2019/2/15 12:00	1.0	0.7
2019/2/22 12:00	1.0	0.7
2019/3/1 12:00	1.1	0.8
2019/3/8 12:00	1.0	0.8
2019/3/15 12:00	1.0	0.7
2019/3/22 12:00	1.0	0.7
2019/3/29 12:00	1.0	0.7
2019/4/5 12:00	1.0	0.7
2019/4/12 12:00	1.0	0.7
2019/4/19 12:00	1.0	0.7
2019/4/26 12:00	1.0	0.8
2019/5/3 12:00	1.0	0.8
2019/5/10 12:00	0.9	0.8
2019/5/17 12:00	1.0	0.8
2019/5/24 12:00	0.9	0.8
2019/5/31 12:00	0.9	0.8
2019/6/7 12:00	0.9	0.8
2019/6/14 12:00	0.9	0.8
2019/6/21 12:00	0.9	0.8
2019/6/28 12:00	0.9	0.8
2019/7/5 12:00	0.9	0.8
2019/7/12 12:00	0.9	0.8
2019/7/19 12:00	0.9	0.8
2019/7/26 12:00	0.9	0.8
2019/8/2 12:00	0.9	0.8
2019/8/9 12:00	0.9	0.8
2019/8/16 12:00	0.9	0.8
2019/8/23 12:00	0.9	0.8
2019/8/30 12:00	0.9	0.8
2019/9/6 12:00	1.0	0.9
2019/9/13 12:00	0.9	0.9
2019/9/20 12:00	1.0	0.8
2019/9/27 12:00	1.0	0.9
2019/10/4 12:00	1.0	0.8
2019/10/11 12:00	1.0	0.9
2019/10/18 12:00	0.9	0.8
2019/10/25 12:00	0.8	0.8
2019/11/1 12:00	0.8	0.8
2019/11/8 12:00	0.9	0.8
2019/11/15 12:00	0.9	0.8
2019/11/22 12:00	1.0	0.8
2019/11/29 12:00	0.9	0.8
2019/12/6 12:00	0.9	0.8
2019/12/13 12:00	0.9	0.8
2019/12/20 12:00	1.0	0.8
2019/12/27 12:00	1.0	0.8
2020/1/3 12:00	1.0	0.8
2020/1/10 12:00	1.0	0.8
2020/1/17 12:00	1.1	0.8
2020/1/24 12:00	1.1	0.8
2020/1/31 12:00	1.1	0.8
2020/2/7 12:00	1.1	0.9
2020/2/14 12:00	1.1	0.8
2020/2/21 12:00	1.1	0.9
2020/2/28 12:00	1.1	0.9
2020/3/6 12:00	1.1	0.9
2020/3/13 12:00	1.1	0.9
2020/3/20 12:00	1.1	0.9

[沈下量]				
事業区域名 計測地点名	7・12丁目(道路部)			
	7E 1	7E 3	7E 4	7D 1(ホンプ部)
計測日	沈下量 (cm)	沈下量 (cm)	沈下量 (cm)	沈下量 (cm)
2017/11/25 12:00	0.0	0.0	0.0	0.0
2017/12/25 12:00	0.1	0.2	0.2	0.1
2018/1/25 12:00	0.1	0.2	0.3	0.1
2018/1/12 12:00	0.1	0.3	0.3	0.2
2018/1/19 12:00	0.1	0.3	0.3	0.2
2018/1/26 12:00	0.1	0.3	0.3	0.2
2018/2/2 12:00	0.1	0.4	0.4	0.2
2018/2/9 12:00	0.2	0.4	0.4	0.2
2018/2/16 12:00	0.2	0.4	0.4	0.2
2018/2/23 12:00	0.2	0.4	0.4	0.2
2018/3/2 12:00	0.2	0.4	0.4	0.3
2018/3/9 12:00	0.2	0.4	0.4	0.3
2018/3/16 12:00	0.2	0.4	0.3	0.2
2018/3/23 12:00	0.2	0.4	0.3	0.2
2018/3/30 12:00	0.2	0.4	0.3	0.2
2018/4/6 12:00	0.2	0.3	0.3	0.2
2018/4/13 12:00	0.2	0.4	0.3	0.2
2018/4/20 12:00	0.2	0.4	0.3	0.2
2018/4/27 12:00	0.2	0.4	0.3	0.2
2018/5/4 12:00	0.2	0.3	0.3	0.2
2018/5/11 12:00	0.2	0.4	0.3	0.2
2018/5/18 12:00	0.2	0.3	0.2	0.2
2018/5/25 12:00	0.2	0.3	0.2	0.2
2018/6/1 12:00	0.2	0.3	0.3	0.3
2018/6/8 12:00	0.2	0.4	0.3	0.3
2018/6/15 12:00	0.2	0.4	0.3	0.3
2018/6/22 12:00	0.2	0.4	0.3	0.3
2018/6/29 12:00	0.3	0.4	0.4	0.3
2018/7/6 12:00	0.3	0.4	0.4	0.4
2018/7/13 12:00	0.3	0.4	0.4	0.4
2018/7/20 12:00	0.3	0.5	0.4	0.4
2018/7/27 12:00	0.4	0.5	0.4	0.4
2018/8/3 12:00	0.4	0.5	0.4	0.5
2018/8/10 12:00	0.4	0.5	0.5	0.5
2018/8/17 12:00	0.4	0.5	0.5	0.5
2018/8/24 12:00	0.5	0.6	0.6	0.6
2018/8/31 12:00	0.5	0.6	0.6	0.6
2018/9/7 12:00	0.5	0.6	0.6	0.6
2018/9/14 12:00	0.5	0.6	0.6	0.6
2018/9/21 12:00	0.5	0.6	0.6	0.6
2018/9/28 12:00	0.5	0.6	0.6	0.6
2018/10/5 12:00	0.5	0.6	0.6	0.6
2018/10/12 12:00	0.5	0.6	0.6	0.6
2018/10/19 12:00	0.5	0.6	0.6	0.6
2018/10/26 12:00	0.5	0.6	0.7	0.6
2018/11/2 12:00	0.5	0.6	0.7	0.6
2018/11/9 12:00	0.5	0.7	0.7	0.6
2018/11/16 12:00	0.5	0.7	0.7	0.6
2018/11/23 12:00	0.5	0.7	0.7	0.6
2018/11/30 12:00	0.5	0.7	0.8	0.6
2018/12/7 12:00	0.5	0.7	0.8	0.6
2018/12/14 12:00	0.6	0.8	0.8	0.7
2018/12/21 12:00	0.6	0.8	0.8	0.7
2018/12/28 12:00	0.6	0.8	0.8	0.7
2019/1/4 12:00	0.6	0.8	0.9	0.7
2019/1/11 12:00	0.6	0.8	0.9	0.7
2019/1/18 12:00	0.6	0.8	0.9	0.7
2019/1/25 12:00	0.6	0.9	1.0	0.8
2019/2/1 12:00	0.6	0.9	1.0	0.8
2019/2/8 12:00	0.7	0.9	1.0	0.8
2019/2/15 12:00	0.7	1.0	1.0	0.8
2019/2/22 12:00	0.7	1.0	1.1	0.8
2019/3/1 12:00	0.7	1.0	1.1	0.8
2019/3/8 12:00	0.7	1.0	1.0	0.8
2019/3/15 12:00	0.7	0.9	1.0	0.8
2019/3/22 12:00	0.7	0.9	1.0	0.8
2019/3/29 12:00	0.7	0.9	1.0	0.8
2019/4/5 12:00	0.7	0.9	1.0	0.8
2019/4/12 12:00	0.7	1.0	1.0	0.8
2019/4/19 12:00	0.7	0.9	1.0	0.8
2019/4/26 12:00	0.7	1.0	1.0	0.8
2019/5/3 12:00	0.7	0.9	1.0	0.9
2019/5/10 12:00	0.7	0.9	0.9	0.9
2019/5/17 12:00	0.8	0.9	0.9	0.9
2019/5/24 12:00	0.7	0.9	0.9	0.9
2019/5/31 12:00	0.8	0.9	0.9	0.9
2019/6/7 12:00	0.8	0.9	0.9	0.9
2019/6/14 12:00	0.8	0.9	0.9	0.9
2019/6/21 12:00	0.8	0.9	0.9	0.9
2019/6/28 12:00	0.7	0.8	0.9	0.9
2019/7/5 12:00	0.7	0.9	0.9	0.9
2019/7/12 12:00	0.7	0.9	0.9	0.9
2019/7/19 12:00	0.7	0.9	0.9	0.9
2019/7/26 12:00	0.8	0.9	1.0	0.9
2019/8/2 12:00	0.8	0.9	1.0	0.9
2019/8/9 12:00	0.8	0.9	1.0	0.9
2019/8/16 12:00	0.8	0.9	1.0	0.9
2019/8/23 12:00	0.8	0.9	1.0	0.9
2019/8/30 12:00	0.8	0.8	1.0	1.0
2019/9/6 12:00	0.8	1.0	1.1	1.0
2019/9/13 12:00	0.8	1.0	1.0	1.0
2019/9/20 12:00	0.8	1.0	1.0	1.0
2019/9/27 12:00	0.8	1.0	1.1	1.0
2019/10/4 12:00	0.8	1.0	1.1	0.9
2019/10/11 12:00	0.8	1.0	1.1	1.0
2019/10/18 12:00	0.8	0.9	1.0	0.9
2019/10/25 12:00	0.8	0.9	1.0	0.9
2019/11/1 12:00	0.8	0.9	1.0	0.9
2019/11/8 12:00	0.8	0.9	1.0	0.9
2019/11/15 12:00	0.8	0.9	1.1	0.9
2019/11/22 12:00	0.8	1.0	1.1	0.9
2019/11/29 12:00	0.8	0.9	1.0	0.9
2019/12/6 12:00	0.8	0.9	1.1	0.9
2019/12/13 12:00	0.8	1.0	1.1	0.9
2019/12/20 12:00	0.8	1.0	1.1	0.9
2019/12/27 12:00	0.8	1.0	1.1	0.9
2020/1/3 12:00	0.8	1.0	1.2	0.9
2020/1/10 12:00	0.8	1.0	1.2	0.9
2020/1/17 12:00	0.8	1.1	1.2	0.9
2020/1/24 12:00	0.8	1.1	1.2	0.9
2020/1/31 12:00	0.8	1.0	1.2	0.9
2020/2/7 12:00	0.8	1.1	1.2	0.9
2020/2/14 12:00	0.8	1.1	1.2	0.9
2020/2/21 12:00	0.8	1.1	1.2	1.0
2020/2/28 12:00	0.8	1.1	1.2	1.0
2020/3/6 12:00	0.8	1.1	1.2	1.0
2020/3/13 12:00	0.8	1.1	1.3	0.9
2020/3/20 12:00	0.8	1.1	1.2	0.9

※7E_2は欠番

[地下水位]		8丁目(民地部)	
事業区域名	計測地点名		
計測地点名	8F_1		
計測地点地盤高 (T.P.m)	9.30		
計測日	地下水位 (T.P.m)	地下水位 (GLm)	
2017/11/25 12:00	8.09	-1.211	
2017/12/25 12:00	7.71	-1.589	
2018/1/5 12:00	7.57	-1.728	
2018/1/12 12:00	7.52	-1.782	
2018/1/19 12:00	7.51	-1.790	
2018/1/26 12:00	7.56	-1.740	
2018/2/2 12:00	7.44	-1.859	
2018/2/9 12:00	7.53	-1.765	
2018/2/16 12:00	7.63	-1.666	
2018/2/23 12:00	7.61	-1.694	
2018/3/2 12:00	7.97	-1.327	
2018/3/9 12:00	9.25	-0.049	
2018/3/16 12:00	8.19	-1.105	
2018/3/23 12:00	8.89	-0.613	
2018/3/30 12:00	8.10	-1.202	
2018/4/6 12:00	8.08	-1.221	
2018/4/13 12:00	7.92	-1.379	
2018/4/20 12:00	7.89	-1.408	
2018/4/27 12:00	7.99	-1.309	
2018/5/4 12:00	7.98	-1.317	
2018/5/11 12:00	8.20	-1.099	
2018/5/18 12:00	8.25	-1.049	
2018/5/25 12:00	8.09	-1.208	
2018/6/1 12:00	7.98	-1.319	
2018/6/8 12:00	7.96	-1.343	
2018/6/15 12:00	7.90	-1.400	
2018/6/22 12:00	7.98	-1.318	
2018/6/29 12:00	7.92	-1.382	
2018/7/6 12:00	7.86	-1.440	
2018/7/13 12:00	7.84	-1.459	
2018/7/20 12:00	7.79	-1.515	
2018/7/27 12:00	7.74	-1.562	
2018/8/3 12:00	7.69	-1.614	
2018/8/10 12:00	7.62	-1.680	
2018/8/17 12:00	7.53	-1.765	
2018/8/24 12:00	7.49	-1.812	
2018/8/31 12:00	7.42	-1.875	
2018/9/7 12:00	7.50	-1.795	
2018/9/14 12:00	7.74	-1.559	
2018/9/21 12:00	9.23	-0.071	
2018/9/28 12:00	8.83	-0.466	
2018/10/5 12:00	8.21	-1.090	
2018/10/12 12:00	7.99	-1.310	
2018/10/19 12:00	7.86	-1.445	
2018/10/26 12:00	7.74	-1.562	
2018/11/2 12:00	7.62	-1.677	
2018/11/9 12:00	7.78	-1.522	
2018/11/16 12:00	7.73	-1.568	
2018/11/23 12:00	7.67	-1.628	
2018/11/30 12:00	7.64	-1.660	
2018/12/7 12:00	7.83	-1.668	
2018/12/14 12:00	7.81	-1.685	
2018/12/21 12:00	7.60	-1.696	
2018/12/28 12:00	10.55	1.253	
2019/1/4 12:00	7.34	-1.961	
2019/1/11 12:00	8.90	-0.400	
2019/1/18 12:00	6.66	-2.639	
2019/1/25 12:00	7.34	-1.957	
2019/2/1 12:00	7.34	-1.964	
2019/2/8 12:00	7.29	-2.013	
2019/2/15 12:00	7.22	-2.078	
2019/2/22 12:00	7.24	-2.063	
2019/2/29 12:00	7.25	-2.054	
2019/3/8 12:00	7.94	-1.363	
2019/3/15 12:00	7.85	-1.445	
2019/3/22 12:00	7.79	-1.506	
2019/3/29 12:00	7.58	-1.718	
2019/4/5 12:00	7.61	-1.694	
2019/4/12 12:00	7.48	-1.817	
2019/4/19 12:00	7.52	-1.783	
2019/4/26 12:00	7.53	-1.771	
2019/5/3 12:00	7.61	-1.692	
2019/5/10 12:00	7.59	-1.714	
2019/5/17 12:00	7.50	-1.798	
2019/5/24 12:00	7.78	-1.535	
2019/5/31 12:00	7.64	-1.663	
2019/6/7 12:00	7.57	-1.728	
2019/6/14 12:00	7.80	-1.499	
2019/6/21 12:00	7.89	-1.415	
2019/6/28 12:00	8.18	-1.117	
2019/7/5 12:00	8.99	-0.315	
2019/7/12 12:00	8.05	-1.255	
2019/7/19 12:00	8.50	-0.798	
2019/7/26 12:00	8.03	-1.273	
2019/8/2 12:00	7.85	-1.452	
2019/8/9 12:00	7.76	-1.545	
2019/8/16 12:00	7.71	-1.593	
2019/8/23 12:00	7.58	-1.719	
2019/8/30 12:00	7.69	-1.613	
2019/9/6 12:00	7.69	-1.606	
2019/9/13 12:00	8.23	-1.067	
2019/9/20 12:00	7.95	-1.352	
2019/9/27 12:00	7.89	-1.414	
2019/10/4 12:00	7.84	-1.458	
2019/10/11 12:00	7.66	-1.641	
2019/10/18 12:00	8.14	-1.160	
2019/10/25 12:00	9.24	-0.060	
2019/11/1 12:00	8.42	-0.882	
2019/11/8 12:00	8.07	-1.234	
2019/11/15 12:00	7.86	-1.443	
2019/11/22 12:00	7.63	-1.670	
2019/11/29 12:00	8.31	-0.986	
2019/12/6 12:00	7.96	-1.340	
2019/12/13 12:00	7.75	-1.547	
2019/12/20 12:00	7.67	-1.631	
2019/12/27 12:00	-	-	
2020/1/3 12:00	-	-	
2020/1/10 12:00	-	-	
2020/1/17 12:00	-	-	
2020/1/24 12:00	-	-	
2020/1/31 12:00	-	-	
2020/2/7 12:00	-	-	
2020/2/14 12:00	-	-	
2020/2/21 12:00	-	-	
2020/2/28 12:00	-	-	
2020/3/6 12:00	-	-	
2020/3/13 12:00	-	-	
2020/3/20 12:00	-	-	
1段階目水位	7.71	-1.59	
2018/2/24まで			
2段階目水位	7.70	-1.60	
2018/5/24まで			
最終水位	7.69	-1.61	
2018/8/24まで			

[地下水位]		
事業区域名	8丁目(道路部)	
計測地点名	8E_1	
計測地点地盤高 (T.P.m)	8.94	
計測日	地下水位 (T.P.m)	地下水位 (GL.m)
2017/11/25 12:00	7.71	-1.223
2017/12/25 12:00	7.30	-1.640
2018/1/5 12:00	7.29	-1.651
2018/1/12 12:00	7.27	-1.666
2018/1/19 12:00	7.28	-1.662
2018/1/26 12:00	7.36	-1.577
2018/2/2 12:00	7.37	-1.566
2018/2/9 12:00	7.41	-1.535
2018/2/16 12:00	7.43	-1.512
2018/2/23 12:00	7.45	-1.493
2018/3/2 12:00	7.61	-1.332
2018/3/9 12:00	7.93	-1.008
2018/3/16 12:00	7.92	-1.024
2018/3/23 12:00	7.92	-1.021
2018/3/30 12:00	7.89	-1.047
2018/4/6 12:00	7.83	-1.110
2018/4/13 12:00	7.72	-1.215
2018/4/20 12:00	7.74	-1.202
2018/4/27 12:00	7.86	-1.083
2018/5/4 12:00	7.80	-1.142
2018/5/11 12:00	7.93	-1.014
2018/5/18 12:00	7.92	-1.024
2018/5/25 12:00	7.77	-1.171
2018/6/1 12:00	7.63	-1.311
2018/6/8 12:00	7.63	-1.313
2018/6/15 12:00	7.47	-1.474
2018/6/22 12:00	7.42	-1.521
2018/6/29 12:00	7.50	-1.444
2018/7/6 12:00	7.41	-1.526
2018/7/13 12:00	7.47	-1.468
2018/7/20 12:00	7.50	-1.436
2018/7/27 12:00	7.47	-1.468
2018/8/3 12:00	5.76	-3.178
2018/8/10 12:00	5.77	-3.175
2018/8/17 12:00	5.78	-3.163
2018/8/24 12:00	5.78	-3.162
2018/8/31 12:00	6.86	-2.279
2018/9/7 12:00	5.88	-3.057
2018/9/14 12:00	5.73	-3.213
2018/9/21 12:00	5.88	-3.055
2018/9/28 12:00	5.89	-3.052
2018/10/5 12:00	5.89	-3.052
2018/10/12 12:00	5.89	-3.049
2018/10/19 12:00	5.90	-3.045
2018/10/26 12:00	5.90	-3.044
2018/11/2 12:00	5.90	-3.040
2018/11/9 12:00	5.90	-3.039
2018/11/16 12:00	5.90	-3.039
2018/11/23 12:00	5.91	-3.028
2018/11/30 12:00	5.90	-3.036
2018/12/7 12:00	5.90	-3.035
2018/12/14 12:00	5.91	-3.032
2018/12/21 12:00	5.91	-3.028
2018/12/28 12:00	5.91	-3.027
2019/1/4 12:00	5.92	-3.024
2019/1/11 12:00	5.92	-3.021
2019/1/18 12:00	5.92	-3.020
2019/1/25 12:00	5.92	-3.019
2019/2/1 12:00	5.92	-3.018
2019/2/8 12:00	5.92	-3.022
2019/2/15 12:00	5.92	-3.019
2019/2/22 12:00	5.92	-3.023
2019/2/29 12:00	5.91	-3.030
2019/3/8 12:00	5.91	-3.032
2019/3/15 12:00	5.91	-3.028
2019/3/22 12:00	5.91	-3.028
2019/3/29 12:00	5.90	-3.035
2019/4/5 12:00	5.91	-3.033
2019/4/12 12:00	5.86	-3.080
2019/4/19 12:00	5.84	-3.101
2019/4/26 12:00	5.76	-3.180
2019/5/3 12:00	5.75	-3.188
2019/5/10 12:00	5.75	-3.192
2019/5/17 12:00	5.75	-3.191
2019/5/24 12:00	5.75	-3.184
2019/5/31 12:00	5.90	-3.036
2019/6/7 12:00	5.90	-3.037
2019/6/14 12:00	5.90	-3.040
2019/6/21 12:00	5.90	-3.043
2019/6/28 12:00	5.89	-3.046
2019/7/5 12:00	5.89	-3.051
2019/7/12 12:00	5.89	-3.048
2019/7/19 12:00	5.89	-3.050
2019/7/26 12:00	5.89	-3.051
2019/8/2 12:00	5.89	-3.051
2019/8/9 12:00	5.88	-3.056
2019/8/16 12:00	5.88	-3.063
2019/8/23 12:00	5.89	-3.047
2019/8/30 12:00	5.87	-3.072
2019/9/6 12:00	5.87	-3.069
2019/9/13 12:00	5.86	-3.083
2019/9/20 12:00	5.86	-3.077
2019/9/27 12:00	5.86	-3.077
2019/10/4 12:00	5.87	-3.067
2019/10/11 12:00	5.88	-3.062
2019/10/18 12:00	5.86	-3.076
2019/10/25 12:00	5.88	-3.056
2019/11/1 12:00	5.88	-3.063
2019/11/8 12:00	5.92	-3.019
2019/11/15 12:00	5.93	-3.015
2019/11/22 12:00	5.95	-2.986
2019/11/29 12:00	5.87	-3.073
2019/12/6 12:00	5.87	-3.073
2019/12/13 12:00	5.88	-3.063
2019/12/20 12:00	5.89	-3.046
2019/12/27 12:00	5.92	-3.019
2020/1/3 12:00	5.97	-2.968
2020/1/10 12:00	5.99	-2.949
2020/1/17 12:00	6.02	-2.916
2020/1/24 12:00	6.03	-2.906
2020/1/31 12:00	5.90	-3.043
2020/2/7 12:00	5.89	-3.052
2020/2/14 12:00	5.89	-3.052
2020/2/21 12:00	5.89	-3.051
2020/2/28 12:00	5.89	-3.049
2020/3/6 12:00	5.89	-3.054
2020/3/13 12:00	5.88	-3.064
2020/3/20 12:00	5.87	-3.066

[沈下量]

事業区域名	8丁目(民地部)
計測地点名	8F1
計測日	沈下量 (cm)
2017/11/25 12:00	0.0
2017/12/25 12:00	0.2
2018/1/25 12:00	0.2
2018/1/12 12:00	0.2
2018/1/19 12:00	0.3
2018/1/26 12:00	0.3
2018/2/2 12:00	0.4
2018/2/9 12:00	0.4
2018/2/16 12:00	0.3
2018/2/23 12:00	0.4
2018/3/2 12:00	0.3
2018/3/9 12:00	0.3
2018/3/16 12:00	0.3
2018/3/23 12:00	0.2
2018/3/30 12:00	0.2
2018/4/6 12:00	0.2
2018/4/13 12:00	0.2
2018/4/20 12:00	0.3
2018/4/27 12:00	0.3
2018/5/4 12:00	0.2
2018/5/11 12:00	0.2
2018/5/18 12:00	0.2
2018/5/25 12:00	0.2
2018/6/1 12:00	0.2
2018/6/8 12:00	0.2
2018/6/15 12:00	0.2
2018/6/22 12:00	0.2
2018/6/29 12:00	0.2
2018/7/6 12:00	0.3
2018/7/13 12:00	0.3
2018/7/20 12:00	0.3
2018/7/27 12:00	0.3
2018/8/3 12:00	0.4
2018/8/10 12:00	0.4
2018/8/17 12:00	0.4
2018/8/24 12:00	0.5
2018/8/31 12:00	0.5
2018/9/7 12:00	0.5
2018/9/14 12:00	0.5
2018/9/21 12:00	0.4
2018/9/28 12:00	0.3
2018/10/5 12:00	0.3
2018/10/12 12:00	0.3
2018/10/19 12:00	0.4
2018/10/26 12:00	0.4
2018/11/2 12:00	0.5
2018/11/9 12:00	0.5
2018/11/16 12:00	0.5
2018/11/23 12:00	0.5
2018/11/30 12:00	0.6
2018/12/7 12:00	0.6
2018/12/14 12:00	0.6
2018/12/21 12:00	0.6
2018/12/28 12:00	0.6
2019/1/4 12:00	0.7
2019/1/11 12:00	0.7
2019/1/18 12:00	0.7
2019/1/25 12:00	0.7
2019/2/1 12:00	0.8
2019/2/8 12:00	0.8
2019/2/15 12:00	0.8
2019/2/22 12:00	0.8
2019/3/1 12:00	0.9
2019/3/8 12:00	0.8
2019/3/15 12:00	0.7
2019/3/22 12:00	0.7
2019/3/29 12:00	0.8
2019/4/5 12:00	0.8
2019/4/12 12:00	0.8
2019/4/19 12:00	0.8
2019/4/26 12:00	0.8
2019/5/3 12:00	0.8
2019/5/10 12:00	0.8
2019/5/17 12:00	0.8
2019/5/24 12:00	0.7
2019/5/31 12:00	0.7
2019/6/7 12:00	0.8
2019/6/14 12:00	0.7
2019/6/21 12:00	0.7
2019/6/28 12:00	0.6
2019/7/5 12:00	0.6
2019/7/12 12:00	0.6
2019/7/19 12:00	0.6
2019/7/26 12:00	0.6
2019/8/2 12:00	0.6
2019/8/9 12:00	0.7
2019/8/16 12:00	0.7
2019/8/23 12:00	0.7
2019/8/30 12:00	0.7
2019/9/6 12:00	0.8
2019/9/13 12:00	0.7
2019/9/20 12:00	0.7
2019/9/27 12:00	0.7
2019/10/4 12:00	0.7
2019/10/11 12:00	0.8
2019/10/18 12:00	0.7
2019/10/25 12:00	0.6
2019/11/1 12:00	0.6
2019/11/8 12:00	0.6
2019/11/15 12:00	0.7
2019/11/22 12:00	0.7
2019/11/29 12:00	0.6
2019/12/6 12:00	0.7
2019/12/13 12:00	0.7
2019/12/20 12:00	0.7
2019/12/27 12:00	-
2020/1/3 12:00	-
2020/1/10 12:00	-
2020/1/17 12:00	-
2020/1/24 12:00	-
2020/1/31 12:00	-
2020/2/7 12:00	-
2020/2/14 12:00	-
2020/2/21 12:00	-
2020/2/28 12:00	-
2020/3/6 12:00	-
2020/3/13 12:00	-
2020/3/20 12:00	-

[沈下量]

事業区域名 計測地点名	8丁目(道路部)	
	8E 1	8D 1 (ホンプ部)
計測日	沈下量 (cm)	沈下量 (cm)
2017/11/25 12:00	0.0	0.0
2017/12/25 12:00	0.3	0.1
2018/1/25 12:00	0.3	0.1
2018/1/12 12:00	0.3	0.1
2018/1/19 12:00	0.4	0.1
2018/1/26 12:00	0.4	0.1
2018/2/2 12:00	0.4	0.2
2018/2/9 12:00	0.4	0.2
2018/2/16 12:00	0.4	0.2
2018/2/23 12:00	0.4	0.2
2018/3/2 12:00	0.4	0.2
2018/3/9 12:00	0.4	0.2
2018/3/16 12:00	0.4	0.1
2018/3/23 12:00	0.3	0.1
2018/3/30 12:00	0.3	0.1
2018/4/6 12:00	0.3	0.1
2018/4/13 12:00	0.3	0.1
2018/4/20 12:00	0.4	0.1
2018/4/27 12:00	0.4	0.1
2018/5/4 12:00	0.4	0.1
2018/5/11 12:00	0.4	0.1
2018/5/18 12:00	0.3	0.1
2018/5/25 12:00	0.3	0.1
2018/6/1 12:00	0.4	0.1
2018/6/8 12:00	0.4	0.1
2018/6/15 12:00	0.4	0.1
2018/6/22 12:00	0.4	0.1
2018/6/29 12:00	0.4	0.2
2018/7/6 12:00	0.4	0.2
2018/7/13 12:00	0.5	0.2
2018/7/20 12:00	0.5	0.2
2018/7/27 12:00	0.5	0.2
2018/8/3 12:00	0.6	0.2
2018/8/10 12:00	0.7	0.3
2018/8/17 12:00	0.7	0.3
2018/8/24 12:00	0.8	0.4
2018/8/31 12:00	0.8	0.4
2018/9/7 12:00	0.8	0.4
2018/9/14 12:00	0.9	0.4
2018/9/21 12:00	0.9	0.4
2018/9/28 12:00	0.8	0.3
2018/10/5 12:00	0.8	0.3
2018/10/12 12:00	0.8	0.3
2018/10/19 12:00	0.9	0.4
2018/10/26 12:00	0.9	0.4
2018/11/2 12:00	1.0	0.4
2018/11/9 12:00	1.0	0.4
2018/11/16 12:00	1.2	0.4
2018/11/23 12:00	1.2	0.4
2018/11/30 12:00	1.3	0.4
2018/12/7 12:00	1.3	0.4
2018/12/14 12:00	1.3	0.4
2018/12/21 12:00	1.4	0.5
2018/12/28 12:00	1.4	0.4
2019/1/4 12:00	1.4	0.5
2019/1/11 12:00	1.5	0.5
2019/1/18 12:00	1.5	0.5
2019/1/25 12:00	1.5	0.5
2019/2/1 12:00	1.6	0.5
2019/2/8 12:00	1.6	0.5
2019/2/15 12:00	1.6	0.6
2019/2/22 12:00	1.7	0.6
2019/3/1 12:00	1.7	0.6
2019/3/8 12:00	1.7	0.5
2019/3/15 12:00	1.7	0.5
2019/3/22 12:00	1.7	0.5
2019/3/29 12:00	1.7	0.5
2019/4/5 12:00	1.7	0.5
2019/4/12 12:00	1.7	0.5
2019/4/19 12:00	1.7	0.5
2019/4/26 12:00	1.7	0.5
2019/5/3 12:00	1.7	0.5
2019/5/10 12:00	1.7	0.5
2019/5/17 12:00	1.7	0.5
2019/5/24 12:00	1.7	0.5
2019/5/31 12:00	1.7	0.5
2019/6/7 12:00	1.7	0.5
2019/6/14 12:00	1.7	0.5
2019/6/21 12:00	1.7	0.5
2019/6/28 12:00	1.7	0.4
2019/7/5 12:00	1.7	0.5
2019/7/12 12:00	1.7	0.5
2019/7/19 12:00	1.7	0.5
2019/7/26 12:00	1.7	0.5
2019/8/2 12:00	1.7	0.5
2019/8/9 12:00	1.7	0.5
2019/8/16 12:00	1.7	0.5
2019/8/23 12:00	1.8	0.6
2019/8/30 12:00	1.8	0.6
2019/9/6 12:00	1.8	0.6
2019/9/13 12:00	1.8	0.6
2019/9/20 12:00	1.8	0.6
2019/9/27 12:00	1.8	0.6
2019/10/4 12:00	1.8	0.6
2019/10/11 12:00	1.8	0.6
2019/10/18 12:00	1.8	0.6
2019/10/25 12:00	1.8	0.5
2019/11/1 12:00	1.8	0.5
2019/11/8 12:00	1.8	0.5
2019/11/15 12:00	1.8	0.6
2019/11/22 12:00	1.9	0.6
2019/11/29 12:00	1.8	0.5
2019/12/6 12:00	1.8	0.6
2019/12/13 12:00	1.9	0.6
2019/12/20 12:00	1.9	0.6
2019/12/27 12:00	1.9	0.6
2020/1/3 12:00	1.9	0.6
2020/1/10 12:00	1.9	0.6
2020/1/17 12:00	2.0	0.6
2020/1/24 12:00	2.0	0.6
2020/1/31 12:00	2.0	0.6
2020/2/7 12:00	2.0	0.6
2020/2/14 12:00	2.0	0.6
2020/2/21 12:00	2.0	0.6
2020/2/28 12:00	2.0	0.6
2020/3/6 12:00	2.0	0.6
2020/3/13 12:00	2.1	0.6
2020/3/20 12:00	2.1	0.6

[地下水位]		10丁目(民地部)			
事業区域名	計測地点名				
計測地点地盤高(T.P.m)	10F_1		10F_2		
計測日	地下水位(T.P.m)	地下水位(G.L.m)	地下水位(T.P.m)	地下水位(G.L.m)	
2017/11/25 12:00	7.13	-1.927	7.30	-1.848	
2017/12/25 12:00	6.89	-2.274	7.01	-2.138	
2018/1/5 12:00	6.89	-2.274	6.92	-2.232	
2018/1/12 12:00	6.67	-2.286	6.89	-2.261	
2018/1/19 12:00	6.66	-2.298	6.89	-2.262	
2018/1/26 12:00	6.69	-2.274	6.90	-2.245	
2018/2/2 12:00	6.70	-2.258	6.84	-2.308	
2018/2/9 12:00	6.72	-2.235	6.87	-2.281	
2018/2/16 12:00	6.72	-2.239	6.89	-2.264	
2018/2/23 12:00	6.70	-2.256	6.85	-2.303	
2018/3/2 12:00	6.72	-2.240	6.93	-2.222	
2018/3/9 12:00	6.82	-2.143	6.93	-2.218	
2018/3/16 12:00	7.04	-1.919	7.07	-2.063	
2018/3/23 12:00	7.09	-1.866	7.15	-2.002	
2018/3/30 12:00	7.05	-1.910	7.12	-2.025	
2018/4/6 12:00	7.02	-1.936	7.13	-2.017	
2018/4/13 12:00	6.98	-1.981	7.10	-2.050	
2018/4/20 12:00	6.98	-1.979	7.08	-2.068	
2018/4/27 12:00	7.06	-1.901	7.13	-2.017	
2018/5/4 12:00	7.08	-1.880	7.18	-1.965	
2018/5/11 12:00	7.17	-1.789	7.16	-1.991	
2018/5/18 12:00	7.24	-1.721	7.27	-1.876	
2018/5/25 12:00	7.16	-1.801	7.27	-1.880	
2018/6/1 12:00	7.07	-1.887	7.25	-1.899	
2018/6/8 12:00	7.04	-1.924	7.22	-1.931	
2018/6/15 12:00	6.84	-2.023	7.20	-1.950	
2018/6/22 12:00	6.70	-2.263	7.19	-1.963	
2018/6/29 12:00	6.62	-2.339	7.13	-2.020	
2018/7/6 12:00	6.59	-2.371	7.08	-2.065	
2018/7/13 12:00	6.58	-2.380	7.06	-2.095	
2018/7/20 12:00	6.57	-2.393	7.01	-2.136	
2018/7/27 12:00	6.56	-2.401	6.97	-2.176	
2018/8/3 12:00	6.54	-2.424	7.02	-2.131	
2018/8/10 12:00	6.48	-2.483	7.01	-2.138	
2018/8/17 12:00	6.45	-2.514	6.97	-2.177	
2018/8/24 12:00	6.43	-2.532	6.94	-2.212	
2018/8/31 12:00	6.40	-2.559	6.92	-2.231	
2018/9/7 12:00	6.46	-2.495	6.99	-2.160	
2018/9/14 12:00	6.46	-2.502	6.99	-2.157	
2018/9/21 12:00	6.48	-2.478	7.06	-2.093	
2018/9/28 12:00	6.61	-2.354	7.14	-2.010	
2018/10/5 12:00	6.60	-2.355	7.14	-2.013	
2018/10/12 12:00	6.50	-2.459	7.14	-2.011	
2018/10/19 12:00	6.45	-2.511	7.07	-2.080	
2018/10/26 12:00	6.41	-2.547	7.01	-2.138	
2018/11/2 12:00	6.39	-2.569	6.95	-2.196	
2018/11/9 12:00	6.39	-2.573	6.96	-2.191	
2018/11/16 12:00	6.37	-2.585	6.92	-2.228	
2018/11/23 12:00	6.36	-2.596	6.91	-2.240	
2018/11/30 12:00	6.35	-2.606	6.89	-2.264	
2018/12/7 12:00	6.34	-2.617	6.89	-2.283	
2018/12/14 12:00	6.34	-2.617	6.86	-2.285	
2018/12/21 12:00	6.33	-2.633	6.84	-2.305	
2018/12/28 12:00	6.32	-2.641	6.86	-2.289	
2019/1/4 12:00	6.31	-2.650	6.79	-2.357	
2019/1/11 12:00	6.35	-2.608	6.81	-2.342	
2019/1/18 12:00	6.42	-2.536	6.80	-2.350	
2019/1/25 12:00	6.44	-2.518	6.77	-2.381	
2019/2/1 12:00	6.46	-2.504	6.78	-2.368	
2019/2/8 12:00	6.44	-2.518	6.77	-2.385	
2019/2/15 12:00	6.37	-2.585	6.71	-2.435	
2019/2/22 12:00	6.36	-2.604	6.74	-2.411	
2019/3/1 12:00	6.35	-2.606	6.75	-2.402	
2019/3/8 12:00	6.40	-2.556	6.81	-2.336	
2019/3/15 12:00	6.96	-1.997	6.87	-2.281	
2019/3/22 12:00	6.90	-2.062	6.98	-2.167	
2019/3/29 12:00	6.85	-2.107	6.93	-2.215	
2019/4/5 12:00	6.84	-2.121	6.94	-2.212	
2019/4/12 12:00	6.83	-2.126	6.92	-2.230	
2019/4/19 12:00	6.83	-2.132	6.94	-2.212	
2019/4/26 12:00	6.82	-2.135	6.95	-2.196	
2019/5/3 12:00	6.87	-2.093	6.96	-2.188	
2019/5/10 12:00	6.86	-2.100	6.98	-2.170	
2019/5/17 12:00	6.83	-2.139	6.94	-2.213	
2019/5/24 12:00	6.89	-2.072	7.00	-2.149	
2019/5/31 12:00	6.86	-2.104	7.00	-2.149	
2019/6/7 12:00	6.83	-2.132	6.99	-2.164	
2019/6/14 12:00	6.94	-2.024	7.03	-2.117	
2019/6/21 12:00	6.97	-1.994	7.10	-2.046	
2019/6/28 12:00	7.00	-1.962	7.15	-1.995	
2019/7/5 12:00	6.98	-1.977	7.14	-2.012	
2019/7/12 12:00	6.93	-2.031	7.12	-2.029	
2019/7/19 12:00	7.00	-1.957	7.14	-2.012	
2019/7/26 12:00	6.91	-2.050	7.13	-2.023	
2019/8/2 12:00	6.86	-2.103	7.09	-2.058	
2019/8/9 12:00	6.92	-2.142	7.06	-2.093	
2019/8/16 12:00	6.79	-2.166	7.05	-2.100	
2019/8/23 12:00	6.79	-2.169	7.01	-2.138	
2019/8/30 12:00	6.84	-2.118	7.07	-2.078	
2019/9/6 12:00	6.80	-2.157	7.04	-2.110	
2019/9/13 12:00	6.92	-2.035	7.12	-2.031	
2019/9/20 12:00	6.85	-2.114	7.11	-2.038	
2019/9/27 12:00	6.81	-2.153	7.05	-2.100	
2019/10/4 12:00	6.79	-2.174	7.07	-2.081	
2019/10/11 12:00	6.76	-2.198	7.01	-2.136	
2019/10/18 12:00	7.63	-1.325	7.27	-1.883	
2019/10/25 12:00	7.32	-1.644	7.32	-1.827	
2019/11/1 12:00	7.14	-1.824	7.32	-1.830	
2019/11/8 12:00	6.80	-2.060	7.24	-1.813	
2019/11/15 12:00	6.80	-2.155	7.14	-2.010	
2019/11/22 12:00	6.75	-2.207	7.02	-2.130	
2019/11/29 12:00	6.89	-2.066	7.15	-2.003	
2019/12/6 12:00	6.80	-2.164	7.10	-2.051	
2019/12/13 12:00	6.75	-2.213	7.04	-2.110	
2019/12/20 12:00	6.76	-2.205	7.01	-2.140	
2019/12/27 12:00	6.84	-2.115	7.03	-2.122	
2020/1/3 12:00	6.71	-2.246	6.96	-2.188	
2020/1/10 12:00	6.70	-2.257	6.95	-2.201	
2020/1/17 12:00	6.69	-2.270	6.92	-2.227	
2020/1/24 12:00	6.68	-2.278	6.99	-2.157	
2020/1/31 12:00	6.77	-2.189	6.99	-2.159	
2020/2/7 12:00	6.75	-2.213	6.99	-2.155	
2020/2/14 12:00	6.71	-2.252	6.98	-2.173	
2020/2/21 12:00	6.69	-2.274	6.90	-2.251	
2020/2/28 12:00	6.68	-2.282	6.93	-2.223	
2020/3/6 12:00	6.67	-2.289	6.93	-2.219	
2020/3/13 12:00	6.68	-2.282	6.91	-2.239	
2020/3/20 12:00	6.68	-2.276	6.98	-2.172	
1段階目水位	6.94	-2.02	6.94	-2.21	
2段階目水位	6.75	-2.21	6.75	-2.40	
最終水位	6.56	-2.40	6.56	-2.59	

[沈下量]

事業区域名 計測地点名 計測日	10丁目(民地部)	
	10F 1 沈下量 (cm)	10F 2 沈下量 (cm)
2017/11/25 12:00	0.0	0.0
2017/12/25 12:00	0.0	0.1
2018/1/25 12:00	0.1	0.1
2018/1/12 12:00	0.1	0.1
2018/1/19 12:00	0.1	0.2
2018/1/26 12:00	0.1	0.2
2018/2/2 12:00	0.2	0.2
2018/2/9 12:00	0.2	0.2
2018/2/16 12:00	0.2	0.3
2018/2/23 12:00	0.2	0.3
2018/3/2 12:00	0.2	0.3
2018/3/9 12:00	0.2	0.4
2018/3/16 12:00	0.3	0.4
2018/3/23 12:00	0.3	0.4
2018/3/30 12:00	0.3	0.4
2018/4/6 12:00	0.3	0.4
2018/4/13 12:00	0.3	0.4
2018/4/20 12:00	0.3	0.4
2018/4/27 12:00	0.3	0.4
2018/5/4 12:00	0.3	0.4
2018/5/11 12:00	0.3	0.5
2018/5/18 12:00	0.3	0.5
2018/5/25 12:00	0.3	0.5
2018/6/1 12:00	0.3	0.5
2018/6/8 12:00	0.4	0.5
2018/6/15 12:00	0.4	0.5
2018/6/22 12:00	0.4	0.5
2018/6/29 12:00	0.4	0.5
2018/7/6 12:00	0.5	0.6
2018/7/13 12:00	0.5	0.6
2018/7/20 12:00	0.5	0.7
2018/7/27 12:00	0.5	0.7
2018/8/3 12:00	0.6	0.7
2018/8/10 12:00	0.6	0.8
2018/8/17 12:00	0.7	0.8
2018/8/24 12:00	0.7	0.8
2018/8/31 12:00	0.7	0.9
2018/9/7 12:00	0.8	0.9
2018/9/14 12:00	0.8	0.9
2018/9/21 12:00	0.8	0.9
2018/9/28 12:00	0.9	0.9
2018/10/5 12:00	0.9	1.0
2018/10/12 12:00	0.9	0.9
2018/10/19 12:00	0.9	0.9
2018/10/26 12:00	0.9	1.0
2018/11/2 12:00	0.9	1.0
2018/11/9 12:00	0.9	1.0
2018/11/16 12:00	1.0	1.0
2018/11/23 12:00	1.0	1.0
2018/11/30 12:00	1.0	1.0
2018/12/7 12:00	1.0	1.0
2018/12/14 12:00	1.0	1.1
2018/12/21 12:00	1.0	1.1
2018/12/28 12:00	1.0	1.1
2019/1/4 12:00	1.1	1.1
2019/1/11 12:00	1.0	1.1
2019/1/18 12:00	1.1	1.1
2019/1/25 12:00	1.1	1.2
2019/2/1 12:00	1.1	1.2
2019/2/8 12:00	1.1	1.2
2019/2/15 12:00	1.2	1.2
2019/2/22 12:00	1.2	1.3
2019/3/1 12:00	1.2	1.3
2019/3/8 12:00	1.2	1.3
2019/3/15 12:00	1.3	1.3
2019/3/22 12:00	1.2	1.3
2019/3/29 12:00	1.3	1.4
2019/4/5 12:00	1.3	1.4
2019/4/12 12:00	1.3	1.4
2019/4/19 12:00	1.3	1.4
2019/4/26 12:00	1.3	1.4
2019/5/3 12:00	1.4	1.4
2019/5/10 12:00	1.4	1.4
2019/5/17 12:00	1.4	1.5
2019/5/24 12:00	1.4	1.5
2019/5/31 12:00	1.5	1.5
2019/6/7 12:00	1.5	1.5
2019/6/14 12:00	1.5	1.6
2019/6/21 12:00	1.5	1.6
2019/6/28 12:00	1.5	1.6
2019/7/5 12:00	1.6	1.6
2019/7/12 12:00	1.6	1.6
2019/7/19 12:00	1.6	1.6
2019/7/26 12:00	1.6	1.6
2019/8/2 12:00	1.6	1.6
2019/8/9 12:00	1.6	1.6
2019/8/16 12:00	1.7	1.6
2019/8/23 12:00	1.7	1.7
2019/8/30 12:00	1.7	1.7
2019/9/6 12:00	1.8	1.7
2019/9/13 12:00	1.8	1.7
2019/9/20 12:00	1.8	1.7
2019/9/27 12:00	1.8	1.8
2019/10/4 12:00	1.8	1.7
2019/10/11 12:00	1.8	1.8
2019/10/18 12:00	1.8	1.8
2019/10/25 12:00	1.8	1.8
2019/11/1 12:00	1.8	1.8
2019/11/8 12:00	1.8	1.7
2019/11/15 12:00	1.8	1.7
2019/11/22 12:00	1.8	1.8
2019/11/29 12:00	1.8	1.8
2019/12/6 12:00	1.8	1.7
2019/12/13 12:00	1.8	1.8
2019/12/20 12:00	1.8	1.8
2019/12/27 12:00	1.8	1.7
2020/1/3 12:00	1.8	1.8
2020/1/10 12:00	1.8	1.8
2020/1/17 12:00	1.9	1.8
2020/1/24 12:00	1.9	1.8
2020/1/31 12:00	1.9	1.8
2020/2/7 12:00	1.9	1.8
2020/2/14 12:00	1.9	1.8
2020/2/21 12:00	2.0	1.9
2020/2/28 12:00	1.9	1.9
2020/3/6 12:00	1.9	1.9
2020/3/13 12:00	2.0	1.9
2020/3/20 12:00	2.0	1.9

[沈下量]		10丁目(道路部)				
事業区域名	10E 1	10E 2	10E 3	10E 4	10D 1(ホソジ部)	
計測地点名	沈下量 (cm)	沈下量 (cm)	沈下量 (cm)	沈下量 (cm)	沈下量 (cm)	
2017/11/25 12:00	0.0	0.0	0.0	0.0	0.0	
2017/12/25 12:00	0.1	0.1	0.1	0.1	0.1	
2018/1/25 12:00	0.1	0.1	0.2	0.2	0.2	
2018/1/12 12:00	0.1	0.1	0.2	0.2	0.2	
2018/1/19 12:00	0.1	0.1	0.3	0.2	0.2	
2018/1/26 12:00	0.1	0.2	0.3	0.2	0.2	
2018/2/2 12:00	0.1	0.2	0.3	0.3	0.2	
2018/2/9 12:00	0.2	0.2	0.3	0.3	0.3	
2018/2/16 12:00	0.2	0.2	0.3	0.3	0.3	
2018/2/23 12:00	0.2	0.3	0.4	0.3	0.3	
2018/3/2 12:00	0.2	0.3	0.4	0.3	0.3	
2018/3/9 12:00	0.2	0.3	0.4	0.3	0.3	
2018/3/16 12:00	0.2	0.3	0.4	0.3	0.3	
2018/3/23 12:00	0.2	0.4	0.4	0.3	0.3	
2018/3/30 12:00	0.2	0.5	0.4	0.4	0.3	
2018/4/6 12:00	0.2	0.5	0.4	0.3	0.3	
2018/4/13 12:00	0.2	0.5	0.4	0.4	0.4	
2018/4/20 12:00	0.2	0.5	0.4	0.4	0.4	
2018/4/27 12:00	0.2	0.5	0.4	0.4	0.4	
2018/5/4 12:00	0.2	0.5	0.4	0.4	0.4	
2018/5/11 12:00	0.3	0.5	0.4	0.4	0.5	
2018/5/18 12:00	0.3	0.5	0.4	0.4	0.4	
2018/5/25 12:00	0.3	0.5	0.4	0.4	0.5	
2018/6/1 12:00	0.3	0.5	0.5	0.5	0.5	
2018/6/8 12:00	0.3	0.5	0.5	0.5	0.5	
2018/6/15 12:00	0.3	0.7	0.5	0.5	0.5	
2018/6/22 12:00	0.3	0.7	0.5	0.5	0.5	
2018/6/29 12:00	0.4	0.7	0.5	0.5	0.5	
2018/7/6 12:00	0.4	0.7	0.5	0.5	0.5	
2018/7/13 12:00	0.4	0.8	0.6	0.7	0.6	
2018/7/20 12:00	0.4	0.8	0.7	0.7	0.6	
2018/7/27 12:00	0.5	0.8	0.7	0.7	0.7	
2018/8/3 12:00	0.5	0.8	0.7	0.8	0.7	
2018/8/10 12:00	0.5	0.8	0.8	0.8	0.7	
2018/8/17 12:00	0.6	0.8	0.8	0.8	0.7	
2018/8/24 12:00	0.6	0.9	0.9	0.9	0.8	
2018/8/31 12:00	0.6	0.9	0.9	0.9	0.8	
2018/9/7 12:00	0.7	0.9	0.9	0.9	0.8	
2018/9/14 12:00	0.7	0.9	1.0	1.0	0.8	
2018/9/21 12:00	0.7	0.9	0.9	1.0	0.8	
2018/9/28 12:00	0.7	0.9	0.9	1.0	0.8	
2018/10/5 12:00	0.7	0.9	1.0	1.0	0.9	
2018/10/12 12:00	0.7	0.9	0.9	1.0	0.9	
2018/10/19 12:00	0.7	0.9	1.0	1.0	0.9	
2018/10/26 12:00	0.7	0.9	1.0	1.0	0.9	
2018/11/2 12:00	0.7	1.0	1.0	1.1	0.9	
2018/11/9 12:00	0.8	1.0	1.0	1.1	0.9	
2018/11/16 12:00	0.8	1.0	1.1	1.1	0.9	
2018/11/23 12:00	0.8	1.0	1.0	1.1	0.9	
2018/11/30 12:00	0.8	1.0	1.1	1.1	0.9	
2018/12/7 12:00	0.8	1.0	1.1	1.1	0.9	
2018/12/14 12:00	0.8	1.0	1.1	1.2	1.0	
2018/12/21 12:00	0.8	1.0	1.2	1.2	1.0	
2018/12/28 12:00	0.8	1.0	1.1	1.2	1.0	
2019/1/4 12:00	0.8	1.0	1.2	1.2	1.0	
2019/1/11 12:00	0.8	1.0	1.2	1.2	1.0	
2019/1/18 12:00	0.8	1.0	1.2	1.3	1.0	
2019/1/25 12:00	0.8	1.1	1.2	1.3	1.0	
2019/2/1 12:00	0.9	1.1	1.2	1.3	1.0	
2019/2/8 12:00	0.9	1.1	1.3	1.3	1.1	
2019/2/15 12:00	0.9	1.1	1.3	1.4	1.1	
2019/2/22 12:00	0.9	1.1	1.3	1.4	1.1	
2019/3/1 12:00	0.9	1.1	1.4	1.4	1.1	
2019/3/8 12:00	0.9	1.1	1.4	1.4	1.1	
2019/3/15 12:00	0.9	1.1	1.4	1.4	1.1	
2019/3/22 12:00	0.9	1.1	1.3	1.4	1.1	
2019/3/29 12:00	1.0	1.1	1.4	1.4	1.1	
2019/4/5 12:00	1.0	1.1	1.3	1.4	1.1	
2019/4/12 12:00	1.0	1.1	1.4	1.5	1.1	
2019/4/19 12:00	1.0	1.1	1.4	1.5	1.1	
2019/4/26 12:00	1.0	1.2	1.4	1.5	1.1	
2019/5/3 12:00	1.0	1.2	1.4	1.5	1.2	
2019/5/10 12:00	1.0	1.2	1.4	1.6	1.2	
2019/5/17 12:00	1.1	1.2	1.4	1.6	1.2	
2019/5/24 12:00	1.1	1.2	1.4	1.6	1.2	
2019/5/31 12:00	1.1	1.2	1.4	1.6	1.2	
2019/6/7 12:00	1.1	1.2	1.5	1.6	1.2	
2019/6/14 12:00	1.1	1.2	1.5	1.7	1.3	
2019/6/21 12:00	1.1	1.2	1.5	1.7	1.3	
2019/6/28 12:00	1.1	1.2	1.5	1.7	1.3	
2019/7/5 12:00	1.1	1.2	1.5	1.7	1.3	
2019/7/12 12:00	1.2	1.3	1.5	1.7	1.3	
2019/7/19 12:00	1.2	1.3	1.5	1.7	1.3	
2019/7/26 12:00	1.2	1.3	1.5	1.7	1.3	
2019/8/2 12:00	1.2	1.3	1.5	1.8	1.3	
2019/8/9 12:00	1.2	1.3	1.6	1.8	1.3	
2019/8/16 12:00	1.2	1.3	1.6	1.8	1.4	
2019/8/23 12:00	1.2	1.3	1.6	1.8	1.4	
2019/8/30 12:00	1.3	1.3	1.6	1.8	1.4	
2019/9/6 12:00	1.3	1.3	1.7	1.9	1.4	
2019/9/13 12:00	1.3	1.3	1.6	1.9	1.4	
2019/9/20 12:00	1.3	1.3	1.6	1.9	1.4	
2019/9/27 12:00	1.3	1.4	1.7	1.9	1.4	
2019/10/4 12:00	1.3	1.3	1.6	1.9	1.4	
2019/10/11 12:00	1.3	1.4	1.7	1.9	1.4	
2019/10/18 12:00	1.3	1.3	1.6	1.9	1.4	
2019/10/25 12:00	1.3	1.3	1.6	1.9	1.4	
2019/11/1 12:00	1.3	1.3	1.6	1.9	1.4	
2019/11/8 12:00	1.3	1.3	1.6	1.9	1.4	
2019/11/15 12:00	1.3	1.3	1.6	1.9	1.5	
2019/11/22 12:00	1.3	1.4	1.7	1.9	1.5	
2019/11/29 12:00	1.3	1.3	1.7	1.9	1.5	
2019/12/6 12:00	1.3	1.3	1.7	1.9	1.5	
2019/12/13 12:00	1.3	1.3	1.7	1.9	1.5	
2019/12/20 12:00	1.3	1.3	1.7	1.9	1.5	
2019/12/27 12:00	1.3	1.3	1.6	1.9	1.5	
2020/1/3 12:00	1.3	1.3	1.7	2.0	1.5	
2020/1/10 12:00	1.3	1.3	1.7	2.0	1.5	
2020/1/17 12:00	1.3	1.4	1.7	2.0	1.5	
2020/1/24 12:00	1.3	1.4	1.7	2.0	1.5	
2020/1/31 12:00	1.3	1.4	1.7	2.0	1.5	
2020/2/7 12:00	1.3	1.4	1.7	2.0	1.5	
2020/2/14 12:00	1.3	1.4	1.7	2.0	1.5	
2020/2/21 12:00	1.3	1.4	1.8	2.1	1.5	
2020/2/28 12:00	1.3	1.4	1.8	2.1	1.5	
2020/3/6 12:00	1.3	1.4	1.8	2.1	1.5	
2020/3/13 12:00	1.3	1.4	1.8	2.1	1.5	
2020/3/20 12:00	1.3	1.4	1.8	2.1	1.5	

[地下水位]

事業区域名	11丁目(民地部)			
	11F.1		11F.2	
計測地点名				
計測地点地盤高 (T.P.m)	8.36		9.22	
計測日	地下水位 (T.P.m)	地下水位 (G.Lm)	地下水位 (T.P.m)	地下水位 (G.Lm)
2017/11/25 12:00	7.41	-0.955	7.32	-1.906
2017/12/25 12:00	6.86	-1.499	6.84	-2.592
2018/1/5 12:00	6.79	-1.574	6.88	-2.544
2018/1/12 12:00	6.75	-1.607	6.68	-2.538
2018/1/19 12:00	6.79	-1.574	6.70	-2.522
2018/1/26 12:00	6.85	-1.510	6.76	-2.456
2018/2/2 12:00	6.85	-1.507	6.79	-2.428
2018/2/9 12:00	6.89	-1.475	6.83	-2.393
2018/2/16 12:00	6.93	-1.432	6.85	-2.371
2018/2/23 12:00	6.94	-1.421	6.86	-2.360
2018/3/2 12:00	7.02	-1.339	6.94	-2.283
2018/3/9 12:00	7.44	-0.919	7.36	-1.864
2018/3/16 12:00	7.41	-0.948	7.34	-1.879
2018/3/23 12:00	7.57	-0.786	7.54	-1.683
2018/3/30 12:00	7.28	-1.082	7.20	-2.022
2018/4/6 12:00	7.37	-0.987	7.27	-1.952
2018/4/13 12:00	7.26	-1.096	7.18	-2.042
2018/4/20 12:00	7.22	-1.137	7.12	-2.097
2018/4/27 12:00	7.23	-1.131	7.09	-2.132
2018/5/4 12:00	7.20	-1.160	7.06	-2.155
2018/5/11 12:00	7.19	-1.170	7.05	-2.168
2018/5/18 12:00	7.17	-1.185	7.03	-2.187
2018/5/25 12:00	7.28	-1.080	7.15	-2.068
2018/6/1 12:00	7.07	-1.291	6.90	-2.322
2018/6/8 12:00	7.08	-1.277	6.91	-2.313
2018/6/15 12:00	6.89	-1.469	6.80	-2.617
2018/6/22 12:00	6.84	-1.524	6.54	-2.884
2018/6/29 12:00	6.76	-1.597	6.52	-2.703
2018/7/6 12:00	6.74	-1.620	6.52	-2.696
2018/7/13 12:00	6.77	-1.586	6.52	-2.697
2018/7/20 12:00	6.74	-1.624	6.52	-2.703
2018/7/27 12:00	6.73	-1.628	6.50	-2.717
2018/8/3 12:00	6.67	-1.692	6.35	-2.868
2018/8/10 12:00	6.64	-1.721	6.33	-2.895
2018/8/17 12:00	6.58	-1.782	6.31	-2.913
2018/8/24 12:00	6.57	-1.794	6.31	-2.914
2018/8/31 12:00	6.55	-1.809	6.29	-2.931
2018/9/7 12:00	6.61	-1.749	6.32	-2.899
2018/9/14 12:00	6.60	-1.751	6.33	-2.895
2018/9/21 12:00	6.70	-1.657	6.38	-2.837
2018/9/28 12:00	6.77	-1.591	6.50	-2.719
2018/10/5 12:00	6.66	-1.703	6.39	-2.826
2018/10/12 12:00	6.63	-1.729	6.35	-2.872
2018/10/19 12:00	6.59	-1.773	6.33	-2.891
2018/10/26 12:00	6.55	-1.807	6.33	-2.887
2018/11/2 12:00	6.50	-1.855	6.32	-2.902
2018/11/9 12:00	6.57	-1.793	6.33	-2.888
2018/11/16 12:00	6.50	-1.856	6.32	-2.900
2018/11/23 12:00	6.50	-1.861	6.31	-2.910
2018/11/30 12:00	6.47	-1.894	6.31	-2.913
2018/12/7 12:00	6.46	-1.898	6.31	-2.915
2018/12/14 12:00	6.42	-1.944	6.29	-2.926
2018/12/21 12:00	6.36	-1.999	6.28	-2.941
2018/12/28 12:00	6.39	-1.974	6.27	-2.950
2019/1/4 12:00	6.33	-2.031	6.25	-2.967
2019/1/11 12:00	6.42	-1.944	6.25	-2.974
2019/1/18 12:00	6.42	-1.945	6.23	-2.987
2019/1/25 12:00	6.41	-1.950	6.23	-2.992
2019/2/1 12:00	6.41	-1.948	6.23	-2.990
2019/2/8 12:00	6.41	-1.953	6.21	-3.010
2019/2/15 12:00	6.41	-1.954	6.21	-3.011
2019/2/22 12:00	6.41	-1.955	6.20	-3.017
2019/3/1 12:00	6.41	-1.955	6.23	-2.990
2019/3/8 12:00	6.41	-1.952	6.24	-2.981
2019/3/15 12:00	6.41	-1.953	6.27	-2.951
2019/3/22 12:00	6.46	-1.897	6.26	-2.958
2019/3/29 12:00	6.35	-2.013	6.24	-2.983
2019/4/5 12:00	6.41	-1.952	6.25	-2.974
2019/4/12 12:00	6.39	-1.973	6.25	-2.968
2019/4/19 12:00	6.38	-1.975	6.24	-2.983
2019/4/26 12:00	6.42	-1.944	6.24	-2.983
2019/5/3 12:00	6.43	-1.929	6.27	-2.954
2019/5/10 12:00	6.41	-1.951	6.18	-3.041
2019/5/17 12:00	6.37	-1.995	6.15	-3.063
2019/5/24 12:00	6.46	-1.897	6.18	-3.037
2019/5/31 12:00	6.42	-1.943	6.16	-3.063
2019/6/7 12:00	6.41	-1.952	6.15	-3.070
2019/6/14 12:00	6.48	-1.881	6.20	-3.020
2019/6/21 12:00	6.52	-1.842	6.22	-3.004
2019/6/28 12:00	6.62	-1.736	6.25	-2.973
2019/7/5 12:00	6.63	-1.726	6.31	-2.907
2019/7/12 12:00	6.61	-1.751	6.25	-2.971
2019/7/19 12:00	6.63	-1.734	6.33	-2.893
2019/7/26 12:00	6.53	-1.831	6.26	-2.962
2019/8/2 12:00	6.52	-1.839	6.24	-2.975
2019/8/9 12:00	6.50	-1.858	6.24	-2.976
2019/8/16 12:00	6.59	-1.773	6.25	-2.866
2019/8/23 12:00	6.54	-1.817	6.25	-2.873
2019/8/30 12:00	6.53	-1.830	6.24	-2.975
2019/9/6 12:00	6.51	-1.853	6.24	-2.985
2019/9/13 12:00	6.58	-1.780	6.26	-2.959
2019/9/20 12:00	6.49	-1.866	6.22	-2.999
2019/9/27 12:00	6.46	-1.896	6.21	-3.008
2019/10/4 12:00	6.55	-1.809	6.21	-3.008
2019/10/11 12:00	6.49	-1.871	6.22	-3.001
2019/10/18 12:00	6.72	-1.642	6.27	-2.948
2019/10/25 12:00	6.75	-1.611	6.58	-2.637
2019/11/1 12:00	6.65	-1.706	6.16	-3.063
2019/11/8 12:00	6.55	-1.806	7.48	-1.740
2019/11/15 12:00	6.51	-1.846	5.92	-3.302
2019/11/22 12:00	6.42	-1.943	6.24	-2.976
2019/11/29 12:00	6.56	-1.799	7.97	-1.254
2019/12/6 12:00	6.45	-1.909	6.73	-2.493
2019/12/13 12:00	6.46	-1.902	6.69	-2.534
2019/12/20 12:00	6.49	-1.874	6.70	-2.520
2019/12/27 12:00	6.57	-1.786	6.69	-2.527
2020/1/3 12:00	6.46	-1.901	6.66	-2.562
2020/1/10 12:00	6.42	-1.938	6.67	-2.554
2020/1/17 12:00	6.40	-1.960	6.67	-2.554
2020/1/24 12:00	6.39	-1.969	6.65	-2.566
2020/1/31 12:00	6.55	-1.809	6.76	-2.456
2020/2/7 12:00	6.39	-1.871	6.70	-2.517
2020/2/14 12:00	6.44	-1.825	6.69	-2.532
2020/2/21 12:00	6.37	-1.994	6.68	-2.544
2020/2/28 12:00	6.37	-1.993	6.67	-2.549
2020/3/6 12:00	6.39	-1.974	6.66	-2.560
2020/3/13 12:00	6.38	-1.976	6.68	-2.537
2020/3/20 12:00	6.51	-1.854	6.71	-2.511
1段階目水位	6.96	-1.40	6.96	-2.26
2段階目水位	6.80	-1.57	6.80	-2.43
最終水位	6.63	-1.73	6.63	-2.59

[沈下量]

事業区域名 計測地点名 計測日	11丁目(民地部)	
	11F 1 沈下量 (cm)	11F 2 沈下量 (cm)
2017/11/25 12:00	0.0	0.0
2017/12/25 12:00	0.2	0.2
2018/1/25 12:00	0.3	0.3
2018/1/12 12:00	0.3	0.3
2018/1/19 12:00	0.3	0.3
2018/1/26 12:00	0.3	0.3
2018/2/2 12:00	0.4	0.3
2018/2/9 12:00	0.4	0.3
2018/2/16 12:00	0.4	0.3
2018/2/23 12:00	0.4	0.4
2018/3/2 12:00	0.4	0.3
2018/3/9 12:00	0.4	0.3
2018/3/16 12:00	0.4	0.3
2018/3/23 12:00	0.4	0.3
2018/3/30 12:00	0.4	0.3
2018/4/6 12:00	0.4	0.3
2018/4/13 12:00	0.4	0.3
2018/4/20 12:00	0.4	0.3
2018/4/27 12:00	0.4	0.3
2018/5/4 12:00	0.4	0.3
2018/5/11 12:00	0.4	0.4
2018/5/18 12:00	0.4	0.4
2018/5/25 12:00	0.4	0.4
2018/6/1 12:00	0.5	0.4
2018/6/8 12:00	0.5	0.4
2018/6/15 12:00	0.5	0.5
2018/6/22 12:00	0.5	0.5
2018/6/29 12:00	0.6	0.5
2018/7/6 12:00	0.6	0.6
2018/7/13 12:00	0.6	0.6
2018/7/20 12:00	0.7	0.6
2018/7/27 12:00	0.7	0.7
2018/8/3 12:00	0.7	0.7
2018/8/10 12:00	0.8	0.7
2018/8/17 12:00	0.8	0.8
2018/8/24 12:00	0.9	0.8
2018/8/31 12:00	0.9	0.8
2018/9/7 12:00	0.9	0.8
2018/9/14 12:00	0.9	0.9
2018/9/21 12:00	1.0	0.9
2018/9/28 12:00	1.0	0.9
2018/10/5 12:00	1.0	0.9
2018/10/12 12:00	1.0	0.9
2018/10/19 12:00	1.0	0.9
2018/10/26 12:00	1.0	1.0
2018/11/2 12:00	1.1	1.0
2018/11/9 12:00	1.1	1.0
2018/11/16 12:00	1.1	1.0
2018/11/23 12:00	1.1	1.0
2018/11/30 12:00	1.1	1.1
2018/12/7 12:00	1.2	1.1
2018/12/14 12:00	1.2	1.1
2018/12/21 12:00	1.2	1.1
2018/12/28 12:00	1.2	1.1
2019/1/4 12:00	1.3	1.2
2019/1/11 12:00	1.3	1.2
2019/1/18 12:00	1.3	1.2
2019/1/25 12:00	1.3	1.2
2019/2/1 12:00	1.3	1.3
2019/2/8 12:00	1.4	1.3
2019/2/15 12:00	1.4	1.3
2019/2/22 12:00	1.4	1.4
2019/3/1 12:00	1.5	1.4
2019/3/8 12:00	1.5	1.4
2019/3/15 12:00	1.5	1.4
2019/3/22 12:00	1.5	1.4
2019/3/29 12:00	1.5	1.4
2019/4/5 12:00	1.5	1.4
2019/4/12 12:00	1.5	1.4
2019/4/19 12:00	1.5	1.5
2019/4/26 12:00	1.6	1.5
2019/5/3 12:00	1.6	1.5
2019/5/10 12:00	1.6	1.5
2019/5/17 12:00	1.6	1.5
2019/5/24 12:00	1.6	1.5
2019/5/31 12:00	1.6	1.5
2019/6/7 12:00	1.7	1.5
2019/6/14 12:00	1.7	1.6
2019/6/21 12:00	1.7	1.6
2019/6/28 12:00	1.7	1.6
2019/7/5 12:00	1.7	1.6
2019/7/12 12:00	1.7	1.6
2019/7/19 12:00	1.7	1.6
2019/7/26 12:00	1.7	1.6
2019/8/2 12:00	1.7	1.6
2019/8/9 12:00	1.7	1.7
2019/8/16 12:00	1.7	1.7
2019/8/23 12:00	1.8	1.7
2019/8/30 12:00	1.8	1.7
2019/9/6 12:00	1.8	1.7
2019/9/13 12:00	1.8	1.7
2019/9/20 12:00	1.8	1.7
2019/9/27 12:00	1.9	1.8
2019/10/4 12:00	1.9	1.8
2019/10/11 12:00	1.9	1.8
2019/10/18 12:00	1.8	1.7
2019/10/25 12:00	1.8	1.7
2019/11/1 12:00	1.8	1.7
2019/11/8 12:00	1.8	1.7
2019/11/15 12:00	1.9	1.7
2019/11/22 12:00	1.9	1.8
2019/11/29 12:00	1.9	1.7
2019/12/6 12:00	1.9	1.8
2019/12/13 12:00	1.9	1.8
2019/12/20 12:00	1.9	1.8
2019/12/27 12:00	1.9	1.8
2020/1/3 12:00	2.0	1.8
2020/1/10 12:00	2.0	1.8
2020/1/17 12:00	2.0	1.8
2020/1/24 12:00	2.0	1.8
2020/1/31 12:00	2.0	1.8
2020/2/7 12:00	2.1	1.9
2020/2/14 12:00	2.1	1.9
2020/2/21 12:00	2.1	1.9
2020/2/28 12:00	2.1	1.9
2020/3/6 12:00	2.1	1.9
2020/3/13 12:00	2.1	1.9
2020/3/20 12:00	2.1	1.9

[沈下量]					
事業区域名	11丁目(道路部)				
計測地点名	11E 1	11E 2	11E 3	11E 4	11D 1(ボンズ館)
計測日	沈下量 (cm)	沈下量 (cm)	沈下量 (cm)	沈下量 (cm)	沈下量 (cm)
2017/11/25 12:00	0.0	0.0	0.0	0.0	0.0
2017/12/25 12:00	0.1	0.1	0.1	0.1	0.0
2018/1/25 12:00	0.2	0.1	0.1	0.1	0.1
2018/1/12 12:00	0.2	0.2	0.1	0.1	0.1
2018/1/19 12:00	0.2	0.2	0.2	0.2	0.1
2018/1/26 12:00	0.2	0.2	0.2	0.2	0.1
2018/2/2 12:00	0.2	0.3	0.2	0.2	0.1
2018/2/9 12:00	0.3	0.3	0.2	0.3	0.2
2018/2/16 12:00	0.3	0.3	0.2	0.3	0.2
2018/2/23 12:00	0.3	0.3	0.2	0.3	0.2
2018/3/2 12:00	0.3	0.3	0.2	0.3	0.2
2018/3/9 12:00	0.3	0.4	0.2	0.3	0.2
2018/3/16 12:00	0.3	0.3	0.2	0.3	0.2
2018/3/23 12:00	0.3	0.3	0.2	0.3	0.2
2018/3/30 12:00	0.3	0.3	0.2	0.3	0.3
2018/4/6 12:00	0.3	0.3	0.2	0.3	0.2
2018/4/13 12:00	0.3	0.3	0.2	0.3	0.3
2018/4/20 12:00	0.3	0.3	0.2	0.3	0.3
2018/4/27 12:00	0.3	0.3	0.2	0.3	0.3
2018/5/4 12:00	0.3	0.3	0.2	0.3	0.3
2018/5/11 12:00	0.3	0.4	0.2	0.3	0.3
2018/5/18 12:00	0.3	0.4	0.2	0.3	0.3
2018/5/25 12:00	0.3	0.4	0.2	0.4	0.3
2018/6/1 12:00	0.3	0.4	0.3	0.4	0.3
2018/6/8 12:00	0.3	0.4	0.3	0.4	0.4
2018/6/15 12:00	0.4	0.4	0.3	0.4	0.4
2018/6/22 12:00	0.4	0.5	0.3	0.5	0.4
2018/6/29 12:00	0.4	0.5	0.3	0.5	0.4
2018/7/6 12:00	0.4	0.5	0.3	0.6	0.4
2018/7/13 12:00	0.5	0.6	0.3	0.6	0.4
2018/7/20 12:00	0.5	0.6	0.4	0.6	0.4
2018/7/27 12:00	0.5	0.6	0.4	0.6	0.5
2018/8/3 12:00	0.5	0.7	0.4	0.7	0.5
2018/8/10 12:00	0.5	0.7	0.4	0.7	0.5
2018/8/17 12:00	0.6	0.8	0.5	0.7	0.5
2018/8/24 12:00	0.6	0.8	0.5	0.8	0.6
2018/8/31 12:00	0.6	0.8	0.5	0.8	0.6
2018/9/7 12:00	0.6	0.9	0.5	0.8	0.6
2018/9/14 12:00	0.7	0.9	0.6	0.8	0.7
2018/9/21 12:00	0.7	0.9	0.6	0.8	0.7
2018/9/28 12:00	0.7	0.9	0.6	0.8	0.7
2018/10/5 12:00	0.7	1.0	0.6	0.8	0.7
2018/10/12 12:00	0.7	1.0	0.6	0.8	0.7
2018/10/19 12:00	0.7	1.0	0.6	0.8	0.7
2018/10/26 12:00	0.7	1.0	0.6	0.9	0.7
2018/11/2 12:00	0.7	1.0	0.6	0.9	0.7
2018/11/9 12:00	0.8	1.0	0.6	0.9	0.7
2018/11/16 12:00	0.8	1.0	0.6	0.9	0.7
2018/11/23 12:00	0.8	1.0	0.6	0.9	0.7
2018/11/30 12:00	0.8	1.0	0.7	0.9	0.8
2018/12/7 12:00	0.8	1.1	0.6	0.9	0.8
2018/12/14 12:00	0.8	1.1	0.7	0.9	0.8
2018/12/21 12:00	0.9	1.1	0.7	1.0	0.8
2018/12/28 12:00	0.9	1.1	0.7	0.9	0.8
2019/1/4 12:00	0.9	1.1	0.7	1.0	0.8
2019/1/11 12:00	0.9	1.1	0.7	1.0	0.8
2019/1/18 12:00	0.9	1.2	0.7	1.0	0.8
2019/1/25 12:00	0.9	1.2	0.7	1.0	0.8
2019/2/1 12:00	0.9	1.2	0.8	1.0	0.8
2019/2/8 12:00	1.0	1.2	0.8	1.1	0.9
2019/2/15 12:00	1.0	1.3	0.8	1.1	0.9
2019/2/22 12:00	1.0	1.3	0.8	1.1	0.9
2019/3/1 12:00	1.0	1.3	0.8	1.1	0.9
2019/3/8 12:00	1.0	1.3	0.8	1.1	0.9
2019/3/15 12:00	1.1	1.3	0.8	1.2	0.9
2019/3/22 12:00	1.1	1.3	0.8	1.1	0.9
2019/3/29 12:00	1.1	1.4	0.8	1.2	0.9
2019/4/5 12:00	1.1	1.4	0.8	1.2	0.9
2019/4/12 12:00	1.1	1.4	0.9	1.2	1.0
2019/4/19 12:00	1.1	1.4	0.9	1.2	1.0
2019/4/26 12:00	1.1	1.4	0.9	1.2	1.0
2019/5/3 12:00	1.1	1.4	0.9	1.2	1.0
2019/5/10 12:00	1.1	1.5	0.9	1.3	1.0
2019/5/17 12:00	1.1	1.5	0.9	1.3	1.0
2019/5/24 12:00	1.1	1.5	0.9	1.3	1.0
2019/5/31 12:00	1.2	1.5	0.9	1.3	1.0
2019/6/7 12:00	1.2	1.5	0.9	1.3	1.0
2019/6/14 12:00	1.2	1.6	0.9	1.4	1.0
2019/6/21 12:00	1.2	1.6	0.9	1.4	1.0
2019/6/28 12:00	1.2	1.6	0.9	1.4	1.0
2019/7/5 12:00	1.2	1.6	0.9	1.4	1.0
2019/7/12 12:00	1.2	1.6	0.9	1.4	1.1
2019/7/19 12:00	1.2	1.6	1.0	1.4	1.1
2019/7/26 12:00	1.2	1.6	1.0	1.4	1.1
2019/8/2 12:00	1.2	1.7	1.0	1.4	1.1
2019/8/9 12:00	1.2	1.7	1.0	1.4	1.1
2019/8/16 12:00	1.2	1.7	0.9	1.4	1.1
2019/8/23 12:00	1.3	1.7	1.0	1.5	1.1
2019/8/30 12:00	1.3	1.7	1.0	1.5	1.1
2019/9/6 12:00	1.3	1.7	1.0	1.5	1.2
2019/9/13 12:00	1.3	1.8	1.0	1.5	1.2
2019/9/20 12:00	1.3	1.8	1.0	1.5	1.2
2019/9/27 12:00	1.3	1.8	1.0	1.5	1.2
2019/10/4 12:00	1.3	1.8	1.0	1.5	1.2
2019/10/11 12:00	1.3	1.8	1.0	1.5	1.2
2019/10/18 12:00	1.3	1.8	1.0	1.5	1.3
2019/10/25 12:00	1.3	1.8	1.0	1.5	1.2
2019/11/1 12:00	1.3	1.8	1.0	1.5	1.2
2019/11/8 12:00	1.3	1.8	1.0	1.5	1.2
2019/11/15 12:00	1.3	1.8	1.0	1.5	1.2
2019/11/22 12:00	1.4	1.8	1.1	1.5	1.3
2019/11/29 12:00	1.4	1.8	1.0	1.5	1.2
2019/12/6 12:00	1.4	1.8	1.0	1.5	1.2
2019/12/13 12:00	1.4	1.8	1.0	1.5	1.2
2019/12/20 12:00	1.4	1.8	1.0	1.5	1.2
2019/12/27 12:00	1.4	1.8	1.0	1.5	1.2
2020/1/3 12:00	1.4	1.8	1.1	1.5	1.3
2020/1/10 12:00	1.4	1.8	1.1	1.5	1.2
2020/1/17 12:00	1.4	1.8	1.1	1.5	1.3
2020/1/24 12:00	1.4	1.9	1.1	1.5	1.3
2020/1/31 12:00	1.4	1.8	1.1	1.5	1.2
2020/2/7 12:00	1.5	1.9	1.1	1.6	1.3
2020/2/14 12:00	1.5	1.9	1.1	1.6	1.3
2020/2/21 12:00	1.5	1.9	1.1	1.6	1.3
2020/2/28 12:00	1.5	1.9	1.1	1.6	1.3
2020/3/6 12:00	1.5	1.9	1.1	1.6	1.3
2020/3/13 12:00	1.5	1.9	1.1	1.6	1.3
2020/3/20 12:00	1.5	1.9	1.1	1.6	1.3

〔地下水位〕

事業区域名	7・12丁目(民地部)		12丁目(民地部)	
	12F.1	12F.2	12F.2	12F.3
計測地点名	7・12丁目(民地部)		12丁目(民地部)	
計測地点地盤高 (T.P.m)	8.96		9.04	
計測日	地下水 (T.P.m)	地下水 (G.Lm)	地下水 (T.P.m)	地下水 (G.Lm)
	2017/11/25 12:00	7.30	-1.664	7.25
2017/12/25 12:00	6.75	-2.208	6.23	-2.546
2018/1/5 12:00	6.73	-2.233	6.27	-2.508
2018/1/12 12:00	6.71	-2.248	6.31	-2.467
2018/1/19 12:00	6.70	-2.258	6.31	-2.469
2018/1/26 12:00	6.73	-2.231	6.35	-2.430
2018/2/2 12:00	6.72	-2.240	6.38	-2.402
2018/2/9 12:00	6.72	-2.236	6.42	-2.362
2018/2/16 12:00	6.73	-2.232	6.46	-2.318
2018/2/23 12:00	6.69	-2.270	6.46	-2.322
2018/3/2 12:00	6.70	-2.259	6.48	-2.299
2018/3/9 12:00	6.77	-0.187	8.49	-0.288
2018/3/16 12:00	7.19	-1.772	6.76	-2.624
2018/3/23 12:00	6.57	-0.386	7.15	-1.634
2018/3/30 12:00	7.18	-1.779	6.82	-1.984
2018/4/6 12:00	7.19	-1.770	6.91	-1.874
2018/4/13 12:00	7.13	-1.834	6.76	-2.019
2018/4/20 12:00	7.14	-1.817	6.69	-2.093
2018/4/27 12:00	7.26	-1.697	6.70	-2.082
2018/5/4 12:00	7.20	-1.763	6.68	-2.096
2018/5/11 12:00	7.30	-1.655	6.70	-2.083
2018/5/18 12:00	7.30	-1.665	6.70	-2.077
2018/5/25 12:00	7.16	-1.799	6.69	-2.089
2018/6/1 12:00	6.90	-2.057	6.29	-2.495
2018/6/8 12:00	6.96	-1.997	6.31	-2.467
2018/6/15 12:00	6.99	-2.183	6.22	-2.582
2018/6/22 12:00	6.81	-2.154	6.18	-2.596
2018/6/29 12:00	6.79	-2.173	6.15	-2.635
2018/7/6 12:00	6.79	-2.175	6.14	-2.642
2018/7/13 12:00	6.80	-2.157	6.15	-2.630
2018/7/20 12:00	6.82	-2.142	6.17	-2.610
2018/7/27 12:00	6.83	-2.129	6.13	-2.652
2018/8/3 12:00	6.64	-2.323	5.87	-2.914
2018/8/10 12:00	6.62	-2.344	5.79	-2.994
2018/8/17 12:00	6.59	-2.366	5.75	-3.030
2018/8/24 12:00	6.59	-2.369	5.72	-3.057
2018/8/31 12:00	6.60	-2.361	5.71	-3.072
2018/9/7 12:00	6.67	-2.347	5.73	-3.051
2018/9/14 12:00	6.60	-2.357	5.70	-3.085
2018/9/21 12:00	7.81	-1.147	5.87	-2.911
2018/9/28 12:00	7.33	-1.634	5.82	-2.955
2018/10/5 12:00	6.61	-2.346	5.81	-2.973
2018/10/12 12:00	6.64	-2.320	5.74	-3.038
2018/10/19 12:00	6.62	-2.336	5.71	-3.072
2018/10/26 12:00	6.61	-2.351	5.69	-3.087
2018/11/2 12:00	6.60	-2.357	5.69	-3.093
2018/11/9 12:00	6.62	-2.340	5.69	-3.094
2018/11/16 12:00	6.60	-2.357	5.69	-3.088
2018/11/23 12:00	6.60	-2.360	5.70	-3.082
2018/11/30 12:00	6.58	-2.383	5.71	-3.075
2018/12/7 12:00	6.59	-2.373	5.70	-3.082
2018/12/14 12:00	6.56	-2.398	5.70	-3.082
2018/12/21 12:00	6.53	-2.429	5.69	-3.088
2018/12/28 12:00	6.54	-2.420	5.69	-3.086
2019/1/4 12:00	6.49	-2.474	5.67	-3.107
2019/1/11 12:00	6.52	-2.444	5.67	-3.105
2019/1/18 12:00	6.68	-2.276	5.66	-3.123
2019/1/25 12:00	6.58	-2.385	5.64	-3.136
2019/2/1 12:00	6.56	-2.401	5.64	-3.141
2019/2/8 12:00	15.23	6.268	5.63	-3.150
2019/2/15 12:00	21.19	12.229	5.63	-3.154
2019/2/22 12:00	20.43	11.683	5.63	-3.153
2019/3/1 12:00	6.48	-2.470	5.62	-3.164
2019/3/8 12:00	6.48	-2.462	5.64	-3.142
2019/3/15 12:00	6.58	-2.385	5.59	-3.195
2019/3/22 12:00	6.55	-2.414	5.72	-3.064
2019/3/29 12:00	6.50	-2.461	5.58	-3.197
2019/4/5 12:00	6.52	-2.442	5.61	-3.167
2019/4/12 12:00	6.50	-2.464	5.60	-3.176
2019/4/19 12:00	6.51	-2.449	5.61	-3.167
2019/4/26 12:00	6.50	-2.459	5.60	-3.175
2019/5/3 12:00	6.52	-2.437	5.56	-3.220
2019/5/10 12:00	6.51	-2.452	5.57	-3.207
2019/5/17 12:00	6.48	-2.465	5.57	-3.205
2019/5/24 12:00	6.52	-2.441	5.55	-3.225
2019/5/31 12:00	6.48	-2.477	5.55	-3.231
2019/6/7 12:00	6.45	-2.508	5.57	-3.205
2019/6/14 12:00	6.50	-2.461	5.58	-3.202
2019/6/21 12:00	6.51	-2.445	5.59	-3.193
2019/6/28 12:00	6.57	-2.387	5.74	-3.044
2019/7/5 12:00	6.94	-2.023	6.02	-2.757
2019/7/12 12:00	6.52	-2.439	5.64	-3.139
2019/7/19 12:00	6.64	-2.325	5.67	-3.107
2019/7/26 12:00	6.52	-2.438	5.60	-3.181
2019/8/2 12:00	6.50	-2.465	5.54	-3.237
2019/8/9 12:00	6.48	-2.487	5.55	-3.234
2019/8/16 12:00	6.46	-2.511	5.55	-3.228
2019/8/23 12:00	6.43	-2.525	5.55	-3.235
2019/8/30 12:00	6.45	-2.508	5.60	-3.178
2019/9/6 12:00	6.42	-2.535	5.56	-3.220
2019/9/13 12:00	6.51	-2.451	5.56	-3.216
2019/9/20 12:00	6.45	-2.508	5.55	-3.231
2019/9/27 12:00	6.43	-2.530	5.53	-3.249
2019/10/4 12:00	6.43	-2.535	5.54	-3.242
2019/10/11 12:00	6.40	-2.564	5.52	-3.255
2019/10/18 12:00	6.66	-2.304	5.81	-2.965
2019/10/25 12:00	6.51	-0.446	6.61	-2.168
2019/11/1 12:00	6.56	-2.400	5.60	-3.175
2019/11/8 12:00	6.47	-2.492	5.54	-3.242
2019/11/15 12:00	6.42	-2.536	5.51	-3.275
2019/11/22 12:00	6.39	-2.573	5.56	-3.225
2019/11/29 12:00	6.50	-2.463	5.62	-3.163
2019/12/6 12:00	6.43	-2.526	5.60	-3.179
2019/12/13 12:00	6.47	-2.492	5.56	-3.220
2019/12/20 12:00	6.47	-2.488	5.56	-3.222
2019/12/27 12:00	6.51	-2.450	5.59	-3.195
2020/1/3 12:00	6.47	-2.486	5.54	-3.240
2020/1/10 12:00	6.46	-2.504	5.54	-3.241
2020/1/17 12:00	6.44	-2.523	5.54	-3.238
2020/1/24 12:00	6.44	-2.519	5.53	-3.253
2020/1/31 12:00	6.59	-2.363	5.59	-3.194
2020/2/7 12:00	6.38	-2.584	5.54	-3.239
2020/2/14 12:00	6.42	-2.542	5.55	-3.230
2020/2/21 12:00	6.41	-2.553	5.52	-3.256
2020/2/28 12:00	6.44	-2.520	5.53	-3.254
2020/3/6 12:00	6.44	-2.524	5.53	-3.253
2020/3/13 12:00	6.39	-2.565	5.53	-3.251
2020/3/20 12:00	6.44	-2.521	5.56	-3.223
1段階目水位 2018/2/24まで	7.07	-1.890	6.20	-2.580
2段階目水位 2018/5/24まで	6.86	-2.100	6.12	-2.660
最終水位 2018/8/24まで	6.65	-2.320	6.04	-2.740

[沈下量]

事業区域名 計測地点名	7・12丁目(民地部)		
	12F 1	12F 2	12F 3
計測日	沈下量 (cm)	沈下量 (cm)	沈下量 (cm)
2017/11/25 12:00	0.0	0.0	0.0
2017/12/25 12:00	0.1	0.2	0.1
2018/1/25 12:00	0.2	0.3	0.1
2018/1/12 12:00	0.2	0.3	0.1
2018/1/19 12:00	0.3	0.4	0.2
2018/1/26 12:00	0.3	0.4	0.2
2018/2/2 12:00	0.3	0.4	0.2
2018/2/9 12:00	0.3	0.4	0.2
2018/2/16 12:00	0.4	0.4	0.2
2018/2/23 12:00	0.4	0.5	0.3
2018/3/2 12:00	0.4	0.5	0.3
2018/3/9 12:00	0.4	0.5	0.3
2018/3/16 12:00	0.4	0.5	0.3
2018/3/23 12:00	0.4	0.5	0.3
2018/3/30 12:00	0.4	0.5	0.3
2018/4/6 12:00	0.4	0.5	0.3
2018/4/13 12:00	0.4	0.5	0.3
2018/4/20 12:00	0.4	0.5	0.3
2018/4/27 12:00	0.4	0.5	0.2
2018/5/4 12:00	0.4	0.5	0.2
2018/5/11 12:00	0.4	0.5	0.2
2018/5/18 12:00	0.4	0.5	0.2
2018/5/25 12:00	0.4	0.5	0.2
2018/6/1 12:00	0.5	0.5	0.2
2018/6/8 12:00	0.5	0.5	0.2
2018/6/15 12:00	0.5	0.6	0.2
2018/6/22 12:00	0.5	0.6	0.2
2018/6/29 12:00	0.6	0.6	0.2
2018/7/6 12:00	0.6	0.6	0.2
2018/7/13 12:00	0.6	0.6	0.2
2018/7/20 12:00	0.6	0.6	0.2
2018/7/27 12:00	0.7	0.7	0.2
2018/8/3 12:00	0.7	0.7	0.2
2018/8/10 12:00	0.7	0.7	0.2
2018/8/17 12:00	0.8	0.7	0.2
2018/8/24 12:00	0.8	0.7	0.3
2018/8/31 12:00	0.9	0.8	0.3
2018/9/7 12:00	0.9	0.8	0.3
2018/9/14 12:00	0.9	0.9	0.4
2018/9/21 12:00	0.9	0.9	0.4
2018/9/28 12:00	0.9	0.9	0.4
2018/10/5 12:00	0.9	0.9	0.4
2018/10/12 12:00	0.9	0.9	0.4
2018/10/19 12:00	0.9	0.9	0.4
2018/10/26 12:00	1.0	1.0	0.4
2018/11/2 12:00	1.0	1.0	0.4
2018/11/9 12:00	1.0	1.0	0.5
2018/11/16 12:00	1.0	1.0	0.5
2018/11/23 12:00	1.0	1.1	0.5
2018/11/30 12:00	1.0	1.1	0.5
2018/12/7 12:00	1.1	1.1	0.5
2018/12/14 12:00	1.1	1.2	0.6
2018/12/21 12:00	1.1	1.2	0.6
2018/12/28 12:00	1.1	1.2	0.6
2019/1/4 12:00	1.2	1.2	0.6
2019/1/11 12:00	1.2	1.2	0.6
2019/1/18 12:00	1.2	1.3	0.6
2019/1/25 12:00	1.2	1.3	0.7
2019/2/1 12:00	1.2	1.4	0.7
2019/2/8 12:00	1.3	1.4	0.7
2019/2/15 12:00	1.3	1.4	0.7
2019/2/22 12:00	1.3	1.5	0.8
2019/3/1 12:00	1.3	1.5	0.8
2019/3/8 12:00	1.4	1.5	0.8
2019/3/15 12:00	1.4	1.5	0.7
2019/3/22 12:00	1.3	1.5	0.7
2019/3/29 12:00	1.4	1.5	0.7
2019/4/5 12:00	1.4	1.5	0.7
2019/4/12 12:00	1.4	1.6	0.8
2019/4/19 12:00	1.4	1.6	0.8
2019/4/26 12:00	1.4	1.6	0.7
2019/5/3 12:00	1.4	1.6	0.7
2019/5/10 12:00	1.4	1.6	0.7
2019/5/17 12:00	1.4	1.6	0.7
2019/5/24 12:00	1.5	1.6	0.6
2019/5/31 12:00	1.5	1.6	0.6
2019/6/7 12:00	1.5	1.6	0.6
2019/6/14 12:00	1.5	1.6	0.7
2019/6/21 12:00	1.5	1.6	0.7
2019/6/28 12:00	1.5	1.6	0.7
2019/7/5 12:00	1.5	1.6	0.7
2019/7/12 12:00	1.5	1.7	0.7
2019/7/19 12:00	1.5	1.7	0.7
2019/7/26 12:00	1.5	1.7	0.7
2019/8/2 12:00	1.5	1.7	0.7
2019/8/9 12:00	1.6	1.6	0.7
2019/8/16 12:00	1.6	1.6	0.6
2019/8/23 12:00	1.6	1.7	0.6
2019/8/30 12:00	1.6	1.7	0.7
2019/9/6 12:00	1.6	1.7	0.7
2019/9/13 12:00	1.6	1.7	0.7
2019/9/20 12:00	1.6	1.7	0.7
2019/9/27 12:00	1.7	1.8	0.8
2019/10/4 12:00	1.7	1.7	0.8
2019/10/11 12:00	1.7	1.8	0.8
2019/10/18 12:00	1.7	1.8	0.8
2019/10/25 12:00	1.7	1.8	0.7
2019/11/1 12:00	1.6	1.7	0.7
2019/11/8 12:00	1.6	1.7	0.7
2019/11/15 12:00	1.6	1.8	0.7
2019/11/22 12:00	1.7	1.8	0.8
2019/11/29 12:00	1.7	1.8	0.8
2019/12/6 12:00	1.7	1.8	0.8
2019/12/13 12:00	1.7	1.8	0.8
2019/12/20 12:00	1.7	1.8	0.8
2019/12/27 12:00	1.7	1.8	0.8
2020/1/3 12:00	1.7	1.8	0.8
2020/1/10 12:00	1.7	1.8	0.8
2020/1/17 12:00	1.7	1.9	0.8
2020/1/24 12:00	1.7	1.9	0.9
2020/1/31 12:00	1.7	1.9	0.8
2020/2/7 12:00	1.8	1.9	0.9
2020/2/14 12:00	1.8	1.9	0.9
2020/2/21 12:00	1.8	2.0	0.9
2020/2/28 12:00	1.8	1.9	0.9
2020/3/6 12:00	1.8	1.9	0.9
2020/3/13 12:00	1.8	2.0	0.9
2020/3/20 12:00	1.8	2.0	0.9

[地下水位]

事業区域名	11B.2		12W.6		12W.8	
計画地点名	T.P.m		T.P.m		T.P.m	
計測地点地盤高 (T.P.m)	8.36		8.71		8.43	
計測日	地下水 (T.P.m)	地下水 (G.L.m)	地下水 (T.P.m)	地下水 (G.L.m)	地下水 (T.P.m)	地下水 (G.L.m)
2017/11/25 12:00	6.13	-2.250	7.81	-1.105	7.12	-1.310
2017/12/25 12:00	6.08	-2.300	7.32	-1.294	6.88	-1.549
2018/1/5 12:00	6.07	-2.308	7.24	-1.488	6.79	-1.838
2018/1/12 12:00	6.07	-2.312	7.21	-1.498	6.75	-1.879
2018/1/19 12:00	6.07	-2.308	7.18	-1.526	6.75	-1.878
2018/1/26 12:00	6.09	-2.291	7.23	-1.479	6.83	-1.603
2018/2/2 12:00	6.10	-2.281	7.23	-1.479	6.81	-1.621
2018/2/9 12:00	6.09	-2.292	7.28	-1.427	6.78	-1.649
2018/2/16 12:00	6.08	-2.296	7.26	-1.449	6.75	-1.681
2018/2/23 12:00	6.09	-2.289	7.22	-1.492	6.73	-1.705
2018/3/2 12:00	6.12	-2.260	7.45	-1.259	6.83	-1.598
2018/3/9 12:00	6.39	-1.985	8.02	-0.692	7.64	-0.789
2018/3/16 12:00	6.22	-2.158	7.77	-0.943	7.17	-1.264
2018/3/23 12:00	6.33	-2.048	7.89	-0.818	7.38	-1.052
2018/3/30 12:00	6.23	-2.152	7.74	-0.989	7.17	-1.259
2018/4/6 12:00	6.23	-2.150	7.67	-1.039	7.11	-1.319
2018/4/13 12:00	6.15	-2.230	7.55	-1.164	7.03	-1.403
2018/4/20 12:00	6.19	-2.192	7.52	-1.193	7.02	-1.409
2018/4/27 12:00	6.30	-2.083	7.72	-0.988	7.14	-1.293
2018/5/4 12:00	6.31	-2.068	7.62	-1.093	7.10	-1.334
2018/5/11 12:00	6.43	-1.946	7.81	-0.898	7.23	-1.198
2018/5/18 12:00	6.35	-2.025	7.78	-0.930	7.19	-1.237
2018/5/25 12:00	6.33	-2.050	7.67	-1.044	7.13	-1.300
2018/6/1 12:00	6.41	-1.974	7.64	-1.066	7.12	-1.310
2018/6/8 12:00	6.26	-2.122	7.55	-1.164	7.07	-1.358
2018/6/15 12:00	6.28	-2.100	7.55	-1.164	7.11	-1.325
2018/6/22 12:00	6.41	-1.973	7.71	-1.004	7.15	-1.278
2018/6/29 12:00	6.22	-2.164	7.55	-1.162	7.08	-1.353
2018/7/6 12:00	6.27	-2.109	7.51	-1.195	7.09	-1.338
2018/7/13 12:00	6.23	-2.146	7.44	-1.268	7.03	-1.403
2018/7/20 12:00	6.24	-2.144	7.37	-1.339	6.95	-1.477
2018/7/27 12:00	6.25	-2.129	7.33	-1.382	6.90	-1.528
2018/8/3 12:00	6.22	-2.163	7.38	-1.333	7.01	-1.420
2018/8/10 12:00	6.22	-2.165	7.35	-1.365	7.01	-1.425
2018/8/17 12:00	6.23	-2.151	7.24	-1.470	6.90	-1.533
2018/8/24 12:00	6.17	-2.211	7.16	-1.549	6.83	-1.604
2018/8/31 12:00	6.18	-2.199	7.11	-1.604	6.79	-1.640
2018/9/7 12:00	6.17	-2.193	7.35	-1.359	7.00	-1.429
2018/9/14 12:00	6.17	-2.207	7.40	-1.311	7.06	-1.369
2018/9/21 12:00	6.30	-2.084	7.88	-0.827	7.41	-1.020
2018/9/28 12:00	6.50	-1.882	7.89	-0.820	7.41	-1.020
2018/10/5 12:00	6.15	-2.226	7.77	-0.942	7.24	-1.191
2018/10/12 12:00	6.07	-2.312	7.64	-1.070	7.12	-1.311
2018/10/19 12:00	6.06	-2.321	7.55	-1.157	7.05	-1.381
2018/10/26 12:00	6.05	-2.326	7.45	-1.263	6.98	-1.454
2018/11/2 12:00	6.05	-2.332	7.38	-1.328	6.93	-1.501
2018/11/9 12:00	6.08	-2.301	7.45	-1.257	6.92	-1.506
2018/11/16 12:00	6.05	-2.327	7.35	-1.355	6.85	-1.580
2018/11/23 12:00	6.04	-2.340	7.30	-1.412	6.81	-1.624
2018/11/30 12:00	6.04	-2.333	7.24	-1.488	6.78	-1.670
2018/12/7 12:00	6.06	-2.316	7.21	-1.500	6.75	-1.683
2018/12/14 12:00	6.05	-2.328	7.28	-1.428	6.81	-1.616
2018/12/21 12:00	6.02	-2.356	7.21	-1.503	6.76	-1.673
2018/12/28 12:00	6.01	-2.365	7.18	-1.534	6.72	-1.706
2019/1/4 12:00	6.01	-2.367	7.13	-1.576	6.69	-1.736
2019/1/11 12:00	6.02	-2.359	7.11	-1.601	6.67	-1.761
2019/1/18 12:00	6.01	-2.374	7.08	-1.629	6.65	-1.785
2019/1/25 12:00	6.00	-2.378	7.05	-1.656	6.62	-1.813
2019/2/1 12:00	6.02	-2.362	7.04	-1.666	6.61	-1.816
2019/2/8 12:00	6.01	-2.367	7.01	-1.695	6.59	-1.844
2019/2/15 12:00	6.01	-2.370	6.99	-1.718	6.56	-1.871
2019/2/22 12:00	6.01	-2.371	6.98	-1.733	6.54	-1.892
2019/3/1 12:00	6.05	-2.334	7.05	-1.656	6.68	-1.749
2019/3/8 12:00	6.07	-2.315	7.56	-1.154	6.86	-1.573
2019/3/15 12:00	6.10	-2.279	7.70	-1.005	7.05	-1.384
2019/3/22 12:00	6.05	-2.332	7.59	-1.121	6.98	-1.455
2019/3/29 12:00	6.03	-2.352	7.45	-1.260	6.90	-1.530
2019/4/5 12:00	6.06	-2.325	7.42	-1.287	6.90	-1.534
2019/4/12 12:00	6.07	-2.306	7.52	-1.189	6.98	-1.450
2019/4/19 12:00	6.11	-2.267	7.41	-1.302	6.90	-1.533
2019/4/26 12:00	6.18	-2.198	7.39	-1.320	6.93	-1.497
2019/5/3 12:00	6.28	-2.097	7.64	-1.072	7.06	-1.367
2019/5/10 12:00	6.24	-2.137	7.47	-1.244	6.96	-1.466
2019/5/17 12:00	6.23	-2.154	7.38	-1.331	6.90	-1.527
2019/5/24 12:00	6.46	-1.923	7.80	-1.115	7.13	-1.296
2019/5/31 12:00	6.20	-2.184	7.45	-1.280	7.02	-1.407
2019/6/7 12:00	6.19	-2.194	7.37	-1.337	6.95	-1.484
2019/6/14 12:00	6.34	-2.035	7.66	-1.051	7.17	-1.259
2019/6/21 12:00	6.24	-2.136	7.78	-0.926	7.25	-1.177
2019/6/28 12:00	6.25	-2.130	7.85	-0.860	7.26	-1.172
2019/7/5 12:00	6.73	-1.651	7.94	-0.768	7.41	-1.019
2019/7/12 12:00	6.23	-2.148	7.82	-0.895	7.23	-1.202
2019/7/19 12:00	6.30	-2.083	7.94	-0.766	7.36	-1.073
2019/7/26 12:00	6.18	-2.205	7.79	-0.920	7.17	-1.264
2019/8/2 12:00	6.13	-2.250	7.72	-0.994	7.12	-1.309
2019/8/9 12:00	6.14	-2.236	7.80	-1.105	7.04	-1.386
2019/8/16 12:00	6.24	-2.141	7.81	-1.02	7.05	-1.379
2019/8/23 12:00	6.17	-2.213	7.56	-1.145	7.03	-1.401
2019/8/30 12:00	6.18	-2.204	7.67	-1.035	7.16	-1.272
2019/9/6 12:00	6.11	-2.271	7.57	-1.135	7.04	-1.387
2019/9/13 12:00	6.39	-1.986	7.87	-0.836	7.27	-1.158
2019/9/20 12:00	6.05	-2.332	7.77	-0.940	7.14	-1.290
2019/9/27 12:00	6.05	-2.329	7.76	-0.953	7.11	-1.318
2019/10/4 12:00	6.04	-2.343	7.66	-1.045	7.08	-1.349
2019/10/11 12:00	6.01	-2.369	7.55	-1.162	7.00	-1.427
2019/10/18 12:00	6.22	-2.161	7.85	-0.858	7.29	-1.143
2019/10/25 12:00	6.25	-2.130	8.06	-0.651	7.64	-0.786
2019/11/1 12:00	6.10	-2.276	7.81	-0.801	7.28	-1.146
2019/11/8 12:00	6.04	-2.343	7.81	-0.903	7.18	-1.251
2019/11/15 12:00	6.01	-2.366	7.72	-0.992	7.12	-1.306
2019/11/22 12:00	6.01	-2.375	7.59	-1.118	7.05	-1.381
2019/11/29 12:00	6.12	-2.264	7.91	-0.803	-	-
2019/12/6 12:00	5.98	-2.398	7.79	-0.925	-	-
2019/12/13 12:00	5.99	-2.394	7.67	-1.039	-	-
2019/12/20 12:00	5.95	-2.425	7.60	-1.109	-	-
2019/12/27 12:00	5.97	-2.410	7.81	-0.898	-	-
2020/1/3 12:00	5.95	-2.431	7.61	-1.104	-	-
2020/1/10 12:00	5.97	-2.407	7.60	-1.105	-	-
2020/1/17 12:00	5.95	-2.432	7.56	-1.151	-	-
2020/1/24 12:00	5.94	-2.439	7.50	-1.206	-	-
2020/1/31 12:00	6.17	-2.276	7.81	-0.799	-	-
2020/2/7 12:00	6.00	-2.378	7.76	-0.849	-	-
2020/2/14 12:00	5.96	-2.417	7.67	-1.038	-	-
2020/2/21 12:00	5.94	-2.440	7.61	-1.105	-	-
2020/2/28 12:00	5.93	-2.448	7.57	-1.137	-	-
2020/3/6 12:00	5.92	-2.457	7.53	-1.176	-	-
2020/3/13 12:00	5.97	-2.410	7.63	-1.077	-	-
2020/3/20 12:00	5.94	-2.436	7.76	-0.953	-	-