

目 次

1. 概況	1
2. 観測状況一覧	2
3. 地下水位・沈下量・降水量グラフ（4丁目）	3
地下水位・沈下量・降水量グラフ（6丁目）	4
地下水位・沈下量・降水量グラフ（7・12丁目）	5
地下水位・沈下量・降水量グラフ（8丁目）	6
地下水位・沈下量・降水量グラフ（10丁目）	7
地下水位・沈下量・降水量グラフ（11丁目）	8
地下水位・沈下量・降水量グラフ（12丁目）	9
地下水位・降水量グラフ（対象範囲外）	10
4. 地下水位・沈下量データ（4丁目）	11
地下水位・沈下量データ（6丁目）	15
地下水位・沈下量データ（7・12丁目）	17
地下水位・沈下量データ（8丁目）	21
地下水位・沈下量データ（10丁目）	23
地下水位・沈下量データ（11丁目）	25
地下水位・沈下量データ（12丁目）	29
地下水位データ（対象範囲外）	31

[概況]

[測定日]

2021/2/17~26

[概況]

水位につきましては、2021年2月の計測Dにおいて、液状化に対して所定の安全性が確保された状態まで水位が低下しております。沈下に対しては第17回委員会において設定された一次管理値沈下量4cm以下の状態であり、問題はありません。

なお、11丁目において沈下傾向を示す値となっておりますが、現時点では自動計測から手計に変更したことによる計測誤差と判断しております。

引き続き、水位状況、沈下状況を監視しておりますが、第20回委員会において、すべての地区の液状化対策効果の確認および想定内の沈下影響で収まることの確認がなされたことから、自動計測機器の撤去を行いました。

現在は民地内を借地して計測していた箇所を除く地点において、6カ月に1回の頻度で手計による計測（計測D）を継続しております。なお、公園用地内観測点（7F_1,11F_1）は今回のデータをもって全観測終了となります。

※地下水位の測定値はGL表示値とT.P.表示値があります（表示単位：m）。

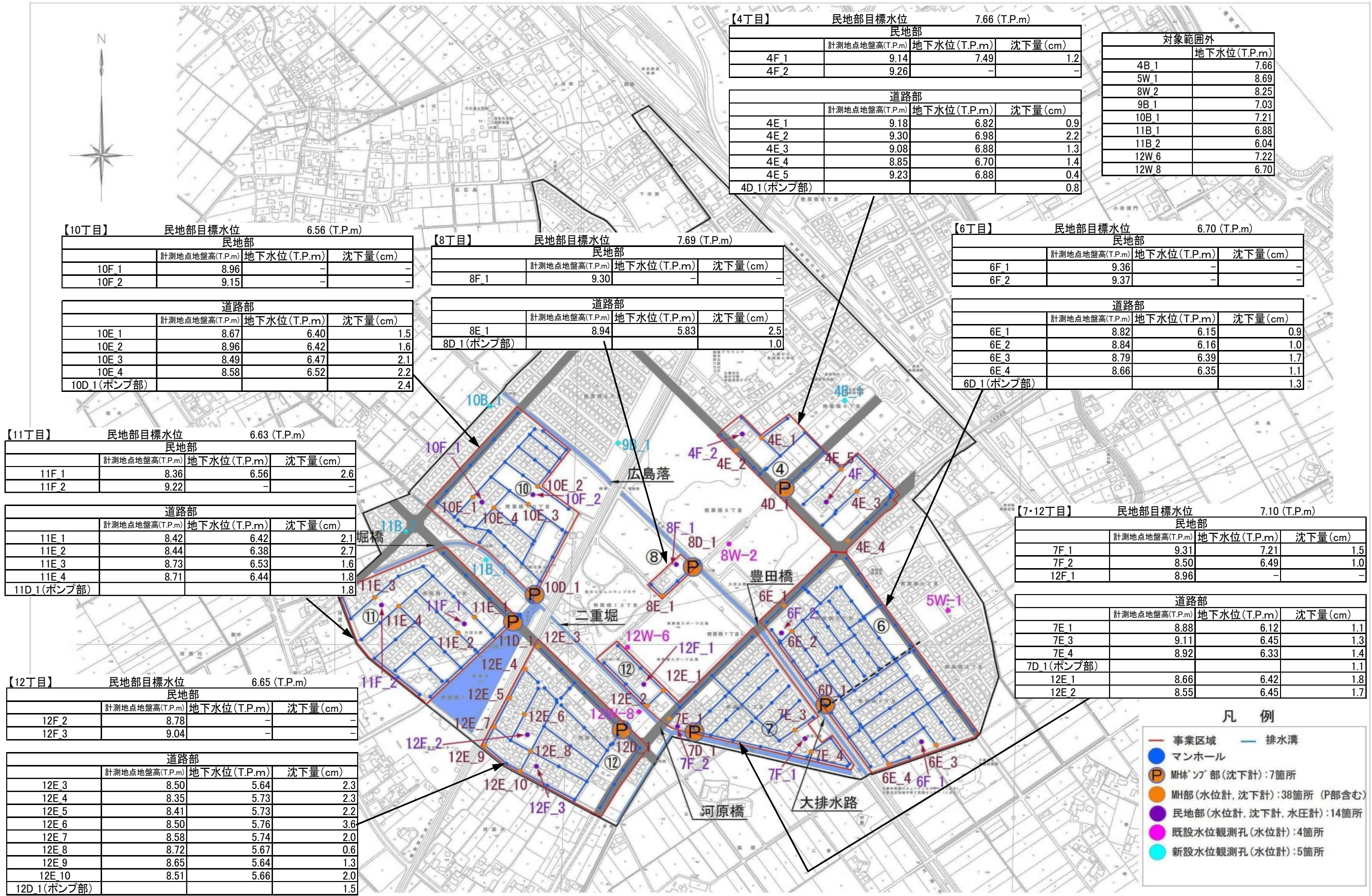
- GLとはGround Level（地盤面）の略です。GL-1.00mは、地盤面から1m下がった高さを表します。
- T.P.とはTokyo Peil（東京湾平均海面）の略です。東京湾の平均海面を0mとした時の高さを表し、測量法にて定めている高さの基準になります。

※降水量データは、気象庁（久喜）観測データを示す。

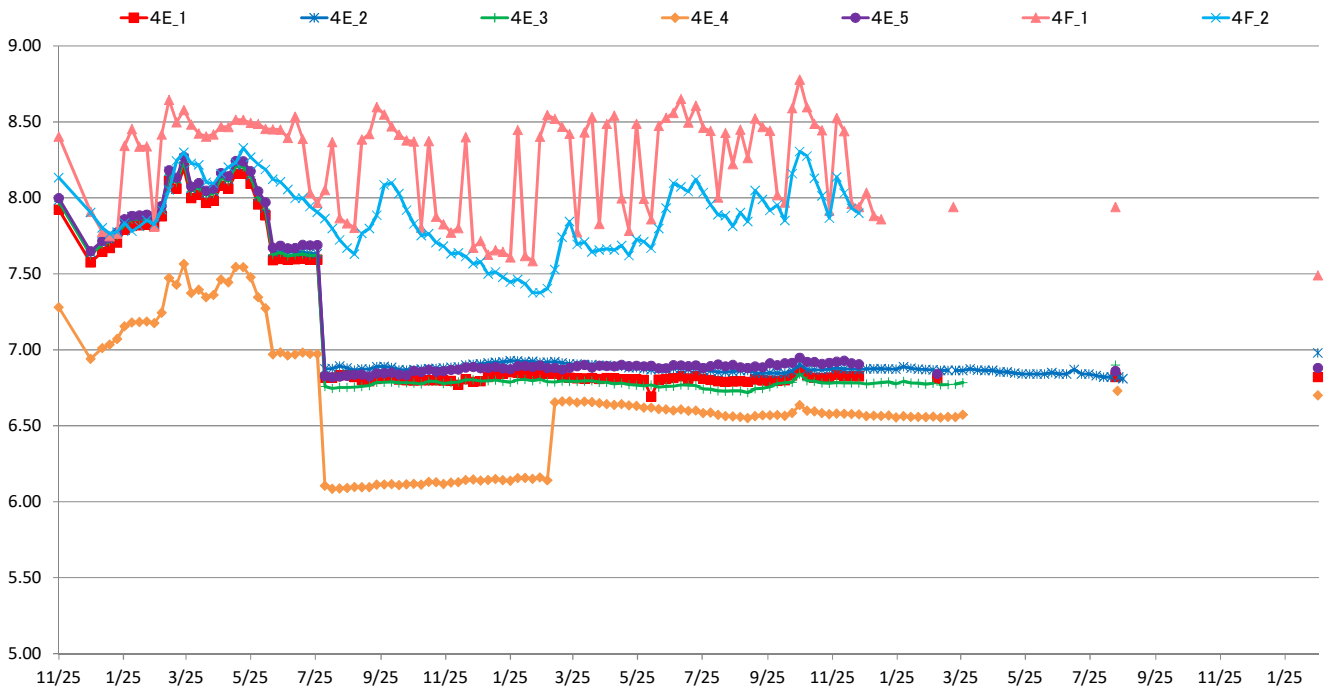
- 計測A（常時測定 沈下：自動観測、水位：自動観測 データは通信管理）
- 計測B（1回測定/1か月 沈下：地表面水準測量、水位：ロープ式水位計）
- 計測C（1回測定/3か月 沈下：地表面水準測量、水位：ロープ式水位計）
- 計測D（1回測定/6か月 沈下：地表面水準測量、水位：ロープ式水位計）
- 計測E（常時測定 沈下：自動観測、水位：自動観測 データは現地で回収 頻度は計測B,C,Dに合わせる）

※日付に時間の記載がない箇所は手計による計測値となります。

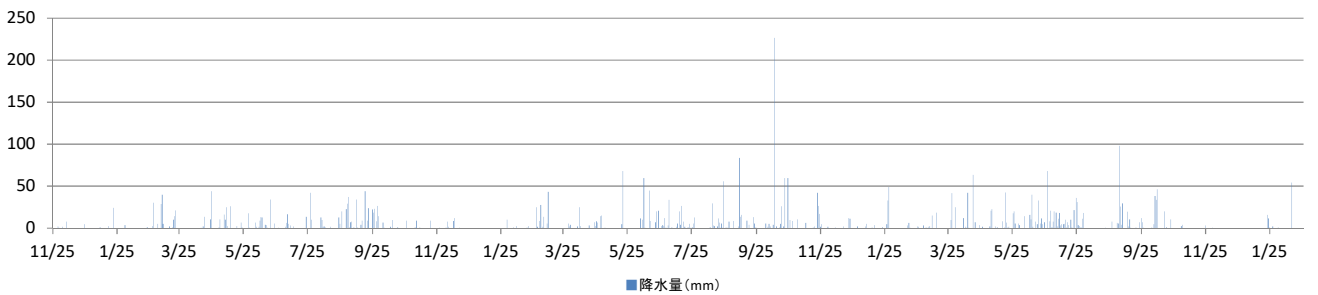
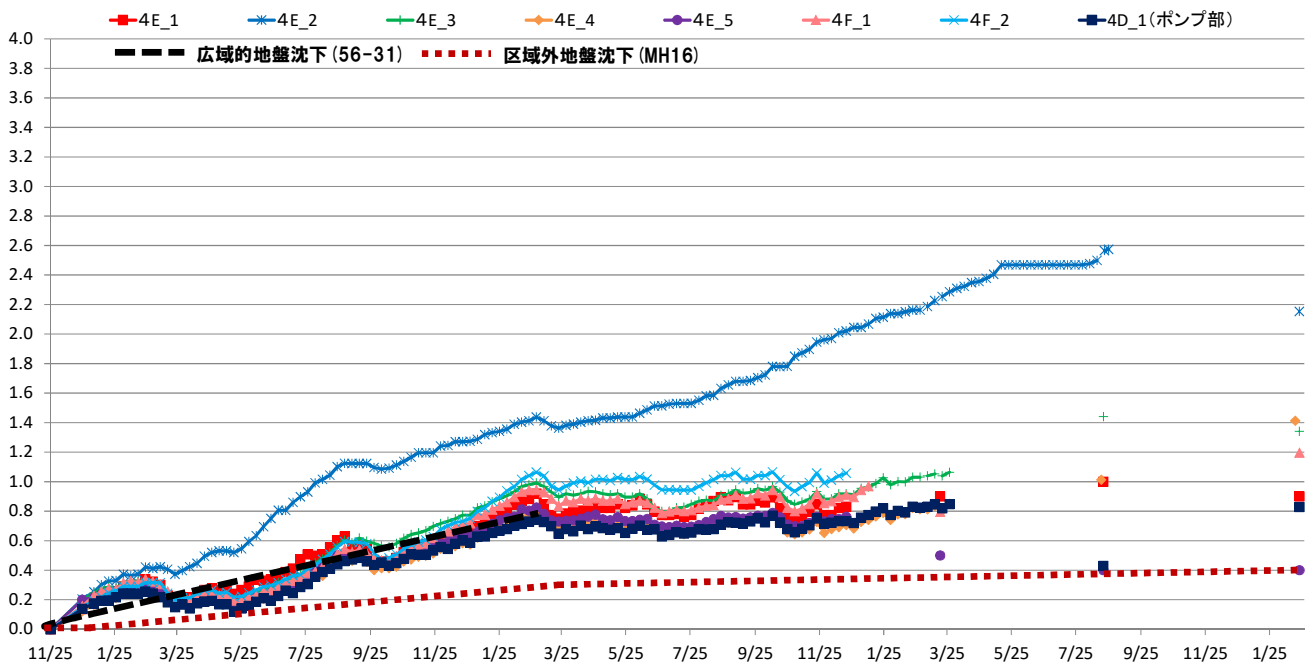
全観測終了地点：4F_2、6F_1、6F_2、8F_1、10F_1、10F_2、11F_2、12F_1、12F_2、12F_3



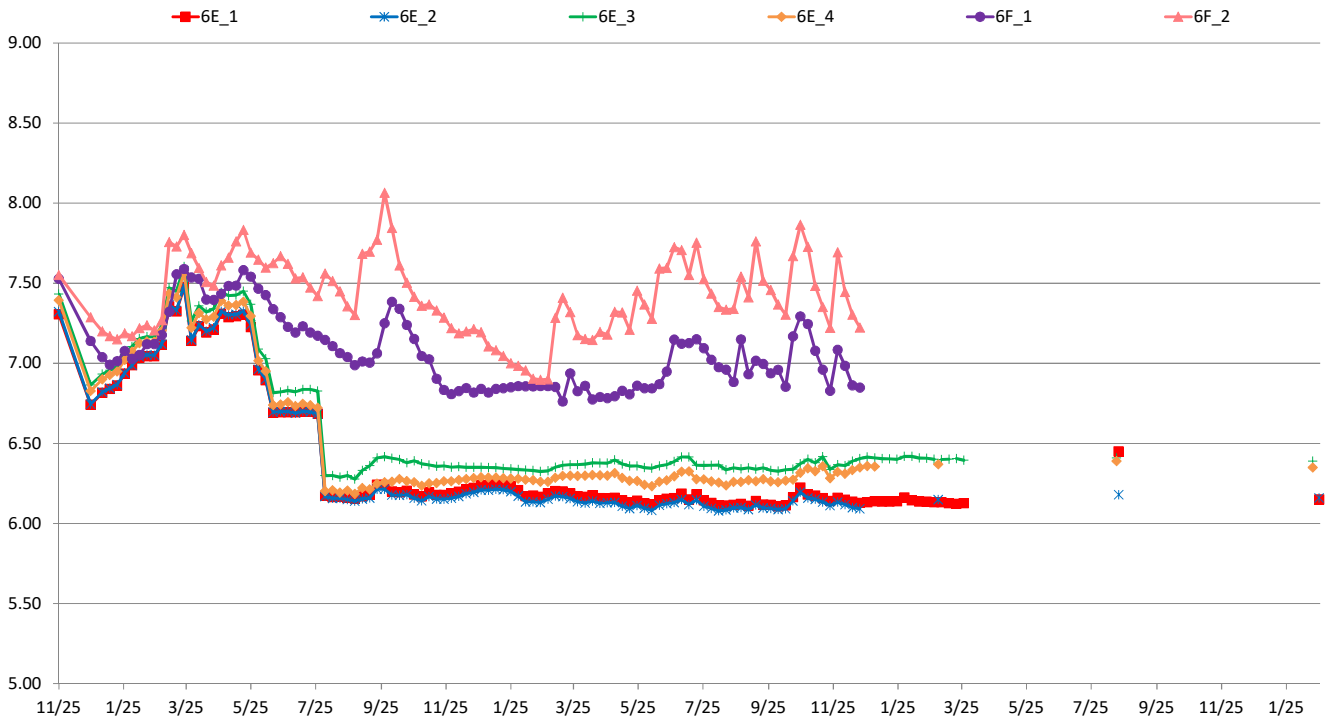
4丁目水位 (T.P+m)



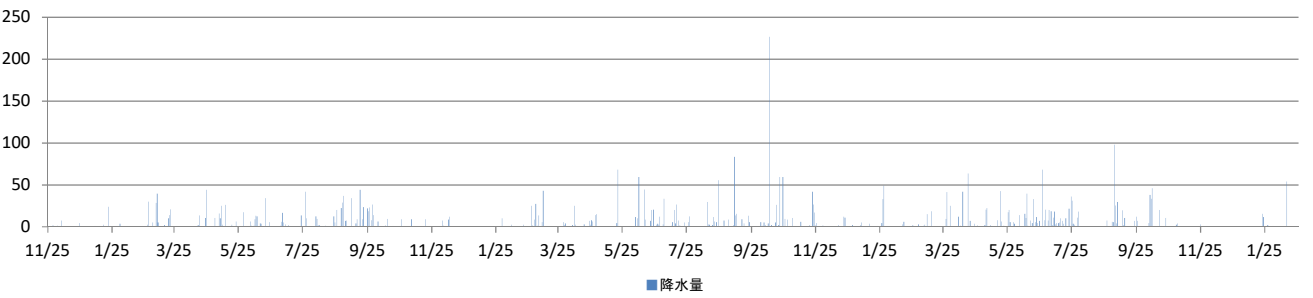
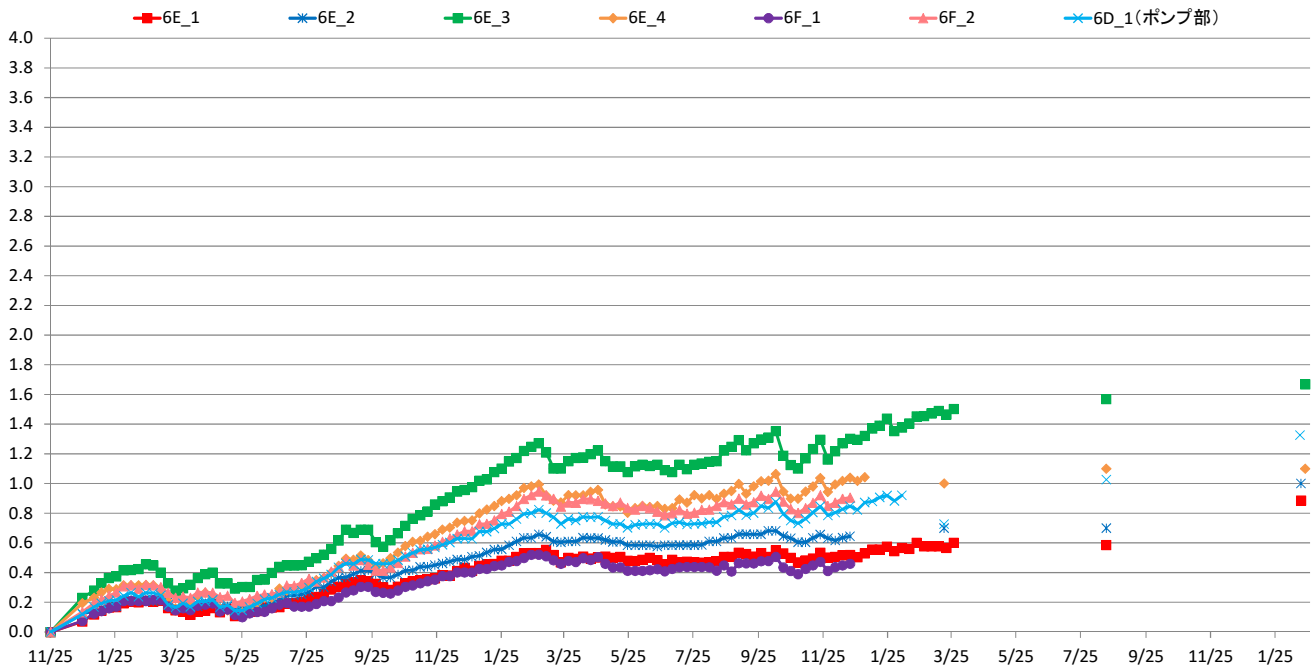
4丁目沈下 (G.L-cm)



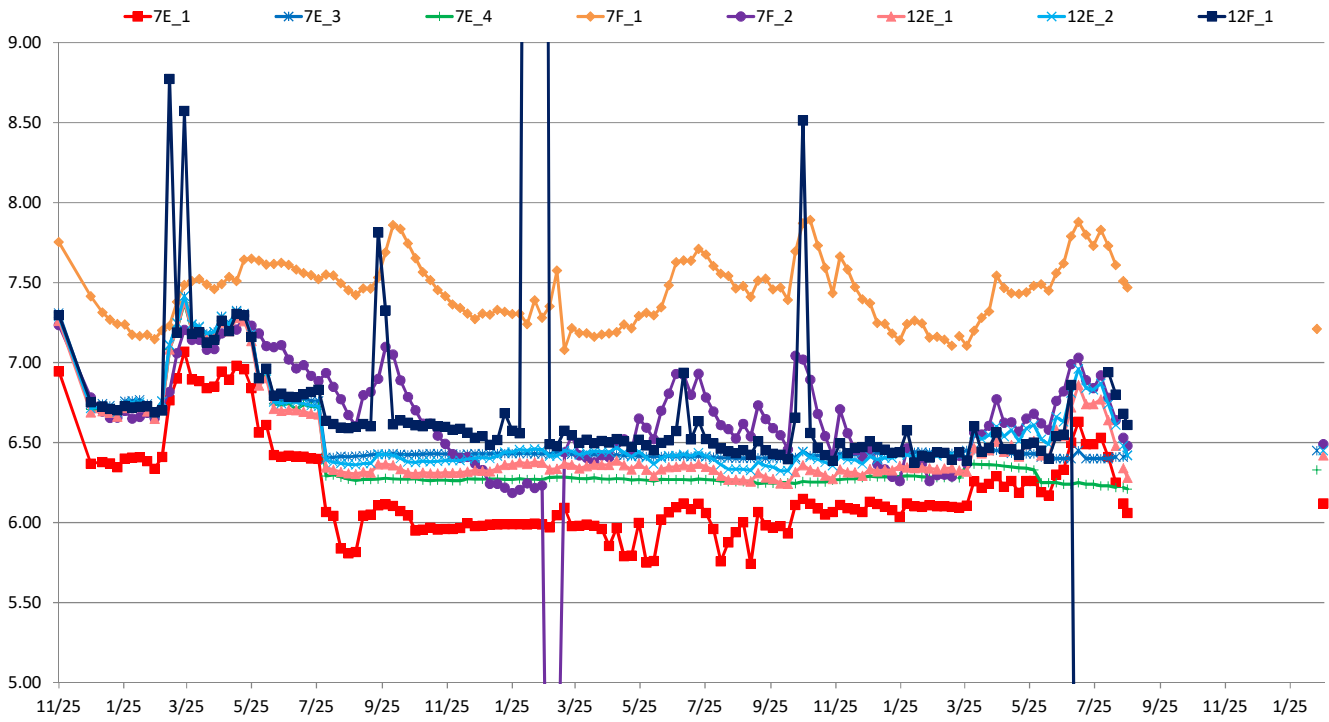
6丁目水位 (T.P+m)



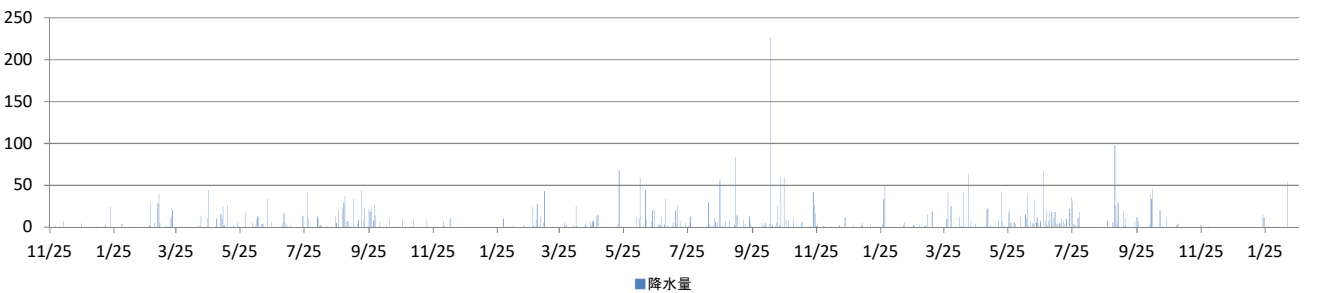
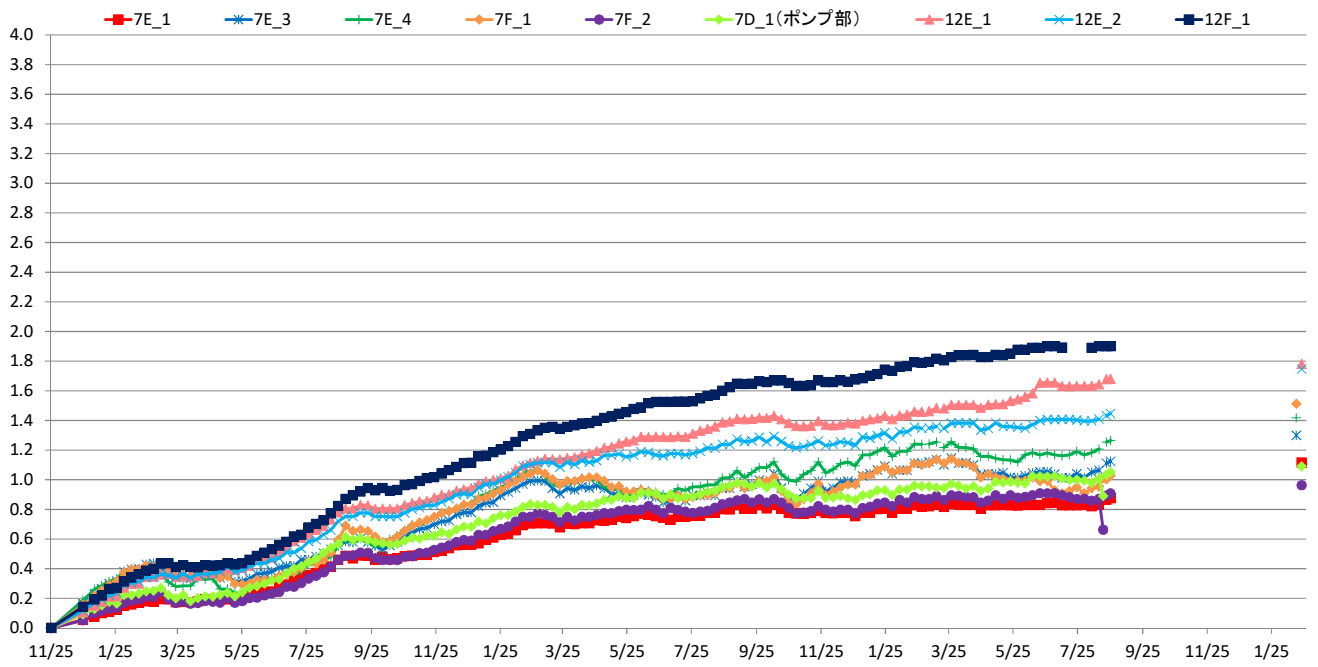
6丁目沈下 (G.L-cm)



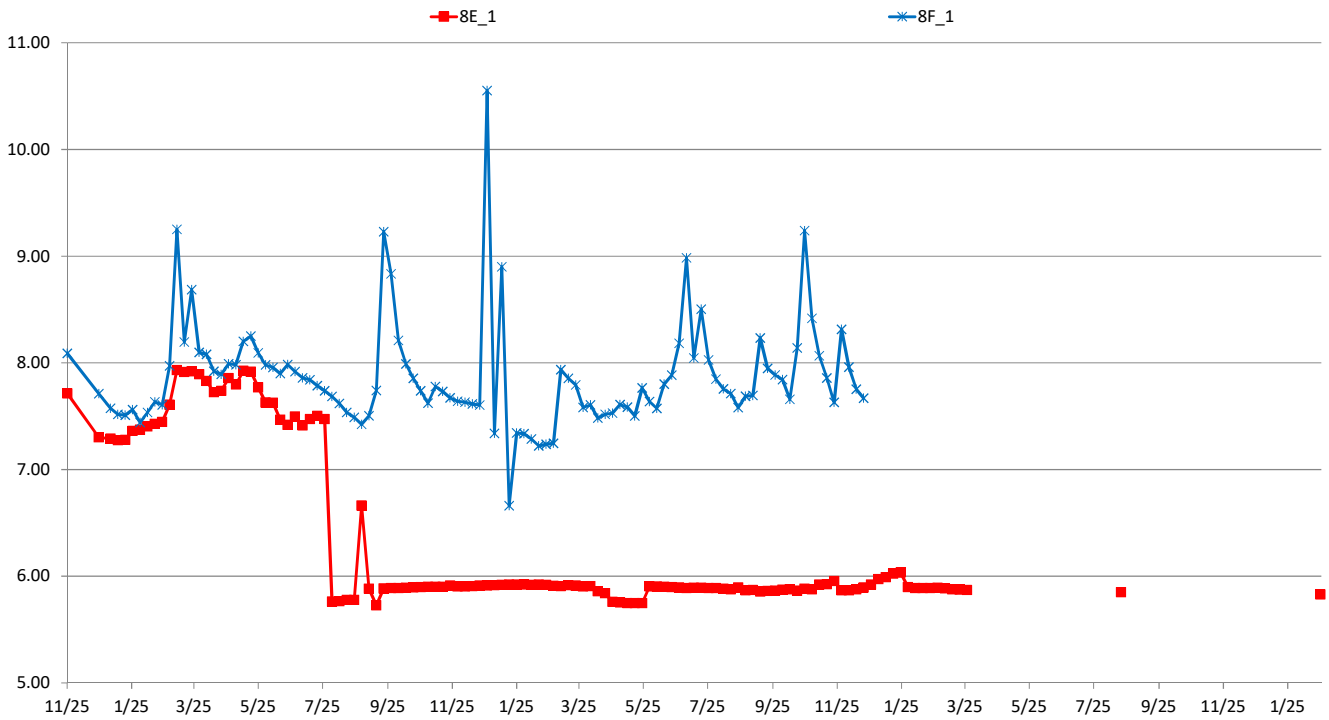
7・12丁目水位 (T.P+m)



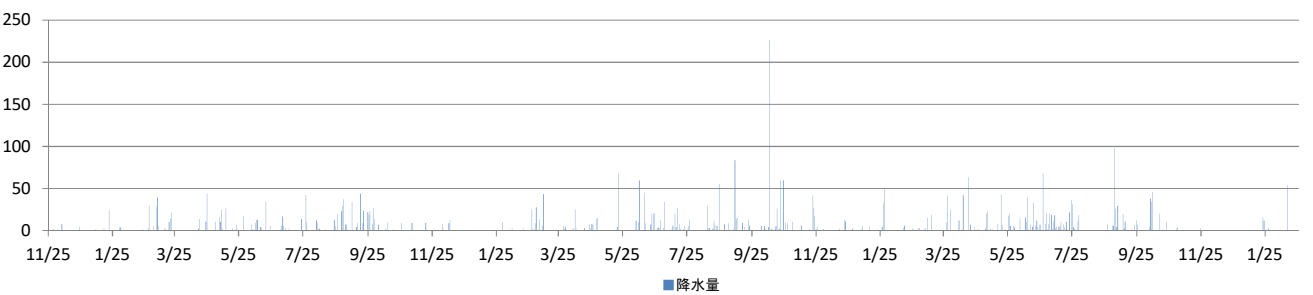
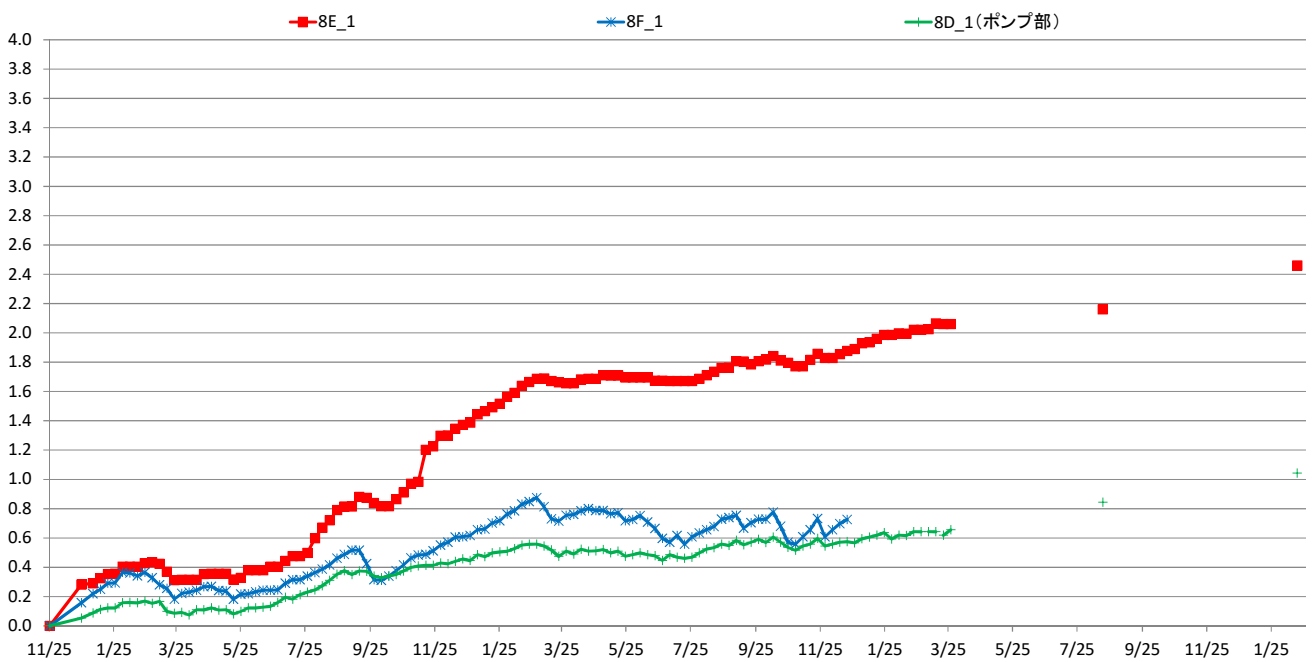
7・12丁目沈下 (G.L-cm)



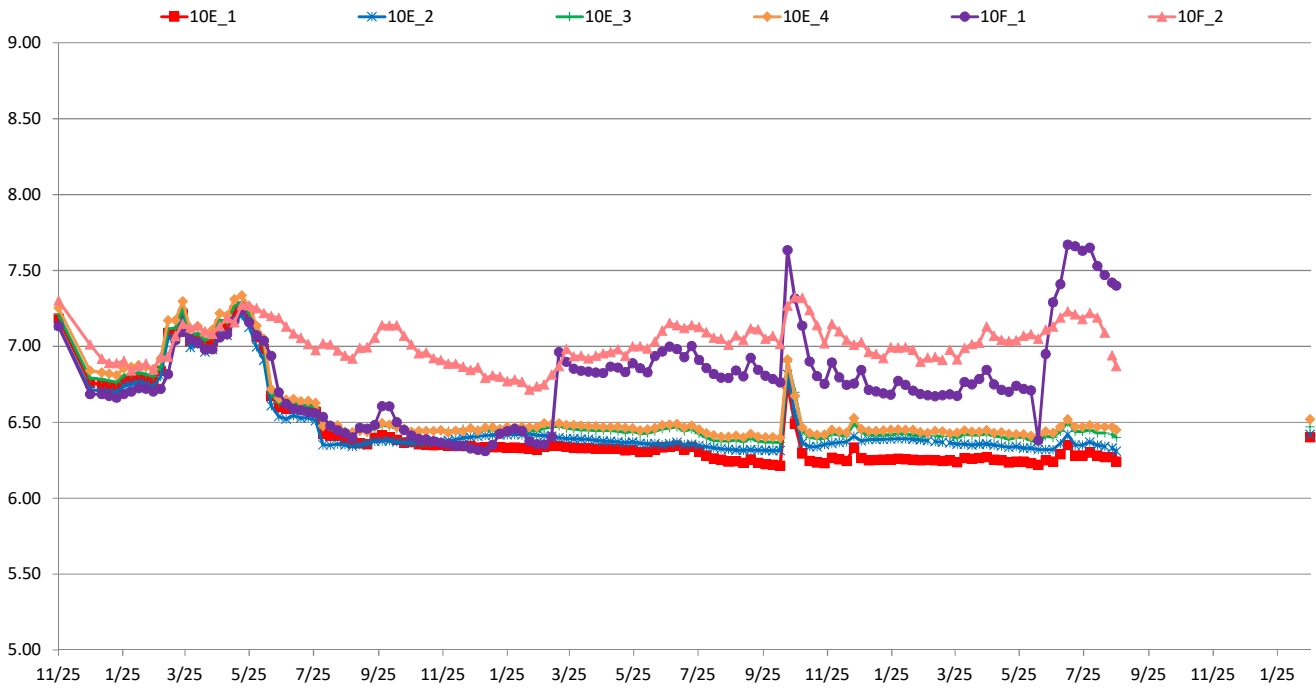
8丁目水位 (T.P+m)



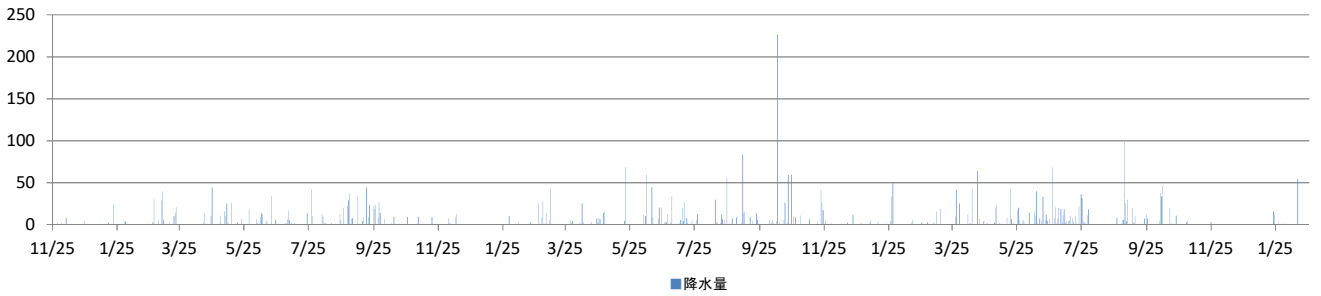
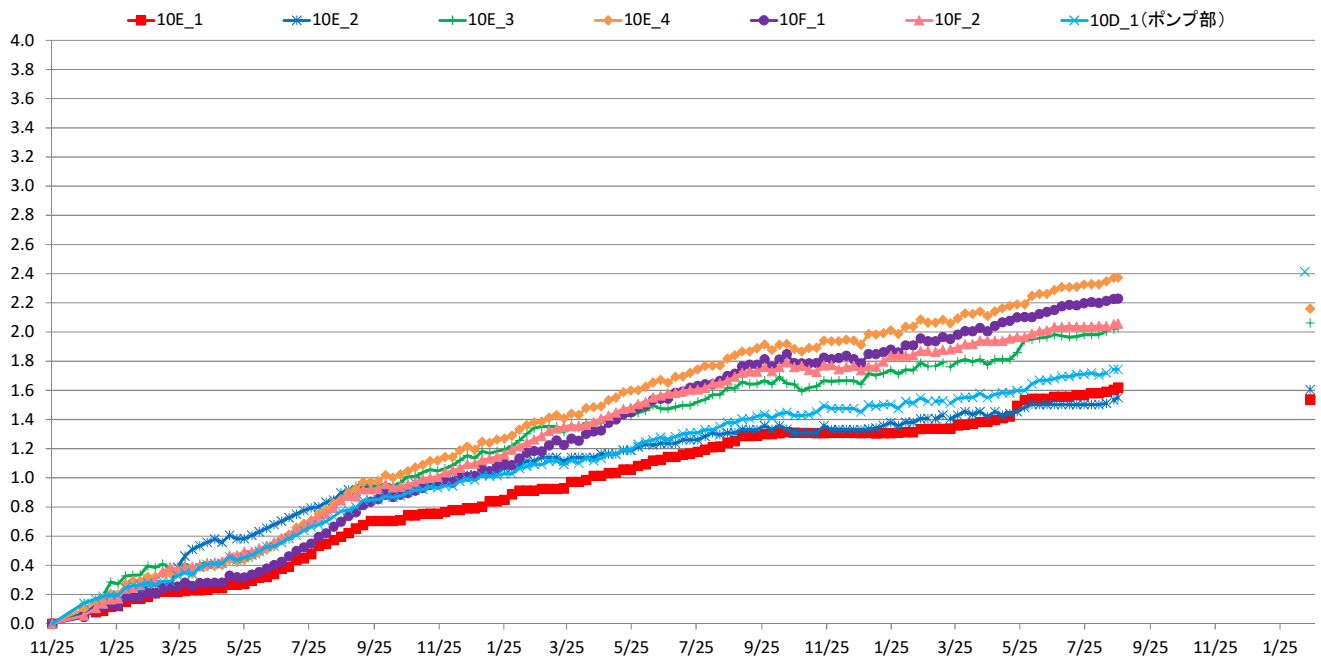
8丁目沈下 (G.L-cm)



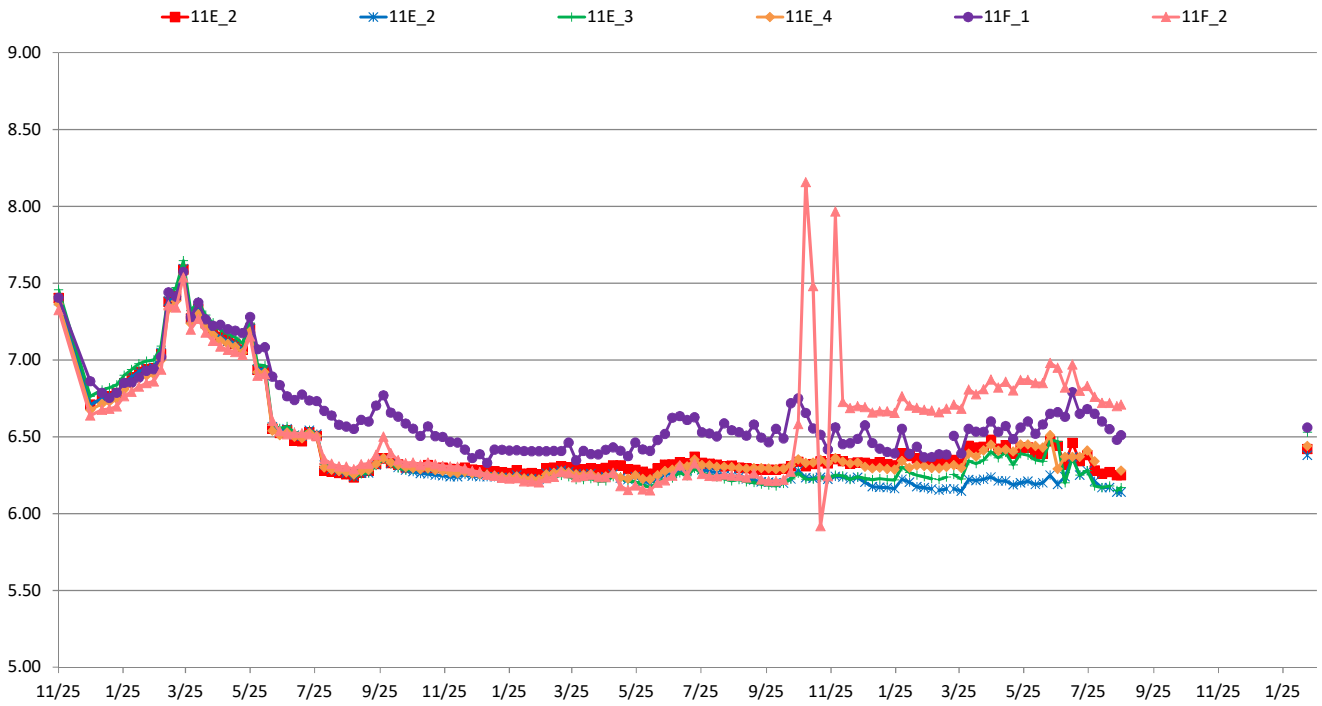
10丁目水位 (T.P+m)



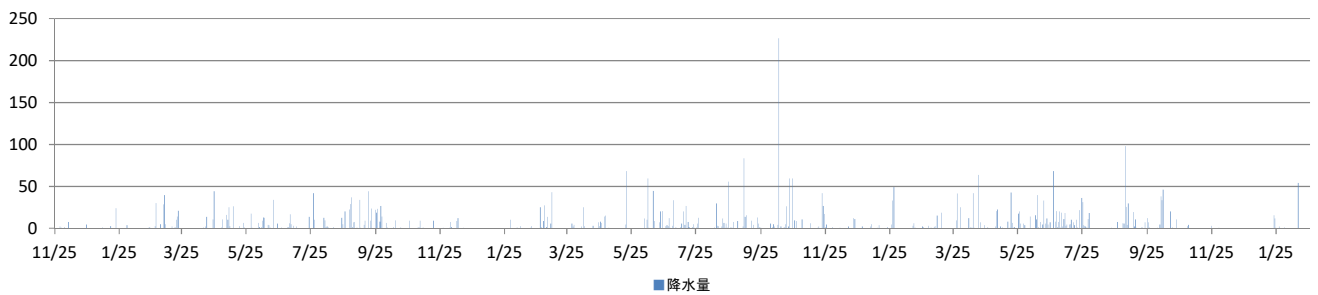
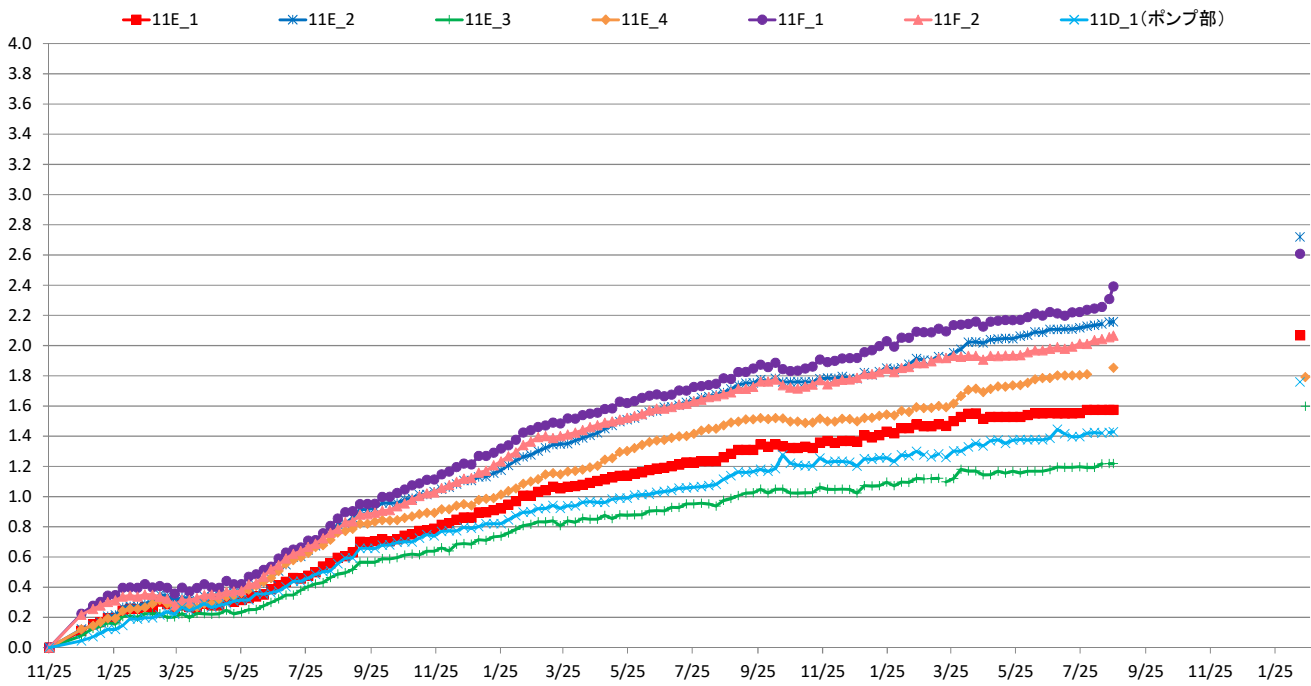
10丁目沈下 (G.L-cm)



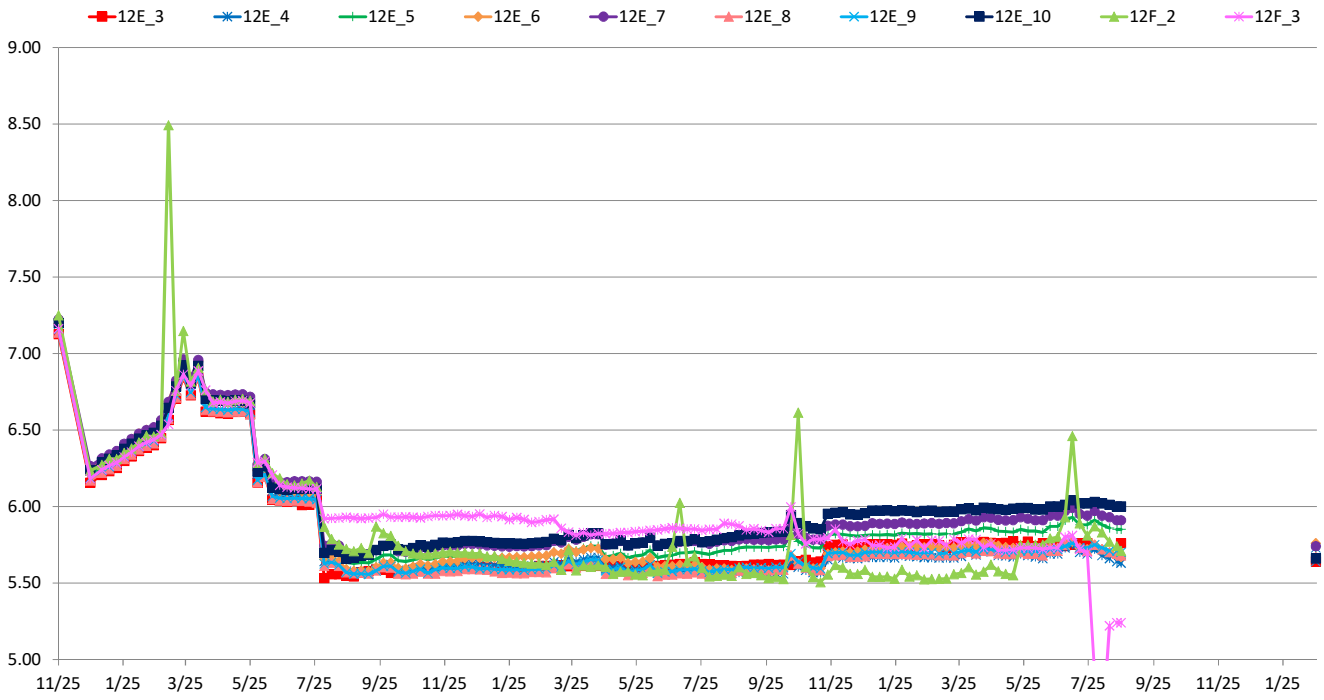
11丁目水位 (T.P+m)



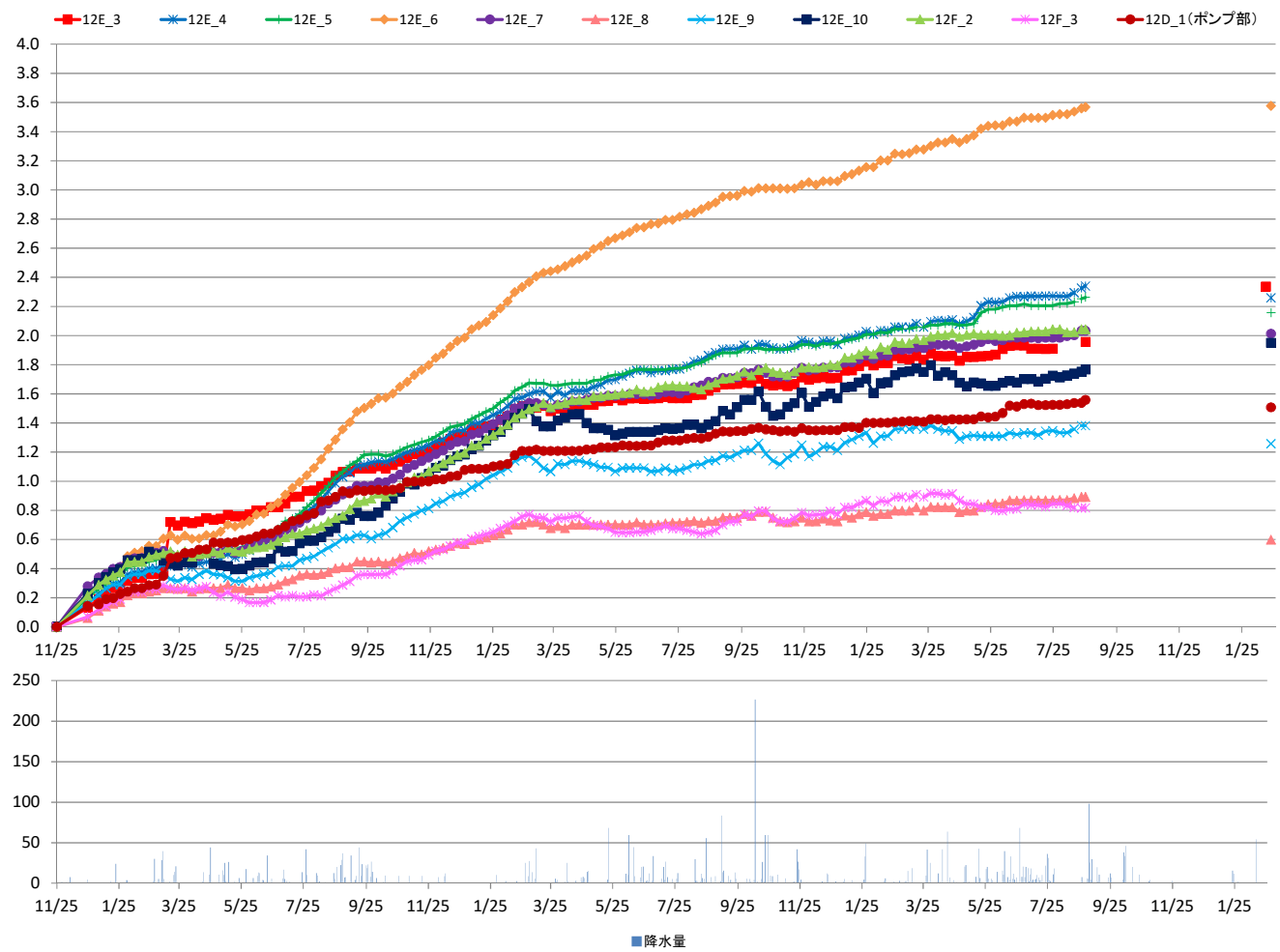
11丁目沈下 (G.L-cm)



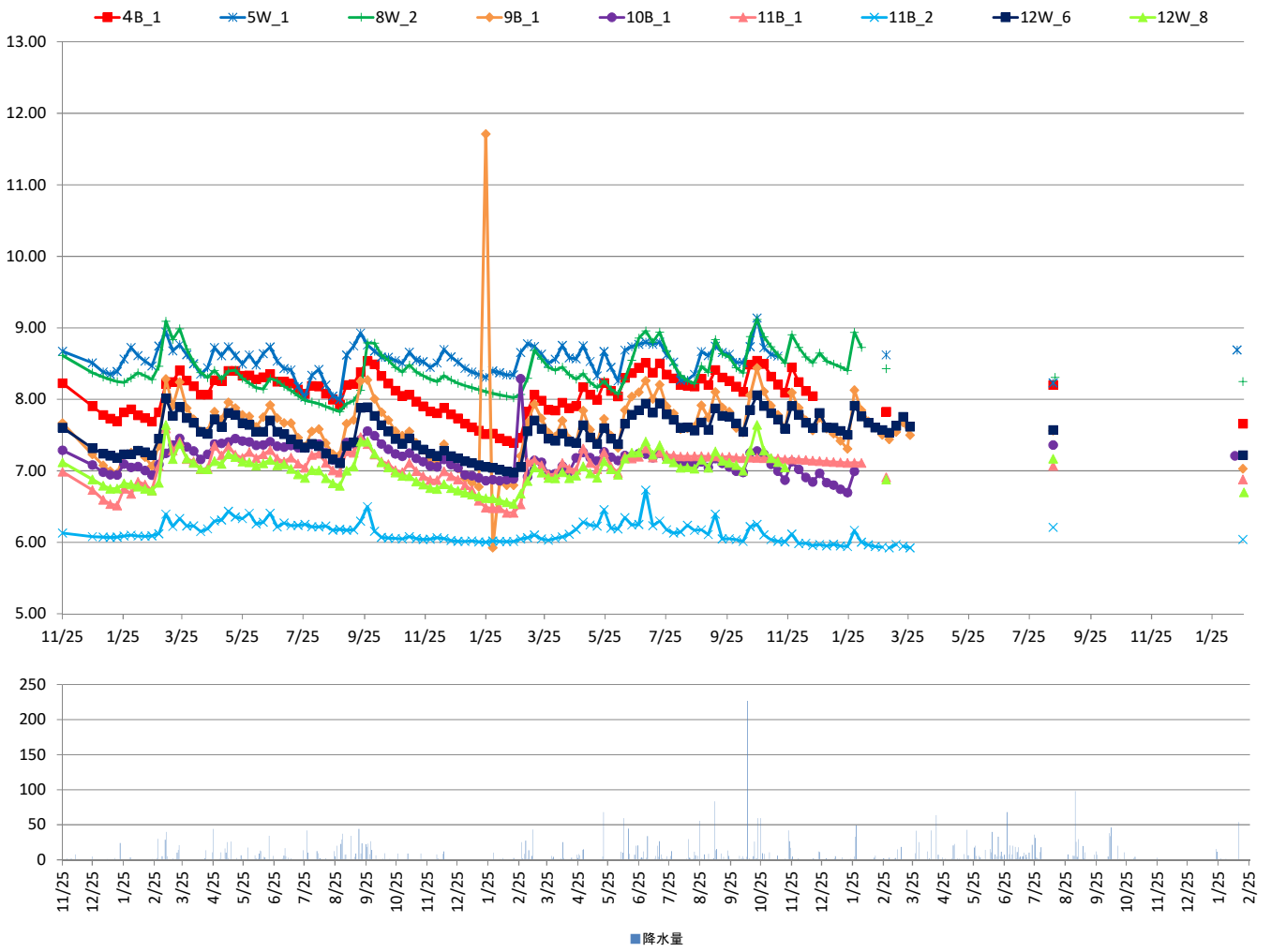
1 2丁目水位 (T,P+m)



1 2丁目目沈下 (G.L.-cm)



对策範囲外水位 (T,P+m)



[地下水位]		
事業区域名	4丁目(民地部)	
計測地点	4丁1	
計測地点地盤高 (T.P.m)	9.14	
計測日	地下水位 (T.P.m)	
	地下水位 (Glm)	
2017/11/25 12:00	8.40	-0.736
2017/12/25 12:00	7.91	-1.231
2018/1/9 12:00	7.78	-1.363
2018/1/12 12:00	7.75	-1.391
2018/1/19 12:00	7.76	-1.376
2018/1/26 12:00	8.34	-0.797
2018/2/2 12:00	8.45	-0.687
2018/2/9 12:00	8.34	-0.803
2018/2/16 12:00	8.34	-0.801
2018/2/23 12:00	7.81	-1.329
2018/3/2 12:00	8.42	-0.723
2018/3/9 12:00	8.65	-0.495
2018/3/16 12:00	8.50	-0.642
2018/3/23 12:00	8.58	-0.562
2018/3/30 12:00	8.48	-0.657
2018/4/6 12:00	8.42	-0.716
2018/4/13 12:00	8.40	-0.737
2018/4/20 12:00	8.42	-0.723
2018/4/27 12:00	8.47	-0.671
2018/5/4 12:00	8.47	-0.673
2018/5/11 12:00	8.51	-0.624
2018/5/18 12:00	8.51	-0.627
2018/5/25 12:00	8.49	-0.647
2018/6/1 12:00	8.49	-0.654
2018/6/8 12:00	8.45	-0.688
2018/6/15 12:00	8.45	-0.688
2018/6/22 12:00	8.45	-0.691
2018/6/29 12:00	8.40	-0.744
2018/7/6 12:00	8.53	-0.605
2018/7/13 12:00	8.39	-0.752
2018/7/20 12:00	8.03	-1.105
2018/7/27 12:00	7.97	-1.174
2018/8/3 12:00	8.05	-1.088
2018/8/10 12:00	8.37	-0.773
2018/8/17 12:00	7.87	-1.274
2018/8/24 12:00	7.83	-1.307
2018/8/31 12:00	7.80	-1.336
2018/9/7 12:00	8.38	-0.756
2018/9/14 12:00	8.42	-0.721
2018/9/21 12:00	8.60	-0.543
2018/9/28 12:00	8.55	-0.591
2018/10/5 12:00	8.47	-0.669
2018/10/12 12:00	8.42	-0.724
2018/10/19 12:00	8.38	-0.761
2018/10/26 12:00	8.37	-0.769
2018/11/2 12:00	7.80	-1.338
2018/11/9 12:00	8.37	-0.766
2018/11/16 12:00	7.88	-1.264
2018/11/23 12:00	7.83	-1.313
2018/11/30 12:00	7.77	-1.368
2018/12/7 12:00	7.80	-1.339
2018/12/14 12:00	8.40	-0.741
2018/12/21 12:00	7.87	-1.469
2018/12/28 12:00	7.72	-1.424
2019/1/4 12:00	7.63	-1.515
2019/1/11 12:00	7.66	-1.485
2019/1/18 12:00	7.64	-1.496
2019/1/25 12:00	7.61	-1.532
2019/2/1 12:00	8.45	-0.693
2019/2/8 12:00	7.62	-1.522
2019/2/15 12:00	7.58	-1.556
2019/2/22 12:00	8.40	-0.738
2019/3/1 12:00	8.55	-0.595
2019/3/8 12:00	8.52	-0.619
2019/3/15 12:00	8.47	-0.671
2019/3/22 12:00	8.42	-0.719
2019/3/29 12:00	7.77	-1.366
2019/4/5 12:00	8.43	-0.708
2019/4/12 12:00	8.53	-0.608
2019/4/19 12:00	7.83	-1.312
2019/4/26 12:00	8.49	-0.654
2019/5/3 12:00	8.54	-0.598
2019/5/10 12:00	8.00	-1.143
2019/5/17 12:00	7.78	-1.357
2019/5/24 12:00	8.49	-0.652
2019/5/31 12:00	7.89	-1.146
2019/6/7 12:00	7.86	-1.280
2019/6/14 12:00	8.47	-0.666
2019/6/21 12:00	8.53	-0.613
2019/6/28 12:00	8.56	-0.581
2019/7/5 12:00	8.65	-0.489
2019/7/12 12:00	8.50	-0.643
2019/7/19 12:00	8.61	-0.533
2019/7/26 12:00	8.46	-0.678
2019/8/2 12:00	8.44	-0.699
2019/8/9 12:00	8.00	-1.138
2019/8/16 12:00	8.43	-0.712
2019/8/23 12:00	8.28	-0.817
2019/8/30 12:00	8.45	-0.691
2019/9/6 12:00	8.26	-0.878
2019/9/13 12:00	8.52	-0.618
2019/9/20 12:00	8.47	-0.673
2019/9/27 12:00	8.44	-0.698
2019/10/4 12:00	8.02	-1.122
2019/10/11 12:00	7.97	-1.171
2019/10/18 12:00	8.39	-0.550
2019/10/25 12:00	8.78	-0.361
2019/11/1 12:00	8.60	-0.544
2019/11/8 12:00	8.48	-0.654
2019/11/15 12:00	8.44	-0.695
2019/11/22 12:00	7.91	-1.227
2019/11/29 12:00	8.53	-0.614
2019/12/6 12:00	8.44	-0.701
2019/12/13 12:00	7.96	-1.179
2019/12/20 12:00	7.94	-1.200
2019/12/27 12:00	8.03	-1.106
2020/1/3 12:00	7.88	-1.259
2020/1/10 12:00	7.86	-1.281
2020/1/17 12:00	-	-
2020/1/24 12:00	-	-
2020/1/31 12:00	-	-
2020/2/7 12:00	-	-
2020/2/14 12:00	-	-
2020/2/21 12:00	-	-
2020/2/28 12:00	-	-
2020/3/6 12:00	-	-
2020/3/13 12:00	-	-
2020/3/20 12:00	-	-
2020/3/27 12:00	-	-
2020/4/3 12:00	-	-
2020/4/10 12:00	-	-
2020/4/17 12:00	-	-
2020/4/24 12:00	-	-
2020/5/1 12:00	-	-
2020/5/8 12:00	-	-
2020/5/15 12:00	-	-
2020/5/22 12:00	-	-
2020/5/29 12:00	-	-
2020/6/5 12:00	-	-
2020/6/12 12:00	-	-
2020/6/19 12:00	-	-
2020/6/26 12:00	-	-
2020/7/3 12:00	-	-
2020/7/10 12:00	-	-
2020/7/17 12:00	-	-
2020/7/24 12:00	-	-
2020/7/31 12:00	-	-
2020/8/7 12:00	-	-
2020/8/14 12:00	-	-
2020/8/18	7.94	-1.200
2020/8/20	-	-
2020/8/21 12:00	-	-
2020/8/25 12:00	-	-
2021/2/17	-	-
2021/2/18	-	-
2021/2/19	-	-
2021/2/22	-	-
2021/2/25	7.49	-1.650
2021/2/26	-	-
1段階目水位	7.84	-1.30
2018/7/24まで	-	-
2段階目水位	7.75	-1.39
2018/8/24まで	-	-
最終水位	7.66	-1.48
2018/8/24まで	-	-

[地下水位]		4丁目(道路部)									
事業区域名	計測地点地番(高 T.P.m)	4E1		4E2		4E3		4E4		4E5	
計測日	地下水位 (T.P.m)	地下水位 (g.l.m)	地下水位 (T.P.m)	地下水位 (g.l.m)	地下水位 (T.P.m)	地下水位 (g.l.m)	地下水位 (T.P.m)	地下水位 (g.l.m)	地下水位 (T.P.m)	地下水位 (g.l.m)	
2017/11/25 12:00	7.92	-1.257	7.98	-1.316	7.98	-1.104	7.28	-1.571	8.00	-1.232	
2017/12/25 12:00	7.58	-1.604	7.64	-1.660	7.63	-1.455	6.94	-1.909	7.65	-1.582	
2018/1/9 12:00	7.62	-1.583	7.71	-1.591	7.69	-1.366	7.01	-1.328	7.72	-1.155	
2018/1/12 12:00	7.71	-1.511	7.73	-1.571	7.71	-1.366	7.03	-1.816	7.74	-1.493	
2018/1/19 12:00	7.71	-1.474	7.77	-1.532	7.78	-1.329	7.07	-1.779	7.77	-1.457	
2018/1/26 12:00	7.79	-1.388	7.85	-1.449	7.83	-1.241	7.15	-1.695	7.86	-1.371	
2018/2/2 12:00	7.82	-1.384	7.88	-1.424	7.89	-1.271	7.19	-1.670	7.89	-1.346	
2018/2/9 12:00	7.82	-1.360	7.88	-1.421	7.86	-1.220	7.18	-1.667	7.88	-1.346	
2018/2/16 12:00	7.82	-1.356	7.88	-1.417	7.86	-1.215	7.19	-1.664	7.89	-1.341	
2018/2/23 12:00	7.81	-1.367	7.87	-1.428	7.85	-1.224	7.19	-1.674	7.89	-1.350	
2018/3/2 12:00	7.88	-1.301	7.94	-1.359	7.92	-1.158	7.24	-1.600	7.95	-1.283	
2018/3/9 12:00	8.11	-1.070	8.17	-1.125	8.15	-0.928	7.47	-1.378	8.18	-1.049	
2018/4/20 12:00	7.98	-1.199	8.04	-1.258	8.03	-1.050	7.36	-1.489	8.06	-1.189	
2018/4/27 12:00	8.08	-1.099	8.14	-1.158	8.13	-0.949	7.46	-1.367	8.16	-1.066	
2018/5/4 12:00	8.06	-1.118	8.12	-1.179	8.11	-0.969	7.44	-1.406	8.14	-1.067	
2018/5/11 12:00	8.16	-1.022	8.21	-1.085	8.21	-0.870	7.54	-1.305	8.24	-0.987	
2018/5/18 12:00	8.19	-1.021	8.21	-1.085	8.21	-0.875	7.54	-1.306	8.24	-0.989	
2018/5/25 12:00	8.09	-1.067	8.15	-1.152	8.14	-0.941	7.46	-1.372	8.18	-1.055	
2018/6/1 12:00	7.96	-1.223	8.01	-1.290	8.00	-1.077	7.39	-1.504	8.04	-1.186	
2018/6/8 12:00	7.88	-1.295	7.93	-1.366	7.93	-1.154	7.27	-1.576	7.97	-1.259	
2018/6/15 12:00	7.94	-1.291	7.99	-1.361	7.93	-1.154	7.27	-1.576	7.97	-1.259	
2018/6/22 12:00	7.60	-1.581	7.65	-1.654	7.64	-1.440	6.98	-1.868	7.69	-1.544	
2018/6/29 12:00	7.59	-1.588	7.64	-1.657	7.62	-1.463	6.96	-1.887	7.67	-1.562	
2018/7/6 12:00	7.60	-1.583	7.64	-1.656	7.63	-1.455	6.97	-1.880	7.67	-1.561	
2018/7/13 12:00	7.60	-1.580	7.64	-1.657	7.63	-1.451	6.98	-1.889	7.69	-1.540	
2018/7/20 12:00	7.59	-1.586	7.63	-1.665	7.62	-1.460	6.97	-1.877	7.69	-1.542	
2018/7/27 12:00	7.59	-1.587	7.63	-1.667	7.62	-1.458	6.97	-1.877	7.69	-1.541	
2018/8/3 12:00	6.82	-2.362	6.87	-2.426	6.78	-2.321	6.10	-2.745	6.83	-2.403	
2018/8/10 12:00	6.82	-2.362	6.88	-2.423	6.75	-2.335	6.09	-2.764	6.82	-2.410	
2018/8/17 12:00	6.83	-2.346	6.89	-2.407	6.75	-2.328	6.09	-2.763	6.82	-2.407	
2018/8/24 12:00	6.83	-2.346	6.88	-2.419	6.75	-2.328	6.09	-2.760	6.83	-2.401	
2018/8/31 12:00	6.83	-2.359	6.81	-2.434	6.78	-2.326	6.10	-2.753	6.84	-2.394	
2018/9/7 12:00	6.80	-2.378	6.87	-2.426	6.76	-2.320	6.10	-2.754	6.84	-2.393	
2018/9/14 12:00	6.79	-2.385	6.87	-2.428	6.76	-2.315	6.10	-2.754	6.82	-2.406	
2018/9/21 12:00	6.81	-2.371	6.88	-2.411	6.79	-2.294	6.11	-2.737	6.85	-2.385	
2018/9/28 12:00	6.83	-2.352	6.89	-2.410	6.79	-2.294	6.11	-2.736	6.85	-2.385	
2018/10/5 12:00	6.82	-2.359	6.88	-2.417	6.79	-2.291	6.12	-2.734	6.85	-2.380	
2018/10/12 12:00	6.81	-2.375	6.87	-2.431	6.78	-2.287	6.11	-2.740	6.84	-2.382	
2018/10/19 12:00	6.80	-2.383	6.87	-2.433	6.78	-2.286	6.11	-2.739	6.83	-2.388	
2018/10/26 12:00	6.80	-2.382	6.87	-2.431	6.78	-2.288	6.12	-2.732	6.86	-2.368	
2018/11/2 12:00	6.80	-2.381	6.87	-2.427	6.78	-2.305	6.11	-2.737	6.85	-2.376	
2018/11/9 12:00	6.81	-2.381	6.88	-2.427	6.78	-2.287	6.11	-2.737	6.87	-2.361	
2018/11/16 12:00	6.80	-2.380	6.88	-2.422	6.79	-2.288	6.13	-2.722	6.86	-2.374	
2018/11/23 12:00	6.80	-2.382	6.88	-2.419	6.78	-2.303	6.12	-2.733	6.86	-2.371	
2018/11/30 12:00	6.80	-2.383	6.88	-2.416	6.78	-2.285	6.13	-2.724	6.87	-2.362	
2018/12/7 12:00	6.81	-2.410	6.84	-2.413	6.80	-2.292	6.12	-2.722	6.87	-2.361	
2018/12/14 12:00	6.81	-2.374	6.90	-2.400	6.80	-2.279	6.14	-2.707	6.88	-2.346	
2018/12/21 12:00	6.79	-2.390	6.90	-2.396	6.80	-2.278	6.15	-2.703	6.89	-2.343	
2019/1/28 12:00	6.80	-2.385	6.91	-2.386	6.79	-2.286	6.14	-2.711	6.89	-2.352	
2019/1/14 12:00	6.82	-2.359	6.91	-2.387	6.80	-2.284	6.14	-2.707	6.88	-2.349	
2019/1/11 12:00	6.83	-2.346	6.92	-2.382	6.80	-2.280	6.15	-2.701	6.89	-2.343	
2019/1/18 12:00	6.84	-2.337	6.92	-2.380	6.79	-2.287	6.14	-2.708	6.88	-2.353	
2019/1/25 12:00	6.84	-2.340	6.92	-2.378	6.79	-2.283	6.14	-2.712	6.89	-2.358	
2019/2/1 12:00	6.85	-2.331	6.93	-2.374	6.80	-2.278	6.16	-2.695	6.89	-2.338	
2019/2/8 12:00	6.84	-2.338	6.92	-2.378	6.81	-2.275	6.16	-2.693	6.89	-2.337	
2019/2/15 12:00	6.81	-2.400	6.92	-2.376	6.80	-2.284	6.15	-2.700	6.89	-2.343	
2019/2/22 12:00	6.83	-2.346	6.92	-2.384	6.81	-2.274	6.16	-2.690	6.90	-2.334	
2019/3/1 12:00	6.84	-2.337	6.92	-2.381	6.79	-2.290	6.14	-2.709	6.88	-2.351	
2019/3/8 12:00	6.84	-2.336	6.92	-2.378	6.79	-2.292	6.15	-2.196	6.88	-2.349	
2019/3/15 12:00	6.83	-2.358	6.91	-2.368	6.79	-2.285	6.16	-2.698	6.89	-2.346	
2019/3/22 12:00	6.82	-2.364	6.91	-2.392	6.79	-2.286	6.16	-2.188	6.88	-2.350	
2019/3/29 12:00	6.81	-2.367	6.91	-2.395	6.79	-2.288	6.16	-2.197	6.89	-2.338	
2019/4/5 12:00	6.81	-2.368	6.90	-2.397	6.80	-2.285	6.16	-2.191	6.90	-2.330	
2019/4/12 12:00	6.80	-2.366	6.90	-2.397	6.80	-2.284	6.16	-2.184	6.90	-2.347	
2019/4/19 12:00	6.81	-2.371	6.90	-2.402	6.79	-2.293	6.16	-2.201	6.90	-2.335	
2019/4/26 12:00	6.81	-2.365	6.90	-2.402	6.79	-2.294	6.14	-2.208	6.89	-2.337	
2019/5/3 12:00	6.81	-2.365	6.89	-2.405	6.79	-2.304	6.14	-2.213	6.89	-2.339	
2019/5/10 12:00	6.81	-2.373	6.89	-2.409	6.78	-2.299	6.14	-2.209	6.90	-2.330	
2019/5/17 12:00	6.80	-2.376	6.88	-2.418	6.77	-2.309	6.13	-2.217	6.89	-2.337	
2019/5/24 12:00	6.81	-2.374	6.88	-2.418	6.77	-2.313	6.13	-2.219	6.90	-2.335	
2019/5/31 12:00	6.80	-2.378	6.87	-2.428	6.78	-2.317	6.13	-2.231	6.89	-2.339	
2019/6/7 12:00	6.89	-2.488	6.87	-2.431	6.77	-2.312	6.12	-2.231	6.90	-2.335	
2019/6/14 12:00	6.80	-2.377	6.87	-2.425	6.75	-2.326	6.11	-2.241	6.88	-2.352	
2019/6/21 12:00	6.81	-2.372	6.87	-2.426	6.75	-2.320	6.11	-2.242	6.88	-2.352	
2019/6/28 12:00	6.81	-2.366	6.88	-2.423	6.76	-2.319	6.10	-2.249	6.90	-2.332	
2019/7/5 12:00	6.83	-2.355	6.88	-2.420	6.77	-2.312	6.11	-2.242	6.90	-2.333	
2019/7/12 12:00	6.81	-2.368	6.87	-2.429	6.77	-2.313	6.10	-2.252	6.88	-2.338	
2019/7/19 12:00	6.81	-2.353	6.87	-2.421	6.78	-2.315	6.11	-2.250	6.90	-2.333	
2019/7/26 12:00	6.81	-2.369	6.87	-2.435	6.74	-2.338	6.10	-2.266	6.88	-2.350	
2019/8/2 12:00	6.80	-2.379	6.86	-2.439	6.74	-2.340	6.10	-2.264	6.89	-2.338	
2019/8/9 12:00	6.79	-2.386	6.85	-2.447	6.73	-2.340	6.11	-2.279	6.90	-2.336	
2019/8/16 12:00	6.79	-2.390	6.85	-2.446	6.73	-2.352	6.10	-2.280	6.89	-2.339	
2019/8/23 12:00	6.79	-2.388	6.86	-2.443	6.73	-2.350	6.10	-2.289	6.90	-2.330	
2019/8/30 12:00	6.79	-2.385	6.86	-2.438	6.73	-2.350	6.10	-2.292	6.88	-2.340	
2019/9/6 12:00	6.81	-2.381	6.87	-2.435	6.72	-2.362	6.10	-2.286	6.89	-2.360	
2019/9/13 12:00	6.80	-2.376	6.85	-2.452	6.74	-2.337	6.10	-2.286	6.89	-2.340	
2019/9/20 12:00	6.80	-2.382	6.85	-2.455	6.75	-2.333	6.11	-2.281	6.88	-2.345	
2019/9/27 12:00	6.80	-2.383	6.85	-2.454	6.76	-2.324	6.11	-2.281	6.91	-2.319	
2019/10/4 12:00	6.80	-2.383	6.85	-2.454	6.76	-2.303	6.11	-2.279	6.90	-2.332	
2019/10/11 12:00	6.80	-2.381	6.85	-2.454	6.78	-2.296	6.11	-2.285	6.91	-2.319	
2019/10/18 12:00	6.83	-2.348	6.86	-2.440	6.79	-2.293	6.10	-2.286	6.91	-2.315	
2019/10/25 12:00	6.80	-2.379	6.86	-2.437	6.81	-2.238	6.14	-2.141	6.91	-2.362	
2019/11/1 12:00	6.83	-2.346	6.87	-2.431	6.80	-2.284	6.10	-2.251	6.92	-2.310	
2019/11/8 12:00	6.82	-2.362	6.87	-2.432	6.79	-2.286	6.10	-2.255	6.92	-2.311	
2019/11/15 12:00	6.81	-2.366	6.87	-2.432	6.78	-2.287	6.10	-2.260	6.91	-2.303	
2019/11/22 12:00	6.82	-2.381	6.87	-2.427	6.78	-2.300	6.10	-2.274	6.91	-2.319	
2019/11/29 12:00	6.84	-2.344	6.88	-2.419	6.78	-2.295	6.10	-2.270	6.92	-2.309	
2019/12/6 12:00	6.83	-2.353	6.87	-2.427	6.78	-2.297	6.10	-2.271	6.93	-2.302	
2019/12/13 12:00	6.81	-2.353	6.87	-2.426	6.78	-2.287	6.10	-2.273	6.91	-2.319	
2019/12/20 12:00	6.83	-2.355	6.87	-2.430	6.78	-2.299	6.11	-2.275	6.91	-2.325	
2019/12/27 12:00	-	-	6.87	-2.426	6.78	-2.305	6.10				

[決下層]	
事業区域名	4丁目
計測地点名	4F
計測日	決下層 (cm)
2017/1/25 12:00	0.0
2017/1/25 12:00	0.2
2018/1/5 12:00	0.2
2018/1/12 12:00	0.3
2018/1/19 12:00	0.3
2018/1/26 12:00	0.3
2018/2/2 12:00	0.3
2018/2/9 12:00	0.3
2018/2/16 12:00	0.3
2018/2/23 12:00	0.3
2018/3/2 12:00	0.3
2018/3/9 12:00	0.3
2018/3/16 12:00	0.3
2018/3/23 12:00	0.2
2018/3/30 12:00	0.2
2018/4/6 12:00	0.2
2018/4/13 12:00	0.2
2018/4/20 12:00	0.3
2018/4/27 12:00	0.3
2018/5/4 12:00	0.2
2018/5/11 12:00	0.2
2018/5/18 12:00	0.2
2018/5/25 12:00	0.3
2018/6/1 12:00	0.2
2018/6/8 12:00	0.2
2018/6/15 12:00	0.3
2018/6/22 12:00	0.3
2018/6/29 12:00	0.3
2018/7/6 12:00	0.3
2018/7/13 12:00	0.3
2018/7/20 12:00	0.4
2018/7/27 12:00	0.4
2018/8/3 12:00	0.4
2018/8/10 12:00	0.4
2018/8/17 12:00	0.5
2018/8/24 12:00	0.5
2018/8/31 12:00	0.5
2018/9/7 12:00	0.5
2018/9/14 12:00	0.5
2018/9/21 12:00	0.5
2018/9/28 12:00	0.5
2018/10/5 12:00	0.5
2018/10/12 12:00	0.5
2018/10/19 12:00	0.5
2018/10/26 12:00	0.5
2018/11/2 12:00	0.6
2018/11/9 12:00	0.6
2018/11/16 12:00	0.6
2018/11/23 12:00	0.6
2018/11/30 12:00	0.7
2018/12/7 12:00	0.7
2018/12/14 12:00	0.7
2018/12/21 12:00	0.7
2018/12/28 12:00	0.7
2019/1/4 12:00	0.8
2019/1/11 12:00	0.8
2019/1/18 12:00	0.8
2019/1/25 12:00	0.8
2019/2/1 12:00	0.8
2019/2/8 12:00	0.9
2019/2/15 12:00	0.9
2019/2/22 12:00	0.9
2019/3/1 12:00	0.9
2019/3/8 12:00	0.9
2019/3/15 12:00	0.9
2019/3/22 12:00	0.9
2019/3/29 12:00	0.9
2019/4/5 12:00	0.9
2019/4/12 12:00	0.9
2019/4/19 12:00	0.9
2019/4/26 12:00	0.9
2019/5/3 12:00	0.9
2019/5/10 12:00	0.9
2019/5/17 12:00	0.9
2019/5/24 12:00	0.8
2019/5/31 12:00	0.9
2019/6/7 12:00	0.9
2019/6/14 12:00	0.9
2019/6/21 12:00	0.8
2019/6/28 12:00	0.8
2019/7/5 12:00	0.8
2019/7/12 12:00	0.8
2019/7/19 12:00	0.8
2019/7/26 12:00	0.8
2019/8/2 12:00	0.8
2019/8/9 12:00	0.8
2019/8/16 12:00	0.8
2019/8/23 12:00	0.9
2019/8/30 12:00	0.9
2019/9/6 12:00	0.9
2019/9/13 12:00	0.9
2019/9/20 12:00	0.9
2019/9/27 12:00	0.9
2019/10/4 12:00	0.9
2019/10/11 12:00	0.9
2019/10/18 12:00	0.9
2019/10/25 12:00	0.8
2019/11/1 12:00	0.8
2019/11/8 12:00	0.8
2019/11/15 12:00	0.8
2019/11/22 12:00	0.9
2019/11/29 12:00	0.9
2019/12/6 12:00	0.9
2019/12/13 12:00	0.9
2019/12/20 12:00	0.9
2019/12/27 12:00	0.9
2020/1/3 12:00	0.9
2020/1/10 12:00	1.0
2020/1/17 12:00	-
2020/1/24 12:00	-
2020/1/31 12:00	-
2020/2/7 12:00	-
2020/2/14 12:00	-
2020/2/21 12:00	-
2020/2/28 12:00	-
2020/3/6 12:00	-
2020/3/13 12:00	-
2020/3/20 12:00	-
2020/3/27 12:00	-
2020/4/3 12:00	-
2020/4/10 12:00	-
2020/4/17 12:00	-
2020/4/24 12:00	-
2020/5/1 12:00	-
2020/5/8 12:00	-
2020/5/15 12:00	-
2020/5/22 12:00	-
2020/5/29 12:00	-
2020/6/5 12:00	-
2020/6/12 12:00	-
2020/6/19 12:00	-
2020/6/26 12:00	-
2020/7/3 12:00	-
2020/7/10 12:00	-
2020/7/17 12:00	-
2020/7/24 12:00	-
2020/7/31 12:00	-
2020/8/7 12:00	-
2020/8/14 12:00	-
2020/8/18	-
2020/8/20	-
2020/8/21 12:00	-
2020/8/23 12:00	-
2021/2/11	-
2021/2/18	-
2021/2/19	-
2021/2/22	1.0
2021/2/25	-
2021/2/26	-

[地下水] 事業区域名 計測地点名	4丁目(道路部)					4D1(ポンプ部) 計測地点名
	4E1	4E2	4E3	4E4	4E5	
	沈下量 (cm)	沈下量 (cm)	沈下量 (cm)	沈下量 (cm)	沈下量 (cm)	
計測日						
2017/11/25 12:00	0.0	0.0	0.0	0.0	0.0	0.0
2017/12/25 12:00	0.1	0.2	0.2	0.1	0.2	0.1
2018/1/5 12:00	0.2	0.3	0.2	0.2	0.2	0.2
2018/1/12 12:00	0.2	0.3	0.3	0.2	0.2	0.2
2018/1/19 12:00	0.3	0.3	0.3	0.2	0.3	0.3
2018/1/26 12:00	0.3	0.3	0.3	0.2	0.3	0.2
2018/2/2 12:00	0.3	0.4	0.3	0.3	0.3	0.2
2018/2/9 12:00	0.3	0.4	0.3	0.3	0.3	0.2
2018/2/16 12:00	0.3	0.4	0.3	0.3	0.3	0.2
2018/2/23 12:00	0.3	0.4	0.3	0.3	0.3	0.3
2018/3/2 12:00	0.3	0.4	0.3	0.3	0.3	0.2
2018/3/9 12:00	0.3	0.4	0.3	0.3	0.3	0.3
2018/3/16 12:00	0.2	0.4	0.3	0.2	0.2	0.2
2018/3/23 12:00	0.2	0.4	0.2	0.2	0.2	0.1
2018/3/30 12:00	0.2	0.4	0.2	0.2	0.2	0.2
2018/4/6 12:00	0.2	0.4	0.2	0.2	0.2	0.1
2018/4/13 12:00	0.2	0.4	0.2	0.2	0.2	0.2
2018/4/20 12:00	0.3	0.5	0.3	0.2	0.2	0.2
2018/4/27 12:00	0.3	0.5	0.2	0.2	0.2	0.2
2018/5/4 12:00	0.3	0.5	0.2	0.2	0.2	0.2
2018/5/11 12:00	0.3	0.5	0.2	0.2	0.2	0.2
2018/5/18 12:00	0.2	0.5	0.2	0.2	0.2	0.1
2018/5/25 12:00	0.3	0.5	0.2	0.2	0.2	0.1
2018/6/1 12:00	0.3	0.6	0.2	0.2	0.2	0.2
2018/6/8 12:00	0.3	0.6	0.2	0.2	0.2	0.2
2018/6/15 12:00	0.3	0.7	0.3	0.2	0.2	0.3
2018/6/22 12:00	0.3	0.7	0.3	0.2	0.2	0.2
2018/6/29 12:00	0.3	0.8	0.3	0.3	0.3	0.2
2018/7/6 12:00	0.4	0.8	0.3	0.3	0.3	0.3
2018/7/13 12:00	0.4	0.9	0.3	0.3	0.3	0.3
2018/7/20 12:00	0.5	0.9	0.4	0.3	0.3	0.3
2018/7/27 12:00	0.5	0.9	0.4	0.4	0.3	0.3
2018/8/3 12:00	0.5	1.0	0.5	0.4	0.4	0.4
2018/8/10 12:00	0.5	1.0	0.5	0.4	0.4	0.4
2018/8/17 12:00	0.6	1.0	0.5	0.4	0.5	0.4
2018/8/24 12:00	0.6	1.1	0.6	0.5	0.5	0.4
2018/8/31 12:00	0.6	1.1	0.6	0.5	0.5	0.5
2018/9/7 12:00	0.6	1.1	0.6	0.5	0.5	0.5
2018/9/14 12:00	0.6	1.1	0.6	0.5	0.5	0.5
2018/9/21 12:00	0.5	1.1	0.6	0.5	0.5	0.5
2018/9/28 12:00	0.5	1.1	0.6	0.4	0.5	0.4
2018/10/5 12:00	0.5	1.1	0.6	0.4	0.5	0.5
2018/10/12 12:00	0.5	1.1	0.6	0.4	0.5	0.4
2018/10/19 12:00	0.5	1.1	0.6	0.4	0.5	0.4
2018/10/26 12:00	0.5	1.1	0.6	0.5	0.5	0.5
2018/11/2 12:00	0.5	1.2	0.6	0.5	0.5	0.5
2018/11/9 12:00	0.6	1.2	0.7	0.5	0.5	0.5
2018/11/16 12:00	0.6	1.2	0.7	0.5	0.5	0.5
2018/11/23 12:00	0.6	1.2	0.7	0.5	0.6	0.5
2018/11/30 12:00	0.6	1.2	0.7	0.5	0.6	0.6
2018/12/7 12:00	0.6	1.2	0.7	0.6	0.6	0.5
2018/12/14 12:00	0.7	1.3	0.7	0.6	0.6	0.6
2018/12/21 12:00	0.7	1.3	0.8	0.6	0.6	0.6
2018/12/28 12:00	0.7	1.3	0.8	0.6	0.6	0.6
2019/1/4 12:00	0.7	1.3	0.8	0.6	0.7	0.6
2019/1/11 12:00	0.7	1.3	0.8	0.6	0.7	0.6
2019/1/18 12:00	0.7	1.3	0.8	0.7	0.7	0.7
2019/1/25 12:00	0.8	1.3	0.8	0.7	0.7	0.7
2019/2/1 12:00	0.8	1.4	0.9	0.7	0.8	0.7
2019/2/8 12:00	0.8	1.4	0.9	0.7	0.8	0.7
2019/2/15 12:00	0.9	1.4	1.0	0.8	0.8	0.7
2019/2/22 12:00	0.9	1.4	1.0	0.8	0.8	0.7
2019/3/1 12:00	0.9	1.4	1.0	0.8	0.8	0.7
2019/3/8 12:00	0.8	1.4	1.0	0.8	0.8	0.7
2019/3/15 12:00	0.8	1.4	0.9	0.7	0.7	0.7
2019/3/22 12:00	0.7	1.4	0.9	0.7	0.7	0.6
2019/3/29 12:00	0.8	1.4	0.9	0.7	0.7	0.7
2019/4/5 12:00	0.8	1.4	0.9	0.7	0.7	0.7
2019/4/12 12:00	0.8	1.4	0.9	0.7	0.7	0.7
2019/4/19 12:00	0.8	1.4	0.9	0.7	0.8	0.7
2019/4/26 12:00	0.8	1.4	0.9	0.7	0.8	0.7
2019/5/3 12:00	0.8	1.4	0.9	0.7	0.7	0.7
2019/5/10 12:00	0.8	1.4	0.9	0.7	0.7	0.7
2019/5/17 12:00	0.8	1.4	0.9	0.7	0.8	0.7
2019/5/24 12:00	0.8	1.4	0.9	0.7	0.7	0.7
2019/5/31 12:00	0.8	1.4	0.9	0.7	0.7	0.7
2019/6/7 12:00	0.9	1.5	0.9	0.7	0.7	0.7
2019/6/14 12:00	0.8	1.5	0.9	0.7	0.7	0.7
2019/6/21 12:00	0.8	1.5	0.8	0.7	0.7	0.7
2019/6/28 12:00	0.8	1.5	0.8	0.6	0.7	0.6
2019/7/5 12:00	0.8	1.5	0.8	0.6	0.7	0.6
2019/7/12 12:00	0.8	1.5	0.8	0.7	0.7	0.7
2019/7/19 12:00	0.8	1.5	0.8	0.6	0.7	0.6
2019/7/26 12:00	0.8	1.5	0.8	0.7	0.7	0.7
2019/8/2 12:00	0.8	1.6	0.9	0.7	0.7	0.7
2019/8/9 12:00	0.8	1.6	0.9	0.7	0.7	0.7
2019/8/16 12:00	0.9	1.6	0.9	0.7	0.7	0.7
2019/8/23 12:00	0.9	1.6	0.9	0.7	0.8	0.7
2019/8/30 12:00	0.9	1.7	0.9	0.7	0.8	0.7
2019/9/6 12:00	0.9	1.7	0.9	0.8	0.8	0.7
2019/9/13 12:00	0.8	1.7	0.9	0.7	0.7	0.7
2019/9/20 12:00	0.8	1.7	0.9	0.7	0.8	0.7
2019/9/27 12:00	0.9	1.7	1.0	0.8	0.8	0.8
2019/10/4 12:00	0.9	1.7	0.9	0.7	0.8	0.7
2019/10/11 12:00	0.9	1.8	1.0	0.8	0.8	0.8
2019/10/18 12:00	0.8	1.8	0.9	0.7	0.8	0.7
2019/10/25 12:00	0.8	1.8	0.9	0.7	0.7	0.7
2019/11/1 12:00	0.7	1.8	0.8	0.6	0.7	0.7
2019/11/8 12:00	0.8	1.9	0.9	0.7	0.7	0.7
2019/11/15 12:00	0.8	1.9	0.9	0.7	0.7	0.7
2019/11/22 12:00	0.8	1.9	0.9	0.7	0.8	0.8
2019/11/29 12:00	0.8	2.0	0.9	0.7	0.7	0.7
2019/12/6 12:00	0.8	2.0	0.9	0.7	0.7	0.7
2019/12/13 12:00	0.8	2.0	0.9	0.7	0.7	0.7
2019/12/20 12:00	0.8	2.0	0.9	0.7	0.8	0.7
2019/12/27 12:00	--	2.0	0.9	0.7	--	0.7
2020/1/3 12:00	--	2.0	1.0	0.7	--	0.8
2020/1/10 12:00	--	2.1	1.0	0.7	--	0.8
2020/1/17 12:00	--	2.1	1.0	0.8	--	0.8
2020/1/24 12:00	--	2.1	1.0	0.8	--	0.8
2020/1/31 12:00	--	2.1	1.0	0.7	--	0.8
2020/2/7 12:00	--	2.1	1.0	0.8	--	0.8
2020/2/14 12:00	--	2.2	1.0	0.8	--	0.8
2020/2/21 12:00	--	2.2	1.0	0.8	--	0.8
2020/2/28 12:00	--	2.2	1.0	0.8	--	0.8
2020/3/6 12:00	--	2.2	1.0	0.8	--	0.8
2020/3/13 12:00	--	2.2	1.1	0.8	--	0.8
2020/3/20 12:00	--	2.3	1.0	0.8	--	0.8
2020/3/27 12:00	--	2.3	1.1	0.8	--	0.8
2020/4/3 12:00	--	2.3	--	--	--	--
2020/4/10 12:00	--	2.3	--	--	--	--
2020/4/17 12:00	--	2.3	--	--	--	--
2020/4/24 12:00	--	2.4	--	--	--	--
2020/5/1 12:00	--	2.4	--	--	--	--
2020/5/8 12:00	--	2.4	--	--	--	--
2020/5/15 12:00	--	2.5	--	--	--	--
2020/5/22 12:00	--	2.5	--	--	--	--
2020/5/29 12:00	--	2.5	--	--	--	--
2020/6/5 12:00	--	2.5	--	--	--	--
2020/6/12 12:00	--	2.5	--	--	--	--
2020/6/19 12:00	--	2.5	--	--	--	--
2020/6/26 12:00	--	2.5	--	--	--	--
2020/7/3 12:00	--	2.5	--	--	--	--
2020/7/10 12:00	--	2.5	--	--	--	--
2020/7/17 12:00	--	2.5	--	--	--	--
2020/7/24 12:00	--	2.5	--	--	--	--
2020/7/31 12:00	--	2.5	--	--	--	--
2020/8/7 12:00	--	2.5	--	--	--	--
2020/8/14 12:00	--	2.5	--	--	--	--
2020/8/18	--	--	--	1.0	--	--
2020/8/20	1.0	--	1.4	--	0.4	0.4
2020/8/21 12:00	--	2.6	--	--	--	--
2020/8/23 12:00	--	2.6	--	--	--	--
2021/2/11	--	--	--	--	--	--
2021/2/18	--	--	--	1.4	--	--
2021/2/19	--	--	--	--	--	--
2021/2/22	0.9	2.2	1.3	--	0.4	0.8
2021/2/25	--	--	--	--	--	--
2021/2/26	--	--	--	--	--	--

[沈下量] 観測地点名	6丁目(道路部)				6D-1(水工部) 沈下量 (cm)
	観1	観2	観3	観4	
	沈下量 (cm)	沈下量 (cm)	沈下量 (cm)	沈下量 (cm)	
計測日					
2017/11/25 12:00	0.0	0.0	0.0	0.0	0.0
2017/12/25 12:00	0.1	0.1	0.1	0.1	0.1
2018/1/5 12:00	0.1	0.1	0.3	0.2	0.2
2018/1/12 12:00	0.1	0.1	0.3	0.3	0.2
2018/1/19 12:00	0.2	0.2	0.4	0.3	0.2
2018/1/26 12:00	0.2	0.2	0.4	0.3	0.2
2018/2/2 12:00	0.2	0.2	0.4	0.3	0.2
2018/2/9 12:00	0.2	0.2	0.4	0.3	0.3
2018/2/16 12:00	0.2	0.2	0.4	0.3	0.2
2018/2/23 12:00	0.2	0.2	0.5	0.3	0.3
2018/3/2 12:00	0.2	0.2	0.4	0.3	0.3
2018/3/9 12:00	0.2	0.2	0.4	0.3	0.2
2018/3/16 12:00	0.2	0.2	0.3	0.2	0.2
2018/3/23 12:00	0.1	0.2	0.3	0.2	0.2
2018/3/30 12:00	0.1	0.2	0.3	0.2	0.2
2018/4/6 12:00	0.1	0.2	0.3	0.2	0.2
2018/4/13 12:00	0.1	0.2	0.4	0.2	0.2
2018/4/20 12:00	0.1	0.2	0.4	0.3	0.2
2018/4/27 12:00	0.2	0.2	0.4	0.2	0.2
2018/5/4 12:00	0.1	0.2	0.3	0.2	0.2
2018/5/11 12:00	0.2	0.2	0.3	0.1	0.2
2018/5/18 12:00	0.1	0.1	0.3	0.1	0.1
2018/5/25 12:00	0.1	0.2	0.3	0.1	0.1
2018/6/1 12:00	0.1	0.2	0.3	0.2	0.2
2018/6/8 12:00	0.1	0.2	0.3	0.2	0.2
2018/6/15 12:00	0.2	0.2	0.4	0.2	0.2
2018/6/22 12:00	0.2	0.2	0.4	0.2	0.2
2018/6/29 12:00	0.2	0.2	0.4	0.3	0.3
2018/7/6 12:00	0.2	0.2	0.4	0.3	0.3
2018/7/13 12:00	0.2	0.2	0.4	0.3	0.3
2018/7/20 12:00	0.2	0.3	0.4	0.3	0.3
2018/7/27 12:00	0.2	0.3	0.3	0.3	0.3
2018/8/3 12:00	0.2	0.3	0.5	0.3	0.3
2018/8/10 12:00	0.3	0.3	0.5	0.4	0.4
2018/8/17 12:00	0.3	0.3	0.6	0.4	0.4
2018/8/24 12:00	0.3	0.4	0.6	0.4	0.4
2018/8/31 12:00	0.3	0.4	0.7	0.5	0.5
2018/9/7 12:00	0.3	0.4	0.7	0.5	0.5
2018/9/14 12:00	0.3	0.4	0.7	0.5	0.5
2018/9/21 12:00	0.3	0.4	0.7	0.5	0.5
2018/9/28 12:00	0.3	0.4	0.6	0.4	0.5
2018/10/5 12:00	0.3	0.4	0.6	0.5	0.5
2018/10/12 12:00	0.3	0.4	0.6	0.5	0.5
2018/10/19 12:00	0.3	0.4	0.7	0.5	0.5
2018/10/26 12:00	0.3	0.4	0.7	0.6	0.5
2018/11/2 12:00	0.3	0.4	0.8	0.6	0.5
2018/11/9 12:00	0.3	0.4	0.8	0.6	0.6
2018/11/16 12:00	0.4	0.4	0.8	0.6	0.6
2018/11/23 12:00	0.4	0.5	0.9	0.7	0.6
2018/11/30 12:00	0.4	0.5	0.9	0.7	0.6
2018/12/7 12:00	0.4	0.5	0.9	0.7	0.6
2018/12/14 12:00	0.4	0.5	0.9	0.7	0.6
2018/12/21 12:00	0.4	0.5	1.0	0.7	0.6
2018/12/28 12:00	0.4	0.5	1.0	0.8	0.6
2019/1/4 12:00	0.4	0.5	1.0	0.8	0.7
2019/1/11 12:00	0.5	0.5	1.0	0.8	0.7
2019/1/18 12:00	0.5	0.6	1.1	0.8	0.7
2019/1/25 12:00	0.5	0.6	1.1	0.9	0.7
2019/2/1 12:00	0.5	0.6	1.1	0.9	0.7
2019/2/8 12:00	0.5	0.6	1.2	0.9	0.8
2019/2/15 12:00	0.5	0.6	1.2	1.0	0.8
2019/2/22 12:00	0.5	0.6	1.2	1.0	0.8
2019/3/1 12:00	0.5	0.7	1.3	1.0	0.8
2019/3/8 12:00	0.6	0.6	1.2	0.9	0.8
2019/3/15 12:00	0.5	0.6	1.1	0.9	0.8
2019/3/22 12:00	0.5	0.6	1.1	0.9	0.7
2019/3/29 12:00	0.5	0.6	1.1	0.9	0.8
2019/4/5 12:00	0.5	0.6	1.2	0.9	0.8
2019/4/12 12:00	0.5	0.6	1.2	0.9	0.8
2019/4/19 12:00	0.5	0.6	1.2	0.9	0.8
2019/4/26 12:00	0.5	0.6	1.2	1.0	0.8
2019/5/3 12:00	0.5	0.6	1.1	0.9	0.7
2019/5/10 12:00	0.5	0.6	1.1	0.9	0.7
2019/5/17 12:00	0.5	0.6	1.1	0.8	0.7
2019/5/24 12:00	0.5	0.6	1.1	0.8	0.7
2019/5/31 12:00	0.5	0.6	1.1	0.8	0.7
2019/6/7 12:00	0.5	0.6	1.1	0.8	0.7
2019/6/14 12:00	0.5	0.6	1.1	0.8	0.7
2019/6/21 12:00	0.5	0.6	1.1	0.8	0.7
2019/6/28 12:00	0.5	0.6	1.1	0.8	0.7
2019/7/5 12:00	0.5	0.6	1.1	0.8	0.7
2019/7/12 12:00	0.5	0.6	1.1	0.9	0.7
2019/7/19 12:00	0.5	0.6	1.1	0.9	0.7
2019/7/26 12:00	0.5	0.6	1.1	0.9	0.7
2019/8/2 12:00	0.5	0.6	1.1	0.9	0.7
2019/8/9 12:00	0.5	0.6	1.1	0.9	0.7
2019/8/16 12:00	0.5	0.6	1.2	0.9	0.7
2019/8/23 12:00	0.5	0.6	1.2	0.9	0.8
2019/8/30 12:00	0.5	0.6	1.2	0.9	0.8
2019/9/6 12:00	0.5	0.7	1.3	1.0	0.8
2019/9/13 12:00	0.5	0.7	1.2	0.9	0.8
2019/9/20 12:00	0.5	0.7	1.3	1.0	0.8
2019/9/27 12:00	0.5	0.7	1.3	1.0	0.8
2019/10/4 12:00	0.5	0.7	1.3	1.0	0.8
2019/10/11 12:00	0.6	0.7	1.4	1.1	0.9
2019/10/18 12:00	0.5	0.6	1.2	0.9	0.8
2019/10/25 12:00	0.5	0.6	1.1	0.9	0.8
2019/11/1 12:00	0.5	0.6	1.1	0.9	0.7
2019/11/8 12:00	0.5	0.6	1.2	0.9	0.8
2019/11/15 12:00	0.5	0.6	1.2	1.0	0.8
2019/11/22 12:00	0.5	0.7	1.3	1.0	0.8
2019/11/29 12:00	0.5	0.6	1.2	0.9	0.8
2019/12/6 12:00	0.5	0.6	1.2	1.0	0.8
2019/12/13 12:00	0.5	0.6	1.3	1.0	0.8
2019/12/20 12:00	0.5	0.6	1.3	1.0	0.8
2019/12/27 12:00	0.5	-	1.3	1.0	0.8
2020/1/3 12:00	0.5	-	1.3	1.0	0.9
2020/1/10 12:00	0.6	-	1.4	-	0.9
2020/1/17 12:00	0.6	-	1.4	-	0.9
2020/1/24 12:00	0.6	-	1.4	-	0.9
2020/1/31 12:00	0.5	-	1.4	-	0.9
2020/2/7 12:00	0.6	-	1.4	-	0.9
2020/2/14 12:00	0.6	-	1.4	-	-
2020/2/21 12:00	0.6	-	1.5	-	-
2020/2/28 12:00	0.6	-	1.5	-	-
2020/3/6 12:00	0.6	-	1.5	-	-
2020/3/13 12:00	0.6	-	1.5	-	-
2020/3/20 12:00	0.6	-	1.5	-	-
2020/3/27 12:00	0.6	-	1.5	-	-
2020/4/3 12:00	-	-	-	-	-
2020/4/10 12:00	-	-	-	-	-
2020/4/17 12:00	-	-	-	-	-
2020/4/24 12:00	-	-	-	-	-
2020/5/1 12:00	-	-	-	-	-
2020/5/8 12:00	-	-	-	-	-
2020/5/15 12:00	-	-	-	-	-
2020/5/22 12:00	-	-	-	-	-
2020/5/29 12:00	-	-	-	-	-
2020/6/5 12:00	-	-	-	-	-
2020/6/12 12:00	-	-	-	-	-
2020/6/19 12:00	-	-	-	-	-
2020/6/26 12:00	-	-	-	-	-
2020/7/3 12:00	-	-	-	-	-
2020/7/10 12:00	-	-	-	-	-
2020/7/17 12:00	-	-	-	-	-
2020/7/24 12:00	-	-	-	-	-
2020/7/31 12:00	-	-	-	-	-
2020/8/7 12:00	-	-	-	-	-
2020/8/14 12:00	-	-	-	-	-
2020/8/18	0.6	0.7	1.6	1.1	1.0
2020/8/20	-	-	-	-	-
2020/8/21 12:00	-	-	-	-	-
2020/8/25 12:00	-	-	-	-	-
2021/2/1	-	-	-	-	-
2021/2/17	-	-	-	-	1.3
2021/2/18	0.9	1.0	-	-	-
2021/2/19	-	-	-	-	-
2021/2/22	-	-	1.7	1.1	-
2021/2/25	-	-	-	-	-
2021/2/26	-	-	-	-	-

[地下水位]				
事業区域名				
計測地点地番(高)				
計測日				
地下水位				
地下水位				
地下水位				
地下水位				
2017/1/25 12:00	7.15	-1.556	7.23	-1.266
2017/1/29 12:00	7.41	-1.896	6.78	-1.718
2018/1/9 12:00	7.31	-1.596	6.68	-1.806
2018/1/12 12:00	7.27	-2.042	6.65	-1.846
2018/1/19 12:00	7.24	-2.068	6.66	-1.844
2018/1/26 12:00	7.24	-2.071	6.70	-1.802
2018/2/2 12:00	7.17	-2.135	6.66	-1.850
2018/2/9 12:00	7.17	-2.145	6.66	-1.839
2018/2/16 12:00	7.17	-2.135	6.69	-1.814
2018/2/23 12:00	7.19	-2.164	6.68	-1.849
2018/3/2 12:00	7.20	-2.109	6.72	-1.781
2018/3/9 12:00	7.23	-2.081	6.82	-1.682
2018/3/16 12:00	7.38	-1.830	7.06	-1.442
2018/3/23 12:00	7.48	-1.829	7.29	-1.296
2018/3/30 12:00	7.51	-1.800	7.14	-1.358
2018/4/6 12:00	7.52	-1.787	7.14	-1.357
2018/4/13 12:00	7.49	-1.822	7.08	-1.419
2018/4/20 12:00	7.46	-1.850	7.08	-1.415
2018/4/27 12:00	7.49	-1.820	7.18	-1.318
2018/5/4 12:00	7.54	-1.775	7.21	-1.288
2018/5/11 12:00	7.51	-1.800	7.21	-1.283
2018/5/18 12:00	7.54	-1.666	7.29	-1.207
2018/5/25 12:00	7.65	-1.660	7.23	-1.269
2018/6/1 12:00	7.64	-1.672	7.18	-1.318
2018/6/8 12:00	7.61	-1.688	7.10	-1.397
2018/6/15 12:00	7.62	-1.684	7.10	-1.403
2018/6/22 12:00	7.62	-1.686	7.11	-1.391
2018/6/29 12:00	7.61	-1.700	7.03	-1.460
2018/7/6 12:00	7.58	-1.728	6.96	-1.537
2018/7/13 12:00	7.56	-1.751	6.98	-1.516
2018/7/20 12:00	7.55	-1.784	6.92	-1.583
2018/7/27 12:00	7.52	-1.788	6.88	-1.616
2018/8/3 12:00	7.55	-1.760	6.94	-1.565
2018/8/10 12:00	7.54	-1.766	6.85	-1.651
2018/8/17 12:00	7.50	-1.814	6.81	-1.726
2018/8/24 12:00	7.45	-1.857	6.67	-1.828
2018/8/31 12:00	7.42	-1.888	6.60	-1.898
2018/9/7 12:00	7.46	-1.847	6.80	-1.704
2018/9/14 12:00	7.46	-1.847	6.82	-1.692
2018/9/21 12:00	7.53	-1.779	6.90	-1.602
2018/9/28 12:00	7.69	-1.620	7.10	-1.401
2018/10/5 12:00	7.86	-1.450	7.05	-1.449
2018/10/12 12:00	7.84	-1.474	6.89	-1.611
2018/10/19 12:00	7.74	-1.566	6.79	-1.714
2018/10/26 12:00	7.65	-1.657	6.70	-1.796
2018/11/2 12:00	7.51	-1.744	6.66	-1.862
2018/11/9 12:00	7.52	-1.784	6.62	-1.882
2018/11/16 12:00	7.45	-1.856	6.54	-1.957
2018/11/23 12:00	7.42	-1.885	6.49	-2.006
2018/11/30 12:00	7.36	-1.947	6.43	-2.072
2018/12/7 12:00	7.34	-1.969	6.40	-2.096
2018/12/14 12:00	7.31	-2.003	6.41	-2.089
2018/12/21 12:00	7.27	-2.038	6.32	-2.132
2018/12/28 12:00	7.31	-2.003	6.33	-2.170
2019/1/4 12:00	7.30	-2.011	6.24	-2.258
2019/1/11 12:00	7.33	-1.980	6.24	-2.285
2019/1/18 12:00	7.32	-1.992	6.22	-2.332
2019/1/25 12:00	7.30	-2.006	6.18	-2.315
2019/2/1 12:00	7.31	-2.003	6.21	-2.294
2019/2/8 12:00	7.36	-1.969	6.25	-2.255
2019/2/15 12:00	7.39	-1.920	6.22	-2.284
2019/2/22 12:00	7.28	-2.030	6.23	-2.268
2019/3/1 12:00	7.35	-1.959	6.57	-1.934
2019/3/8 12:00	7.58	-1.734	6.80	-1.617
2019/3/15 12:00	7.08	-2.231	6.44	-2.061
2019/3/22 12:00	7.22	-2.094	6.54	-1.955
2019/3/29 12:00	7.16	-2.125	6.42	-2.050
2019/4/5 12:00	7.18	-2.126	6.40	-2.095
2019/4/12 12:00	7.16	-2.149	6.38	-2.124
2019/4/19 12:00	7.18	-2.135	6.42	-2.081
2019/4/26 12:00	7.16	-2.128	6.41	-2.092
2019/5/3 12:00	7.19	-2.119	6.49	-2.007
2019/5/10 12:00	7.24	-2.072	6.52	-1.979
2019/5/17 12:00	7.21	-2.085	6.45	-2.049
2019/5/24 12:00	7.29	-2.016	6.65	-1.849
2019/5/31 12:00	7.31	-1.999	6.59	-1.907
2019/6/7 12:00	7.30	-2.014	6.52	-1.978
2019/6/14 12:00	7.34	-1.965	6.70	-1.801
2019/6/21 12:00	7.48	-1.826	6.81	-1.694
2019/6/28 12:00	7.63	-1.682	6.93	-1.571
2019/7/5 12:00	7.64	-1.671	6.93	-1.576
2019/7/12 12:00	7.64	-1.674	6.80	-1.702
2019/7/19 12:00	7.71	-1.599	6.93	-1.569
2019/7/26 12:00	7.68	-1.635	6.78	-1.718
2019/8/2 12:00	7.60	-1.706	6.68	-1.805
2019/8/9 12:00	7.56	-1.755	6.61	-1.891
2019/8/16 12:00	7.54	-1.768	6.58	-1.916
2019/8/23 12:00	7.46	-1.847	6.53	-1.974
2019/8/30 12:00	7.48	-1.831	6.52	-1.983
2019/9/6 12:00	7.41	-1.899	6.54	-1.962
2019/9/13 12:00	7.51	-1.798	6.73	-1.767
2019/9/20 12:00	7.52	-1.788	6.69	-1.825
2019/9/27 12:00	7.48	-1.852	6.59	-1.910
2019/10/4 12:00	7.47	-1.841	6.55	-1.954
2019/10/11 12:00	7.39	-1.918	6.46	-2.043
2019/10/18 12:00	7.30	-1.914	6.44	-2.057
2019/10/25 12:00	7.87	-1.439	7.02	-1.480
2019/11/1 12:00	7.89	-1.418	6.89	-1.607
2019/11/8 12:00	7.73	-1.579	6.68	-1.821
2019/11/15 12:00	7.59	-1.716	6.54	-1.960
2019/11/22 12:00	7.43	-1.875	6.42	-2.084
2019/11/29 12:00	7.66	-1.647	6.71	-1.792
2019/12/6 12:00	7.56	-1.728	6.56	-1.941
2019/12/13 12:00	7.47	-1.837	6.45	-2.047
2019/12/20 12:00	7.40	-1.914	6.41	-2.088
2019/12/27 12:00	7.37	-1.938	6.48	-2.037
2020/1/3 12:00	7.25	-2.062	6.37	-2.134
2020/1/10 12:00	7.24	-2.068	6.33	-2.167
2020/1/17 12:00	7.18	-2.129	6.29	-2.214
2020/1/24 12:00	7.14	-2.172	6.26	-2.241
2020/1/31 12:00	7.24	-2.068	6.47	-2.034
2020/2/7 12:00	7.26	-2.048	6.36	-2.140
2020/2/14 12:00	7.29	-2.064	6.37	-2.132
2020/2/21 12:00	7.18	-2.154	6.26	-2.241
2020/2/28 12:00	7.16	-2.149	6.30	-2.204
2020/3/6 12:00	7.14	-2.167	6.30	-2.201
2020/3/13 12:00	7.11	-2.205	6.29	-2.212
2020/3/20 12:00	7.17	-2.144	6.42	-2.083
2020/3/27 12:00	7.11	-2.205	6.37	-2.133
2020/4/3 12:00	7.20	-2.111	6.58	-1.938
2020/4/10 12:00	7.28	-2.030	6.55	-1.949
2020/4/17 12:00	7.32	-1.991	6.60	-1.895
2020/4/24 12:00	7.54	-1.767	6.77	-1.729
2020/5/1 12:00	7.47	-1.843	6.62	-1.876
2020/5/8 12:00	7.43	-1.876	6.63	-1.872
2020/5/15 12:00	7.43	-1.881	6.57	-1.931
2020/5/22 12:00	7.44	-1.870	6.65	-1.846
2020/5/29 12:00	7.48	-1.826	6.68	-1.824
2020/6/5 12:00	7.49	-1.822	6.62	-1.876
2020/6/12 12:00	7.45	-1.863	6.58	-1.916
2020/6/19 12:00	7.56	-1.751	6.76	-1.737
2020/6/26 12:00	7.62	-1.688	6.82	-1.680
2020/7/3 12:00	7.79	-1.524	6.99	-1.513
2020/7/10 12:00	7.88	-1.453	7.03	-1.466
2020/7/17 12:00	7.80	-1.509	6.83	-1.605
2020/7/24 12:00	7.73	-1.584	6.84	-1.655
2020/7/31 12:00	7.83	-1.480	6.92	-1.576
2020/8/7 12:00	7.73	-1.565	6.76	-1.711
2020/8/14 12:00	7.61	-1.699	6.64	-1.864
2020/8/18	-	-	-	-
2020/8/20	-	-	-	-
2020/8/21 12:00	7.51	-1.804	6.53	-1.970
2020/8/28 12:00	7.47	-1.840	6.48	-2.017
2021/2/17	-	-	-	-
2021/2/18	-	-	-	-
2021/2/19	7.21	-2.100	-	-
2021/2/22	-	-	-	-
2021/2/25	-	-	6.49	-2.010
2021/2/26	-	-	-	-
I段観測水位	7.19	-2.12	7.19	-1.31
II段観測水位	7.15	-2.17	7.15	-1.36
III段観測水位	7.10	-2.21	7.10	-1.40

[决下量]		
事業区域名	7・12丁目(其地部)	
計測地点名	7	12
計測日	决下量 (cm)	决下量 (cm)
2017/1/25 12:00	0.0	0.0
2017/1/28 12:00	0.2	0.1
2018/1/5 12:00	0.2	0.1
2018/1/12 12:00	0.3	0.1
2018/1/19 12:00	0.3	0.1
2018/1/26 12:00	0.3	0.1
2018/2/2 12:00	0.4	0.2
2018/2/9 12:00	0.4	0.2
2018/2/16 12:00	0.4	0.2
2018/2/23 12:00	0.4	0.2
2018/3/2 12:00	0.4	0.2
2018/3/9 12:00	0.4	0.2
2018/3/16 12:00	0.4	0.2
2018/3/23 12:00	0.3	0.2
2018/3/30 12:00	0.4	0.2
2018/4/6 12:00	0.3	0.2
2018/4/13 12:00	0.4	0.2
2018/4/20 12:00	0.4	0.2
2018/4/27 12:00	0.4	0.2
2018/5/4 12:00	0.3	0.2
2018/5/11 12:00	0.3	0.2
2018/5/18 12:00	0.3	0.2
2018/5/25 12:00	0.3	0.2
2018/6/1 12:00	0.3	0.2
2018/6/8 12:00	0.3	0.2
2018/6/15 12:00	0.3	0.2
2018/6/22 12:00	0.3	0.2
2018/6/29 12:00	0.4	0.2
2018/7/6 12:00	0.4	0.3
2018/7/13 12:00	0.4	0.3
2018/7/20 12:00	0.4	0.3
2018/7/27 12:00	0.4	0.3
2018/8/3 12:00	0.4	0.4
2018/8/10 12:00	0.5	0.4
2018/8/17 12:00	0.5	0.4
2018/8/24 12:00	0.6	0.5
2018/8/31 12:00	0.7	0.5
2018/9/7 12:00	0.7	0.5
2018/9/14 12:00	0.7	0.5
2018/9/21 12:00	0.7	0.5
2018/9/28 12:00	0.6	0.5
2018/10/5 12:00	0.6	0.5
2018/10/12 12:00	0.6	0.5
2018/10/19 12:00	0.6	0.5
2018/10/26 12:00	0.7	0.5
2018/11/2 12:00	0.7	0.5
2018/11/9 12:00	0.7	0.5
2018/11/16 12:00	0.7	0.5
2018/11/23 12:00	0.7	0.5
2018/11/30 12:00	0.8	0.5
2018/12/7 12:00	0.8	0.6
2018/12/14 12:00	0.8	0.6
2018/12/21 12:00	0.8	0.6
2018/12/28 12:00	0.8	0.6
2019/1/4 12:00	0.9	0.6
2019/1/11 12:00	0.9	0.6
2019/1/18 12:00	0.9	0.7
2019/1/25 12:00	0.9	0.7
2019/2/1 12:00	1.0	0.7
2019/2/8 12:00	1.0	0.7
2019/2/15 12:00	1.0	0.7
2019/2/22 12:00	1.0	0.7
2019/3/1 12:00	1.1	0.8
2019/3/8 12:00	1.0	0.8
2019/3/15 12:00	1.0	0.7
2019/3/22 12:00	1.0	0.7
2019/3/29 12:00	1.0	0.7
2019/4/5 12:00	1.0	0.7
2019/4/12 12:00	1.0	0.7
2019/4/19 12:00	1.0	0.7
2019/4/26 12:00	1.0	0.8
2019/5/3 12:00	1.0	0.8
2019/5/10 12:00	0.9	0.8
2019/5/17 12:00	1.0	0.8
2019/5/24 12:00	0.9	0.8
2019/5/31 12:00	0.9	0.8
2019/6/7 12:00	0.9	0.8
2019/6/14 12:00	0.9	0.8
2019/6/21 12:00	0.9	0.8
2019/6/28 12:00	0.9	0.8
2019/7/5 12:00	0.9	0.8
2019/7/12 12:00	0.9	0.8
2019/7/19 12:00	0.9	0.8
2019/7/26 12:00	0.9	0.8
2019/8/2 12:00	0.9	0.8
2019/8/9 12:00	0.9	0.8
2019/8/16 12:00	0.9	0.8
2019/8/23 12:00	0.9	0.8
2019/8/30 12:00	0.9	0.8
2019/9/6 12:00	1.0	0.9
2019/9/13 12:00	0.9	0.9
2019/9/20 12:00	1.0	0.8
2019/9/27 12:00	1.0	0.9
2019/10/4 12:00	1.0	0.8
2019/10/11 12:00	1.0	0.9
2019/10/18 12:00	0.9	0.8
2019/10/25 12:00	0.8	0.8
2019/11/1 12:00	0.8	0.8
2019/11/8 12:00	0.9	0.8
2019/11/15 12:00	0.9	0.8
2019/11/22 12:00	1.0	0.8
2019/11/29 12:00	0.9	0.8
2019/12/6 12:00	0.9	0.8
2019/12/13 12:00	0.9	0.8
2019/12/20 12:00	1.0	0.8
2019/12/27 12:00	1.0	0.8
2020/1/3 12:00	1.0	0.8
2020/1/10 12:00	1.0	0.8
2020/1/17 12:00	1.1	0.8
2020/1/24 12:00	1.1	0.8
2020/1/31 12:00	1.1	0.8
2020/2/7 12:00	1.1	0.9
2020/2/14 12:00	1.1	0.8
2020/2/21 12:00	1.1	0.9
2020/2/28 12:00	1.1	0.9
2020/3/6 12:00	1.1	0.9
2020/3/13 12:00	1.1	0.9
2020/3/20 12:00	1.1	0.9
2020/3/27 12:00	1.1	0.9
2020/4/3 12:00	1.1	0.9
2020/4/10 12:00	1.1	0.9
2020/4/17 12:00	1.1	0.9
2020/4/24 12:00	1.0	0.8
2020/5/1 12:00	1.0	0.9
2020/5/8 12:00	1.0	0.9
2020/5/15 12:00	1.0	0.9
2020/5/22 12:00	1.0	0.9
2020/5/29 12:00	1.0	0.9
2020/6/5 12:00	1.0	0.9
2020/6/12 12:00	1.0	0.9
2020/6/19 12:00	1.0	0.9
2020/6/26 12:00	1.0	0.9
2020/7/3 12:00	0.9	0.9
2020/7/10 12:00	0.9	0.9
2020/7/17 12:00	0.9	0.9
2020/7/24 12:00	0.9	0.9
2020/7/31 12:00	0.9	0.9
2020/8/7 12:00	0.9	0.9
2020/8/14 12:00	1.0	0.9
2020/8/18	1.0	0.7
2020/8/20	-	-
2020/8/21 12:00	1.0	0.9
2020/8/23 12:00	1.0	0.9
2021/2/11	1.5	-
2021/2/18	-	-
2021/2/19	-	-
2021/2/22	-	1.0
2021/2/25	-	-
2021/2/26	-	-

[地下水]				
事業区域名 計測地点名	7+12目(道路部)			
	元1 沈下量 (cm)	元2 沈下量 (cm)	元3 沈下量 (cm)	TD1(ポンプ部) 沈下量 (cm)
計測日				
2017/11/25 12:00	0.0	0.0	0.0	0.0
2017/12/25 12:00	0.1	0.2	0.2	0.1
2018/1/5 12:00	0.1	0.2	0.3	0.1
2018/1/12 12:00	0.1	0.3	0.3	0.2
2018/1/19 12:00	0.1	0.3	0.3	0.2
2018/1/26 12:00	0.1	0.3	0.3	0.2
2018/2/2 12:00	0.1	0.4	0.4	0.2
2018/2/9 12:00	0.2	0.4	0.4	0.2
2018/2/16 12:00	0.2	0.4	0.4	0.2
2018/2/23 12:00	0.2	0.4	0.4	0.2
2018/3/2 12:00	0.2	0.4	0.4	0.3
2018/3/9 12:00	0.2	0.4	0.4	0.3
2018/3/16 12:00	0.2	0.4	0.3	0.2
2018/3/23 12:00	0.2	0.4	0.3	0.2
2018/3/30 12:00	0.2	0.4	0.3	0.2
2018/4/6 12:00	0.2	0.3	0.3	0.2
2018/4/13 12:00	0.2	0.4	0.3	0.2
2018/4/20 12:00	0.2	0.4	0.3	0.2
2018/4/27 12:00	0.2	0.4	0.3	0.2
2018/5/4 12:00	0.2	0.3	0.3	0.2
2018/5/11 12:00	0.2	0.4	0.3	0.2
2018/5/18 12:00	0.2	0.3	0.2	0.2
2018/5/25 12:00	0.2	0.3	0.2	0.2
2018/6/1 12:00	0.2	0.3	0.3	0.3
2018/6/8 12:00	0.2	0.4	0.3	0.3
2018/6/15 12:00	0.2	0.4	0.3	0.3
2018/6/22 12:00	0.2	0.4	0.3	0.3
2018/6/29 12:00	0.3	0.4	0.4	0.3
2018/7/6 12:00	0.3	0.4	0.4	0.4
2018/7/13 12:00	0.3	0.4	0.4	0.4
2018/7/20 12:00	0.3	0.5	0.4	0.4
2018/7/27 12:00	0.4	0.5	0.4	0.4
2018/8/3 12:00	0.4	0.5	0.4	0.5
2018/8/10 12:00	0.4	0.5	0.5	0.5
2018/8/17 12:00	0.4	0.5	0.5	0.5
2018/8/24 12:00	0.5	0.6	0.6	0.6
2018/8/31 12:00	0.5	0.6	0.6	0.6
2018/9/7 12:00	0.5	0.6	0.6	0.6
2018/9/14 12:00	0.5	0.6	0.6	0.6
2018/9/21 12:00	0.5	0.6	0.6	0.6
2018/9/28 12:00	0.5	0.6	0.6	0.6
2018/10/5 12:00	0.5	0.5	0.6	0.6
2018/10/12 12:00	0.5	0.6	0.6	0.6
2018/10/19 12:00	0.5	0.6	0.6	0.6
2018/10/26 12:00	0.5	0.6	0.7	0.6
2018/11/2 12:00	0.5	0.6	0.7	0.6
2018/11/9 12:00	0.5	0.7	0.7	0.6
2018/11/16 12:00	0.5	0.7	0.7	0.6
2018/11/23 12:00	0.5	0.7	0.7	0.6
2018/11/30 12:00	0.5	0.7	0.8	0.6
2018/12/7 12:00	0.6	0.7	0.8	0.6
2018/12/14 12:00	0.6	0.8	0.8	0.7
2018/12/21 12:00	0.6	0.8	0.8	0.7
2018/12/28 12:00	0.6	0.8	0.8	0.7
2019/1/4 12:00	0.6	0.8	0.9	0.7
2019/1/11 12:00	0.6	0.8	0.9	0.7
2019/1/18 12:00	0.6	0.8	0.9	0.7
2019/1/25 12:00	0.6	0.9	1.0	0.8
2019/2/1 12:00	0.6	0.9	1.0	0.8
2019/2/8 12:00	0.7	0.9	1.0	0.8
2019/2/15 12:00	0.7	1.0	1.0	0.8
2019/2/22 12:00	0.7	1.0	1.1	0.8
2019/3/1 12:00	0.7	1.0	1.1	0.8
2019/3/8 12:00	0.7	1.0	1.0	0.8
2019/3/15 12:00	0.7	0.9	1.0	0.8
2019/3/22 12:00	0.7	0.9	1.0	0.8
2019/3/29 12:00	0.7	0.9	1.0	0.8
2019/4/5 12:00	0.7	0.9	1.0	0.8
2019/4/12 12:00	0.7	0.9	1.0	0.8
2019/4/19 12:00	0.7	0.9	1.0	0.8
2019/4/26 12:00	0.7	1.0	1.0	0.8
2019/5/3 12:00	0.7	0.9	1.0	0.9
2019/5/10 12:00	0.7	0.9	0.9	0.9
2019/5/17 12:00	0.8	0.9	0.9	0.9
2019/5/24 12:00	0.7	0.9	0.9	0.9
2019/5/31 12:00	0.8	0.9	0.9	0.9
2019/6/7 12:00	0.8	0.9	0.9	0.9
2019/6/14 12:00	0.8	0.9	0.9	0.9
2019/6/21 12:00	0.8	0.9	0.9	0.9
2019/6/28 12:00	0.7	0.9	0.9	0.9
2019/7/5 12:00	0.7	0.9	0.9	0.9
2019/7/12 12:00	0.7	0.9	0.9	0.9
2019/7/19 12:00	0.7	0.9	0.9	0.9
2019/7/26 12:00	0.8	0.9	1.0	0.9
2019/8/2 12:00	0.8	0.9	1.0	0.9
2019/8/9 12:00	0.8	0.9	1.0	0.9
2019/8/16 12:00	0.8	0.9	1.0	0.9
2019/8/23 12:00	0.8	0.9	1.0	0.9
2019/8/30 12:00	0.8	0.9	1.0	1.0
2019/9/6 12:00	0.8	1.0	1.1	1.0
2019/9/13 12:00	0.8	1.0	1.0	1.0
2019/9/20 12:00	0.8	1.0	1.0	1.0
2019/9/27 12:00	0.8	1.0	1.1	1.0
2019/10/4 12:00	0.8	1.0	1.1	0.9
2019/10/11 12:00	0.8	1.0	1.1	1.0
2019/10/18 12:00	0.8	0.9	1.0	0.9
2019/10/25 12:00	0.8	0.9	1.0	0.9
2019/11/1 12:00	0.8	0.9	1.0	0.9
2019/11/8 12:00	0.8	0.9	1.0	0.9
2019/11/15 12:00	0.8	0.9	1.1	0.9
2019/11/22 12:00	0.8	0.9	1.1	0.9
2019/11/29 12:00	0.8	0.9	1.0	0.9
2019/12/6 12:00	0.8	0.9	1.1	0.9
2019/12/13 12:00	0.8	1.0	1.1	0.9
2019/12/20 12:00	0.8	1.0	1.1	0.9
2019/12/27 12:00	0.8	1.0	1.1	0.9
2020/1/3 12:00	0.8	1.0	1.2	0.9
2020/1/10 12:00	0.8	1.0	1.2	0.9
2020/1/17 12:00	0.8	1.1	1.2	0.9
2020/1/24 12:00	0.8	1.1	1.2	0.9
2020/1/31 12:00	0.8	1.0	1.2	0.9
2020/2/7 12:00	0.8	1.1	1.2	0.9
2020/2/14 12:00	0.8	1.1	1.2	0.9
2020/2/21 12:00	0.8	1.1	1.2	1.0
2020/2/28 12:00	0.8	1.1	1.2	1.0
2020/3/6 12:00	0.8	1.1	1.2	1.0
2020/3/13 12:00	0.8	1.1	1.3	0.9
2020/3/20 12:00	0.8	1.1	1.2	0.9
2020/3/27 12:00	0.8	1.1	1.3	1.0
2020/4/3 12:00	0.8	1.1	1.2	1.0
2020/4/10 12:00	0.8	1.1	1.2	0.9
2020/4/17 12:00	0.8	1.1	1.2	1.0
2020/4/24 12:00	0.8	1.0	1.2	0.9
2020/5/1 12:00	0.8	1.0	1.2	0.9
2020/5/8 12:00	0.8	1.0	1.1	1.0
2020/5/15 12:00	0.8	1.0	1.1	1.0
2020/5/22 12:00	0.8	1.0	1.1	1.0
2020/5/29 12:00	0.8	1.0	1.1	1.0
2020/6/5 12:00	0.8	1.0	1.2	1.0
2020/6/12 12:00	0.8	1.0	1.2	1.0
2020/6/19 12:00	0.8	1.1	1.2	1.0
2020/6/26 12:00	0.8	1.1	1.2	1.0
2020/7/3 12:00	0.8	1.0	1.2	1.0
2020/7/10 12:00	0.8	1.0	1.2	1.0
2020/7/17 12:00	0.8	1.0	1.2	1.0
2020/7/24 12:00	0.8	1.0	1.2	1.0
2020/7/31 12:00	0.8	1.0	1.2	1.0
2020/8/7 12:00	0.8	1.0	1.2	1.0
2020/8/14 12:00	0.8	1.1	1.2	1.0
2020/8/18	-	-	-	0.8
2020/8/20	-	-	-	-
2020/8/21 12:00	0.9	1.1	1.3	1.0
2020/8/23 12:00	0.9	1.1	1.3	1.1
2021/2/11	-	-	-	-
2021/2/18	-	-	-	-
2021/2/19	-	-	-	-
2021/2/22	1.1	-	-	1.1
2021/2/25	-	-	-	-
2021/2/26	-	-	-	-

※TE 2は欠番

[地下水位]		
事業区域名	8丁目(道路部)	
計測地名	計測地	
計測地点地高(T.P.m)	8.94	
計測日	地下水位(T.P.m)	地下水位(0m)
2017/11/25 12:00	7.71	-1.227
2017/12/25 12:00	7.50	-1.440
2018/1/5 12:00	7.29	-1.651
2018/1/12 12:00	7.27	-1.666
2018/1/19 12:00	7.28	-1.662
2018/1/26 12:00	7.36	-1.577
2018/2/2 12:00	7.37	-1.566
2018/2/9 12:00	7.41	-1.535
2018/2/16 12:00	7.43	-1.512
2018/2/23 12:00	7.45	-1.493
2018/3/2 12:00	7.61	-1.332
2018/3/9 12:00	7.93	-1.008
2018/3/16 12:00	7.92	-1.024
2018/3/23 12:00	7.92	-1.021
2018/3/30 12:00	7.89	-1.047
2018/4/6 12:00	7.83	-1.110
2018/4/13 12:00	7.73	-1.215
2018/4/20 12:00	7.74	-1.202
2018/4/27 12:00	7.86	-1.083
2018/5/4 12:00	7.80	-1.142
2018/5/11 12:00	7.92	-1.014
2018/5/18 12:00	7.92	-1.024
2018/5/25 12:00	7.77	-1.171
2018/6/1 12:00	7.63	-1.311
2018/6/8 12:00	7.63	-1.313
2018/6/15 12:00	7.47	-1.474
2018/6/22 12:00	7.42	-1.521
2018/6/29 12:00	7.50	-1.444
2018/7/6 12:00	7.41	-1.526
2018/7/13 12:00	7.47	-1.468
2018/7/20 12:00	7.50	-1.438
2018/7/27 12:00	7.47	-1.468
2018/8/3 12:00	5.76	-3.178
2018/8/10 12:00	5.77	-3.175
2018/8/17 12:00	5.76	-3.163
2018/8/24 12:00	5.78	-3.162
2018/8/31 12:00	6.66	-2.279
2018/9/7 12:00	5.88	-3.057
2018/9/14 12:00	5.93	-3.013
2018/9/21 12:00	5.88	-3.055
2018/9/28 12:00	5.89	-3.052
2018/10/5 12:00	5.89	-3.052
2018/10/12 12:00	5.89	-3.049
2018/10/19 12:00	5.90	-3.045
2018/10/26 12:00	5.90	-3.044
2018/11/2 12:00	5.90	-3.040
2018/11/9 12:00	5.90	-3.039
2018/11/16 12:00	5.90	-3.039
2018/11/23 12:00	5.91	-3.026
2018/11/30 12:00	5.90	-3.036
2018/12/7 12:00	5.90	-3.035
2018/12/14 12:00	5.91	-3.032
2018/12/21 12:00	5.91	-3.026
2018/12/28 12:00	5.91	-3.027
2019/1/4 12:00	5.92	-3.024
2019/1/11 12:00	5.92	-3.021
2019/1/18 12:00	5.92	-3.020
2019/1/25 12:00	5.92	-3.019
2019/2/1 12:00	5.92	-3.018
2019/2/8 12:00	5.92	-3.022
2019/2/15 12:00	5.92	-3.019
2019/2/22 12:00	5.92	-3.022
2019/3/1 12:00	5.91	-3.030
2019/3/8 12:00	5.91	-3.032
2019/3/15 12:00	5.91	-3.026
2019/3/22 12:00	5.91	-3.028
2019/3/29 12:00	5.90	-3.035
2019/4/5 12:00	5.91	-3.033
2019/4/12 12:00	5.88	-3.080
2019/4/19 12:00	5.84	-3.101
2019/4/26 12:00	5.76	-3.180
2019/5/3 12:00	5.75	-3.186
2019/5/10 12:00	5.75	-3.192
2019/5/17 12:00	5.75	-3.191
2019/5/24 12:00	5.75	-3.194
2019/5/31 12:00	5.90	-3.036
2019/6/7 12:00	5.90	-3.037
2019/6/14 12:00	5.90	-3.040
2019/6/21 12:00	5.90	-3.043
2019/6/28 12:00	5.89	-3.046
2019/7/5 12:00	5.89	-3.051
2019/7/12 12:00	5.89	-3.048
2019/7/19 12:00	5.89	-3.050
2019/7/26 12:00	5.89	-3.051
2019/8/2 12:00	5.88	-3.051
2019/8/9 12:00	5.88	-3.056
2019/8/16 12:00	5.88	-3.063
2019/8/23 12:00	5.89	-3.047
2019/8/30 12:00	5.87	-3.072
2019/9/6 12:00	5.87	-3.069
2019/9/13 12:00	5.88	-3.083
2019/9/20 12:00	5.86	-3.077
2019/9/27 12:00	5.86	-3.077
2019/10/4 12:00	5.87	-3.067
2019/10/11 12:00	5.88	-3.062
2019/10/18 12:00	5.88	-3.076
2019/10/25 12:00	5.88	-3.056
2019/11/1 12:00	5.88	-3.063
2019/11/8 12:00	5.92	-3.019
2019/11/15 12:00	5.93	-3.015
2019/11/22 12:00	5.95	-2.986
2019/11/29 12:00	5.87	-3.073
2019/12/6 12:00	5.87	-3.073
2019/12/13 12:00	5.88	-3.063
2019/12/20 12:00	5.89	-3.046
2019/12/27 12:00	5.92	-3.019
2020/1/3 12:00	5.91	-2.988
2020/1/10 12:00	5.99	-2.949
2020/1/17 12:00	6.02	-2.916
2020/1/24 12:00	6.03	-2.906
2020/1/31 12:00	5.90	-3.042
2020/2/7 12:00	5.89	-3.052
2020/2/14 12:00	5.89	-3.052
2020/2/21 12:00	5.89	-3.051
2020/2/28 12:00	5.89	-3.049
2020/3/6 12:00	5.89	-3.054
2020/3/13 12:00	5.88	-3.064
2020/3/20 12:00	5.87	-3.066
2020/3/27 12:00	5.87	-3.071
2020/4/3 12:00	-	-
2020/4/10 12:00	-	-
2020/4/17 12:00	-	-
2020/4/24 12:00	-	-
2020/5/1 12:00	-	-
2020/5/8 12:00	-	-
2020/5/15 12:00	-	-
2020/5/22 12:00	-	-
2020/5/29 12:00	-	-
2020/6/5 12:00	-	-
2020/6/12 12:00	-	-
2020/6/19 12:00	-	-
2020/6/26 12:00	-	-
2020/7/3 12:00	-	-
2020/7/10 12:00	-	-
2020/7/17 12:00	-	-
2020/7/24 12:00	-	-
2020/7/31 12:00	-	-
2020/8/7 12:00	-	-
2020/8/14 12:00	-	-
2020/8/18	-	-
2020/8/20	5.85	-3.090
2020/8/21 12:00	-	-
2020/8/28 12:00	-	-
2021/2/17	-	-
2021/2/18	-	-
2021/2/19	-	-
2021/2/22	-	-
2021/2/25	5.83	-3.110
2021/2/26	-	-

[沈下量]		8丁目(道路部)	
事業区域名	SE	8D	(沈下量)
計測地点名	沈下量	沈下量	
	(cm)	(cm)	
計測日			
2017/11/25 12:00	0.0		0.0
2017/12/25 12:00	0.3		0.1
2018/1/5 12:00	0.3		0.1
2018/1/12 12:00	0.3		0.1
2018/1/19 12:00	0.4		0.1
2018/1/26 12:00	0.4		0.1
2018/2/2 12:00	0.4		0.2
2018/2/9 12:00	0.4		0.2
2018/2/16 12:00	0.4		0.2
2018/2/23 12:00	0.4		0.2
2018/3/2 12:00	0.4		0.2
2018/3/9 12:00	0.4		0.2
2018/3/16 12:00	0.4		0.1
2018/3/23 12:00	0.3		0.1
2018/3/30 12:00	0.3		0.1
2018/4/6 12:00	0.3		0.1
2018/4/13 12:00	0.3		0.1
2018/4/20 12:00	0.4		0.1
2018/4/27 12:00	0.4		0.1
2018/5/4 12:00	0.4		0.1
2018/5/11 12:00	0.4		0.1
2018/5/18 12:00	0.3		0.1
2018/5/25 12:00	0.3		0.1
2018/6/1 12:00	0.4		0.1
2018/6/8 12:00	0.4		0.1
2018/6/15 12:00	0.4		0.1
2018/6/22 12:00	0.4		0.1
2018/6/29 12:00	0.4		0.2
2018/7/6 12:00	0.4		0.2
2018/7/13 12:00	0.5		0.2
2018/7/20 12:00	0.5		0.2
2018/7/27 12:00	0.5		0.2
2018/8/3 12:00	0.6		0.2
2018/8/10 12:00	0.7		0.3
2018/8/17 12:00	0.7		0.3
2018/8/24 12:00	0.8		0.4
2018/8/31 12:00	0.8		0.4
2018/9/7 12:00	0.8		0.4
2018/9/14 12:00	0.9		0.4
2018/9/21 12:00	0.9		0.4
2018/9/28 12:00	0.8		0.3
2018/10/5 12:00	0.8		0.3
2018/10/12 12:00	0.8		0.3
2018/10/19 12:00	0.9		0.4
2018/10/26 12:00	0.9		0.4
2018/11/2 12:00	1.0		0.4
2018/11/9 12:00	1.0		0.4
2018/11/16 12:00	1.2		0.4
2018/11/23 12:00	1.3		0.4
2018/11/30 12:00	1.3		0.4
2018/12/7 12:00	1.3		0.4
2018/12/14 12:00	1.3		0.4
2018/12/21 12:00	1.4		0.5
2018/12/28 12:00	1.4		0.4
2019/1/4 12:00	1.4		0.5
2019/1/11 12:00	1.5		0.5
2019/1/18 12:00	1.5		0.5
2019/1/25 12:00	1.5		0.5
2019/2/1 12:00	1.6		0.5
2019/2/8 12:00	1.6		0.5
2019/2/15 12:00	1.6		0.6
2019/2/22 12:00	1.7		0.6
2019/3/1 12:00	1.7		0.6
2019/3/8 12:00	1.7		0.5
2019/3/15 12:00	1.7		0.5
2019/3/22 12:00	1.7		0.5
2019/3/29 12:00	1.7		0.5
2019/4/5 12:00	1.7		0.5
2019/4/12 12:00	1.7		0.5
2019/4/19 12:00	1.7		0.5
2019/4/26 12:00	1.7		0.5
2019/5/3 12:00	1.7		0.5
2019/5/10 12:00	1.7		0.5
2019/5/17 12:00	1.7		0.5
2019/5/24 12:00	1.7		0.5
2019/5/31 12:00	1.7		0.5
2019/6/7 12:00	1.7		0.5
2019/6/14 12:00	1.7		0.5
2019/6/21 12:00	1.7		0.5
2019/6/28 12:00	1.7		0.4
2019/7/5 12:00	1.7		0.5
2019/7/12 12:00	1.7		0.5
2019/7/19 12:00	1.7		0.5
2019/7/26 12:00	1.7		0.5
2019/8/2 12:00	1.7		0.5
2019/8/9 12:00	1.7		0.5
2019/8/16 12:00	1.7		0.5
2019/8/23 12:00	1.8		0.6
2019/8/30 12:00	1.8		0.5
2019/9/6 12:00	1.8		0.6
2019/9/13 12:00	1.8		0.6
2019/9/20 12:00	1.8		0.6
2019/9/27 12:00	1.8		0.6
2019/10/4 12:00	1.8		0.6
2019/10/11 12:00	1.8		0.6
2019/10/18 12:00	1.8		0.6
2019/10/25 12:00	1.8		0.5
2019/11/1 12:00	1.8		0.5
2019/11/8 12:00	1.8		0.5
2019/11/15 12:00	1.8		0.6
2019/11/22 12:00	1.8		0.6
2019/11/29 12:00	1.8		0.5
2019/12/6 12:00	1.8		0.6
2019/12/13 12:00	1.9		0.6
2019/12/20 12:00	1.9		0.6
2019/12/27 12:00	1.9		0.6
2020/1/3 12:00	1.9		0.6
2020/1/10 12:00	1.9		0.6
2020/1/17 12:00	2.0		0.6
2020/1/24 12:00	2.0		0.6
2020/1/31 12:00	2.0		0.6
2020/2/7 12:00	2.0		0.6
2020/2/14 12:00	2.0		0.6
2020/2/21 12:00	2.0		0.6
2020/2/28 12:00	2.0		0.6
2020/3/6 12:00	2.0		0.6
2020/3/13 12:00	2.1		0.6
2020/3/20 12:00	2.1		0.6
2020/3/27 12:00	2.1		0.7
2020/4/3 12:00	-		-
2020/4/10 12:00	-		-
2020/4/17 12:00	-		-
2020/4/24 12:00	-		-
2020/5/1 12:00	-		-
2020/5/8 12:00	-		-
2020/5/15 12:00	-		-
2020/5/22 12:00	-		-
2020/5/29 12:00	-		-
2020/6/5 12:00	-		-
2020/6/12 12:00	-		-
2020/6/19 12:00	-		-
2020/6/26 12:00	-		-
2020/7/3 12:00	-		-
2020/7/10 12:00	-		-
2020/7/17 12:00	-		-
2020/7/24 12:00	-		-
2020/7/31 12:00	-		-
2020/8/7 12:00	-		-
2020/8/14 12:00	-		-
2020/8/18	2.2		0.8
2020/8/20	-		-
2020/8/21 12:00	-		-
2020/8/25 12:00	-		-
2021/2/17	-		-
2021/2/18	2.5		1.0
2021/2/19	-		-
2021/2/22	-		-
2021/2/25	-		-
2021/2/26	-		-

[決下量]	事業区域名				
	計測地点名	10E-1	10E-2	10E-3	10E-4
	決下量 (cm)	決下量 (cm)	決下量 (cm)	決下量 (cm)	10D-1(ホシノブ) 決下量 (cm)
計測日					
2017/11/25 12:00	0.0	0.0	0.0	0.0	0.0
2017/12/25 12:00	0.1	0.1	0.1	0.1	0.1
2018/1/5 12:00	0.1	0.1	0.2	0.2	0.2
2018/1/12 12:00	0.1	0.1	0.2	0.2	0.2
2018/1/19 12:00	0.1	0.1	0.3	0.3	0.2
2018/1/26 12:00	0.1	0.2	0.3	0.2	0.2
2018/2/2 12:00	0.1	0.2	0.3	0.3	0.2
2018/2/9 12:00	0.2	0.2	0.3	0.3	0.3
2018/2/16 12:00	0.2	0.2	0.3	0.3	0.3
2018/2/23 12:00	0.2	0.3	0.4	0.3	0.3
2018/3/2 12:00	0.2	0.3	0.4	0.3	0.3
2018/3/9 12:00	0.3	0.3	0.4	0.3	0.3
2018/3/16 12:00	0.2	0.3	0.4	0.3	0.3
2018/3/23 12:00	0.2	0.4	0.4	0.3	0.3
2018/3/30 12:00	0.2	0.5	0.4	0.4	0.3
2018/4/6 12:00	0.2	0.5	0.4	0.3	0.3
2018/4/13 12:00	0.2	0.5	0.4	0.4	0.4
2018/4/20 12:00	0.2	0.6	0.4	0.4	0.4
2018/4/27 12:00	0.2	0.6	0.4	0.4	0.4
2018/5/4 12:00	0.2	0.6	0.4	0.4	0.4
2018/5/11 12:00	0.3	0.6	0.4	0.4	0.5
2018/5/18 12:00	0.3	0.6	0.4	0.4	0.4
2018/5/25 12:00	0.3	0.6	0.4	0.4	0.5
2018/6/1 12:00	0.3	0.6	0.5	0.5	0.5
2018/6/8 12:00	0.3	0.6	0.5	0.5	0.5
2018/6/15 12:00	0.3	0.7	0.5	0.5	0.5
2018/6/22 12:00	0.3	0.7	0.5	0.5	0.5
2018/6/29 12:00	0.4	0.7	0.6	0.6	0.6
2018/7/6 12:00	0.4	0.7	0.6	0.6	0.6
2018/7/13 12:00	0.4	0.8	0.6	0.7	0.6
2018/7/20 12:00	0.4	0.8	0.7	0.7	0.6
2018/7/27 12:00	0.5	0.8	0.7	0.7	0.7
2018/8/3 12:00	0.5	0.8	0.7	0.8	0.7
2018/8/10 12:00	0.5	0.9	0.8	0.8	0.7
2018/8/17 12:00	0.6	0.8	0.8	0.8	0.7
2018/8/24 12:00	0.6	0.9	0.9	0.9	0.8
2018/8/31 12:00	0.6	0.9	0.9	0.9	0.8
2018/9/7 12:00	0.7	0.9	0.9	0.9	0.8
2018/9/14 12:00	0.7	0.9	1.0	1.0	0.8
2018/9/21 12:00	0.7	0.9	0.9	1.0	0.8
2018/9/28 12:00	0.7	0.9	0.9	1.0	0.8
2018/10/5 12:00	0.7	0.9	1.0	1.0	0.9
2018/10/12 12:00	0.7	0.9	0.9	1.0	0.9
2018/10/19 12:00	0.7	0.9	1.0	1.0	0.9
2018/10/26 12:00	0.7	0.9	1.0	1.0	0.9
2018/11/2 12:00	0.7	1.0	1.0	1.1	0.9
2018/11/9 12:00	0.8	1.0	1.0	1.1	0.9
2018/11/16 12:00	0.8	1.0	1.1	1.1	0.9
2018/11/23 12:00	0.8	1.0	1.0	1.1	0.9
2018/11/30 12:00	0.8	1.0	1.1	1.1	0.9
2018/12/7 12:00	0.8	1.0	1.1	1.1	0.9
2018/12/14 12:00	0.8	1.0	1.1	1.2	1.0
2018/12/21 12:00	0.8	1.0	1.2	1.2	1.0
2018/12/28 12:00	0.8	1.0	1.1	1.2	1.0
2019/1/4 12:00	0.8	1.0	1.2	1.2	1.0
2019/1/11 12:00	0.8	1.0	1.2	1.2	1.0
2019/1/18 12:00	0.8	1.0	1.2	1.3	1.0
2019/1/25 12:00	0.8	1.1	1.2	1.3	1.0
2019/2/1 12:00	0.9	1.1	1.2	1.3	1.0
2019/2/8 12:00	0.9	1.1	1.3	1.3	1.1
2019/2/15 12:00	0.9	1.1	1.3	1.4	1.1
2019/2/22 12:00	0.9	1.1	1.3	1.4	1.1
2019/3/1 12:00	0.9	1.1	1.4	1.4	1.1
2019/3/8 12:00	0.9	1.1	1.4	1.4	1.1
2019/3/15 12:00	0.9	1.1	1.4	1.4	1.1
2019/3/22 12:00	0.9	1.1	1.3	1.4	1.1
2019/3/29 12:00	1.0	1.1	1.4	1.4	1.1
2019/4/5 12:00	1.0	1.1	1.3	1.4	1.1
2019/4/12 12:00	1.0	1.1	1.4	1.5	1.1
2019/4/19 12:00	1.0	1.1	1.4	1.5	1.1
2019/4/26 12:00	1.0	1.2	1.4	1.5	1.1
2019/5/3 12:00	1.0	1.2	1.4	1.5	1.2
2019/5/10 12:00	1.0	1.2	1.4	1.6	1.2
2019/5/17 12:00	1.1	1.2	1.4	1.6	1.2
2019/5/24 12:00	1.1	1.2	1.4	1.6	1.2
2019/5/31 12:00	1.1	1.2	1.4	1.6	1.2
2019/6/7 12:00	1.1	1.2	1.5	1.6	1.2
2019/6/14 12:00	1.1	1.2	1.5	1.7	1.3
2019/6/21 12:00	1.1	1.2	1.5	1.7	1.3
2019/6/28 12:00	1.1	1.2	1.5	1.7	1.3
2019/7/5 12:00	1.1	1.2	1.5	1.7	1.3
2019/7/12 12:00	1.2	1.3	1.5	1.7	1.3
2019/7/19 12:00	1.2	1.3	1.5	1.7	1.3
2019/7/26 12:00	1.2	1.3	1.5	1.7	1.3
2019/8/2 12:00	1.2	1.3	1.5	1.8	1.3
2019/8/9 12:00	1.2	1.3	1.6	1.8	1.3
2019/8/16 12:00	1.2	1.3	1.6	1.8	1.4
2019/8/23 12:00	1.2	1.3	1.6	1.8	1.4
2019/8/30 12:00	1.3	1.3	1.6	1.8	1.4
2019/9/6 12:00	1.3	1.3	1.7	1.9	1.4
2019/9/13 12:00	1.3	1.3	1.6	1.9	1.4
2019/9/20 12:00	1.3	1.3	1.6	1.9	1.4
2019/9/27 12:00	1.3	1.4	1.7	1.9	1.4
2019/10/4 12:00	1.3	1.3	1.6	1.9	1.4
2019/10/11 12:00	1.3	1.4	1.7	1.9	1.4
2019/10/18 12:00	1.3	1.3	1.6	1.9	1.4
2019/10/25 12:00	1.3	1.3	1.6	1.9	1.4
2019/11/1 12:00	1.3	1.3	1.6	1.9	1.4
2019/11/8 12:00	1.3	1.3	1.6	1.9	1.4
2019/11/15 12:00	1.3	1.3	1.6	1.9	1.5
2019/11/22 12:00	1.3	1.4	1.7	1.9	1.5
2019/11/29 12:00	1.3	1.3	1.7	1.9	1.5
2019/12/6 12:00	1.3	1.3	1.7	1.9	1.5
2019/12/13 12:00	1.3	1.3	1.7	1.9	1.5
2019/12/20 12:00	1.3	1.3	1.7	1.9	1.5
2019/12/27 12:00	1.3	1.3	1.6	1.9	1.5
2020/1/3 12:00	1.3	1.3	1.7	2.0	1.5
2020/1/10 12:00	1.3	1.3	1.7	2.0	1.5
2020/1/17 12:00	1.3	1.4	1.7	2.0	1.5
2020/1/24 12:00	1.3	1.4	1.7	2.0	1.5
2020/1/31 12:00	1.3	1.4	1.7	2.0	1.5
2020/2/7 12:00	1.3	1.4	1.7	2.0	1.5
2020/2/14 12:00	1.3	1.4	1.7	2.0	1.5
2020/2/21 12:00	1.3	1.4	1.8	2.1	1.5
2020/2/28 12:00	1.3	1.4	1.8	2.1	1.5
2020/3/6 12:00	1.3	1.4	1.8	2.1	1.5
2020/3/13 12:00	1.3	1.4	1.8	2.1	1.5
2020/3/20 12:00	1.3	1.4	1.8	2.1	1.5
2020/3/27 12:00	1.4	1.4	1.8	2.1	1.5
2020/4/3 12:00	1.4	1.5	1.8	2.1	1.6
2020/4/10 12:00	1.4	1.4	1.8	2.1	1.6
2020/4/17 12:00	1.4	1.5	1.8	2.1	1.6
2020/4/24 12:00	1.4	1.4	1.8	2.1	1.6
2020/5/1 12:00	1.4	1.5	1.8	2.1	1.6
2020/5/8 12:00	1.4	1.4	1.8	2.2	1.6
2020/5/15 12:00	1.4	1.4	1.8	2.2	1.6
2020/5/22 12:00	1.5	1.5	1.9	2.2	1.6
2020/5/29 12:00	1.5	1.5	1.9	2.2	1.6
2020/6/5 12:00	1.5	1.5	1.9	2.2	1.6
2020/6/12 12:00	1.5	1.5	2.0	2.3	1.7
2020/6/19 12:00	1.5	1.5	2.0	2.3	1.7
2020/6/26 12:00	1.6	1.5	2.0	2.3	1.7
2020/7/3 12:00	1.6	1.5	2.0	2.3	1.7
2020/7/10 12:00	1.6	1.5	2.0	2.3	1.7
2020/7/17 12:00	1.6	1.5	2.0	2.3	1.7
2020/7/24 12:00	1.6	1.5	2.0	2.3	1.7
2020/7/31 12:00	1.6	1.5	2.0	2.3	1.7
2020/8/7 12:00	1.6	1.5	2.0	2.3	1.7
2020/8/14 12:00	1.6	1.5	2.0	2.3	1.7
2020/8/18	-	-	-	-	-
2020/8/20	-	-	-	-	-
2020/8/21 12:00	1.6	1.5	2.0	2.4	1.7
2020/8/25 12:00	1.6	1.5	2.0	2.4	1.7
2021/2/11	-	-	-	-	-
2021/2/18	-	-	-	-	-
2021/2/19	-	-	-	-	-
2021/2/22	1.5	1.6	2.1	2.2	-
2021/2/25	-	-	-	-	-
2021/2/26	-	-	-	-	-

[地下水位]		
事業区域名	11丁目(民地部)	
計測地名	11F-1	
計測地点地高(T.P.m)	8.36	
計測日	地下水位(T.P.m)	地下水位(0m)
2017/1/25 12.00	7.41	-0.955
2017/12/25 12.00	6.66	-1.499
2018/1/9 12.00	6.79	-1.574
2018/1/12 12.00	6.79	-1.607
2018/1/19 12.00	6.79	-1.574
2018/1/26 12.00	6.65	-1.610
2018/2/2 12.00	6.65	-1.607
2018/2/9 12.00	6.69	-1.475
2018/2/16 12.00	6.93	-1.432
2018/2/23 12.00	6.94	-1.421
2018/3/2 12.00	7.02	-1.339
2018/3/9 12.00	7.44	-0.919
2018/3/16 12.00	7.41	-0.948
2018/3/23 12.00	7.57	-0.786
2018/3/30 12.00	7.28	-1.082
2018/4/6 12.00	7.37	-0.987
2018/4/13 12.00	7.28	-1.086
2018/4/20 12.00	7.22	-1.137
2018/4/27 12.00	7.23	-1.131
2018/5/4 12.00	7.20	-1.160
2018/5/11 12.00	7.19	-1.170
2018/5/18 12.00	7.17	-1.185
2018/5/25 12.00	7.28	-1.080
2018/6/1 12.00	7.07	-1.291
2018/6/8 12.00	7.06	-1.277
2018/6/15 12.00	6.89	-1.469
2018/6/22 12.00	6.84	-1.524
2018/6/29 12.00	6.76	-1.597
2018/7/6 12.00	6.74	-1.620
2018/7/13 12.00	6.77	-1.586
2018/7/20 12.00	6.74	-1.624
2018/7/27 12.00	6.73	-1.628
2018/8/3 12.00	6.67	-1.692
2018/8/10 12.00	6.64	-1.721
2018/8/17 12.00	6.58	-1.782
2018/8/24 12.00	6.57	-1.794
2018/8/31 12.00	6.55	-1.809
2018/9/7 12.00	6.61	-1.749
2018/9/14 12.00	6.60	-1.761
2018/9/21 12.00	6.70	-1.657
2018/9/28 12.00	6.77	-1.591
2018/10/5 12.00	6.66	-1.703
2018/10/12 12.00	6.63	-1.729
2018/10/19 12.00	6.59	-1.773
2018/10/26 12.00	6.55	-1.807
2018/11/2 12.00	6.60	-1.655
2018/11/9 12.00	6.57	-1.793
2018/11/16 12.00	6.50	-1.856
2018/11/23 12.00	6.59	-1.661
2018/11/30 12.00	6.47	-1.894
2018/12/7 12.00	6.46	-1.898
2018/12/14 12.00	6.42	-1.944
2018/12/21 12.00	6.36	-1.989
2018/12/28 12.00	6.39	-1.974
2019/1/4 12.00	6.33	-2.031
2019/1/11 12.00	6.49	-1.644
2019/1/18 12.00	6.46	-1.645
2019/1/25 12.00	6.41	-1.690
2019/2/1 12.00	6.41	-1.648
2019/2/8 12.00	6.41	-1.653
2019/2/15 12.00	6.41	-1.654
2019/2/22 12.00	6.41	-1.655
2019/3/1 12.00	6.41	-1.655
2019/3/8 12.00	6.41	-1.652
2019/3/15 12.00	6.41	-1.653
2019/3/22 12.00	6.46	-1.697
2019/3/29 12.00	6.35	-2.013
2019/4/5 12.00	6.41	-1.562
2019/4/12 12.00	6.39	-1.573
2019/4/19 12.00	6.38	-1.575
2019/4/26 12.00	6.42	-1.644
2019/5/3 12.00	6.43	-1.629
2019/5/10 12.00	6.41	-1.651
2019/5/17 12.00	6.37	-1.686
2019/5/24 12.00	6.46	-1.697
2019/5/31 12.00	6.42	-1.643
2019/6/7 12.00	6.41	-1.652
2019/6/14 12.00	6.46	-1.661
2019/6/21 12.00	6.52	-1.642
2019/6/28 12.00	6.62	-1.736
2019/7/5 12.00	6.63	-1.726
2019/7/12 12.00	6.61	-1.751
2019/7/19 12.00	6.63	-1.734
2019/7/26 12.00	6.53	-1.831
2019/8/2 12.00	6.52	-1.839
2019/8/9 12.00	6.50	-1.858
2019/8/16 12.00	6.59	-1.773
2019/8/23 12.00	6.54	-1.817
2019/8/30 12.00	6.53	-1.830
2019/9/6 12.00	6.51	-1.853
2019/9/13 12.00	6.58	-1.780
2019/9/20 12.00	6.49	-1.856
2019/9/27 12.00	6.46	-1.886
2019/10/4 12.00	6.55	-1.809
2019/10/11 12.00	6.49	-1.871
2019/10/18 12.00	6.72	-1.642
2019/10/25 12.00	6.75	-1.611
2019/11/1 12.00	6.65	-1.706
2019/11/8 12.00	6.55	-1.806
2019/11/15 12.00	6.51	-1.846
2019/11/22 12.00	6.42	-1.943
2019/11/29 12.00	6.56	-1.799
2019/12/6 12.00	6.46	-1.899
2019/12/13 12.00	6.46	-1.902
2019/12/20 12.00	6.49	-1.874
2019/12/27 12.00	6.57	-1.786
2020/1/3 12.00	6.46	-1.901
2020/1/10 12.00	6.42	-1.938
2020/1/17 12.00	6.40	-1.960
2020/1/24 12.00	6.39	-1.969
2020/1/31 12.00	6.55	-1.809
2020/2/7 12.00	6.39	-1.971
2020/2/14 12.00	6.44	-1.925
2020/2/21 12.00	6.37	-1.994
2020/2/28 12.00	6.37	-1.993
2020/3/6 12.00	6.39	-1.974
2020/3/13 12.00	6.36	-1.976
2020/3/20 12.00	6.51	-1.854
2020/3/27 12.00	6.39	-1.970
2020/4/3 12.00	6.55	-1.809
2020/4/10 12.00	6.53	-1.827
2020/4/17 12.00	6.53	-1.828
2020/4/24 12.00	6.60	-1.760
2020/5/1 12.00	6.53	-1.828
2020/5/8 12.00	6.57	-1.791
2020/5/15 12.00	6.49	-1.874
2020/5/22 12.00	6.56	-1.799
2020/5/29 12.00	6.60	-1.759
2020/6/5 12.00	6.52	-1.838
2020/6/12 12.00	6.56	-1.777
2020/6/19 12.00	6.65	-1.709
2020/6/26 12.00	6.66	-1.703
2020/7/3 12.00	6.63	-1.727
2020/7/10 12.00	6.79	-1.571
2020/7/17 12.00	6.65	-1.711
2020/7/24 12.00	6.68	-1.679
2020/7/31 12.00	6.65	-1.706
2020/8/7 12.00	6.60	-1.764
2020/8/14 12.00	6.55	-1.815
2020/8/18	-	-
2020/8/20	-	-
2020/8/21 12.00	6.46	-1.880
2020/8/28 12.00	6.51	-1.848
2021/2/17	6.56	-1.800
2021/2/18	-	-
2021/2/19	-	-
2021/2/22	-	-
2021/2/25	-	-
2021/2/26	-	-
1段階目水位	6.96	-1.40
2段階目水位	6.60	-1.57
3段階目水位	6.63	-1.73

[地下水位]		汀目(遠藤郡)							
事業区域名	TIE1		TIE2		TIE3		TIE4		
計測地点地高(T.P.m)	8.42	8.44		8.73		8.71			
計測日	地下水位(T.P.m)	地下水位(g.l.m)	地下水位(T.P.m)	地下水位(g.l.m)	地下水位(T.P.m)	地下水位(g.l.m)	地下水位(T.P.m)	地下水位(g.l.m)	
2017/11/25 12.00	7.40	-1.017	7.39	-1.054	7.46	-1.273	7.36	-1.346	
2017/12/25 12.00	6.71	-1.711	6.71	-1.733	6.76	-1.967	6.67	-2.036	
2018/1/9 12.00	6.78	-1.681	6.78	-1.699	6.81	-1.825	6.71	-1.885	
2018/1/12 12.00	6.78	-1.656	6.77	-1.674	6.82	-1.911	6.73	-1.981	
2018/1/19 12.00	6.78	-1.636	6.79	-1.655	6.84	-1.892	6.79	-1.964	
2018/1/26 12.00	6.85	-1.573	6.85	-1.589	6.90	-1.830	6.81	-1.903	
2018/2/2 12.00	6.95	-1.474	6.95	-1.451	6.94	-1.793	6.91	-1.668	
2018/2/9 12.00	6.92	-1.499	6.93	-1.514	6.98	-1.754	6.88	-1.830	
2018/2/16 12.00	6.94	-1.480	6.94	-1.498	6.98	-1.738	6.90	-1.812	
2018/2/23 12.00	6.95	-1.474	6.95	-1.490	7.00	-1.730	6.91	-1.803	
2018/3/2 12.00	7.04	-1.383	7.05	-1.392	7.09	-1.641	7.00	-1.712	
2018/3/9 12.00	7.38	-1.042	7.38	-1.056	7.43	-1.301	7.33	-1.378	
2018/3/16 12.00	7.42	-1.005	7.42	-1.022	7.47	-1.280	7.38	-1.327	
2018/3/23 12.00	7.59	-0.831	7.59	-0.848	7.65	-1.084	7.56	-1.161	
2018/3/30 12.00	7.27	-1.150	7.27	-1.171	7.32	-1.409	7.24	-1.473	
2018/4/6 12.00	7.33	-1.090	7.32	-1.115	7.38	-1.350	7.30	-1.412	
2018/4/13 12.00	7.24	-1.179	7.23	-1.206	7.29	-1.459	7.21	-1.500	
2018/4/20 12.00	7.19	-1.228	7.19	-1.251	7.24	-1.488	7.18	-1.547	
2018/4/27 12.00	7.15	-1.268	7.15	-1.293	7.20	-1.534	7.13	-1.584	
2018/5/4 12.00	7.13	-1.293	7.12	-1.317	7.17	-1.581	7.10	-1.607	
2018/5/11 12.00	7.11	-1.314	7.11	-1.333	7.15	-1.633	7.09	-1.624	
2018/5/18 12.00	7.07	-1.352	7.07	-1.370	7.11	-1.621	7.05	-1.662	
2018/5/25 12.00	7.20	-1.216	7.20	-1.235	7.24	-1.491	7.19	-1.525	
2018/6/1 12.00	6.93	-1.465	6.94	-1.500	6.97	-1.761	6.92	-1.781	
2018/6/8 12.00	6.93	-1.490	6.94	-1.503	6.96	-1.788	6.92	-1.792	
2018/6/15 12.00	6.55	-1.867	6.56	-1.875	6.59	-1.145	6.54	-1.711	
2018/6/22 12.00	6.52	-1.896	6.54	-1.903	6.56	-1.715	6.51	-2.200	
2018/6/29 12.00	6.48	-1.878	6.53	-1.868	6.57	-2.162	6.51	-2.182	
2018/7/6 12.00	6.48	-1.944	6.51	-1.929	6.53	-2.201	6.50	-2.210	
2018/7/13 12.00	6.47	-1.949	6.50	-1.936	6.52	-2.212	6.49	-2.221	
2018/7/20 12.00	6.53	-1.891	6.54	-1.898	6.54	-2.189	6.53	-2.184	
2018/7/27 12.00	6.51	-1.915	6.51	-1.923	6.51	-2.221	6.51	-2.229	
2018/8/3 12.00	6.28	-2.142	6.31	-2.126	6.32	-2.410	6.30	-2.409	
2018/8/10 12.00	6.27	-2.148	6.29	-2.150	6.28	-2.446	6.28	-2.425	
2018/8/17 12.00	6.28	-2.156	6.28	-2.165	6.28	-2.457	6.27	-2.432	
2018/8/24 12.00	6.28	-2.165	6.28	-2.178	6.28	-2.466	6.27	-2.440	
2018/8/31 12.00	6.23	-2.185	6.24	-2.198	6.24	-2.490	6.25	-2.455	
2018/9/7 12.00	6.27	-2.154	6.28	-2.178	6.28	-2.471	6.28	-2.433	
2018/9/14 12.00	6.28	-2.143	6.27	-2.151	6.28	-2.468	6.28	-2.427	
2018/9/21 12.00	6.32	-2.098	6.32	-2.123	6.31	-2.417	6.32	-2.388	
2018/9/28 12.00	6.36	-2.062	6.35	-2.067	6.36	-2.373	6.36	-2.349	
2018/10/5 12.00	6.33	-2.081	6.33	-2.115	6.33	-2.406	6.33	-2.378	
2018/10/12 12.00	6.32	-2.100	6.30	-2.140	6.30	-2.433	6.32	-2.392	
2018/10/19 12.00	6.30	-2.121	6.28	-2.156	6.28	-2.446	6.30	-2.408	
2018/10/26 12.00	6.30	-2.121	6.27	-2.187	6.28	-2.444	6.30	-2.414	
2018/11/2 12.00	6.31	-2.122	6.29	-2.179	6.29	-2.441	6.29	-2.421	
2018/11/9 12.00	6.31	-2.105	6.28	-2.182	6.29	-2.444	6.29	-2.416	
2018/11/16 12.00	6.30	-2.124	6.25	-2.189	6.29	-2.444	6.28	-2.427	
2018/11/23 12.00	6.30	-2.122	6.28	-2.194	6.28	-2.449	6.29	-2.434	
2018/11/30 12.00	6.29	-2.130	6.24	-2.201	6.23	-2.453	6.21	-2.443	
2018/12/7 12.00	6.29	-2.133	6.24	-2.201	6.27	-2.455	6.28	-2.447	
2018/12/14 12.00	6.30	-2.122	6.25	-2.186	6.27	-2.462	6.27	-2.438	
2018/12/21 12.00	6.28	-2.134	6.24	-2.187	6.27	-2.457	6.27	-2.439	
2018/12/28 12.00	6.28	-2.137	6.24	-2.200	6.27	-2.464	6.28	-2.454	
2019/1/4 12.00	6.28	-2.142	6.24	-2.200	6.26	-2.470	6.25	-2.458	
2019/1/11 12.00	6.27	-2.146	6.24	-2.201	6.25	-2.481	6.24	-2.464	
2019/1/18 12.00	6.27	-2.151	6.24	-2.203	6.24	-2.488	6.24	-2.469	
2019/1/25 12.00	6.26	-2.155	6.23	-2.207	6.23	-2.496	6.24	-2.475	
2019/2/1 12.00	6.28	-2.138	6.25	-2.190	6.23	-2.496	6.24	-2.488	
2019/2/8 12.00	6.28	-2.160	6.25	-2.211	6.25	-2.509	6.25	-2.492	
2019/2/15 12.00	6.26	-2.157	6.23	-2.212	6.22	-2.509	6.23	-2.483	
2019/2/22 12.00	6.26	-2.165	6.22	-2.218	6.21	-2.521	6.22	-2.488	
2019/3/1 12.00	6.29	-2.125	6.28	-2.178	6.23	-2.488	6.25	-2.455	
2019/3/8 12.00	6.30	-2.122	6.27	-2.170	6.24	-2.480	6.28	-2.446	
2019/3/15 12.00	6.31	-2.114	6.28	-2.158	6.25	-2.482	6.27	-2.436	
2019/3/22 12.00	6.30	-2.121	6.27	-2.166	6.24	-2.491	6.27	-2.441	
2019/3/29 12.00	6.29	-2.134	6.25	-2.169	6.22	-2.509	6.25	-2.455	
2019/4/5 12.00	6.29	-2.133	6.26	-2.184	6.22	-2.509	6.25	-2.457	
2019/4/12 12.00	6.29	-2.126	6.26	-2.179	6.23	-2.504	6.26	-2.453	
2019/4/19 12.00	6.29	-2.133	6.24	-2.203	6.21	-2.520	6.24	-2.473	
2019/4/26 12.00	6.30	-2.123	6.24	-2.201	6.21	-2.519	6.24	-2.468	
2019/5/3 12.00	6.31	-2.107	6.26	-2.184	6.24	-2.490	6.26	-2.454	
2019/5/10 12.00	6.31	-2.107	6.23	-2.209	6.24	-2.491	6.23	-2.476	
2019/5/17 12.00	6.29	-2.132	6.23	-2.220	6.23	-2.520	6.23	-2.483	
2019/5/24 12.00	6.28	-2.136	6.24	-2.200	6.21	-2.522	6.25	-2.482	
2019/5/31 12.00	6.27	-2.147	6.21	-2.231	6.19	-2.544	6.23	-2.484	
2019/6/7 12.00	6.26	-2.160	6.20	-2.241	6.17	-2.559	6.22	-2.487	
2019/6/14 12.00	6.28	-2.126	6.20	-2.210	6.20	-2.527	6.21	-2.480	
2019/6/21 12.00	6.32	-2.101	6.25	-2.187	6.22	-2.506	6.28	-2.434	
2019/6/28 12.00	6.32	-2.100	6.26	-2.177	6.23	-2.498	6.29	-2.423	
2019/7/5 12.00	6.34	-2.065	6.28	-2.166	6.27	-2.484	6.31	-2.399	
2019/7/12 12.00	6.33	-2.094	6.28	-2.160	6.25	-2.484	6.31	-2.403	
2019/7/19 12.00	6.37	-2.050	6.32	-2.119	6.29	-2.436	6.35	-2.360	
2019/7/26 12.00	6.33	-2.090	6.28	-2.157	6.26	-2.468	6.31	-2.399	
2019/8/2 12.00	6.32	-2.086	6.28	-2.163	6.25	-2.481	6.31	-2.396	
2019/8/9 12.00	6.32	-2.101	6.28	-2.178	6.24	-2.493	6.31	-2.405	
2019/8/16 12.00	6.31	-2.114	6.25	-2.193	6.23	-2.505	6.30	-2.406	
2019/8/23 12.00	6.35	-2.069	6.28	-2.198	6.27	-2.516	6.30	-2.408	
2019/8/30 12.00	6.30	-2.122	6.24	-2.201	6.22	-2.509	6.30	-2.413	
2019/9/6 12.00	6.30	-2.124	6.23	-2.214	6.21	-2.524	6.29	-2.418	
2019/9/13 12.00	6.29	-2.132	6.22	-2.221	6.20	-2.528	6.30	-2.414	
2019/9/20 12.00	6.29	-2.134	6.23	-2.234	6.19	-2.538	6.30	-2.414	
2019/9/27 12.00	6.28	-2.136	6.20	-2.236	6.18	-2.545	6.29	-2.417	
2019/10/4 12.00	6.28	-2.136	6.20	-2.239	6.18	-2.550	6.29	-2.421	
2019/10/11 12.00	6.29	-2.129	6.20	-2.243	6.20	-2.535	6.29	-2.419	
2019/10/18 12.00	6.31	-2.113	6.23	-2.214	6.22	-2.508	6.31	-2.396	
2019/10/25 12.00	6.34	-2.084	6.28	-2.161	6.26	-2.468	6.35	-2.358	
2019/11/1 12.00	6.31	-2.112	6.23	-2.206	6.22	-2.507	6.33	-2.380	
2019/11/8 12.00	6.32	-2.097	6.23	-2.211	6.22	-2.507	6.33	-2.379	
2019/11/15 12.00	6.34	-2.081	6.24	-2.204	6.24	-2.492	6.35	-2.360	
2019/11/22 12.00	6.33	-2.094	6.22	-2.218	6.23	-2.503	6.33	-2.382	
2019/11/29 12.00	6.35	-2.067	6.24	-2.199	6.25	-2.481	6.36	-2.350	
2019/12/6 12.00	6.34	-2.079	6.24	-2.202	6.25	-2.483	6.34	-2.372	
2019/12/13 12.00	6.33	-2.095	6.23	-2.215	6.22	-2.509	6.33	-2.384	
2019/12/20 12.00	6.33	-2.088	6.23	-2.205	6.24	-2.489	6.33	-2.378	
2019/12/27 12.00	6.32	-2.090	6.23	-2.206	6.23	-2.501	6.30	-2.406	
2020/1/3 12.00	6.32	-2.097	6.18	-2.265	6.22	-2.509	6.29	-2.417	
2020/1/10 12.00	6.33	-2.086	6.17	-2.269	6.23	-2.502	6.30	-2.412	
2020/1/17 12.00	6.32	-2.098	6.17	-2.270	6.22	-2.509	6.29	-2.420	
2020/1/24 12.00	6.31	-2.107	6.16	-2.278	6.22	-2.511	6.29	-2.423	
2020/1/31 12.00	6.39	-2.028	6.22	-2.216	6.31	-2.425	6.34	-2.388	
2020/2/7 12.00	6.37	-2.046	6.20	-2.236	6.27	-2.462	6.30	-2.411	
2020/2/14 12.00	6.36	-2.061	6.17	-2.265	6.25	-2.481	6.31	-2.396	
2020/2/21 12.00	6.35	-2.069	6.17	-2.271	6.24	-2.491	6.31	-2.401	
2020/2/28 12.00	6.34	-2.079	6.16	-2.279	6.23	-2.503	6.30	-2.413	
2020/3/6 12.00	6.33	-2.088	6.15	-2.288	6.22	-2.509	6.29	-2.417	
2020/3/13 12.00	6.34	-2.075	6.16	-2.280	6.24	-2.483	6.30	-2.406	
2020/3/20 12.00	6.35	-2.071	6.16	-2.280	6.25	-2.476	6.31	-2.395	
2020/3/27 12.00	6.32	-2.096	6.15	-2.293	6.22	-2.506	6.30	-2.413	
2020/4/3 12.00	6.44	-1.880	6.22	-2.11					

[決下量]	
事業区域名	11丁目
計測地点名	11F
計測日	決下量 (cm)
2017/1/25 12:00	0.0
2017/1/25 12:00	0.2
2018/1/5 12:00	0.3
2018/1/12 12:00	0.3
2018/1/19 12:00	0.3
2018/1/26 12:00	0.3
2018/2/2 12:00	0.4
2018/2/9 12:00	0.4
2018/2/16 12:00	0.4
2018/2/23 12:00	0.4
2018/3/2 12:00	0.4
2018/3/9 12:00	0.4
2018/3/16 12:00	0.4
2018/3/23 12:00	0.4
2018/3/30 12:00	0.4
2018/4/6 12:00	0.4
2018/4/13 12:00	0.4
2018/4/20 12:00	0.4
2018/4/27 12:00	0.4
2018/5/4 12:00	0.4
2018/5/11 12:00	0.4
2018/5/18 12:00	0.4
2018/5/25 12:00	0.4
2018/6/1 12:00	0.5
2018/6/8 12:00	0.5
2018/6/15 12:00	0.5
2018/6/22 12:00	0.5
2018/6/29 12:00	0.6
2018/7/6 12:00	0.6
2018/7/13 12:00	0.6
2018/7/20 12:00	0.7
2018/7/27 12:00	0.7
2018/8/3 12:00	0.7
2018/8/10 12:00	0.8
2018/8/17 12:00	0.8
2018/8/24 12:00	0.9
2018/8/31 12:00	0.9
2018/9/7 12:00	0.9
2018/9/14 12:00	0.9
2018/9/21 12:00	1.0
2018/9/28 12:00	1.0
2018/10/5 12:00	1.0
2018/10/12 12:00	1.0
2018/10/19 12:00	1.0
2018/10/26 12:00	1.0
2018/11/2 12:00	1.1
2018/11/9 12:00	1.1
2018/11/16 12:00	1.1
2018/11/23 12:00	1.1
2018/11/30 12:00	1.1
2018/12/7 12:00	1.2
2018/12/14 12:00	1.2
2018/12/21 12:00	1.2
2018/12/28 12:00	1.2
2019/1/4 12:00	1.3
2019/1/11 12:00	1.3
2019/1/18 12:00	1.3
2019/1/25 12:00	1.3
2019/2/1 12:00	1.3
2019/2/8 12:00	1.4
2019/2/15 12:00	1.4
2019/2/22 12:00	1.4
2019/3/1 12:00	1.5
2019/3/8 12:00	1.5
2019/3/15 12:00	1.5
2019/3/22 12:00	1.5
2019/3/29 12:00	1.5
2019/4/5 12:00	1.5
2019/4/12 12:00	1.5
2019/4/19 12:00	1.5
2019/4/26 12:00	1.6
2019/5/3 12:00	1.6
2019/5/10 12:00	1.6
2019/5/17 12:00	1.6
2019/5/24 12:00	1.6
2019/5/31 12:00	1.6
2019/6/7 12:00	1.7
2019/6/14 12:00	1.7
2019/6/21 12:00	1.7
2019/6/28 12:00	1.7
2019/7/5 12:00	1.7
2019/7/12 12:00	1.7
2019/7/19 12:00	1.7
2019/7/26 12:00	1.7
2019/8/2 12:00	1.7
2019/8/9 12:00	1.7
2019/8/16 12:00	1.7
2019/8/23 12:00	1.8
2019/8/30 12:00	1.8
2019/9/6 12:00	1.8
2019/9/13 12:00	1.8
2019/9/20 12:00	1.8
2019/9/27 12:00	1.9
2019/10/4 12:00	1.9
2019/10/11 12:00	1.9
2019/10/18 12:00	1.8
2019/10/25 12:00	1.8
2019/11/1 12:00	1.8
2019/11/8 12:00	1.8
2019/11/15 12:00	1.9
2019/11/22 12:00	1.9
2019/11/29 12:00	1.9
2019/12/6 12:00	1.9
2019/12/13 12:00	1.9
2019/12/20 12:00	1.9
2019/12/27 12:00	1.9
2020/1/3 12:00	2.0
2020/1/10 12:00	2.0
2020/1/17 12:00	2.0
2020/1/24 12:00	2.0
2020/1/31 12:00	2.0
2020/2/7 12:00	2.1
2020/2/14 12:00	2.1
2020/2/21 12:00	2.1
2020/2/28 12:00	2.1
2020/3/6 12:00	2.1
2020/3/13 12:00	2.1
2020/3/20 12:00	2.1
2020/3/27 12:00	2.1
2020/4/3 12:00	2.1
2020/4/10 12:00	2.1
2020/4/17 12:00	2.2
2020/4/24 12:00	2.1
2020/5/1 12:00	2.2
2020/5/8 12:00	2.2
2020/5/15 12:00	2.2
2020/5/22 12:00	2.2
2020/5/29 12:00	2.2
2020/6/5 12:00	2.2
2020/6/12 12:00	2.2
2020/6/19 12:00	2.2
2020/6/26 12:00	2.2
2020/7/3 12:00	2.2
2020/7/10 12:00	2.2
2020/7/17 12:00	2.2
2020/7/24 12:00	2.2
2020/7/31 12:00	2.2
2020/8/7 12:00	2.2
2020/8/14 12:00	2.3
2020/8/18	-
2020/8/20	-
2020/8/21 12:00	2.3
2020/8/23 12:00	2.4
2021/2/11	2.6
2021/2/18	-
2021/2/19	-
2021/2/22	-
2021/2/25	-
2021/2/26	-

[決下量]	事業区域名				
	計測地点名	11丁目(道路部)			
		11E-1 決下量 (cm)	11E-2 決下量 (cm)	11E-3 決下量 (cm)	11E-4 決下量 (cm)
計測日					
2017/11/25 12:00	0.0	0.0	0.0	0.0	0.0
2017/12/25 12:00	0.1	0.1	0.1	0.1	0.0
2018/1/5 12:00	0.2	0.1	0.1	0.1	0.1
2018/1/12 12:00	0.2	0.2	0.1	0.2	0.1
2018/1/19 12:00	0.2	0.2	0.2	0.2	0.1
2018/1/26 12:00	0.2	0.2	0.2	0.2	0.1
2018/2/2 12:00	0.2	0.3	0.2	0.2	0.1
2018/2/9 12:00	0.3	0.3	0.2	0.3	0.2
2018/2/16 12:00	0.3	0.3	0.2	0.3	0.2
2018/2/23 12:00	0.3	0.3	0.2	0.3	0.2
2018/3/2 12:00	0.3	0.3	0.2	0.3	0.2
2018/3/9 12:00	0.3	0.4	0.2	0.3	0.2
2018/3/16 12:00	0.3	0.3	0.2	0.3	0.2
2018/3/23 12:00	0.3	0.3	0.2	0.3	0.2
2018/3/30 12:00	0.3	0.3	0.2	0.3	0.3
2018/4/6 12:00	0.3	0.3	0.2	0.3	0.2
2018/4/13 12:00	0.3	0.3	0.2	0.3	0.3
2018/4/20 12:00	0.3	0.3	0.2	0.3	0.3
2018/4/27 12:00	0.3	0.3	0.2	0.3	0.3
2018/5/4 12:00	0.3	0.3	0.2	0.3	0.3
2018/5/11 12:00	0.3	0.4	0.2	0.3	0.3
2018/5/18 12:00	0.3	0.4	0.2	0.3	0.3
2018/5/25 12:00	0.3	0.4	0.2	0.3	0.4
2018/6/1 12:00	0.3	0.4	0.3	0.4	0.3
2018/6/8 12:00	0.3	0.4	0.3	0.4	0.4
2018/6/15 12:00	0.4	0.4	0.3	0.4	0.4
2018/6/22 12:00	0.4	0.5	0.3	0.5	0.4
2018/6/29 12:00	0.4	0.5	0.3	0.5	0.4
2018/7/6 12:00	0.5	0.6	0.3	0.6	0.4
2018/7/13 12:00	0.5	0.6	0.4	0.6	0.4
2018/7/20 12:00	0.5	0.6	0.4	0.6	0.4
2018/7/27 12:00	0.5	0.6	0.4	0.6	0.5
2018/8/3 12:00	0.5	0.7	0.4	0.7	0.5
2018/8/10 12:00	0.5	0.7	0.4	0.7	0.5
2018/8/17 12:00	0.6	0.8	0.5	0.7	0.5
2018/8/24 12:00	0.6	0.8	0.5	0.8	0.6
2018/8/31 12:00	0.6	0.8	0.5	0.8	0.6
2018/9/7 12:00	0.6	0.9	0.5	0.8	0.6
2018/9/14 12:00	0.7	0.9	0.6	0.8	0.7
2018/9/21 12:00	0.7	0.9	0.6	0.8	0.7
2018/9/28 12:00	0.7	0.9	0.6	0.8	0.7
2018/10/5 12:00	0.7	1.0	0.6	0.8	0.7
2018/10/12 12:00	0.7	1.0	0.6	0.8	0.7
2018/10/19 12:00	0.7	1.0	0.6	0.8	0.7
2018/10/26 12:00	0.7	1.0	0.6	0.9	0.7
2018/11/2 12:00	0.7	1.0	0.6	0.9	0.7
2018/11/9 12:00	0.8	1.0	0.6	0.9	0.7
2018/11/16 12:00	0.8	1.0	0.6	0.9	0.7
2018/11/23 12:00	0.8	1.0	0.6	0.9	0.7
2018/11/30 12:00	0.8	1.0	0.7	0.9	0.8
2018/12/7 12:00	0.8	1.1	0.8	0.9	0.8
2018/12/14 12:00	0.8	1.1	0.7	0.9	0.8
2018/12/21 12:00	0.9	1.1	0.7	1.0	0.8
2018/12/28 12:00	0.9	1.1	0.7	0.9	0.8
2019/1/4 12:00	0.9	1.1	0.7	1.0	0.8
2019/1/11 12:00	0.9	1.1	0.7	1.0	0.8
2019/1/18 12:00	0.9	1.2	0.7	1.0	0.8
2019/1/25 12:00	0.9	1.2	0.7	1.0	0.8
2019/2/1 12:00	0.9	1.2	0.8	1.0	0.8
2019/2/8 12:00	1.0	1.2	0.8	1.1	0.9
2019/2/15 12:00	1.0	1.3	0.8	1.1	0.9
2019/2/22 12:00	1.0	1.3	0.8	1.1	0.9
2019/3/1 12:00	1.0	1.3	0.8	1.1	0.9
2019/3/8 12:00	1.0	1.3	0.8	1.1	0.9
2019/3/15 12:00	1.1	1.3	0.8	1.2	0.9
2019/3/22 12:00	1.1	1.3	0.8	1.1	0.9
2019/3/29 12:00	1.1	1.4	0.8	1.2	0.9
2019/4/5 12:00	1.1	1.4	0.8	1.2	0.9
2019/4/12 12:00	1.1	1.4	0.9	1.2	1.0
2019/4/19 12:00	1.1	1.4	0.9	1.2	1.0
2019/4/26 12:00	1.1	1.4	0.9	1.2	1.0
2019/5/3 12:00	1.1	1.4	0.9	1.2	1.0
2019/5/10 12:00	1.1	1.5	0.9	1.3	1.0
2019/5/17 12:00	1.1	1.5	0.9	1.3	1.0
2019/5/24 12:00	1.1	1.5	0.9	1.3	1.0
2019/5/31 12:00	1.2	1.5	0.9	1.3	1.0
2019/6/7 12:00	1.2	1.5	0.9	1.3	1.0
2019/6/14 12:00	1.2	1.6	0.9	1.4	1.0
2019/6/21 12:00	1.2	1.6	0.9	1.4	1.0
2019/6/28 12:00	1.2	1.6	0.9	1.4	1.0
2019/7/5 12:00	1.2	1.6	0.9	1.4	1.0
2019/7/12 12:00	1.2	1.6	0.9	1.4	1.1
2019/7/19 12:00	1.2	1.6	1.0	1.4	1.1
2019/7/26 12:00	1.2	1.6	1.0	1.4	1.1
2019/8/2 12:00	1.2	1.7	1.0	1.4	1.1
2019/8/9 12:00	1.2	1.7	1.0	1.4	1.1
2019/8/16 12:00	1.2	1.7	0.9	1.4	1.1
2019/8/23 12:00	1.3	1.7	1.0	1.5	1.1
2019/8/30 12:00	1.3	1.7	1.0	1.5	1.1
2019/9/6 12:00	1.3	1.7	1.0	1.5	1.2
2019/9/13 12:00	1.3	1.8	1.0	1.5	1.2
2019/9/20 12:00	1.3	1.8	1.0	1.5	1.2
2019/9/27 12:00	1.3	1.8	1.0	1.5	1.2
2019/10/4 12:00	1.3	1.8	1.0	1.5	1.2
2019/10/11 12:00	1.3	1.8	1.0	1.5	1.2
2019/10/18 12:00	1.3	1.8	1.0	1.5	1.2
2019/10/25 12:00	1.3	1.8	1.0	1.5	1.2
2019/11/1 12:00	1.3	1.8	1.0	1.5	1.2
2019/11/8 12:00	1.3	1.8	1.0	1.5	1.2
2019/11/15 12:00	1.3	1.8	1.0	1.5	1.2
2019/11/22 12:00	1.4	1.8	1.1	1.5	1.3
2019/11/29 12:00	1.4	1.8	1.0	1.5	1.2
2019/12/6 12:00	1.4	1.8	1.0	1.5	1.2
2019/12/13 12:00	1.4	1.8	1.0	1.5	1.2
2019/12/20 12:00	1.4	1.8	1.0	1.5	1.2
2019/12/27 12:00	1.4	1.8	1.0	1.5	1.2
2020/1/3 12:00	1.4	1.8	1.1	1.5	1.3
2020/1/10 12:00	1.4	1.8	1.1	1.5	1.2
2020/1/17 12:00	1.4	1.8	1.1	1.5	1.3
2020/1/24 12:00	1.4	1.9	1.1	1.5	1.3
2020/1/31 12:00	1.4	1.8	1.1	1.5	1.2
2020/2/7 12:00	1.5	1.9	1.1	1.6	1.3
2020/2/14 12:00	1.5	1.9	1.1	1.6	1.3
2020/2/21 12:00	1.5	1.9	1.1	1.6	1.3
2020/2/28 12:00	1.5	1.9	1.1	1.6	1.3
2020/3/6 12:00	1.5	1.9	1.1	1.6	1.3
2020/3/13 12:00	1.5	1.9	1.1	1.6	1.3
2020/3/20 12:00	1.5	1.9	1.1	1.6	1.3
2020/3/27 12:00	1.5	2.0	1.1	1.6	1.3
2020/4/3 12:00	1.5	2.0	1.2	1.7	1.3
2020/4/10 12:00	1.5	2.0	1.2	1.7	1.3
2020/4/17 12:00	1.5	2.0	1.2	1.7	1.4
2020/4/24 12:00	1.5	2.0	1.1	1.7	1.3
2020/5/1 12:00	1.5	2.0	1.1	1.7	1.4
2020/5/8 12:00	1.5	2.0	1.2	1.7	1.4
2020/5/15 12:00	1.5	2.0	1.2	1.7	1.4
2020/5/22 12:00	1.5	2.0	1.2	1.7	1.4
2020/5/29 12:00	1.5	2.1	1.2	1.7	1.4
2020/6/5 12:00	1.5	2.1	1.2	1.8	1.4
2020/6/12 12:00	1.6	2.1	1.2	1.8	1.4
2020/6/19 12:00	1.6	2.1	1.2	1.8	1.4
2020/6/26 12:00	1.6	2.1	1.2	1.8	1.4
2020/7/3 12:00	1.6	2.1	1.2	1.8	1.4
2020/7/10 12:00	1.6	2.1	1.2	1.8	1.4
2020/7/17 12:00	1.6	2.1	1.2	1.8	1.4
2020/7/24 12:00	1.6	2.1	1.2	1.8	1.4
2020/7/31 12:00	1.6	2.1	1.2	1.8	1.4
2020/8/7 12:00	1.6	2.1	1.2	1.8	1.4
2020/8/14 12:00	1.6	2.1	1.2	1.8	1.4
2020/8/18	-	-	-	-	-
2020/8/20	-	-	-	-	-
2020/8/21 12:00	1.6	2.2	1.2	1.8	1.4
2020/8/25 12:00	1.6	2.2	1.2	1.9	1.4
2021/2/11	2.1	2.7	-	-	1.6
2021/2/18	-	-	-	-	-
2021/2/19	-	-	-	-	-
2021/2/22	-	-	1.6	1.6	-
2021/2/25	-	-	-	-	-
2021/2/26	-	-	-	-	-

【地下水】

Table with columns for '事業区域名' (Project Area Name), '12月(道路部)' (December (Roads)), and '12月(道路部)' (December (Roads)). It contains a dense grid of numerical data representing groundwater levels across various project areas and months.

[表下欄] 事業区域名	7・12丁目(道路部)				12丁目(道路部)				12D-1(ホシノ)
	7丁目		12丁目		12丁目		12丁目		
	12E-1 次下量 (cm)	12E-2 次下量 (cm)	12E-4 次下量 (cm)	12E-5 次下量 (cm)	12E-6 次下量 (cm)	12E-7 次下量 (cm)	12E-8 次下量 (cm)	12E-9 次下量 (cm)	
計測日									
2017/1/25 12:00	0.0	0.0	0.0	0.0	0.0	0.0	0.0	0.0	0.0
2017/1/28 12:00	0.1	0.1	0.2	0.2	0.2	0.2	0.1	0.2	0.1
2018/1/5 12:00	0.2	0.2	0.2	0.2	0.3	0.3	0.1	0.2	0.3
2018/1/12 12:00	0.2	0.2	0.2	0.3	0.3	0.3	0.4	0.1	0.3
2018/1/19 12:00	0.2	0.2	0.3	0.3	0.3	0.3	0.4	0.1	0.3
2018/1/26 12:00	0.2	0.2	0.3	0.3	0.4	0.4	0.4	0.2	0.3
2018/2/2 12:00	0.3	0.3	0.3	0.4	0.4	0.5	0.5	0.2	0.3
2018/2/9 12:00	0.3	0.3	0.3	0.4	0.4	0.5	0.5	0.2	0.3
2018/2/16 12:00	0.3	0.3	0.3	0.4	0.4	0.5	0.5	0.2	0.3
2018/2/23 12:00	0.3	0.3	0.4	0.4	0.4	0.6	0.5	0.2	0.3
2018/3/2 12:00	0.3	0.3	0.4	0.4	0.5	0.6	0.5	0.2	0.3
2018/3/9 12:00	0.4	0.4	0.4	0.4	0.5	0.6	0.5	0.3	0.4
2018/3/16 12:00	0.4	0.4	0.7	0.4	0.5	0.6	0.5	0.3	0.4
2018/3/23 12:00	0.3	0.3	0.7	0.4	0.5	0.6	0.5	0.3	0.4
2018/3/30 12:00	0.3	0.4	0.7	0.4	0.5	0.6	0.5	0.3	0.4
2018/4/6 12:00	0.3	0.3	0.7	0.4	0.5	0.6	0.5	0.2	0.3
2018/4/13 12:00	0.4	0.4	0.7	0.4	0.5	0.6	0.5	0.3	0.4
2018/4/20 12:00	0.4	0.4	0.7	0.4	0.5	0.6	0.5	0.3	0.4
2018/4/27 12:00	0.4	0.4	0.7	0.5	0.5	0.6	0.5	0.3	0.4
2018/5/4 12:00	0.4	0.4	0.7	0.5	0.5	0.7	0.5	0.3	0.4
2018/5/11 12:00	0.4	0.4	0.8	0.5	0.5	0.7	0.5	0.3	0.4
2018/5/18 12:00	0.4	0.4	0.8	0.5	0.5	0.7	0.5	0.3	0.4
2018/5/25 12:00	0.4	0.4	0.8	0.5	0.5	0.7	0.5	0.3	0.4
2018/6/1 12:00	0.4	0.4	0.8	0.5	0.6	0.7	0.6	0.3	0.4
2018/6/8 12:00	0.5	0.4	0.8	0.6	0.6	0.8	0.6	0.3	0.4
2018/6/15 12:00	0.5	0.4	0.8	0.6	0.6	0.8	0.6	0.3	0.4
2018/6/22 12:00	0.5	0.5	0.8	0.6	0.6	0.8	0.6	0.3	0.4
2018/6/29 12:00	0.5	0.5	0.8	0.6	0.7	0.9	0.6	0.3	0.4
2018/7/6 12:00	0.5	0.5	0.8	0.7	0.7	0.9	0.7	0.3	0.4
2018/7/13 12:00	0.6	0.5	0.9	0.7	0.7	1.0	0.7	0.3	0.4
2018/7/20 12:00	0.6	0.5	0.9	0.8	0.8	1.0	0.7	0.4	0.5
2018/7/27 12:00	0.6	0.6	0.9	0.8	0.8	1.0	0.7	0.4	0.5
2018/8/3 12:00	0.7	0.6	0.9	0.8	0.9	1.1	0.8	0.4	0.5
2018/8/10 12:00	0.7	0.6	1.0	0.9	0.9	1.2	0.9	0.4	0.5
2018/8/17 12:00	0.7	0.7	1.0	0.9	1.0	1.2	0.8	0.4	0.5
2018/8/24 12:00	0.8	0.7	1.0	1.0	1.0	1.3	0.9	0.4	0.5
2018/8/31 12:00	0.8	0.8	1.1	1.0	1.1	1.4	0.9	0.4	0.5
2018/9/7 12:00	0.8	0.8	1.1	1.1	1.1	1.4	0.9	0.4	0.5
2018/9/14 12:00	0.8	0.8	1.1	1.1	1.1	1.5	1.0	0.4	0.5
2018/9/21 12:00	0.8	0.8	1.1	1.1	1.2	1.5	1.0	0.4	0.5
2018/9/28 12:00	0.8	0.8	1.1	1.1	1.2	1.5	1.0	0.4	0.5
2018/10/5 12:00	0.8	0.8	1.1	1.1	1.2	1.6	1.0	0.4	0.5
2018/10/12 12:00	0.8	0.8	1.1	1.1	1.2	1.6	1.0	0.4	0.5
2018/10/19 12:00	0.9	0.8	1.1	1.1	1.2	1.6	1.0	0.4	0.5
2018/10/26 12:00	0.8	0.8	1.1	1.2	1.2	1.6	1.0	0.5	0.7
2018/11/2 12:00	0.8	0.8	1.2	1.2	1.2	1.7	1.1	0.5	0.8
2018/11/9 12:00	0.9	0.8	1.2	1.2	1.3	1.7	1.1	0.5	0.8
2018/11/16 12:00	0.9	0.8	1.2	1.2	1.3	1.8	1.2	0.5	0.8
2018/11/23 12:00	0.9	0.8	1.2	1.3	1.3	1.8	1.2	0.5	0.8
2018/11/30 12:00	0.9	0.9	1.3	1.3	1.3	1.9	1.2	0.5	0.8
2018/12/7 12:00	0.9	0.9	1.3	1.3	1.4	1.9	1.2	0.6	0.9
2018/12/14 12:00	0.9	0.9	1.3	1.3	1.4	2.0	1.3	0.6	0.9
2018/12/21 12:00	0.9	0.9	1.3	1.3	1.4	2.0	1.3	0.6	0.9
2019/1/4 12:00	1.0	0.9	1.4	1.4	1.4	2.1	1.3	0.6	1.0
2019/1/11 12:00	1.0	1.0	1.4	1.4	1.5	2.1	1.3	0.6	1.0
2019/1/18 12:00	1.0	1.0	1.4	1.4	1.5	2.1	1.4	0.6	1.0
2019/1/25 12:00	1.0	1.0	1.4	1.5	1.5	2.1	1.4	0.6	1.0
2019/2/1 12:00	1.0	1.0	1.4	1.4	1.5	2.2	1.4	0.6	1.1
2019/2/8 12:00	1.1	1.0	1.4	1.5	1.6	2.2	1.5	0.7	1.1
2019/2/15 12:00	1.1	1.1	1.5	1.6	1.6	2.3	1.5	0.7	1.1
2019/2/22 12:00	1.1	1.1	1.5	1.6	1.6	2.3	1.5	0.7	1.1
2019/3/1 12:00	1.1	1.1	1.5	1.6	1.7	2.4	1.5	0.7	1.2
2019/3/8 12:00	1.1	1.1	1.5	1.6	1.7	2.4	1.5	0.7	1.1
2019/3/15 12:00	1.1	1.1	1.5	1.6	1.7	2.4	1.5	0.7	1.1
2019/3/22 12:00	1.1	1.1	1.5	1.6	1.7	2.4	1.5	0.7	1.1
2019/3/29 12:00	1.1	1.1	1.5	1.6	1.7	2.5	1.5	0.7	1.1
2019/4/5 12:00	1.2	1.1	1.5	1.6	1.7	2.5	1.5	0.7	1.1
2019/4/12 12:00	1.2	1.1	1.5	1.6	1.7	2.5	1.5	0.7	1.1
2019/4/19 12:00	1.2	1.1	1.5	1.6	1.7	2.5	1.5	0.7	1.1
2019/4/26 12:00	1.2	1.1	1.5	1.6	1.7	2.5	1.6	0.7	1.1
2019/5/3 12:00	1.2	1.2	1.5	1.6	1.7	2.6	1.6	0.7	1.1
2019/5/10 12:00	1.2	1.2	1.5	1.6	1.7	2.6	1.6	0.7	1.1
2019/5/17 12:00	1.2	1.2	1.6	1.7	1.7	2.6	1.6	0.7	1.1
2019/5/24 12:00	1.3	1.2	1.6	1.7	1.7	2.7	1.6	0.7	1.1
2019/5/31 12:00	1.3	1.2	1.6	1.7	1.7	2.7	1.6	0.7	1.1
2019/6/7 12:00	1.3	1.2	1.6	1.7	1.8	2.7	1.6	0.7	1.1
2019/6/14 12:00	1.3	1.2	1.6	1.8	1.8	2.7	1.6	0.7	1.1
2019/6/21 12:00	1.3	1.2	1.6	1.8	1.8	2.7	1.6	0.7	1.1
2019/6/28 12:00	1.3	1.2	1.6	1.8	1.8	2.8	1.6	0.7	1.1
2019/7/5 12:00	1.3	1.2	1.6	1.8	1.8	2.8	1.6	0.7	1.1
2019/7/12 12:00	1.3	1.2	1.6	1.8	1.8	2.8	1.6	0.7	1.1
2019/7/19 12:00	1.3	1.2	1.6	1.8	1.8	2.8	1.6	0.7	1.1
2019/7/26 12:00	1.3	1.2	1.6	1.8	1.8	2.8	1.6	0.7	1.1
2019/8/2 12:00	1.3	1.2	1.6	1.8	1.8	2.8	1.6	0.7	1.1
2019/8/9 12:00	1.3	1.2	1.6	1.8	1.8	2.8	1.6	0.7	1.1
2019/8/16 12:00	1.4	1.2	1.6	1.8	1.8	2.9	1.7	0.7	1.1
2019/8/23 12:00	1.4	1.2	1.6	1.8	1.9	2.9	1.7	0.7	1.1
2019/8/30 12:00	1.4	1.2	1.6	1.9	1.9	2.9	1.7	0.7	1.1
2019/9/6 12:00	1.4	1.3	1.7	1.9	1.9	3.0	1.7	0.7	1.2
2019/9/13 12:00	1.4	1.3	1.7	1.9	1.9	3.0	1.7	0.7	1.2
2019/9/20 12:00	1.4	1.3	1.7	1.9	1.9	3.0	1.7	0.8	1.2
2019/9/27 12:00	1.4	1.3	1.7	1.9	1.9	3.0	1.7	0.8	1.2
2019/10/4 12:00	1.4	1.3	1.7	1.9	1.9	3.0	1.7	0.8	1.2
2019/10/11 12:00	1.4	1.3	1.7	1.9	1.9	3.0	1.8	0.8	1.2
2019/10/18 12:00	1.4	1.3	1.7	1.9	1.9	3.0	1.7	0.8	1.2
2019/10/25 12:00	1.4	1.2	1.7	1.9	1.9	3.0	1.7	0.7	1.1
2019/11/1 12:00	1.4	1.2	1.7	1.9	1.9	3.0	1.7	0.7	1.1
2019/11/8 12:00	1.4	1.2	1.7	1.9	1.9	3.0	1.7	0.7	1.1
2019/11/15 12:00	1.4	1.2	1.7	1.9	1.9	3.0	1.7	0.7	1.1
2019/11/22 12:00	1.4	1.2	1.7	1.9	1.9	3.0	1.7	0.7	1.1
2019/11/29 12:00	1.4	1.2	1.7	2.0	1.9	3.1	1.8	0.7	1.2
2019/12/6 12:00	1.4	1.2	1.7	1.9	1.9	3.0	1.8	0.7	1.2
2019/12/13 12:00	1.4	1.3	1.7	2.0	1.9	3.1	1.8	0.7	1.2
2019/12/20 12:00	1.4	1.3	1.7	2.0	1.9	3.1	1.8	0.7	1.2
2019/12/27 12:00	1.4	1.2	1.7	1.9	2.0	3.1	1.8	0.7	1.2
2020/1/3 12:00	1.4	1.3	1.8	2.0	2.0	3.1	1.8	0.8	1.3
2020/1/10 12:00	1.4	1.3	1.8	2.0	2.0	3.1	1.8	0.7	1.2
2020/1/17 12:00	1.4	1.3	1.8	2.0	2.0	3.1	1.8	0.8	1.3
2020/1/24 12:00	1.4	1.3	1.8	2.0	2.0	3.2	1.9	0.8	1.3
2020/1/31 12:00	1.4	1.3	1.8	2.0	2.0	3.2	1.8	0.8	1.3
2020/2/7 12:00	1.4	1.3	1.8	2.0	2.0	3.2	1.9	0.8	1.3
2020/2/14 12:00	1.4	1.3	1.8	2.0	2.0	3.2	1.9	0.8	1.3
2020/2/21 12:00	1.5	1.4	1.9	2.1	2.0	3.2	1.9	0.8	1.4
2020/2/28 12:00	1.5	1.3	1.8	2.1	2.0	3.2	1.9	0.8	1.4
2020/3/6 12:00	1.5	1.3	1.8	2.1	2.0	3.3	1.9	0.8	1.4
2020/3/13 12:00	1.5	1.4	1.9	2.1	2.1	3.3	1.9	0.8	1.4
2020/3/20 12:00	1.5	1.3	1.8	2.1	2.1	3.3	1.9	0.8	1.4
2020/3/27 12:00	1.5	1.4	1.9	2.1	2.1	3.3	1.9	0.8	1.4
2020/4/3 12:00	1.5	1.4	1.9	2.1	2.1	3.3	1.9	0.8	1.4
2020/4/10 12:00	1.5	1.4	1.9	2.1	2.1	3.3	1.9	0.8	1.3
2020/4/17 12:00	1.5	1.4	1.9	2.1	2.1	3.3	1.9	0.8	1.3
2020/4/24 12:00	1.5	1.3	1.8	2.1	2.1	3.3	1.9	0.8	1.3
2020/5/1 12:00	1.5	1.3	1.8	2.1	2.1	3.3	1.9	0.8	1.3
2020/5/8 12:00	1.5	1.4	1.9	2.1					

【地下水】

事業区域名 計測地点高さ (T.P.m)	対象観測所																	
	4号		5W		8W2		9号		11号		11B2		12W6		12W8			
	9.16	9.26	9.14	8.73	9.28	8.65	8.38	8.71	8.43	9.16	9.26	8.71	8.43	9.16	9.26			
計測日	地下水位 (T.P.m)	地下水位 (T.P.m)	地下水位 (T.P.m)	地下水位 (T.P.m)	地下水位 (T.P.m)	地下水位 (T.P.m)	地下水位 (T.P.m)	地下水位 (T.P.m)	地下水位 (T.P.m)	地下水位 (T.P.m)	地下水位 (T.P.m)	地下水位 (T.P.m)	地下水位 (T.P.m)	地下水位 (T.P.m)	地下水位 (T.P.m)	地下水位 (T.P.m)		
2017/11/25 12.00	8.22	-0.36	8.67	-0.59	8.61	-0.52	1.67	-1.01	7.29	-1.92	6.99	-1.62	6.13	-2.30	7.61	-1.05	7.12	-1.10
2017/12/25 12.00	7.91	-1.25	8.51	-0.70	8.37	-0.76	1.23	-1.50	7.08	-2.18	6.73	-1.91	6.08	-2.30	7.32	-1.94	6.68	-1.54
2018/1/25 12.00	7.73	-1.17	8.41	-0.72	8.31	-0.78	1.08	-1.65	6.93	-2.09	6.60	-2.05	5.97	-2.38	7.24	-1.63	6.71	-1.33
2018/2/25 12.00	7.73	-1.42	8.35	-0.90	8.28	-0.83	0.99	-1.73	6.95	-2.34	6.54	-2.15	6.07	-2.32	7.21	-1.49	6.75	-1.67
2018/3/25 12.00	7.70	-1.46	8.39	-0.70	8.25	-0.83	0.96	-1.76	6.94	-2.39	6.52	-2.14	6.07	-2.30	7.18	-1.52	6.75	-1.67
2018/4/25 12.00	7.52	-1.39	8.56	-0.68	8.24	-0.94	1.23	-1.90	7.05	-2.16	6.75	-1.90	6.08	-2.29	7.23	-1.47	6.83	-1.60
2018/5/25 12.00	7.66	-1.22	8.56	-0.76	8.30	-0.86	1.29	-1.76	7.09	-2.22	6.68	-2.01	6.29	-2.31	7.29	-1.59	6.91	-1.51
2018/6/25 12.00	7.78	-1.34	8.61	-0.69	8.37	-0.76	1.28	-1.44	7.06	-2.22	6.85	-1.80	6.09	-2.29	7.28	-1.42	6.78	-1.49
2018/7/25 12.00	7.74	-1.42	8.53	-0.72	8.33	-0.81	1.19	-1.53	7.00	-2.27	6.81	-1.84	6.08	-2.29	7.26	-1.44	6.75	-1.61
2018/8/25 12.00	7.69	-1.11	8.41	-0.94	8.28	-0.83	1.08	-1.66	6.94	-2.41	6.62	-2.05	6.09	-2.39	7.22	-1.42	6.73	-1.35
2018/9/25 12.00	7.82	-1.30	8.75	-0.75	8.46	-0.76	1.35	-1.33	7.09	-2.10	7.07	-1.52	6.12	-2.20	7.45	-1.29	6.83	-1.58
2018/10/25 12.00	8.22	-0.44	8.94	-0.31	9.09	-0.47	8.28	-0.44	7.25	-2.04	7.59	-1.07	6.39	-1.95	8.02	-0.92	7.64	-0.79
2018/11/25 12.00	8.24	-0.91	8.68	-0.51	8.84	-0.30	7.91	-0.82	7.36	-1.91	7.29	-1.36	6.22	-1.58	7.77	-0.94	7.17	-1.24
2018/12/25 12.00	8.40	-0.77	8.76	-0.66	8.99	-0.54	8.24	-0.61	7.45	-1.69	7.41	-1.24	6.33	-2.04	8.09	-0.81	7.36	-1.02
2019/1/30 12.00	8.26	-0.89	8.62	-0.63	8.70	-0.47	7.88	-0.82	7.34	-1.94	7.33	-1.45	6.23	-1.52	7.74	-0.99	7.17	-1.29
2019/2/25 12.00	8.18	-0.77	8.50	-0.72	8.52	-0.62	7.72	-1.00	7.28	-2.04	7.13	-1.51	6.23	-1.50	7.67	-1.03	7.11	-1.19
2019/3/25 12.00	8.08	-1.05	8.35	-0.96	8.30	-0.84	7.59	-1.19	7.16	-2.10	7.02	-1.63	6.13	-2.20	7.58	-1.14	7.03	-1.40
2019/4/25 12.00	8.06	-1.05	8.44	-0.81	8.30	-0.85	7.55	-1.19	7.23	-2.04	7.04	-1.64	6.29	-2.12	7.52	-1.13	7.02	-1.40
2019/5/25 12.00	8.27	-0.83	8.72	-0.56	8.41	-0.74	7.83	-0.90	7.58	-1.90	7.55	-1.30	6.30	-2.03	7.72	-0.98	7.14	-1.23
2019/6/25 12.00	8.26	-0.94	8.61	-0.61	8.28	-0.85	7.72	-1.01	7.35	-1.89	7.22	-1.44	6.31	-2.06	7.62	-1.03	7.10	-1.34
2019/7/25 12.00	8.40	-0.75	8.76	-0.62	8.40	-0.44	7.96	-0.72	7.68	-1.34	7.48	-1.11	6.43	-1.94	7.61	-0.88	7.23	-1.18
2019/8/15 12.00	8.40	-0.76	8.61	-0.60	8.41	-0.73	7.88	-0.85	7.45	-1.80	7.23	-1.42	6.35	-2.02	7.76	-0.90	7.19	-1.23
2019/9/25 12.00	8.33	-0.82	8.49	-0.76	8.30	-0.84	7.78	-0.94	7.42	-1.86	7.18	-1.46	6.33	-2.00	7.67	-1.04	7.13	-1.30
2019/10/25 12.00	8.34	-0.84	8.62	-0.68	8.22	-0.91	7.76	-0.99	7.41	-1.87	7.27	-1.35	6.41	-2.14	7.64	-0.95	7.12	-1.31
2019/11/25 12.00	8.26	-0.93	8.50	-0.70	8.16	-0.71	7.64	-0.91	7.36	-1.93	7.18	-1.41	6.28	-2.12	7.59	-1.14	7.01	-1.32
2019/12/25 12.00	8.31	-0.81	8.64	-0.62	8.14	-0.97	7.75	-0.97	7.36	-1.91	7.23	-1.41	6.28	-2.00	7.55	-1.14	7.11	-1.32
2019/1/25 12.00	8.35	-0.86	8.73	-0.58	8.29	-0.84	7.92	-0.88	7.41	-1.87	7.29	-1.39	6.41	-1.97	7.71	-1.04	7.15	-1.27
2019/2/25 12.00	8.29	-0.71	8.51	-0.76	8.23	-0.81	7.74	-0.87	7.37	-1.87	7.17	-1.47	6.22	-2.14	7.59	-1.12	7.06	-1.33
2019/3/25 12.00	8.25	-0.91	8.43	-0.80	8.18	-0.99	7.67	-0.92	7.33	-1.94	7.13	-1.52	6.27	-2.09	7.51	-1.19	7.09	-1.33
2019/4/25 12.00	8.22	-0.93	8.41	-0.89	8.12	-1.07	7.67	-1.04	7.35	-1.92	7.19	-1.46	6.23	-2.16	7.44	-1.26	7.03	-1.40
2019/5/25 12.00	8.14	-1.02	8.18	-1.01	8.05	-1.06	7.46	-1.26	7.32	-1.95	7.10	-1.56	6.24	-2.14	7.37	-1.33	6.95	-1.47
2019/6/25 12.00	8.06	-1.03	8.03	-1.00	7.90	-1.04	7.31	-1.19	7.06	-2.02	6.98	-1.89	6.04	-2.23	7.29	-1.33	6.92	-1.53
2019/7/25 12.00	8.19	-0.97	8.34	-0.93	7.96	-1.16	7.55	-1.17	7.37	-1.91	7.22	-1.42	6.22	-2.13	7.38	-1.33	7.01	-1.42
2019/8/25 12.00	8.18	-0.78	8.42	-0.84	7.94	-1.20	7.58	-1.17	7.36	-1.95	7.24	-1.41	6.22	-2.15	7.35	-1.35	7.01	-1.42
2019/9/25 12.00	8.05	-1.02	8.33	-1.00	7.80	-1.24	7.55	-1.14	7.35	-2.02	7.19	-1.59	6.22	-2.14	7.39	-1.32	6.93	-1.53
2019/10/25 12.00	8.00	-1.14	8.04	-1.21	7.80	-1.27	7.33	-1.45	7.15	-2.17	7.01	-1.64	6.17	-2.11	7.16	-1.54	6.83	-1.60
2019/11/25 12.00	7.93	-1.23	8.00	-1.26	7.83	-1.31	7.22	-1.50	7.12	-2.12	6.98	-1.67	6.18	-2.19	7.11	-1.60	6.79	-1.64
2019/12/25 12.00	8.20	-0.88	8.62	-0.64	7.94	-1.19	7.66	-1.09	7.40	-1.83	7.27	-1.37	6.17	-2.10	7.38	-1.39	7.00	-1.42
2020/1/25 12.00	8.02	-1.04	8.44	-0.83	7.96	-1.19	7.41	-1.19	7.30	-1.92	7.29	-1.37	6.17	-2.19	7.11	-1.69	6.96	-1.49
2020/2/25 12.00	8.38	-0.78	8.93	-0.33	8.13	-1.01	8.25	-0.74	7.43	-1.84	7.47	-1.18	6.30	-2.04	8.88	-0.82	7.41	-1.02
2020/3/25 12.00	8.53	-0.62	8.76	-0.49	8.79	-0.51	8.27	-0.48	7.56	-1.72	7.37	-1.27	6.50	-1.82	7.89	-0.62	7.41	-1.02
2020/4/25 12.00	8.49	-0.71	8.68	-0.55	8.78	-0.35	8.01	-0.72	7.49	-1.73	7.23	-1.42	6.15	-2.26	7.77	-0.94	7.21	-1.04
2020/5/25 12.00	8.33	-0.84	8.59	-0.69	8.62	-0.52	7.82	-0.91	7.38	-1.90	7.33	-1.51	6.07	-2.32	7.64	-1.07	7.12	-1.31
2020/6/25 12.00	8.22	-0.93	8.59	-0.72	8.55	-0.59	7.71	-1.02	7.30	-1.97	7.09	-1.56	6.06	-2.32	7.55	-1.17	7.05	-1.31
2020/7/25 12.00	8.12	-1.03	8.54	-0.78	8.45	-0.82	7.55	-1.16	7.24	-2.04	7.01	-1.62	6.05	-2.36	7.45	-1.23	6.96	-1.45
2020/8/25 12.00	8.07	-1.09	8.64	-0.60	8.48	-0.60	7.55	-1.17	7.25	-2.02	6.71	-1.53	6.08	-2.30	7.45	-1.27	6.92	-1.50
2020/9/25 12.00	7.97	-1.19	8.55	-0.71	8.38	-0.78	7.39	-1.33	7.17	-2.10	6.99	-1.65	6.05	-2.37	7.35	-1.35	6.85	-1.50
2020/10/25 12.00	7.91	-1.23	8.50	-0.75	8.33	-0.81	7.29	-1.36	7.13	-2.12	6.92	-1.73	6.04	-2.40	7.30	-1.42	6.81	-1.54
2020/11/25 12.00	7.83	-1.32	8.45	-0.83	8.23	-0.87	7.19	-1.57	7.07	-2.13	6.81	-1.71	6.04	-2.36	7.24	-1.46	6.76	-1.60
2020/12/25 12.00	7.81	-1.32	8.51	-0.75	8.25	-0.82	7.12	-1.61	7.05	-2.22	6.87	-1.71	6.08	-2.36	7.21	-1.50	6.75	-1.63
2021/1/25 12.00	7.88	-1.28	8.70	-0.53	8.33	-0.81	7.37	-1.39	7.16	-2.17	6.98	-1.67	6.05	-2.38	7.29	-1.48	6.81	-1.61
2021/2/25 12.00	7.82	-1.21	8.68	-0.65	8.27	-0.82	7.19	-1.54	7.09	-2.05	6.91	-1.73	6.08	-2.32	7.21	-1.53	6.76	-1.63
2021/3/25 12.00	7.73	-1.25	8.52	-0.78	8.22	-0.91	7.03	-1.69	7.04	-2.28	6.88	-1.70	6.01	-2.35	7.18	-1.54	6.72	-1.76
2021/4/25 12.00	7.66	-1.50	8.43	-0.87	8.19	-0.94	6.89	-1.83	6.94	-2.36	6.80	-1.85	6.01	-2.37	7.13	-1.57	6.69	-1.70
2021/5/25 12.00	7.61	-1.59	8.33	-0.97	8.16	-0.97	6.83	-1.86	6.93	-2.47	6.73	-1.91	6.02	-2.39	7.11	-1.60	6.67	-1.71
2021/6/25 12.00	7.56	-1.67	8.25	-0.94	8.13	-1.00	6.78	-1.93	6.80	-2.37	6.58	-2.08	6.03	-2.41	7.08	-1.62	6.55	-1.85
2021/7/25 12.00	7.51	-1.64	8.31	-0.93	8.11	-1.03	6.71											